

GENERAL NOTES:

1. Contractor will be required to provide notice to utility companies a minimum of seventy-two (72) hours prior to any excavation, as follows:

Kansas One-Call 687-2470

The Contractor must notify the following in case of an emergency:

AT&T 1-800-246-8464
 Black Hills Energy 1-800-694-8989
 City of Wichita Water & Sewer 1-316-219-8921
 City of Wichita Stormwater 1-316-268-4090
 City of Wichita Traffic 1-316-268-4034
 Cox Communications 1-888-249-3530
 Kansas Gas Service 1-888-482-4950
 Evergy 1-800-544-4857

2. Utility service lines, poles, etc. are to be adjusted as necessary by others prior to construction unless the plans specifically call for their adjustment by the Contractor or unless the plans specifically identify a utility to be adjusted by its owner during construction. Existing utilities and their location, as shown on the plans, represent the best information obtainable for design. The Contractor will be required to work around existing utilities within the right-of-way which do not conflict with proposed construction.

3. Rubble from the removal of miscellaneous structures and excess excavation which is to be wasted shall be disposed of on sites to be provided by the Contractor. These sites shall be approved by the Engineer as to suitability, appearance and site location. Locations, in the opinion of the Engineer, that will leave an unsightly appearance will not be approved. All disposal sites must be approved by the Kansas Department of Health and Environment. Material either stockpiled or disposed of in a flood plain will require a Kansas State Board of Agriculture permit. Any material dumped in waters of the United States or wetlands is subject to U.S. Corps. of Engineers permitting regulations. Any material buried or stockpiled beyond approved construction limits will require additional archaeological investigations unless buried in a previously approved borrow location.

4. Trees and shrubs in public right-of-way which are in direct conflict with proposed new construction shall be removed by the Contractor with the City Engineer's approval. Trees and shrubs which are not in direct conflict with proposed new construction shall be saved and protected from damage.

5. The Contractor shall give all property owners and/or tenants of developed property abutting the construction of this project a minimum of ten (10) days notice prior to start of construction.

6. The Contractor shall be responsible for preserving property irons. The Contractor will be required to re-establish any property irons which are damaged or destroyed by his construction operations. Such irons shall be re-established by a licensed land surveyor in accordance with state laws.

7. All elevations shown are NGVD29.

8. A saw cut of at least one-half the depth of existing surface courses or one-fourth the depth of the existing total pavement thickness shall be provided at locations where proposed construction abuts the existing surface course or pavement for which partial removal of that surface or pavement is required. Sawed joint to facilitate removal within three (3) feet of existing joints will not be permitted and for such instances the limits of removal shall extend to the existing joint. Such saw cuts will not be paid for directly and this cost shall be considered as subsidiary to the removal of the surface or pavement.

9. All existing and proposed erosion control measures including silt fencing, erosion control mat, straw bales, inlet barriers, and const. entrance shall be maintained throughout construction by the contractor and until project is accepted by the City of Wichita. The on-site engineer shall complete weekly reports on the status of erosion control measures. The contractor shall be required to comply with maintenance and/or replacement of erosion control measures as determined by the on-site engineer until project is accepted by City of Wichita. Maintenance and/or replacement of erosion control measures to be paid by L.S. bid item "Maintain Existing BMPs".

10. All disturbed areas are to be seeded as follows:

Seed -- Rye grass; 5 lbs./1000 Sq. Ft.

All costs associated with seeding including mobilization, preparation of ground, seeding, fertilizing, mulching, etc. shall be included in the L.S. bid item "Seeding".

11. The developer for this project is Jay W. Russell, (316)722-2417 and Ritchie Development, Kevin Mullen, (316)684-7300.

12. Sidewalk construction and project seeding shall be completed after the installation of Evergy trenching and conduit installation.

13. Contractor to clear all trees on Lots 97-114, Block A, which shall be burned or removed from the site. All trees on Lots 46-54, Block C shall remain. To be incidental to "Site Clearing".

14. All excess excavation shall remain on-site and shall be stockpiled or spread at a location determined by the developer or engineer.

Benchmarks

BM #1: Crows foot cut at SE corner of curb inlet south side of Kollmeyer near NE corner of Lot 82, Block A, Edge Water Addition.
 Elev. = 1335.36 NGVD29

BM #2: Brass disc on top of curb by fire hydrant at SE corner of intersection of Kollmeyer and Kollmeyer Ct. (Lots 63-82, Block A) at the NW corner of Lot 82, Block A, Edge Water Addition.
 Elev. = 1336.61 NGVD29

STREET PAVING FOR KOLLMMEYER

to serve

EDGE WATER ADD. - PH. 4

Kollmeyer from the east line of Lot 45, Block C, east to the east line of Lot 54, Block C
 Kollmeyer Ct. (Lots 97 through 107, Block A) from the south line of Kollmeyer, south to and including the cul-de-sac
 Kollmeyer Ct. (Lots 108 through 114, Block A) from the south line of Kollmeyer, south to and including the cul-de-sac

CITY OF WICHITA, KANSAS

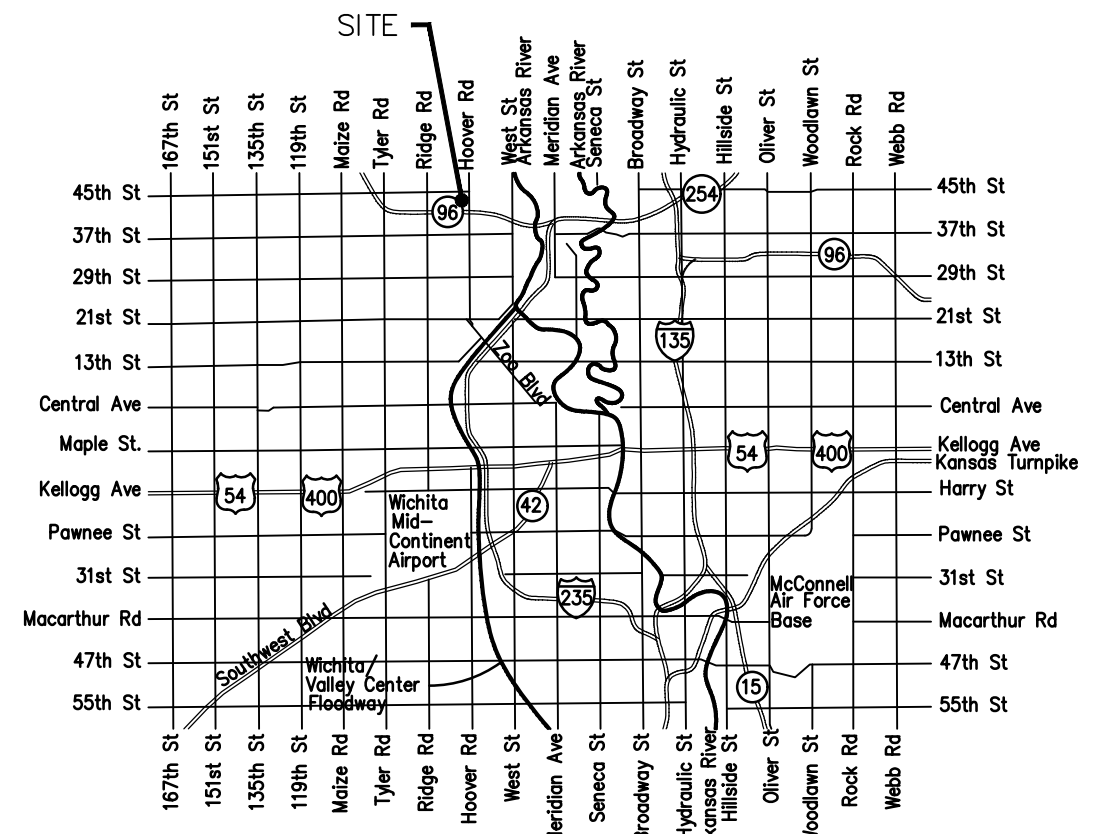
Gary Janzen, P.E. City Engineer

Project Number

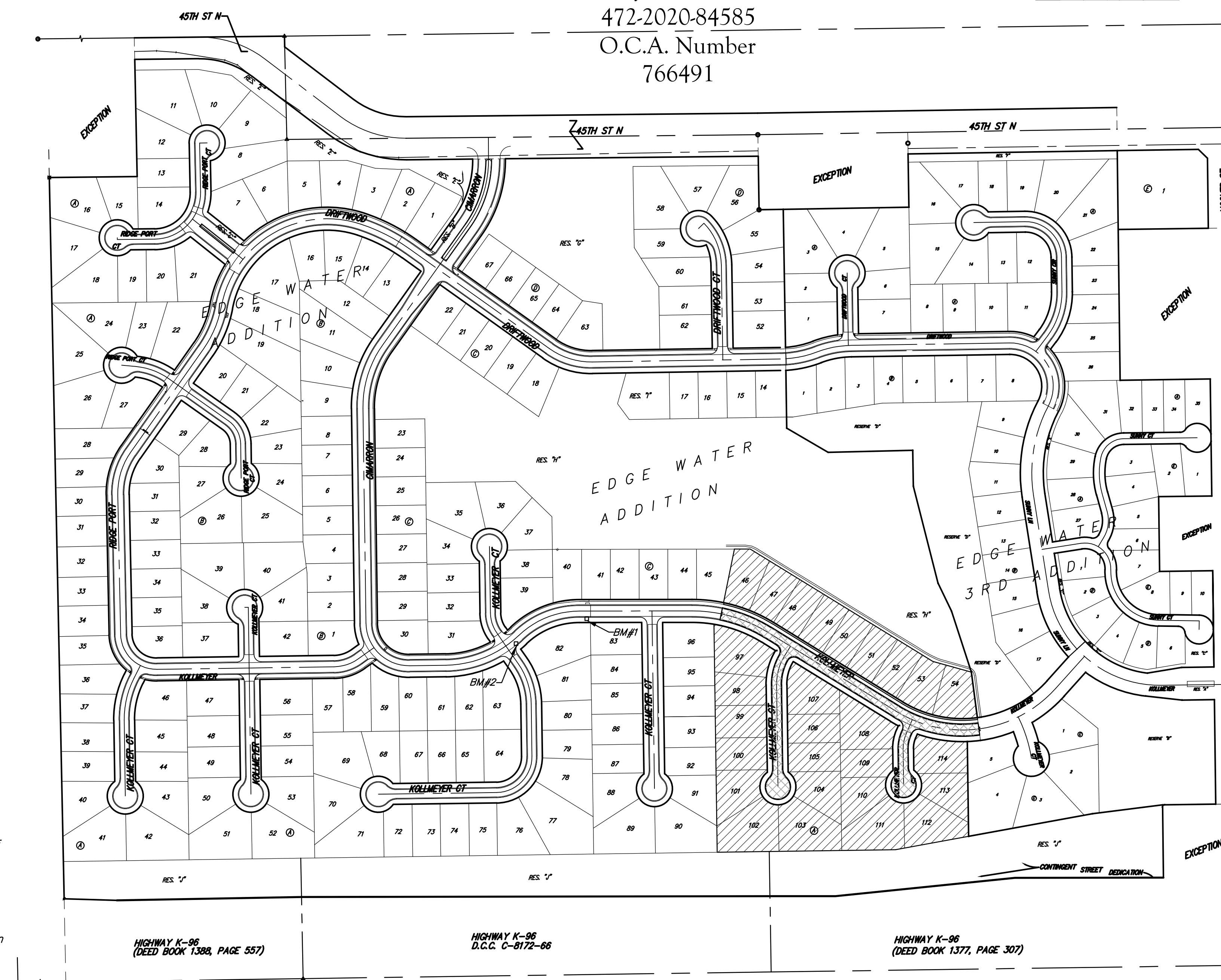
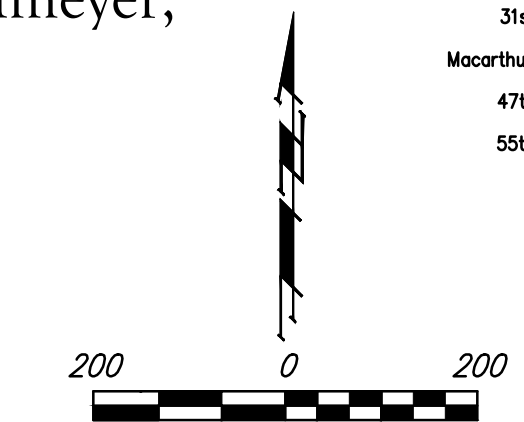
472-2020-84585

O.C.A. Number

766491



Vicinity Map



Sheet Index

Title Sheet	1
Kollmeyer	2-3
Kollmeyer Ct. (Lots 97-107, Block A)	4
Kollmeyer Ct. (Lots 108-114, Block A)	5
Esmt. Grading & Erosion Control Plan	6
Asphalt Paving Detail	7
Curb & Gutter Detail	8
Sign Detail	9
Valley Gutter Detail	10
Erosion Control BMP Details	11-15
Street X-Sections	16-21
Coordinate Sheet	22
Copy of Plat	23



Project Earthwork Totals
 Excavation = 1,724 C.Y.
 Loose Fill = 551 C.Y.
 Compacted Fill = 65 C.Y.
Total Project Length
 1,387 L.F. = 0.26 Miles

Benefit District
 Proposed Streets



Baughman Company, P.A. 315 Ellis St. Wichita, KS 67211 P 316-262-7271 F 316-262-0143
 ENGINEERING | SURVEYING | PLANNING | LANDSCAPE ARCHITECTURE