

BENCHMARKS:
 BM #1: Crows foot cut at SE corner of curb inlet south side of Kollmeyer near NE corner of Lot 82, Block A, Edge Water Addition.
 Elev. = 1335.36 NGVD29

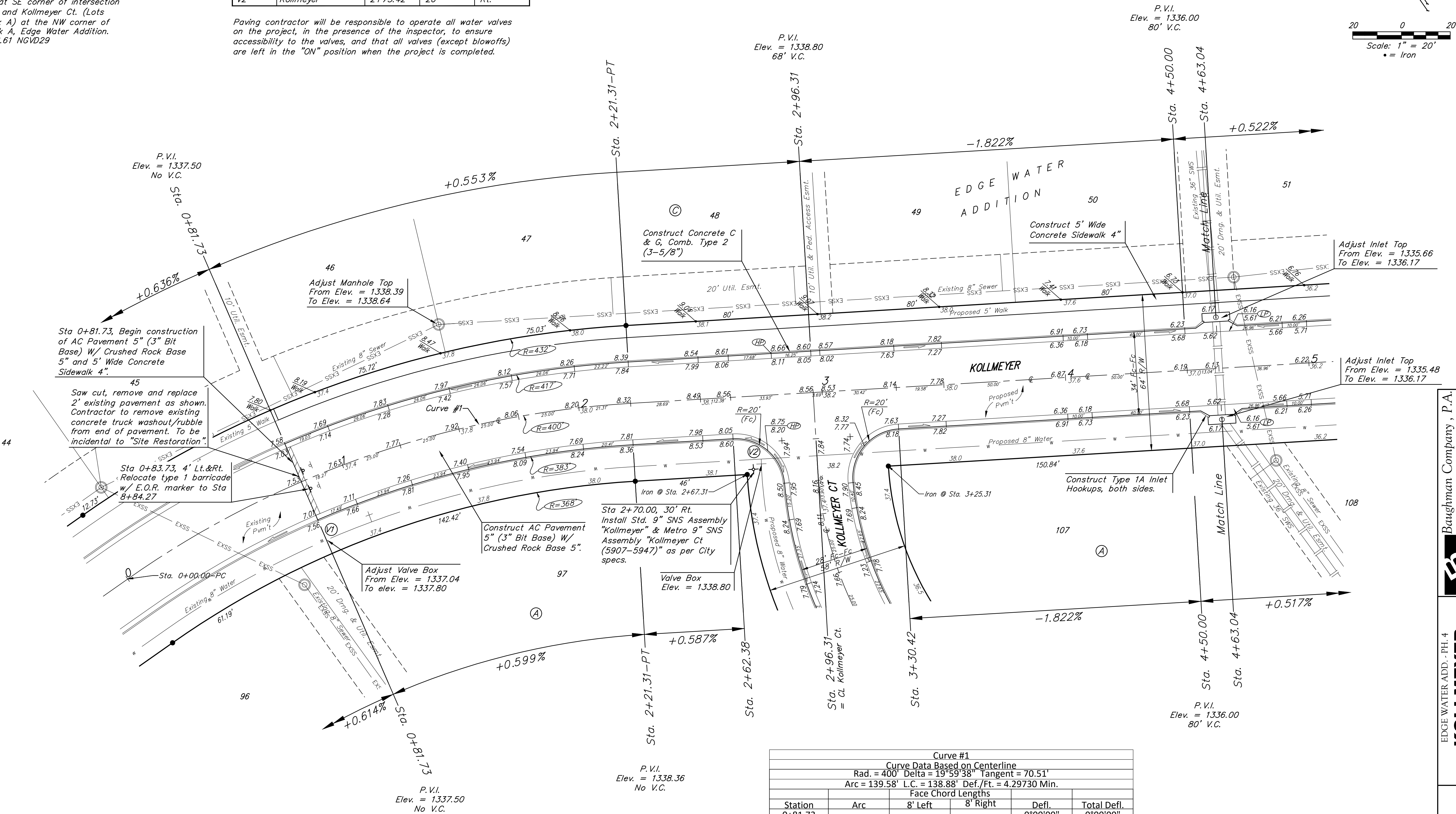
BM #2: Brass disc on top of curb by fire hydrant at SE corner of intersection of Kollmeyer and Kollmeyer Ct. (Lots 63-82, Block A) at the NW corner of Lot 82, Block A, Edge Water Addition.
 Elev. = 1336.61 NGVD29

WATER VALVE LOCATION TABLE

VALVE NUMBER	STREET	BASELINE STATION	OFFSET DISTANCE	OFFSET DIRECTION
V1	Kollmeyer	0+81.73	26'	Rt.
V2	Kollmeyer	2+73.42	26'	Rt.

Paving contractor will be responsible to operate all water valves on the project, in the presence of the inspector, to ensure accessibility to the valves, and that all valves (except blowoffs) are left in the "ON" position when the project is completed.

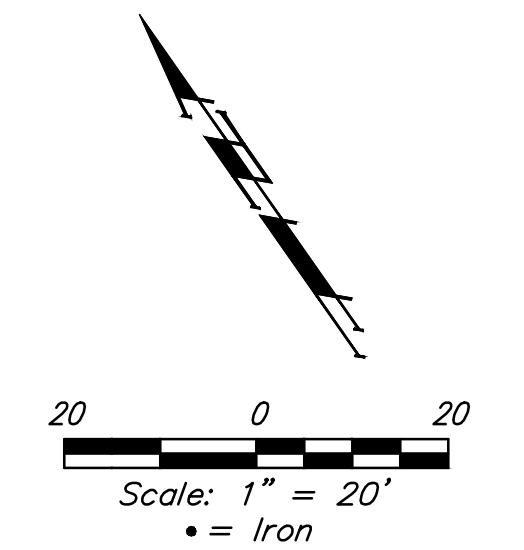
Baseline = CL Kollmeyer



P.V.I.
 Elev. = 1338.80
 68' V.C.

P.V.I.
 Elev. = 1336.00
 80' V.C.

P.V.I.
 Elev. = 1337.50
 No V.C.



Curve #1
 Curve Data Based on Centerline
 Rad. = 400' Delta = 19°59'38" Tangent = 70.51'
 Arc = 139.58' L.C. = 138.88' Def./Ft. = 4.29730 Min.

Station	Face Chord Lengths				Total Defl.
	Arc	8' Left	8' Right	Defl.	
0+81.73				0°00'00"	0°00'00"
1+00.00	18.27'	19.41'	17.13'	1°18'31"	1°18'31"
1+25.00	25.00'	26.56'	23.43'	1°47'26"	3°05'57"
1+50.00	25.00'	26.56'	23.43'	1°47'26"	4°53'23"
1+75.00	25.00'	26.56'	23.43'	1°47'26"	6°40'49"
2+00.00	25.00'	26.56'	23.43'	1°47'25"	8°28'14"
2+21.31	21.31'	22.64'	19.98'	1°31'35"	9°59'49"

NOTE: ROLL TYPE CURB & GUTTER (TYPE 2) TO BE CONSTRUCTED ON THE PAVEMENT SHOWN ON THIS SHEET. TOP OF CURB ELEVATIONS ARE GIVEN FOR FULL HEIGHT CURB (TYPE 4).

EDGE WATER ADD. - PH. 4
KOLLMAYER
 STREET IMPROVEMENTS

Baughman Company, P.A.
 ENGINEERING, PLANNING, LANDSCAPE ARCHITECTURE
 1515 W. WALTON ST. CHICAGO, IL 60607
 (773) 327-1100 FAX (773) 327-1101
 www.baughman.com

DATE: 08/20/20
 DRAWN BY: JMS
 CHECKED BY: JMS
 APPROVED BY: JMS

SHEET
 OF
2
23