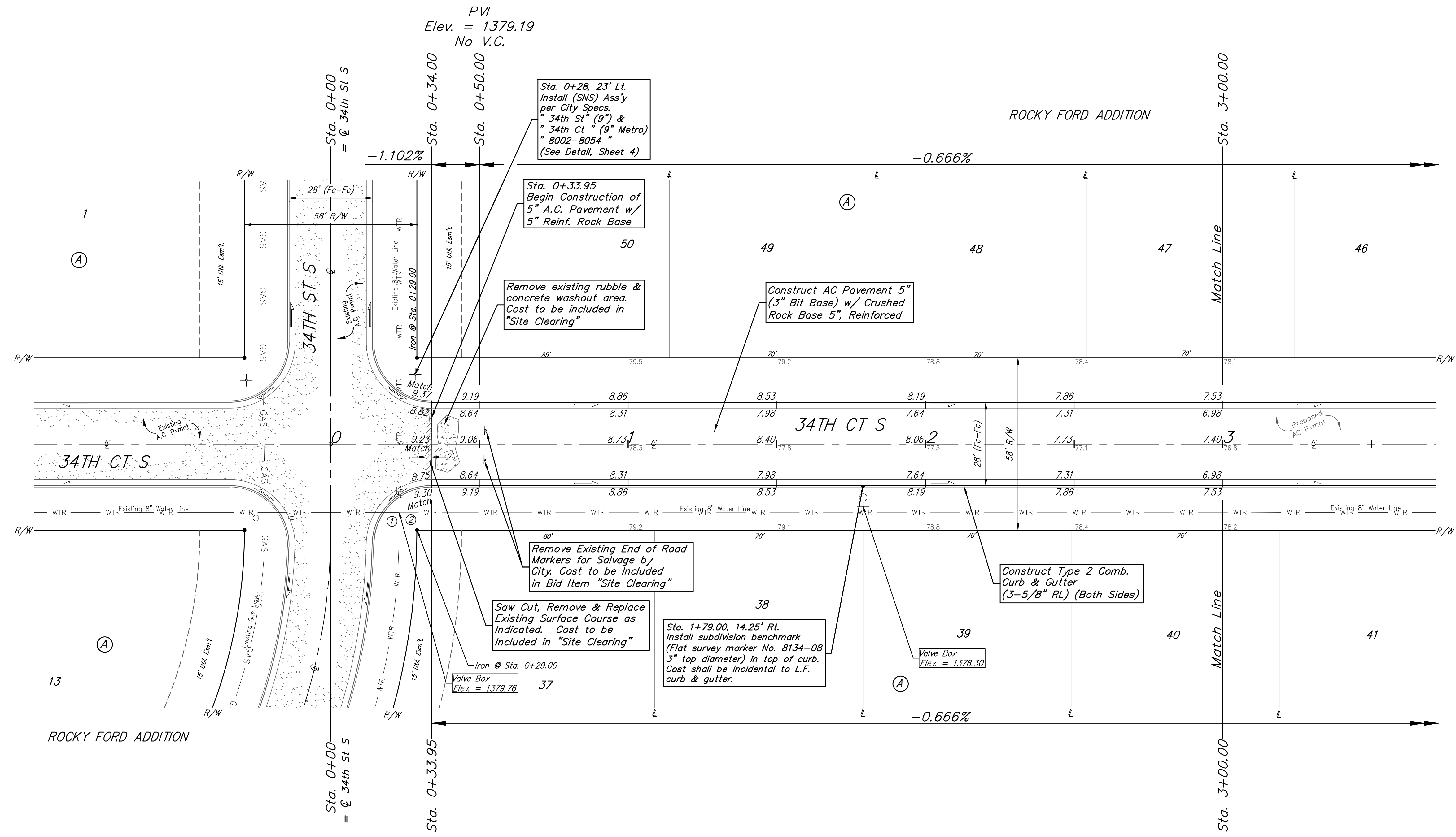
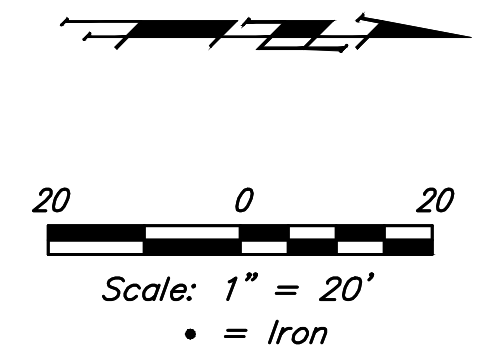


BENCHMARKS:
BM #1: "□" on Fence Footing under warning US Air Force Installation Sign West of Rock Road, 400' N. of W 1/2 Cor. Elev. = 1377.45 NAVD88

BM #2: Cross cut in top of curb West end of southwest curb return, 34th & 34th Ct. (Lots 1-13, Block A) Elev. = 1379.36 NAVD88

BM #3: Cross cut in top of curb North end of north curb return, 34th & 34th Ct. (Lots 22-36, Block A) Elev. = 1377.16 NAVD88



PV
 Elev. = 1379.19
 No V.C.

Sta. 0+28, 23' Lt.
 Install (SNS) Ass'y per City Specs.
 "34th St" (9") &
 "34th Ct" (9" Metro)
 "8002-8054"
 (See Detail, Sheet 4)

Sta. 0+33.95
 Begin Construction of
 5" A.C. Pavement w/
 5" Reinf. Rock Base

Remove existing rubble &
 concrete washout area.
 Cost to be included in
 "Site Clearing"

Construct AC Pavement 5"
 (3" Bit Base) w/ Crushed
 Rock Base 5", Reinforced

Remove Existing End of Road
 Markers for Salvage by
 City. Cost to be Included
 in Bid Item "Site Clearing"

Saw Cut, Remove & Replace
 Existing Surface Course as
 Indicated. Cost to be
 Included in "Site Clearing"

Sta. 1+79.00, 14.25' Rt.
 Install subdivision benchmark
 (Flat survey marker No. 8134-08
 3" top diameter) in top of curb.
 Cost shall be incidental to L.F.
 curb & gutter.

Iron @ Sta. 0+29.00
 Valve Box
 Elev. = 1378.30

Subdivision Benchmarks

Street & Station	Location Description	Elevation
34th Ct 1+79.00, 14.25' Rt.	Adjacent to Fire Hydrant West of the NW Cor., Lot 38, Blk A	

Valve Location Table

VALVE NUMBER	STREET	BASELINE STATION	OFFSET DISTANCE	OFFSET DIRECTION
1	34th Ct	0+21.00	23'	Rt.
1	34th Ct	0+25.00	25'	Rt.

Roll type curb & gutter to be constructed on the pavement on this sheet.
 Top of curb elevation are given for full height curb.

	Rocky Ford Addition - Phase 2B
	34TH CT S
Sta. 0+00 to Sta. 3+00.00	
Baughman Company, P.A. 315 Ellis St. Wichita, KS 67211 P 316-262-7271 F 316-262-0149	
ENGINEERING SURVEYING PLANNING LANDSCAPE ARCHITECTURE	
PROJECT NUMBER 472-2019-085559	DESIGN AEG
REVISIONS:	DRAWN JAK
	APPROVED DATE 3/26/2020
	SCALE Noted
	SHEET
5 OF 16	