

# GENERAL NOTES:

1. THE CONTRACTOR SHALL COMPLY WITH ALL APPLICABLE SAFETY REGULATIONS. ALL CONSTRUCTION SHALL BE COMPLETED FOLLOWING CURRENT CITY STANDARD SPECIFICATIONS AND SPECIAL PROVISIONS.
2. CONTRACTOR WILL BE REQUIRED TO PROVIDE NOTICE TO UTILITY COMPANIES A MINIMUM OF SEVENTY-TWO (72) HOURS PRIOR TO ANY EXCAVATION, AS FOLLOWS:

KANSAS ONE-CALL 687-2470

THE CONTRACTOR MUST NOTIFY THE FOLLOWING IN CASE OF AN EMERGENCY:

AT&T	1-800-246-8464
BLACK HILLS ENERGY	1-800-694-8989
CITY OF WICHITA WATER & SEWER	1-316-219-8921
CITY OF WICHITA STORMWATER	1-316-268-4090
CITY OF WICHITA TRAFFIC	1-316-268-4034
COX COMMUNICATIONS	1-888-249-3530
KANSAS GAS SERVICE	1-888-482-4950
WESTAR ENERGY	1-800-544-4857

3. UTILITY SERVICE LINES, POLES, ETC. ARE TO BE ADJUSTED AS NECESSARY BY OTHERS PRIOR TO CONSTRUCTION UNLESS THE PLANS SPECIFICALLY CALL FOR THEIR ADJUSTMENT BY THE CONTRACTOR OR UNLESS THE PLANS SPECIFICALLY IDENTIFY A UTILITY TO BE ADJUSTED BY ITS OWNER DURING CONSTRUCTION. EXISTING UTILITIES AND THEIR LOCATION, AS SHOWN ON THE PLANS, REPRESENT THE BEST INFORMATION OBTAINABLE FOR DESIGN. THE CONTRACTOR WILL BE REQUIRED TO WORK AROUND EXISTING UTILITIES WITHIN THE RIGHT-OF-WAY WHICH DO NOT CONFLICT WITH PROPOSED CONSTRUCTION.

4. RUBBLE FROM THE REMOVAL OF MISCELLANEOUS STRUCTURES AND EXCESS EXCAVATION WHICH IS TO BE WASTED SHALL BE DISPOSED OF ON SITES TO BE PROVIDED BY THE CONTRACTOR. THESE SITES SHALL BE APPROVED BY THE ENGINEER AS TO SUITABILITY, APPEARANCE AND SITE LOCATION. LOCATIONS, IN THE OPINION OF THE ENGINEER, THAT WILL LEAVE AN UNSIGHTLY APPEARANCE WILL NOT BE APPROVED. ALL DISPOSAL SITES MUST BE APPROVED BY THE KANSAS DEPARTMENT OF HEALTH AND ENVIRONMENT. MATERIAL EITHER STOCKPILED OR DISPOSED OF IN A FLOOD PLAIN WILL REQUIRE A KANSAS STATE BOARD OF AGRICULTURE PERMIT. ANY MATERIAL DUMPED IN WATERS OF THE UNITED STATES OR WETLANDS IS SUBJECT TO U.S. CORPS OF ENGINEERS PERMITTING REGULATIONS. ANY MATERIAL BURIED OR STOCKPILED BEYOND APPROVED CONSTRUCTION LIMITS WILL REQUIRE ADDITIONAL ARCHAEOLOGICAL INVESTIGATIONS UNLESS BURIED IN A PREVIOUSLY APPROVED BORROW LOCATION.

5. TREES AND SHRUBS IN PUBLIC RIGHT-OF-WAY WHICH ARE IN DIRECT CONFLICT WITH PROPOSED NEW CONSTRUCTION SHALL BE REMOVED BY THE CONTRACTOR WITH THE CITY ENGINEER'S APPROVAL. TREES AND SHRUBS WHICH ARE NOT IN DIRECT CONFLICT WITH PROPOSED NEW CONSTRUCTION SHALL BE SAVED AND PROTECTED FROM DAMAGE.

6. THE CONTRACTOR SHALL GIVE ALL PROPERTY OWNERS AND/OR TENANTS OF DEVELOPED PROPERTY ADJUTING THE CONSTRUCTION OF THIS PROJECT A MINIMUM OF TEN (10) DAYS NOTICE PRIOR TO START OF CONSTRUCTION.

7. THE CONTRACTOR SHALL BE RESPONSIBLE FOR PRESERVING PROPERTY IRONS. THE CONTRACTOR WILL BE REQUIRED TO RE-ESTABLISH ANY PROPERTY IRONS WHICH ARE DAMAGED OR DESTROYED BY HIS CONSTRUCTION OPERATIONS. SUCH IRONS SHALL BE RE-ESTABLISHED BY A LICENSED LAND SURVEYOR IN ACCORDANCE WITH STATE LAWS.

8. THE ENGINEERING DIVISION SHALL FIELD LOCATE WATER VALVES ONE TIME DURING CONSTRUCTION WHEN REQUESTED BY THE CONTRACTOR. IT SHALL BE THE CONTRACTOR'S RESPONSIBILITY TO PRESERVE SUCH FIELD LOCATIONS DURING THE CONSTRUCTION PROCESS. WATER VALVES, VALVE BOXES OR FIRE HYDRANTS DAMAGED DURING CONSTRUCTION SHALL BE REPAIRED BY CONTRACTOR AT HIS OWN EXPENSE. VALVE BOXES AND WATER METERS WITHIN THE PROJECT LIMITS SHALL BE ADJUSTED TO MATCH FINAL GRADES BY THE CONTRACTOR.

9. THE CONTRACTOR SHALL NOTIFY THE CONSULTANT ENGINEER AND TOM MASON WITH THE CITY AT 316-268-4574 WITH THE CITY OF WICHITA WITH THE ANTICIPATED CONSTRUCTION START DATE AND NOTIFY THEM OF PROJECT COMPLETION. STAKING AND INSPECTION FOR THIS PROJECT WILL BE THE RESPONSIBILITY OF THE CONTRACTOR.

10. IF TRAFFIC WILL BE IMPACTED BY CONSTRUCTION, A TRAFFIC CONTROL PLAN MUST BE SUBMITTED AND APPROVED BY THE CITY TRAFFIC ENGINEER, BRIAN COON AT [TRAFFIC@WICHITA.GOV](mailto:TRAFFIC@WICHITA.GOV) BEFORE CONSTRUCTION CAN BEGIN. THE CONTRACTOR SHALL BE RESPONSIBLE FOR ALL TRAFFIC CONTROL MEASURES TO FACILITATE CONSTRUCTION. ALL CONSTRUCTION ZONE MARKINGS AND SIGNAGE SHALL CONFORM TO THE LATEST VERSION OF THE MANUAL ON UNIFORM TRAFFIC CONTROL DEVICES (MUTCD) AS PUBLISHED BY THE US DEPT. OF TRANSPORTATION, FEDERAL HIGHWAY ADMINISTRATION. ALL COSTS ASSOCIATED WITH CONSTRUCTION MARKINGS AND SIGNAGE SHALL BE THE CONTRACTORS RESPONSIBILITY.

11. ALL ELEVATIONS SHOWN ARE NAVD 88.

12. ALL AREAS DISTURBED DURING CONSTRUCTION THAT WILL NOT BE UNDER PROPOSED PAVEMENT SHALL BE RESTORED TO MATCH EXISTING CONDITIONS.

13. ANY SIDEWALK, DRIVE APPROACH, OR STREET PAVEMENT REMOVED TO CONSTRUCT PROJECT MUST HAVE A PAVEMENT CUT PERMIT AND BE REPLACED BY THE CITY CONTRACTOR. PERMITS CAN BE OBTAINED BY CALLING 316-268-4501 OR 316-268-4480.

14. CITY MAINTENANCE OF STORM SEWER ENDS AT THE LAST STRUCTURE IN THE EASEMENT OR RIGHT-OF-WAY.

15. A PORTION OF EXCESS EXCAVATED MATERIAL SHALL BE MOUNDED AROUND MANHOLES WHICH EXTEND MORE THAN ONE (1) FOOT ABOVE THE EXISTING GROUND. SUCH MOUND SHALL BE CONSTRUCTED WITH NEW DEVELOPMENT A SIX (6) FOOT DIAMETER FLAT TOP WITH 4 TO 1 SIDE SLOPES DOWN TO THE ORIGINAL GROUND. THE ELEVATION OF THE FLAT TOP OF THE MOUND SHALL BE 0.4 FOOT BELOW THE TOP TO THE MANHOLE.

16. CONTRACTOR SHALL LIMIT THE EXTENT OF TRENCH OPENINGS OVERNIGHT AND WEEKENDS TO LESS THAN 50 FEET.

17. THE INSPECTING FIRM SHALL SUBMIT TO THE CITY STORMWATER MAINTENANCE DIVISION A DIGITAL COPY OF THE CCTV INSPECTION OF THE CONDUITS AND STRUCTURES FOLLOWING CONSTRUCTION. THE DIGITAL FILE FORMATION SHALL BE COMPATIBLE WITH THE CITY INPUT TEMPLATE. A COPY OF THE TEMPLATE IS AVAILABLE UPON REQUEST AT 316-268-4090.

18. THE CONTRACTOR SHALL PROTECT FROM DAMAGE AND SUPPORT EXISTING UTILITIES THROUGH CONSTRUCTION AS APPROVED BY THE UTILITY OWNER AND THE ENGINEER AT THE CONTRACTORS EXPENSE.

19. THE CONTRACTOR SHALL RESTORE ALL DITCHES, SWALES, ROAD SHOULDERS, ENTRANCES AND BANK LINES TO THEIR ORIGINAL SLOPES AND GRADES EXCEPT AS SHOWN OTHERWISE.

20. ALL TRENCHING IN PAVEMENT OR DRIVEWAYS, WHICH WILL BE REQUIRED TO CARRY TRAFFIC UNTIL PERMANENT PAVING REPLACEMENT, SHALL BE TOPPED WITH A MINIMUM OF 6" CRUSHED ROCK (COMPACTED) TO BE INCIDENTAL TO THE PROJECT. THE CONTRACTOR SHALL BE REQUIRED TO MAINTAIN TEMPORARY CRUSHED ROCK UNTIL PERMANENT PAVEMENT IS INSTALLED.

21. THE CONTRACTOR SHALL RESTORE ALL DITCHES, SWALES, ROAD SHOULDERS, ENTRANCES AND BANK LINES TO THEIR ORIGINAL SLOPES AND GRADES EXCEPT AS SHOWN OTHERWISE.

22. SITE RESTORATION AND PREPARATION SHALL BE SUBSIDIARY TO THE PROJECT.
23. THE CONTRACTOR SHALL USE BEST MANAGEMENT PRACTICES (BMP'S) TO PREVENT ERODED SOIL FROM ENTERING DITCHES, CULVERTS AND DRAINAGE AREAS. THE CONTRACTOR SHALL FOLLOW THE INTENT OF THE BMP'S WHICH ACT AS A GUIDELINE.

24. EACH BIDDER SHALL VISIT THE SITE OF THE PROJECT BEFORE SUBMITTING A PROPOSAL IN ORDER TO BECOME BETTER INFORMED OF THE EXISTING FIELD CONDITIONS AND OBSTACLES WHICH MIGHT BE ENCOUNTERED DURING CONSTRUCTION. EACH BIDDER SHOULD UNDERSTAND THAT NO ADDITIONAL COMPENSATION WILL BE AWARDED FOR EXTRA WORK THAT SHOULD HAVE BEEN EVALUATED PRIOR TO BIDDING.

25. THE PRECAST MANUFACTURER SHALL PROVIDE A SEALED DESIGN DETAIL FOR ALL PRECAST ITEMS USED ON THE PROJECT TO INSURE THE INTENT OF THE PLANS ARE MET.

26. SHOP DRAWING, CATALOG CUTS, MATERIAL CERTIFICATIONS AND OTHER REQUIRED CONSTRUCTION RELATED ITEMS SHALL BE SUBMITTED TO THE INSPECTING ENGINEERING FIRM FOR REVIEW AND APPROVAL.

27. KAW VALLEY ENGINEERING CAN PROVIDE INSPECTION AND TESTING SERVICES. CONTACT MICHAEL COLLINS AT 785-223-2664.

**SAFETY NOTICE TO CONTRACTOR**  
IN ACCORDANCE WITH GENERALLY ACCEPTED CONSTRUCTION PRACTICES, THE CONTRACTOR WILL BE SOLELY AND COMPLETELY RESPONSIBLE FOR CONDITIONS OF THE JOB SITE, INCLUDING SAFETY OF ALL PERSONS AND PROPERTY DURING PERFORMANCE OF THE WORK. THIS REQUIREMENT WILL APPLY CONTINUOUSLY AND NOT BE LIMITED TO NORMAL WORKING HOURS.

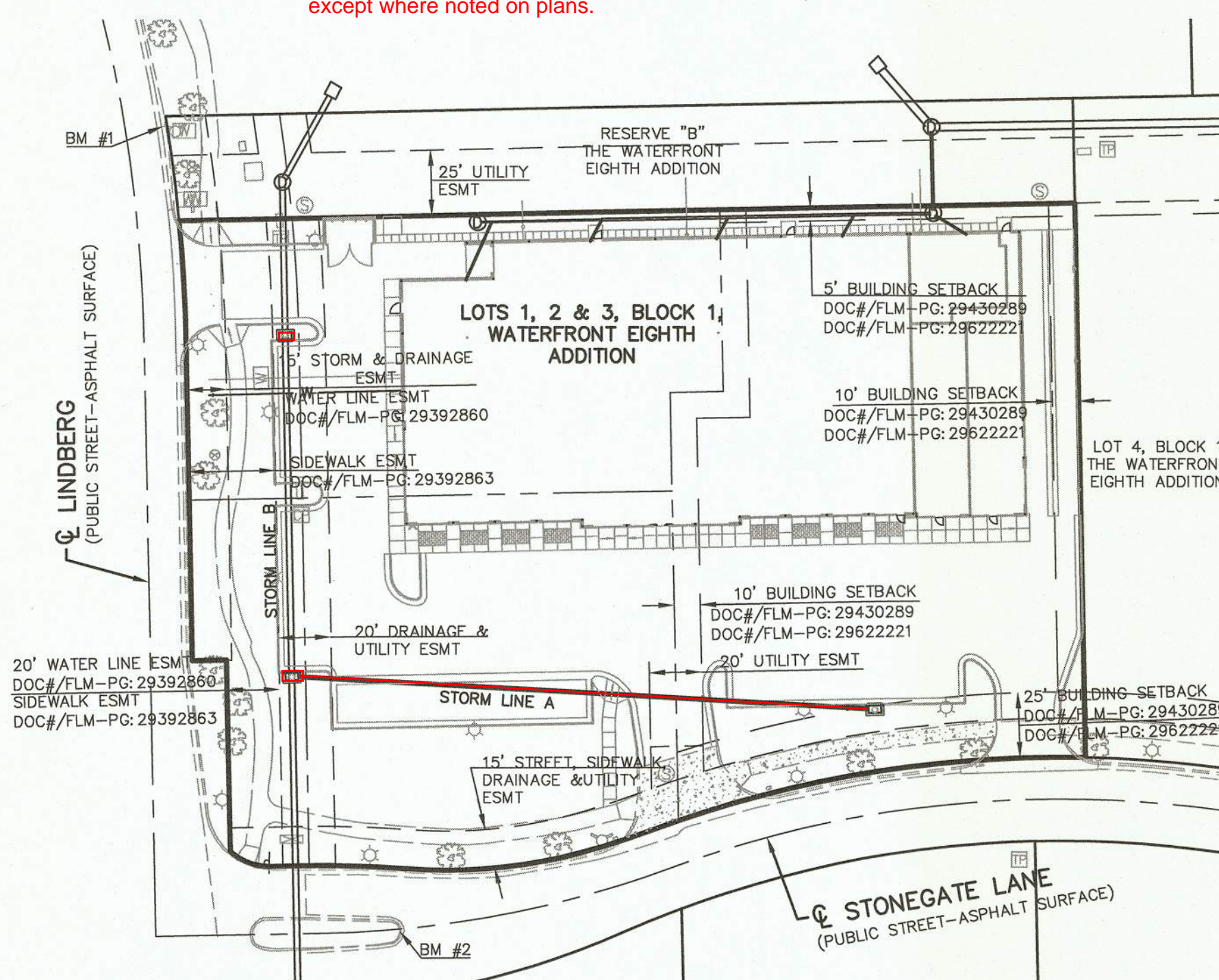
**WARRANTY / DISCLAIMER**  
THE DESIGNS REPRESENTED IN THESE PLANS ARE IN ACCORDANCE WITH ESTABLISHED PRACTICES OF CIVIL ENGINEERING FOR THE DESIGN FUNCTIONS AND USES INTENDED BY THE OWNER AT THIS TIME. HOWEVER, NEITHER KAW VALLEY ENGINEERING, INC NOR ITS PERSONNEL CAN OR DO WARRANTY THESE DESIGNS OR PLANS AS CONSTRUCTED, EXCEPT IN THE SPECIFIC CASES WHERE KAW VALLEY ENGINEERING PERSONNEL INSPECT AND CONTROL THE PHYSICAL CONSTRUCTION ON A CONTEMPORARY BASIS AT THE SITE.

**CAUTION - NOTICE TO CONTRACTOR**  
THE CONTRACTOR IS SPECIFICALLY CAUTIONED THAT THE LOCATION AND/OR ELEVATION OF EXISTING UTILITIES AS SHOWN ON THESE PLANS IS BASED ON RECORDS OF THE VARIOUS UTILITY COMPANIES AND, WHERE POSSIBLE, MEASUREMENTS TAKEN IN THE FIELD. THE INFORMATION IS NOT TO BE RELIED ON AS BEING EXACT OR COMPLETE. THE CONTRACTOR MUST CALL THE APPROPRIATE UTILITY COMPANY AT LEAST 72 HOURS BEFORE ANY EXCAVATION TO REQUEST EXACT FIELD LOCATION OF UTILITIES. IT SHALL BE THE RESPONSIBILITY OF THE CONTRACTOR TO RELOCATE ALL EXISTING UTILITIES WHICH CONFLICT WITH PROPOSED IMPROVEMENTS SHOWN ON THE PLANS.  
**THE CONTRACTOR SHALL EXPOSE EXISTING UTILITIES AT LOCATIONS OF POSSIBLE CONFLICTS PRIOR TO ANY CONSTRUCTION.**

# STORM SEWER IMPROVEMENTS to serve LOTS 1, 2 & 3, BLOCK 1 WATERFRONT EIGHTH ADD. 10322 E STONEGATE LN. CITY OF WICHITA, KANSAS

Gary Janzen, P.E. City Engineer  
Project Number  
0561 PPD (133119)

Date: 03-12-2020  
Inspector: M. Collins/A. Thompson  
Design/Inspecting Firm: Kaw Valley Engineering, Inc.  
Contractor: Crossland Construction  
Subcontractor: Sooter Excavating, Inc.  
Built in general conformance to construction plans,  
except where noted on plans.



## LEGAL DESCRIPTION

LOTS 1, 2, AND 3, BLOCK 1, THE WATERFRONT EIGHTH ADDITION, AN ADDITION TO WICHITA, SEDGWICK COUNTY, KANSAS.

THE COORDINATES PROVIDED IN THESE PLANS ARE FOR INFORMATION AND CHECKING PURPOSES ONLY. IT IS THE CONTRACTOR'S RESPONSIBILITY TO CALCULATE CONSTRUCTION STAKING COORDINATES ACCORDING TO THE DIMENSIONS SHOWN ON THESE PLANS. CONTRACTOR SHALL VERIFY THE ACCURACY OF THE COORDINATES SHOWN IN THE TABLE HEREON BEFORE CONSTRUCTION.

THIS PLAN SHEET IS PART OF AN OVERALL KAW VALLEY ENGINEERING PLAN SET FOR THE SPECIFIC IMPROVEMENTS CONTEMPLATED THEREIN. AS SUCH, THE INFORMATION CONTAINED MAY BE LIMITED AND SHOULD ONLY BE INTERPRETED WITHIN THE CONTEXT OF THE COMPLETE PLAN SET.

## BENCHMARKS

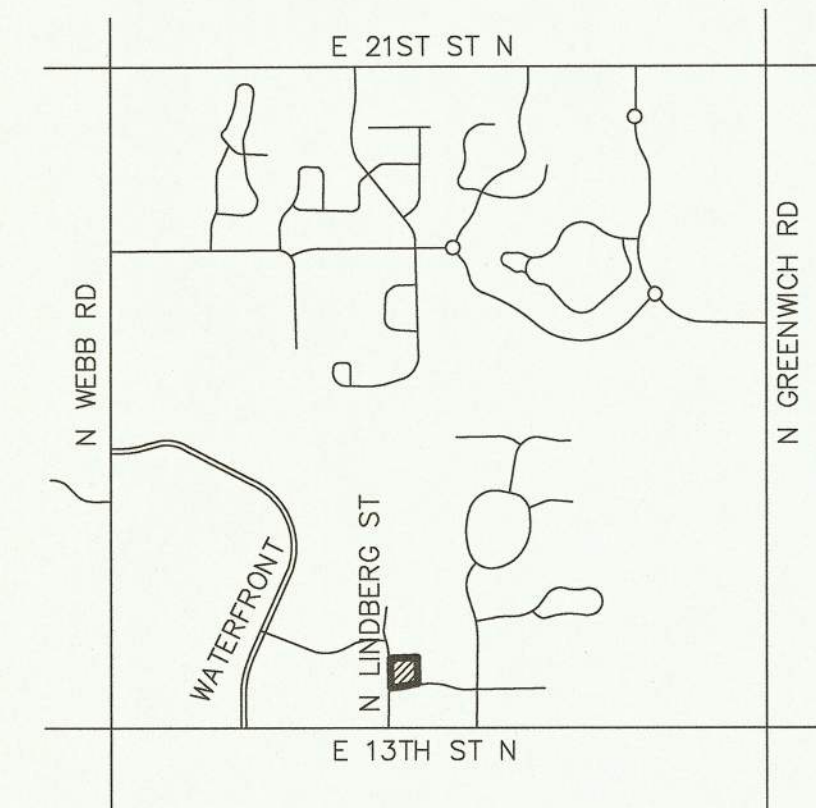
**DATUM BENCHMARK:**  
VERTICAL DATUM IS NAVD 88 ESTABLISHED USING OPUS PROJECTS ON PROJECT CONTROL.

**BENCHMARKS:**  
BM #1: SQUARE CUT IN TOP OF CURB 4.5' WEST OF FIRE HYDRANT NEAR NW CORNER OF LOT 1, BLOCK1, WATERFRONT EIGHTH ADDITION.  
ELEV=1385.82(NAVD 88)

BM #2: SQUARE CUT IN TOP OF CURB AT EAST END OF EAST MEDIAN AT INTERSECTION OF STONEGATE LANE AND LINDBERG STREET.  
ELEV=1383.39(NAVD 88)



TIMOTHY R. AUSTIN  
PROFESSIONAL ENGINEER



## VICINITY MAP

**Stormwater Certification:**  
New Development  
Stormwater Permit # *SW02019-0015*  
NOI Permit # S-AR94-1529 KSR114494

These construction plans were prepared in accordance with the current Stormwater Management Regulations as set forth in the City of Wichita's Stormwater Management Ordinance 16.32 and the policies/guidelines presented in the Wichita/Sedgwick County Stormwater Manual.

Site Area (Acers) = 78,097.16 SF (1.79 ACRES)  
Disturbed Area = 78,097.16 SF (1.79 ACRES)  
Water Quality Treatment: Offsite BMP Program  
Downstream Channel Protection: N/A  
Detention: Detention is provided by regional detention pond.  
The BMP used for this development is: Offsite BMP Program

APPROVED AS NOTED  
BY WICHITA PUBLIC WORKS ENGINEERING  
AND STORMWATER DIVISION

Engineering *Neth Gustafson* 4.12.19  
Stormwater *Joe Hubbe* 4-15-19

NOTE TO CONTRACTORS

Inspection and testing for this project is to be provided by a Licensed Consulting Engineering Firm under contract with the Owner/Developer. Said Inspection to be in accordance with the City of Wichita standard construction engineering practices and certified by a Licensed Professional Engineer in the state of Kansas. No work shall be performed the Contractor without such inspection nor shall any work be commenced without written authorization by City Engineering. All Construction and Materials shall comply with the current City of Wichita Specifications and Standards and Special Provisions. (on file and available at Wichita.gov).

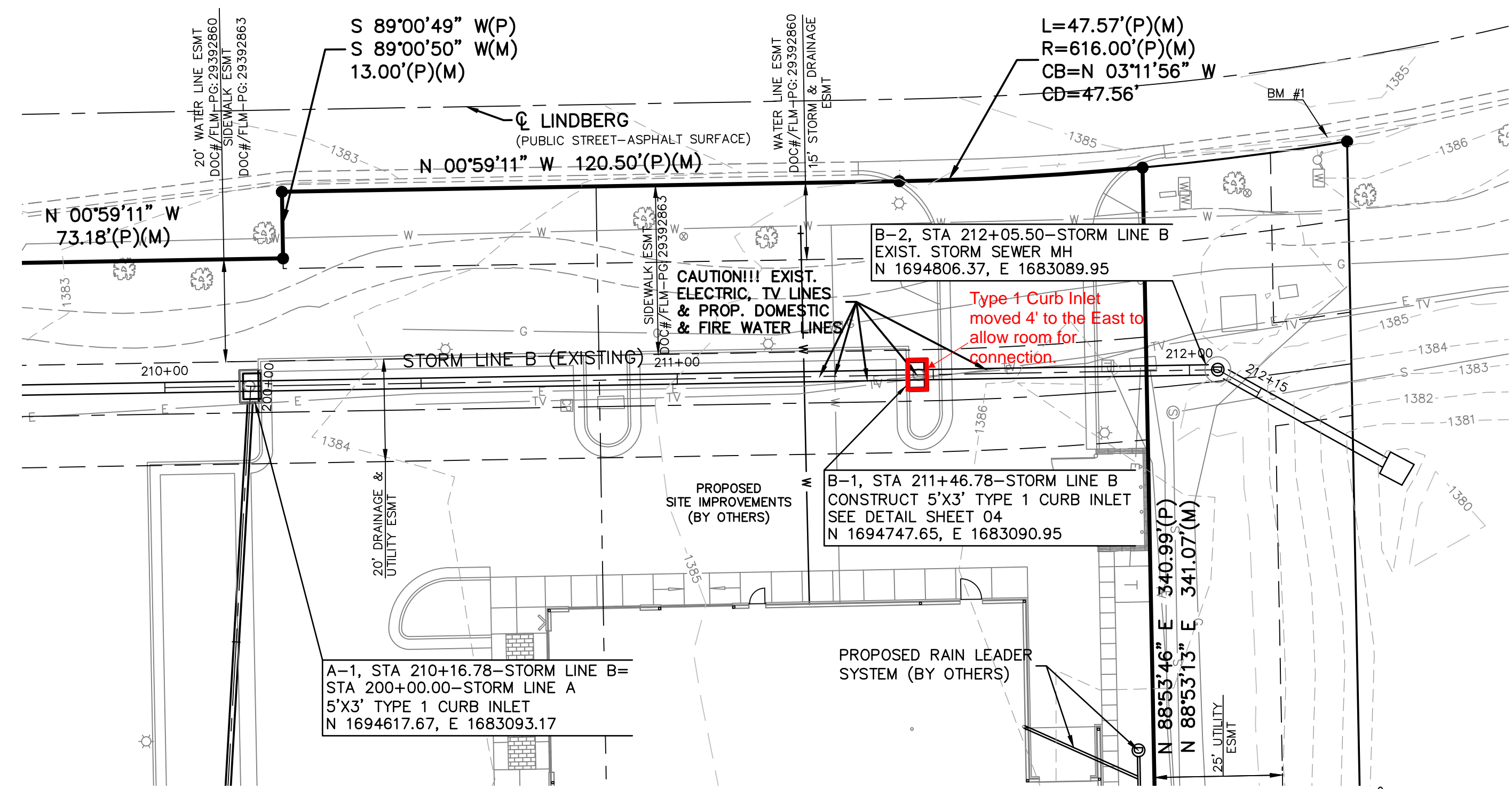
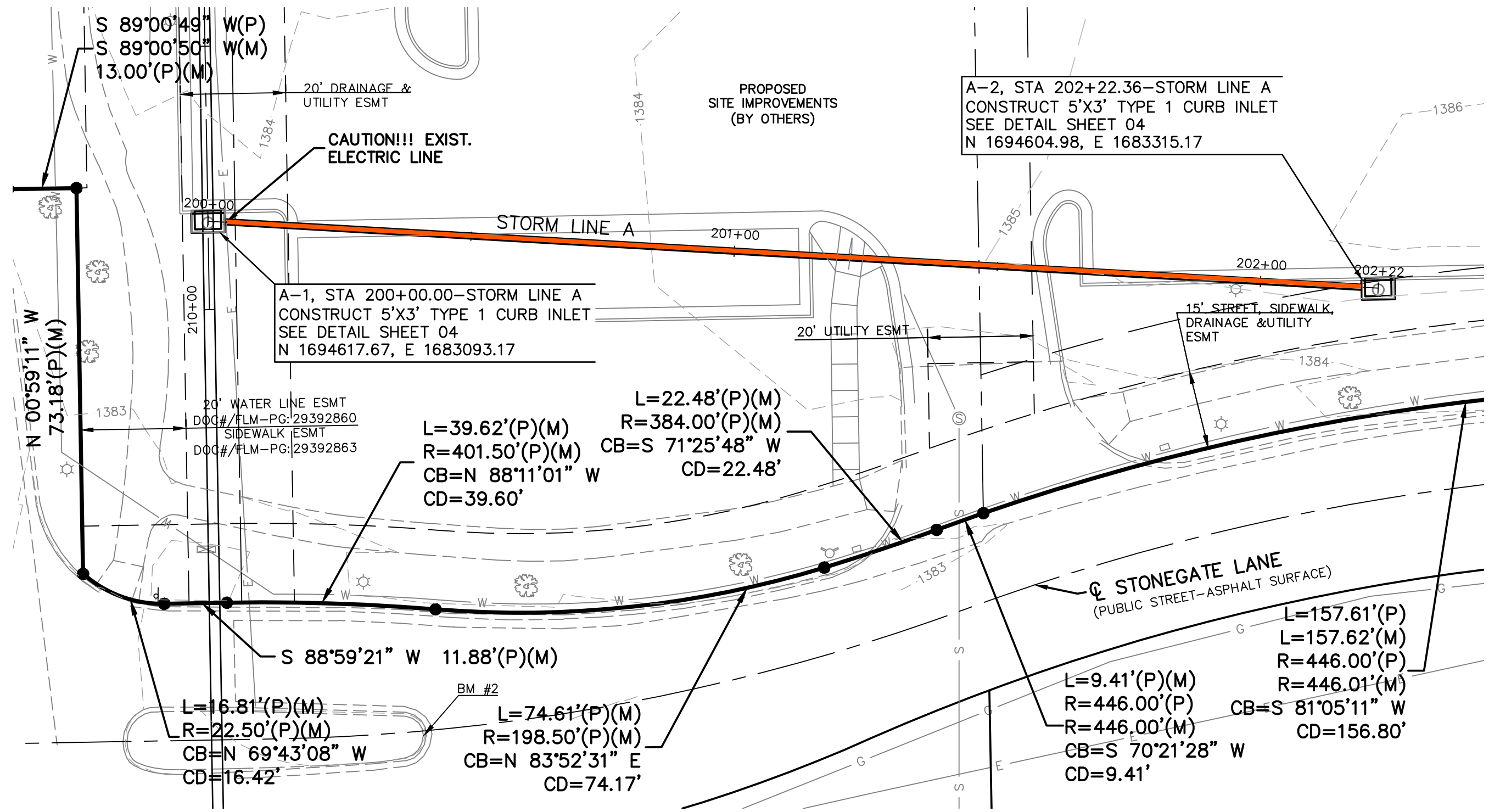
An approved copy of these plans signed by City staff are required on-site.

APRIL 2019

PROJ. NO. G16-0385 DSN: TRA  
CFN: 0385PPD DWN: EAM

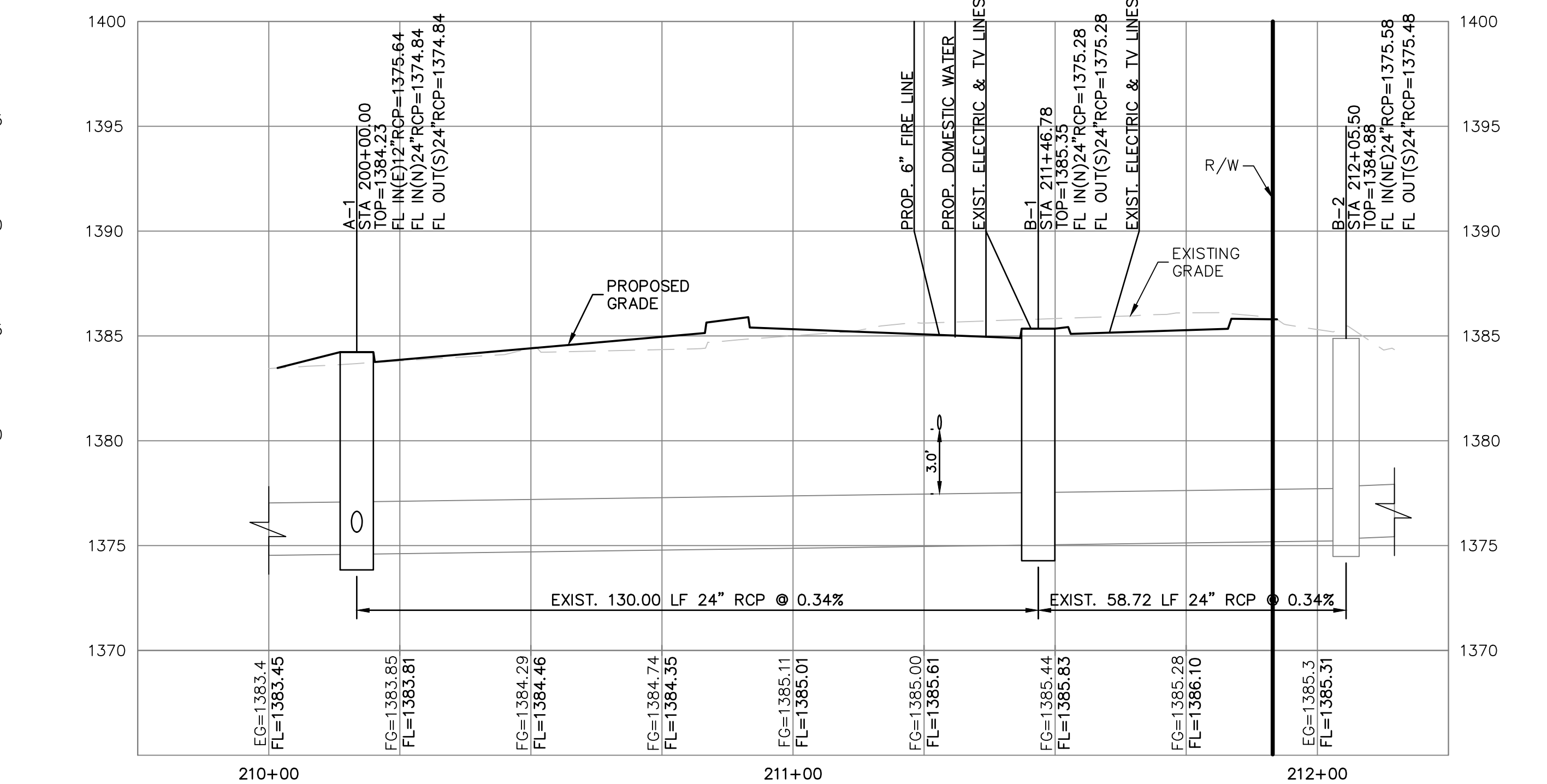
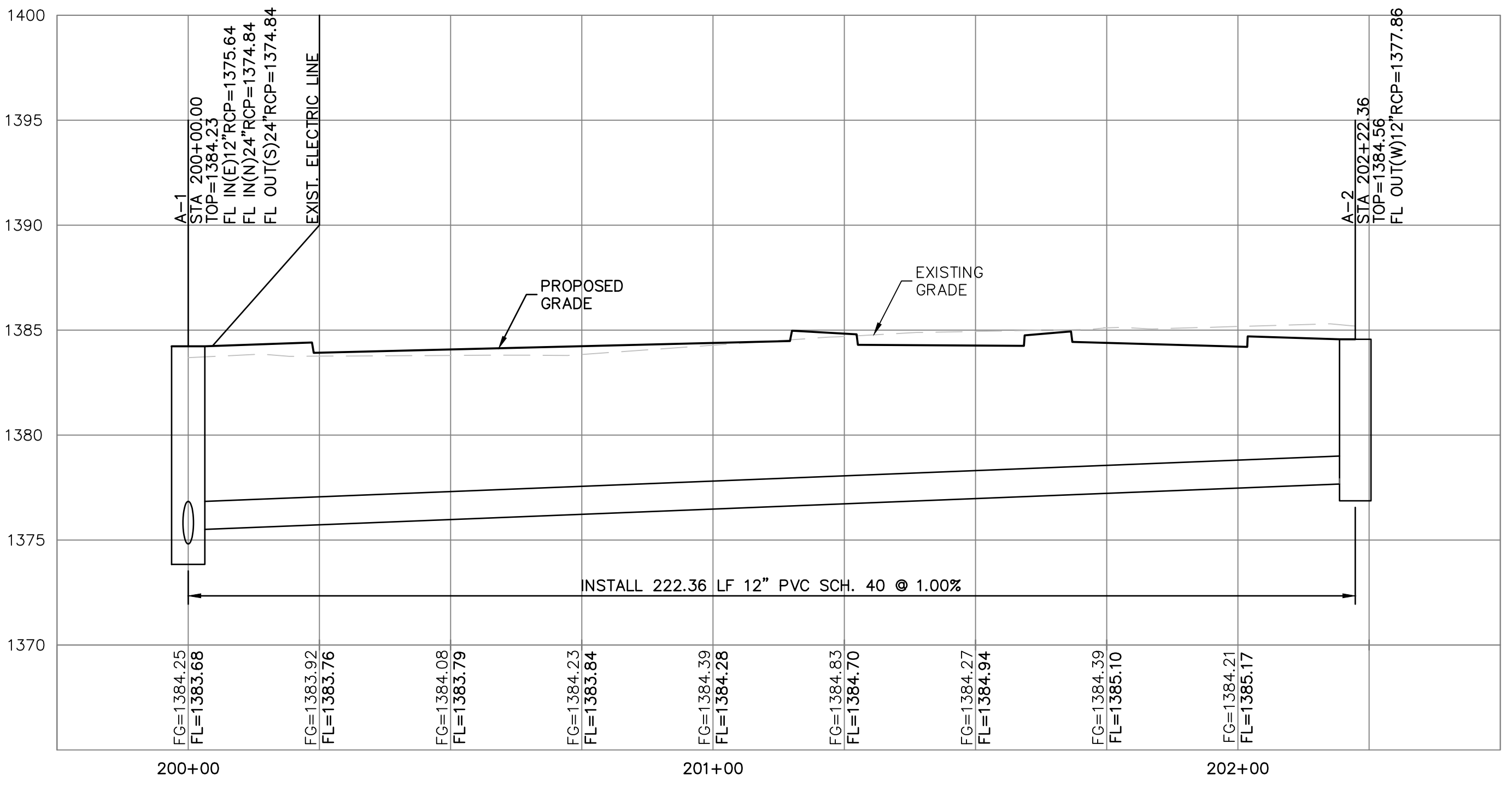
200 N. EMPORIA, SUITE 100  
WICHITA, KANSAS 67202  
PH. (316) 440-4304 | FAX (316) 440-4309  
www.kveng.com | www.kveng.com

**KAW VALLEY ENGINEERING**



STORM LINE A

STORM LINE B (EXISTING)



THIS PLAN SHEET IS PART OF AN OVERALL KAW VALLEY ENGINEERING PLAN SET FOR THE SPECIFIC IMPROVEMENTS CONTEMPLATED THEREIN. AS SUCH, THE INFORMATION CONTAINED MAY BE LIMITED AND SHOULD ONLY BE INTERPRETED WITHIN THE CONTEXT OF THE COMPLETE PLAN SET.

THE COORDINATES PROVIDED IN THESE PLANS ARE FOR INFORMATION AND CHECKING PURPOSES ONLY. IT IS THE CONTRACTOR'S RESPONSIBILITY TO CALCULATE CONSTRUCTION STAKING COORDINATES ACCORDING TO THE DIMENSIONS SHOWN ON THESE PLANS. CONTRACTOR SHALL VERIFY THE ACCURACY OF THE COORDINATES SHOWN IN THE TABLE HEREON BEFORE CONSTRUCTION.

DATUM BENCHMARK:  
VERTICAL DATUM IS NAVD 88 ESTABLISHED USING OPUS PROJECTS ON PROJECT CONTROL.

BENCHMARKS:  
BM #1: SQUARE CUT IN TOP OF CURB 4.5' WEST OF FIRE HYDRANT NEAR NW CORNER OF LOT 1, BLOCK1, WATERFORD EIGHTH ADDITION. ELEV=1385.82(NAVD 88)

BM #2: SQUARE CUT IN TOP OF CURB AT EAST END OF EAST MEDIAN AT INTERSECTION OF STONEGATE LANE AND LINDBERG STREET. ELEV=1383.39(NAVD 88)

ACCENT LIGHTING 10322 E STONEGATE LN. WICHITA, KS		KAW VALLEY ENGINEERING 200 N. EMPORIA, SUITE 100 WICHITA, KANSAS 67203-4400-4309 PH: (316) 261-4400 www.kaveg.com		TIMOTHY R. AUSTIN ENGINEER KS # 11496										
STORM SEWER PLAN & PROFILE		TIMOTHY R. AUSTIN ENGINEER KS # 11496		<table border="1"> <tr> <th>REV</th> <th>DATE</th> <th>DESCRIPTION</th> </tr> <tr> <td>1</td> <td>3-28-19</td> <td>FOR CITY APPROVAL</td> </tr> <tr> <td>0</td> <td>1-10-19</td> <td>FOR CITY REVIEW</td> </tr> </table>		REV	DATE	DESCRIPTION	1	3-28-19	FOR CITY APPROVAL	0	1-10-19	FOR CITY REVIEW
REV	DATE	DESCRIPTION												
1	3-28-19	FOR CITY APPROVAL												
0	1-10-19	FOR CITY REVIEW												
DESIGNER	TRA	DRAWN BY	EAM	MLT	TRA									
CFN		CHECKED BY	EAM	TRA	TRA									
SHEET	0385DPP	DATE		DSN	DWN									
	02				CHK									















CERTIFICATE OF SURVEY

I, Gregory J. Allison, a registered land surveyor in Kansas, do hereby certify that I have been in responsible charge of surveying and plating of THE WATERFRONT EIGHTH ADDITION...

A replat of Lot 4, Block 1, and Reserve "C", The Waterfront Sixth Addition, an addition to Wichita, Sedgwick County, Kansas.

All easements, rights-of-way, building setbacks, access controls, together with all other public dedications within the above described property, are hereby vacated and replated by virtue of K.S.A. 12-512b.

I hereby certify that the details of this plat are correct to the best of my knowledge and belief this 15th day of March, 2013.



Gregory J. Allison, PE, LS #1257  
MKEC Engineering Consultants, Inc.  
411 North Webb Road  
Wichita, Kansas 67206

OWNER'S CERTIFICATE

Know all men by these presents that we the undersigned property owners of the land above set forth in the Registered Land Surveyor's Certificate, have caused the same to be surveyed and platted into Lots, Blocks, Reserves, and a Street the same to be known as THE WATERFRONT EIGHTH ADDITION...

All abutters rights of access to or from 13th Street over and across the south line of THE WATERFRONT EIGHTH ADDITION, are hereby granted to the appropriate governing body, provided however Block 2, shall be placed accordingly...

Assessments for the construction and maintenance of public streets, utilities, sidewalks, and drainage, as indicated herein, are hereby granted to the public.

The Street is hereby dedicated to and for the use of the public.

A drainage plan has been developed for this plat. All drainage easements, rights-of-way, or reserves shall remain an established grade or as modified with the approval of the applicable City or County Engineer...

Lots 1, 3, 4, and 5, Block 1, are required to adhere to the minimum pad elevation herein.

Reserves "A", "B", "C", and "D" are platted for berms, landscaping, irrigation, open space, monuments, sidewalks, and utilities in designated locations by easement. Reserve "B" is also platted for drainage...

Beech Lake Investments, LLC, a Kansas Limited Liability Company and also; The Waterfront Holding Co., LLC, a Kansas Limited Liability Company

Stephen L. Clark, Manager

STATE OF KANSAS, SEDGWICK COUNTY) ss: This instrument was acknowledged before me on 14th day of March, 2013, by Robert W. Stevens and Stephen L. Clark, Managers of Beech Lake Investments, LLC, a Kansas Limited Liability Company, and also; The Waterfront Holding Co., LLC, a Kansas Limited Liability Company.

IN WITNESS WHEREOF, I have hereunto set my hand and affixed my official seal, the day and year last above written.

SANDRA M. STEVENS, Notary Public, State of Kansas, My Term Expires: 9-20-2014

MORTGAGE CERTIFICATE

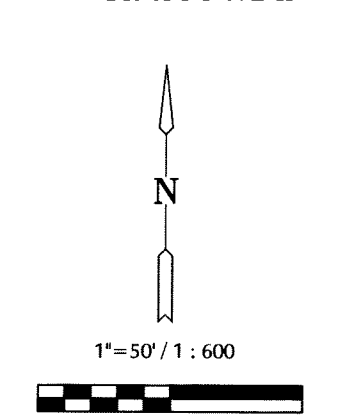
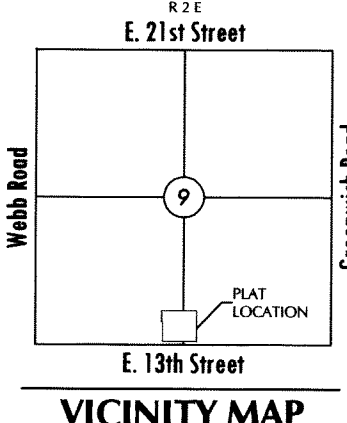
COMMERCIAL BANK, N.A. holder of a mortgage on the above described property, does hereby consent to the plat of THE WATERFRONT EIGHTH ADDITION.

Collin Stieben, Senior Vice President

This instrument was acknowledged before me on this 14th day of March, 2013, by Collin Stieben, Senior Vice President, COMMERCIAL BANK, N.A.

IN WITNESS WHEREOF, I have hereunto set my hand and affixed my official seal, the day and year last above written.

CHAD HANSON, Notary Public, State of Kansas, My Term Expires: 9-16-15



Basis of Bearing: Kansas coordinate system of 1983 south zone grid bearing of N89°00'49"E along the S. line of SW 1/4, Sec. 9, T27S, R2E, 6th P.M.

This plat is surveyed and platted on NAD83 using Kansas state plane south zone coordinates, modified to the surface, having a combined adjustment scale factor of 1.000120014401728

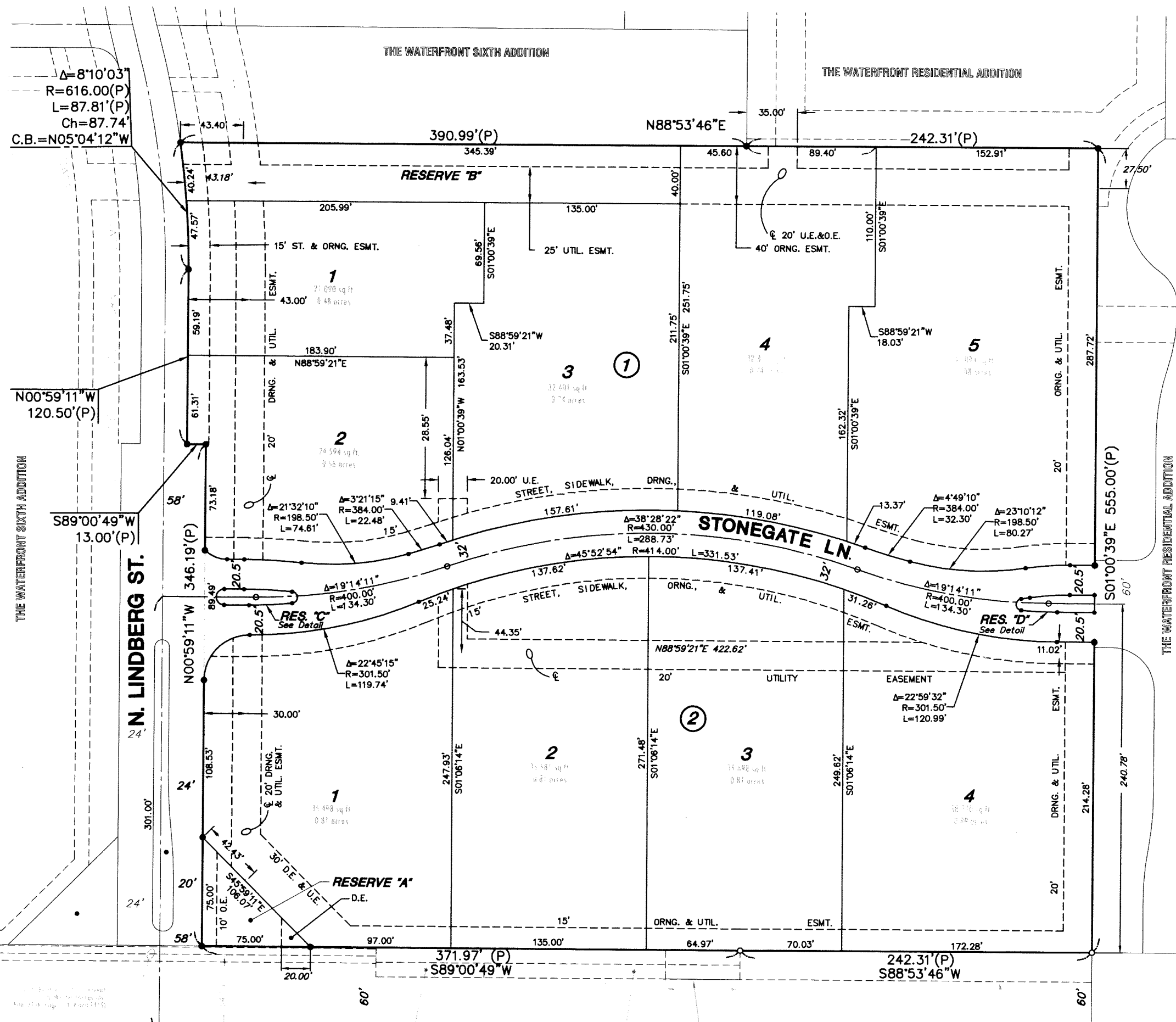
LEGEND

- Section Corner Monument Found
Found 3/8" Rebar w/ MKEC CLS 39 id. cap
Set 3/8" rebar w/ MKEC CLS 39 id. cap
Platted
Measured
Drainage Easement
Utility Easement
Drainage
Street
Utility
Easement

SW. cor., SW 1/4, Sec. 9, T27S, R2E, 6th P.M. Fnd. chiseled "X"

DETAIL RESERVE "C" and "D" diagrams showing specific measurements and bearings for reserves.

FINAL PLAT THE WATERFRONT EIGHTH ADDITION AN ADDITION TO WICHITA, SEDGWICK COUNTY, KANSAS



MINIMUM PAD ELEVATION (LOWEST BUILDING CORNER) table with columns for Lots, Block, and Elevation.

NOTES: Access Controls: 13th Street - Access points for Block 2 shall be placed accordingly. The minimum distance between full turning movement drives shall be 400'. The minimum distance between a right-in/right-out drive and either another right-in/right-out drive or a full movement drive shall be 200'.

PLANNING COMMISSION CERTIFICATE

This plat of THE WATERFRONT EIGHTH ADDITION has been submitted to and approved by the Wichita-Sedgwick County Metropolitan Area Planning Commission, Wichita, Kansas. Dated this 6th day of December, 2012.

WICHITA-SEDGWICK COUNTY METROPOLITAN AREA PLANNING COMMISSION

David Dennis, Chair; John L. Schlegel, Secretary

GOVERNING BODY CERTIFICATE

This plat approved and all dedications shown hereon accepted by the City Council of the City of Wichita, this 16th day of April, 2013.

At the direction of the City Council: Carl Brewer, Mayor; Karen Sublett, City Clerk

TRANSFER RECORD

STATE OF KANSAS, SEDGWICK COUNTY) ss: Entered on transfer record this 28th day of April, 2013.

Kelly B. Arnold, County Clerk

REGISTER OF DEEDS CERTIFICATE

STATE OF KANSAS, SEDGWICK COUNTY) ss: This is to certify that this instrument was filed for record in the Register of Deeds Office, at 3:14:59 p.m. on the 25th day of April, 2013.

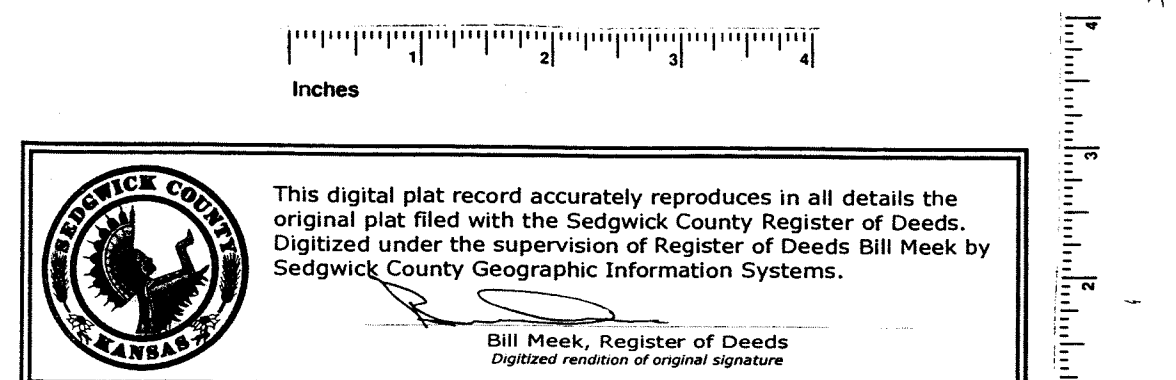
Bill Meek, Register of Deeds; Tonya E. Buckingham, Deputy

Tricia L. Kabelle, LS #1246, Deputy County Surveyor, Sedgwick County, Kansas

COUNTY SURVEYOR

Reviewed in accordance with K.S.A. 58-2005 on this 27th day of March, 2013.

MKEC ENGINEERING CONSULTANTS, INC. 411 N. WEBB ROAD WICHITA, K.S. 67206 316-684-9600



Professional seals for Timothy R. Austin (Engineer #11496) and Kaw Valley Engineering, Inc. (Authorized to Offer Engineering Services in Kansas). Includes a table with columns for EAM, TRA, DSN, MLT, TRR, DWN, CHK and rows for City Approval, Date, and Description.

ACCENT LIGHTING 10322 E STONEGATE LN. WICHITA, KS

Table with columns: PROJ. NO. (G16\_0385), DESIGNER (TRA), DRAWN BY (EAM), SHEET (0385PLAT), REV (10), PLAT (B).