

AS BUILT PLANS
 Contractor: APEX Excavating
 Inspector: Larry Powell, Baughman Co.
 As Builts by: KEK, 4/2/20

STORM SEWER IMPROVEMENTS

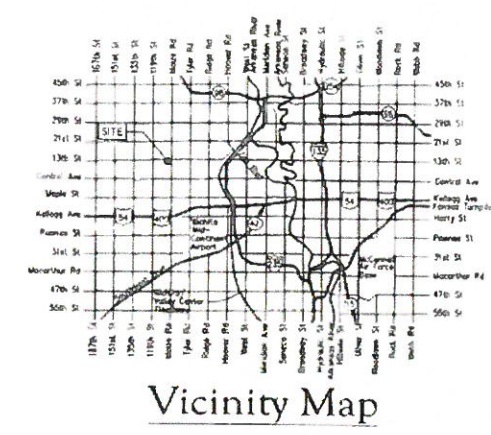
to serve

CAP Maize Storage Facility

10405 W. 13th Street N

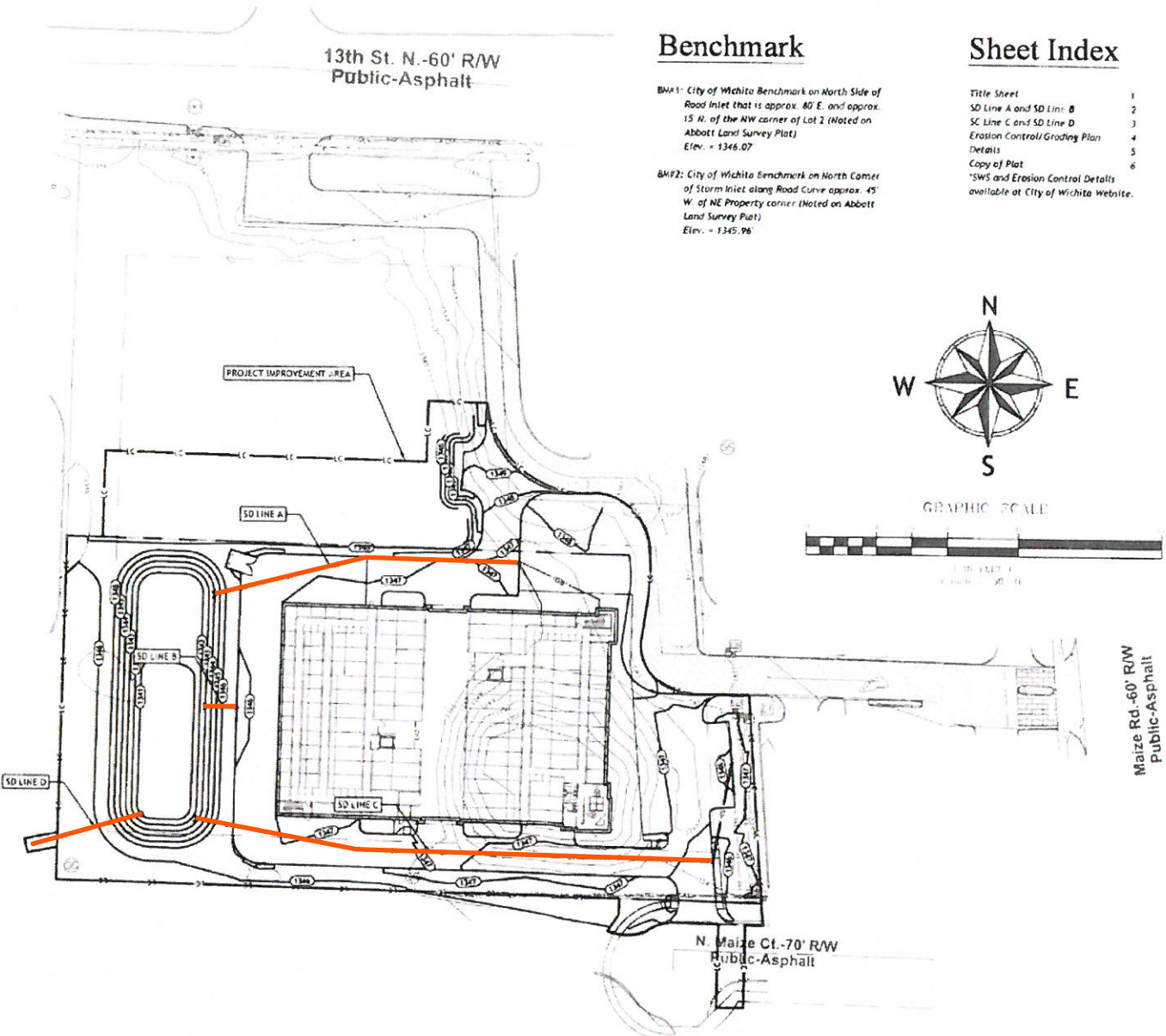
CITY OF WICHITA, KANSAS

Gary Janzen, P.E. City Engineer
 Project Number
 586 PPD (133119)



GENERAL NOTES:

- The Contractor shall comply with all applicable safety regulations. All construction shall be completed following current City Standard Specifications and Special Provisions.
- Contractor will be required to provide notice to utility companies a minimum of seventy-two (72) hours prior to any excavation, as follows:
 Kansas One-Call 687-2470
 The Contractor must notify the following in case of an emergency:
 AT&T 1-800-246-8464
 Black Hills Energy 1-800-694-8989
 City of Wichita Water & Sewer 1-316-219-8921
 City of Wichita Stormwater 1-316-268-4090
 City of Wichita Traffic 1-316-268-4034
 Cox Communications 1-888-249-3530
 Kansas Gas Service 1-888-482-4950
 Westar Energy 1-800-544-4857
- Utility service lines, poles, etc. are to be adjusted as necessary by others prior to construction unless the plans specifically call for their adjustment by the Contractor or unless the plans specifically identify a utility to be adjusted by its owner during construction. Existing utilities and their location, as shown on the plans, represent the best information obtainable for design. The Contractor will be required to work around existing utilities within the right-of-way which do not conflict with proposed construction.
- Rubble from the removal of miscellaneous structures and excess excavation which is to be wasted shall be disposed of on sites to be provided by the Contractor. These sites shall be approved by the Engineer as to suitability, appearance and site location. Locations, in the opinion of the Engineer, that will leave an unsightly appearance will not be approved. All disposal sites must be approved by the Kansas Department of Health and Environment. Material either stockpiled or disposed of in a flood plain will require a Kansas State Board of Agriculture permit. Any material dumped in waters of the United States or wetlands is subject to U.S. Corps of Engineers permitting regulations. Any material buried or stockpiled beyond approved construction limits will require additional archaeological investigations unless buried in a previously approved borrow location.
- Trees and shrubs in public right-of-way which are in direct conflict with proposed new construction shall be removed by the Contractor with the City Engineer's approval. Trees and shrubs which are not in direct conflict with proposed new construction shall be saved and protected from damage.
- The Contractor shall give all property owners and/or tenants of developed property abutting the construction of this project a minimum of ten (10) days notice prior to start of construction.
- The Contractor shall be responsible for preserving property irons. The Contractor will be required to re-establish any property irons which are damaged or destroyed by his construction operations. Such irons shall be re-established by a licensed land surveyor in accordance with state laws.
- The Engineering Division shall field locate water valves one time during construction when requested by the Contractor. It shall be the Contractor's responsibility to preserve such field locations during the construction process. Water valves, valve boxes or fire hydrants damaged during construction shall be repaired by Contractor at his own expense. Valve boxes and water meters within the project limits shall be adjusted to match final grades by the contractor.
- The Contractor shall notify the inspecting engineer and Tom Mason at 316-268-4574 with the City of Wichita with the anticipated construction start date and notify them of project completion. Staking and inspection for this project will be the responsibility of the Contractor.
- If traffic will be impacted by construction, a traffic control plan must be submitted and approved by the City Traffic Engineer, Brian Coan at traffic@wichita.gov before traffic@wichita.gov before construction can begin. The Contractor shall be responsible for all traffic control measures to facilitate construction. All construction zone markings and signage shall conform to the latest version of the Manual on Uniform Traffic Control Devices (MUTCD) as published by the US Dept. of Transportation, Federal Highway Administration. All costs associated with construction markings and signage shall be the Contractor's responsibility.
- All elevations shown are NAVD 88.
- All areas disturbed during construction that will not be under proposed pavement shall be restored to match existing conditions.
- Any sidewalk, drive approach, or street pavement removed to construct project must have a pavement cut permit and be replaced by the City contractor. Permits can be obtained by calling 316-268-4501 or 316-268-4480.
- City maintenance of storm sewer ends at the last structure in the easement or right-of-way.
- A portion of excess excavated material shall be mounded around manholes which extend more than one (1) foot above the existing ground. Such mound shall be constructed with new development a six (6) foot diameter flat top with 4 to 1 side slopes down to the original ground. The elevation of the flat top of the mound shall be 0.4 foot below the top of the manhole.
- Geotechnical report available upon request.
- Contractor shall limit the extent of trench openings overnight and weekends to less than 50 feet.
- The inspecting firm shall submit to the City Stormwater Maintenance Division a digital copy of the CCTV inspection of the conduits and structures following construction. The digital file format shall be compatible with the City input template. A copy of the template is available upon request at 316-268-4090.
- The Contractor shall protect from damage and support existing utilities through construction as approved by the utility owner and the Engineer at the contractor's expense.



Stormwater Certification

New Development or Redevelopment (Circle One)

Stormwater Permit # **SW102019-0034**

NO Permit # 5-AR94-1534

These construction plans were prepared in accordance with the current Stormwater Management Regulations as set forth in the City of Wichita's Stormwater Management Ordinance 16.32 and the policies/guidelines presented in the Wichita, Sedgwick County Stormwater Manual.

Site Area (Acres) = 2.52
 Disturbed Area (Acres) = 3.20
 Water Quality Treatment: Off-Site BMP Program
 Downstream Channel Protection: N/A
 Detention: Conventional Dry Detention Pond
 The BMP used for this development is: See Erosion Control Plan

APPROVED AS NOTED
 BY WICHITA PUBLIC WORKS ENGINEERING AND STORMWATER DIVISION

Engineering: **Keith Gutcher 6.11.19**
 Stormwater: **Joe Heible 6.24.19**

NOTE TO CONTRACTORS

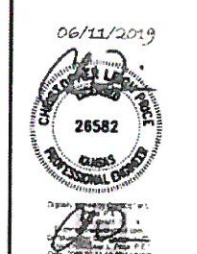
Inspection and testing for this project is to be provided by a Licensed Consulting Engineering Firm under contract with the Owner/Developer. Soil inspection to be in accordance with the City of Wichita standard construction engineering practices and certified by a Licensed Professional Engineer in the state of Kansas. No work shall be performed by the Contractor without such inspection nor shall any work be commenced without written authorization by City Engineering. All Construction and Materials shall comply with the current City of Wichita Specifications and Standards and Special Provisions. (on file and available at Wichita.gov)

An approved copy of these plans signed by City staff are required on-site.

Owner:
 CAP Storage Pool 1, LLC
 935 S. Main St. Ste 202
 Greenville, SC 29601

bluewater civil design
 bluewater civil design, LLC
 718 Lowndes Hill Road • Greenville, SC 29607
 www.bluewatercivil.com • info@bluewatercivil.com

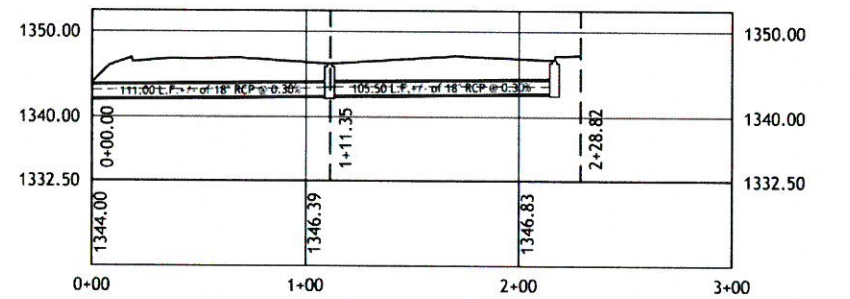
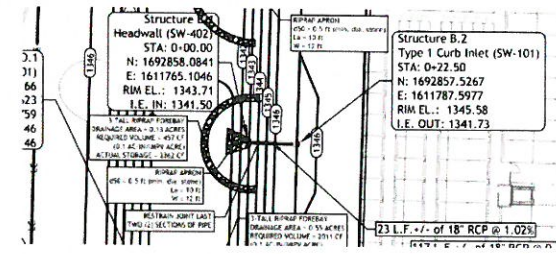
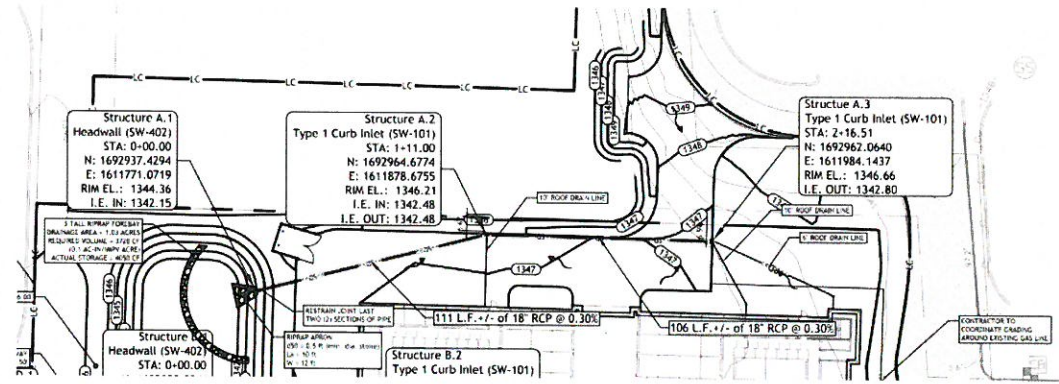
CAP MAIZE INDOOR STORAGE FACILITY
 N. Maize Ct. & Maize Rd N
 Wichita, Kansas



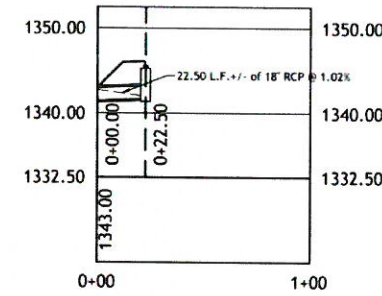
| DATE | SCALE | FILE |
|----------|----------|--------|
| 11/19/14 | AS SHOWN | 133119 |
| 06/11/19 | AS SHOWN | 133119 |

Title Sheet
 1





SD LINE A
Horizontal Scale: 1" = 40'
Vertical Scale: 1" = 10'



SD LINE B
Horizontal Scale: 1" = 40'
Vertical Scale: 1" = 10'

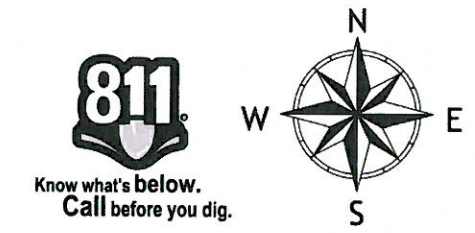
| 2-YEAR | | | | | | | | | | | | | | | | | | | | | | |
|----------|-----------------|----------------|----------------|------------------|------------|------------|-----------------|----------------|------------------|-------------------|---------------|-----------------|-----------------|--------------|---------------|---------------|-----------------|-----------------|------------|------------|----------------|----------------|
| Line ID | LineLength (ft) | Incr.Area (ac) | TotalArea (ac) | RunoffCoeff. (C) | Incr.C x A | TotalC x A | InletTime (min) | TimeConc (min) | Rnfallnt (in/hr) | TotalRunoff (cfs) | AdmFlow (cfs) | TotalFlow (cfs) | CapacFull (cfs) | Veloc (ft/s) | PipeSize (in) | PipeSlope (%) | Inv ElevDn (ft) | Inv ElevUp (ft) | HGLDn (ft) | HGLUp (ft) | Gmd/RimDn (ft) | Gmd/RimUp (ft) |
| Pipe A.1 | 111 | 0.5 | 1.1 | 0.98 | 0.49 | 1.08 | 15 | 16.6 | 3.7 | 3.41 | 0 | 3.41 | 5.73 | 2.88 | 18 | 0.3 | 1342.15 | 1342.48 | 1343.19 | 1343.36 | 1344.36 | 1346.29 |
| Pipe A.2 | 106 | 0.6 | 0.6 | 0.98 | 0.59 | 0.59 | 15 | 15 | 3.3 | 1.96 | 0 | 1.96 | 5.78 | 2 | 18 | 0.3 | 1342.48 | 1342.8 | 1343.44 | 1343.52 | 1346.29 | 1346.05 |
| Pipe C.1 | 117 | 0.1 | 0.55 | 0.98 | 0.1 | 0.54 | 15 | 23.6 | 2.6 | 1.4 | 0 | 1.4 | 5.82 | 1.6 | 18 | 0.31 | 1340.75 | 1341.11 | 1341.68 | 1341.74 | 1342.96 | 1346.19 |
| Pipe C.2 | 117 | 0.09 | 0.45 | 0.98 | 0.09 | 0.44 | 15 | 21.2 | 2.8 | 1.22 | 0 | 1.22 | 5.73 | 2.1 | 18 | 0.3 | 1341.11 | 1341.46 | 1341.77 | 1341.93 | 1346.19 | 1346.03 |
| Pipe C.3 | 132 | 0.14 | 0.36 | 0.98 | 0.14 | 0.35 | 15 | 17.9 | 3 | 1.07 | 0 | 1.07 | 5.79 | 2.32 | 18 | 0.3 | 1341.46 | 1341.86 | 1341.98 | 1342.28 | 1346.03 | 1345.17 |
| Pipe C.4 | 70 | 0.22 | 0.22 | 0.98 | 0.22 | 0.22 | 15 | 15 | 3.3 | 0.72 | 0 | 0.72 | 6.4 | 1.97 | 18 | 0.37 | 1341.96 | 1342.22 | 1342.44 | 1342.55 | 1345.17 | 1345.81 |
| Pipe B.1 | 23 | 0.13 | 0.13 | 0.98 | 0.13 | 0.13 | 15 | 15 | 3.3 | 0.43 | 0 | 0.43 | 10.62 | 1.29 | 18 | 1.02 | 1341.5 | 1341.73 | 1342.75 | 1341.97 | 1343.71 | 1346.08 |
| 5-YEAR | | | | | | | | | | | | | | | | | | | | | | |
| Pipe A.1 | 111 | 0.5 | 1.1 | 0.98 | 0.49 | 1.08 | 15 | 16.3 | 4 | 4.31 | 0 | 4.31 | 5.73 | 3.41 | 18 | 0.3 | 1342.15 | 1342.48 | 1343.19 | 1343.46 | 1344.36 | 1346.29 |
| Pipe A.2 | 106 | 0.6 | 0.6 | 0.98 | 0.59 | 0.59 | 15 | 15 | 4.2 | 2.45 | 0 | 2.45 | 5.78 | 2.12 | 18 | 0.3 | 1342.48 | 1342.8 | 1343.56 | 1343.64 | 1346.29 | 1346.05 |
| Pipe C.1 | 117 | 0.1 | 0.55 | 0.98 | 0.1 | 0.54 | 15 | 21.9 | 3.4 | 1.83 | 0 | 1.83 | 5.82 | 2.01 | 18 | 0.31 | 1340.75 | 1341.11 | 1341.68 | 1341.77 | 1342.96 | 1346.19 |
| Pipe C.2 | 117 | 0.09 | 0.45 | 0.98 | 0.09 | 0.44 | 15 | 20 | 3.6 | 1.58 | 0 | 1.58 | 5.73 | 2.34 | 18 | 0.3 | 1341.11 | 1341.46 | 1341.82 | 1342 | 1346.19 | 1346.03 |
| Pipe C.3 | 132 | 0.14 | 0.36 | 0.98 | 0.14 | 0.35 | 15 | 17.3 | 3.9 | 1.37 | 0 | 1.37 | 5.79 | 2.46 | 18 | 0.3 | 1341.46 | 1341.86 | 1342.06 | 1342.34 | 1346.03 | 1345.17 |
| Pipe C.4 | 70 | 0.22 | 0.22 | 0.98 | 0.22 | 0.22 | 15 | 15 | 4.2 | 0.9 | 0 | 0.9 | 6.4 | 1.98 | 18 | 0.37 | 1341.96 | 1342.22 | 1342.52 | 1342.61 | 1345.17 | 1345.81 |
| Pipe B.1 | 23 | 0.13 | 0.13 | 0.98 | 0.13 | 0.13 | 15 | 15 | 4.2 | 0.53 | 0 | 0.53 | 10.62 | 1.4 | 18 | 1.02 | 1341.5 | 1341.73 | 1342.75 | 1342 | 1343.71 | 1346.08 |
| 10-YEAR | | | | | | | | | | | | | | | | | | | | | | |
| Pipe A.1 | 111 | 0.5 | 1.1 | 0.98 | 0.49 | 1.08 | 15 | 16.1 | 4.6 | 5 | 0 | 5 | 5.73 | 3.75 | 18 | 0.3 | 1342.15 | 1342.48 | 1343.19 | 1343.56 | 1344.36 | 1346.29 |
| Pipe A.2 | 106 | 0.6 | 0.6 | 0.98 | 0.59 | 0.59 | 15 | 15 | 4.8 | 2.83 | 0 | 2.83 | 5.78 | 2.15 | 18 | 0.3 | 1342.48 | 1342.8 | 1343.67 | 1343.74 | 1346.29 | 1346.05 |
| Pipe C.1 | 117 | 0.1 | 0.55 | 0.98 | 0.1 | 0.54 | 15 | 21 | 4 | 2.17 | 0 | 2.17 | 5.82 | 2.3 | 18 | 0.31 | 1340.75 | 1341.11 | 1341.68 | 1341.8 | 1342.96 | 1346.19 |
| Pipe C.2 | 117 | 0.09 | 0.45 | 0.98 | 0.09 | 0.44 | 15 | 19.3 | 4.2 | 1.86 | 0 | 1.86 | 5.73 | 2.5 | 18 | 0.3 | 1341.11 | 1341.46 | 1341.86 | 1342.05 | 1346.19 | 1346.03 |
| Pipe C.3 | 132 | 0.14 | 0.36 | 0.98 | 0.14 | 0.35 | 15 | 17 | 4.5 | 1.59 | 0 | 1.59 | 5.79 | 2.54 | 18 | 0.3 | 1341.46 | 1341.86 | 1342.11 | 1342.38 | 1346.03 | 1345.17 |
| Pipe C.4 | 70 | 0.22 | 0.22 | 0.98 | 0.22 | 0.22 | 15 | 15 | 4.8 | 1.04 | 0 | 1.04 | 6.4 | 2 | 18 | 0.37 | 1341.96 | 1342.22 | 1342.58 | 1342.65 | 1345.17 | 1345.81 |
| Pipe B.1 | 23 | 0.13 | 0.13 | 0.98 | 0.13 | 0.13 | 15 | 15 | 4.8 | 0.61 | 0 | 0.61 | 10.62 | 1.47 | 18 | 1.02 | 1341.5 | 1341.73 | 1342.75 | 1342.02 | 1343.71 | 1346.08 |
| 25-YEAR | | | | | | | | | | | | | | | | | | | | | | |
| Pipe A.1 | 111 | 0.5 | 1.1 | 0.98 | 0.49 | 1.08 | 15 | 15.9 | 5.5 | 5.9 | 0 | 5.9 | 5.73 | 4.15 | 18 | 0.3 | 1342.15 | 1342.48 | 1343.19 | 1343.71 | 1344.36 | 1346.29 |
| Pipe A.2 | 106 | 0.6 | 0.6 | 0.98 | 0.59 | 0.59 | 15 | 15 | 5.6 | 3.32 | 0 | 3.32 | 5.78 | 2.17 | 18 | 0.3 | 1342.48 | 1342.8 | 1343.83 | 1343.91 | 1346.29 | 1346.05 |
| Pipe C.1 | 117 | 0.1 | 0.55 | 0.98 | 0.1 | 0.54 | 15 | 20.1 | 4.8 | 2.61 | 0 | 2.61 | 5.82 | 2.65 | 18 | 0.31 | 1340.75 | 1341.11 | 1341.68 | 1341.85 | 1342.96 | 1346.19 |
| Pipe C.2 | 117 | 0.09 | 0.45 | 0.98 | 0.09 | 0.44 | 15 | 18.7 | 5 | 2.22 | 0 | 2.22 | 5.73 | 2.66 | 18 | 0.3 | 1341.11 | 1341.46 | 1341.92 | 1342.11 | 1346.19 | 1346.03 |
| Pipe C.3 | 132 | 0.14 | 0.36 | 0.98 | 0.14 | 0.35 | 15 | 16.7 | 5.3 | 1.88 | 0 | 1.88 | 5.79 | 2.63 | 18 | 0.3 | 1341.46 | 1341.86 | 1342.18 | 1342.43 | 1346.03 | 1345.17 |
| Pipe C.4 | 70 | 0.22 | 0.22 | 0.98 | 0.22 | 0.22 | 15 | 15 | 5.6 | 1.22 | 0 | 1.22 | 6.4 | 2.01 | 18 | 0.37 | 1341.96 | 1342.22 | 1342.65 | 1342.7 | 1345.17 | 1345.81 |
| Pipe B.1 | 23 | 0.13 | 0.13 | 0.98 | 0.13 | 0.13 | 15 | 15 | 5.6 | 0.72 | 0 | 0.72 | 10.62 | 1.56 | 18 | 1.02 | 1341.5 | 1341.73 | 1342.75 | 1342.05 | 1343.71 | 1346.08 |
| 100-YEAR | | | | | | | | | | | | | | | | | | | | | | |
| Pipe A.1 | 111 | 0.5 | 1.1 | 0.98 | 0.49 | 1.08 | 15 | 15.8 | 6.6 | 7.17 | 0 | 7.17 | 5.73 | 4.77 | 18 | 0.3 | 1342.15 | 1342.48 | 1343.19 | 1344.04 | 1344.36 | 1346.29 |
| Pipe A.2 | 106 | 0.6 | 0.6 | 0.98 | 0.59 | 0.59 | 15 | 15 | 6.8 | 4.01 | 0 | 4.01 | 5.78 | 2.27 | 18 | 0.3 | 1342.48 | 1342.8 | 1344.17 | 1344.3 | 1346.29 | 1346.05 |
| Pipe C.1 | 117 | 0.1 | 0.55 | 0.98 | 0.1 | 0.54 | 15 | 19.2 | 6 | 3.25 | 0 | 3.25 | 5.82 | 3.09 | 18 | 0.31 | 1340.75 | 1341.11 | 1341.68 | 1341.92 | 1342.96 | 1346.19 |
| Pipe C.2 | 117 | 0.09 | 0.45 | 0.98 | 0.09 | 0.44 | 15 | 18 | 6.2 | 2.74 | 0 | 2.74 | 5.73 | 2.82 | 18 | 0.3 | 1341.11 | 1341.46 | 1342 | 1342.2 | 1346.19 | 1346.03 |
| Pipe C.3 | 132 | 0.14 | 0.36 | 0.98 | 0.14 | 0.35 | 15 | 16.4 | 6.5 | 2.3 | 0 | 2.3 | 5.79 | 2.72 | 18 | 0.3 | 1341.46 | 1341.86 | 1342.28 | 1342.51 | 1346.03 | 1345.17 |
| Pipe C.4 | 70 | 0.22 | 0.22 | 0.98 | 0.22 | 0.22 | 15 | 15 | 6.8 | 1.47 | 0 | 1.47 | 6.4 | 2.01 | 18 | 0.37 | 1341.96 | 1342.22 | 1342.74 | 1342.78 | 1345.17 | 1345.81 |
| Pipe B.1 | 23 | 0.13 | 0.13 | 0.98 | 0.13 | 0.13 | 15 | 15 | 6.8 | 0.87 | 0 | 0.87 | 10.62 | 1.68 | 18 | 1.02 | 1341.5 | 1341.73 | 1342.75 | 1342.08 | 1343.71 | 1346.08 |



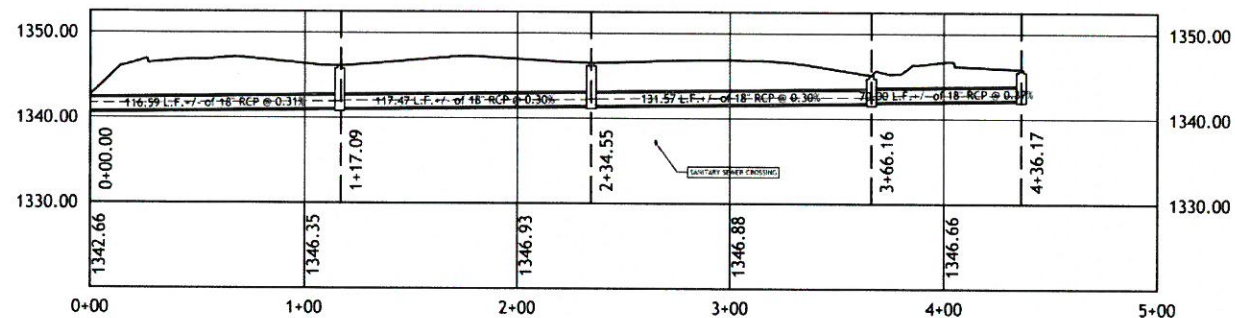
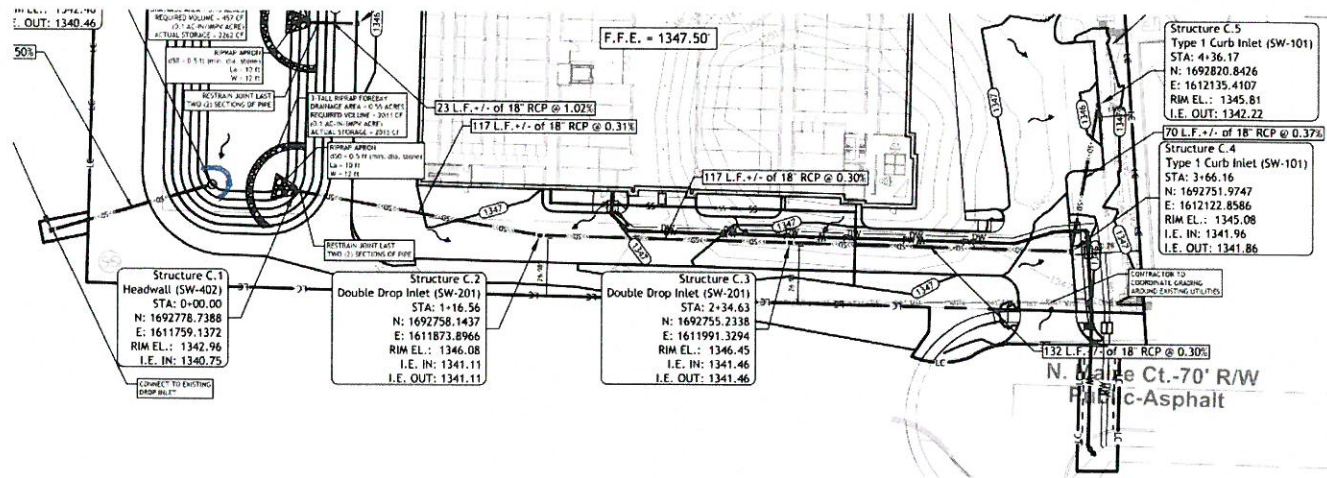
Benchmark

BM#1: City of Wichita Benchmark on North Side of Road Inlet that is approx. 80' E. and approx. 15' N. of the NW corner of Lot 2 (Noted on Abbott Land Survey Plat) Elev. = 1346.07

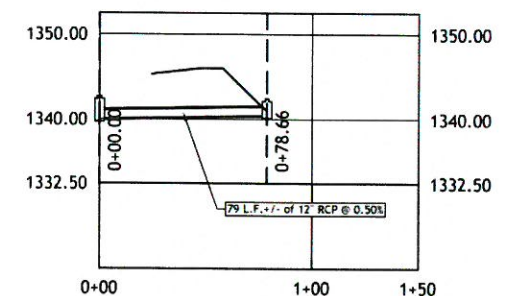
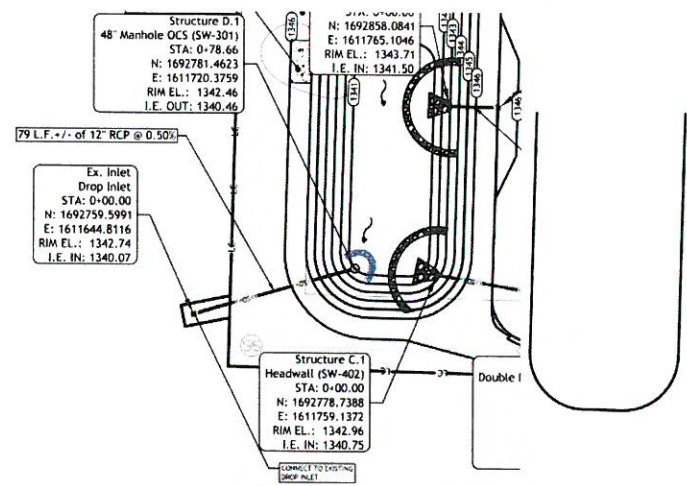
BM#2: City of Wichita Benchmark on North Corner of Storm Inlet along Road Curve approx. 45' W. of NE Property corner (Noted on Abbott Land Survey Plat) Elev. = 1345.96



| PLN | DATE | BY | REVISION |
|-----|----------|-----|-------------------|
| A | 05/08/19 | CLP | Issued for Permit |
| B | 08/05/19 | CLP | Issued for Permit |



SD LINE C
 Horizontal Scale: 1" = 40'
 Vertical Scale: 1" = 10'



SD LINE D
 Horizontal Scale: 1" = 40'
 Vertical Scale: 1" = 10'

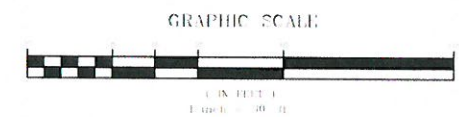
| 2-YEAR | | | | | | | | | | | | | | | | | | | | | | |
|----------|-----------------|----------------|----------------|------------------|------------|------------|-----------------|----------------|-------------------|-------------------|----------------|-----------------|-----------------|--------------|---------------|---------------|-----------------|-----------------|------------|------------|-----------------|----------------|
| Line ID | LineLength (ft) | Incr.Area (ac) | TotalArea (ac) | RunoffCoeff. (C) | Incr.C x A | TotalC x A | InletTime (min) | TimeConc (min) | RfnalInlt (in/hr) | TotalRunoff (cfs) | AdnlFlow (cfs) | TotalFlow (cfs) | CapacFull (cfs) | Veloc (ft/s) | PipeSize (in) | PipeSlope (%) | Inv ElevDn (ft) | Inv ElevUp (ft) | HGLDn (ft) | HGLUp (ft) | Grnd/RimDn (ft) | Gmd/RimUp (ft) |
| Pipe A.1 | 111 | 0.5 | 1.1 | 0.98 | 0.49 | 1.08 | 15 | 16.6 | 3.2 | 3.41 | 0 | 3.41 | 5.73 | 2.88 | 18 | 0.3 | 1342.15 | 1342.48 | 1343.19 | 1343.36 | 1344.36 | 1346.29 |
| Pipe A.2 | 106 | 0.6 | 0.6 | 0.98 | 0.59 | 0.59 | 15 | 15 | 3.3 | 1.96 | 0 | 1.96 | 5.78 | 2 | 18 | 0.3 | 1342.48 | 1342.8 | 1343.44 | 1343.52 | 1342.29 | 1346.05 |
| Pipe C.1 | 117 | 0.1 | 0.55 | 0.98 | 0.1 | 0.54 | 15 | 23.6 | 2.6 | 1.4 | 0 | 1.4 | 5.82 | 1.6 | 18 | 0.31 | 1340.75 | 1341.11 | 1341.68 | 1341.74 | 1342.96 | 1346.19 |
| Pipe C.2 | 117 | 0.09 | 0.45 | 0.98 | 0.09 | 0.44 | 15 | 21.2 | 2.8 | 1.22 | 0 | 1.22 | 5.73 | 2.1 | 18 | 0.3 | 1341.11 | 1341.46 | 1341.77 | 1341.93 | 1346.19 | 1346.03 |
| Pipe C.3 | 132 | 0.14 | 0.36 | 0.98 | 0.14 | 0.35 | 15 | 17.9 | 3 | 1.07 | 0 | 1.07 | 5.79 | 2.32 | 18 | 0.3 | 1341.46 | 1341.86 | 1341.98 | 1342.28 | 1346.03 | 1345.17 |
| Pipe C.4 | 70 | 0.22 | 0.22 | 0.98 | 0.22 | 0.22 | 15 | 15 | 3.3 | 0.72 | 0 | 0.72 | 6.4 | 1.97 | 18 | 0.37 | 1341.96 | 1342.22 | 1342.44 | 1342.55 | 1345.17 | 1345.81 |
| Pipe B.1 | 23 | 0.13 | 0.13 | 0.98 | 0.13 | 0.13 | 15 | 15 | 3.3 | 0.43 | 0 | 0.43 | 10.62 | 1.29 | 18 | 1.02 | 1341.5 | 1341.73 | 1342.75 | 1341.97 | 1343.71 | 1346.08 |

| 5-YEAR | | | | | | | | | | | | | | | | | | | | | | |
|----------|-----------------|----------------|----------------|------------------|------------|------------|-----------------|----------------|-------------------|-------------------|----------------|-----------------|-----------------|--------------|---------------|---------------|-----------------|-----------------|------------|------------|-----------------|----------------|
| Line ID | LineLength (ft) | Incr.Area (ac) | TotalArea (ac) | RunoffCoeff. (C) | Incr.C x A | TotalC x A | InletTime (min) | TimeConc (min) | RfnalInlt (in/hr) | TotalRunoff (cfs) | AdnlFlow (cfs) | TotalFlow (cfs) | CapacFull (cfs) | Veloc (ft/s) | PipeSize (in) | PipeSlope (%) | Inv ElevDn (ft) | Inv ElevUp (ft) | HGLDn (ft) | HGLUp (ft) | Grnd/RimDn (ft) | Gmd/RimUp (ft) |
| Pipe A.1 | 111 | 0.5 | 1.1 | 0.98 | 0.49 | 1.08 | 15 | 16.3 | 4 | 4.31 | 0 | 4.31 | 5.73 | 3.41 | 18 | 0.3 | 1342.15 | 1342.48 | 1343.19 | 1343.46 | 1344.36 | 1346.29 |
| Pipe A.2 | 106 | 0.6 | 0.6 | 0.98 | 0.59 | 0.59 | 15 | 15 | 4.2 | 2.45 | 0 | 2.45 | 5.78 | 2.12 | 18 | 0.3 | 1342.48 | 1342.8 | 1343.56 | 1343.64 | 1346.29 | 1346.05 |
| Pipe C.1 | 117 | 0.1 | 0.55 | 0.98 | 0.1 | 0.54 | 15 | 21.9 | 3.4 | 1.83 | 0 | 1.83 | 5.82 | 2.01 | 18 | 0.31 | 1340.75 | 1341.11 | 1341.68 | 1341.77 | 1342.96 | 1346.19 |
| Pipe C.2 | 117 | 0.09 | 0.45 | 0.98 | 0.09 | 0.44 | 15 | 20 | 3.6 | 1.58 | 0 | 1.58 | 5.73 | 2.34 | 18 | 0.3 | 1341.11 | 1341.46 | 1341.82 | 1342 | 1346.19 | 1346.03 |
| Pipe C.3 | 132 | 0.14 | 0.36 | 0.98 | 0.14 | 0.35 | 15 | 17.3 | 3.9 | 1.37 | 0 | 1.37 | 5.79 | 2.46 | 18 | 0.3 | 1341.46 | 1341.86 | 1342.06 | 1342.34 | 1346.03 | 1345.17 |
| Pipe C.4 | 70 | 0.22 | 0.22 | 0.98 | 0.22 | 0.22 | 15 | 15 | 4.2 | 0.9 | 0 | 0.9 | 6.4 | 1.98 | 18 | 0.37 | 1341.96 | 1342.22 | 1342.52 | 1342.61 | 1345.17 | 1345.81 |
| Pipe B.1 | 23 | 0.13 | 0.13 | 0.98 | 0.13 | 0.13 | 15 | 15 | 4.2 | 0.53 | 0 | 0.53 | 10.62 | 1.4 | 18 | 1.02 | 1341.5 | 1341.73 | 1342.75 | 1342 | 1343.71 | 1346.08 |

| 10-YEAR | | | | | | | | | | | | | | | | | | | | | | |
|----------|-----------------|----------------|----------------|------------------|------------|------------|-----------------|----------------|-------------------|-------------------|----------------|-----------------|-----------------|--------------|---------------|---------------|-----------------|-----------------|------------|------------|-----------------|----------------|
| Line ID | LineLength (ft) | Incr.Area (ac) | TotalArea (ac) | RunoffCoeff. (C) | Incr.C x A | TotalC x A | InletTime (min) | TimeConc (min) | RfnalInlt (in/hr) | TotalRunoff (cfs) | AdnlFlow (cfs) | TotalFlow (cfs) | CapacFull (cfs) | Veloc (ft/s) | PipeSize (in) | PipeSlope (%) | Inv ElevDn (ft) | Inv ElevUp (ft) | HGLDn (ft) | HGLUp (ft) | Grnd/RimDn (ft) | Gmd/RimUp (ft) |
| Pipe A.1 | 111 | 0.5 | 1.1 | 0.98 | 0.49 | 1.08 | 15 | 16.1 | 4.6 | 5 | 0 | 5 | 5.73 | 3.75 | 18 | 0.3 | 1342.15 | 1342.48 | 1343.19 | 1343.56 | 1344.36 | 1346.29 |
| Pipe A.2 | 106 | 0.6 | 0.6 | 0.98 | 0.59 | 0.59 | 15 | 15 | 4.8 | 2.83 | 0 | 2.83 | 5.78 | 2.15 | 18 | 0.3 | 1342.48 | 1342.8 | 1343.67 | 1343.74 | 1346.29 | 1346.05 |
| Pipe C.1 | 117 | 0.1 | 0.55 | 0.98 | 0.1 | 0.54 | 15 | 21 | 4 | 2.17 | 0 | 2.17 | 5.82 | 2.3 | 18 | 0.31 | 1340.75 | 1341.11 | 1341.68 | 1341.8 | 1342.96 | 1346.19 |
| Pipe C.2 | 117 | 0.09 | 0.45 | 0.98 | 0.09 | 0.44 | 15 | 19.3 | 4.2 | 1.86 | 0 | 1.86 | 5.73 | 2.5 | 18 | 0.3 | 1341.11 | 1341.46 | 1341.86 | 1342.05 | 1346.19 | 1346.03 |
| Pipe C.3 | 132 | 0.14 | 0.36 | 0.98 | 0.14 | 0.35 | 15 | 17 | 4.5 | 1.59 | 0 | 1.59 | 5.79 | 2.54 | 18 | 0.3 | 1341.46 | 1341.86 | 1342.11 | 1342.38 | 1346.03 | 1345.17 |
| Pipe C.4 | 70 | 0.22 | 0.22 | 0.98 | 0.22 | 0.22 | 15 | 15 | 4.8 | 1.04 | 0 | 1.04 | 6.4 | 2 | 18 | 0.37 | 1341.96 | 1342.22 | 1342.58 | 1342.65 | 1345.17 | 1345.81 |
| Pipe B.1 | 23 | 0.13 | 0.13 | 0.98 | 0.13 | 0.13 | 15 | 15 | 4.8 | 0.61 | 0 | 0.61 | 10.62 | 1.47 | 18 | 1.02 | 1341.5 | 1341.73 | 1342.75 | 1342.02 | 1343.71 | 1346.08 |

| 25-YEAR | | | | | | | | | | | | | | | | | | | | | | |
|----------|-----------------|----------------|----------------|------------------|------------|------------|-----------------|----------------|-------------------|-------------------|----------------|-----------------|-----------------|--------------|---------------|---------------|-----------------|-----------------|------------|------------|-----------------|----------------|
| Line ID | LineLength (ft) | Incr.Area (ac) | TotalArea (ac) | RunoffCoeff. (C) | Incr.C x A | TotalC x A | InletTime (min) | TimeConc (min) | RfnalInlt (in/hr) | TotalRunoff (cfs) | AdnlFlow (cfs) | TotalFlow (cfs) | CapacFull (cfs) | Veloc (ft/s) | PipeSize (in) | PipeSlope (%) | Inv ElevDn (ft) | Inv ElevUp (ft) | HGLDn (ft) | HGLUp (ft) | Grnd/RimDn (ft) | Gmd/RimUp (ft) |
| Pipe A.1 | 111 | 0.5 | 1.1 | 0.98 | 0.49 | 1.08 | 15 | 15.9 | 5.5 | 5.9 | 0 | 5.9 | 5.73 | 4.15 | 18 | 0.3 | 1342.15 | 1342.48 | 1343.19 | 1343.71 | 1344.36 | 1346.29 |
| Pipe A.2 | 106 | 0.6 | 0.6 | 0.98 | 0.59 | 0.59 | 15 | 15 | 5.6 | 3.32 | 0 | 3.32 | 5.78 | 2.17 | 18 | 0.3 | 1342.48 | 1342.8 | 1343.83 | 1343.91 | 1346.29 | 1346.05 |
| Pipe C.1 | 117 | 0.1 | 0.55 | 0.98 | 0.1 | 0.54 | 15 | 20.1 | 4.8 | 2.61 | 0 | 2.61 | 5.82 | 2.65 | 18 | 0.31 | 1340.75 | 1341.11 | 1341.68 | 1341.85 | 1342.96 | 1346.19 |
| Pipe C.2 | 117 | 0.09 | 0.45 | 0.98 | 0.09 | 0.44 | 15 | 18.7 | 5 | 2.22 | 0 | 2.22 | 5.73 | 2.66 | 18 | 0.3 | 1341.11 | 1341.46 | 1341.92 | 1342.11 | 1346.19 | 1346.03 |
| Pipe C.3 | 132 | 0.14 | 0.36 | 0.98 | 0.14 | 0.35 | 15 | 16.7 | 5.3 | 1.88 | 0 | 1.88 | 5.79 | 2.63 | 18 | 0.3 | 1341.46 | 1341.86 | 1342.18 | 1342.43 | 1346.03 | 1345.17 |
| Pipe C.4 | 70 | 0.22 | 0.22 | 0.98 | 0.22 | 0.22 | 15 | 15 | 5.6 | 1.22 | 0 | 1.22 | 6.4 | 2.01 | 18 | 0.37 | 1341.96 | 1342.22 | 1342.65 | 1342.7 | 1345.17 | 1345.81 |
| Pipe B.1 | 23 | 0.13 | 0.13 | 0.98 | 0.13 | 0.13 | 15 | 15 | 5.6 | 0.72 | 0 | 0.72 | 10.62 | 1.56 | 18 | 1.02 | 1341.5 | 1341.73 | 1342.75 | 1342.05 | 1343.71 | 1346.08 |

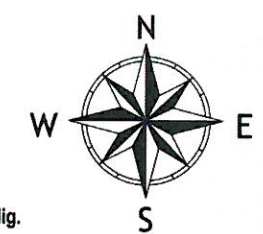
| 100-YEAR | | | | | | | | | | | | | | | | | | | | | | |
|----------|-----------------|----------------|----------------|------------------|------------|------------|-----------------|----------------|-------------------|-------------------|----------------|-----------------|-----------------|--------------|---------------|---------------|-----------------|-----------------|------------|------------|-----------------|----------------|
| Line ID | LineLength (ft) | Incr.Area (ac) | TotalArea (ac) | RunoffCoeff. (C) | Incr.C x A | TotalC x A | InletTime (min) | TimeConc (min) | RfnalInlt (in/hr) | TotalRunoff (cfs) | AdnlFlow (cfs) | TotalFlow (cfs) | CapacFull (cfs) | Veloc (ft/s) | PipeSize (in) | PipeSlope (%) | Inv ElevDn (ft) | Inv ElevUp (ft) | HGLDn (ft) | HGLUp (ft) | Grnd/RimDn (ft) | Gmd/RimUp (ft) |
| Pipe A.1 | 111 | 0.5 | 1.1 | 0.98 | 0.49 | 1.08 | 15 | 15.8 | 6.6 | 7.17 | 0 | 7.17 | 5.73 | 4.77 | 18 | 0.3 | 1342.15 | 1342.48 | 1343.19 | 1344.04 | 1344.36 | 1346.29 |
| Pipe A.2 | 106 | 0.6 | 0.6 | 0.98 | 0.59 | 0.59 | 15 | 15 | 6.8 | 4.01 | 0 | 4.01 | 5.78 | 2.27 | 18 | 0.3 | 1342.48 | 1342.8 | 1344.17 | 1344.3 | 1346.29 | 1346.05 |
| Pipe C.1 | 117 | 0.1 | 0.55 | 0.98 | 0.1 | 0.54 | 15 | 19.2 | 6 | 3.25 | 0 | 3.25 | 5.82 | 3.09 | 18 | 0.31 | 1340.75 | 1341.11 | 1341.68 | 1341.92 | 1342.96 | 1346.19 |
| Pipe C.2 | 117 | 0.09 | 0.45 | 0.98 | 0.09 | 0.44 | 15 | 18 | 6.2 | 2.74 | 0 | 2.74 | 5.73 | 2.82 | 18 | 0.3 | 1341.11 | 1341.46 | 1342 | 1342.2 | 1346.19 | 1346.03 |
| Pipe C.3 | 132 | 0.14 | 0.36 | 0.98 | 0.14 | 0.35 | 15 | 16.4 | 6.5 | 2.3 | 0 | 2.3 | 5.79 | 2.72 | 18 | 0.3 | 1341.46 | 1341.86 | 1342.28 | 1342.51 | 1346.03 | 1345.17 |
| Pipe C.4 | 70 | 0.22 | 0.22 | 0.98 | 0.22 | 0.22 | 15 | 15 | 6.8 | 1.47 | 0 | 1.47 | 6.4 | 2.01 | 18 | 0.37 | 1341.96 | 1342.22 | 1342.74 | 1342.78 | 1345.17 | 1345.81 |
| Pipe B.1 | 23 | 0.13 | 0.13 | 0.98 | 0.13 | 0.13 | 15 | 15 | 6.8 | 0.87 | 0 | 0.87 | 10.62 | 1.68 | 18 | 1.02 | 1341.5 | 1341.73 | 1342.75 | 1342.08 | 1343.71 | 1346.08 |



Benchmark

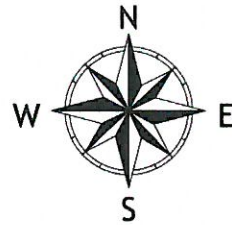
BM#1: City of Wichita Benchmark on North Side of Road Inlet that is approx. 80' E. and approx. 15' N. of the NW corner of Lot 2 (Noted on Abbott Land Survey Plat)
 Elev. = 1346.07

BM#2: City of Wichita Benchmark on North Corner of Storm Inlet along Road Curve approx. 45' W. of NE Property corner (Noted on Abbott Land Survey Plat)
 Elev. = 1345.96

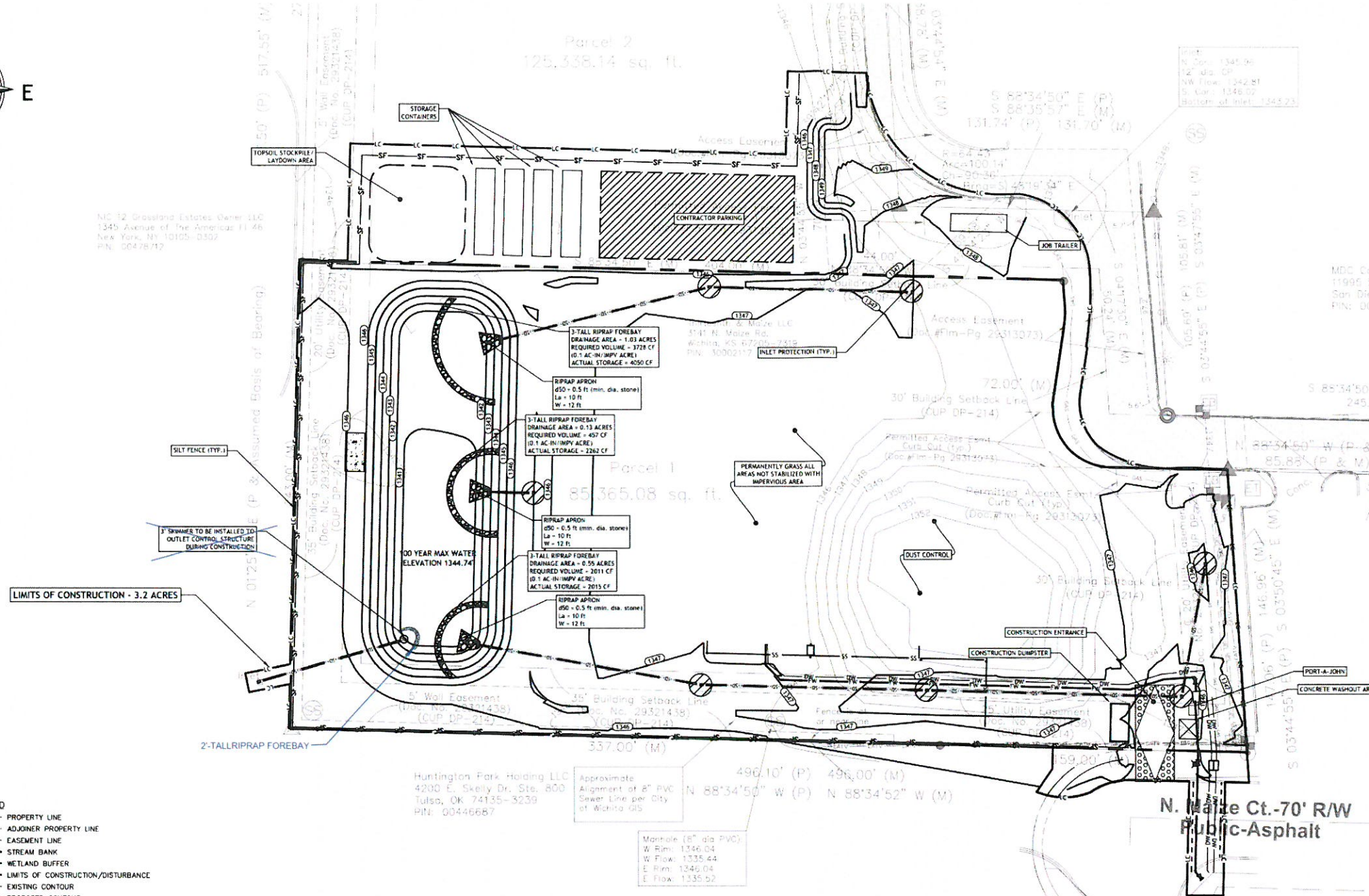


| REV | DATE | BY | COMMENT |
|-----|----------|----|-------------------|
| A | 05/05/19 | AS | Issued for Permit |
| B | 08/23/19 | AS | Issued for Permit |

SD Line C and SD Line D



MC 12 Grassland Estates Owner LLC
1345 Avenue of the Americas 11 46
New York, NY 10105-0302
PIN: 00478172



HAZARDOUS MATERIALS NOTE:

A. THE CONTRACTOR MUST PREVENT OR MINIMIZE THE DISCHARGE OF HAZARDOUS SUBSTANCES OR OIL IN STORM WATER DISCHARGES FROM THE CONSTRUCTION SITE IN ACCORDANCE WITH THE SWPPP. THE GENERAL PERMIT FOR CONSTRUCTION ACTIVITIES DOES NOT RELIEVE THE CONTRACTOR OF THE FEDERAL REPORTING REQUIREMENTS OF 40 CFR PART 110, 40 CFR PART 117 AND 40 CFR PART 302 RELATING TO SPILLS OR OTHER RELEASES OF OILS OR HAZARDOUS SUBSTANCES.

B. WHERE A RELEASE CONTAINING A HAZARDOUS SUBSTANCE OR OIL IN AN AMOUNT EQUAL TO OR IN EXCESS OF A REPORTABLE QUANTITY ESTABLISHED UNDER EITHER 40 CFR PART 110, 40 CFR PART 117 OR 40 CFR PART 302, OCCURS DURING A 24-HOUR PERIOD:

1. THE CONTRACTOR MUST NOTIFY THE OKLAHOMA DEQ EMERGENCY RESPONSE SECTION AT 1-800-522-0206 AND THE NATIONAL RESPONSE CENTER (NRC) (800) 424-8802 IN ACCORDANCE WITH THE REQUIREMENTS OF 40 CFR PART 110, 40 CFR PART 117 AND 40 CFR PART 302 AS SOON AS SITE STAFF HAVE KNOWLEDGE OF THE DISCHARGE; AND
2. THE CONTRACTOR MUST MODIFY THE SWPPP AS REQUIRED UNDER WITHIN 14 CALENDAR DAYS OF KNOWLEDGE OF THE RELEASE TO: PROVIDE A DESCRIPTION OF THE RELEASE, THE CIRCUMSTANCES LEADING TO THE RELEASE, AND THE DATE OF THE RELEASE. IN ADDITION, THE CONTRACTOR MUST REVIEW THE SWPPP TO IDENTIFY MEASURES TO PREVENT THE REOCCURRENCE OF SUCH RELEASES AND TO RESPOND TO SUCH RELEASES, AND YOU MUST MODIFY THE SWPPP WHERE APPROPRIATE.

GENERAL EROSION CONTROL NOTE:

ALL EROSION CONTROL MEASURES SHALL BE INSTALLED AND APPROVED PRIOR ANY EQUIPMENT ENTERING SITE. BMP'S SHALL MAINTAINED PER ALL LOCAL, STATE, AND FEDERAL REGULATIONS AND STATE BMP MANUAL. THE CONTRACTOR SHALL REFERENCE THIS STORMWATER POLLUTION PREVENTION PLAN (SWPPP) FOR ALL EROSION CONTROL PROCEDURES ON SITE.

Thirteenth & Maize LLC
3141 N. Maize Rd.
Wichita, KS 67205-7319
PIN: 00250449

- LEGEND**
- PROPERTY LINE
 - ADJACENT PROPERTY LINE
 - EASEMENT LINE
 - STREAM BANK
 - WETLAND BUFFER
 - LIMITS OF CONSTRUCTION/DISTURBANCE
 - EXISTING CONTOUR
 - PROPOSED CONTOUR
 - WATER MANHOLE
 - DRAINAGE MANHOLE (EXISTING)
 - DRAINAGE MANHOLE (PROPOSED)
 - CATCH BASIN (EXISTING)
 - CATCH BASIN (PROPOSED)
 - HEADWALL (PROPOSED)
 - STORM DRAINAGE PIPE (EXISTING)
 - STORM DRAINAGE PIPE (PROPOSED)
 - SANITARY SEWER LINE (EXISTING)
 - SANITARY SEWER LINE (PROPOSED)
 - SANITARY SEWER MANHOLE
 - WATER LINE
 - GAS LINE
 - UNDERGROUND TELEPHONE
 - OVERHEAD ELECTRIC
 - WATER METER
 - WATER VALVE
 - HYDRANT
 - LIGHT POLE
 - UTILITY POLE
 - TRAFFIC SIGNAL POLE
 - SIGN
 - TELEPHONE PEDESTAL
 - TRAFFIC SIGNAL BOX
 - IRON PIN-REBAR FOUND

EROSION CONTROL LEGEND

- CATCH-BASIN
- STORM DRAINAGE
- PROPOSED GRADE LINE
- SLOPE MATTING
- SILT FENCE
- INLET PROTECTION
- LIMITS OF CONSTRUCTION
- CONSTRUCTION ENTRANCE

DISTURBANCE NOTE:
STABILIZATION MEASURES SHALL BE INITIATED AS SOON AS PRACTICAL IN PORTIONS OF THE SITE WHERE CONSTRUCTION ACTIVITIES HAVE TEMPORARILY OR PERMANENTLY CEASED, BUT IN NO CASE MORE THAN FOURTEEN (14) DAYS AFTER WORK HAS CEASED.

SLOPE PROTECTION NOTE:
THE CONTRACTOR SHALL PROVIDE JUTE MATTING OR APPROVED EQUIVALENT ON ALL SLOPES 3:1 OR GREATER.

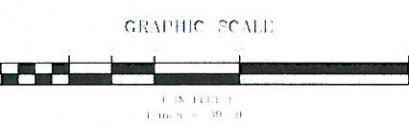
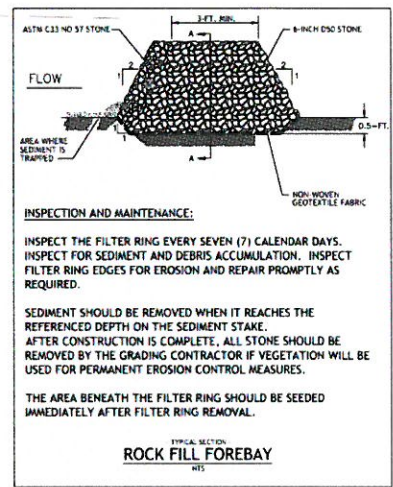
CONSTRUCTION TRAFFIC NOTE:
CONSTRUCTION TRAFFIC WILL BE USING STONE CONSTRUCTION ENTRANCES AND SHALL INSURE THAT THEY ARE NOT TRACKING SEDIMENT OFF-SITE. CONTRACTOR SHALL MONITOR AND CLEAN THE ROADWAY IF REQUIRED.

MAINTENANCE STATEMENT:
EROSION CONTROL MEASURES WILL BE MAINTAINED AT ALL TIMES. IF FULL IMPLEMENTATION OF THE APPROVED PLAN DOES NOT PROVIDE FOR EFFECTIVE EROSION CONTROL, ADDITIONAL EROSION CONTROL AND SEDIMENT CONTROL MEASURES SHALL BE IMPLEMENTED TO CONTROL OR TREAT THE SEDIMENT SOURCE.

DUST CONTROL:
THE CONTRACTOR SHALL USE ALL REASONABLE MEANS (e.g. WATER TRUCK, TARPS, MULCH, GRASSING, ETC.) NECESSARY TO REDUCE DUST DURING DEMOLITION AND CONSTRUCTION.

NOTE: SITE IS ABOVE 100-YEAR FLOOD ELEVATION

| Dry Pond Volume | | | | | |
|-----------------------|------------------------|------------------------------|------------------------------|-----------------------------|-----------------------|
| Area Draining To Pond | | | | 3.86 | |
| Stage (FT) | Contour Elevation (FT) | Contour Surface Area (ACRES) | Contour Surface Area (SQ.FT) | Incremental Storage (CU.FT) | Total Storage (CU.FT) |
| 0 | 1340.50 | 0.0003 | 13.0000 | 0 | 0 |
| 0.5 | 1341.00 | 0.0947 | 4126.0000 | 1,035 | 1,035 |
| 1.5 | 1342.00 | 0.1835 | 7993.0000 | 6,060 | 7,094 |
| 2.5 | 1343.00 | 0.2236 | 9738.0000 | 8,866 | 15,960 |
| 3.5 | 1344.00 | 0.2659 | 11584.0000 | 10,661 | 26,621 |
| 4.5 | 1345.00 | 0.3106 | 13530.0000 | 12,557 | 39,178 |
| 5.5 | 1346.00 | 0.0362 | 1576.0000 | 7,553 | 46,731 |



Project Number: 2018-125
Drawing Number: 2018-125 PPD.dwg
Drawing Scale: as noted
Date of Project: 01/2019
Engineer of Record:
Christopher L. Price, P.E.
License No. 2446

bluewater
civil design
bluewater civil design, llc
718 Lowndes Hill Road • Greenville, SC 29607
www.bluewatercivil.com • info@bluewatercivil.com

Owner:
CAP Storage Pool 1, LLC
935 S. Main St. Ste 707
Greenville, SC 29601

CAP MAIZE
INDOOR STORAGE FACILITY
N. Maize Ct. & Maize Rd N
Wichita, Kansas



| REV. | DATE | BY | DESCRIPTION |
|------|----------|-----|-------------------|
| A | 05/19/19 | CLP | Issued for Permit |
| B | 08/13/19 | CLP | Issued for Permit |

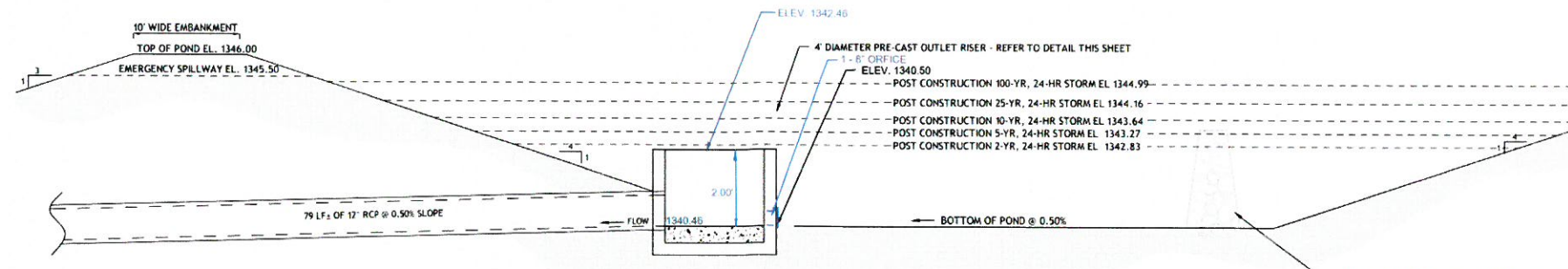
Erosion Control Plan



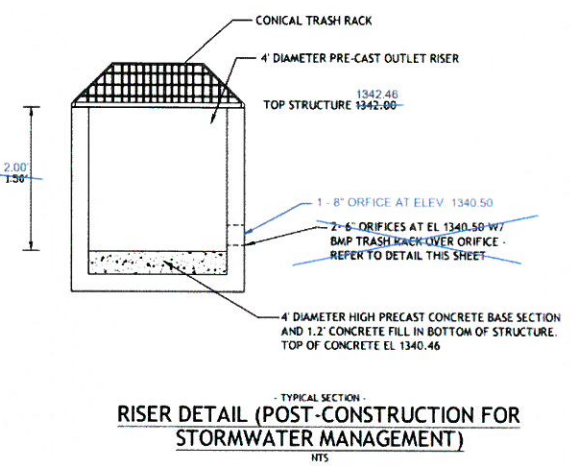
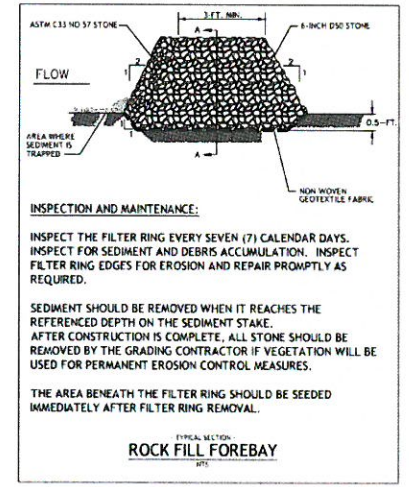
Metropolitan Area Building Construction Department

CONDITIONAL FIELD COPY

Not reviewed for Sign Code Compliance. Sign contractor must obtain separate approval and permit.

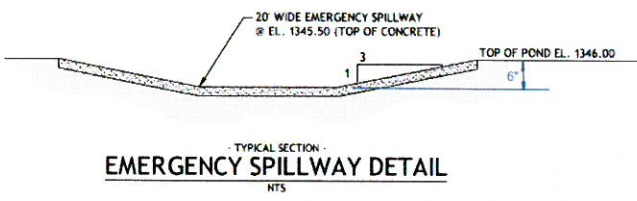


TYPICAL SECTION -
PERMANENT DRY DETENTION POND
NTS



Dry Pond Volume

| Area Draining To Pond | | | 3.86 | | |
|-----------------------|------------------------|------------------------------|------------------------------|-----------------------------|-----------------------|
| Stage (FT) | Contour Elevation (FT) | Contour Surface Area (ACRES) | Contour Surface Area (SQ.FT) | Incremental Storage (CU.FT) | Total Storage (CU.FT) |
| 0 | 1340.50 | 0.0003 | 13.0000 | 0 | 0 |
| 0.5 | 1341.00 | 0.0947 | 4126.0000 | 1,035 | 1,035 |
| 1.5 | 1342.00 | 0.1835 | 7993.0000 | 6,060 | 7,094 |
| 2.5 | 1343.00 | 0.2236 | 9738.0000 | 8,866 | 15,960 |
| 3.5 | 1344.00 | 0.2659 | 11584.0000 | 10,661 | 26,621 |
| 4.5 | 1345.00 | 0.3106 | 13530.0000 | 12,557 | 39,178 |
| 5.5 | 1346.00 | 0.0362 | 1576.0000 | 7,553 | 46,731 |



PERMANENT DETENTION POND INSPECTION ITEMS & MAINTENANCE SCHEDULE

I. INSPECTION FREQUENCY

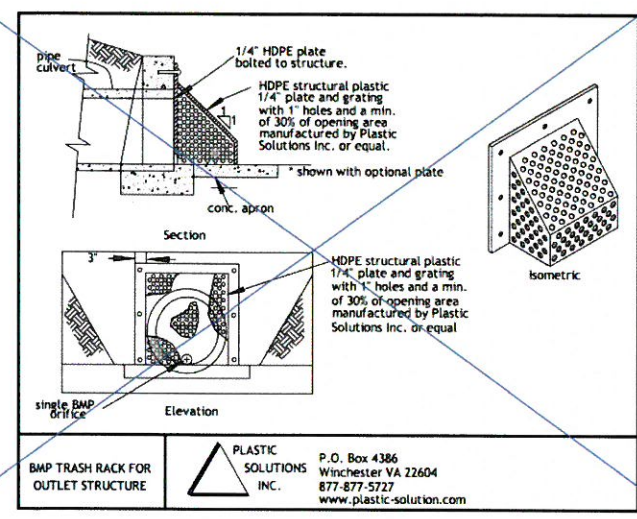
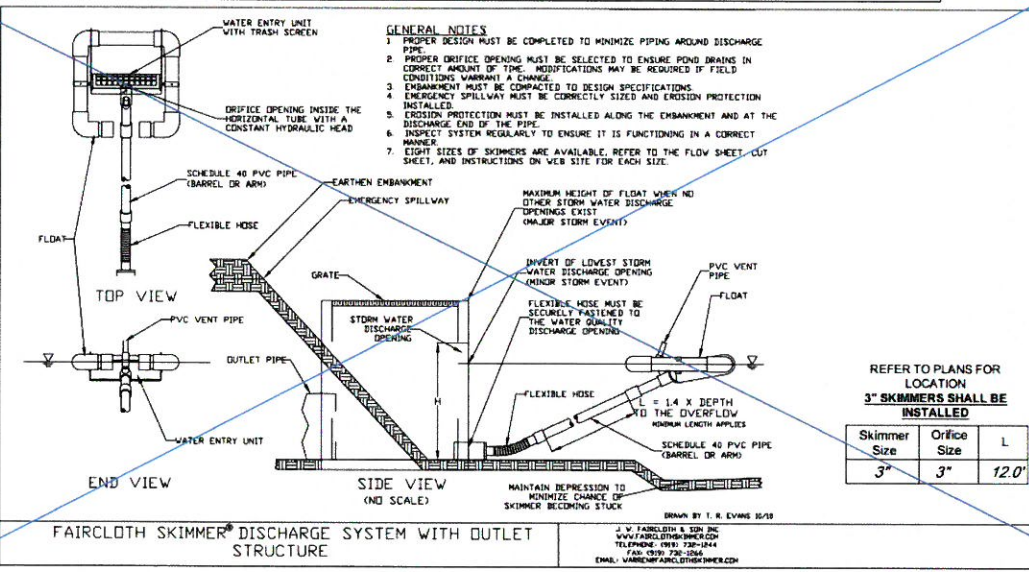
- ALL ITEMS LISTED BELOW SHALL BE INSPECTED BY OWNER AND/OR LICENSED ENGINEER IN THE STATE OF KANSAS NO LESS THAN (2) TIMES PER YEAR.

II. INSPECTION ITEMS (GENERAL)

- PIPE OUTFALLS INTO THE POND SHALL BE KEPT CLEAN AND FREE FROM OBSTRUCTIONS. PIPE OUTFALLS INTO THE POND SHALL BE KEPT IN GOOD WORKING ORDER AT ALL TIMES. REMOVE ALL LITTER, DEBRIS, AND OTHER REFUSE THAT MAY PREVENT PIPE FROM FUNCTIONING PROPERLY.
- STABILIZATION, INCLUDING SLOPES (BOTH SIDES), DIKES, BERMS, AND SURROUNDING AREAS ASSOCIATED WITH POND AS SHOWN ON THE APPROVED GRADING PLAN. OWNER SHALL CONTACT A LICENSED ENGINEER IN THE STATE OF KS IF HE/SHE WITNESSES ANY EROSION, WASHOUT, OR SCOURING PROBLEMS ASSOCIATED TO OR AS A RESULT OF THE POND. OWNER SHALL REFURBISH ANY TURF AS REQUIRED PER THE STABILIZATION SPECIFICATIONS CALLED OUT IN THE APPROVED PLANS.
- DEBRIS, LITTER, AND OR REFUSE SHALL BE REMOVED FROM THE POND AND/OR PIPE OUTFALLS INTO THE POND PERIODICALLY OR AFTER MAJOR RAINFALL EVENTS.
- SEDIMENT BUILDUP WITHIN THE POND SHALL BE INSPECTED AFTER EVERY MAJOR RAINFALL EVENT. ANY SEDIMENT ACCUMULATION SHALL BE REMOVED AND DISPOSED OF IN A LEGAL MANNER. ANY DISTURBANCE CREATED AS A RESULT OF SEDIMENT REMOVAL SHALL BE STABILIZED PER THE GRASSING SPECIFICATIONS CALLED OUT IN THE APPROVED PLANS.
- RIP-RAP INSIDE AND OUTSIDE THE POND SHALL BE INSPECTED PERIODICALLY TO ENSURE THERE IS NO ACCUMULATION OF SEDIMENT OR DEBRIS. CONTRACTOR TO REMOVE ANY DEBRIS OR SEDIMENT ACCUMULATION AND DISPOSE OF IN A LEGAL MANNER.
- POND SHALL BE MOWED & ANY TREES/BRUSH REMOVED AT LEAST TWICE A YEAR.

III. INSPECTION ITEMS (OUTLET RISER / EMERGENCY SPILLWAY / DISCHARGE POINTS)

- EMERGENCY SPILLWAY / OUTLET RISER / DISCHARGE PIPE SHALL BE INSPECTED PERIODICALLY. OWNER SHALL INSPECT THE SPILLWAY TO ENSURE THERE ARE NO EROSION PROBLEMS IN OR AROUND THE SPILLWAY DEVICES. OWNER SHALL ALSO ENSURE THAT THERE IS NO DEBRIS CAUSING THE SPILLWAY TO FUNCTION IMPROPERLY.
- OWNER SHALL INSPECT POND OUTFALLS PERIODICALLY TO ENSURE THERE ARE NO EROSION PROBLEMS DOWNSTREAM OF ANY OF THE POND SPILLWAY OUTFALLS.

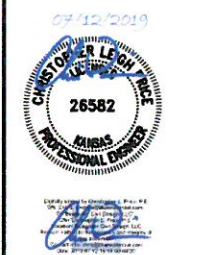


Project Number: 2018-125
DWG Name: 2018-125 Details.dwg
Drawing Title: as noted
Date of Project: 01/2019
Engineer of Record:
Christopher L. Price, P.E.
Kansas PE 2552

bluewater
civil design
Bluewater Civil Design, LLC
718 Lowndes Hill Road • Greenville, SC 29607
www.bluewatercivil.com • info@bluewatercivil.com

Owner:
CAP Storage Pool 1, LLC
935 S. Main St. Ste 202
Greenville, SC 29601

CAP MAIZE
INDOOR STORAGE FACILITY
N. Maize Ct. & Maize Rd N
Wichita, Kansas



| Rev | Date | Issue |
|-----|----------|-------------------|
| A | 02/11/19 | Issued for Permit |
| B | 02/19/19 | Issued for Bid |
| C | 03/28/19 | Issued for Permit |
| D | 06/18/19 | Issued for Permit |
| E | 07/03/19 | Issued for Permit |

STANDARD NOTES & DETAILS

C503