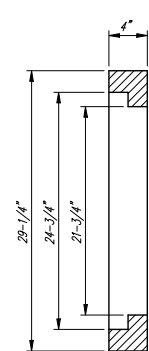
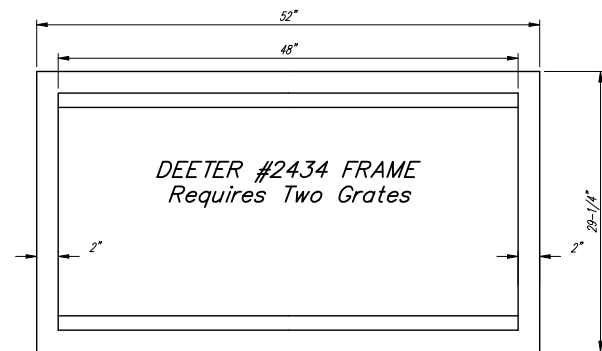


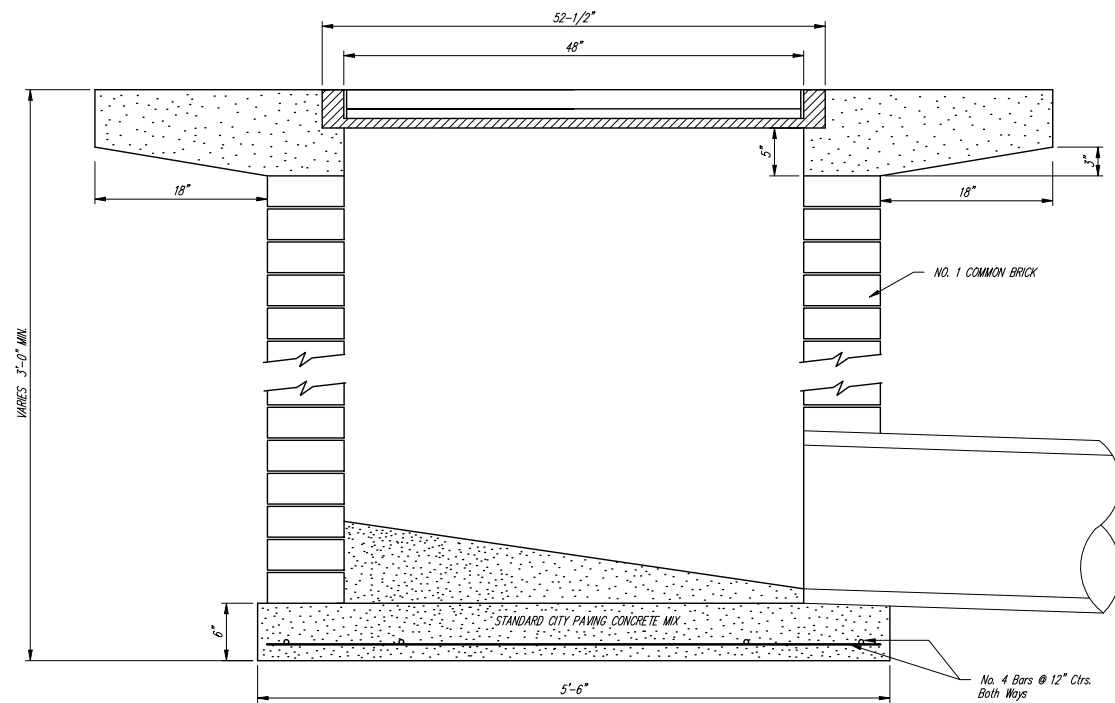
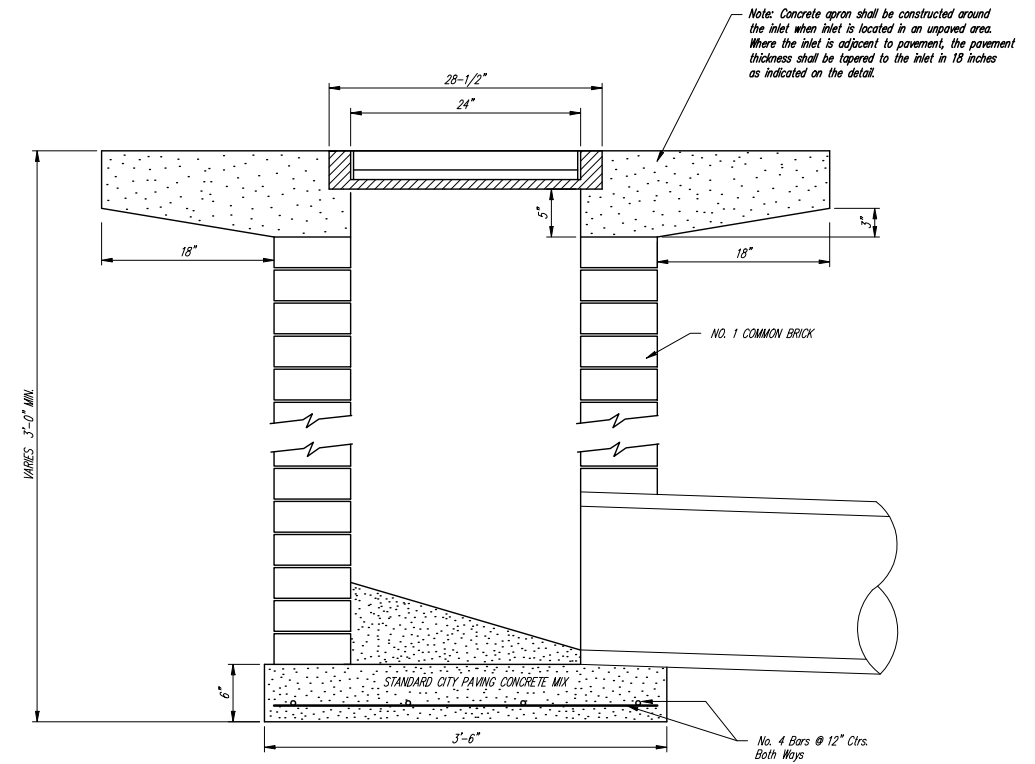
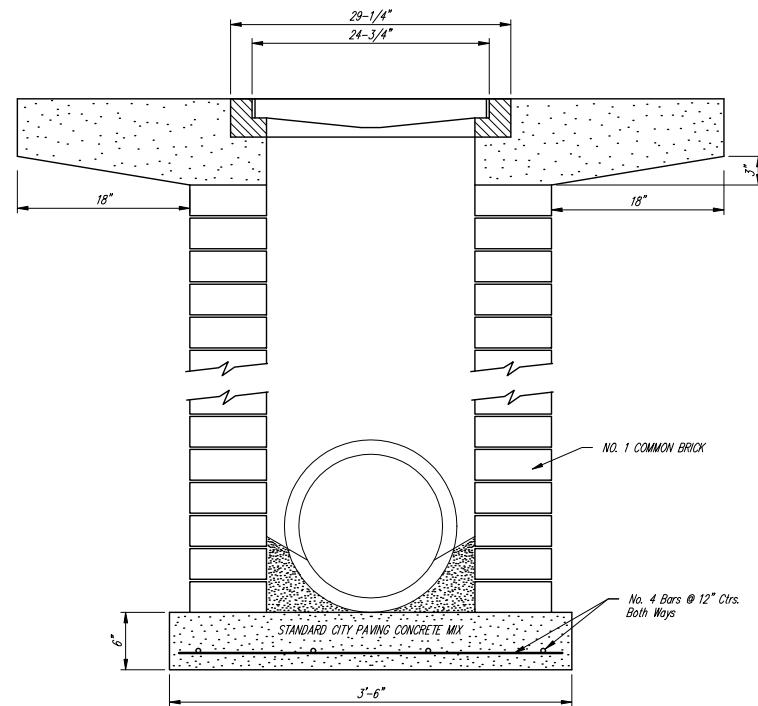
NOTE: Grates shall be imprinted on the top surface with "CITY OF WICHITA" using letters at least 1" in height. Other marking methods may be approved by the engineer.

DEETER #2433 GRATE

24" x 24" Frame and Grate Detail



Double 24" x 24" Frame Detail



		City of Wichita Standard	
		Drop Inlet Detail	
Baughman Company, P.A. 315 8th St. Wichita, KS 67211 P 316-262-7271 F 316-262-0149			
ENGINEERING SURVEYING PLANNING LANDSCAPE ARCHITECTURE			
PROJECT NUMBER 472-63868	DESIGN C.O.W.	DRAWN Staff	
REVISIONS	APPROVED	DATE 5-4-07	
	SCALE None	SHEET	
			27 OF 39
F:\Eng\Detail\Sewer\DROPINT2.dwg			06-01-E479