

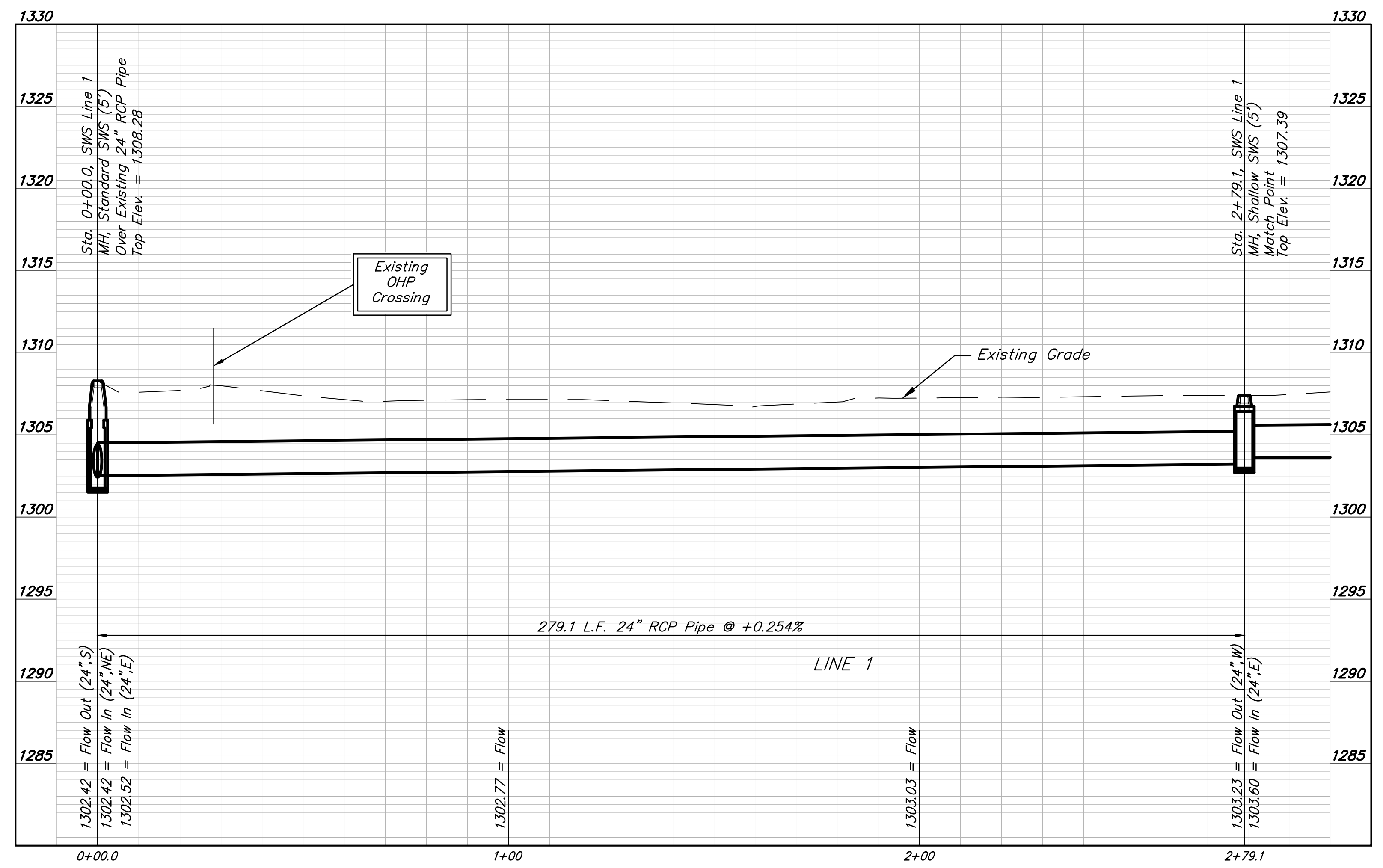
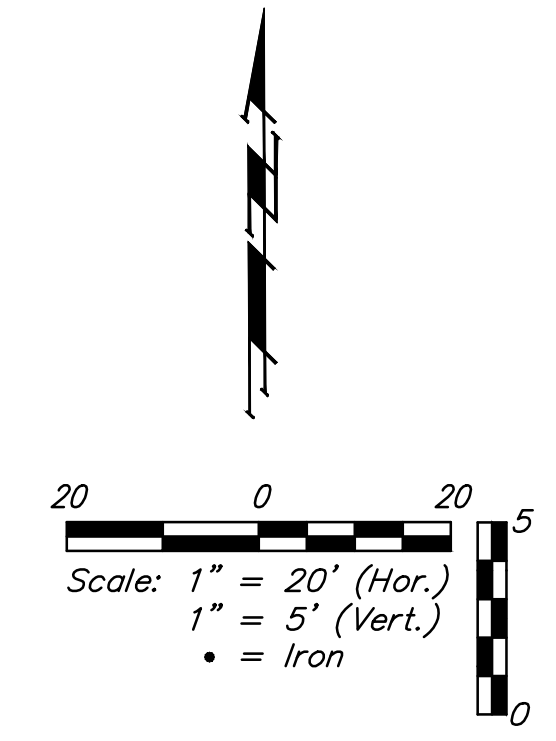
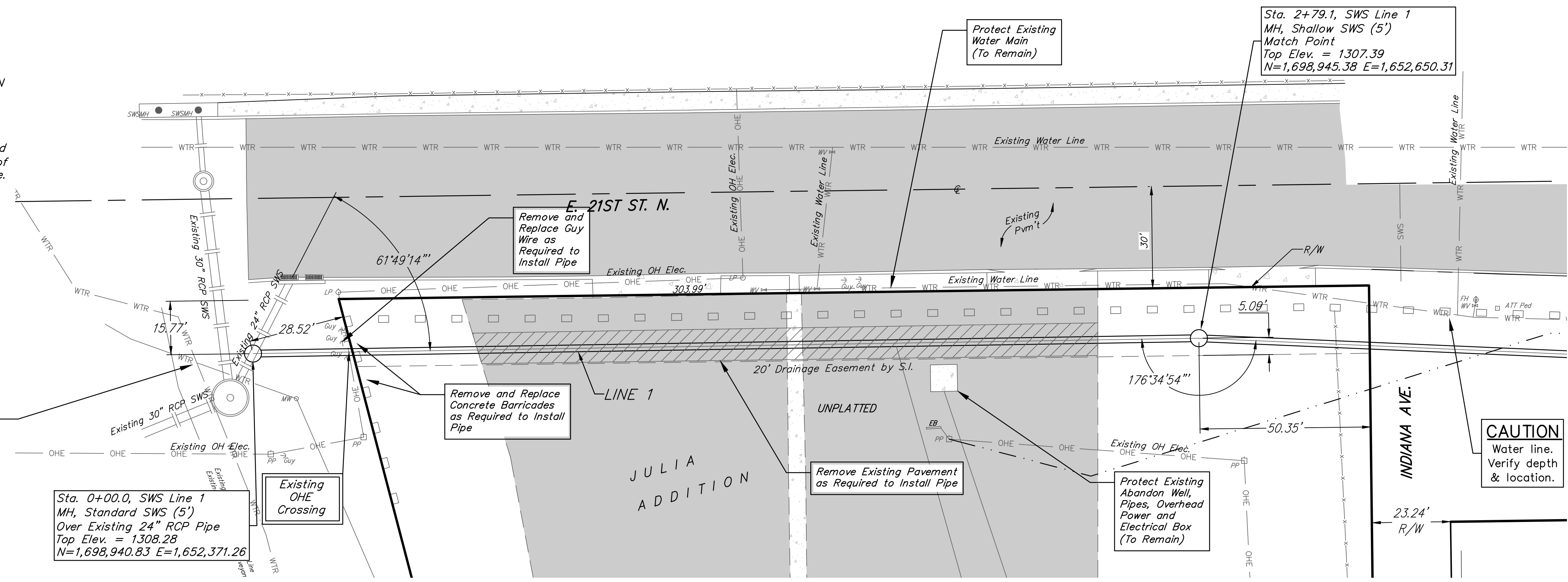
BENCHMARK:
 BM #1: Chiseled square on top of south curb of 21st Street N 334'± west and 32'± south of the intersection of 21st Street N and Cleveland Ave.
 Elev. = 1307.56 NAVD88

BM #2: Chiseled square on top of monitoring well 26'± east and 51'± south of the intersection of 21st Street N and Cleveland Ave.
 Elev. = 1308.70 NAVD88

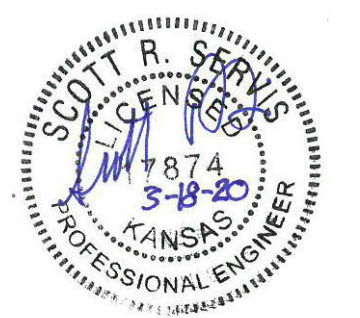
Approximate Location of Existing Groundwater Line and Existing Product Conveyance Line (To Remain). Contractor Shall Field Locate Locations Prior to Construction and Report any Discrepancies to Engineer

Sta. 0+00.0, SWS Line 1 MH, Standard SWS (5') Over Existing 24" RCP Pipe
 Top Elev. = 1308.28
 N=1,698,940.83 E=1,652,371.26

Sta. 2+79.1, SWS Line 1 MH, Shallow SWS (5') Match Point
 Top Elev. = 1307.39
 N=1,698,945.38 E=1,652,650.31



SWS LINE 1



HARVEYS WALNUT GROVE AND JULIA ADDITION
SWS LINE 1
 Stormwater Sewer Improvements

Baughman Company, P.A.
 ENGINEERING, ARCHITECTURE, PLANNING, LANDSCAPE ARCHITECTURE
 1100 S. W. 10th St., Suite 100, Topeka, KS 66606
 Phone: 785.326.1100 Fax: 785.326.1101
 www.baughmanpa.com