

N 1689700.33 E 1656336.79
 STA. 0+00.00, WL3 =
 STA. 6+08.70 ASH, 19.00' LT
 1 - FIRE HYDRANT ASS'Y
 1 - 8" MJ PLUG (S)
 L = 4'
 BURY LINE ELEV. 1301.23
 VALVE BOX ELEV. 1301.25

N 1689741.46 E 1656336.35
 STA. 0+41.13, WL3 =
 STA. 6+49.83 ASH, 19.00' LT
 DEFLECT PIPE 2° LEFT

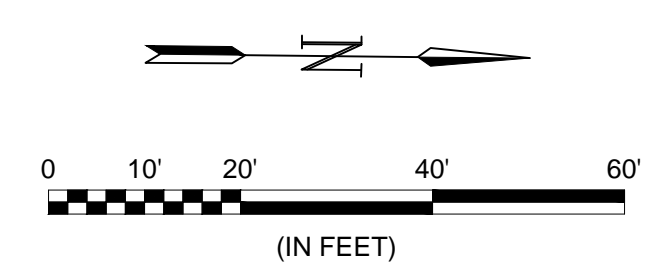
N 1689800.76 E 1656333.65
 STA. 1+00.50, WL3 =
 STA. 7+09.16 ASH, 21.06' LT
 DEFLECT PIPE 2° RIGHT

REMOVE & REPLACE WHEELCHAIR
 RAMP AND 32 SF 4" CONCRETE
 SIDEWALK TO NEAREST JOINT

REMOVE EXISTING VALVE. CUT,
 CAP AND ABANDON PIPE SOUTH,
 EAST & WEST. REMOVE & REPLACE
 CURB AND DRIVE AS NECESSARY.

NOTE: Contractor shall install a
 temporary blowoff at Sta. 0+00 to
 allow the loading and testing of Line
 3. The Fire Hydrant Assembly and
 blocking shall be installed after the
 existing 2" water main is abandoned.

INSTALL BMP, INLET
 PROTECTION ON INLET



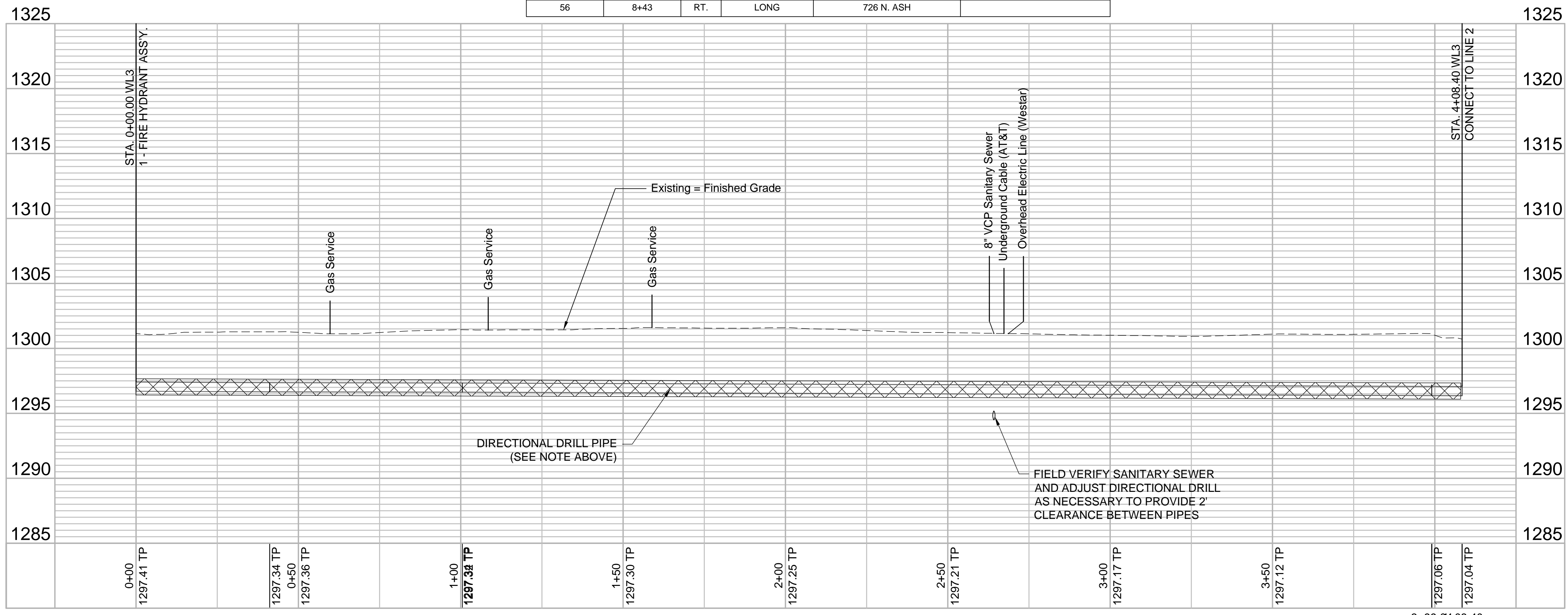
SIDEWALK & WHEELCHAIR RAMP
 REMOVE & REPLACE

WATER SERVICE SUMMARY

METER #	BL STATION	LT./RT.	SERVICE (LONG OR SHORT)	ADDRESS	AS BUILT
46	6+18	LT.	SHORT	701 N. ASH	
47	6+24	RT.	LONG	704 N. ASH	
48	6+57	RT.	LONG	706 N. ASH	
49	6+93	RT.	LONG	708 N. ASH	
50	6+94	LT.	SHORT	707 N. ASH	
51	7+43	LT.	SHORT	715 N. ASH	
52	7+45	RT.	LONG	714 N. ASH	
53	7+92	LT.	SHORT	721 N. ASH	
54	7+94	RT.	LONG	720 N. ASH	
55	8+24	LT.	SHORT	727 N. ASH	
56	8+43	RT.	LONG	726 N. ASH	

NOTES:

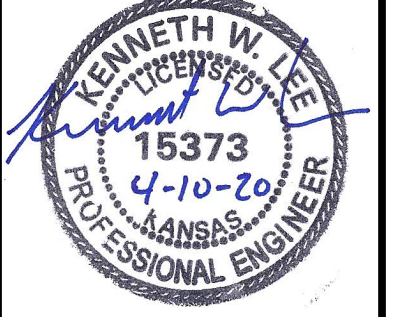
- Contractor to protect existing trees.
- Where proposed water line crosses existing water line and other utilities, contractor to pothole crossings to ensure no conflicts prior to construction. Contractor to ensure 3.5' bury depth is maintained on all new water lines.
- Removal & Replacement of Concrete Sidewalk, Pavement or Driveways shall be incidental to the Bid Items for 8" Pipe.
- Quantities for removal of concrete items are For Information Only.
- Westar will support pole at 1+85 at contractor's request.



3+99.04 08.40



© 2018 GARVER, LLC
 THIS DOCUMENT, ALONG WITH THE
 IDEAS AND DESIGNS CONVEYED
 HEREIN, SHALL BE CONSIDERED
 INSTRUMENTS OF PROFESSIONAL
 SERVICE AND ARE PROPERTY OF
 GARVER, LLC. ANY USE,
 REPRODUCTION, OR DISTRIBUTION
 OF THIS DOCUMENT, ALONG WITH
 THE IDEAS AND DESIGN CONTAINED
 HEREIN, IS PROHIBITED UNLESS
 AUTHORIZED IN WRITING BY
 GARVER, LLC OR EXPLICITLY
 ALLOWED IN THE GOVERNING
 PROFESSIONAL SERVICES
 AGREEMENT FOR THIS WORK.



REV.	DATE	DESCRIPTION	BY



CITY OF WICHITA
 WICHITA, KANSAS
 Proj. No. 448-2019-017750
 OCA W9023
 MADISON AND
 MURDOCK WATER
 MAIN REPLACEMENT
 (GROUP B)

Line 3

JOB NO.: 18267614
 DATE: July 19
 DESIGNED BY: KWL
 DRAWN BY: KWL

BAR IS ONE INCH ON
 ORIGINAL DRAWING
 IF NOT ONE INCH ON THIS SHEET,
 ADJUST SCALES ACCORDINGLY.

DRAWING NUMBER

SHEET
 NUMBER **10** OF **13**

File: L:\2018\18267614 - Madison and Murdock Water Main Drawings\C3D\Group B Plans\Water Line 3.dwg, Last Save: 4/12/2020 6:06 PM, Last saved by: KWL/lee
 Last plotted by: Lee, Ken W., Plot Style: ----, Plot Scale: 1:2,584.9, Plot Date: 4/12/2020 6:12 PM, Plotter used: None