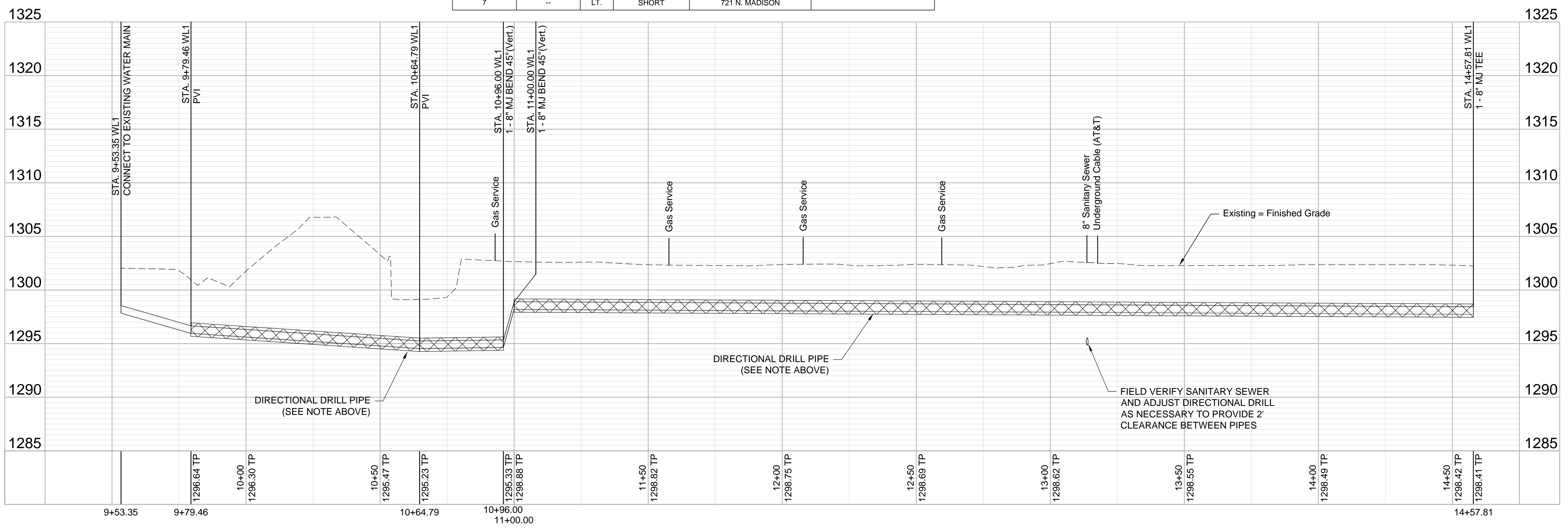
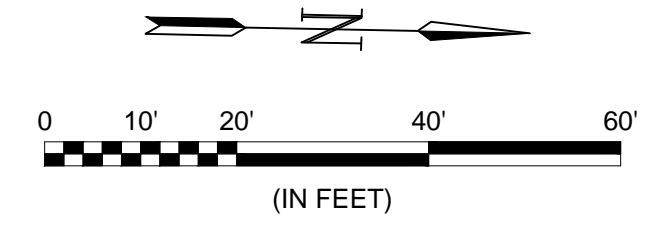


- NOTES:
- Contractor to protect existing trees.
 - Where proposed water line crosses existing water line and other utilities, contractor to pothole crossings to ensure no conflicts prior to construction. Contractor to ensure 3.5' bury depth is maintained on all new water lines.
 - Removal & Replacement of Concrete Sidewalk, Curb, Pavement or Driveways shall be incidental to the Bid Items for 8" Pipe.
 - Quantities for removal of concrete items are For Information Only.
 - Protect Fences from damage during construction.

WATER SERVICE SUMMARY					
METER #	BL STATION	LT./RT.	SERVICE (LONG OR SHORT)	ADDRESS	AS BUILT
1	11+09	LT.	SHORT	701 N. MADISON	
2	--	RT.	LONG	708 N. MADISON	
3	11+89	RT.	SHORT	711 N. MADISON	
4	12+41	RT.	LONG	714 N. MADISON	
5	12+42	LT.	SHORT	715 N. MADISON	
6	12+74	RT.	LONG	720 N. MADISON	
7	--	LT.	SHORT	721 N. MADISON	

SIDEWALK & WHEELCHAIR RAMP REMOVE & REPLACE



REV.	DATE	DESCRIPTION

CITY OF WICHITA
WICHITA, KANSAS
Proj. No. 448-2019-017750
OCA W9023

MADISON AND MURDOCK WATER MAIN REPLACEMENT (GROUP B)

Line 1

JOB NO.: 18267614
DATE: July 19
DESIGNED BY: KWL
DRAWN BY: KWL

BAR IS ONE INCH ON ORIGINAL DRAWING
IF NOT ONE INCH ON THIS SHEET, ADJUST SCALES ACCORDINGLY.

DRAWING NUMBER

SHEET NUMBER **6** OF **13**

File: L:\2018\18267614 - Madison and Murdock Water Main Drawings\C3D\Group B Plans\Water Line 1.dwg, Last Save: 4/12/2020 6:06 PM, Last saved by: KWL/lee
Last plotted by: Lee, Ken W., Plot Style: ----, Plot Scale: 1:2,584.9, Plot Date: 4/12/2020 6:12 PM, Plotter used: None