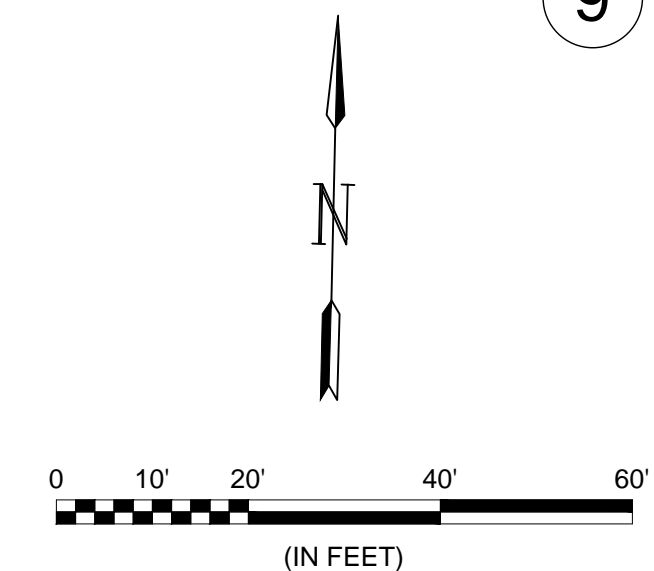
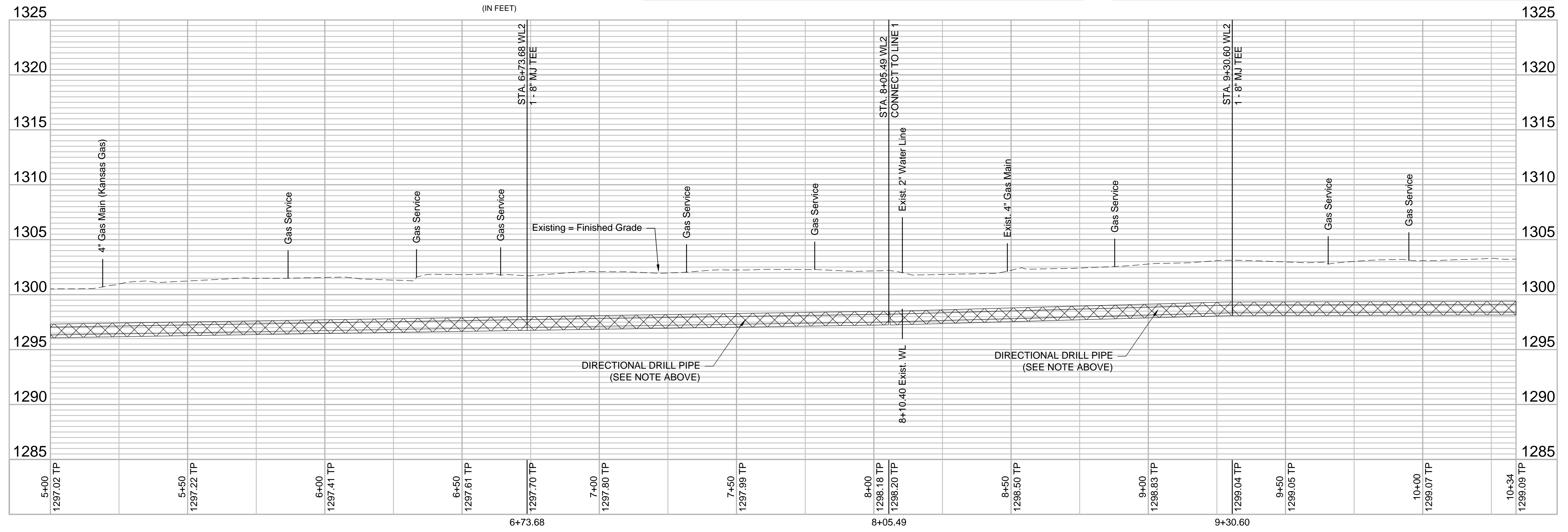


- NOTES:**
- Contractor to protect existing trees.
 - Where proposed water line crosses existing water line and other utilities, contractor to pothole crossings to ensure no conflicts prior to construction. Contractor to ensure 3.5' bury depth is maintained on all new water lines.
 - Removal & Replacement of Concrete Sidewalk, Curb, Pavement or Driveways shall be incidental to the Bid Items for 8" Pipe.
 - Quantities for removal of concrete items are For Information Only.
 - There is an abandoned Kansas Gas 3" gas main on the west side of Madison that may be encountered during construction. Contact Adam Knolla with Kansas Gas if there are questions (316-832-3123)
 - Protect existing fences from damage during construction.



METER #	BL STATION	LT./RT.	SERVICE (LONG OR SHORT)	ADDRESS	AS BUILT
19	5+50	LT.	LONG	2114 E. MURDOCK	
20	5+53	RT.	SHORT	2103 E. MURDOCK	
21	6+32	RT.	SHORT	2109 E. MURDOCK	
22	6+43	LT.	LONG	2120 E. MURDOCK	
23	6+82	RT.	SHORT	2115 E. MURDOCK	
24	7+33	RT.	SHORT	2121 E. MURDOCK	
25	7+48	LT.	LONG	2202 E. MURDOCK	

METER #	BL STATION	LT./RT.	SERVICE (LONG OR SHORT)	ADDRESS	AS BUILT
26	7+76	RT.	SHORT	2125 E. MURDOCK	
27	8+07	LT.	LONG	2210 E. MURDOCK	
28	8+83	RT.	SHORT	2203 E. MURDOCK	
29	9+04	LT.	LONG	2216 E. MURDOCK	
30	9+63	RT.	SHORT	2209 E. MURDOCK	
31	10+09	LT.	LONG	2302 E. MURDOCK	
32	10+14	RT.	SHORT	2215 E. MURDOCK	



REV.	DATE	DESCRIPTION	BY

CITY OF WICHITA
WICHITA, KANSAS
Proj. No. 448-2019-017750
OCA W9023
MADISON AND
MURDOCK WATER
MAIN REPLACEMENT
(GROUP B)

LINE 2-2

JOB NO.: 18267614
DATE: July 19
DESIGNED BY: KWL
DRAWN BY: KWL

BAR IS ONE INCH ON ORIGINAL DRAWING
IF NOT ONE INCH ON THIS SHEET, ADJUST SCALES ACCORDINGLY.

DRAWING NUMBER

SHEET NUMBER **8** OF **13**