

**GENERAL NOTES**

- THE CONTRACTOR SHALL COMPLY WITH ALL APPLICABLE SAFETY REGULATIONS, ALL CONSTRUCTION SHALL BE COMPLETED FOLLOWING CURRENT CITY STANDARD SPECIFICATIONS AND SPECIAL PROVISIONS.
- CONTRACTOR WILL BE REQUIRED TO PROVIDE NOTICE TO UTILITY COMPANIES A MINIMUM OF SEVENTY-TWO (72) HOURS PRIOR TO ANY EXCAVATION, AS FOLLOWS:

KANSAS ONE-CALL 687-2470  
 THE CONTRACTOR MUST NOTIFY THE FOLLOWING IN CASE OF AN EMERGENCY:

AT&T	1-800-246-8464
BLACK HILLS ENERGY (GAS)	1-800-694-8989
CITY OF WICHITA WATER & SEWER	1-316-219-8921
CITY OF WICHITA STORMWATER	1-316-268-4090
CITY OF WICHITA TRAFFIC	1-316-268-4034
CDX COMMUNICATIONS	1-888-249-3530
KANSAS GAS SERVICE	1-888-482-4950
WESTAR ENERGY	1-800-544-4857

- UTILITY SERVICE LINES, POLES, ETC. ARE TO BE ADJUSTED AS NECESSARY BY OTHERS PRIOR TO CONSTRUCTION UNLESS THE PLANS SPECIFICALLY CALL FOR THEIR ADJUSTMENT BY THE CONTRACTOR OR UNLESS THE PLANS SPECIFICALLY IDENTIFY A UTILITY TO BE ADJUSTED BY ITS OWNER DURING CONSTRUCTION, EXISTING UTILITIES AND THEIR LOCATION, AS SHOWN ON THE PLANS, REPRESENT THE BEST INFORMATION OBTAINABLE FOR DESIGN. THE CONTRACTOR WILL BE REQUIRED TO WORK AROUND EXISTING UTILITIES WITHIN THE RIGHT-OF-WAY WHICH DO NOT CONFLICT WITH PROPOSED CONSTRUCTION.
- RUBBLE FROM THE REMOVAL OF MISCELLANEOUS STRUCTURES AND EXCESS EXCAVATION WHICH IS TO BE WASTED SHALL BE DISPOSED OF ON SITES TO BE PROVIDED BY THE CONTRACTOR. THESE SITES SHALL BE APPROVED BY THE ENGINEER AS TO SUITABILITY, APPEARANCE AND SITE LOCATION. LOCATIONS, IN THE OPINION OF THE ENGINEER, THAT WILL LEAVE AN UNSIGHTLY APPEARANCE WILL NOT BE APPROVED. ALL DISPOSAL SITES MUST BE APPROVED BY THE KANSAS DEPARTMENT OF HEALTH AND ENVIRONMENT. MATERIAL EITHER STOCKPILED OR DISPOSED OF IN A FLOOD PLAIN WILL REQUIRE A KANSAS STATE BOARD OF AGRICULTURE PERMIT. ANY MATERIAL DUMPED IN WATERS OF THE UNITED STATES OR WETLANDS IS SUBJECT TO U.S. CORPS OF ENGINEERS PERMITTING REGULATIONS. ANY MATERIAL BURIED OR STOCKPILED BEYOND APPROVED CONSTRUCTION LIMITS WILL REQUIRE ADDITIONAL ARCHAEOLOGICAL INVESTIGATIONS UNLESS BURIED IN A PREVIOUSLY APPROVED BORROW LOCATION.
- TREES AND SHRUBS IN PUBLIC RIGHT-OF-WAY WHICH ARE IN DIRECT CONFLICT WITH PROPOSED NEW CONSTRUCTION SHALL BE REMOVED BY THE CONTRACTOR WITH THE CITY ENGINEER'S APPROVAL. TREES AND SHRUBS WHICH ARE NOT IN DIRECT CONFLICT WITH PROPOSED NEW CONSTRUCTION SHALL BE SAVED AND PROTECTED FROM DAMAGE.
- THE CONTRACTOR SHALL GIVE ALL PROPERTY OWNERS AND/OR TENANTS OF DEVELOPED PROPERTY ADJUTING THE CONSTRUCTION OF THIS PROJECT A MINIMUM OF TEN (10) DAYS NOTICE PRIOR TO START OF CONSTRUCTION.
- THE CONTRACTOR SHALL BE RESPONSIBLE FOR PRESERVING PROPERTY IRONS. THE CONTRACTOR WILL BE REQUIRED TO RE-ESTABLISH ANY PROPERTY IRONS WHICH ARE DAMAGED OR DESTROYED BY HIS CONSTRUCTION OPERATIONS. SUCH IRONS SHALL BE RE-ESTABLISHED BY A LICENSED LAND SURVEYOR IN ACCORDANCE WITH STATE LAWS.
- THE ENGINEERING DIVISION SHALL FIELD LOCATE WATER VALVES ONE TIME DURING CONSTRUCTION WHEN REQUESTED BY THE CONTRACTOR. IT SHALL BE THE CONTRACTOR'S RESPONSIBILITY TO PRESERVE SUCH FIELD LOCATIONS DURING THE CONSTRUCTION PROCESS. WATER VALVES, VALVE BOXES OR FIRE HYDRANTS DAMAGED DURING CONSTRUCTION SHALL BE REPAIRED BY CONTRACTOR AT HIS OWN EXPENSE. VALVE BOXES AND WATER METERS WITHIN THE PROJECT LIMITS SHALL BE ADJUSTED TO MATCH FIELD GRADES BY THE CONTRACTOR.
- THE CONTRACTOR SHALL NOTIFY THE INSPECTING ENGINEER AND TOM MASON AT 316-268-4574 WITH THE CITY OF WICHITA WITH THE ANTICIPATED CONSTRUCTION START DATE AND NOTIFY THEM OF PROJECT COMPLETION, STAKING AND INSPECTION FOR THIS PROJECT WILL BE THE RESPONSIBILITY OF THE CONTRACTOR.
- IF TRAFFIC WILL BE IMPACTED BY CONSTRUCTION, A TRAFFIC CONTROL PLAN MUST BE SUBMITTED AND APPROVED BY THE CITY TRAFFIC ENGINEER AT traffic@wichita.gov BEFORE CONSTRUCTION CAN BEGIN. THE CONTRACTOR SHALL BE RESPONSIBLE FOR ALL TRAFFIC CONTROL MEASURES TO FACILITATE CONSTRUCTION. ALL CONSTRUCTION ZONE MARKINGS AND SIGNAGE SHALL CONFORM TO THE LATEST VERSION OF THE MANUAL ON UNIFORM TRAFFIC CONTROL DEVICES (MUTCD) AS PUBLISHED BY THE US DEPT. OF TRANSPORTATION, FEDERAL HIGHWAY ADMINISTRATION. ALL COSTS ASSOCIATED WITH CONSTRUCTION MARKINGS AND SIGNAGE SHALL BE THE CONTRACTOR'S RESPONSIBILITY.
- ALL ELEVATIONS SHOWN ARE NGVD 29 VERTICAL DATUM TO MATCH PREVIOUS PHASES OF THIS DEVELOPMENT.
- ALL AREAS DISTURBED DURING CONSTRUCTION THAT WILL NOT BE UNDER PROPOSED PAVEMENT SHALL BE RESTORED TO MATCH EXISTING CONDITIONS.
- ANY SIDEWALK, DRIVE APPROACH, CURB, OR STREET PAVEMENT REMOVED TO CONSTRUCT PROJECT MUST HAVE A PAVEMENT CUT PERMIT AND BE REPLACED BY CITY CONTRACTOR. PERMITS CAN BE OBTAINED BY CALLING 316-268-4501 OR 316-268-4480.
- ALL APPLICABLE FEES (TAP, EQUITY, IN LIEU OF & MAIN BENEFIT) MUST BE PAID BEFORE ANY CONNECTIONS CAN BE MADE ON THIS PROJECT. QUOTES CAN BE OBTAINED ON FEES BY CALLING 316-268-4555.
- CITY MAINTENANCE OF WATER MAINS ENDS AT RIGHT-OF-WAY OR EASEMENT LINE OR WITHIN TWO FEET OF VAULT.
- CONTRACTOR SHALL LIMIT THE EXTENT OF TRENCH OPEN OVERNIGHT AND WEEKENDS TO LESS THAN 50 FEET.
- EXISTING UTILITIES AND THEIR LOCATION, AS SHOWN ON THE PLANS REPRESENT THE BEST INFORMATION OBTAINABLE FOR DESIGN. LOCATION INFORMATION HAS BEEN OBTAINED FROM THE VARIOUS COMPANIES AND IS EITHER FROM COMPANY UTILITY DRAWINGS OR COMPANY PROVIDED FIELD LOCATIONS. THE PLAN LOCATIONS SHOWN ARE NOT GUARANTEED. ADDITIONAL EXISTING UTILITIES MAY ALSO BE ENCOUNTERED.
- OPENING AND CLOSING OF WATER VALVES SHALL BE DONE SLOWLY TO PREVENT DAMAGE TO THE WATER DISTRIBUTION SYSTEM FROM WATER HAMMER. ALL VALVES CLOSED BY THE CONTRACTOR MUST BE REOPENED AS NEW CONSTRUCTION PERMITS. THE PROJECT INSPECTOR MUST ASCERTAIN THAT ANY VALVE CLOSED BY THE CONTRACTOR IS REOPENED. THE CONTRACTOR WILL BE PERMITTED TO OPERATE WATER VALVES ONLY WHEN THE PROJECT INSPECTOR ASSIGNED TO THE PROJECT IS PRESENT.
- THE CONTRACTOR SHALL LAY A TRACER WIRE AND SET TEST STATIONS ALONG ALL WATER PIPE INSTALLED IN ACCORDANCE WITH CITY SPECIFICATIONS AND TRACER WIRE DETAIL ON DETAIL SHEET WL-101. COST IS SUBSIDIARY TO PIPE INSTALLATION.
- THE CONTRACTOR SHALL PROVIDE MATERIALS FOR TEMPORARY BLOWOFF OF WATERLINES. CONNECTIONS TO THE EXISTING WATERLINE(S) SHALL BE MADE WITH CLEAN, SWABBED PIPE AND FLUSHED UPON COMPLETION OF TIE-INS
- DEFLECTIONS AT PIPE JOINT OR COUPLINGS SHALL NOT EXCEED THE PIPE MANUFACTURERS RECOMMENDED MAXIMUM. WHERE DEFLECTIONS ARE GREATER THAN THE MAXIMUM ALLOWED, THE CONTRACTOR SHALL UTILIZE CIMJ LONG SLEEVE OR MULTIPLE JOINTS.
- ANY EXISTING JOINT EXPOSED DURING EXCAVATION SHALL BE REPLACED IF WITHIN FOUR FEET OF PROPOSED JOINT.
- VALVES 12 INCH AND LARGER ARE TO BE OPERATED BY THE CITY WATER DISTRIBUTION DIVISION. 48 HOURS OF ADVANCE NOTICE IS REQUIRED WITH THE WATER DISPATCH AT 316-291-8921.
- THE CONTRACTOR SHALL PROTECT FROM DAMAGE AND SUPPORT EXISTING UTILITIES THROUGH CONSTRUCTION AS APPROVED BY THE UTILITY OWNER AND THE ENGINEER AT THE CONTRACTOR'S EXPENSE.
- WORK DONE UNDER THIS PROJECT IS SUBJECT TO THE CITY OF WICHITA REQUIREMENTS FOR "CONSTRUCTION OF INFRASTRUCTURE IMPROVEMENTS BY PRIVATE CONTRACT". THE CONTRACTOR SHALL BE FAMILIAR AND COMPLY WITH ALL OF THE REQUIREMENTS, INCLUDING BONDING, INSPECTION, TESTING, NOTIFICATION, PROVIDING AS-BUILT DRAWINGS, PAYING FOR ALL NECESSARY CONNECTIONS, AND/OR STREET REPAIR FEES AND PROVIDING PIPE MATERIAL AND OTHER CERTIFICATIONS.
- DEVELOPER FOR THIS PROJECT IS:  
 FLINT HILLS NATIONAL GOLF CLUB, INC  
 BY: DEVLIN FINANCIAL, INC., MANAGER  
 THOMAS M. MACK

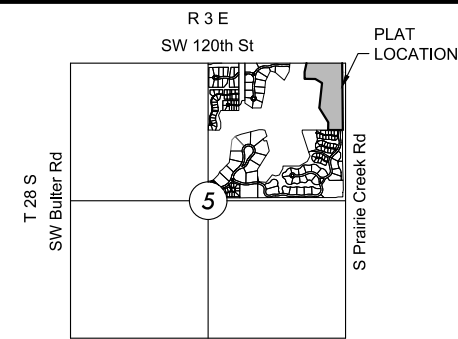
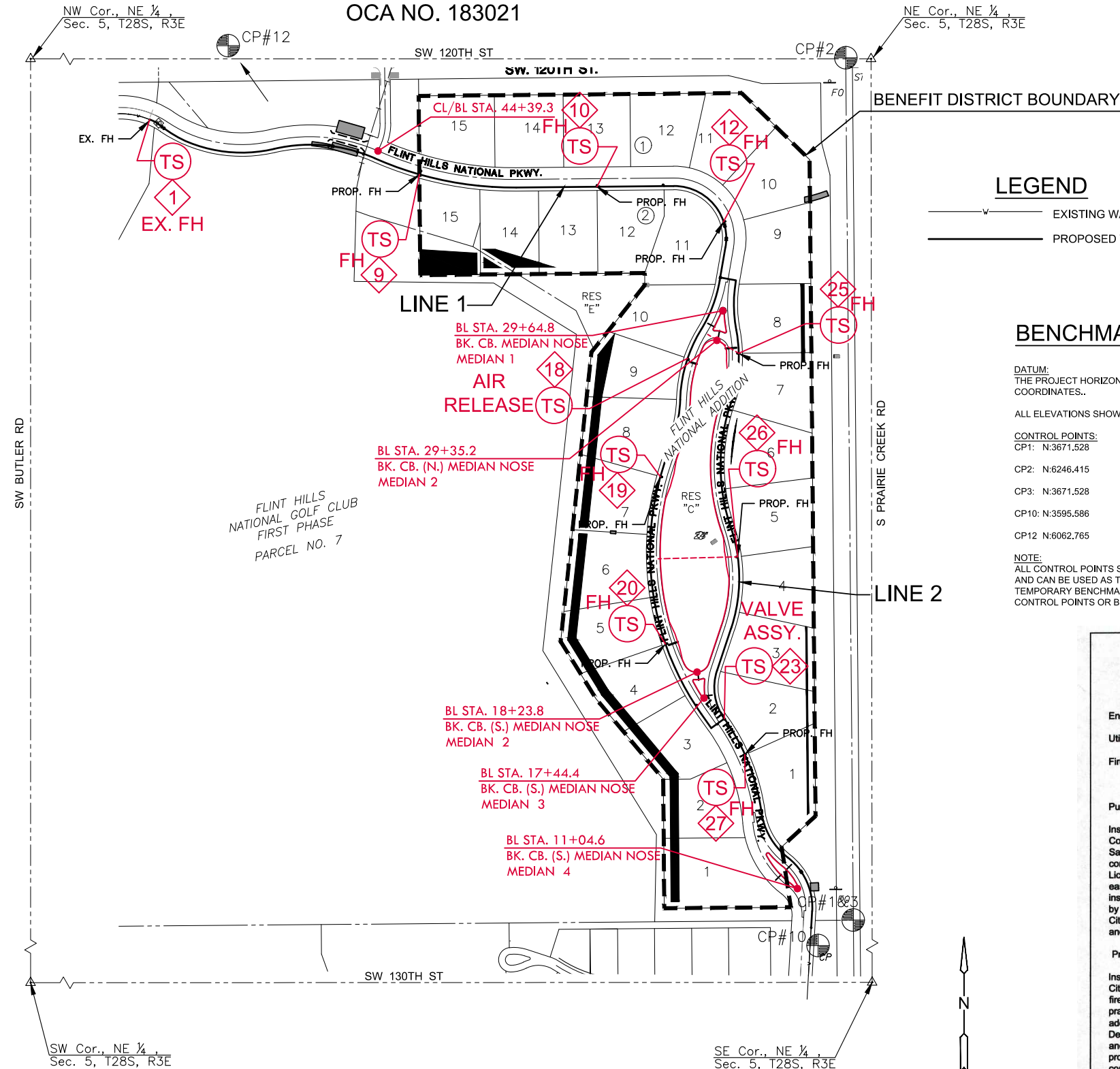
**AS-BUILT PLANS - FEBRUARY 2020**

INSPECTED BY: LARRY SCHALLER, MKEC ENGINEERING INC  
 CONSTRUCTED BY: NOWAK CONSTRUCTION CO. INC.  
 CONTRACTOR SUPERINTENDENT: DAVE STARECK  
 SUPPLIER:

WATER DISTRIBUTION SYSTEM IMPROVEMENTS  
 TO SERVE  
**FLINT HILLS NATIONAL ADDITION**

THE CITY OF ANDOVER, KANSAS  
 CITY OF WICHITA PRIVATE PROJECT NO. 2235PPW

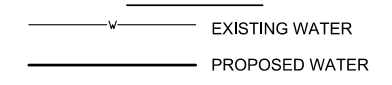
OCA NO. 183021



**INDEX TO DRAWINGS**

SHEET NO.	DESCRIPTION
01	TITLE SHEET
02-04	WATER DETAILS
05-08	LINE 1
09-10	LINE 2
11	EROSION CONTROL PLAN
12	BUBBLE MAP
13-17	BMP SHEETS
18	FINAL PLAT

**LEGEND**



**BENCHMARKS/CONTROL POINTS**

DATUM: THE PROJECT HORIZONTAL DATUM IS BASED ON THE PREVIOUSLY ESTABLISHED PLATTED COORDINATES.

ALL ELEVATIONS SHOWN ARE BASED ON THE NGVD29 VERTICAL DATUM.

**CONTROL POINTS:**

POINT	Easting	Northing	Elevation	Notes
CP1	N: 3671.528	E: 8312.987	EL: 1313.855	SC 1/2" SE
CP2	N: 6246.415	E: 8290.684	EL: 1293.272	SC 1/2" SE
CP3	N: 3671.528	E: 8312.978	EL: 1315.344	SC 3/4" ALUM BUTLER CO.
CP10	N: 3595.586	E: 8207.699	EL: 1318.664	CPA
CP12	N: 6062.765	E: 6818.740	EL: 1291.346	+CUT SQ/CUT

**NOTE:** ALL CONTROL POINTS SHOWN HAVE ELEVATIONS ESTABLISHED BY DIFFERENTIAL LEVELING AND CAN BE USED AS TEMPORARY BENCHMARKS. WHEN USING A CONTROL POINT AS A TEMPORARY BENCHMARK, IT IS RECOMMENDED THAT CROSS-CHECKS BE MADE TO OTHER CONTROL POINTS OR BENCHMARKS TO CONFIRM ELEVATIONS PRIOR TO USE.

**APPROVED AS NOTED**  
 BY WICHITA PUBLIC WORKS  
 ENGINEERING DIVISION  
 & BY ANDOVER FIRE DEPARTMENT

Engineering: *Ath Gatchney 7-23-19*  
 Utilities: *Dan Jolley 7-23-19*  
 Fire Department: *William AFR 7-23-19*

**NOTE TO CONTRACTORS**

**Public Property:**  
 Inspection and testing for the water line is to be provided by a Licensed Consulting Engineering Firm under contract with the Owner/Developer. Said inspection to be in accordance with the City of Wichita standard construction engineering practices and certified by a Professional Engineer Licensed in the state of Kansas. No work shall be performed in dedicated easements or public rights-of-way by the Contractor without such inspection nor shall any work be commenced without written authorization by the City Engineer. All Construction and Materials shall comply with the City of Wichita Specifications and Standards and Special Provision (on file and available in the City Engineer's office) or on the City's Website.

**Private Property:**  
 Installation and testing for the fire protection line is to be performed by a City of Wichita licensed fire protection contractor in accordance with the fire codes as adopted by the City of Wichita. All material and construction practices for the fire protection line shall comply with the fire codes as adopted by the City of Wichita (available from the City of Wichita Fire Department). The contractor shall not commence work without notification and approval of the Wichita Fire Department. Inspection of the fire protection line is to be provided by a licensed Engineering Firm under contract with the Owner/Developer and the Fire Department. The contractor shall not start work until the project inspector is assigned to the project and present on the site. Any work done without inspection will be required to be uncovered for inspection.

An approved copy of these plans signed by City staff is required on-site.



**FLINT HILLS NATIONAL ADDITION**  
 WATER DISTRIBUTION PLANS FOR  
 PHASE 6

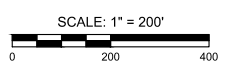
©2020 MKEC Engineering All Rights Reserved  
 www.mkec.com  
 These drawings and their contents, including, but not limited to, all concepts, designs, & ideas are the exclusive property of MKEC Engineering (MKEC), and may not be used or reproduced in any way without the express consent of MKEC.

**TITLE SHEET**

PROJECT NO.	2235PPW
DATE	JUNE 2019
SCALE	1" = 200'
DESIGNED	RWB
DRAWN	RWB
CHECKED	SLF
NO.	0
REVISION	07/22/19
SHEET NO.	01 OF 18

**NOTE: CONTRACTOR TO VERIFY DEPTH AND LOCATION OF EXISTING UTILITIES PRIOR TO CONSTRUCTION.**

**NOTE: WATER LINE VALVES TO BE OPERATED BY CONTRACTOR ONLY IF WATER INSPECTOR IS ON SITE.**

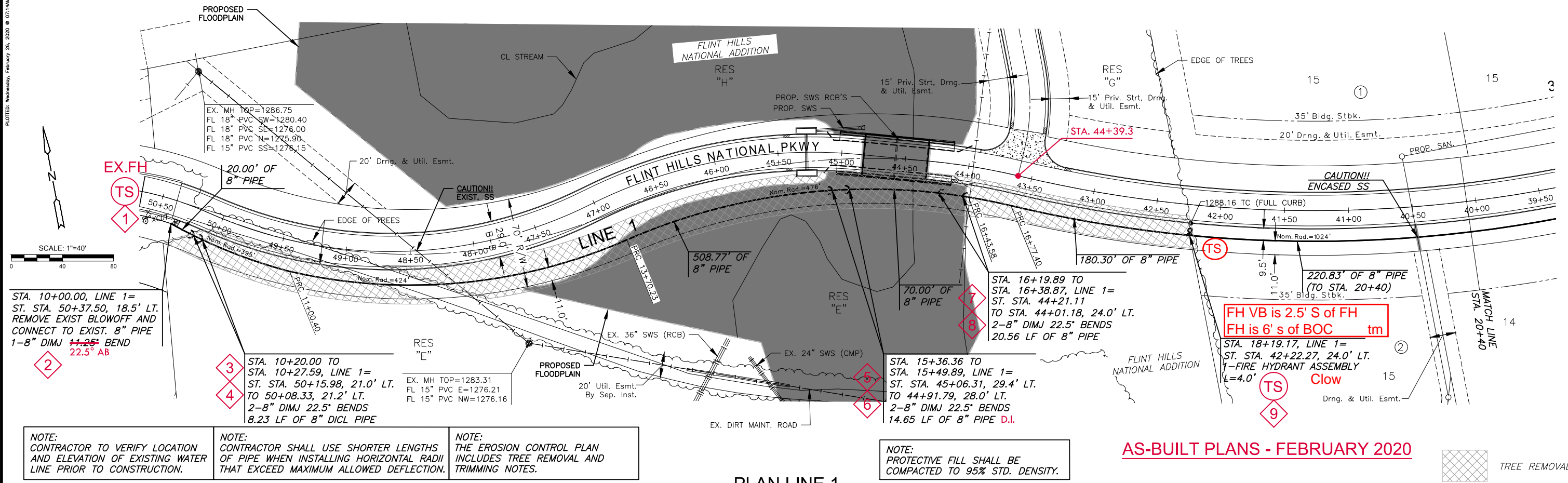




WATER DISTRIBUTION PLANS FOR  
**FLINT HILLS NATIONAL ADDITION**  
 PHASE 6

©2020 MKEC Engineering All Rights Reserved  
 www.mkec.com  
 These drawings and their contents, including, but not limited to, all concepts, designs, & ideas are the exclusive property of MKEC Engineering (MKEC), and may not be used or reproduced in any way without the express consent of MKEC.

LINE 1		
PROJECT NO.	2235PPW	
DATE	JUNE 2019	
SCALE	1"=40'	
DESIGNED	DRAWN	CHECKED
RWB	RWB	SLF
NO.	REVISION	DATE
2	ELEVATION REVISION	10/28/19
1	FLOODPLAIN PERMIT	08/22/19
0	IFC	07/22/19
SHEET NO. 05 OF 18		



STA. 10+00.00, LINE 1= ST. STA. 50+37.50, 18.5' LT. REMOVE EXIST BLOWOFF AND CONNECT TO EXIST. 8" PIPE 1-8" DIMJ 11.25' BEND 22.5° AB

STA. 10+20.00 TO STA. 10+27.59, LINE 1= ST. STA. 50+15.98, 21.0' LT. TO 50+08.33, 21.2' LT. 2-8" DIMJ 22.5° BENDS 8.23 LF OF 8" DI CL PIPE

EX. MH TOP=1283.31  
 FL 15" PVC E=1276.21  
 FL 15" PVC NW=1276.16

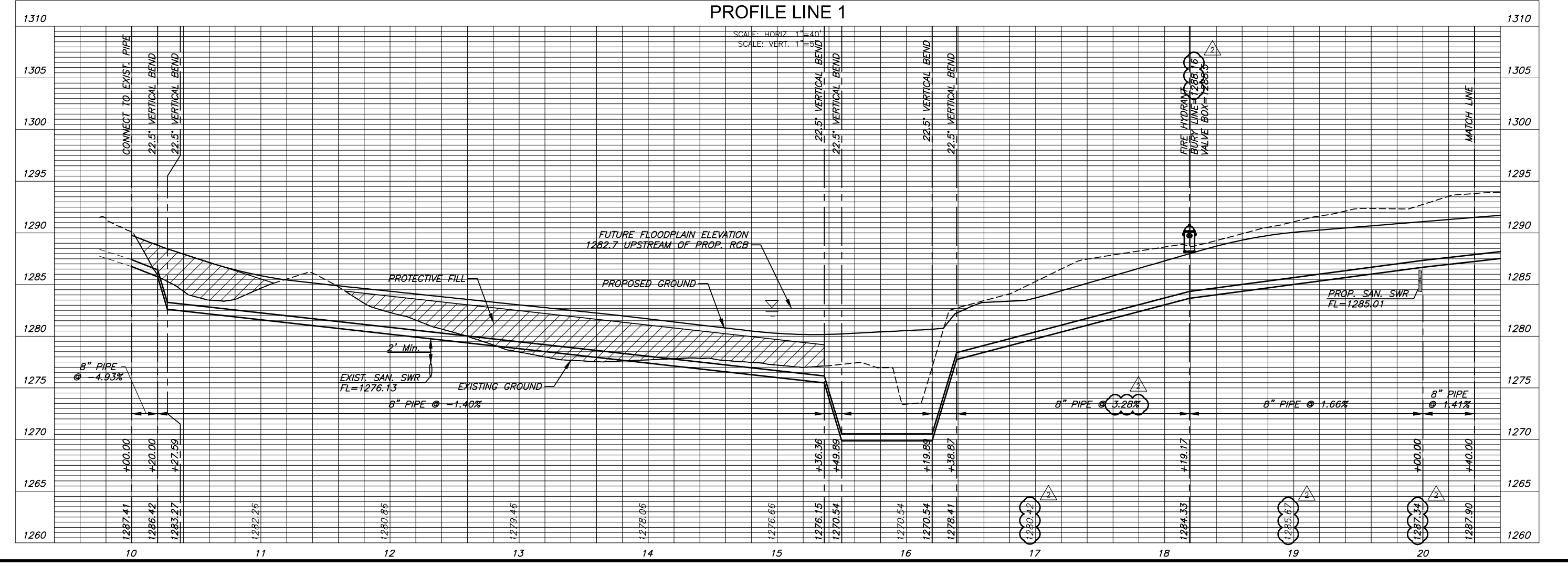
STA. 15+36.36 TO STA. 15+49.89, LINE 1= ST. STA. 44+06.31, 29.4' LT. TO 44+91.79, 28.0' LT. 2-8" DIMJ 22.5° BENDS 14.65 LF OF 8" PIPE D.I.

FH VB is 2.5' S of FH  
 FH is 6' S of BOC  
 Clow

- NOTE: CONTRACTOR TO VERIFY LOCATION AND ELEVATION OF EXISTING WATER LINE PRIOR TO CONSTRUCTION.
- NOTE: CONTRACTOR SHALL USE SHORTER LENGTHS OF PIPE WHEN INSTALLING HORIZONTAL RADII THAT EXCEED MAXIMUM ALLOWED DEFLECTION.
- NOTE: THE EROSION CONTROL PLAN INCLUDES TREE REMOVAL AND TRIMMING NOTES.

NOTE: PROTECTIVE FILL SHALL BE COMPACTED TO 95% STD. DENSITY.

AS-BUILT PLANS - FEBRUARY 2020



M:\CTAS\3\VOL7\PROJECT\250181\1801010686\_DEVLIN\_FLINT\_HILLS\_NATIONAL\_180686\_CAD\SHS\SUB CIVIL\WTR\180686-05-3201.DWG

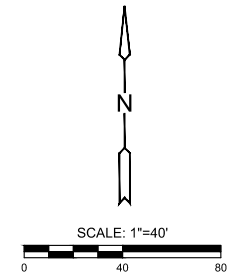
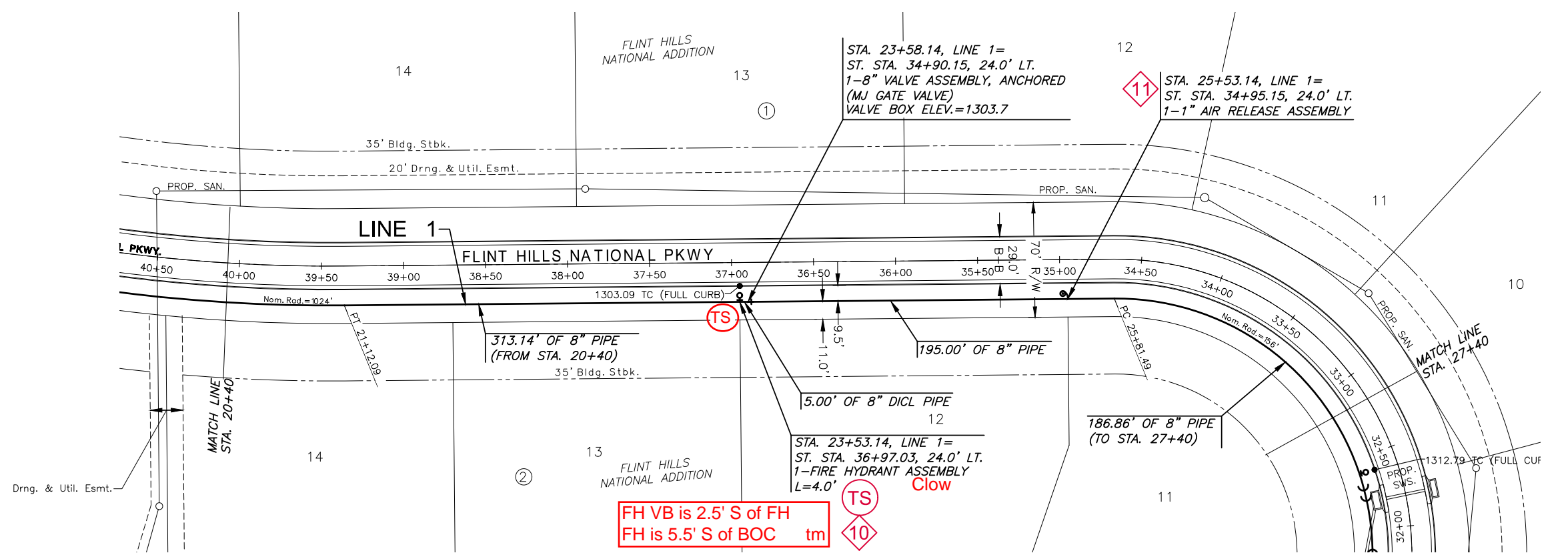
PLOTTED: Wednesday, February 26, 2020 8:50:44 AM



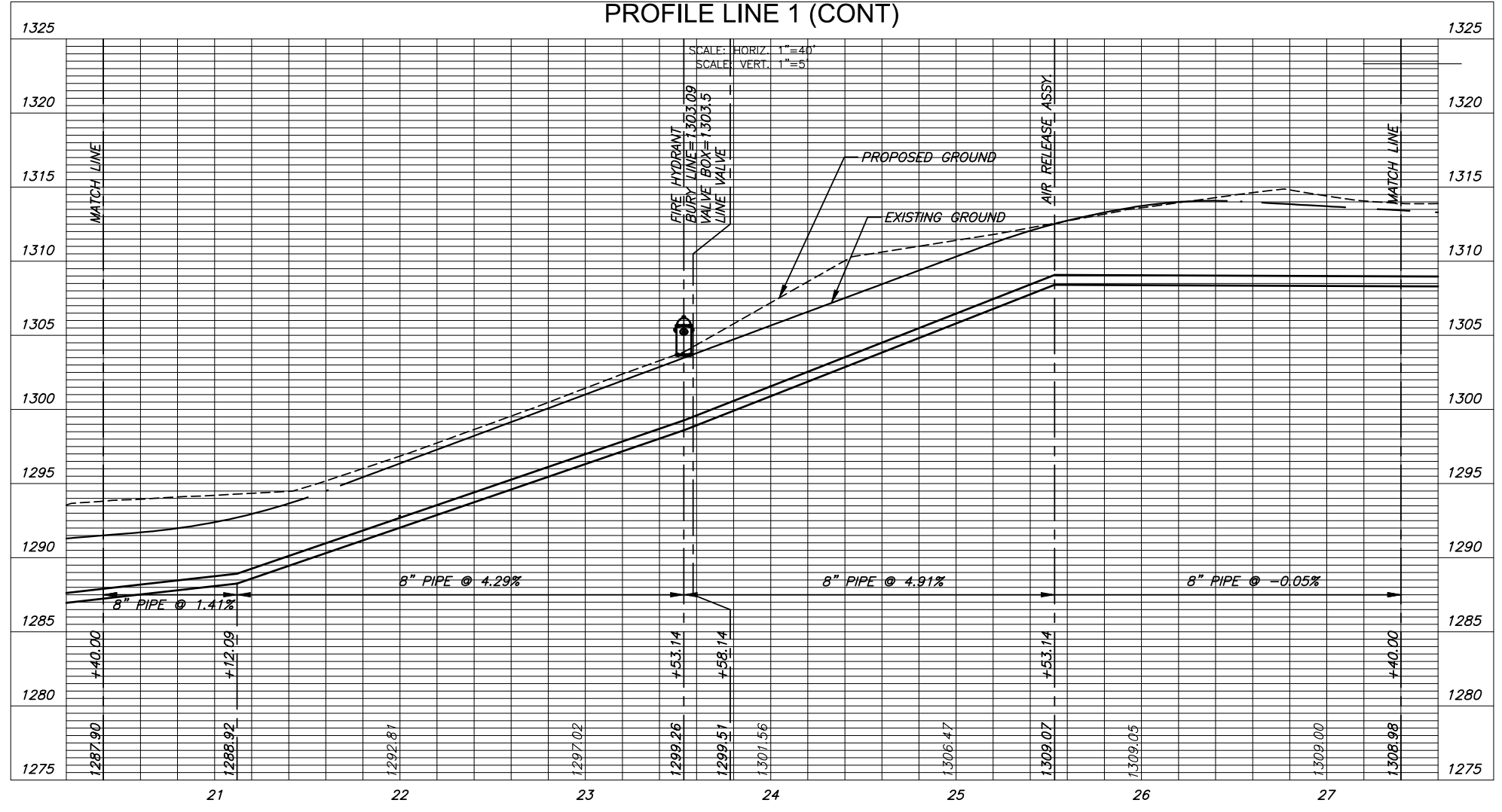
WATER DISTRIBUTION PLANS FOR  
**FLINT HILLS NATIONAL ADDITION**  
PHASE 6

NOTE:  
CONTRACTOR TO VERIFY LOCATION AND ELEVATION OF EXISTING WATER LINE PRIOR TO CONSTRUCTION.

NOTE:  
CONTRACTOR SHALL USE SHORTER LENGTHS OF PIPE WHEN INSTALLING HORIZONTAL RADII THAT EXCEED MAXIMUM ALLOWED DEFLECTION.



PLAN LINE 1 (CONT) AS-BUILT PLANS - FEBRUARY 2020



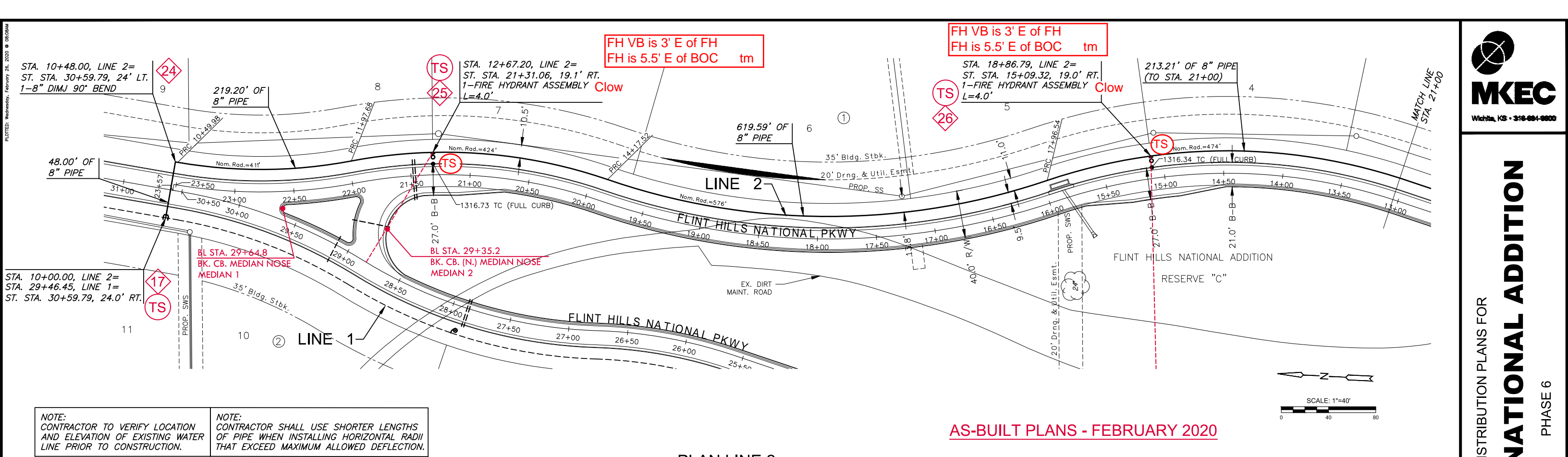
NO.	DESCRIPTION	APPROXIMATE LOCATION
1	FIRE HYDRANT ASSEMBLY	698' W. OF INTERSECTION OF PVT. DR. & FHN PKWY. ALONG ST. CL/BL & 22' N.
2	DIMJ 22.5° BEND	675' W. OF INTERSECTION OF PVT. DR. & FHN PKWY. ALONG ST. CL/BL & 18.5' N.
3	DIMJ 22.5° BEND	655' W. OF INTERSECTION OF PVT. DR. & FHN PKWY. ALONG ST. CL/BL & 21' N.
4	DIMJ 22.5° BEND	647' W. OF INTERSECTION OF PVT. DR. & FHN PKWY. ALONG ST. CL/BL & 21.2' N.
5	DIMJ 22.5° BEND	292' W. OF INTERSECTION OF PVT. DR. & FHN PKWY. ALONG ST. CL/BL & 29.6' N.
6	DIMJ 22.5° BEND	130.6' W. OF INTERSECTION OF PVT. DR. & FHN PKWY. ALONG ST. CL/BL & 28' N.
7	DIMJ 22.5° BEND	60.4' W. OF INTERSECTION OF PVT. DR. & FHN PKWY. ALONG ST. CL/BL & 24' N.
8	DIMJ 22.5° BEND	39.3' W. OF INTERSECTION OF PVT. DR. & FHN PKWY. ALONG ST. CL/BL & 24' N.
9	FIRE HYDRANT ASSEMBLY	38.5' E. OF INTERSECTION OF PVT. DR. & FHN PKWY. ALONG ST. CL/BL & 24' N.
10	FIRE HYDRANT ASSEMBLY	@ BK. CB. ON (N.) MEADIAN 2 NOSE 730.3' N. ALONG BL FHN PKWY. & 24' N.
11	1" AIR RELEASE ASSEMBLY	@ BK. CB. ON (N.) MEADIAN 2 NOSE 530.3' N. ALONG BL FHN PKWY. & 24' N.
12	FIRE HYDRANT ASSEMBLY	@ BK. CB. ON (N.) MEADIAN 1 NOSE 275.4' N. ALONG BL FHN PKWY & 24' W.
13	DIMJ 22.5° BEND	@ BK. CB. ON (N.) MEADIAN 1 NOSE 263.2' N. ALONG BL FHN PKWY. & 24' W.
14	DIMJ 22.5° BEND	@ BK. CB. ON (N.) MEADIAN 1 NOSE 255.7' N. ALONG BL FHN PKWY. & 24' W.
15	DIMJ 22.5° BEND	@ BK. CB. ON (N.) MEADIAN 1 NOSE 221' N. ALONG BL FHN PKWY. & 24' W.
16	DIMJ 22.5° BEND	@ BK. CB. ON (N.) MEADIAN 1 NOSE 214' N. ALONG BL FHN PKWY. & 24' W.
17	8" VALVE ASSEMBLY	@ BK. CB. ON (N.) MEADIAN 2 NOSE 158.5' N. ALONG BL FHN PKWY. & 24' W.
18	1" AIR RELEASE ASSEMBLY	@ BK. CB. ON (N.) MEADIAN 2 NOSE 86.8' S. ALONG BL FHN PKWY. & 24' W.
19	FIRE HYDRANT ASSEMBLY	@ BK. CB. ON (S.) MEADIAN 2 NOSE 608' N. ALONG BL FHN PKWY. & 24' W.
20	FIRE HYDRANT ASSEMBLY	@ BK. CB. ON (S.) MEADIAN 2 NOSE 114.5' N. ALONG BL FHN PKWY. & 24' W.
21	1" AIR RELEASE ASSEMBLY	@ BK. CB. ON (S.) MEADIAN 3 NOSE 0.07' S. ALONG BL FHN PKWY. & 24' W.
22	DIMJ 90° BEND	@ BK. CB. ON (S.) MEADIAN 3 NOSE 84.7' S. ALONG BL FHN PKWY. 23' W.
23	8" VALVE ASSEMBLY	@ BK. CB. ON (S.) MEADIAN 3 NOSE 85.8' S. ALONG BL FHN PKWY. & 24' E.
24	DIMJ 90° BEND	@ BK. CB. ON (N.) MEADIAN 2 NOSE 177.8' N.E. ALONG BL FHN PKWY. & 24' E.
25	FIRE HYDRANT ASSEMBLY	@ BK. CB. ON (N.) MEADIAN 2 NOSE 0.80' N. ALONG BL FHN PKWY. & 108.7' SE.
26	FIRE HYDRANT ASSEMBLY	@ BK. CB. ON (S.) MEADIAN 2 NOSE 366.4' N. ALONG BL FHN PKWY. & 237.6' E.
27	FIRE HYDRANT ASSEMBLY	@ BK. CB. ON (S.) MEADIAN 3 NOSE 204.7' S. ALONG BL FHN PKWY. & 24' E.
28	ANCHOR VALVE ASSEMBLY	@ BK. CB. ON (S.) MEADIAN 4 NOSE 124.6' S. ALONG BL FHN PKWY. & 24' E.

©2020 MKEC Engineering All Rights Reserved  
www.mkec.com  
These drawings and their contents, including, but not limited to, all concepts, designs, & ideas are the exclusive property of MKEC Engineering (MKEC), and may not be used or reproduced in any way without the express consent of MKEC.

LINE 1 (CONT)	
PROJECT NO.	2235PPW
DATE	JUNE 2019
SCALE	1"=40'
DESIGNED	DRAWN
RWB	RWB
CHECKED	SLF
NO.	REVISION
0	DATE
0	07/22/19
SHEET NO.	
06 OF 18	





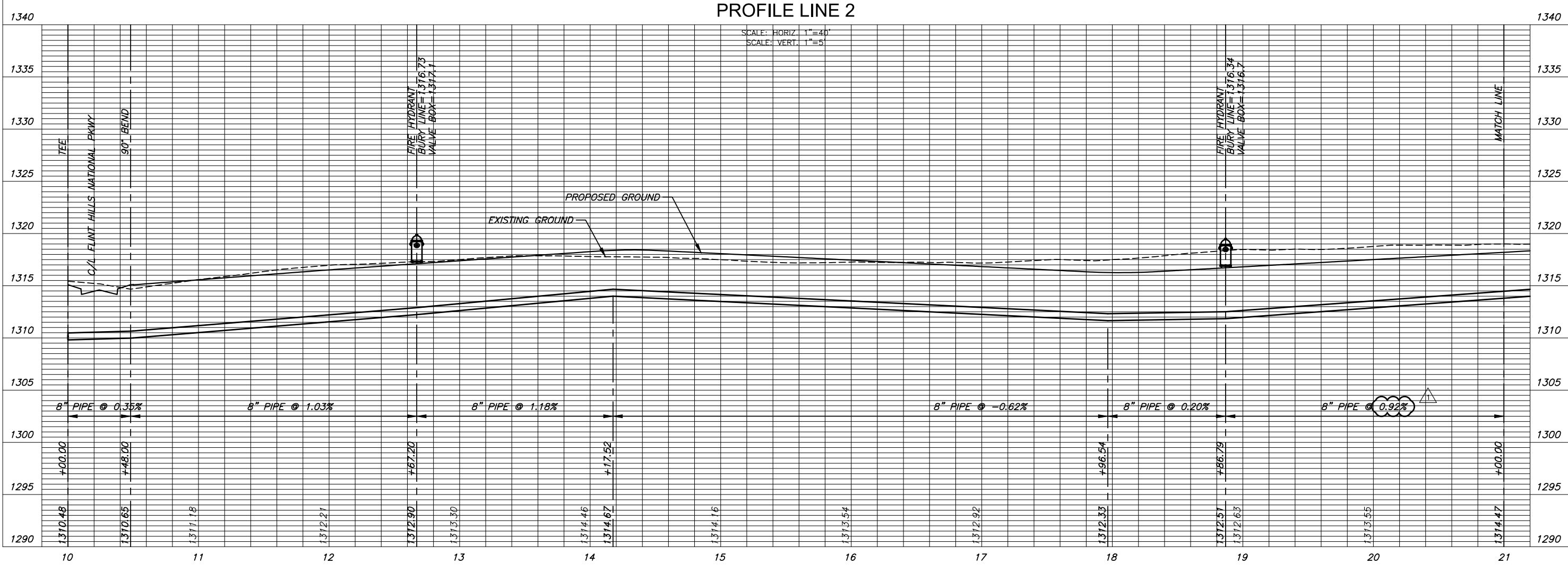


NOTE: CONTRACTOR TO VERIFY LOCATION AND ELEVATION OF EXISTING WATER LINE PRIOR TO CONSTRUCTION.

NOTE: CONTRACTOR SHALL USE SHORTER LENGTHS OF PIPE WHEN INSTALLING HORIZONTAL RADII THAT EXCEED MAXIMUM ALLOWED DEFLECTION.

AS-BUILT PLANS - FEBRUARY 2020

PLAN LINE 2  
PROFILE LINE 2

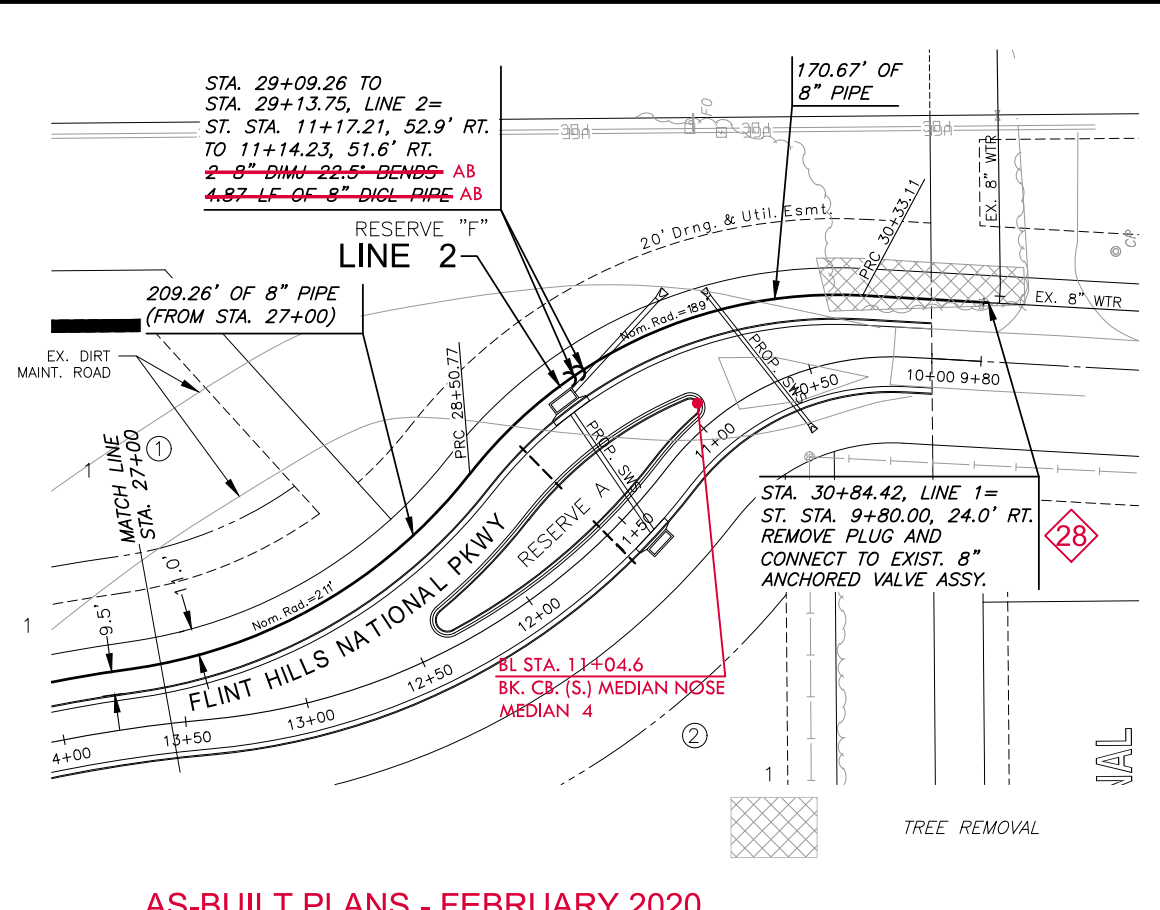
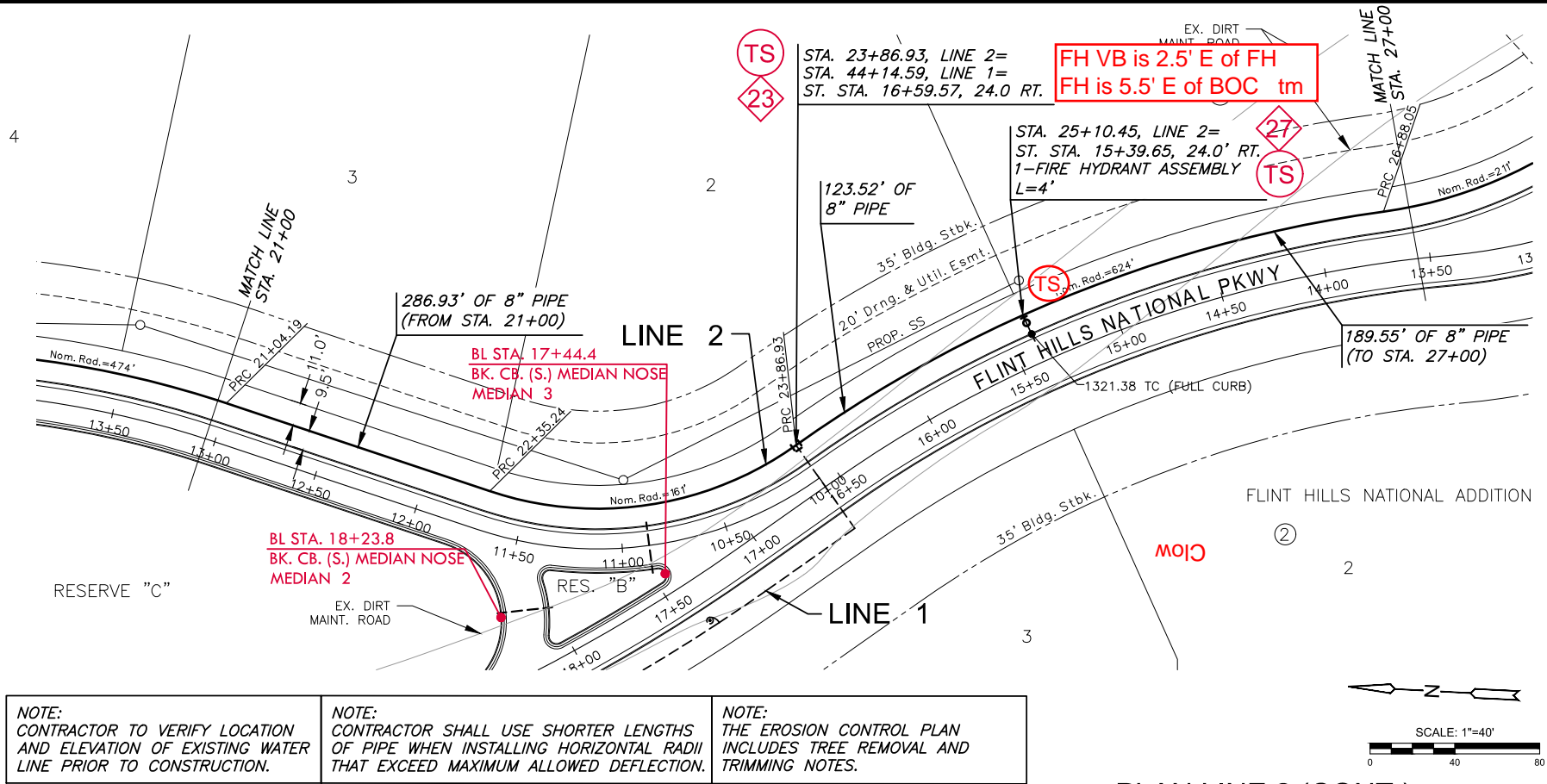


WATER DISTRIBUTION PLANS FOR  
**FLINT HILLS NATIONAL ADDITION**  
PHASE 6

©2020 MKEC Engineering All Rights Reserved  
www.mkec.com  
These drawings and their contents, including, but not limited to, all concepts, designs, & ideas are the exclusive property of MKEC Engineering (MKEC), and may not be used or reproduced in any way without the express consent of MKEC.

<b>LINE 2</b>	
PROJECT NO.	2235PPW
DATE	JUNE 2019
SCALE	1"=40'
DESIGNED	DRAWN
RWB	RWB
CHECKED	SLF
NO.	REVISION
1	SLOPE REVISION
0	IFC
	DATE
	10/28/19
	07/22/19
SHEET NO.	
09 OF 18	

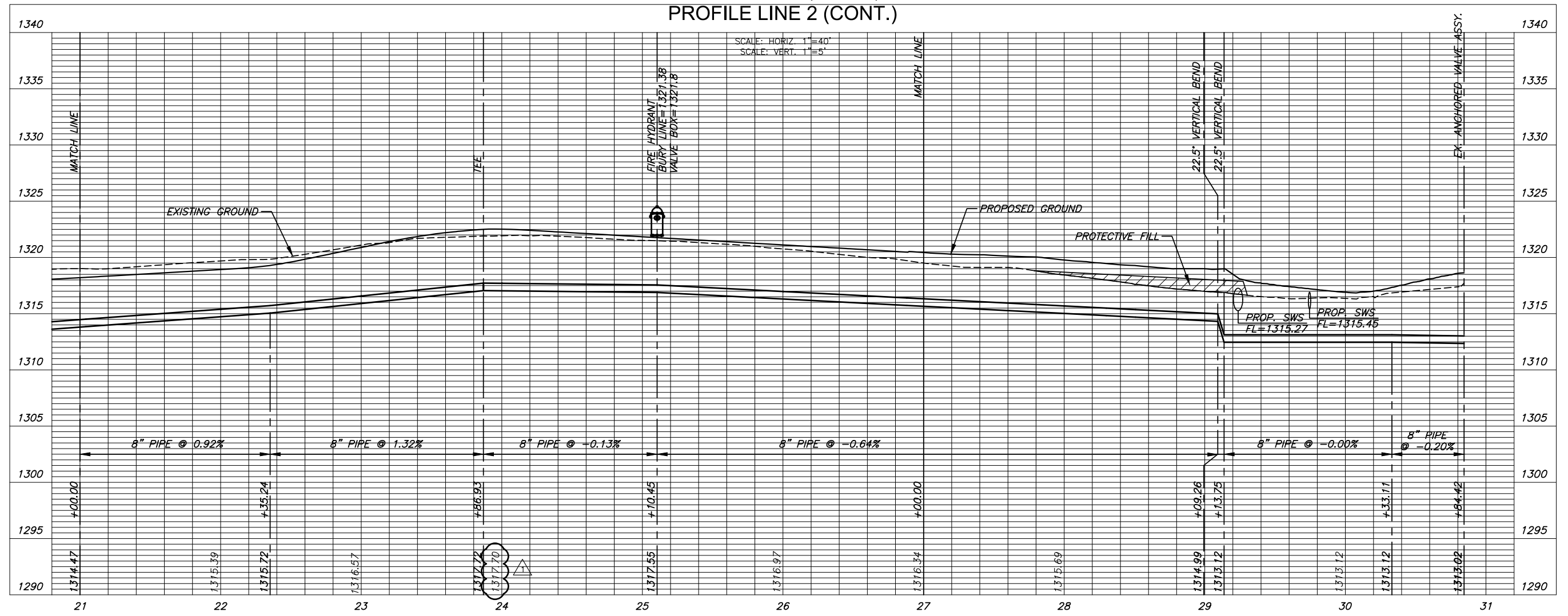
PLOTTED: Wednesday, February 26, 2020 @ 08:50AM  
 MCTWAS03V0L7\PROJECT\820181181010085\_DEVLIN\_FLINT\_HILLS NATIONAL\_180065\_CADD\SHS05 CIVIL\WTR180065-05-3206.DWG



**NOTE:** CONTRACTOR TO VERIFY LOCATION AND ELEVATION OF EXISTING WATER LINE PRIOR TO CONSTRUCTION.  
**NOTE:** CONTRACTOR SHALL USE SHORTER LENGTHS OF PIPE WHEN INSTALLING HORIZONTAL RADII THAT EXCEED MAXIMUM ALLOWED DEFLECTION.  
**NOTE:** THE EROSION CONTROL PLAN INCLUDES TREE REMOVAL AND TRIMMING NOTES.

PLAN LINE 2 (CONT.)  
PROFILE LINE 2 (CONT.)

AS-BUILT PLANS - FEBRUARY 2020



WATER DISTRIBUTION PLANS FOR  
**FLINT HILLS NATIONAL ADDITION**  
 PHASE 6

©2020 MKEC Engineering  
 All Rights Reserved  
 www.mkec.com  
 These drawings and their contents, including, but not limited to, all concepts, designs, & ideas are the exclusive property of MKEC Engineering (MKEC), and may not be used or reproduced in any way without the express consent of MKEC.

<b>LINE 2 (CONT)</b>	
PROJECT NO.	2235PPW
DATE	JUNE 2019
SCALE	1"=40'
DESIGNED	RWB
DRAWN	RWB
CHECKED	SLF
NO.	REVISION
1	ELEVATION REVISION
0	IFC
	DATE
	10/28/19
	07/22/19
SHEET NO.	
10 OF 18	