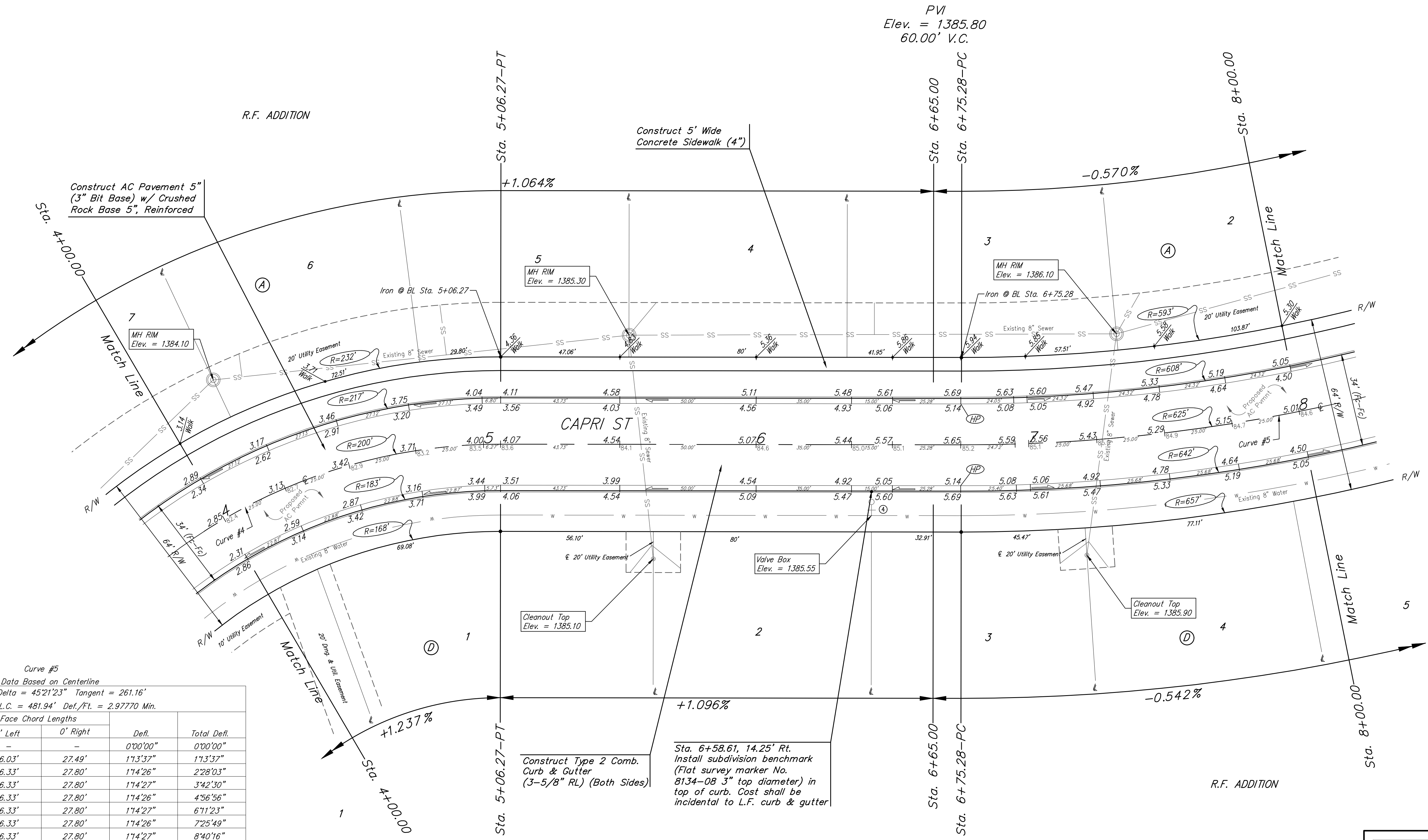
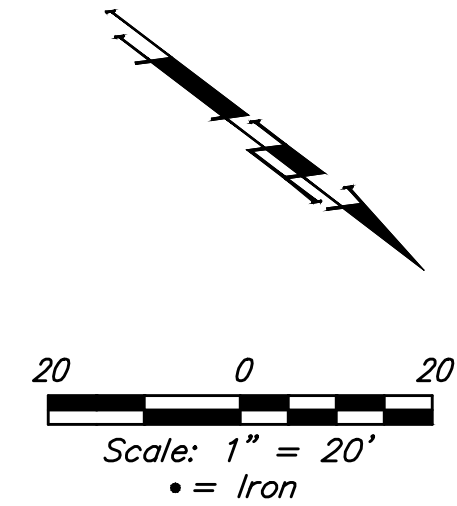


BENCHMARKS:

#1: "□" CUT CHISELED ON CURB,
15.2' S. OF SW COR., LOT 6,
BLOCK A, ROCKY FORD 2ND
ADDITION.
ELEV. = 1385.10 NAVD88

#2: "□" CUT CHISELED ON CURB,
8.6' N. & 11.7' W. OF SW COR.,
LOT 14, BLOCK C, ROCKY FORD
2ND ADDITION.
ELEV. = 1380.11 NAVD88



Curve #5
Curve Data Based on Centerline
Rad. = 625' Delta = 45°21'23" Tangent = 261.16'
Arc = 456.96' L.C. = 481.94' Def./Ft. = 2.97770 Min.

Station	Arc	Face Chord Lengths		Defl.	Total Defl.
		0' Left	0' Right		
6+75.28	-	-	-	0'00"00"	0'00"00"
7+00.00	24.72'	26.03'	27.49'	1'13"37"	1'13"37"
7+25.00	25.00'	26.33'	27.80'	1'14"26"	2'28"03"
7+50.00	25.00'	26.33'	27.80'	1'14"27"	3'42"30"
7+75.00	25.00'	26.33'	27.80'	1'14"26"	4'56"56"
8+00.00	25.00'	26.33'	27.80'	1'14"27"	6'11"23"
8+25.00	25.00'	26.33'	27.80'	1'14"26"	7'25"49"
8+50.00	25.00'	26.33'	27.80'	1'14"27"	8'40"16"
8+75.00	25.00'	26.33'	27.80'	1'14"26"	9'54"42"
9+00.00	25.00'	26.33'	27.80'	1'14"27"	11'09"09"
9+25.00	25.00'	26.33'	27.80'	1'14"27"	12'23"36"
9+50.00	25.00'	26.33'	27.80'	1'14"26"	13'38"02"
9+75.00	25.00'	26.33'	27.80'	1'14"27"	14'52"29"
10+00.00	25.00'	26.33'	27.80'	1'14"26"	16'06"55"
10+25.00	25.00'	26.33'	27.80'	1'14"27"	17'21"22"
10+50.00	25.00'	26.33'	27.80'	1'14"26"	18'35'48"
10+75.00	25.00'	26.33'	27.80'	1'14"27"	19'50'15"
11+00.00	25.00'	26.33'	27.80'	1'14"26"	21'04'41"
11+25.00	25.00'	26.33'	27.80'	1'14"27"	22'19'08"
11+32.24	7.24'	7.63'	8.05'	0'21"33"	22'40'41"

Roll type curb & gutter to be constructed on the pavement on this sheet.
Top of curb elevation are given for full height curb.

	R.F. Addition - Phase I
	CAPRI Sta. 4+00.00 to Sta. 8+00.00
<small>Baughman Company, P.A. 315 Ellis St. Wichita, KS 67211 P 316-262-7271 F 316-262-0149 ENGINEERING SURVEYING PLANNING LANDSCAPE ARCHITECTURE</small>	
PROJECT NUMBER 472-2019-085533	DESIGN AEG
REVISIONS:	DRAWN HW
	DATE 05/11/20
	SCALE Noted
	SHEET 10 OF 28