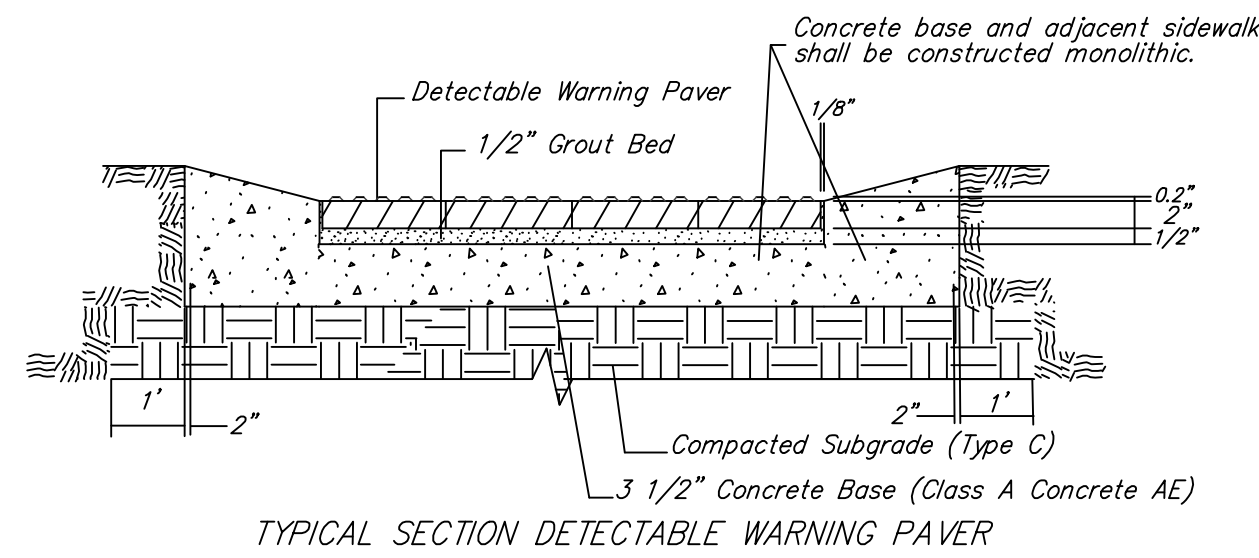
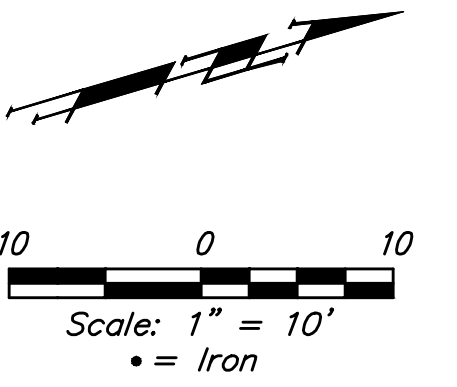


**BENCHMARKS:**

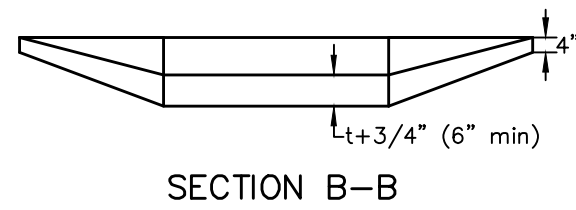
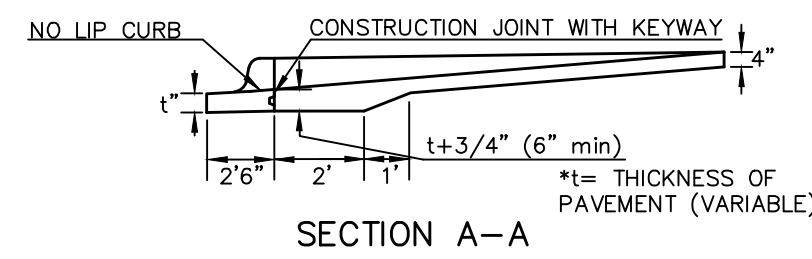
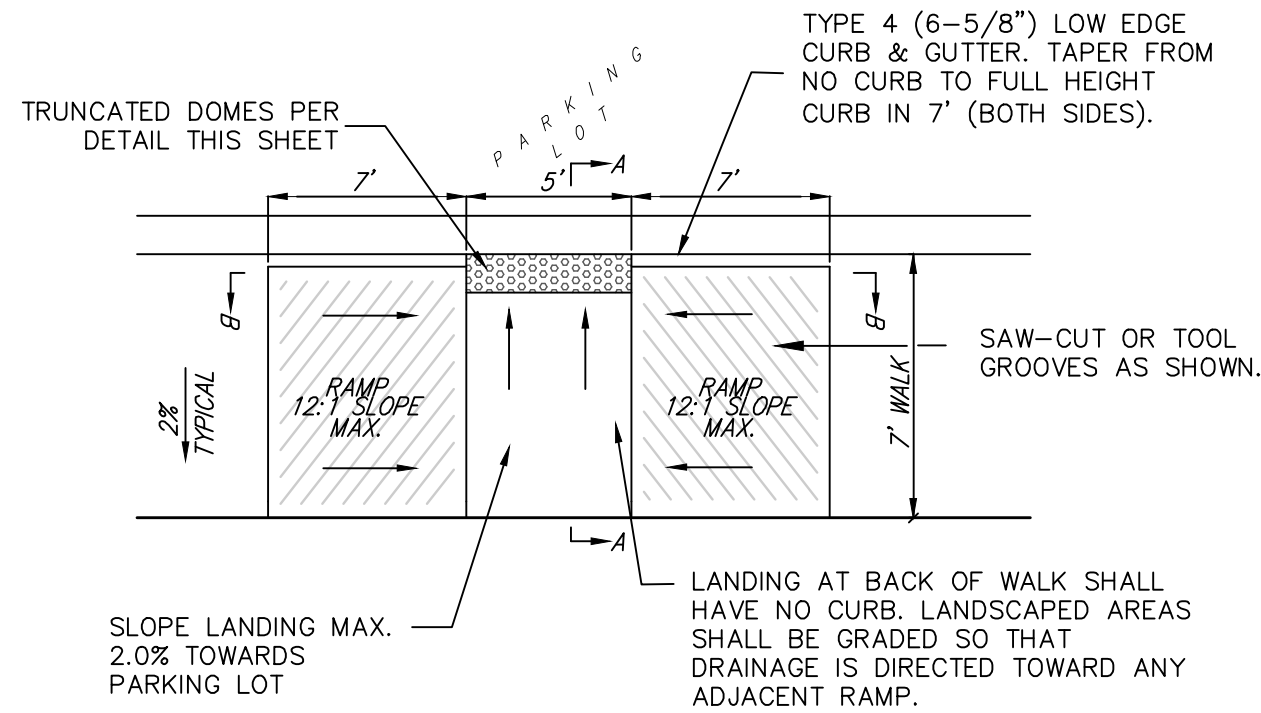
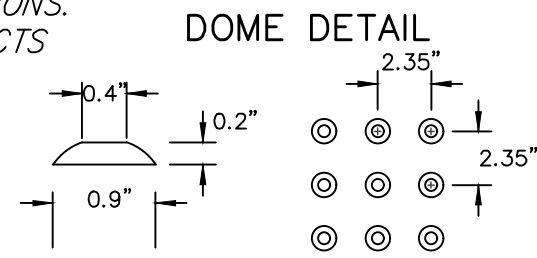
#1: "□" CUT CHISELED ON CURB,  
15.2' S. OF SW COR., LOT 6,  
BLOCK A, ROCKY FORD 2ND  
ADDITION.  
ELEV. = 1385.10 NAVD88

#2: "□" CUT CHISELED ON CURB,  
8.6' N. & 11.7' W. OF SW COR.,  
LOT 14, BLOCK C, ROCKY FORD  
2ND ADDITION.  
ELEV. = 1380.11 NAVD88

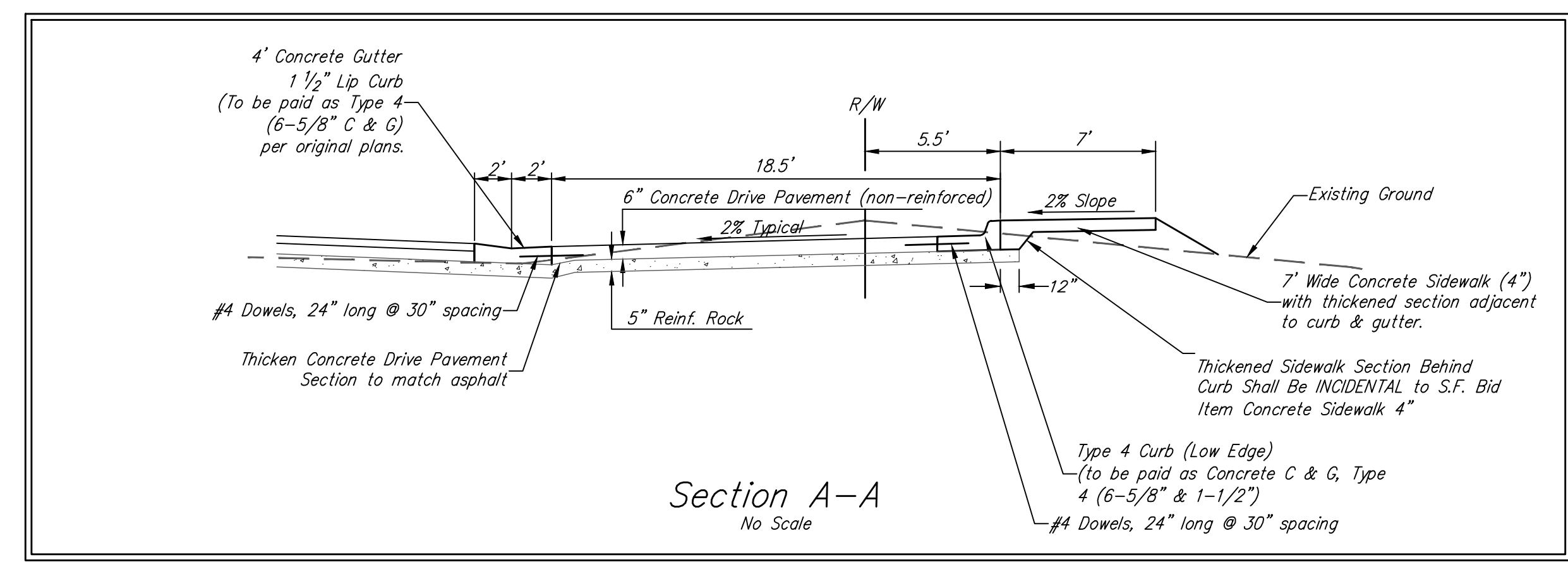
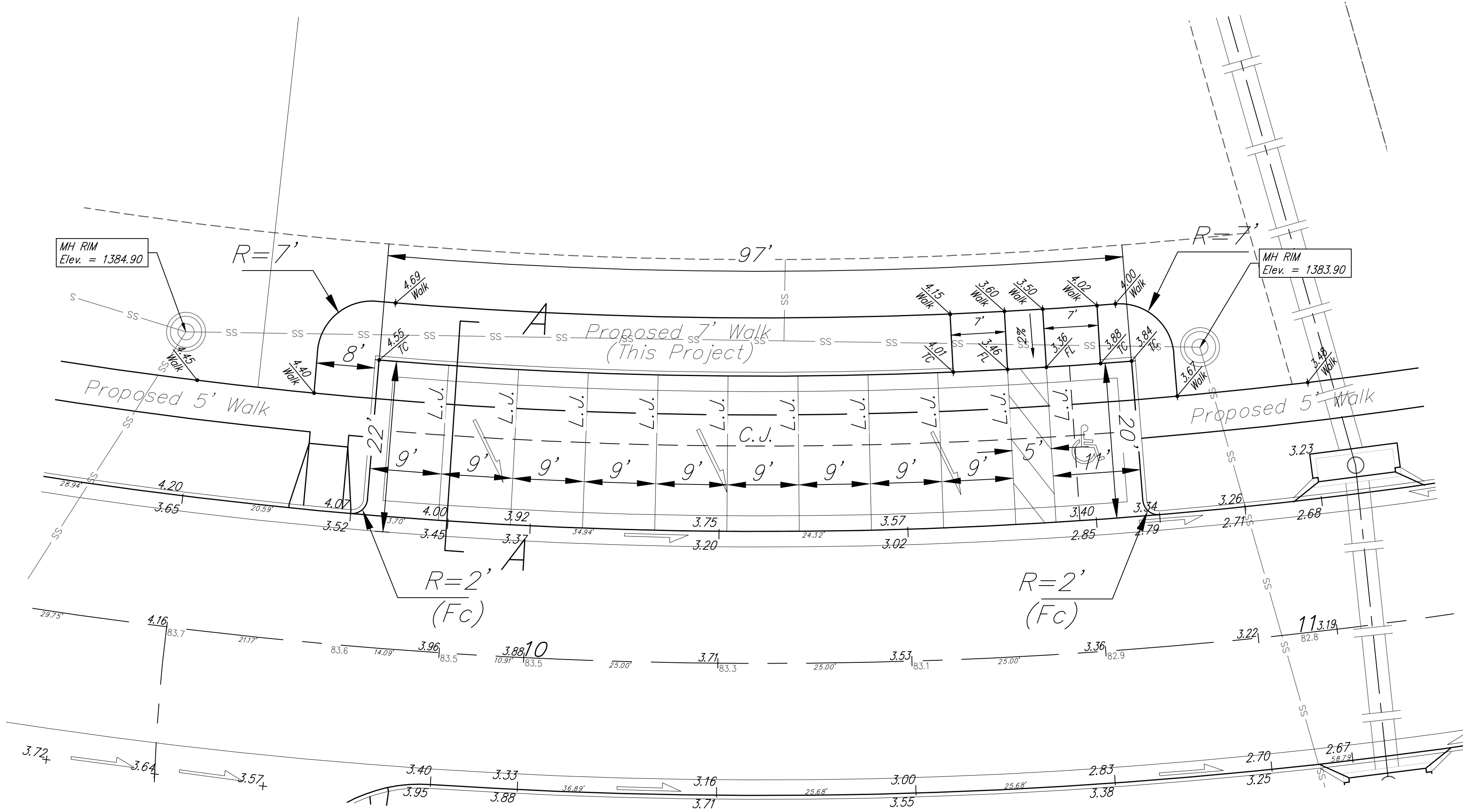


NOTE: HANOVER DETECTABLE WARNING PAVERS (OR AN APPROVED ALTERNATE) SHALL BE USED IN ALL WHEELCHAIR RAMPS. THE 11 3/4" RED 15' PAVER SHALL BE USED IN ALL APPLICATIONS.

HANOVER ARCHITECTURAL PRODUCTS  
240 BENDER ROAD  
HANOVER, PA 17331  
1-717-637-0500  
www.hanoverpavers.com



WHEELCHAIR RAMP DETAILS



Section A-A  
No Scale

6" Concrete Drive Pavement on this sheet to be tied to curb & gutter on all sides with #4 dowels, 24" long on 30" Centers.  
Parking area constructed with these plans to be maintained by HOA and permitted with Right-of-Way Use permit.

		R.F. Addition - Phase I ON-STREET PARKING	
		Baughman Company, P.A. 315 Ellis St. Wichita, KS 67211 P 316-262-7271 F 316-262-0149 ENGINEERING   SURVEYING   PLANNING   LANDSCAPE ARCHITECTURE	
PROJECT NUMBER 472-2019-085533	DESIGN AEG	DRAWN HW	DATE 05/11/20
REVISIONS:	APPROVED	SCALE Noted	SHEET 12 OF 28