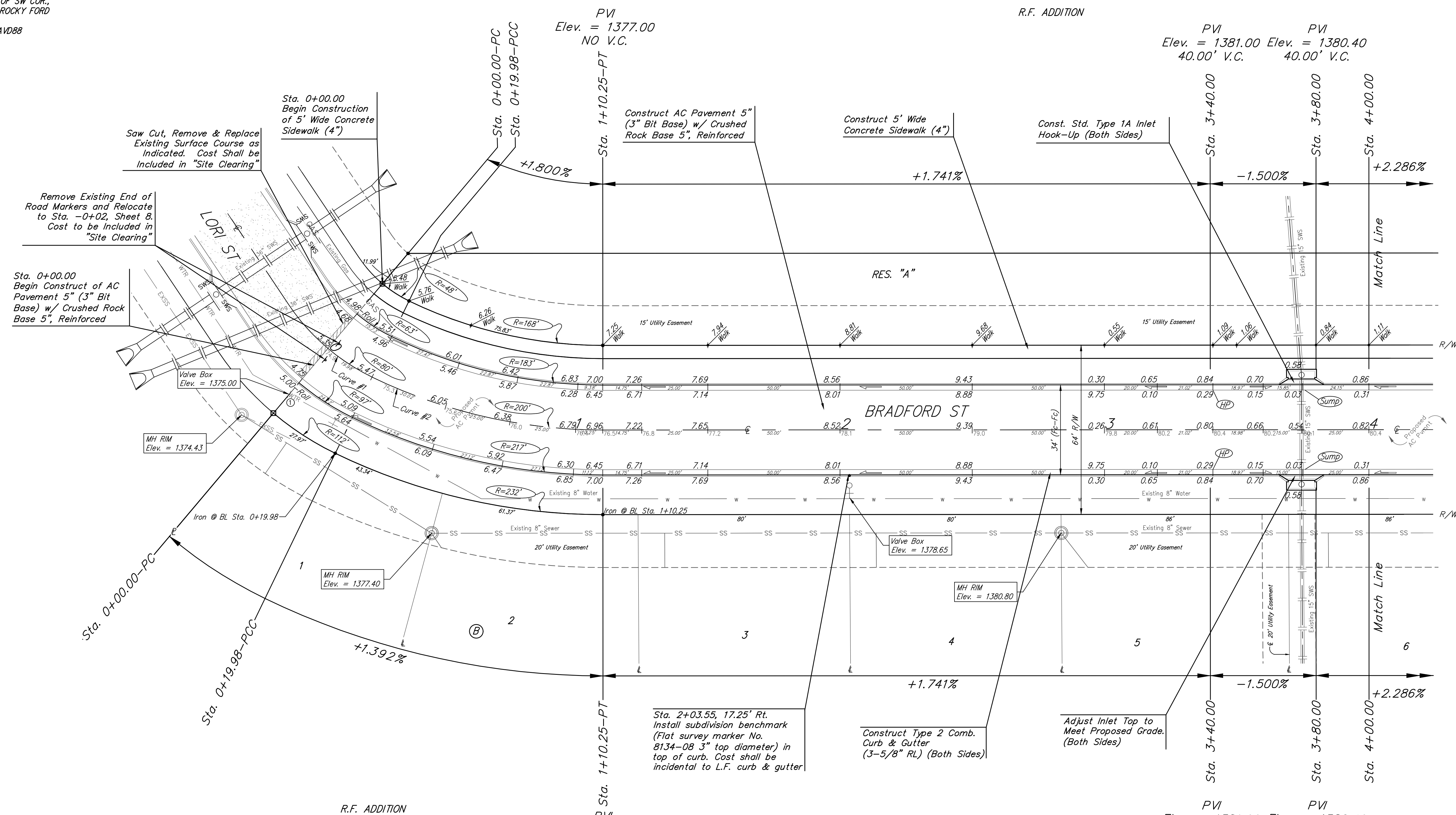
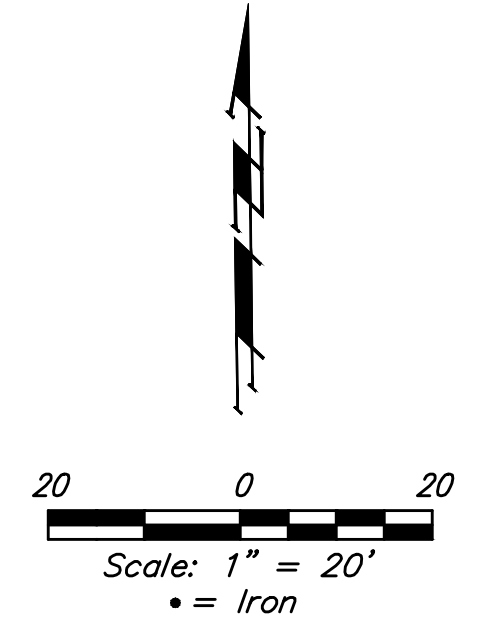


BENCHMARKS:
 #1: "□" CUT CHISELED ON CURB,
 15.2' S. OF SW COR., LOT 6,
 BLOCK A, ROCKY FORD 2ND
 ADDITION.
 ELEV. = 1385.10 NAVD88
 #2: "□" CUT CHISELED ON CURB,
 8.6' N. & 11.7' W. OF SW COR.,
 LOT 14, BLOCK C, ROCKY FORD
 2ND ADDITION.
 ELEV. = 1380.11 NAVD88



Curve #1
 Curve Data Based on Centerline
 Rad. = 80' Delta = 141°26' Tangent = 10.04'
 Arc = 19.98' L.C. = 19.92' Def./Ft. = 21.48232 Min.

Station	Arc	Face Chord Lengths		Defl.	Total Defl.
		0' Left	0' Right		
0+00.00	-	-	-	0'00'00"	0'00'00"
0+19.98	19.98'	15.69'	24.16'	7'09'13"	7'09'13"

Curve #2
 Curve Data Based on Centerline
 Rad. = 200' Delta = 25°51'37" Tangent = 45.92'
 Arc = 90.27' L.C. = 89.51' Def./Ft. = 8.59431 Min.

Station	Arc	Face Chord Lengths		Defl.	Total Defl.
		0' Left	0' Right		
0+19.98	-	-	-	0'00'00"	0'00'00"
0+25.00	5.02'	4.59'	5.45'	0'43'09"	0'43'09"
0+50.00	25.00'	22.86'	27.11'	3'34'51"	4'18'00"
0+75.00	25.00'	22.86'	27.11'	3'34'52"	7'52'52"
1+00.00	25.00'	22.86'	27.11'	3'34'51"	11'27'43"
1+10.25	10.25'	9.38'	11.12'	1'28'06"	12'55'49"

VALVE LOCATION TABLE

VALVE NUMBER	STREET	BASELINE STATION	OFFSET DISTANCE	OFFSET DIRECTION
1	Bradford	0+00.00	22.7'	Rt.
2	Bradford	2+03.55	26.0'	Rt.
3	Bradford	6+74.60	26.0'	Rt.
4	Capri	1+54.65	25.0'	Rt.
5	Capri	6+42.36	26.0'	Rt.
6	Capri	9+35.14	26.0'	Rt.

Roll type curb & gutter to be constructed on the pavement on this sheet. Top of curb elevation are given for full height curb.

Baughman R.F. Addition - Phase I
BRADFORD
 Sta. 0+00.00 to Sta. 4+00.00

Baughman Company, P.A. 315 Ellis St. Wichita, KS 67211 P 316-262-7271 F 316-262-0149
 ENGINEERING | SURVEYING | PLANNING | LANDSCAPE ARCHITECTURE

PROJECT NUMBER: 472-2019-085533
 DESIGN: AEG
 DRAWN: HW
 APPROVED: [Signature]
 DATE: 05/11/20

REVISIONS:

SCALE: Noted
 SHEET: **7 OF 28**

C:\Projects\R.F. Addition_1802\F317\Engineering\Phase I\STR\STR PLANS.dwg