

BENCH MARK LIST  $\oplus$  BM #201

CONTROL POINTS

101

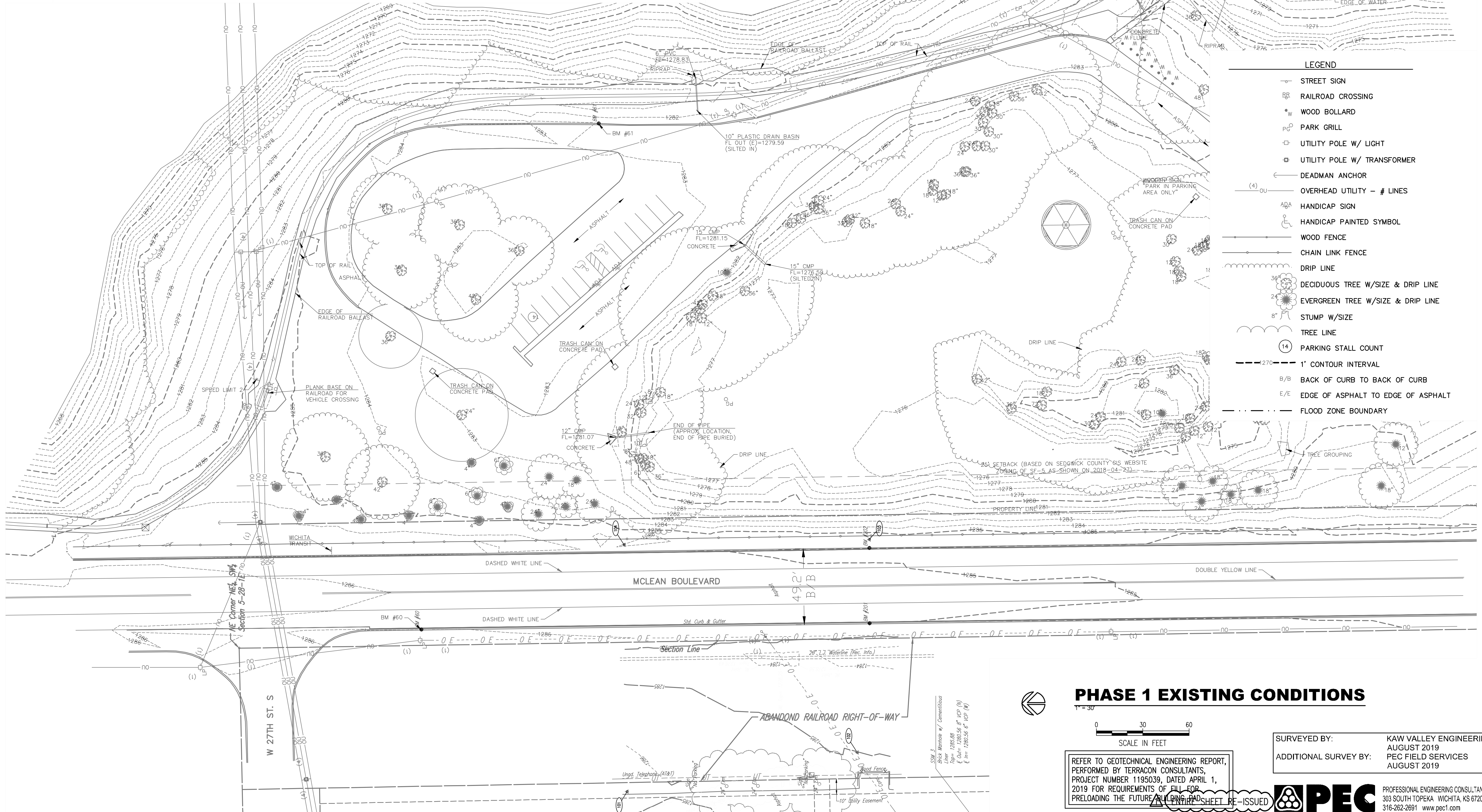
BM 201. ELEVATION: 1285.66 NAVD88  
CHISELED SQUARE ON TOP OF CURB, WEST SIDE OF McLEAN BLVD.  $\pm$  5'  
SOUTH OF THE NORTH FACE OF THE DUMPSTER FENCE EXTENDED,  
DIRECTLY WEST OF CHISELED SQUARE ON THE EAST SIDE OF McLEAN BLVD.  
(BMK 202).

BM 202. ELEVATION: 1285.37 NAVD88  
CHISELED SQUARE ON TOP OF CURB, EAST SIDE OF McLEAN BLVD.  $\pm$  5'  
SOUTH OF THE NORTH FACE OF THE DUMPSTER FENCE EXTENDED,  
DIRECTLY EAST OF CHISELED SQUARE ON THE WEST SIDE OF McLEAN BLVD.  
(BMK 201).

BM 60. ELEVATION: 1286.23 NAVD88  
CHISELED PLUS ON TOP OF CURB, WEST SIDE OF McLEAN BLVD, 6.5' EAST  
OF LIGHT POLE,  $\pm$  102' SOUTH OF CENTERLINE OF 27TH ST.

BM 61. ELEVATION: 1283.03 NAVD88  
CHISELED SQUARE ON BACK OF CURB, APPROXIMATELY 150' EAST OF  
McLEAN BLVD AND 150' SOUTH OF 27TH STREET, 25' NORTHEAST OF  
ASPHALT DRIVE DIVERGENCE.

- CP-101. N: 1,678,841.0710, E: 1,671,882.9610  
#4 BAR W/ PEC CP CAP, FLUSH W/ GROUND.  
NEAR SE CORNER OF PARKING LOT FOR LEASING CENTER  
18.75' W TO FLAG POLE.  
63.44' S TO 24" ELM TREE.  
1.6' W TO EAST EDGE OF ASPHALT EXIT ROAD.
- CP-102. N: 1,679,060.1720, E: 1,671,662.3770  
#4 BAR W/ PEC CP CAP, FLUSH W/ GROUND.  
LOCATED IN GRASS, SE OF LEASING CENTER.  
12.65' W TO NE CORNER OF DUMPSTER FENCE.  
33.2' NW TO TELEPHONE PEDESTAL.
- CP-103. N: 1,678,805.4890, E: 1,671,625.0280  
#4 BAR W/ PEC CP CAP, FLUSH W/ GROUND.  
5.41' W TO CHISELED SQUARE ON TOP OF CURB.  
2.6' E TO CHAIN LINK FENCE.  
5'  $\pm$  N TO NORTH FACE OF DUMPSTER FENCE TO THE WEST EXTENDED.
- CP-104. N: 1,678,805.4890, E: 1,671,625.0280  
#4 BAR W/ PEC CP CAP, FLUSH W/ GROUND.  
4.35' W TO EAST BACK OF CURB.  
3.71' E TO CHAIN LINK FENCE.  
178' W TO FLAG POLE.



SPANGENBERG PHILLIPS TICE  
**ARCHITECTURE**  
 121 N Mead Ste 201 Wichita KS 67202  
 T 316.267.4002 F 316.267.1509  
 www.sptarchitecture.com

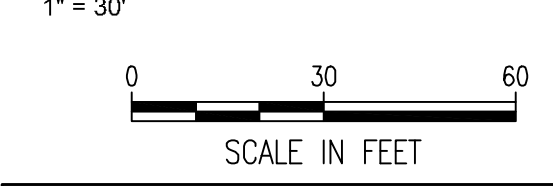
**WATSON PARK**  
**EVENT CENTER**

3022 S McLEAN BLVD, WICHITA, KS 67217

**CITY REVIEW COMMENTS FOR CONSTRUCTION**  
 30 MARCH 20

V-101(P1)

**PHASE 1 EXISTING CONDITIONS**



REFER TO GEOTECHNICAL ENGINEERING REPORT,  
 PERFORMED BY TERRACON CONSULTANTS,  
 PROJECT NUMBER 1195039, DATED APRIL 1,  
 2019 FOR REQUIREMENTS OF FILL FOR  
 PRELOADING THE FUTURE RAILCROSS SHEET RE-ISSUED

SURVEYED BY: KAW VALLEY ENGINEERING  
 AUGUST 2019  
 ADDITIONAL SURVEY BY: PEC FIELD SERVICES  
 AUGUST 2019

**PEC** PROFESSIONAL ENGINEERING CONSULTANTS, P.A.  
 303 SOUTH TOPEKA WICHITA, KS 67202  
 316-262-2691 www.pec1.com

Save: 03-25-2020, 11:42:32 AM by BFT  
 Plot: Scale: 1:1 03-30-2020 4:31:44 PM by BFT  
 U:\Wichita-Civil\2019\197042\010\Drawings\PLANS\197042-010-P1-V-101