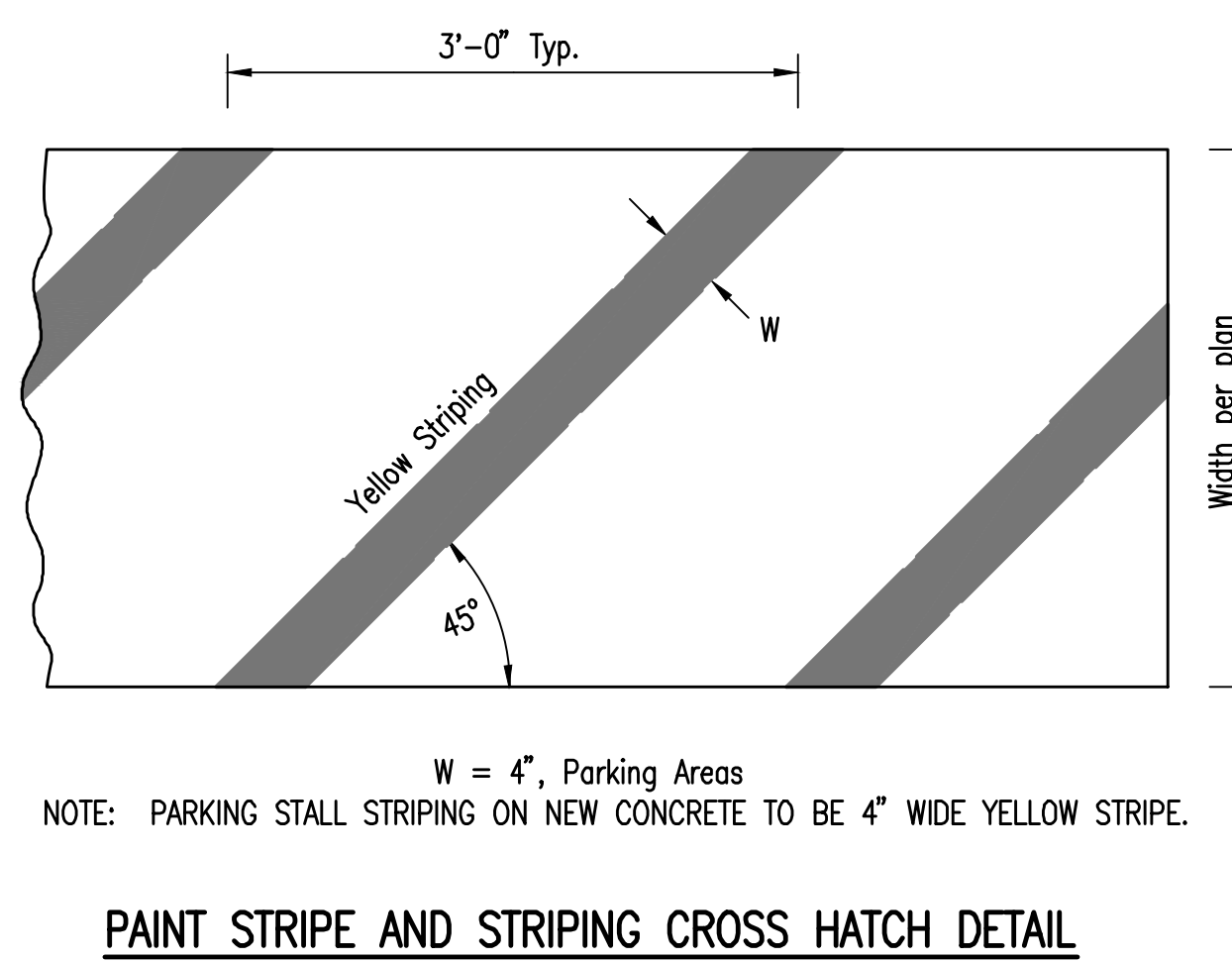
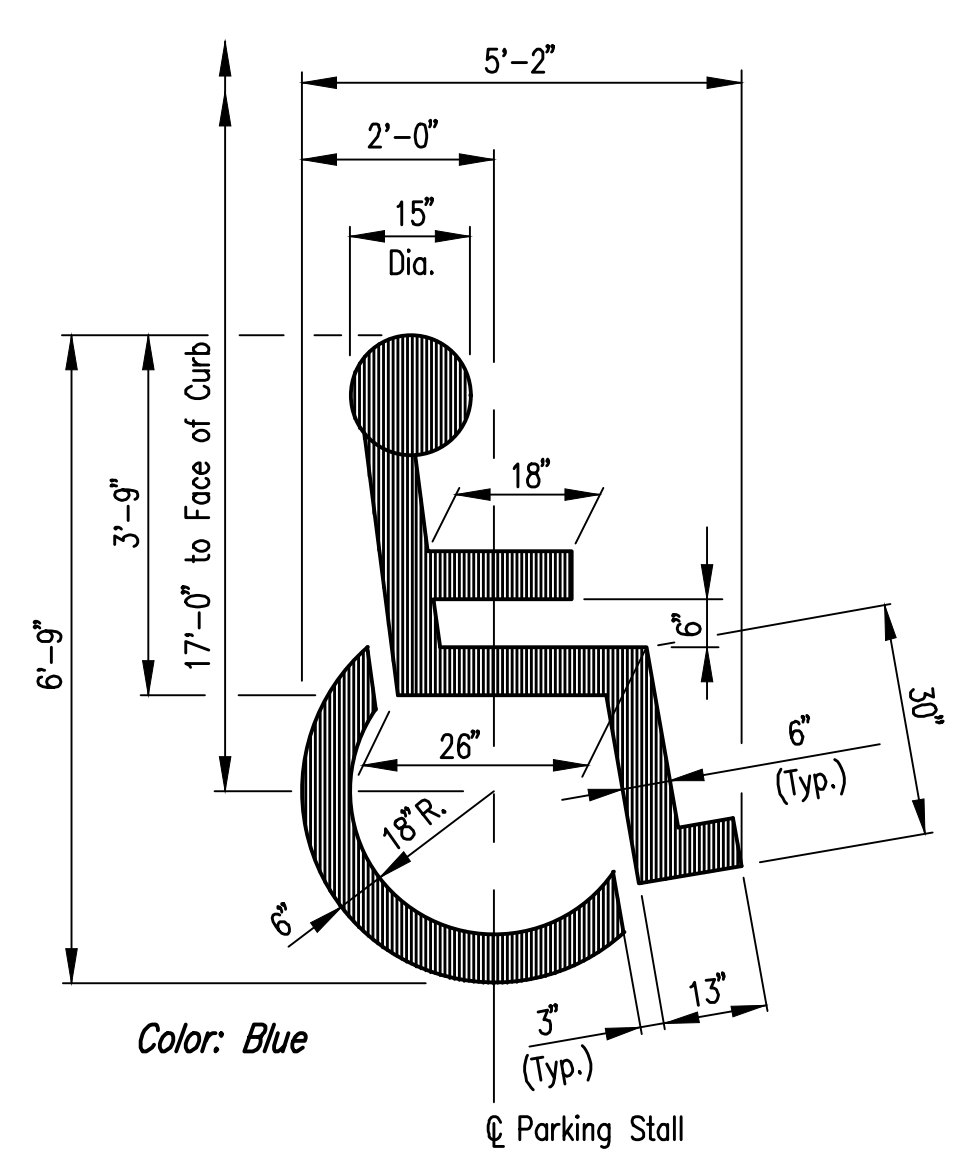


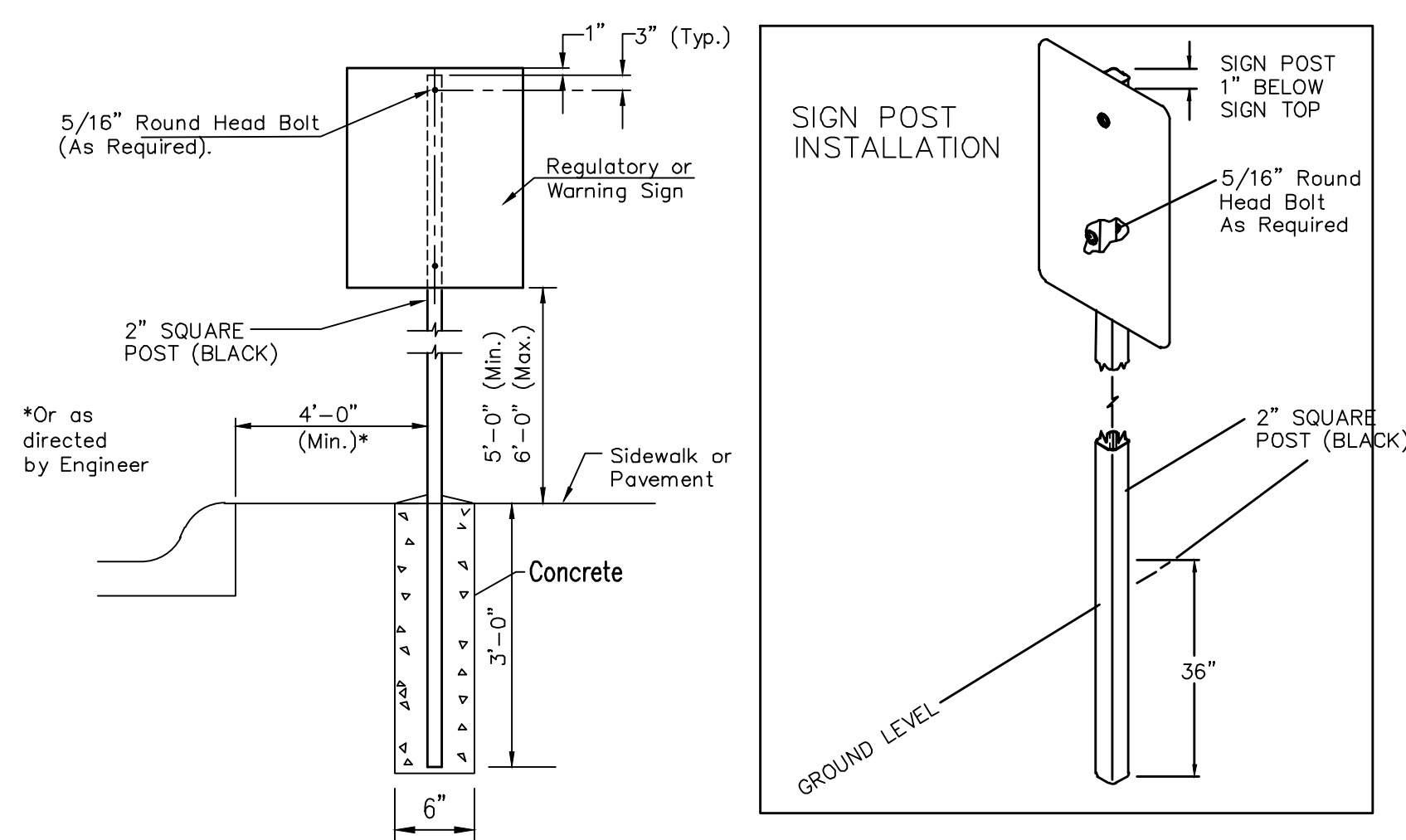
Saved: 03-30-2020 4:23:17 PM by BRT
 Plot: Sheet: 1:1 03-30-2020 4:35:50 PM by BET
 U:\Wichita-Civil\2019\197042\010\Drawings\PLANS\197042-010-P2-C-501



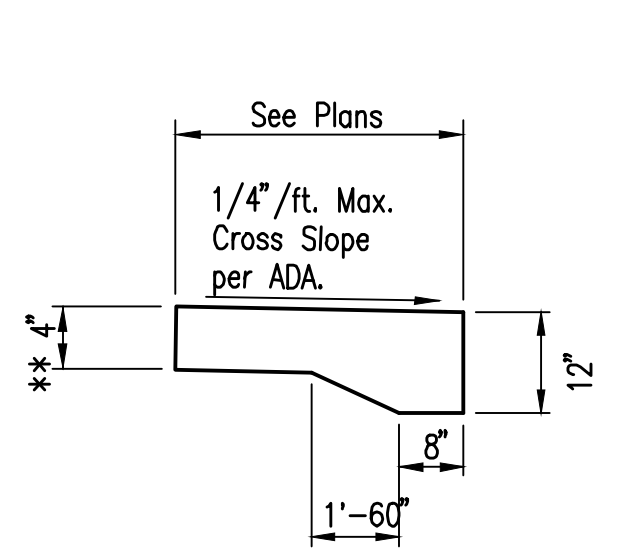
PAINT STRIPE AND STRIPING CROSS HATCH DETAIL



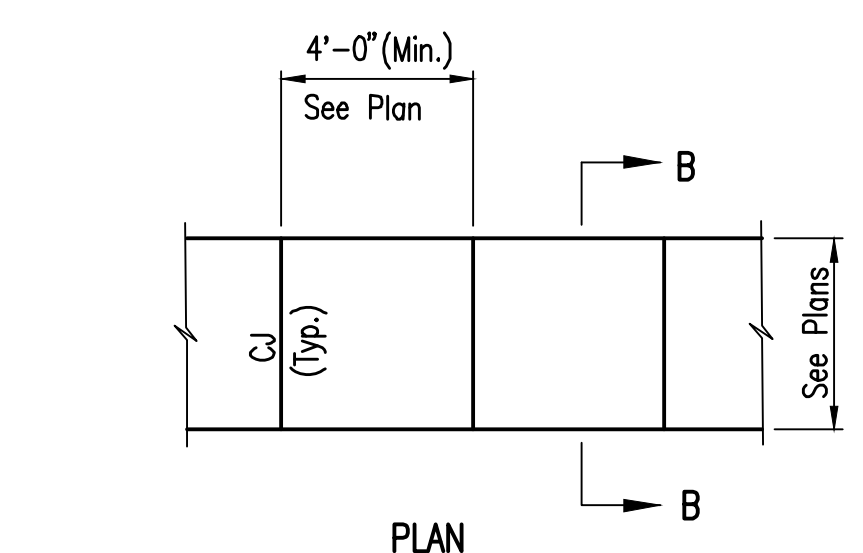
SYMBOL OF ACCESSIBILITY



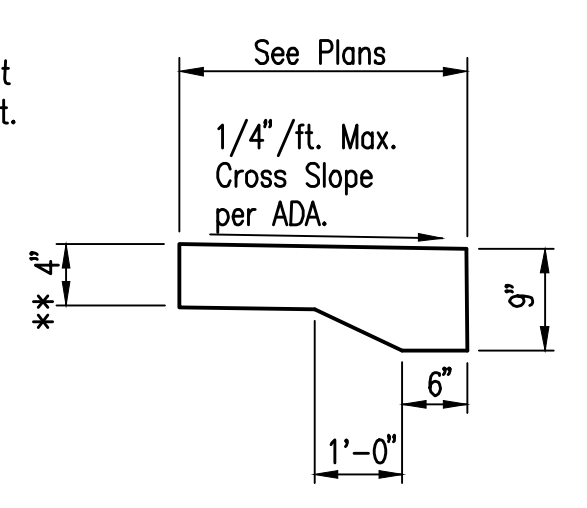
ADA SIGN MOUNTING INSTALLATION



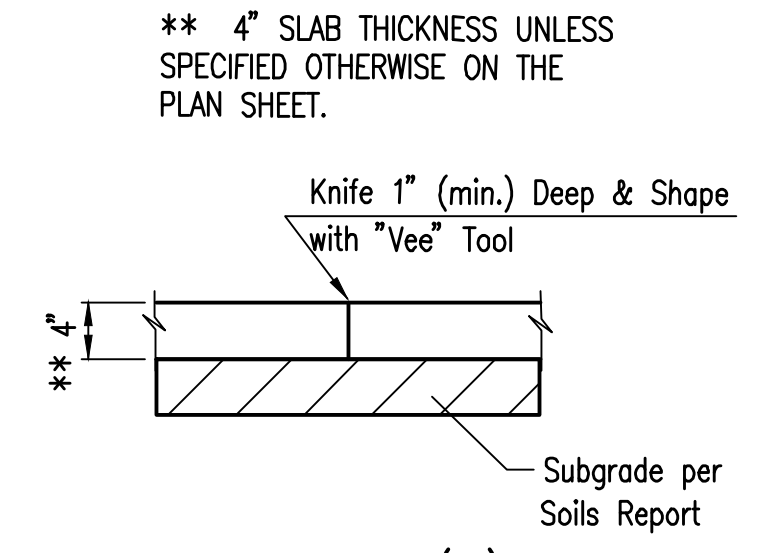
SECTION B-B ***
NOTE: 12" Thickened edge only required at bridge abutment. Coordinate with abutment. Note walk to set on abutment wall



PLAN

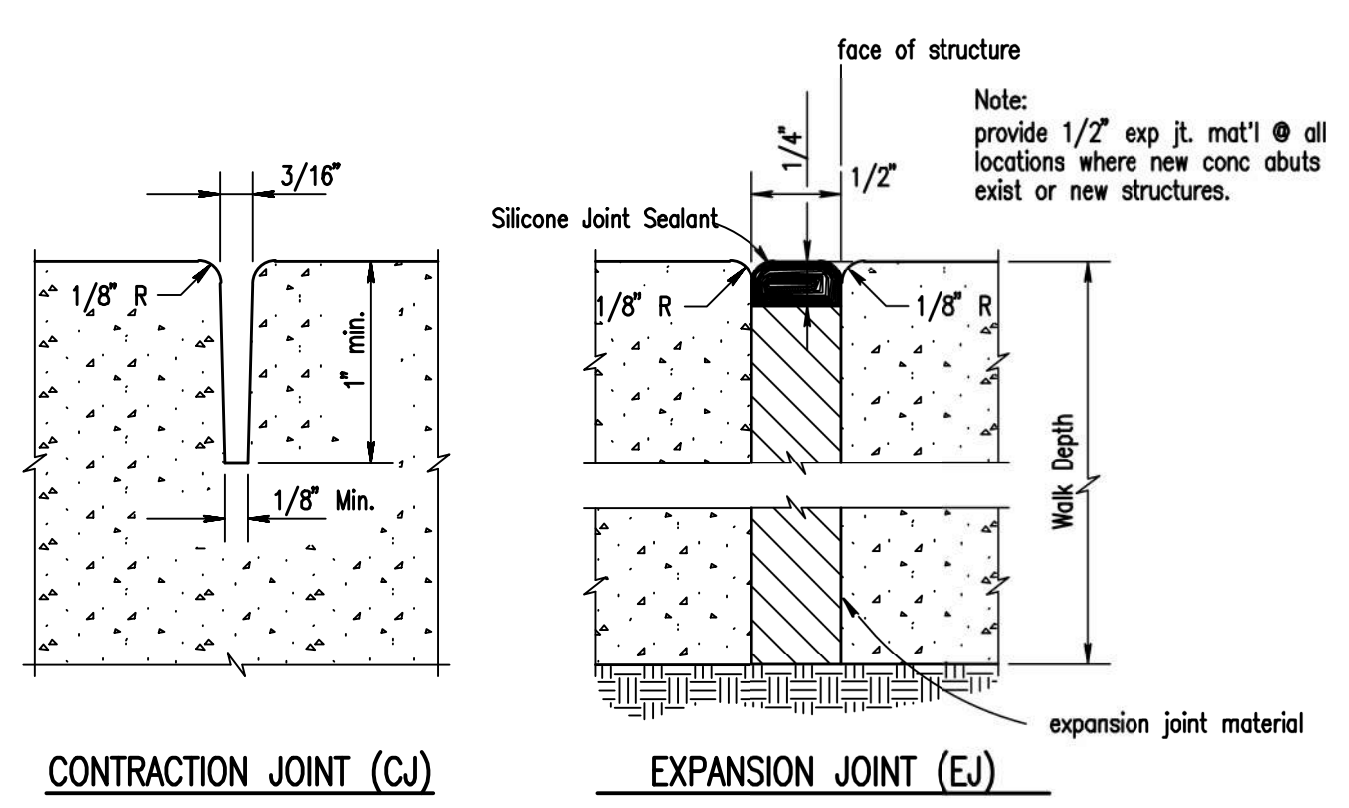


SECTION B-B
NOTE: Thickened edge only required at abutment to building or wall.

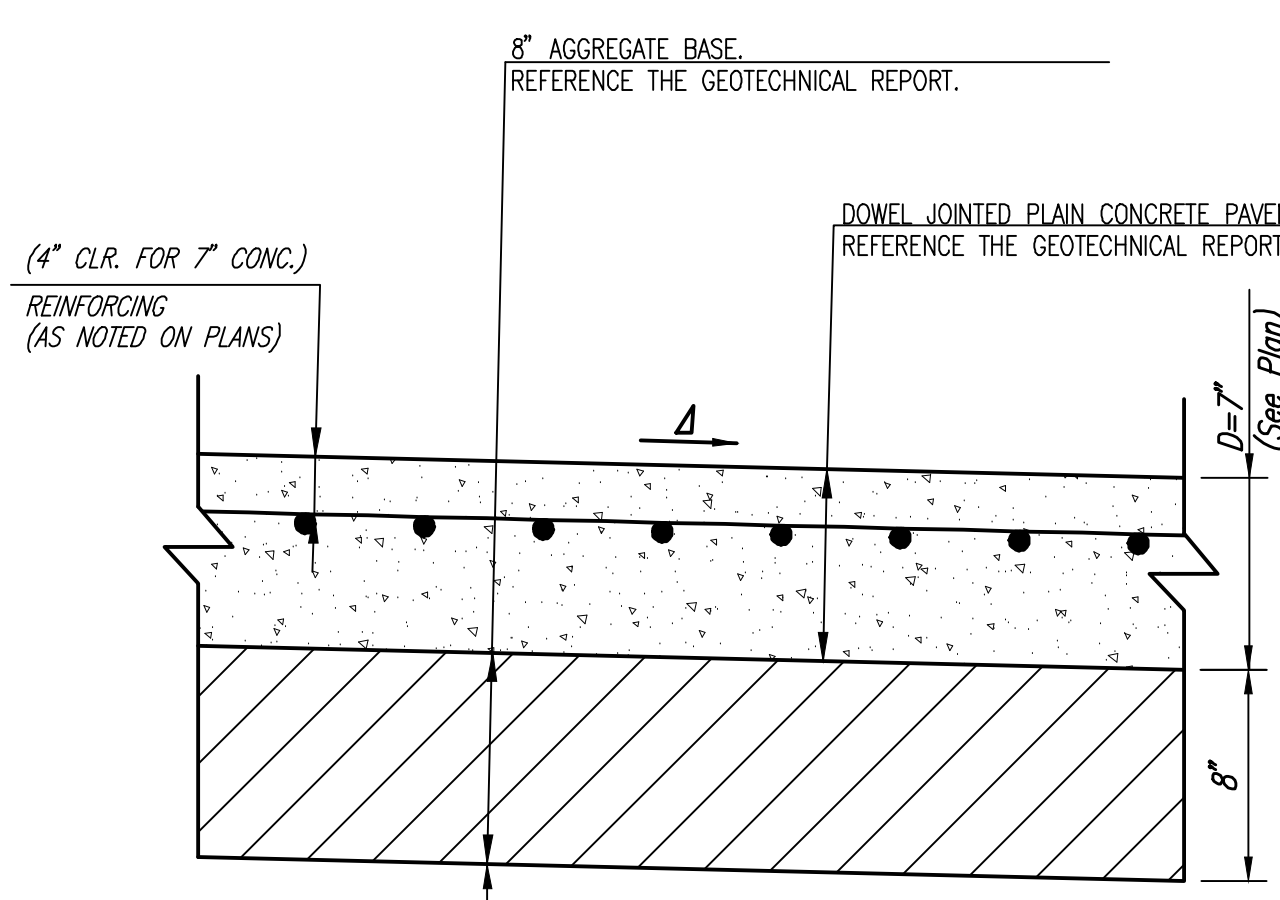


CONTRACTION JOINT (Cj)
Note: No sawn contraction joints will be allowed

CONCRETE WALK DETAILS

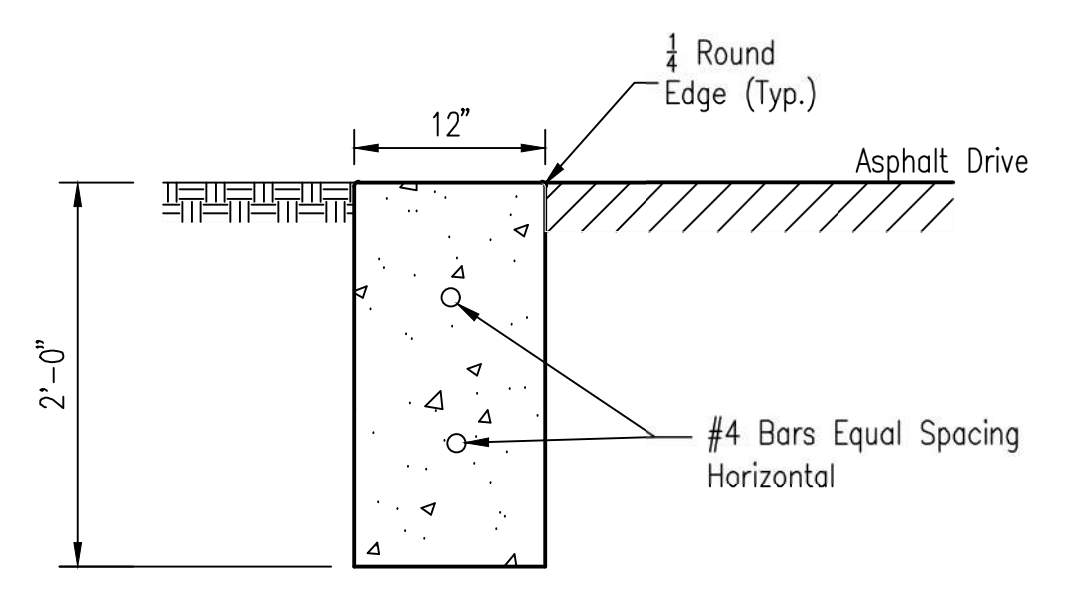


CONCRETE WALK EXPANSION JOINT DETAILS



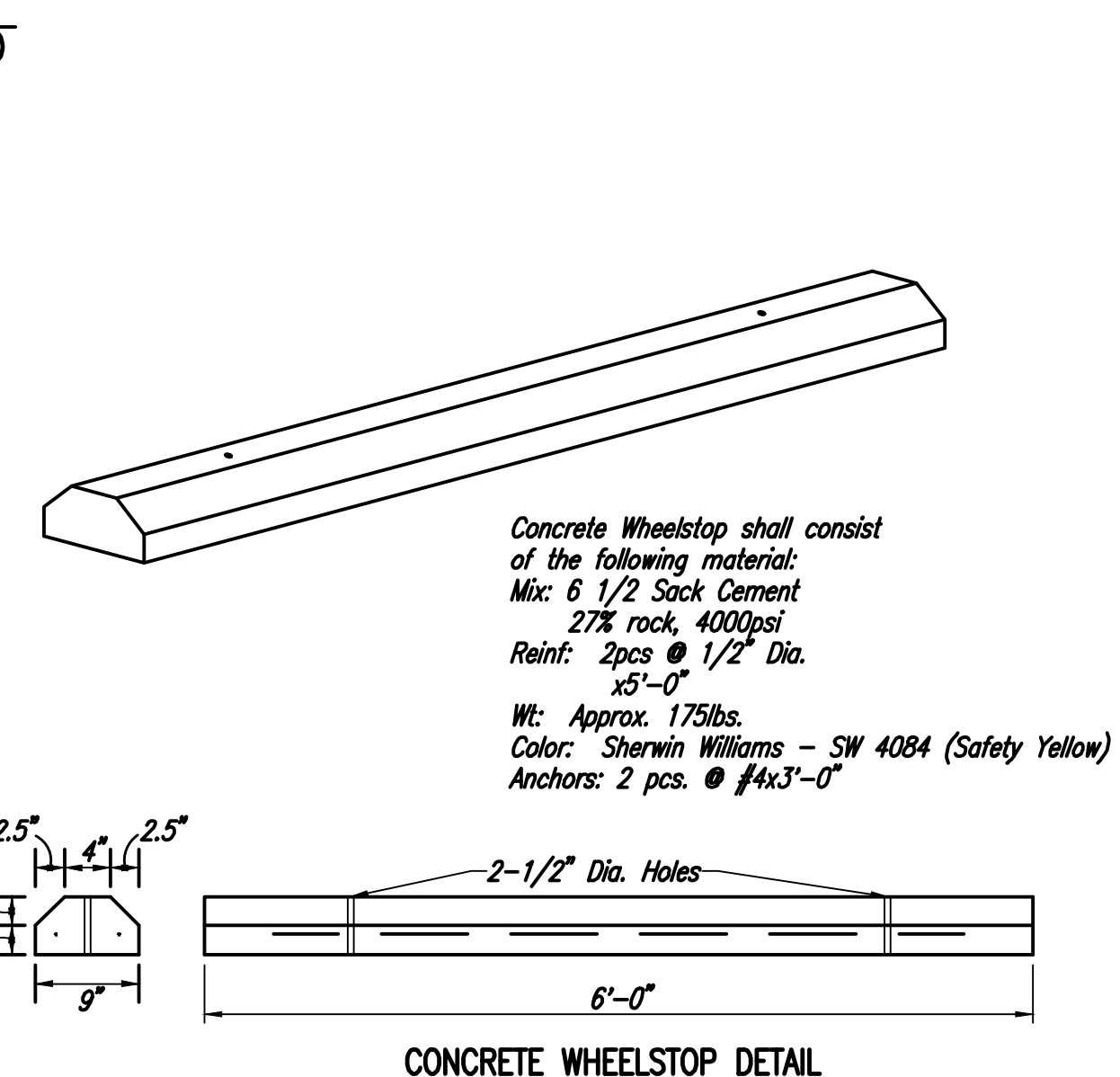
- NOTES:
1. STABILIZED SUBGRADE SHALL BE EXTENDED TO 1' BEYOND THE LIMITS OF ALL PAVING, EXCEPT WHERE ADJACENT TO EXISTING PAVING.
 2. PORTLAND CEMENT CONCRETE MEETS CITY OF WICHITA STANDARD SPECIFICATIONS FOR CONSTRUCTION.

CONCRETE PAVEMENT TYPICAL SECTION

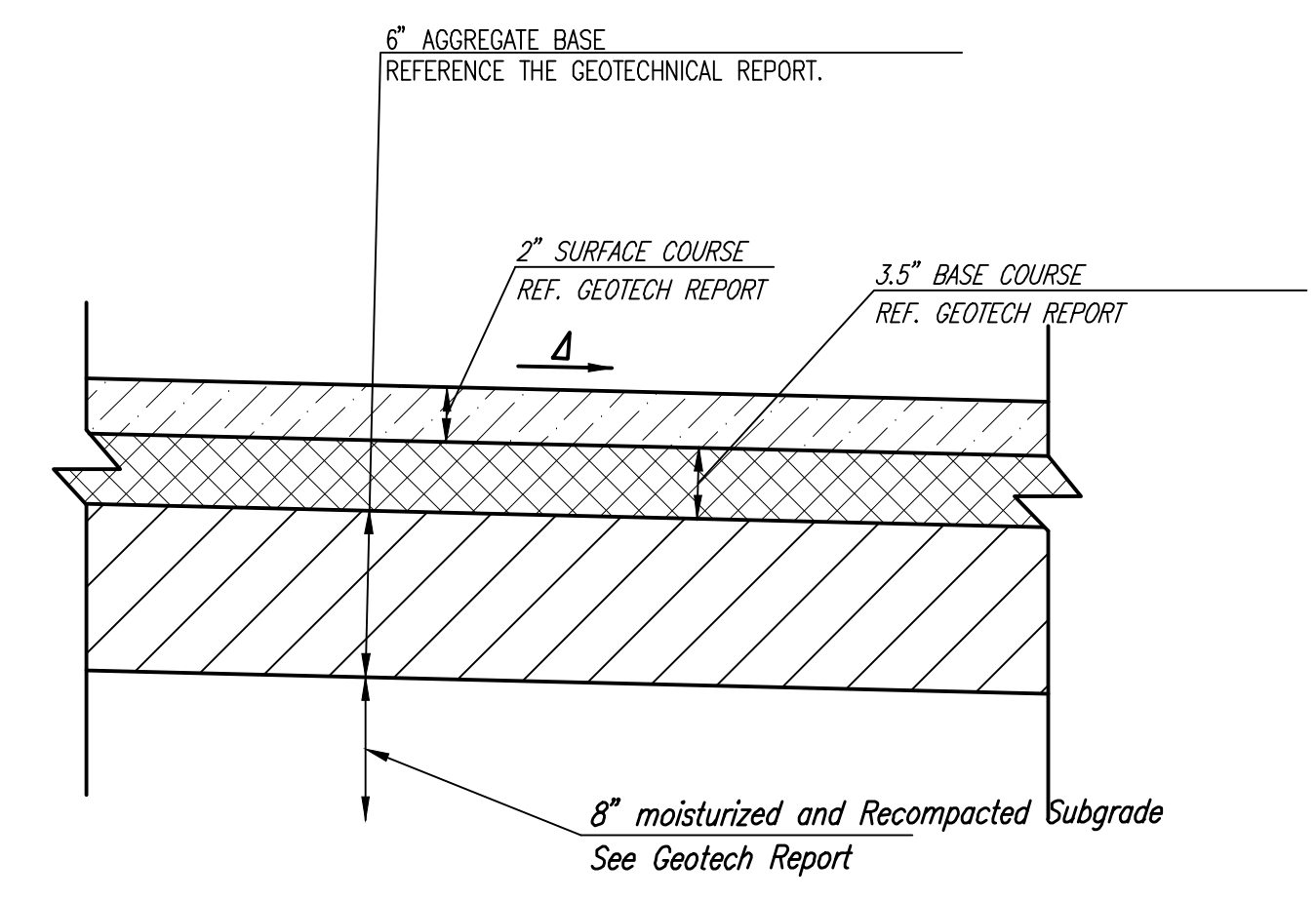


12" CONCRETE RIBBON CURB DETAIL

- NOTE:
1. Construct Vertical Expansion Joint Every 100 L.F.
 2. Contractor Required to Form Top 6" of Concrete Curb



CONCRETE WHEELSTOP DETAIL



5 1/2" ASPHALT PAVEMENT

See Grading Plan for Pavement Slopes

1 PHASE 2 PAVING DETAILS