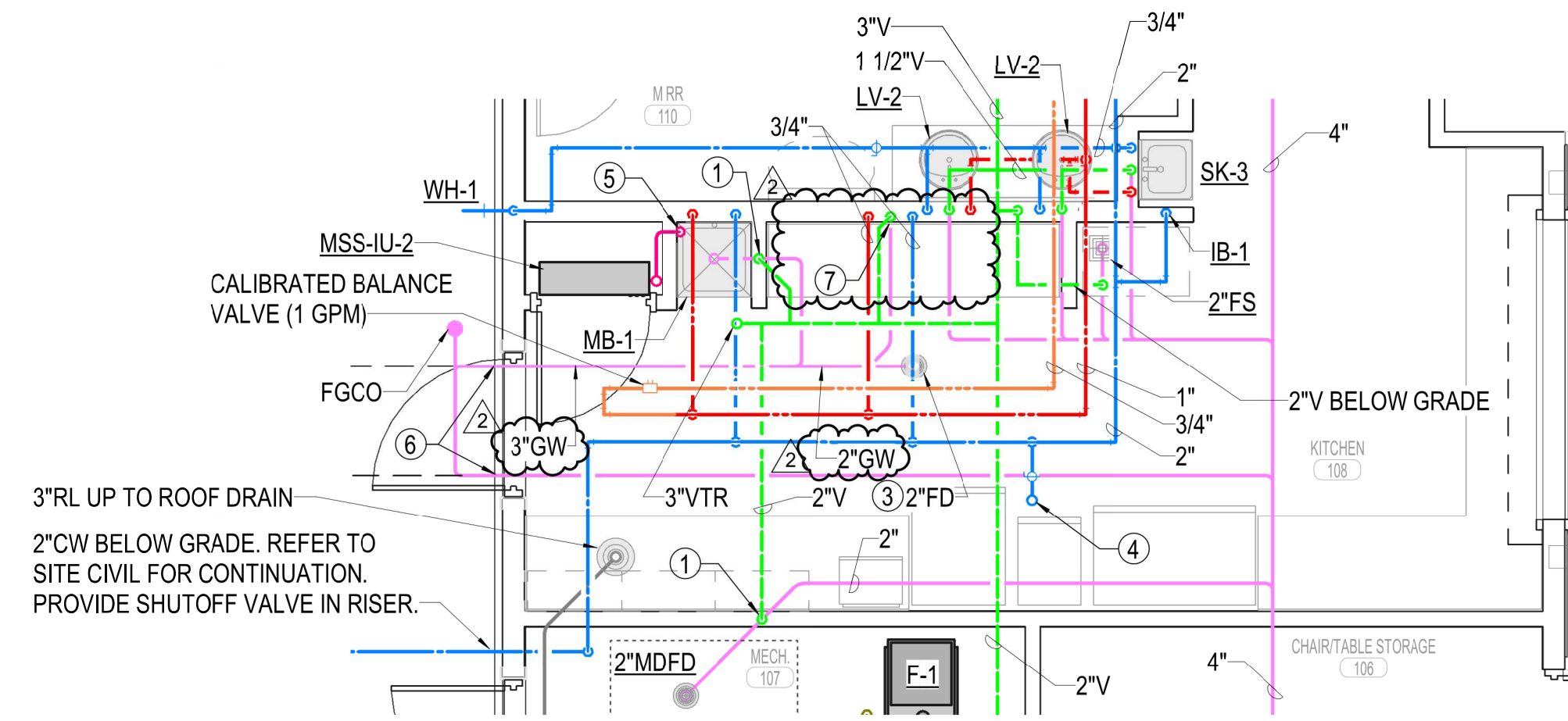
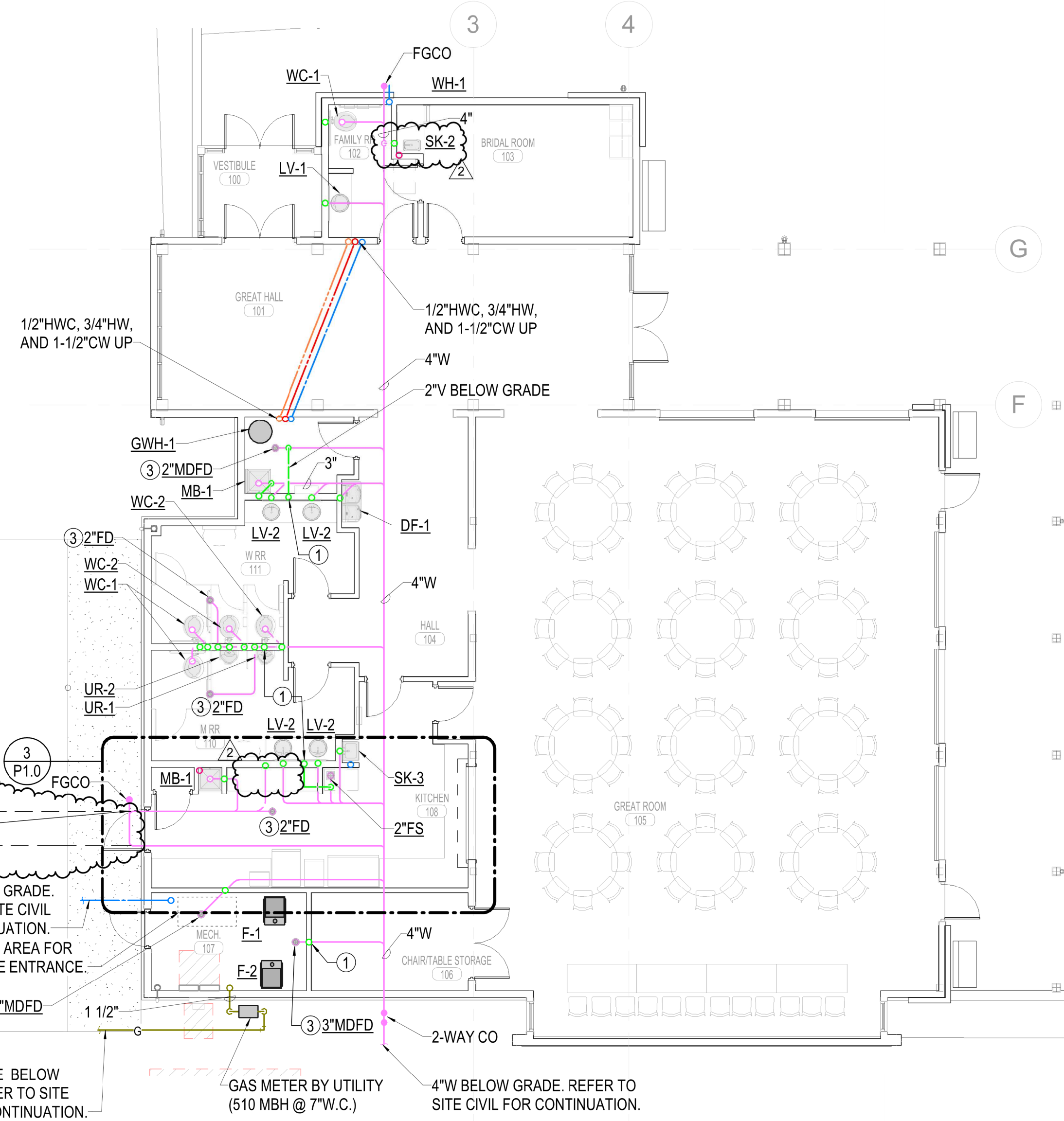


4/13/2020 6:06:48 AM
 BIM 360://198014-003 - Watson Park Events Center New Building/198014-003-MASTER MECH-R19.rvt

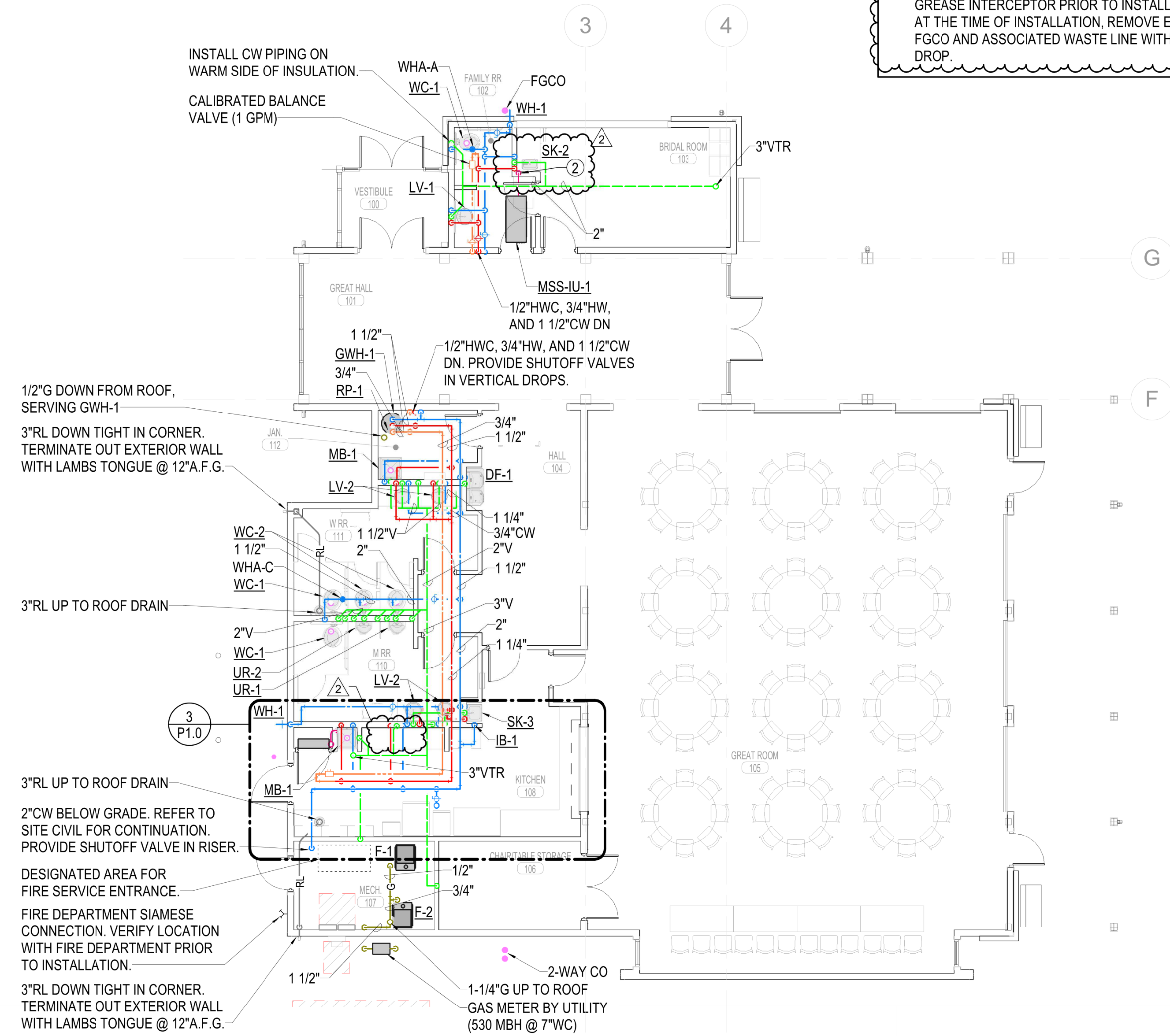


3 ENLARGED KITCHEN PLUMBING PLAN
 1/4" = 1'-0"

- # PLAN NOTES**
- 2"V UP IN WALL.
 - CONNECT 3/4"CD SERVING MSS-IU-1 INTO SK-2 CONDENSATE DRAIN FITTING. REF. DETAIL 8/P7.0.
 - PROVIDE DRAIN WITH TRAP GUARD. REF. DETAIL 6/P7.0.
 - 1"CW UP TO ROOF HYDRANT. REF. DETAIL 7/P7.0. ROUTE COPPER DRAIN LINE TO FLOOR DRAIN IN MECHANICAL ROOM AND TERMINATE WITH AIR GAP.
 - TERMINATE 3/4"CD SERVING MSS-IU-2 OVER MOP SINK.
 - CONTRACTOR SHALL ACCURATELY LOCATE WHERE WASTE PIPING EXITS THE BUILDING ON AS-BUILT DRAWINGS FOR CONNECTION OF POTENTIAL FUTURE GREASE INTERCEPTOR. PROVIDE 18" OF DROP BETWEEN WHERE WASTE EXITS BUILDING AND ENTERS BUILDING TO ACCOMMODATE POTENTIAL FUTURE GREASE INTERCEPTOR.
 - PREPARE FOR CONNECTION TO FUTURE SINK. PROVIDE 3/4"CW & 3/4"HW TO QUARTER TURN BALL VALVES. PROVIDE 2"W AND 1-1/2"V UP/DOWN IN WALL AND CAP WITHIN CABINET.
 - FUTURE 4" GREASE WASTE OUT TO GREASE INTERCEPTOR. VERIFY SIZE AND LOCATION OF GREASE INTERCEPTOR PRIOR TO INSTALLATION. AT THE TIME OF INSTALLATION, REMOVE EXISTING FGCO AND ASSOCIATED WASTE LINE WITH 18" DROP.



1 BELOW FLOOR PLUMBING PLAN
 1/8" = 1'-0"



2 ABOVE FLOOR PLUMBING PLAN
 1/8" = 1'-0"

