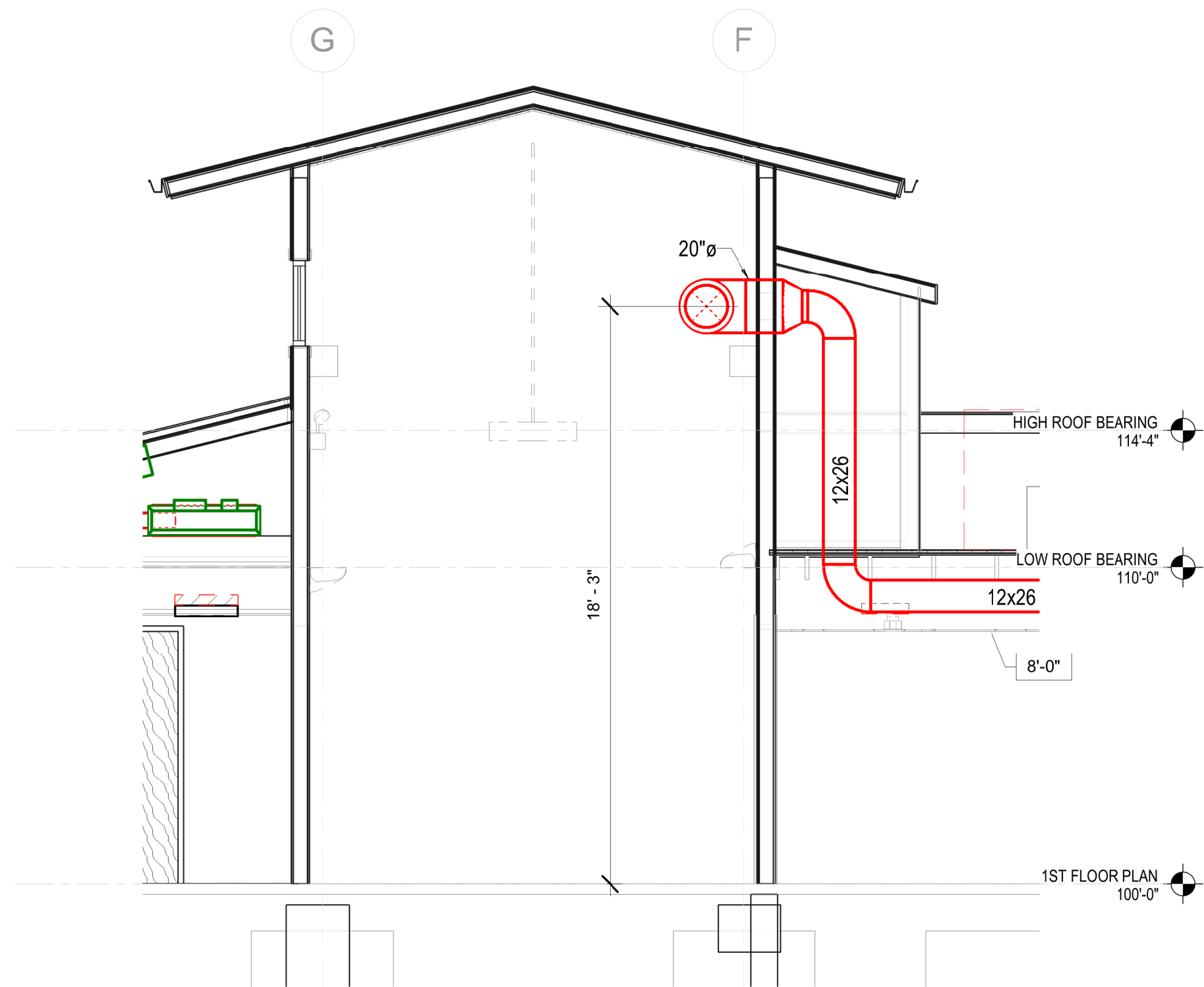
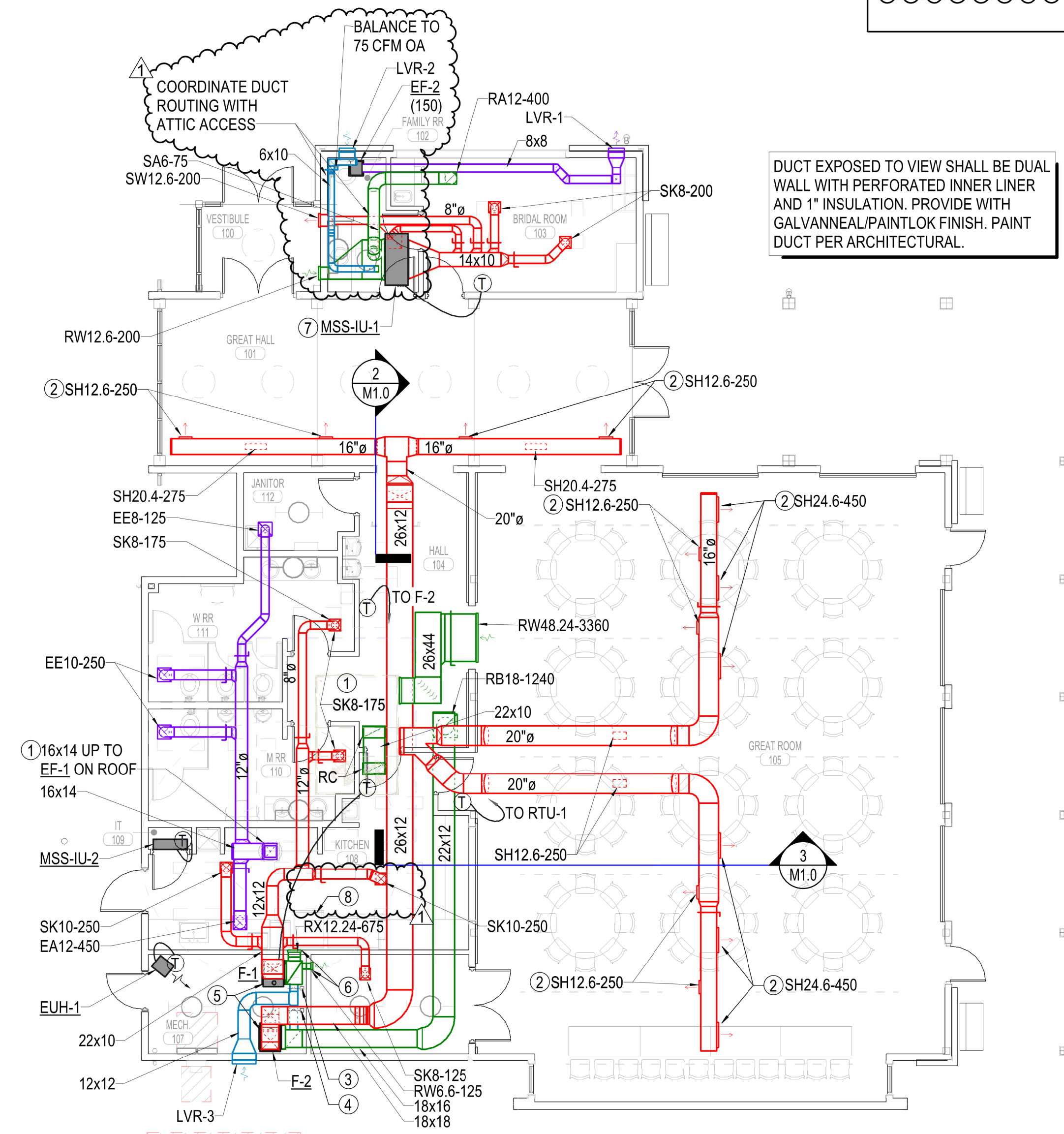


**3 SECTION THROUGH GREAT ROOM DUCT**  
 1/4" = 1'-0"



**2 SECTION THROUGH GREAT HALL DUCT**  
 1/4" = 1'-0"



**1 HVAC 1ST FLOOR PLAN**  
 1/8" = 1'-0"

- PLAN NOTES**
- MECHANICAL EQUIPMENT ON ROOF.
  - ANGLE DUCT MOUNTED DIFFUSER DOWN 45°.
  - 120V MOTORIZED DAMPER INTERLOCKED WITH F-1. DAMPER SHALL BE OPEN WHEN FAN IS ENERGIZED. BALANCE TO 200 CFM OA.
  - 120V MOTORIZED DAMPER INTERLOCKED WITH F-2. DAMPER SHALL BE OPEN WHEN FAN IS ENERGIZED. BALANCE TO 310 CFM OA.
  - ROUTE FURNACE FLUE AND COMBUSTION AIR TO CONCENTRIC VENT LOCATION INDICATED ON MECHANICAL ROOF PLAN M2.0. SIZE PER MANUFACTURER'S REQUIREMENTS.
  - MOUNT TOP OF GRILLE 6" BELOW CEILING.
  - ROUTE REFRIGERANT PIPING BETWEEN MSS-IU-1 AND MSS-OU-1 CONCEALED OVER THE GREAT HALL, WITHIN THE EXTERIOR WALLS AND BELOW THE ROOF. COORDINATE ROUTING REQUIREMENTS WITH ARCHITECT.
  - THE OVEN WILL NOT PRODUCE GREASE OR SMOKE, AND THE HEAT AND MOISTURE LOADS FROM THIS APPLIANCE HAVE BEEN INCORPORATED IN THE HVAC DESIGN TO MEET 2018 INTERNATIONAL MECHANICAL CODE 507.3.

DUCT EXPOSED TO VIEW SHALL BE DUAL WALL WITH PERFORATED INNER LINER AND 1" INSULATION. PROVIDE WITH GALVANNEAL/PAINTLOK FINISH. PAINT DUCT PER ARCHITECTURAL.

