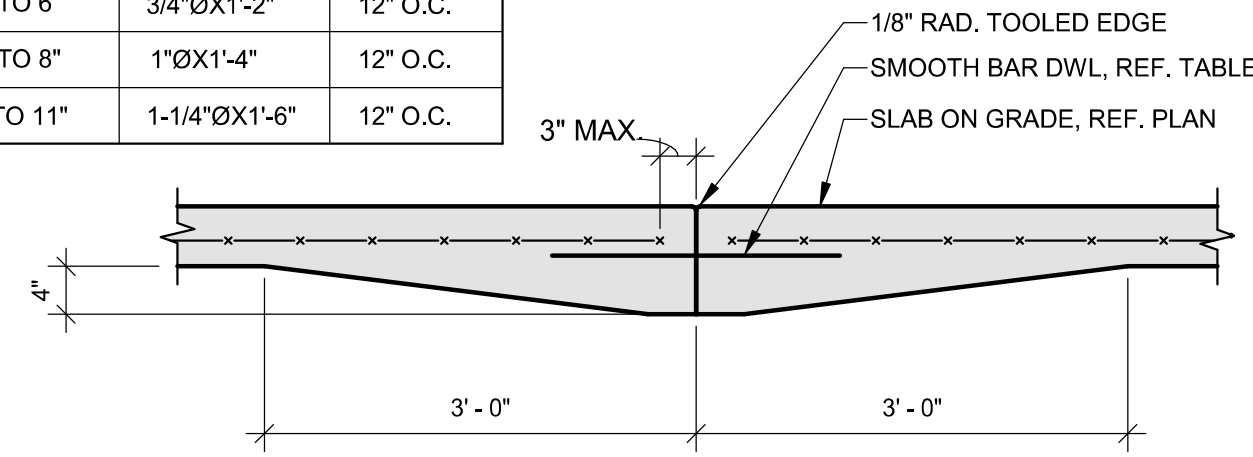


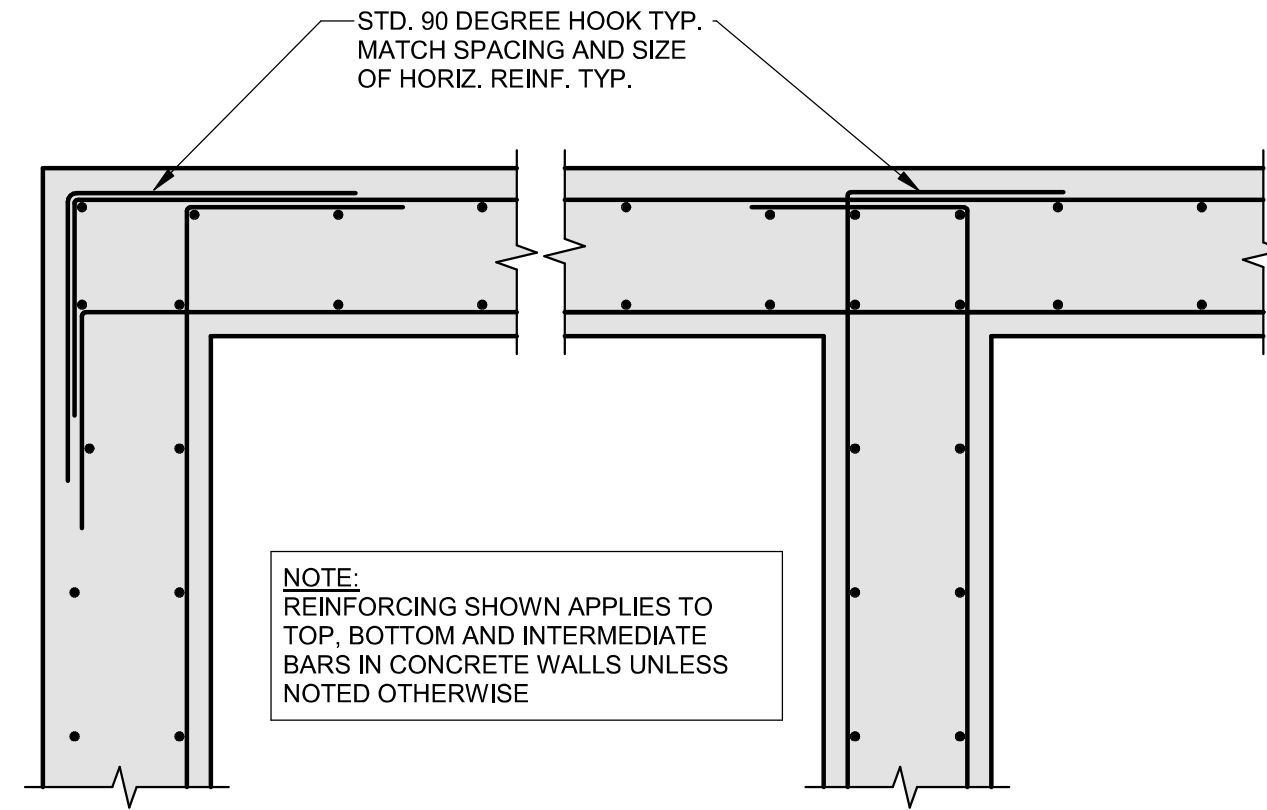
WWF SAWN JOINT (SJ) DETAIL

SMOOTH BAR DOWELS		
SLAB DEPTH	DOWEL DIMENSIONS	DOWEL SPACING
4" TO 6"	3/4"ØX1'-2"	12" O.C.
7" TO 8"	1"ØX1'-4"	12" O.C.
9" TO 11"	1-1/4"ØX1'-6"	12" O.C.

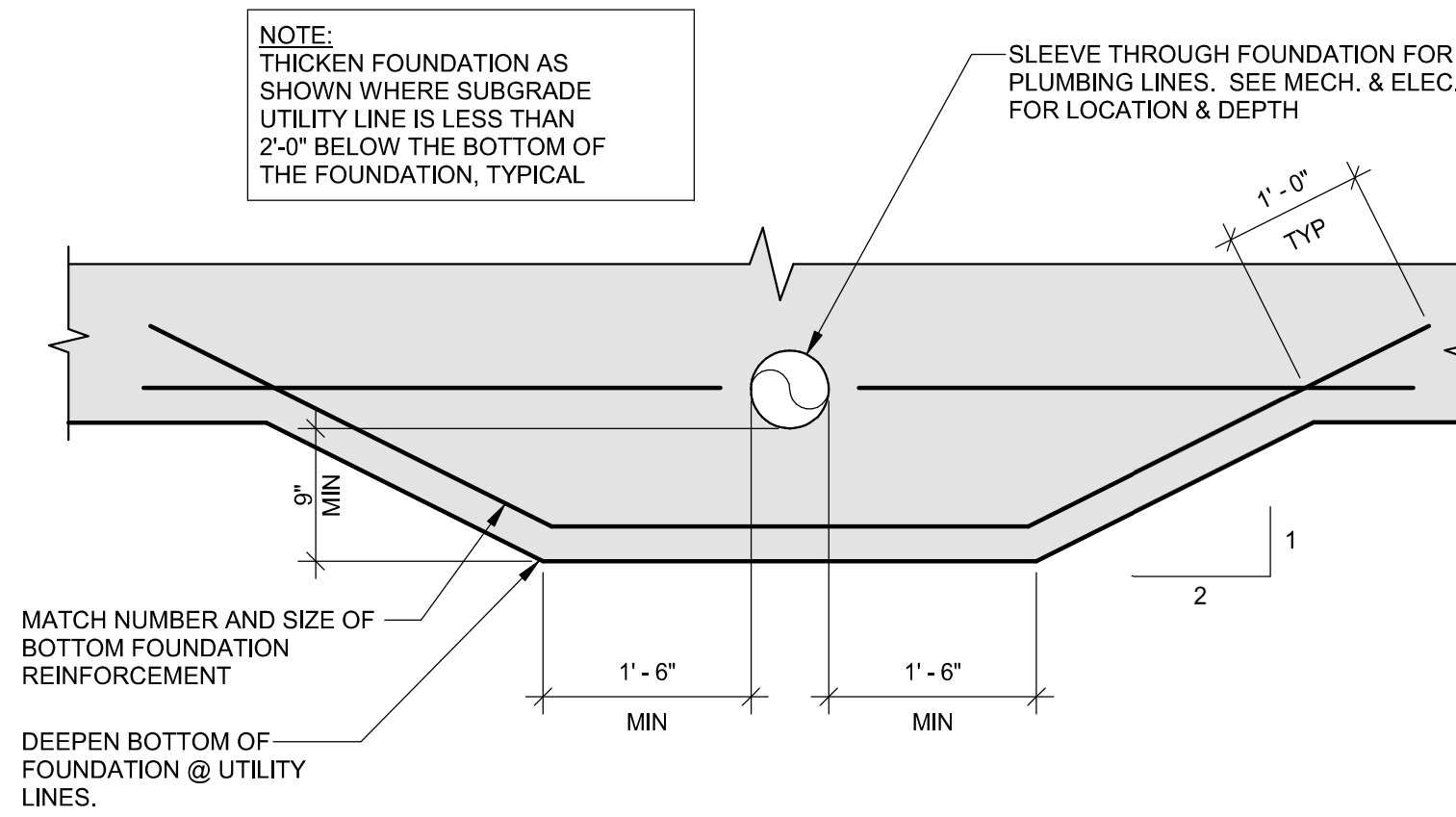


WWF CONSTRUCTION JOINT (CJ) DETAIL

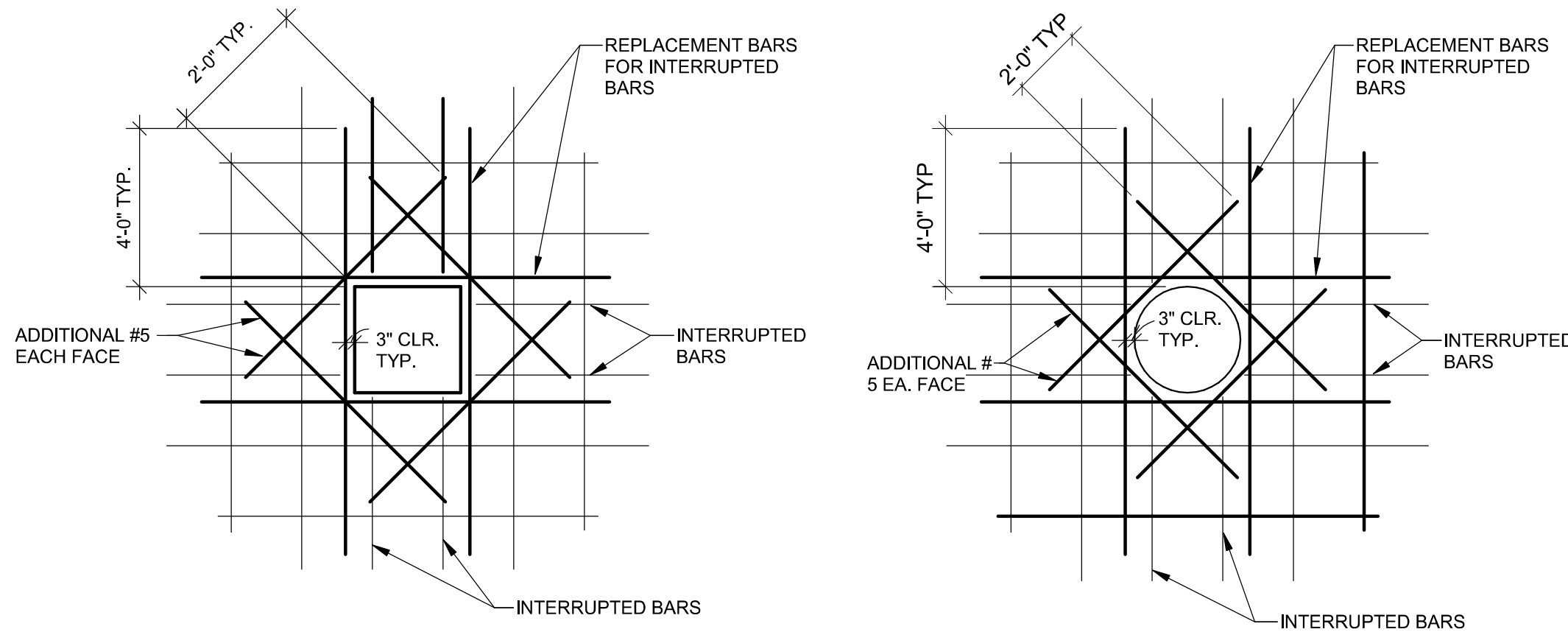
1 TYPICAL SLAB ON GRADE JOINT DETAIL
NO SCALE



2 TYPICAL CORNER AND INTERSECT. REINF.
NO SCALE

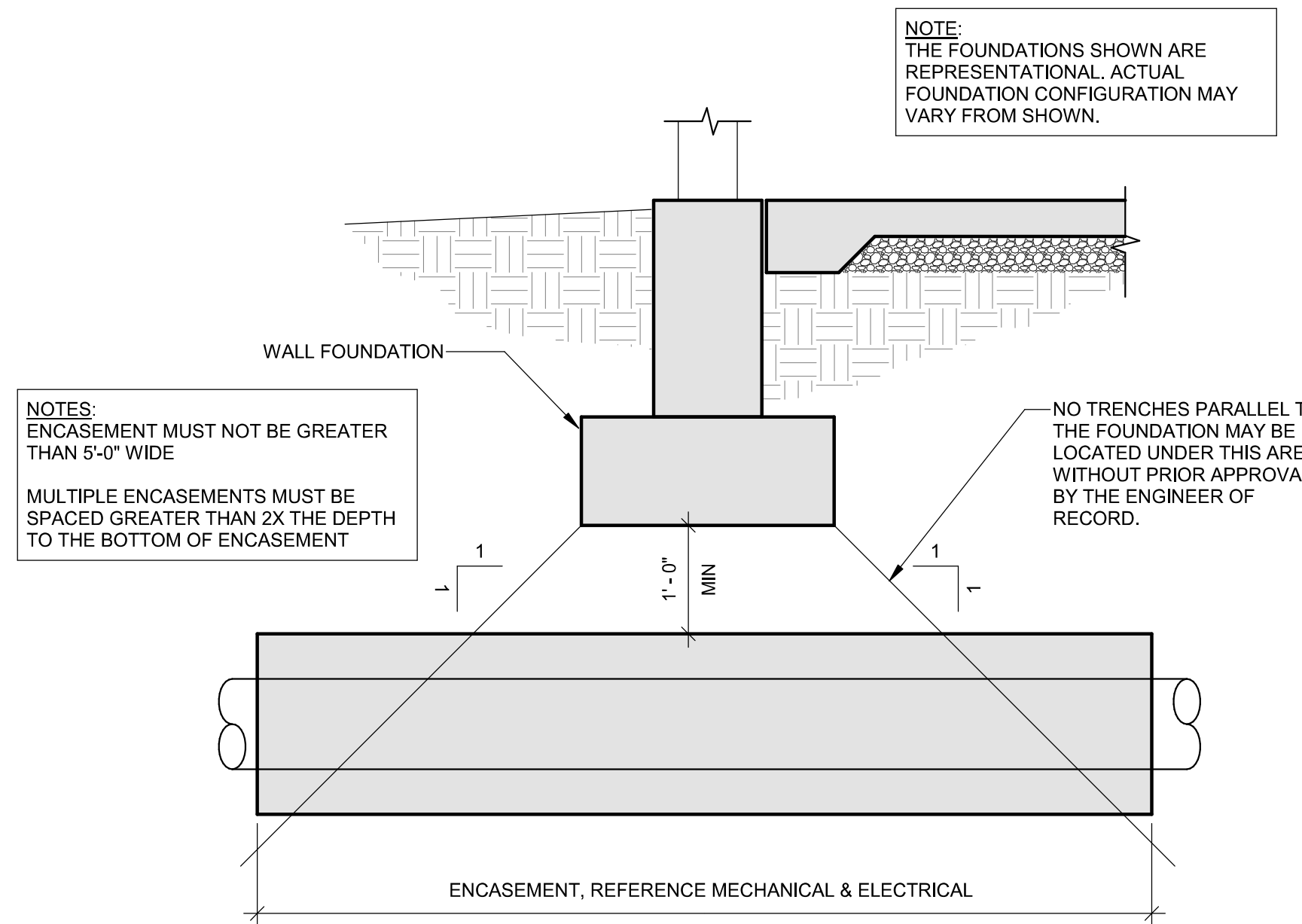


3 TYPICAL THICKENED FOUNDATION DETAIL
NO SCALE



- NOTES:
- USE THIS DETAIL FOR ALL OPENINGS GREATER THAN 8" IN CONCRETE WALLS AND SLABS, PROVIDE (2) #5 ON DIAGONAL AT EACH CORNER AS SHOWN. EXTEND BARS 2'-0" PAST OPENING. REPLACE ALL VERTICAL AND HORIZONTAL BARS INTERRUPTED BY THE OPENING WITH AN EQUAL NUMBER AND SIZE BARS EVENLY DIVIDED ON EACH SIDE OF THE OPENING UNLESS NOTED OTHERWISE.
 - REFER TO PLANS FOR ALL OPENING LOCATIONS.

4 TYPICAL SLAB/WALL OPENINGS
NO SCALE



5 TYPICAL ENCASEMENT OF UTILITIES UNDER FOUNDATION
NO SCALE

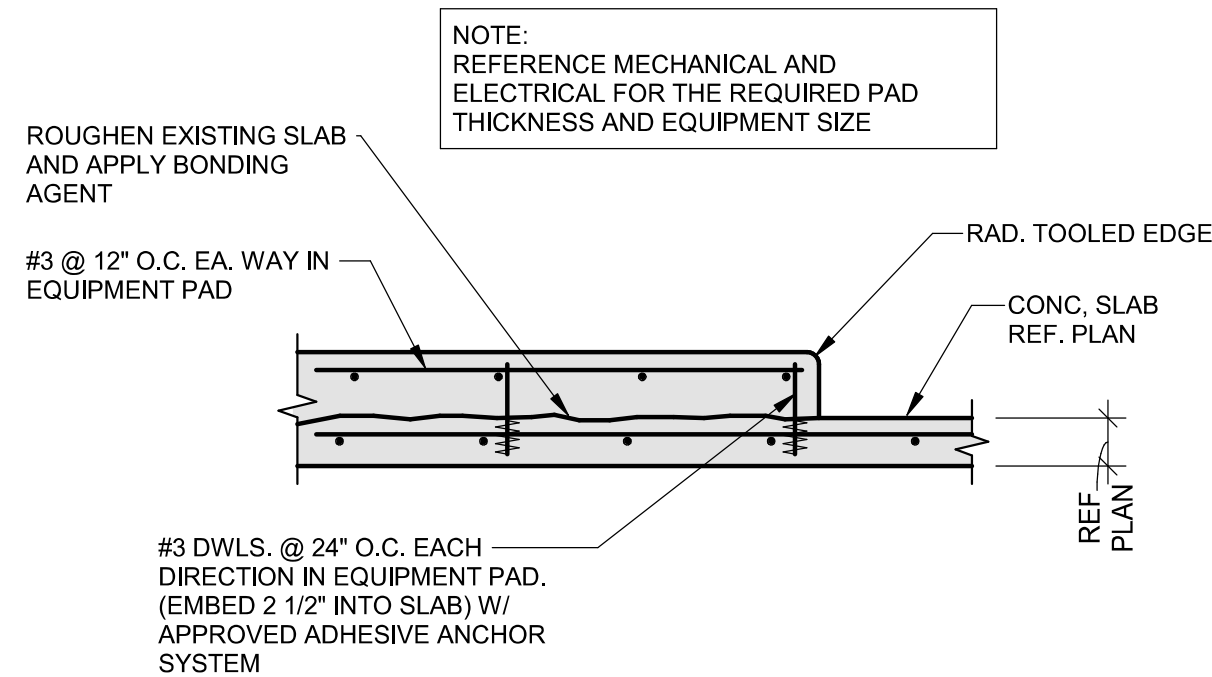
NOTE: IF THESE CONDITIONS CANNOT BE MET, THE CONTRACTOR SHALL NOTIFY THE ENGINEER BEFORE PROCEEDING

CONCRETE REINFORCEMENT LAPS AND EMBEDMENT LENGTHS

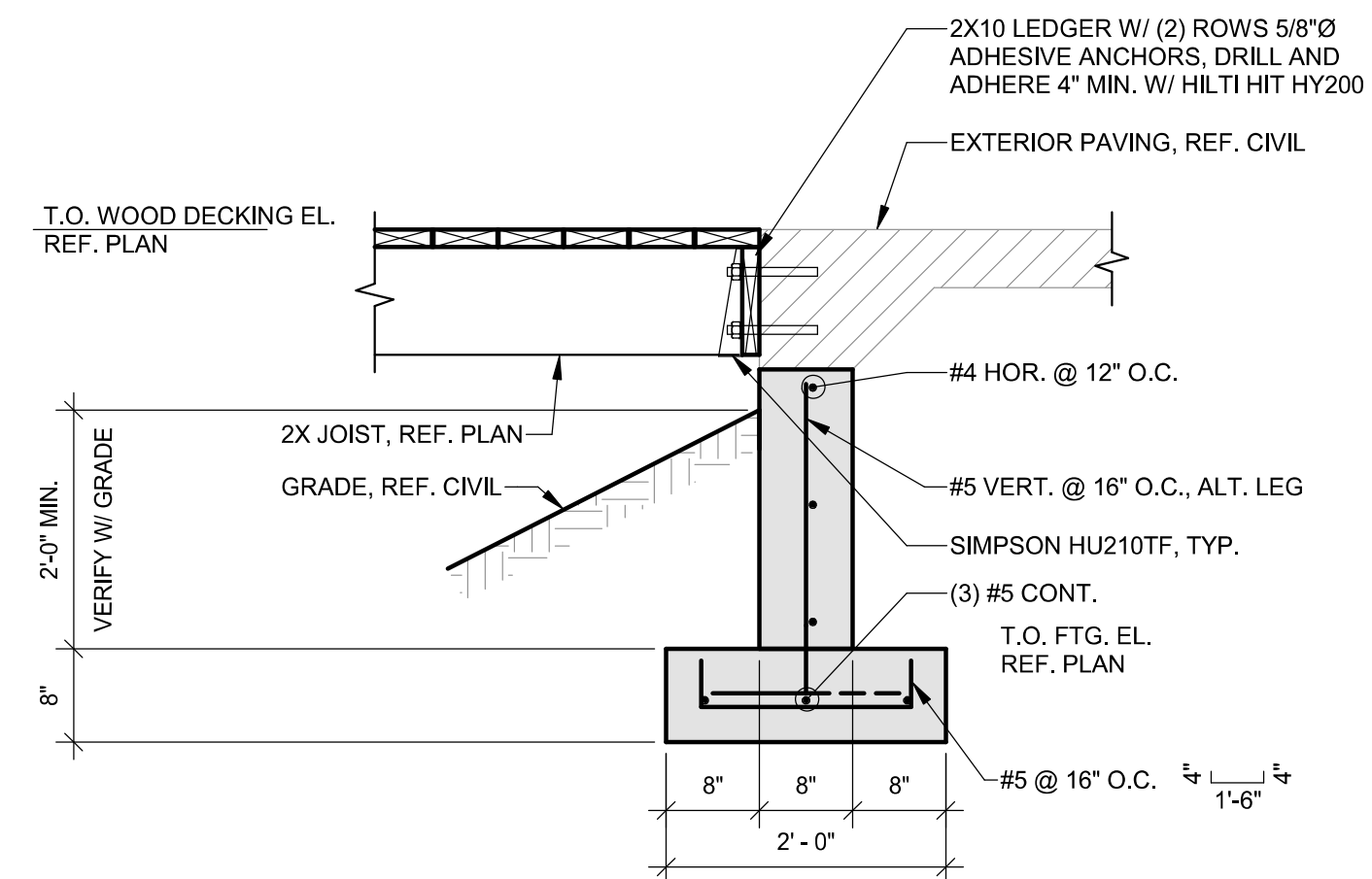
BAR SIZE (Ø)	CLEAR SPACING (S) (in.)			EMBEDMENT & CLASS A LAP (in.)				CLASS B LAP (in.)				HOOK EMBED (in.)				
				TOP BAR		OTHER BARS		TOP BAR		OTHER BARS						
	2d	3d	5d	2d < S < 3d	S < 5d	2d < S < 3d	S < 5d	2d < S < 3d	S < 5d	2d < S < 3d	S < 5d					
3	3/4	1 1/8	1 7/8	28	18	12	21	14	12	36	24	14	28	18	12	8
4	1	1 1/2	2 1/2	37	25	15	28	19	12	48	32	19	37	25	15	10
5	1 1/4	1 7/8	3 1/8	46	31	18	36	24	14	60	40	24	46	31	18	12
6	1 1/2	2 1/4	3 3/4	55	37	22	43	28	17	72	48	29	55	37	22	15
7	1 3/4	2 5/8	4 3/8	81	54	32	62	42	25	105	70	42	81	54	32	18
8	2	3	5	92	62	37	71	47	28	120	80	48	92	62	37	20
9	2 1/4	3 3/8	5 5/8	104	70	42	80	54	32	136	90	54	104	70	42	22
10	2 1/2	3 3/4	6 3/8	117	78	47	90	60	36	153	102	61	117	78	47	25
11	2 7/8	4 1/4	7	130	87	52	100	67	40	170	113	68	130	87	52	27

- NOTES:
- LENGTHS SHOWN CONFORM WITH NON-SEISMIC PROVISIONS OF ACI 318 FOR UNCOATED BARS.
 - BAR CLEAR SPACING IS THE CENTER TO CENTER BAR SPACING MINUS ONE BAR DIAMETER.
 - CLASS A LAP LENGTHS APPLY WHEN BAR LAPS ARE STAGGERED TO LAP HALF THE BARS AT THE SAME LOCATION. USE CLASS B LAP FOR ALL OTHER CASES.
 - TOP BARS ARE HORIZONTAL REINFORCEMENT PLACED SO THAT MORE THAN 12 INCHES OF CONCRETE IS CAST BELOW THE REINFORCEMENT.
 - MULTIPLY LAP AND EMBEDMENT LENGTHS GIVEN BY 2.0 FOR BARS WITH CLEAR SPACING OF TWO BAR DIAMETERS OR LESS, OR CONCRETE COVER OF ONE BAR DIAMETER OR LESS.

7 LAP TABLE
NO SCALE



6 TYP INTERIOR EQUIPMENT PAD SECTION
NO SCALE



8 BRIDGE END WALL FOUNDATION
3/4" = 1'-0"

2/14/2020 9:39:14 AM
BIM 360/198014-003 - Watson Park Events Center New Building/198014_MASTER
STRUCT_R19.rvt