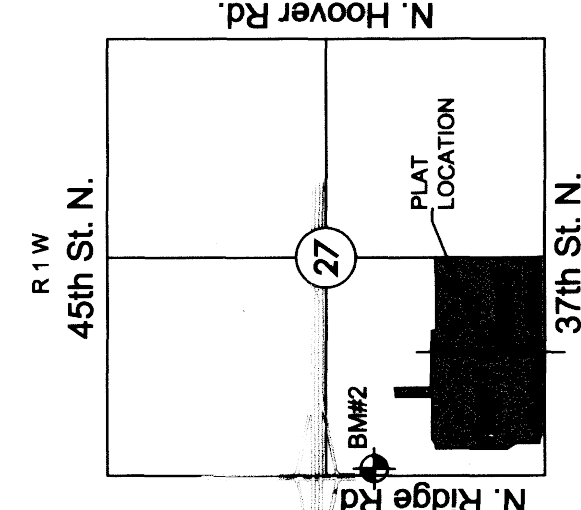


FINAL PLAT

ESTANCIA ADDITION

AN ADDITION TO WICHITA, SEDGWICK COUNTY, KANSAS

A=16°23'29"
R=4000.00
L=114.04'
CB=180°13'08"E



LEGEND

- △ = Section corner monument found
- ⊙ = Found 3/4" rebar w/ MKEC CLS 39 id. cap
- = Set 3/4" rebar w/ MKEC CLS 39 id. cap
- = Measured
- (M) = Calculated from measured
- (D) = Described
- ⊕ = Benchmark
- U.E. = Utility Easement
- D.E. = Drainage Easement



BENCHMARK

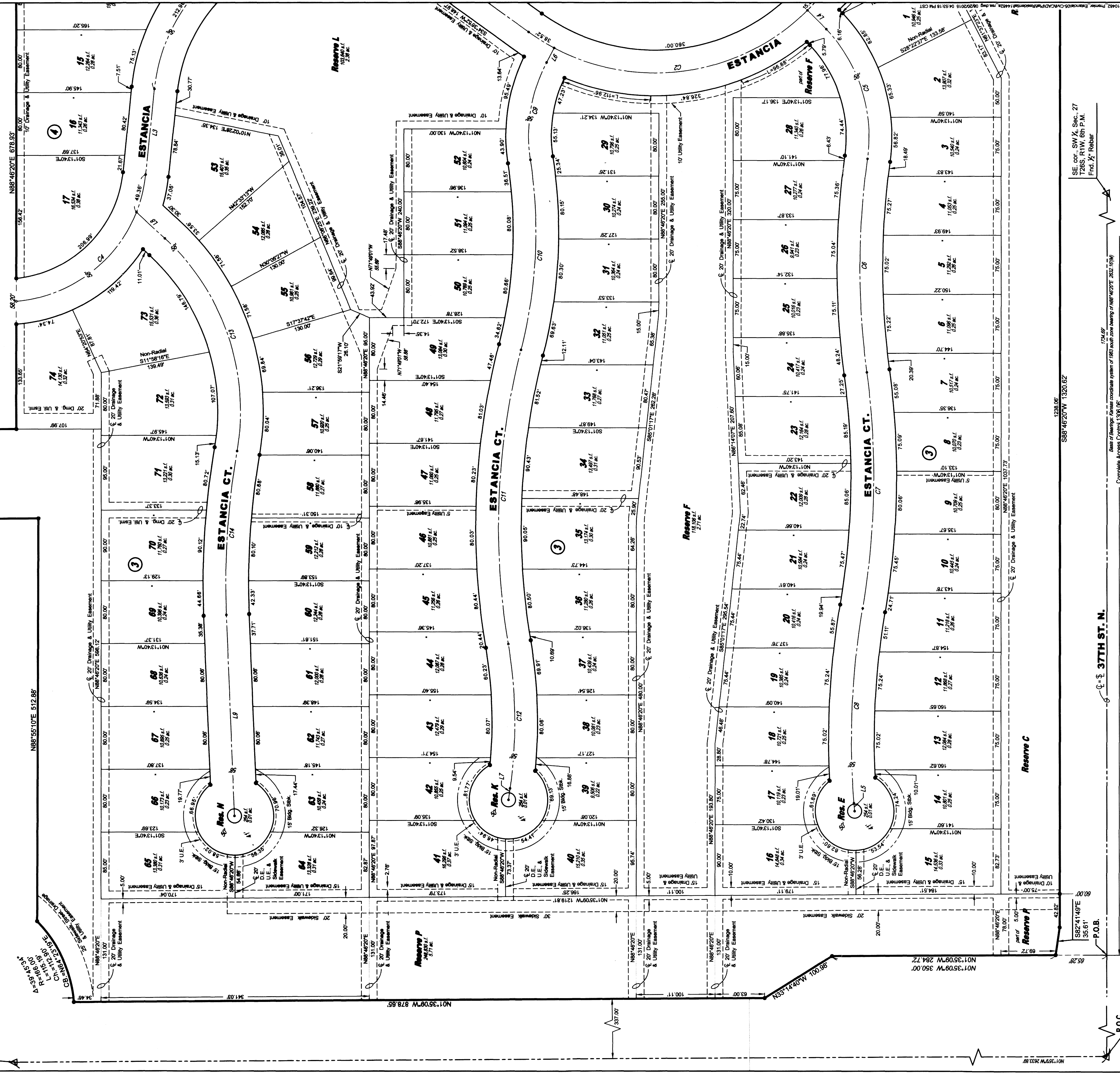
BM#2
Square cut top of curb on west side of median island and 10 foot north of the south end of said median lying south of K-96 and Ridge Rd. (being 336 feet S. of the NW corner SW 1/4, Sec. 27, T26S, R1W, 6th P.M.)
Elev. = 1335.80 NAVD88

MINIMUM PAD ELEVATIONS (LOWEST FORMAS)	LOTS	BLOCK ELEVATION	MA102.60
15 - 41	3	1334.1	
48 - 56	3	1334.1	
64 - 74	3	1334.1	

NW cor., SW 1/4,
Sec. 27, T26S,
R1W, 6th P.M.
Frd. 1/4" Cut

Date of Survey, April 28, 2015

Basis of Bearing: Kansas coordinate system of 1983
south zone grid bearing of N88°46'20"E on the south
line of the SW 1/4, Sec. 27, T26S, R1W, 6th P.M.
This plat is surveyed and platted on NAD83 using
Kansas state plane south zone coordinates, modified to
the surface, having a combined adjustment scale factor
of 1.000120014401728



Q-S-37TH ST. N.

P.O.C.
SW cor., SW 1/4, Sec. 27,
T26S, R1W, 6th P.M.
Frd. 1/4" Mag nail in asphalt
roadway

Complete Access Control 1308.05'
Base of Drainage: In the coordinate system of 1983 south zone bearing of N88°46'20"E 205.70 ft
774.60'

