



© 2020 GARVER, LLC  
 THIS DOCUMENT, ALONG WITH THE IDEAS AND DESIGNS CONVEYED HEREIN, SHALL BE CONSIDERED INSTRUMENTS OF PROFESSIONAL SERVICE AND ARE PROPERTY OF GARVER, LLC. ANY USE, REPRODUCTION, OR DISTRIBUTION OF THIS DOCUMENT, ALONG WITH THE IDEAS AND DESIGNS CONTAINED HEREIN, IS PROHIBITED UNLESS AUTHORIZED IN WRITING BY GARVER, LLC OR EXPLICITLY ALLOWED IN THE GOVERNING PROFESSIONAL SERVICES AGREEMENT FOR THIS WORK.



REV.	DATE	DESCRIPTION	BY



CITY OF WICHITA  
 WICHITA, KANSAS  
 CASA BELLA  
 SECOND ADDITION  
 PAVING IMPROVEMENTS

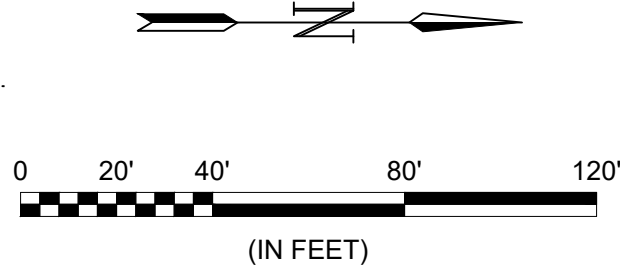
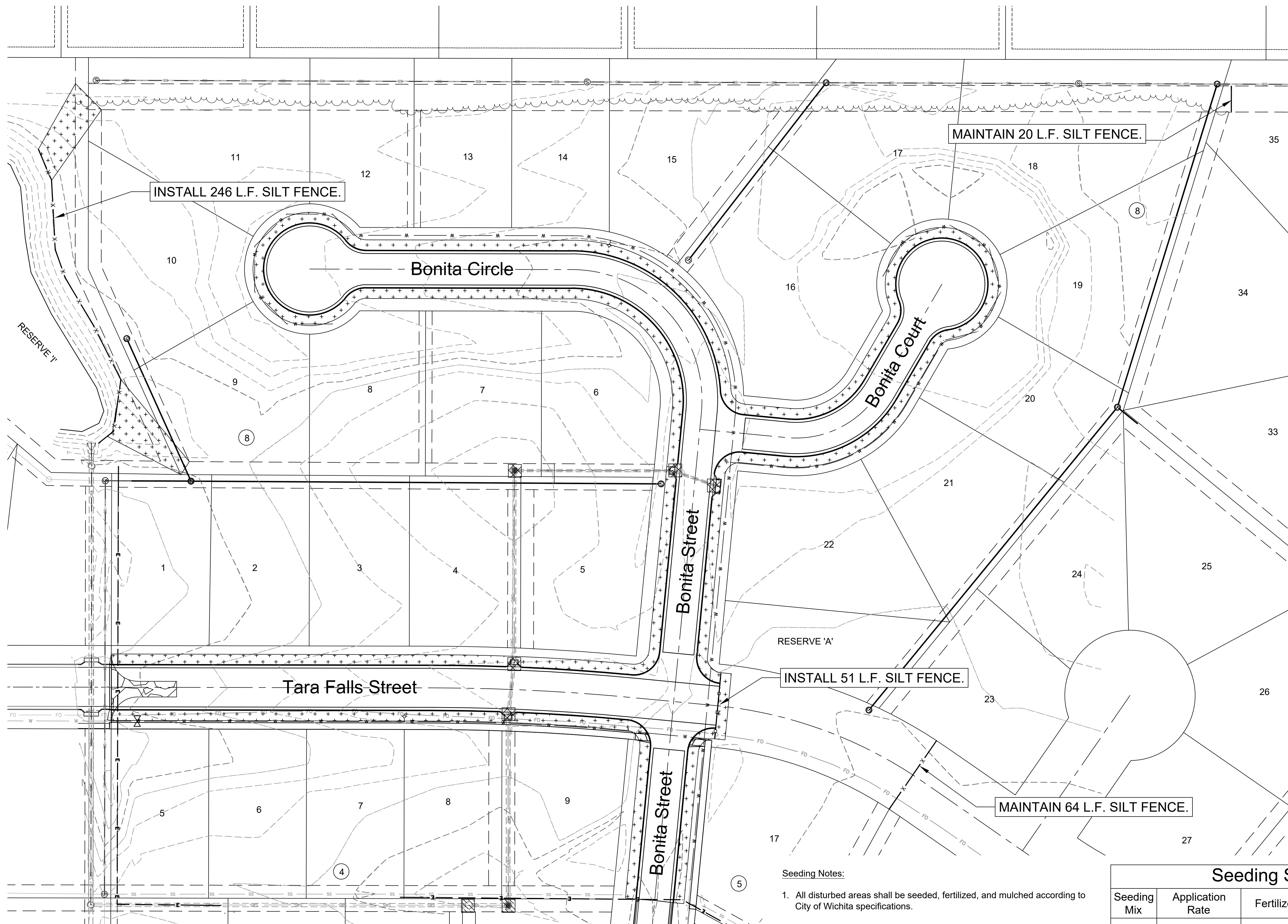
**EROSION CONTROL PLAN**

JOB NO.: 19T41019  
 DATE: MAR 2020  
 DESIGNED BY: KWL  
 DRAWN BY: CDJ

BAR IS ONE INCH ON ORIGINAL DRAWING  
 IF NOT ONE INCH ON THIS SHEET, ADJUST SCALES ACCORDINGLY.

DRAWING NUMBER  
 -----

SHEET NUMBER **19 OF 25**



File: L:\2019\19T41019 - Casa Bella Phase 7\Drawings\C3D\PAVING\EROSION CONTROL.dwg Last Save: 5/12/2020 1:39 PM Last saved by: Coljney  
 Last plotted by: Jurey, Caleb D. Plot Date: 5/12/2020 1:39 PM Plotter Used: None

- Seeding Notes:**
- All disturbed areas shall be seeded, fertilized, and mulched according to City of Wichita specifications.
  - All disturbed areas in the Right-of-Way and in Reserves 'A' and 'I' - except the areas under paving - shall be seeded with Fescue or Buffalo seeding mix. If the area is disturbed after seeding, the Contractor shall re-seed, -fertilize, and -mulch the affected area.
  - The Contractor may use a Rye mix as a temporary seeding mix during construction activities, but the Right-of-Way and Reserves 'A' and 'I' must have a Fescue or Buffalo seeding mix at the completion of construction activities. All other areas may be seeded using a Buffalo or Rye mix.
  - All seeding shall be bid as 'Project Seeding, L.S.'

Seeding Mix	Application Rate	Fertilizer	Application Rate	Seeding Season
Fescue	8 lb PLS/1000 sf	12-24-12 N-P-K	45 lb/Ac	Dec 1 - May 1 or Aug 15 - Oct 15
Buffalo	2.5 lb PLS/1000 sf	5-12-12 N-P-K	40 lb/Ac	Dec 1 - June 1
Rye	5 lb/1000 sf			

**Seeding Areas:**  
 (For Information Only)

Fescue or Buffalo: 6,850 S.Y.  
 Buffalo or Rye: 36,535 S.Y.

- MAINTAIN Construction Entrance (1 Ea.)
- MAINTAIN Inlet Protection (5 Ea.)
- INSTALL Inlet Protection (2 Ea.)
- INSTALL Curlex Blanket (3010 S.Y.)
- MAINTAIN Silt Fence (84 L.F.)
- INSTALL Silt Fence (297 L.F.)