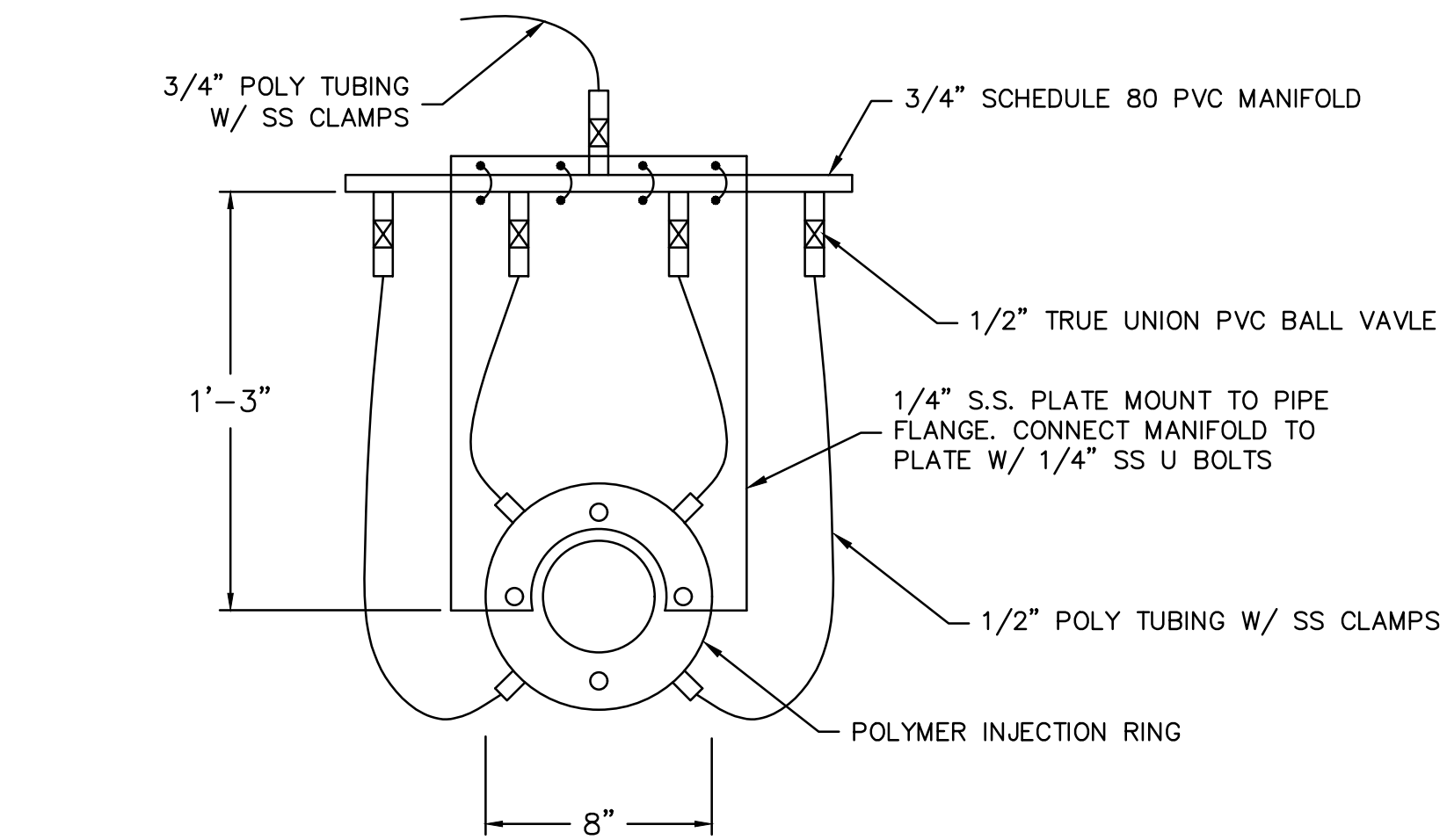
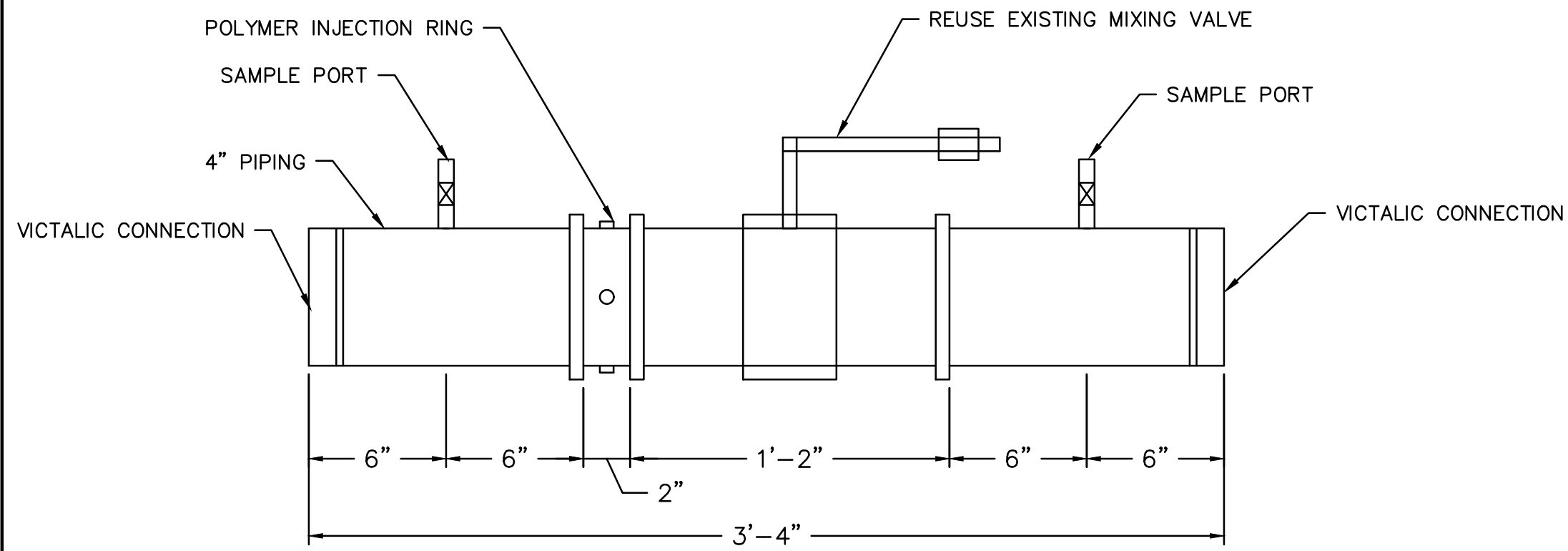
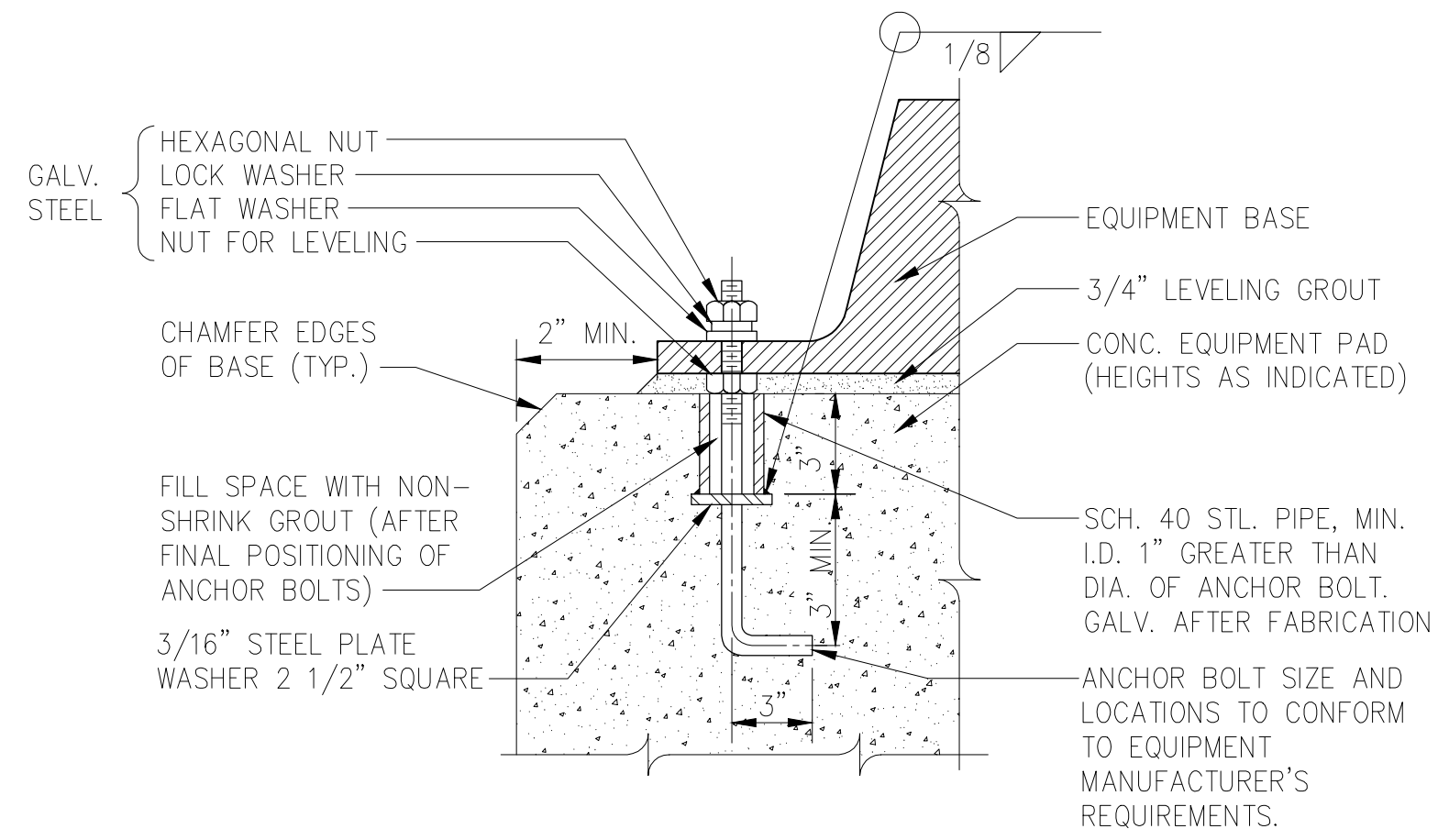


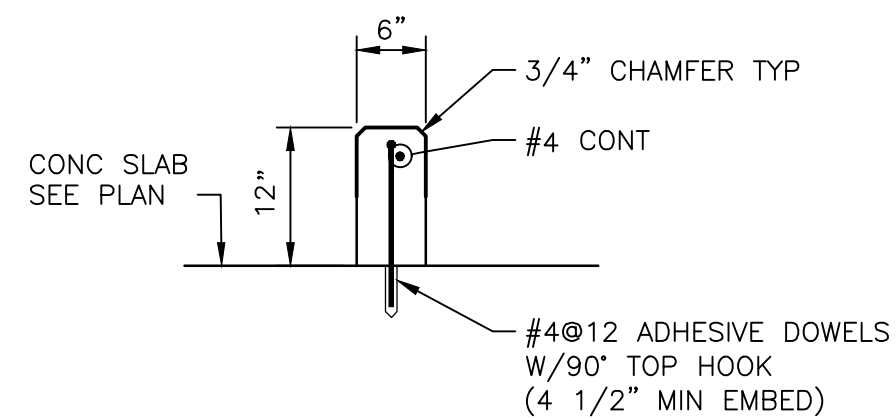
DWG: F:\2019\2001-2500\019-2051\40-Design\AutoCAD\Final Plans\Sheets\WTW\200\_Polymer\WTW\_200\_Polymer\_VP\_DET\_0192051-P.dwg  
 DATE: Jul 01, 2020 9:11pm XREFS:  
 USER: nduncon



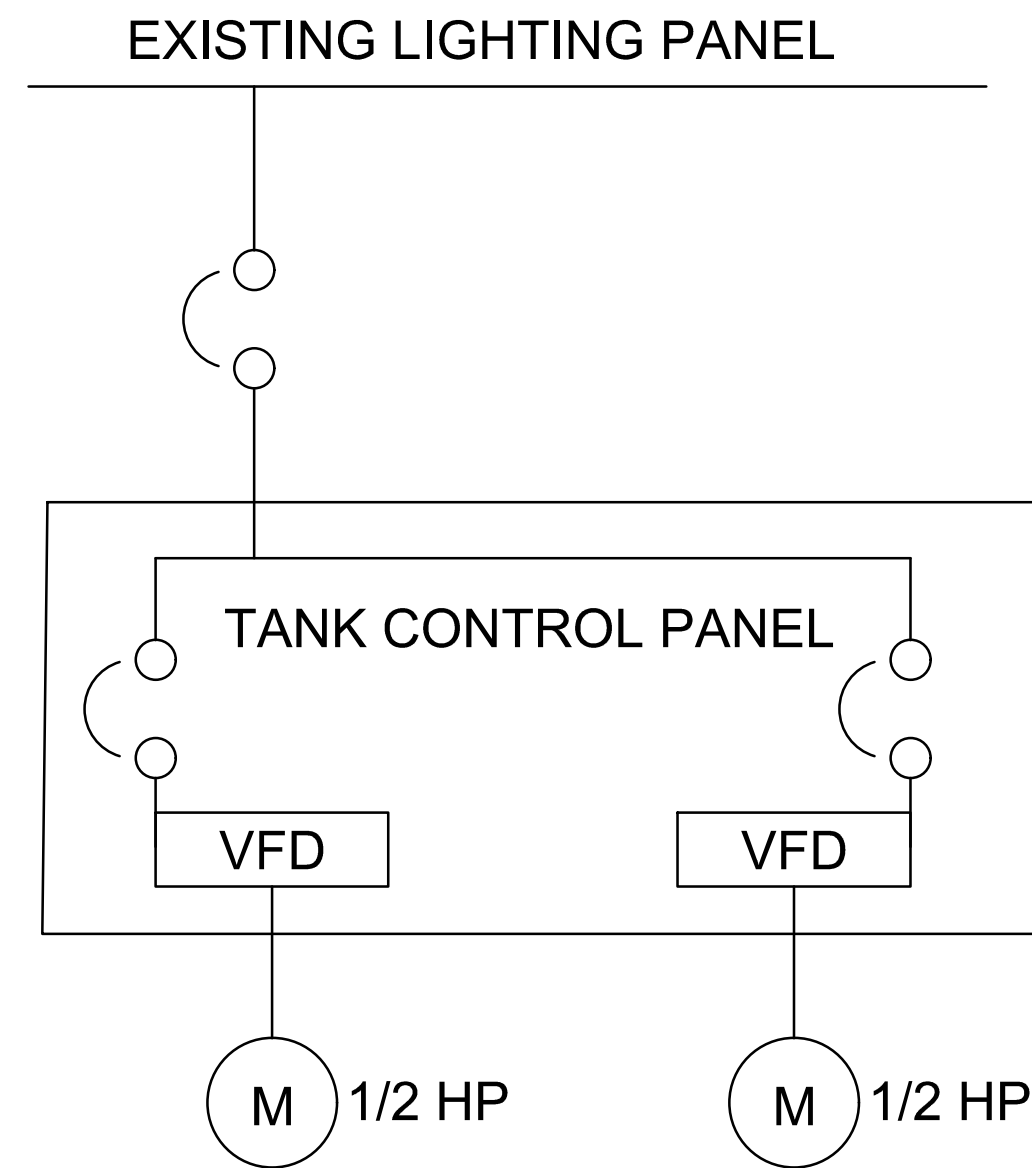
**SLUDGE POLYMER MIXING ASSEMBLY DETAIL** 1  
SCALE: NTS



**TYPICAL EQUIPMENT BASE ANCHOR BOLT DETAIL** 2  
SCALE: NTS

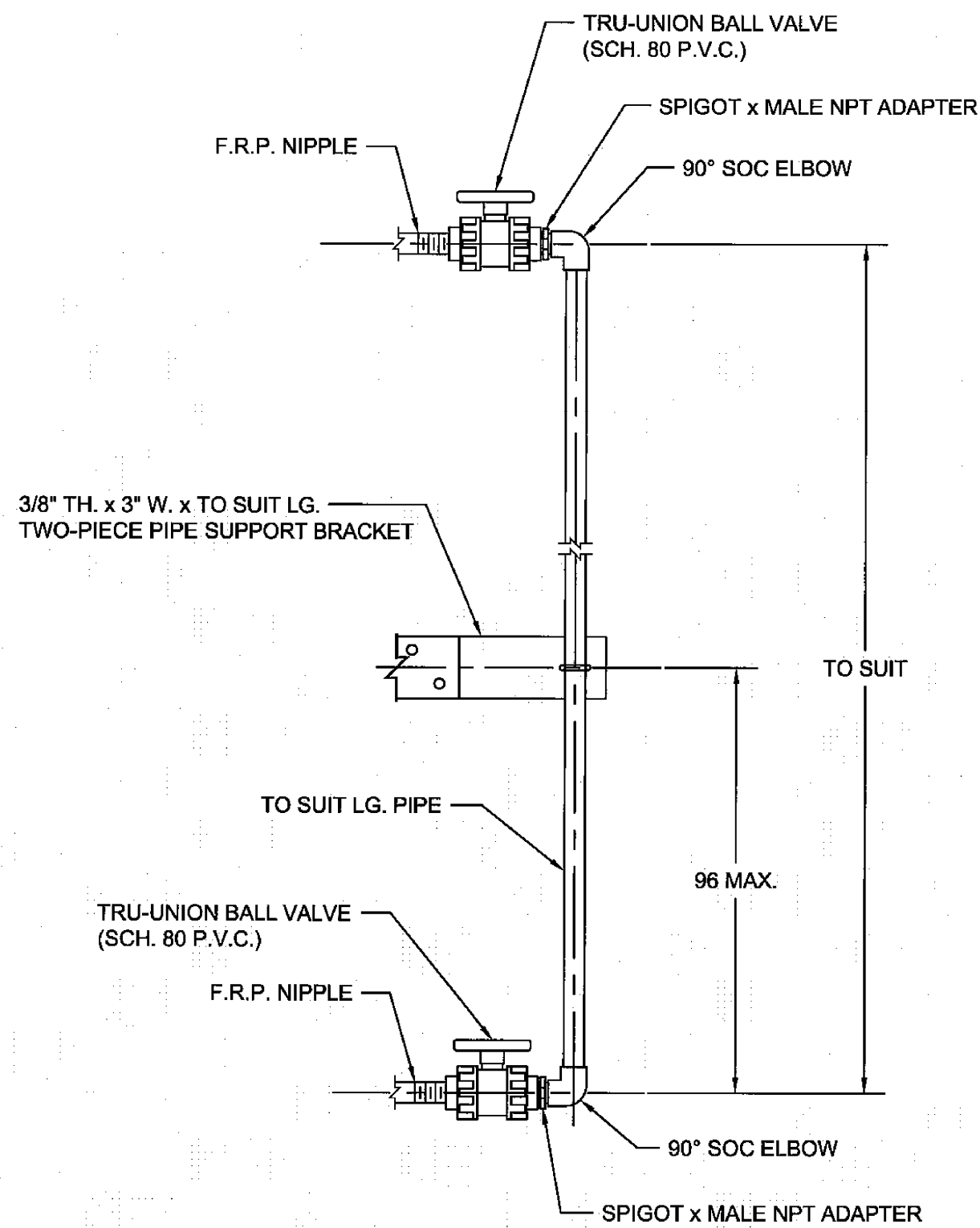


**CONCRETE CONTAINMENT CURB** 3  
SCALE: NTS



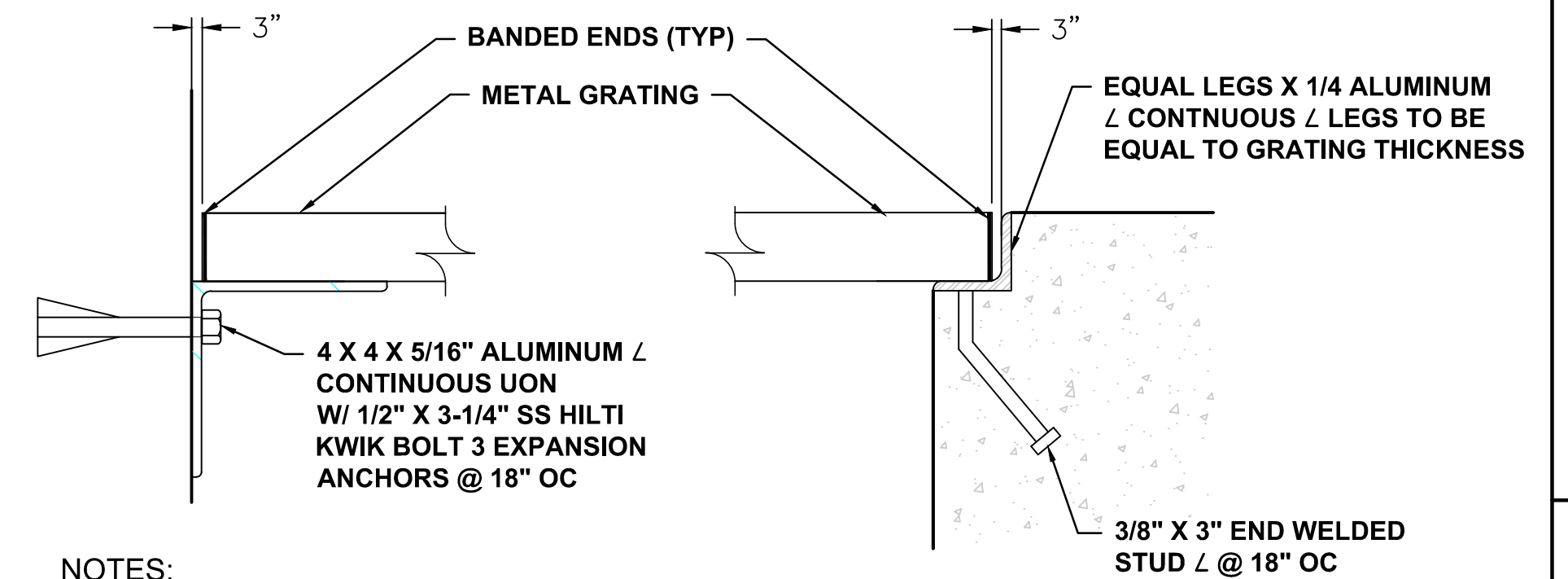
- NOTES:**
- CONNECT NEW POLYMER FEED UNITS TO THEIR RESPECTIVE EXISTING CIRCUITS. INSTALL NEW CONDUIT AND WIRE.
  - CONNECT NEW LEVEL INDICATION UNITS TO THEIR RESPECTIVE EXISTING CIRCUITS. INSTALL NEW CONDUIT AND WIRE.

**CONTROL PANEL ELECTRICAL DETAIL** 4  
SCALE: NTS



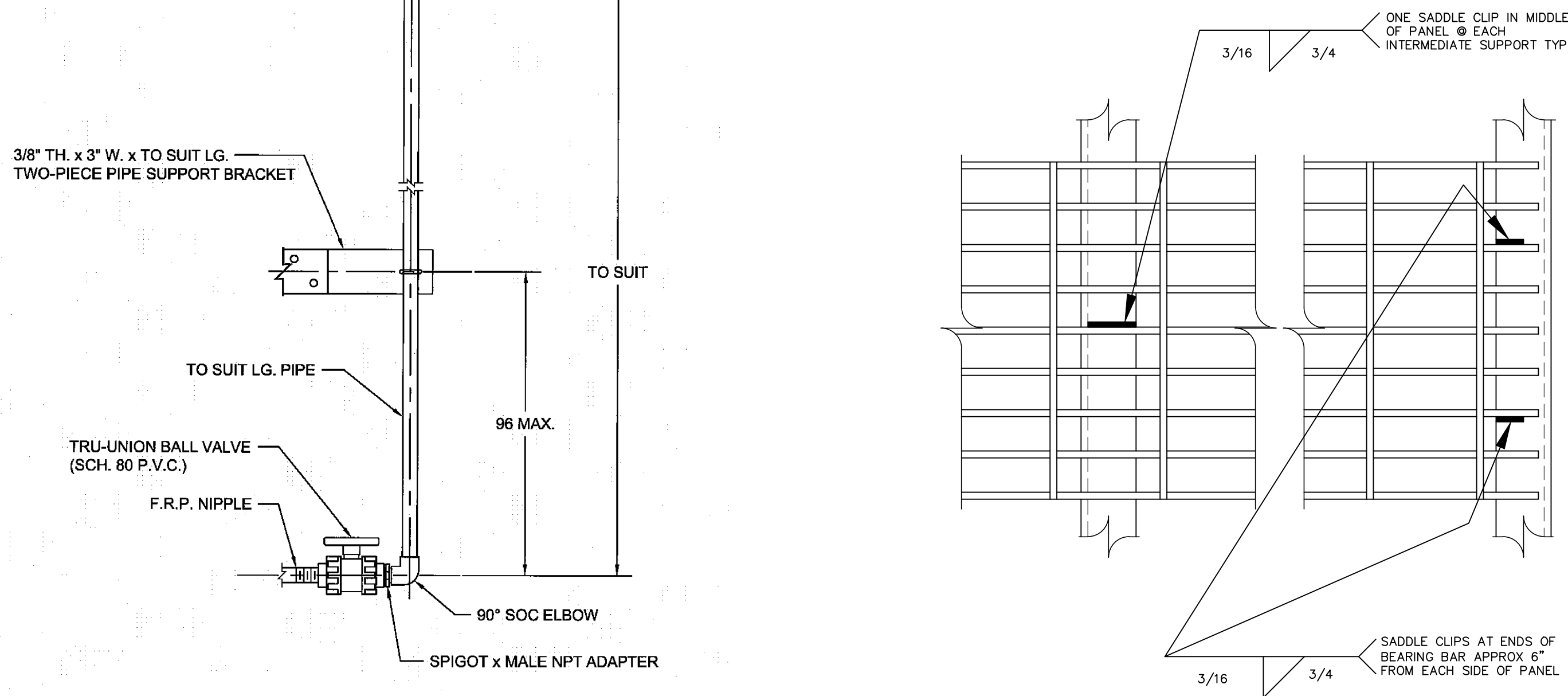
- NOTES:**
- MATERIAL: SCH. 40 CLEAR P.V.C. (PIPE & ELBOWS)
  - SIGHT GLASS CONNECTED TO TANK WITH NIPPLE.
  - SUPPORT BRACKETS REQUIRED ON GLASS ASSEMBLIES LONGER THAN 8'-0".

**PIPE SITE GLASS DETAIL** 5  
SCALE: NTS



- NOTES:**
- ANGLE TO BE COATED FOR DISSIMILAR METALS AND CONCRETE PROTECTION.
  - WALLS SHALL BE COATED BEFORE ANGLE SEATS ARE SET.

**GRATING SUPPORT DETAIL** 6  
SCALE: NTS



**TYPICAL GRATING ATTACHMENT DETAIL** 7  
SCALE: NTS

**olsson**  
 201 N.W. 63rd Street, Suite 130  
 Oklahoma City, OK 73116  
 TEL: 405.242.6600  
 www.olsson.com



REV. NO.	DATE	REVISIONS DESCRIPTION

**POLYMER SYSTEM DETAILS**  
**SEWAGE TREATMENT PLANT NO. 2**  
**POLYMER SYSTEM IMPROVEMENTS**  
 WICHITA, KS  
 2020

drawn by: CJW  
 checked by: BRC  
 approved by: KLR  
 QA/QC by: KLR  
 project no.: 019-2051  
 drawing no.:  
 date: