

STATE	PROJECT NO.	YEAR	SHEET NO.	TOTAL SHEETS
KANSAS	472-85463	2020	1	97

SYCAMORE STREET IMPROVEMENTS

CITY OF WICHITA, KANSAS

GARY JANZEN, P.E. – CITY ENGINEER

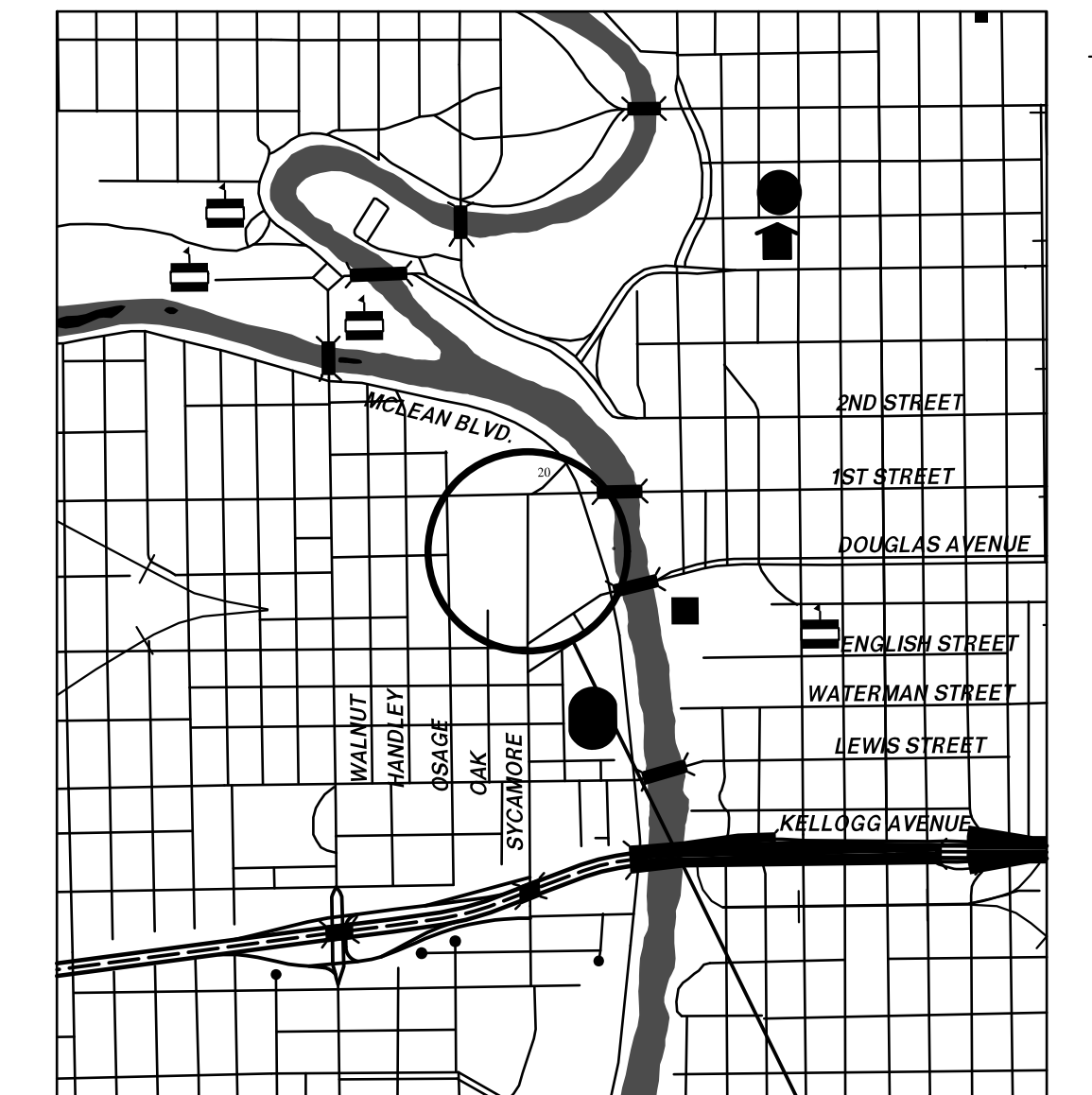
C.O.W. PAVING PROJ. NO. 472-85463

O.C.A. No. 707144

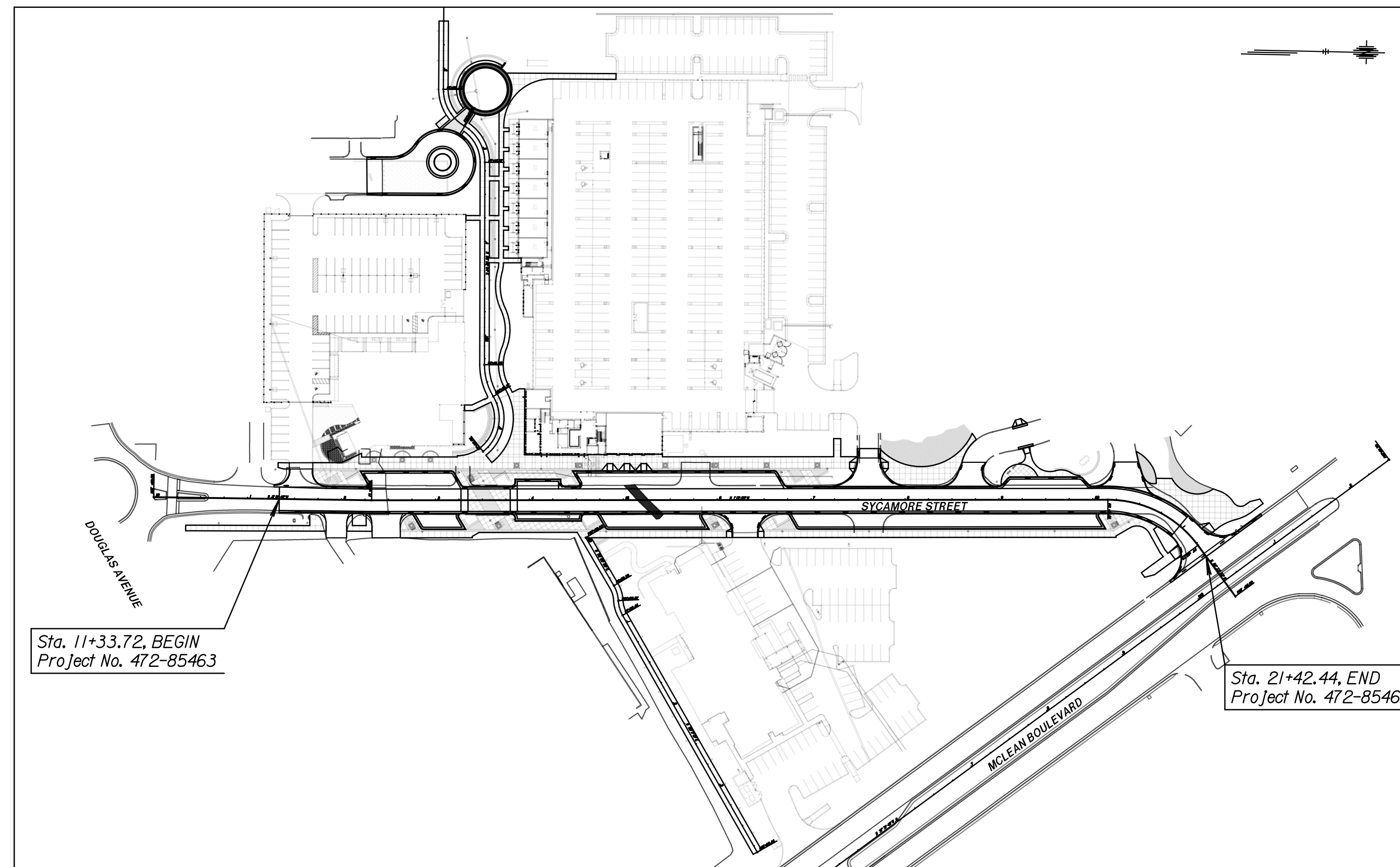
INDEX OF SHEETS

1	Title Sheet
2	General Notes
3	Coordinate Control Data
4 - 6	Typical Sections
7 - 13	Proposed Plan & Profile Sheets
14 - 27	Streetscape Plan Sheets
28 - 31	Storm Sewer Plan & Profile Sheets
32	Schedule of Storm Sewer
33 - 39	Storm Sewer Details
40	Joining Plan Sheets
41 - 47	Intersection, Entrance, & Parking Layout Details
48 - 49	Driveway Details
50	Wheelchair Ramp Details
51	Curb & Gutter Details
52 - 56	Concrete Pavement Details
57 - 60	Erosion Control Details
61	Summary of Quantities
62	Construction Phasing Overview
63 - 64	Construction Phasing Sheets
65 - 66	Pavement Marking & Signing Plans
67 - 68	Pavement Marking & Signing Details
69 - 73	Electrical & Lighting Plans
74 - 77	Water System Details
78	Water System General Notes & Summary of Quantities
79	Waterline Plan & Profile Sheet
80 - 81	Sanitary Sewer Details
82 - 97	Cross Section Sheets

GRADING
CONCRETE PAVEMENT
LANDSCAPING
PAVEMENT MARKING
SIGNING
LIGHTING
IRRIGATION



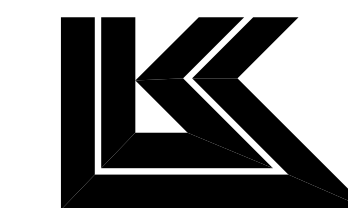
LOCATION MAP - PROJECT AREA



DESIGN DESIGNATION

ADT (2018)	=	900
ADT (2048)	=	1,630
V	=	20 M.P.H.
C of A	=	NONE
LATERAL OFFSET	=	6.0 FT.

THE PROJECT LIMITS SHALL BE CLOSED TO THRU TRAFFIC AT ALL TIMES DURING CONSTRUCTION.
ACCESS TO THE LIBRARY SHALL BE UTILIZED OFF OF 2ND STREET DURING THE DURATION OF THE PROJECT.
ALL SIGNING SHALL BE MAINTAINED BY THE CONTRACTOR.



LK Architecture, Inc.
345 Riverview
Suite 200
Wichita, KS 67208
Main: 316-268-0230

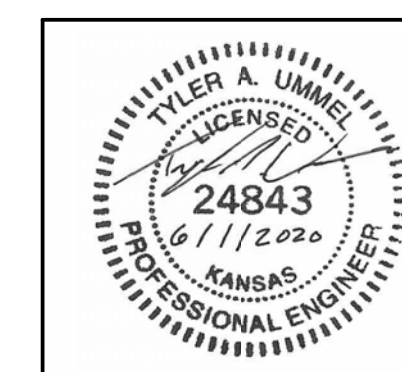


245 N. Waco
Suite 222
Wichita, KS 67202
Main: 316-303-3000
Fax: 316-462-5629

CONVENTIONAL SIGNS

COUNTY LINE	-----	CENTER LINE OF PROJECT	-----
CITY LIMITS	=====	TERRACE	-----
STATE OR NATIONAL LINE	-----	CULVERTS	-----
TOWNSHIP, SECTION or GRANT LINE	-----	DROP INLET & STORM SEWER	-----
PROPERTY LINE	-----	ACCESS CONTROL	-----
HIGHWAY FENCE	-----	POWER POLE	-----
EXISTING FENCE	-----	TELEPHONE POLE	-----
GUARD FENCE	-----	MARSH	-----
CONSTRUCTION LIMITS	-----	HEDGE	-----
RIGHT OF WAY LINE	-----	TREES	-----
TRAVELED WAY	-----	PROFILE ELEVATION	-----
RAILROADS	-----	STREAM or CREEK	-----

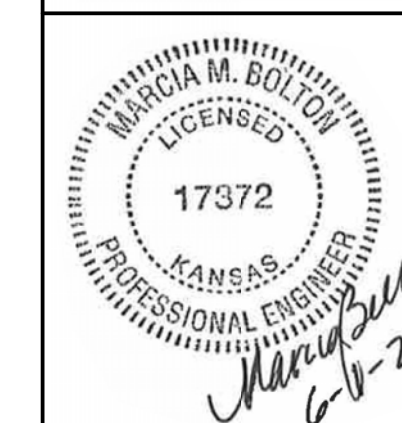
GROSS LENGTH OF PROJECT	1,008.72 FT.	
EXCEPTIONS	0.00 FT.	
NET LENGTH OF PROJECT	1,008.72 FT.	0.19 MILES
NET LENGTH OF BRIDGES	0.00 FT.	0.00 MILES
NET LENGTH OF ROAD	1,008.72 FT.	0.19 MILES



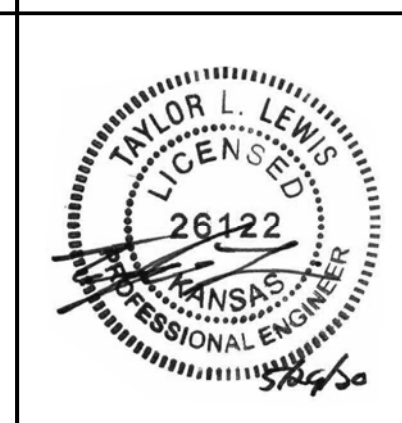
TranSystems
Tyler A. Ummel P.E.
KS License No. 24843
Sheets: 1-12, 28-68, 74-97



LK Architecture, Inc.
Landscape Architect
Jeffrey A. Best, P.L.A.
KS License No. 679
Sheets: 14-27



TranSystems
Marcia M. Bolton P.E.
KS License No. 17372
Sheets: 13



LK Architecture, Inc.
Engineer of Record
Taylor Lewis, P.E.
KS License No. 26122
Sheets: 69-73

DATE	
BY	
SURVEY	
CADD TECHNICIAN	
DESIGNERS	
SQUAD	