

WATERING SCHEDULE

NUMBER	MODEL	TYPE	PRECIP	SUN	MON	TUE	WED	THU	FRI	SAT	IN/WEEK	MIN./WEEK	GAL./WEEK	GAL./DAY
1	Rain Bird PEB-PRS-D	Bubbler	2.06 in/h	8 min				8 min			1	23	126.5	42.2
2	Rain Bird PEB-PRS-D	Shrub Spray	2.13 in/h		10 min	8 min	10 min	9 min	10 min	1	29	185.7	61.9	
3	Rain Bird PEB-PRS-D	Shrub Spray	2.29 in/h		9 min		9 min	9 min	9 min	1	27	363.7	121.2	
4	Rain Bird PEB-PRS-D	Shrub Spray	2.26 in/h		9 min		9 min	9 min	9 min	1	27	353.7	117.9	
5	Rain Bird PEB-PRS-D	Shrub Spray	1.97 in/h		11 min		11 min	11 min	11 min	1	31	383.3	127.8	
6	Rain Bird PEB-PRS-D	Shrub Spray	2.35 in/h		9 min		9 min	9 min	9 min	1	26	320.1	106.7	
TOTALS:				8	48	8	48	8	48		163		1,733	577.7

CRITICAL ANALYSIS

Generated: 2020-05-14 14:32

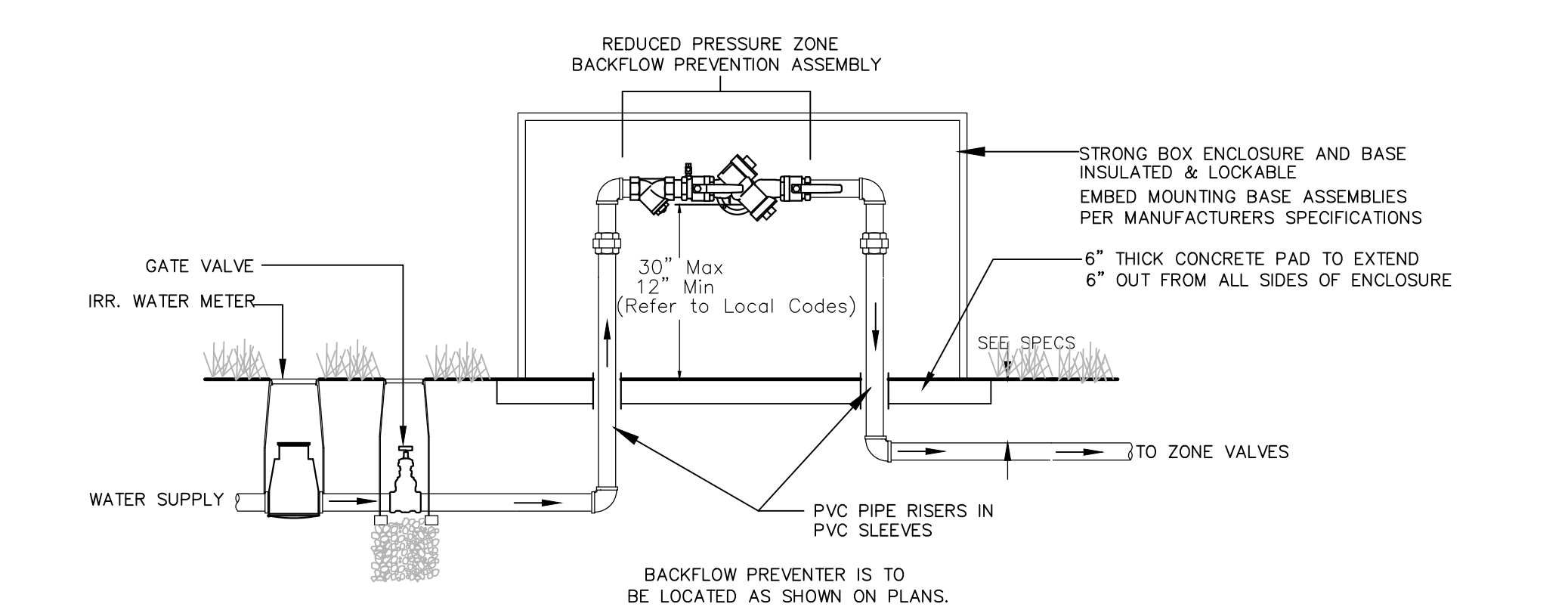
P.O.C. NUMBER: 01
Water Source Information:

FLOW AVAILABLE
Point of Connection Size: 1"
Flow Available: 20.24 gpm

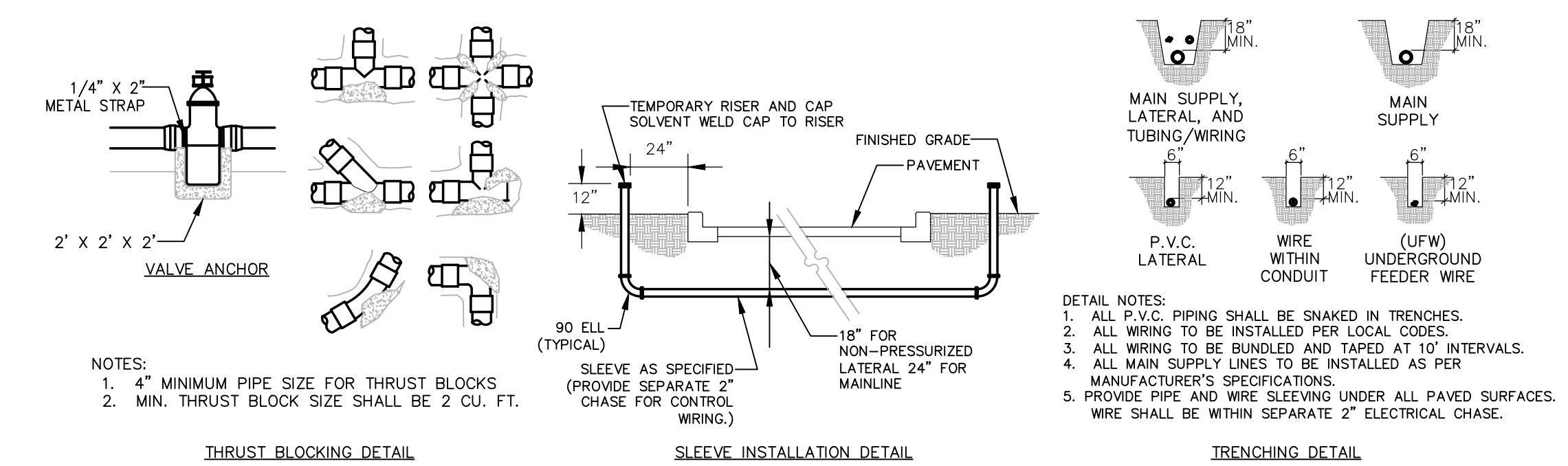
PRESSURE AVAILABLE
Static Pressure at POC: 90.00 psi
Pressure Available: 90.00 psi

DESIGN ANALYSIS
Maximum Station Flow: 13.47 gpm
Flow Available at POC: 20.24 gpm
Residual Flow Available: 6.77 gpm

Critical Station: 1
Design Pressure: 45.00 psi
Friction Loss: 7.92 psi
Fittings Loss: 0.79 psi
Elevation Loss: 0.00 psi
Loss through Valve: 1.71 psi
Pressure Req. at Critical Station: 55.42 psi
Loss for Fittings: 0.01 psi
Loss for Main Line: 0.08 psi
Loss for POC to Valve Elevation: 0.00 psi
Loss for Backflow: 12.30 psi
Critical Station Pressure at POC: 67.81 psi
Pressure Available: 90.00 psi
Residual Pressure Available: 22.19 psi



1 REDUCED PRESSURE ZONE BACKFLOW PREVENTER
LOCATION AS SHOWN ON IRRIGATION PLAN



2 GENERAL PIPING DETAILS

245 NORTH WACO
SUITE 222
WICHITA, KANSAS 67202
PHONE: 316-303-3000
FAX: 316-462-5629

CONSULTANTS:

LK ARCHITECTURE, INC.
345 RIVERVIEW
SUITE 200
WICHITA, KANSAS 67208
PHONE: 316-268-0230

SYCAMORE STREET IMPROVEMENTS

WICHITA, KANSAS

REVISIONS:	DESCRIPTION	DATE	MARK

PROJ NO: 472-85284
SCALE: 1" = 10'-0"
DATE: 05/29/2020
DESIGNED BY: J. Best
DRAWN BY: J. Best
CHECKED BY: J. Best

IRRIGATION PLAN

SHEET NO. 21

SHEET 21 OF 97