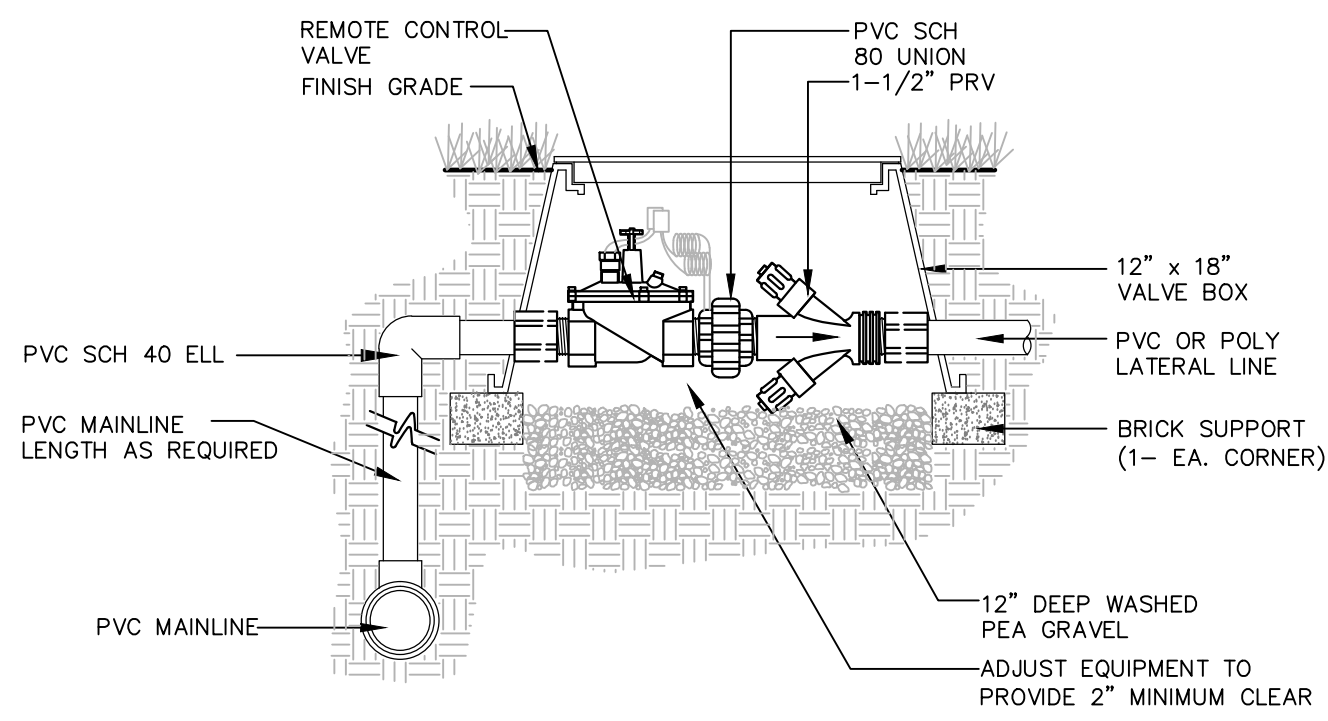


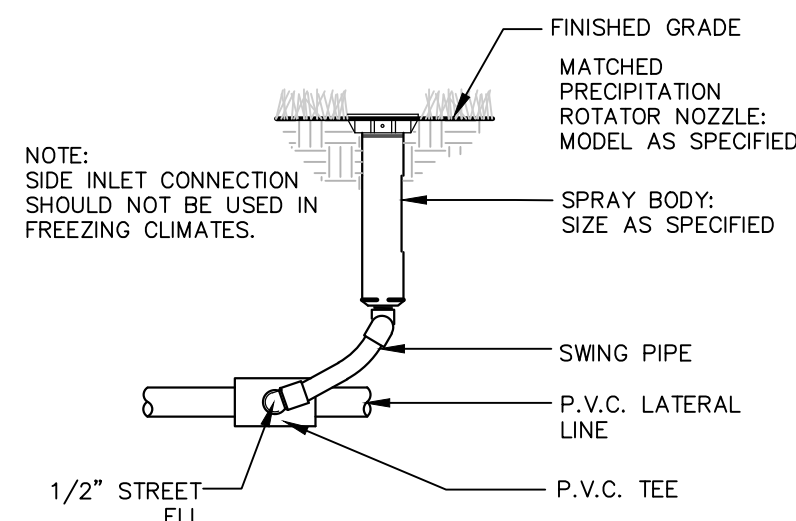
# A IRRIGATION PLAN

1" = 10'-0"



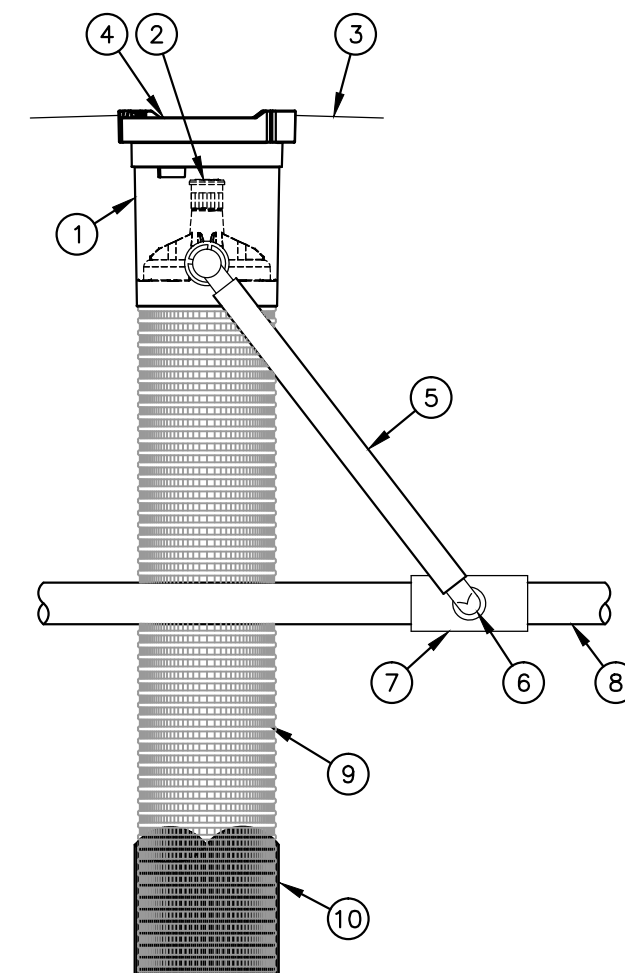
## 1 REMOTE CONTROL VALVE

NTS



## 2 SPRAY BODY W/MATCHED PRECIP. ROTATOR NOZZLE

NTS



- 1 ROOT WATERING SYSTEM: RAIN BIRD RWS-B-C-1402 (INCLUDES RETAINER, 36" (91.4 CM) TUBE, 0.5 GPM (1.9 L/M) BUBBLER & INTEGRATED CHECK VALVE, 4" (10.2 CM) GRATE, VERSATILE SWING ASSEMBLY WITH 1/2" (1.3 CM) M NPT INLET)
- 2 BUBBLER: RAIN BIRD 1402 0.5 GPM (1.9 L/M) (INCLUDED)
- 3 FINISH GRADE/TOP OF MULCH
- 4 4" (10.2 CM) LOCKING GRATE (INCLUDED)
- 5 SWING ASSEMBLY (INCLUDED)
- 6 1/2" (1.3 CM) MALE NPT INLET (INCLUDED)
- 7 PVC SCH 40 TEE OR EL
- 8 PVC OR POLYETHYLENE LATERAL PIPE
- 9 4" (10.2 CM) WIDE X 18" (91.4 CM) LONG RIGID BASKET WEAVE CANISTER (INCLUDED)
- 10 OPTIONAL SOCK (RWS-SOCK) FOR SANDY SOILS

NOTES:  
 INSTALL PRODUCT SO THAT THE GRATE IS EVEN WITH FINISH GRADE OR TOP OF MULCH.  
 OPTIONAL SAND SOCK (RWS-SOCK) IS 34" (86.4 CM) IN LENGTH TO COVER MESH BASKET AREA.  
 WHEN INSTALLING IN EXTREMELY HARD OR CLAY SOILS, ADD 3/4" (1.9 CM) GRAVEL UNDER AND AROUND THE UNIT TO ALLOW FASTER WATER INFILTRATION AND ROOT PENETRATION.  
 ONCE RWS HAS BEEN INSTALLED, FILL THE BASKET WITH PEA GRAVEL BEFORE LOCKING LID.

## 3 ROOT WATERING SYSTEM (RWS)

NTS

REVISIONS:	MARK	DATE	DESCRIPTION

PROJ NO: 472-85284  
 SCALE: 1" = 10'-0"  
 DATE: 05/29/2020  
 DESIGNED BY: J. Best  
 DRAWN BY: J. Best  
 CHECKED BY: J. Best

SHEET TITLE:  
 IRRIGATION PLAN

SHEET NO.  
 22  
 SHEET 22 OF 97