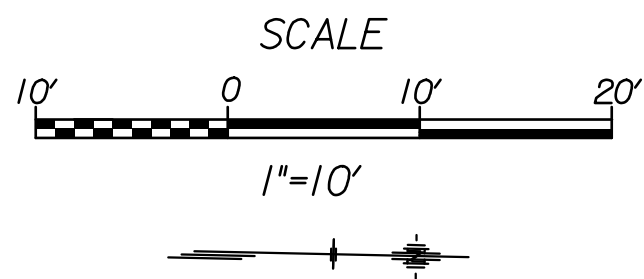


LEGEND

Existing Water Line (Removed)



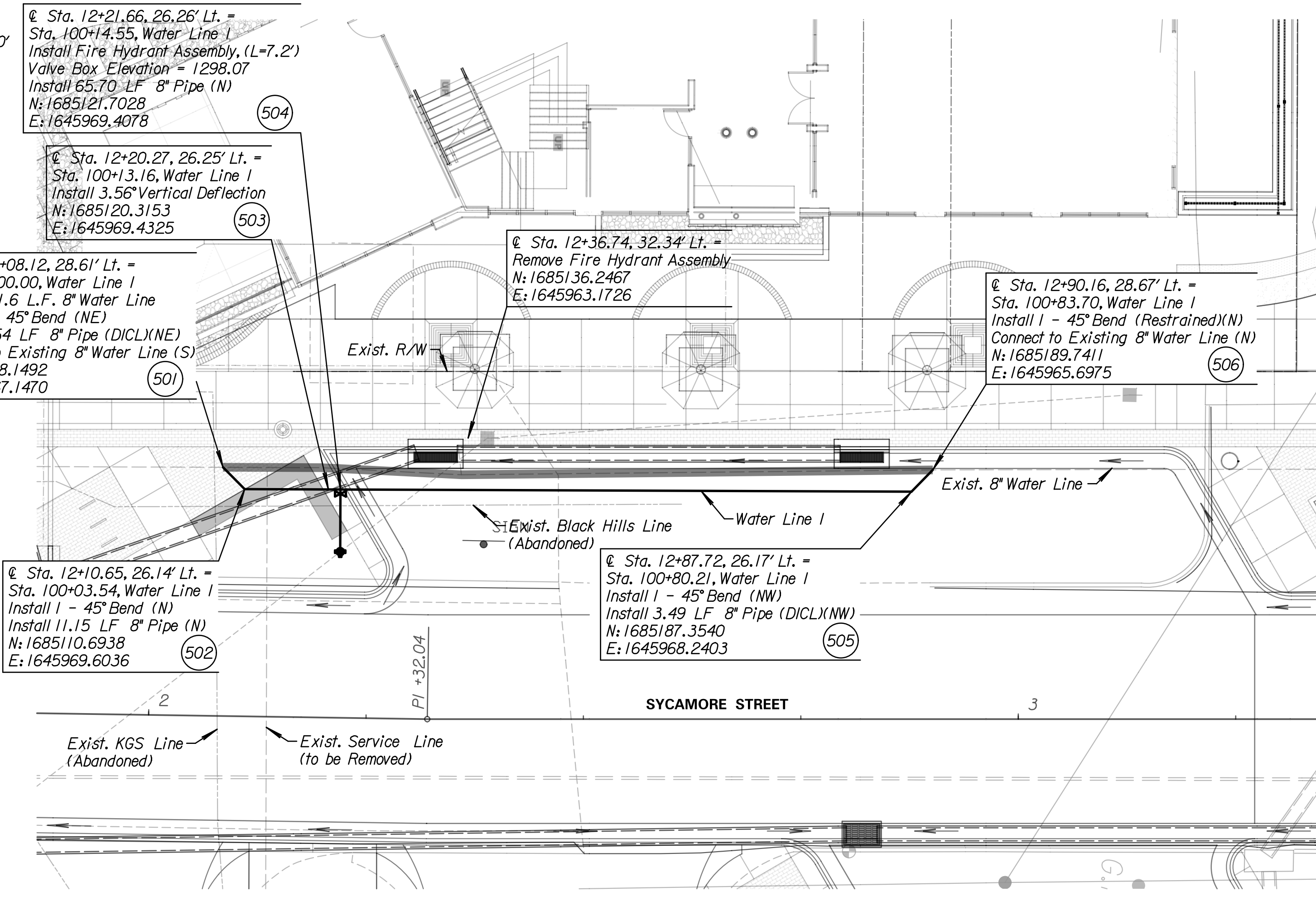
Note:
It is the Contractor's responsibility to contact & coordinate with the utility companies prior to the installation of the water lines to locate any existing utilities that have not been previously located or new utilities that have been relocated.

Contractor shall isolate water line by using the water valve located at Douglas Avenue.

For Streetscape Layout Details and Information, See Sheets 14-27

For Storm Sewer Details and Layout Information, See Sheets 28-31

The Contractor shall install three (3) water meter services for the Sycamore Street and Greenway Irrigation, for irrigation details See Sheets irrigation

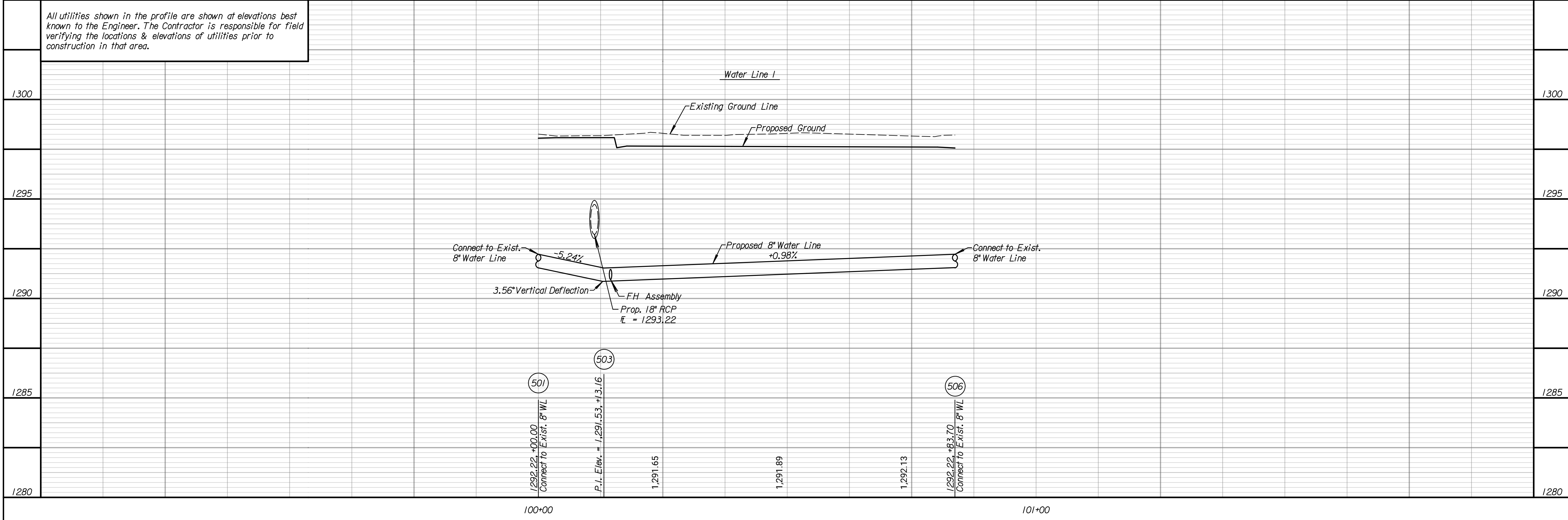


WATER METER INSTALLATION
(For Information Only)

WATER METER LOCATION	WATER METER TOP ELEVATION	TYPE OF SERVICE	NORTHING	EASTING
13+40.09, 30.32' Lt.	1298.55	2" Short Service	1685239.6174	1645962.9738
13+64.13, 26.62' Lt.	1298.69	1" Short Service	1685263.7315	1645966.1475
14+43.61, 37.11' Rt.	1300.23	1" Long Service	1685344.5678	1646028.1618

2" service line shall be stubbed out to the existing west right of way line and capped for the future Greenway Improvements

All utilities shown in the profile are shown at elevations best known to the Engineer. The Contractor is responsible for field verifying the locations & elevations of utilities prior to construction in that area.



Tran Systems
245 NORTH WACO
SUITE 222
WICHITA, KANSAS 67202
PHONE: 316-303-3000
FAX: 316-462-5629

CONSULTANTS:
LK ARCHITECTURE, INC.
345 RIVERVIEW
SUITE 200
WICHITA, KANSAS 67208
PHONE: 316-268-0230

SYCAMORE STREET IMPROVEMENTS
WICHITA, KANSAS
CITY OF WICHITA

REVISIONS:

MARK	DATE	DESCRIPTION

PROJ NO: 472-85463
SCALE: 1"=10'
DATE: 6/1/2020
DESIGNED BY: TAU
DRAWN BY: TAU
CHECKED BY: MDB

SHEET TITLE:
SYCAMORE STREET WATER LINE IMPROVEMENTS

SHEET NO.
79
SHEET 79 OF 97

tau.mdb 6/1/2020 12:22:13 PM c:\tran\systems\paw\taumdb\0894545\C:\VTR-M01-101.dgn