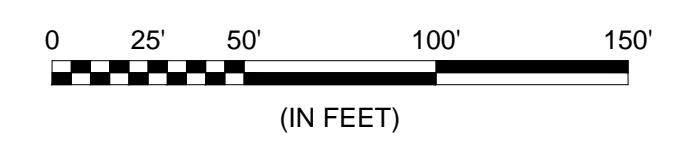
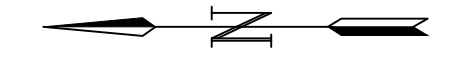




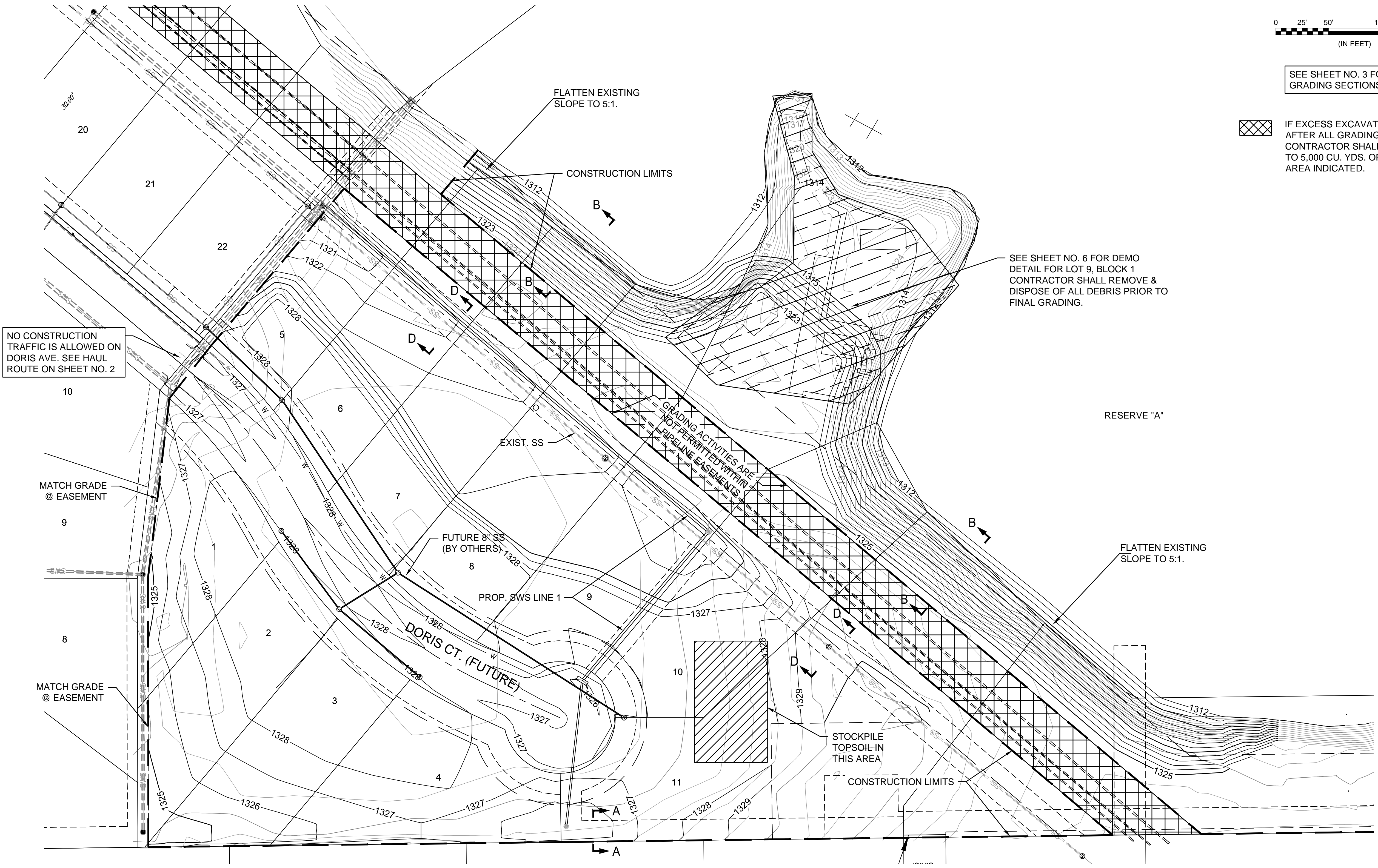
© 2020 GARVER, LLC
 THIS DOCUMENT, ALONG WITH THE IDEAS AND DESIGNS CONVEYED HEREIN, SHALL BE CONSIDERED INSTRUMENTS OF PROFESSIONAL SERVICE AND ARE PROPERTY OF GARVER, LLC. ANY USE, REPRODUCTION, OR DISTRIBUTION OF THIS DOCUMENT, ALONG WITH THE IDEAS AND DESIGN CONTAINED HEREIN, IS PROHIBITED UNLESS AUTHORIZED IN WRITING BY GARVER, LLC OR EXPLICITLY ALLOWED IN THE GOVERNING PROFESSIONAL SERVICES AGREEMENT FOR THIS WORK.

8535 E. 21st St. N.
 Suite 130
 Wichita, KS 67206
 (316) 264-8008



SEE SHEET NO. 3 FOR TYPICAL GRADING SECTIONS.

IF EXCESS EXCAVATION IS AVAILABLE AFTER ALL GRADING IS COMPLETED CONTRACTOR SHALL STOCKPILE UP TO 5,000 CU. YDS. OF TOPSOIL IN THE AREA INDICATED.



SEE SHEET NO. 6 FOR DEMO DETAIL FOR LOT 9, BLOCK 1 CONTRACTOR SHALL REMOVE & DISPOSE OF ALL DEBRIS PRIOR TO FINAL GRADING.

SITE GRADING NORTH

File: L:\2019\19T41016 - Emerald Bay 4th PH 2\Drawings\C3D\Storm Sewer\Site Grading Plan-North.dwg Last Save: 4/30/2020 11:18 AM Last saved by: E.Clover
 Last plotted by: Standrich, Dairy R. Plot Style: --- Plot Scale: 1:2,5849 Plot Date: 5/5/2020 10:57 AM Plotter Used: None

REV.	DATE	DESCRIPTION	BY



CITY OF WICHITA
 WICHITA, KANSAS
 EMERALD BAY 4th ADD.
 PHASE 2 - SWS

Site Grading North

JOB NO.: 19T41016
 DATE: MAY 2020
 DESIGNED BY: ----
 DRAWN BY: ----

BAR IS ONE INCH ON ORIGINAL DRAWING
 IF NOT ONE INCH ON THIS SHEET, ADJUST SCALES ACCORDINGLY.

DRAWING NUMBER