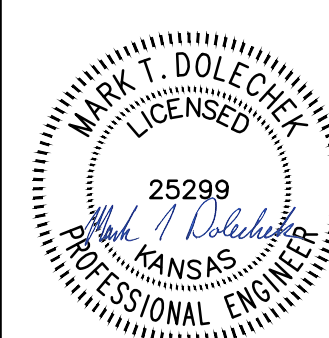




© 2018 GARVER, LLC
 THIS DOCUMENT, ALONG WITH THE IDEAS AND DESIGNS CONVEYED HEREIN, SHALL BE CONSIDERED INSTRUMENTS OF PROFESSIONAL SERVICE AND ARE PROPERTY OF GARVER, LLC. ANY USE, REPRODUCTION, OR DISTRIBUTION OF THIS DOCUMENT, ALONG WITH THE IDEAS AND DESIGN CONTAINED HEREIN, IS PROHIBITED UNLESS AUTHORIZED IN WRITING BY GARVER, LLC OR EXPLICITLY ALLOWED IN THE GOVERNING PROFESSIONAL SERVICES AGREEMENT FOR THIS WORK.



Digitally Signed 07/24/2020

REV.	DATE	DESCRIPTION	BY



CITY OF WICHITA
 WICHITA, KANSAS
 Sanitary Sewer from
 Lift Station 47

SS Line 2

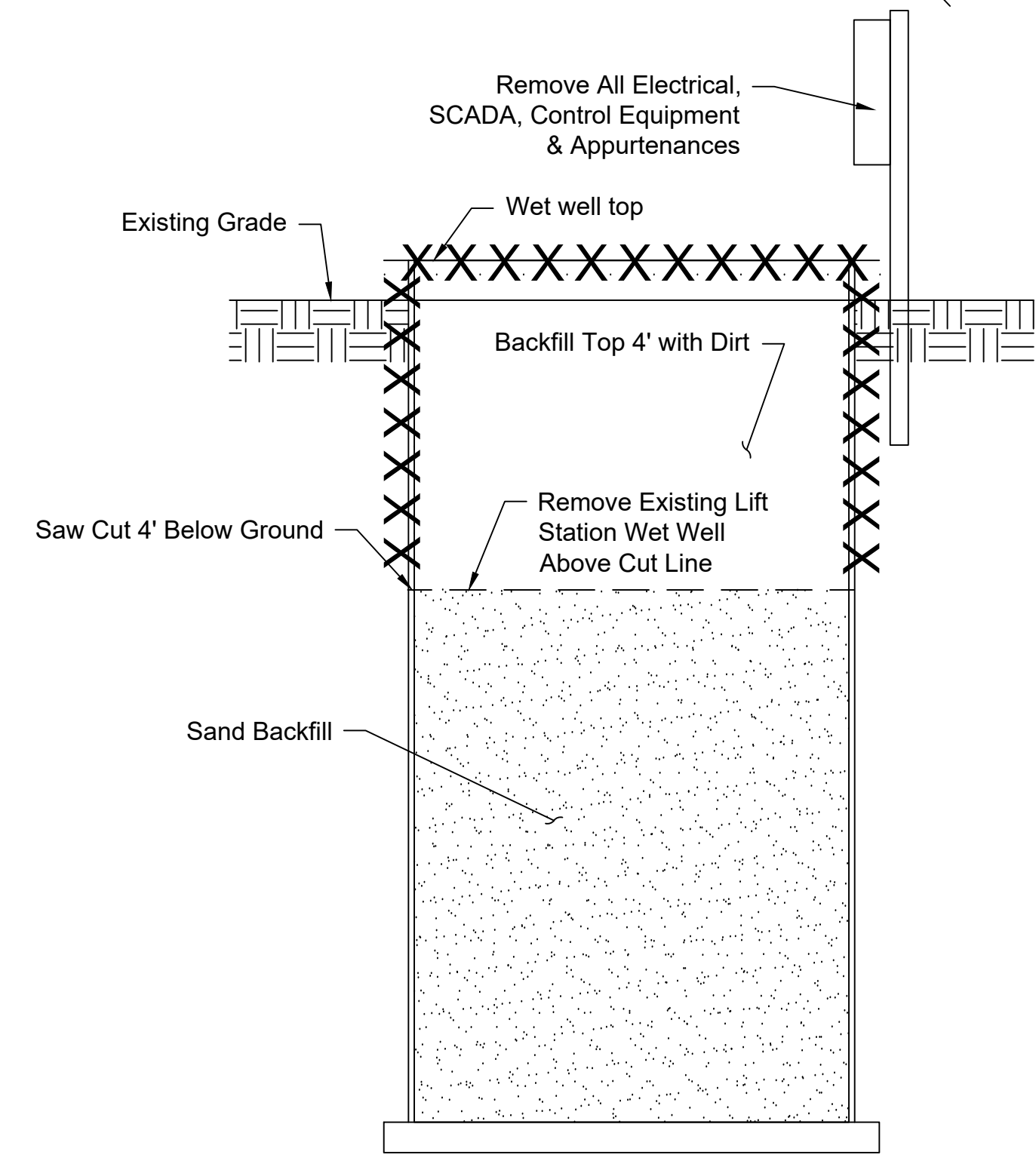
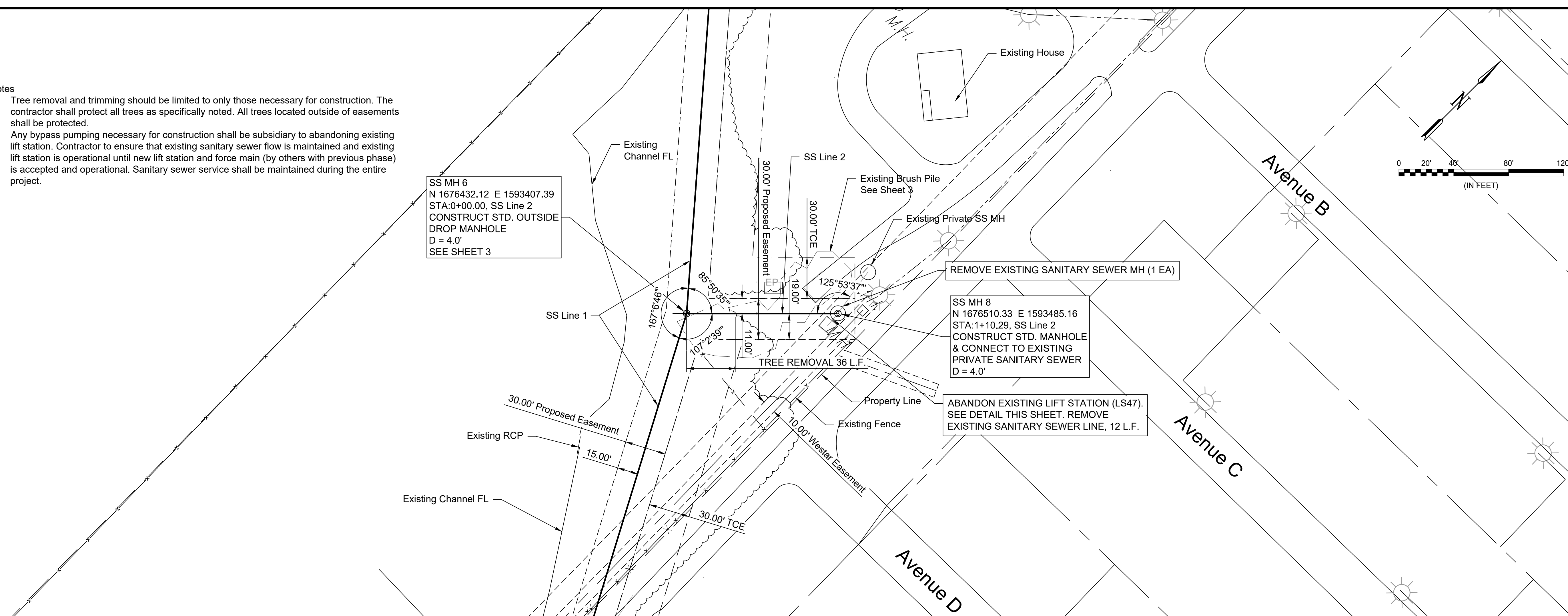
JOB NO.: 19T41008
 DATE: Jul 2020
 DESIGNED BY: MTD
 DRAWN BY: MCP

BAR IS ONE INCH ON ORIGINAL DRAWING
 IF NOT ONE INCH ON THIS SHEET, ADJUST SCALES ACCORDINGLY.

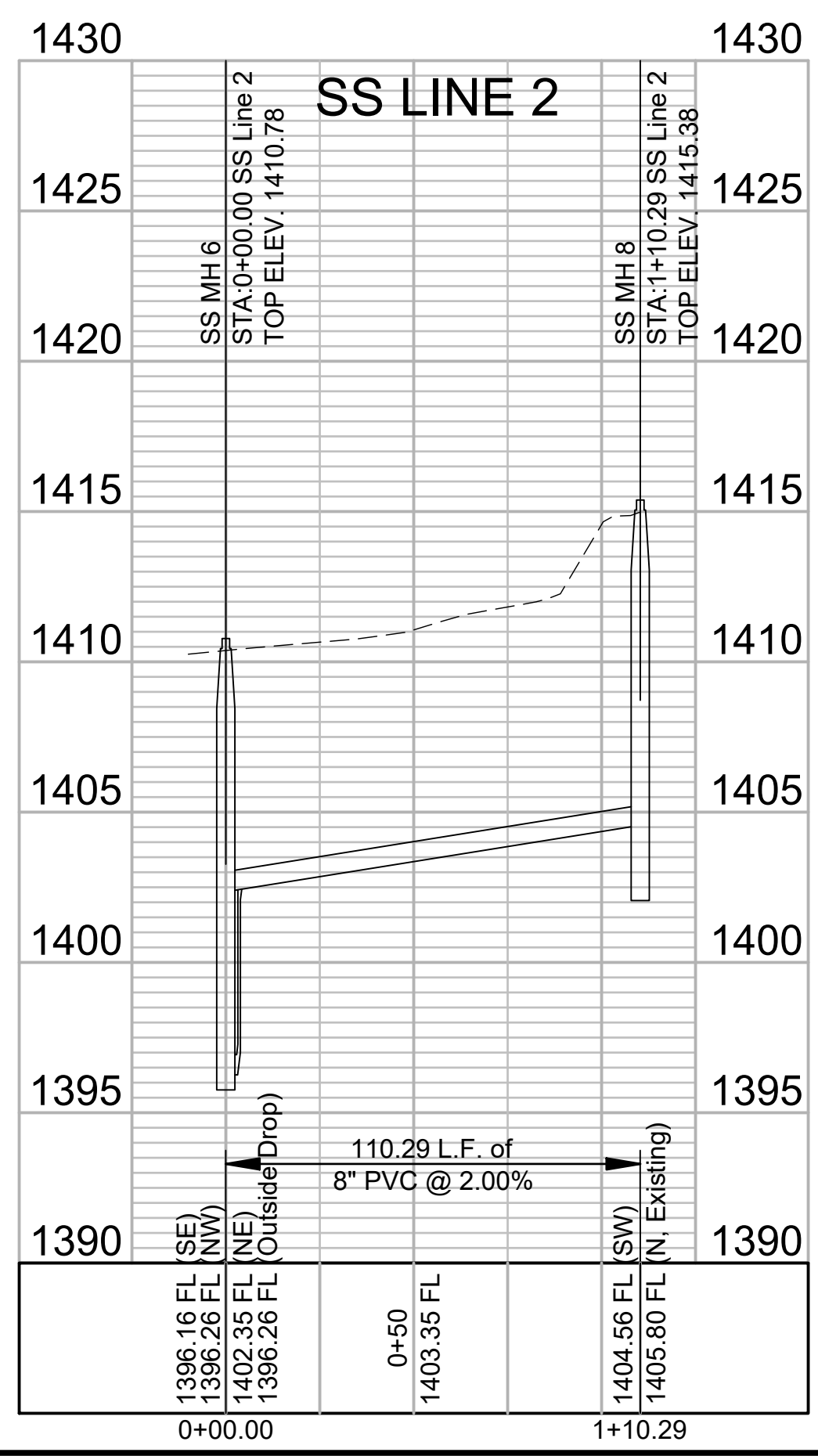
DRAWING NUMBER

SHEET NUMBER **4** OF **15**

- Notes
1. Tree removal and trimming should be limited to only those necessary for construction. The contractor shall protect all trees as specifically noted. All trees located outside of easements shall be protected.
 2. Any bypass pumping necessary for construction shall be subsidiary to abandoning existing lift station. Contractor to ensure that existing sanitary sewer flow is maintained and existing lift station is operational until new lift station and force main (by others with previous phase) is accepted and operational. Sanitary sewer service shall be maintained during the entire project.



- Notes for Detail
1. Pumps, electrical, SCADA, and control equipment to be salvaged to City of Wichita.



File: L:\2019\19T41008 - CoW Sanitary Sewer to LS47\Drawings\CAD\Plan Sheets\SS Line 2.dwg Last Save: 7/24/2020 8:21 AM Last saved by: MTDolechek
 Last plotted by: Dolechek, Mark T. Plot Style: --- Plot Scale: 1:2.565 Plot Date: 7/24/2020 8:27 AM Plotter used: None