

GENERAL NOTES

- THE CONTRACTOR SHALL COMPLY WITH ALL APPLICABLE SAFETY REGULATIONS. ALL CONSTRUCTION SHALL BE COMPLETED FOLLOWING CURRENT CITY STANDARD SPECIFICATIONS AND SPECIAL PROVISIONS.
- CONTRACTOR WILL BE REQUIRED TO PROVIDE NOTICE TO UTILITY COMPANIES A MINIMUM OF SEVENTY-TWO (72) HOURS PRIOR TO ANY EXCAVATION, AS FOLLOWS:
KANSAS ONE-CALL 687-2470
THE CONTRACTOR MUST NOTIFY THE FOLLOWING IN CASE OF AN EMERGENCY:
AT&T 1-800-246-8464
BLACK HILLS ENERGY (GAS) 1-800-694-8989
CITY OF WICHITA WATER & SEWER 1-316-219-8921
CITY OF WICHITA STORMWATER 1-316-268-4090
CITY OF WICHITA TRAFFIC 1-316-268-4034
COX COMMUNICATIONS 1-888-249-3530
KANSAS GAS SERVICE 1-888-482-4950
WESTAR ENERGY 1-800-544-4857
- UTILITY SERVICE LINES, POLES, ETC. ARE TO BE ADJUSTED AS NECESSARY BY OTHERS PRIOR TO CONSTRUCTION UNLESS THE PLANS SPECIFICALLY CALL FOR THEIR ADJUSTMENT BY THE CONTRACTOR OR UNLESS THE PLANS SPECIFICALLY IDENTIFY A UTILITY TO BE ADJUSTED BY ITS OWNER DURING CONSTRUCTION. EXISTING UTILITIES AND THEIR LOCATION, AS SHOWN ON THE PLANS, REPRESENT THE BEST INFORMATION OBTAINABLE FOR DESIGN. THE CONTRACTOR WILL BE REQUIRED TO WORK AROUND EXISTING UTILITIES WITHIN THE RIGHT-OF-WAY WHICH DO NOT CONFLICT WITH PROPOSED CONSTRUCTION.
- RUBBLE FROM THE REMOVAL OF MISCELLANEOUS STRUCTURES AND EXCESS EXCAVATION WHICH IS TO BE WASTED SHALL BE DISPOSED OF ON SITES TO BE PROVIDED BY THE CONTRACTOR. THESE SITES SHALL BE APPROVED BY THE ENGINEER AS TO SUITABILITY, APPEARANCE AND SITE LOCATION. LOCATIONS, IN THE OPINION OF THE ENGINEER, THAT WILL LEAVE AN UNSIGHTLY APPEARANCE WILL NOT BE APPROVED. ALL DISPOSAL SITES MUST BE APPROVED BY THE KANSAS DEPARTMENT OF HEALTH AND ENVIRONMENT. MATERIAL EITHER STOCKPILED OR DISPOSED OF IN A FLOOD PLAIN WILL REQUIRE A KANSAS STATE BOARD OF AGRICULTURE PERMIT. ANY MATERIAL DUMPED IN WATERS OF THE UNITED STATES OR WETLANDS IS SUBJECT TO U.S. CORPS OF ENGINEERS PERMITTING REGULATIONS. ANY MATERIAL BURIED OR STOCKPILED BEYOND APPROVED CONSTRUCTION LIMITS WILL REQUIRE ADDITIONAL ARCHAEOLOGICAL INVESTIGATIONS UNLESS BURIED IN A PREVIOUSLY APPROVED BORROW LOCATION.
- TREES AND SHRUBS IN PUBLIC RIGHT-OF-WAY WHICH ARE IN DIRECT CONFLICT WITH PROPOSED NEW CONSTRUCTION SHALL BE REMOVED BY THE CONTRACTOR WITH THE CITY ENGINEER'S APPROVAL. TREES AND SHRUBS WHICH ARE NOT IN DIRECT CONFLICT WITH PROPOSED NEW CONSTRUCTION SHALL BE SAVED AND PROTECTED FROM DAMAGE.
- THE CONTRACTOR SHALL GIVE ALL PROPERTY OWNERS AND/OR TENANTS OF DEVELOPED PROPERTY ABUTTING THE CONSTRUCTION OF THIS PROJECT A MINIMUM OF TEN (10) DAYS NOTICE PRIOR TO START OF CONSTRUCTION.
- THE CONTRACTOR SHALL BE RESPONSIBLE FOR PRESERVING PROPERTY IRONS. THE CONTRACTOR WILL BE REQUIRED TO RE-ESTABLISH ANY PROPERTY IRONS WHICH ARE DAMAGED OR DESTROYED BY HIS CONSTRUCTION OPERATIONS. SUCH IRONS SHALL BE RE-ESTABLISHED BY A LICENSED LAND SURVEYOR IN ACCORDANCE WITH STATE LAWS.
- THE ENGINEERING DIVISION SHALL FIELD LOCATE WATER VALVES ONE TIME DURING CONSTRUCTION WHEN REQUESTED BY THE CONTRACTOR. IT SHALL BE THE CONTRACTOR'S RESPONSIBILITY TO PRESERVE SUCH FIELD LOCATIONS DURING THE CONSTRUCTION PROCESS. WATER VALVES, VALVE BOXES OR FIRE HYDRANTS DAMAGED DURING CONSTRUCTION SHALL BE REPAIRED BY CONTRACTOR AT HIS OWN EXPENSE. VALVE BOXES AND WATER METERS WITHIN THE PROJECT LIMITS SHALL BE ADJUSTED TO MATCH FIELD GRADES BY THE CONTRACTOR.
- IF TRAFFIC WILL BE IMPACTED BY CONSTRUCTION, A TRAFFIC CONTROL PLAN MUST BE SUBMITTED AND APPROVED BY THE CITY TRAFFIC ENGINEER, AT traffic@wichita.gov BEFORE CONSTRUCTION CAN BEGIN. THE CONTRACTOR SHALL BE RESPONSIBLE FOR ALL TRAFFIC CONTROL MEASURES TO FACILITATE CONSTRUCTION. ALL CONSTRUCTION ZONE MARKINGS AND SIGNAGE SHALL CONFORM TO THE LATEST VERSION OF THE MANUAL ON UNIFORM TRAFFIC CONTROL DEVICES (MUTCD) AS PUBLISHED BY THE US DEPT. OF TRANSPORTATION, FEDERAL HIGHWAY ADMINISTRATION. ALL COSTS ASSOCIATED WITH CONSTRUCTION MARKINGS AND SIGNAGE SHALL BE THE CONTRACTOR'S RESPONSIBILITY.
- ALL AREAS DISTURBED DURING CONSTRUCTION THAT WILL NOT BE UNDER PROPOSED PAVEMENT SHALL BE SEEDED AND MULCHED. COST SHALL BE CONSIDERED SUBSIDIARY TO PROJECT SEEDING.
- CONTRACTOR SHALL LIMIT THE EXTENT OF TRENCH OPEN OVERNIGHT AND WEEKENDS TO LESS THAN 50 FEET.
- EXISTING UTILITIES AND THEIR LOCATION, AS SHOWN ON THE PLANS REPRESENT THE BEST INFORMATION OBTAINABLE FOR DESIGN. LOCATION INFORMATION HAS BEEN OBTAINED FROM THE VARIOUS COMPANIES AND IS EITHER FROM COMPANY UTILITY DRAWINGS OR COMPANY PROVIDED FIELD LOCATIONS. THE PLAN LOCATIONS SHOWN ARE NOT GUARANTEED. ADDITIONAL EXISTING UTILITIES MAY ALSO BE ENCOUNTERED.
- A PORTION OF EXCESS EXCAVATED MATERIAL SHALL BE MOUND AROUND MANHOLES WHICH EXTEND MORE THAN ONE (1) FOOT ABOVE THE EXISTING GROUND. SUCH MOUND SHALL BE CONSTRUCTED WITH NEW DEVELOPMENT A SIX (6) FOOT DIAMETER FLAT TOP WITH 4 TO 1 SIDE SLOPES DOWN TO THE ORIGINAL GROUND. THE ELEVATION OF THE FLAT TOP OF THE MOUND SHALL BE 0.4 FOOT BELOW THE TOP OF THE MANHOLE.
- CONTRACTOR SHALL PROVIDE POSITIVE DRAINAGE AWAY FROM ALL MANHOLE COVERS.
- ALL STUBS AND PLUGGED PIPES SHALL BE LOCATED WITH GREEN PLASTIC TAPE IN THE SAME MANNER AS RISERS.
- CONNECTING TO EXISTING MANHOLES:
PRIOR TO LAYING SEWER LINES USING EXISTING STUBS IN EXISTING MANHOLES, THE CONTRACTOR SHALL EXPOSE AND VERIFY THE ELEVATION, GRADE AND ALIGNMENT OF EXISTING STUBS AND NOTIFY THE ENGINEER OF ANY DEVIATION FROM THE PLANS. WHERE CONNECTION TO AN EXISTING MANHOLE THAT DOES NOT HAVE AN EXISTING STUB OR THE STUB IS UNUSABLE DUE TO ELEVATION GRADE OR ALIGNMENT, THE CONTRACTOR SHALL BORE CUT INTO EXISTING MANHOLE WALL TO MAKE CONNECTION USING APPROVED WATER STOP GASKET, AND RESHAPE THE EXISTING MANHOLE INVERT TO PROVIDE SMOOTH FLOW. THE COST TO CONNECTING TO EXISTING MANHOLES IS INCIDENTAL TO THE PROJECT.
- THE CONTRACTOR SHALL PREVENT ANY CONSTRUCTION DEBRIS FROM ENTERING THE EXISTING SANITARY SEWER DURING CONSTRUCTION.
- THE CONTRACTOR SHALL BE RESPONSIBLE FOR MAINTAINING CONTINUOUS FLOW OF SEWAGE THROUGH CONSTRUCTION. CONTRACTOR'S PROPOSED METHOD FOR MAINTAINING SEWAGE FLOW SHALL BE SUBMITTED AND APPROVED BY THE SEWER MAINTENANCE DIVISION (316-268-4073) PRIOR TO STARTING AND BY-PASSING OF SEWAGE FLOWS.
- ALL TRAFFIC CONTROL DEVICES IN THE WORK ZONE (INCLUDING MARKINGS AND SIGNS) AND THEIR INSTALLATION AND MAINTENANCE SHALL COMPLY WITH THE LATEST EDITION OF THE MANUAL ON UNIFORM TRAFFIC CONTROL DEVICES (MUTCD). ALL TRAFFIC CONTROL DEVICES IN THE TRAVELED WAY OR CLEAR ZONE SHALL BE CRASHWORTHY (NCHRP REPORT 350 OR MASH COMPLIANT).
http://safety.fhwa.dot.gov/roadwaydept/policy/guide/road_hardware/wzd
- ALL CONSTRUCTION EQUIPMENT, INCLUDING VEHICLES, MATERIALS, AND DEBRIS, SHALL BE STORED OUTSIDE OF THE CLEAR ZONE. WHERE THIS CANNOT BE ACHIEVED THE CONTRACTOR SHALL PLACE APPROPRIATE SIGNS, OBJECT IDENTIFIERS, AND/OR BARRICADES IN COMPLIANCE WITH MUTCD.
- EXCEPT WHEN REQUIRED FOR SAFETY, TRAFFIC CONTROL SHALL NOT BLOCK ANY LANES OR SIDEWALKS WHEN WORK IS NOT BEING PERFORMED.
- FOLLOW THE LINK BELOW FOR DETAILS ON SPECIFIC CITY OF WICHITA STANDARD DETAILS:
<http://www.wichita.gov/PWU/Pages/Regulations.aspx>
- DEVELOPER FOR THIS PROJECT IS:
SCHELLENBERG PROPERTIES, LLC
7926 WEST 21st STREET
WICHITA, KANSAS 67205
MARVIN L. SCHELLENBERG, MEMBER
316-721-2153

SANITARY SEWER

TO SERVE

ESTANCIA SECOND ADDITION

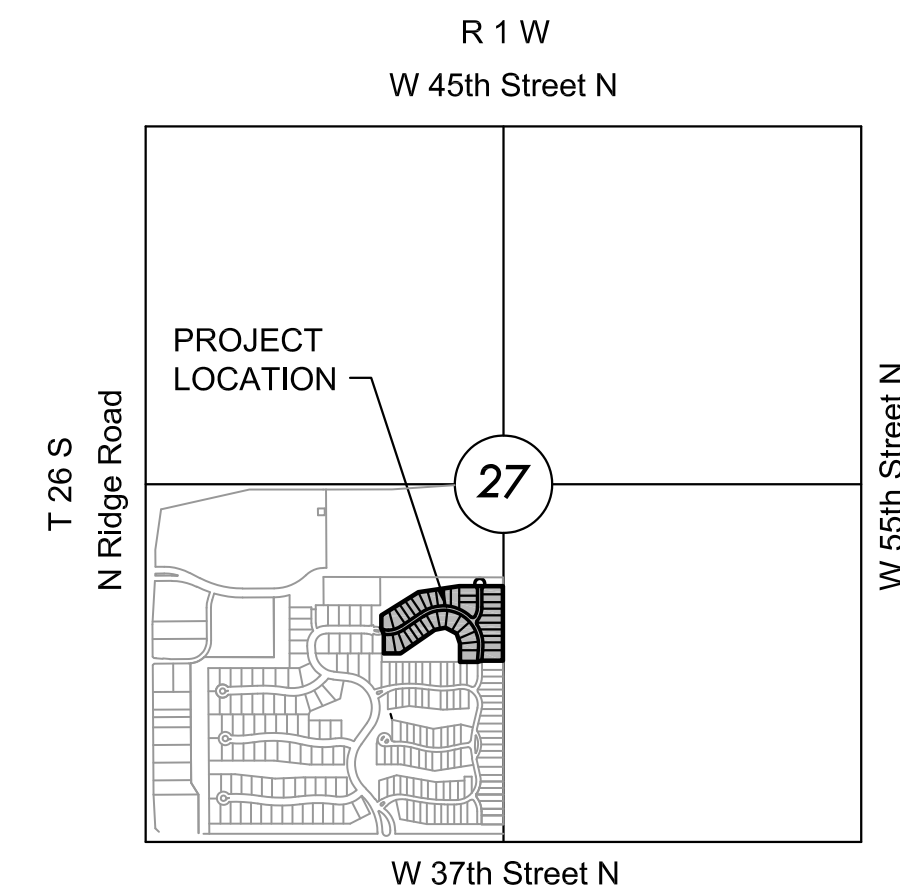
PHASE 1

PROJECT NO. 468-2019-014830

THE CITY OF WICHITA, KANSAS
GARY JANZEN, P.E. - CITY ENGINEER

OCA NO. 744514

Nowak Construction - Contractor
B. Woods - City of Wichita, Field Project Engineer
S. Stripling - City of Wichita, Inspector
As-built
Stubs & Risers
Release Date (for connection purposes only): 5/11/2020
Completion Date: 7/15/2020
pdf: apr 5/12/2020



VICINITY MAP

No Scale



INDEX TO DRAWINGS

SHEET NO.	DESCRIPTION
01	COVER SHEET
02-04	DETAILS
05	LINE 1 & 2
06	LINE 2 & 2A
07	LINE 3
08-09	BUBBLE MAP
10-14	BMP SHEETS
15	FINAL PLAT

BENCHMARKS

DATUM:
THE HORIZONTAL DATUM IS BASED ON THE KANSAS COORDINATE SYSTEM OF 1983(2011), SOUTH ZONE. COORDINATES SHOWN HAVE BEEN MODIFIED TO THE GROUND USING A COMBINED ADJUSTMENT FACTOR OF 1.0001200144. STATE PLANE COORDINATES CAN BE CALCULATED BY MULTIPLYING THE SHOWN VALUES BY 0.99988.

ALL ELEVATIONS SHOWN ARE BASED ON THE NAVD 88 VERTICAL DATUM.

BM#52 PLUS CUT/SQUARE CUT AT SOUTHWEST CORNER OF CURB INLET WEST SIDE OF SOLANO ST., 600 FEET NORTH OF 37TH ST. N., 28 FEET NORTH OF NORTH EDGE OF PARKING STALLS.
NORTHING = 1710171.016 EASTING = 1625356.019
ELEV. = 1334.12' NAVD 88

BM#53 PLUS CUT ON CITY OF WICHITA DISC AT TOP OF CURB, WEST SIDE OF ESTANCIA STREET, THREE FEET SOUTH OF CURB INLET, 600 FEET NORTH OF MAIN ENTRANCE AT 37TH ST. N.
NORTHING = 1710142.067 EASTING = 1624443.448
ELEV. 1333.50' NAVD 88

BM#57 PKN AND WASHER DRILLED INTO TOP OF CURB AT NORTHWEST CORNER OF 8 CAR PARKING BAY ON EAST SIDE OF CLUB HOUSE WEST SIDE OF SOLANO ST.
NORTHING = 1710607.21 EASTING = 1625354.12
ELEV. 1334.48' NAVD 88

BM#58 PKN AND WASHER DRILLED INTO NORTHEAST CORNER OF CURB INLET, EAST SIDE OF ESTANCIA ST., 70 FEET NORTH OF COLLINA ST.
NORTHING = 1710768.55 EASTING = 1624579.04
ELEV. 1333.63' NAVD 88



SANITARY SEWER PLANS FOR
ESTANCIA SECOND ADDITION
 PHASE 1

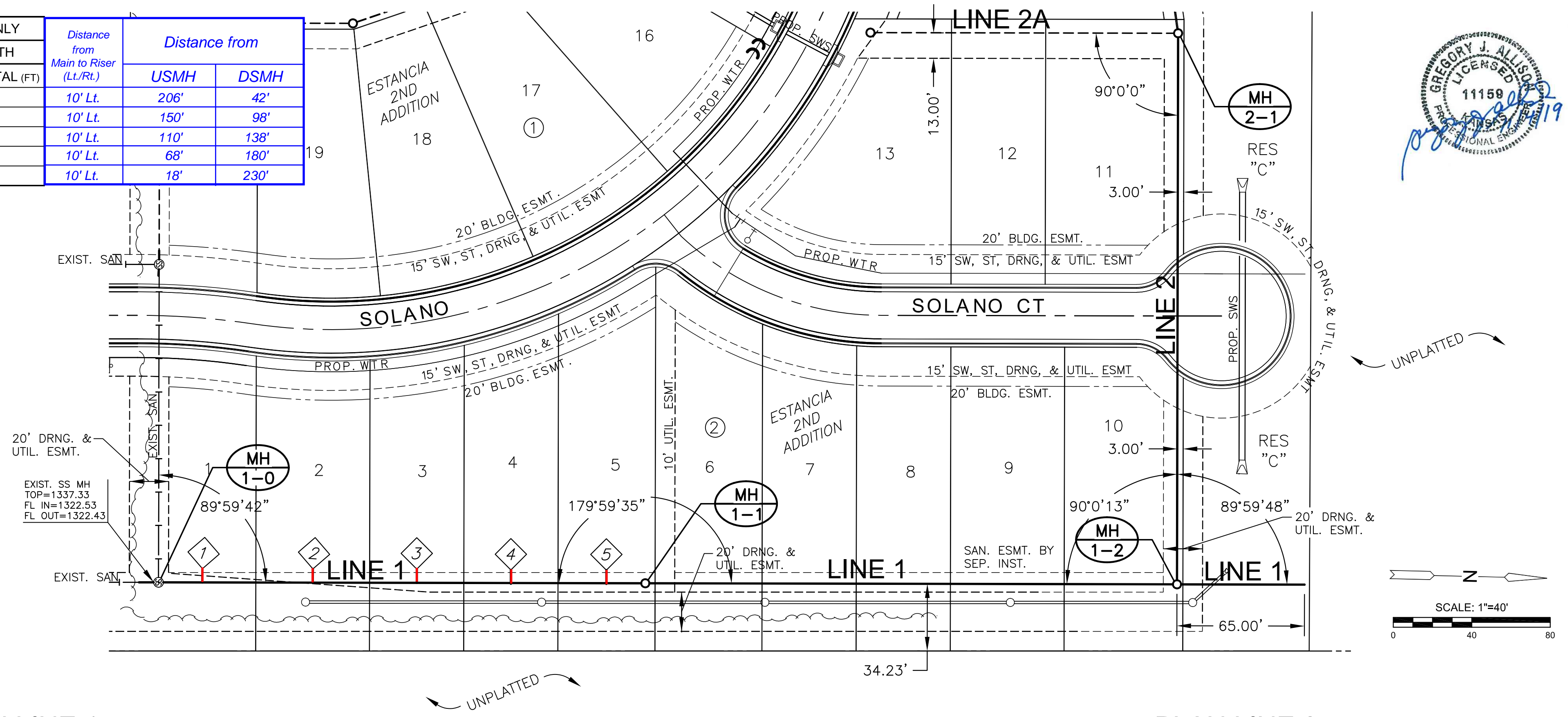
©2019
MKEC Engineering
All Rights Reserved
www.mkec.com
These drawings and their contents, including, but not limited to, all concepts, designs, & ideas are the exclusive property of MKEC Engineering (MKEC), and may not be used or reproduced in any way without the express consent of MKEC.

COVER SHEET

PROJECT NO.	468-2019-014830	
DATE	NOV. 2019	
SCALE	1" = 200'	
DESIGNED	DRAWN	CHECKED
DFL	RWB	DFL
NO.	REVISION	DATE
SHEET NO.	01 OF 15	

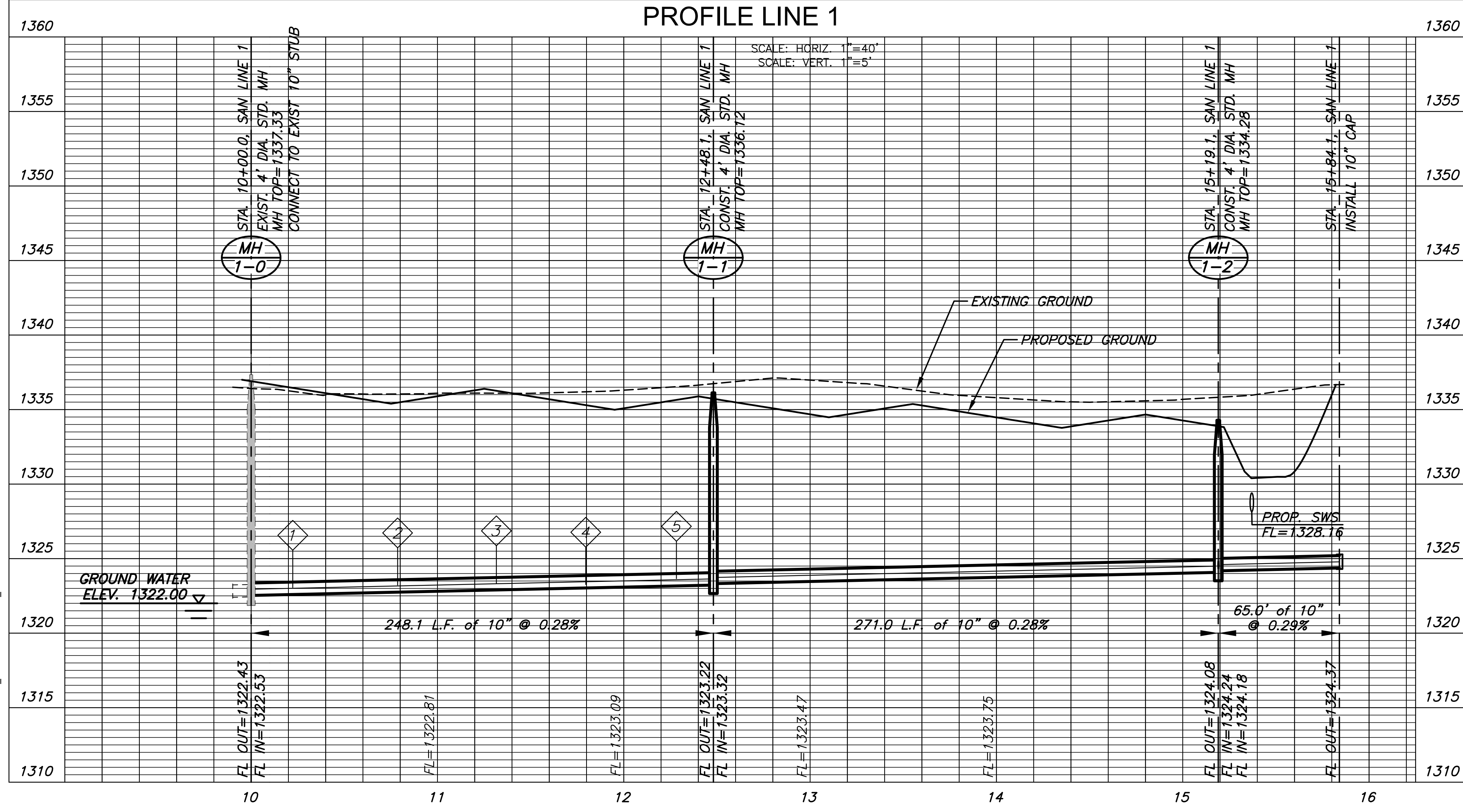
PLOTED: Friday, November 01, 2019 @ 02:26PM

SEWER SERVICE RISER TABLE					FOR INFORMATION ONLY			Distance from			
NO.	TYPE	LOCATION			STATION	DIRECTION	APPROXIMATE LENGTH		Main to Riser (Lt./Rt.)	Distance from	
		LOT NO.	BLOCK NO.	LINE NO.			VERTICAL (FT)	HORIZONTAL (FT)		USMH	DSMH
1	4" TEE	1	2	1	10+42	LT.	8'	10'	10' Lt.	206'	42'
2	4" TEE	2	2	1	10+98	LT.	8'	10'	10' Lt.	150'	98'
3	4" TEE	3	2	1	11+38	LT.	8'	10'	10' Lt.	110'	138'
4	4" TEE	4	2	1	11+80	LT.	8'	10'	10' Lt.	68'	180'
5	4" TEE	5	2	1	12+30	LT.	8'	10'	10' Lt.	18'	230'

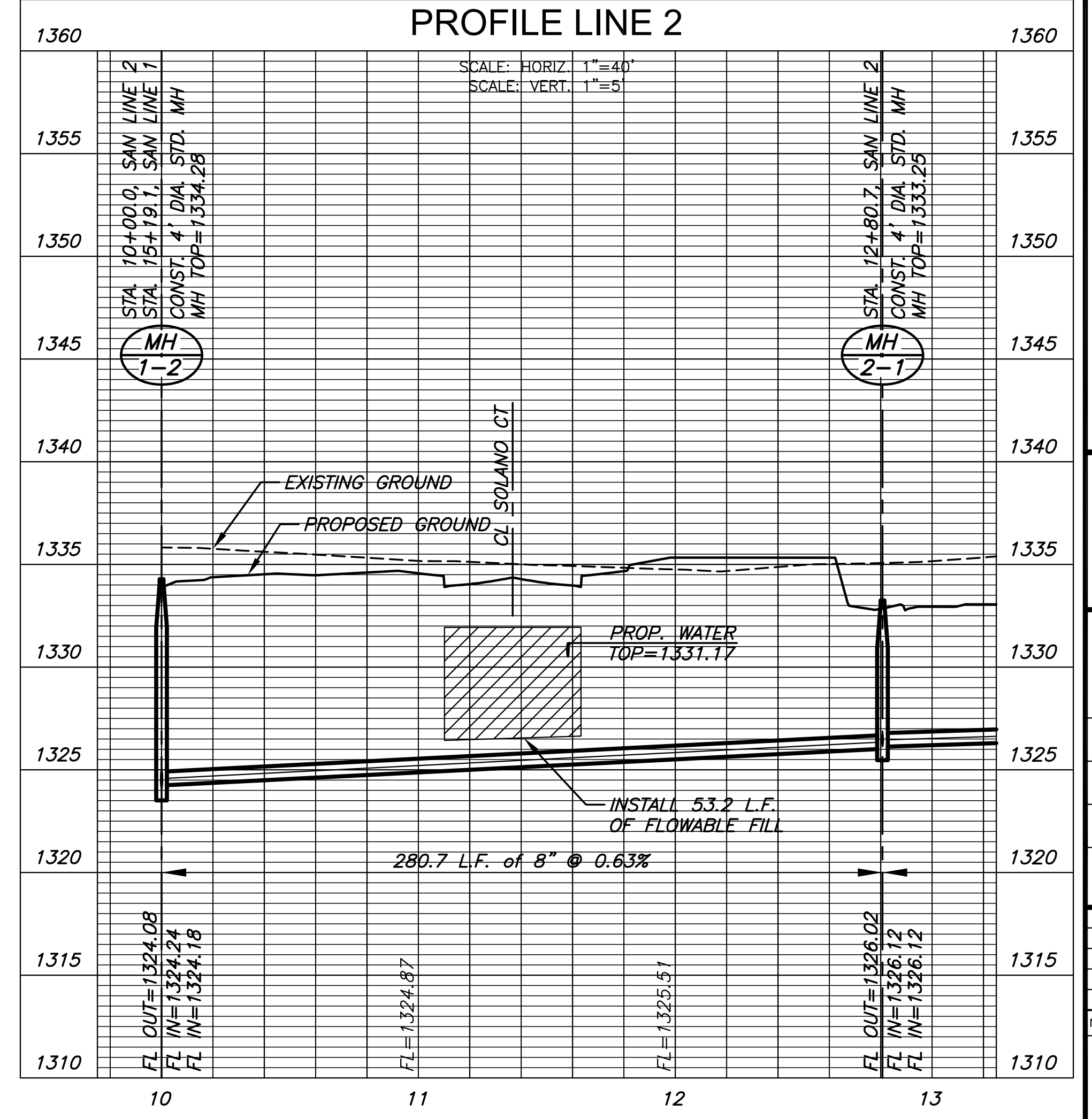


NOTE:
CONTRACTOR TO VERIFY THE DEPTH AND LOCATION OF EXISTING UTILITIES PRIOR TO CONSTRUCTION.

**PLAN LINE 1
PROFILE LINE 1**



**PLAN LINE 2
PROFILE LINE 2**



SANITARY SEWER PLANS FOR
ESTANCIA SECOND ADDITION
 PHASE 1

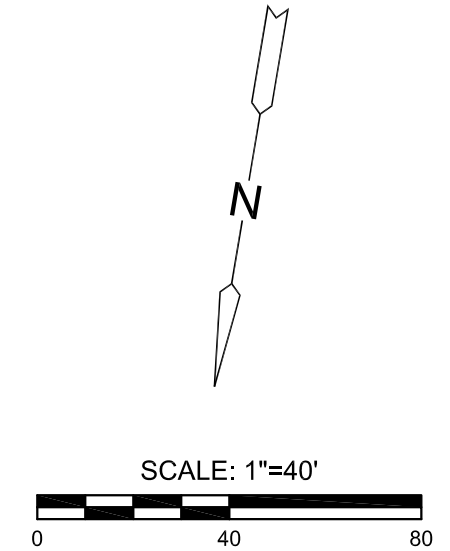
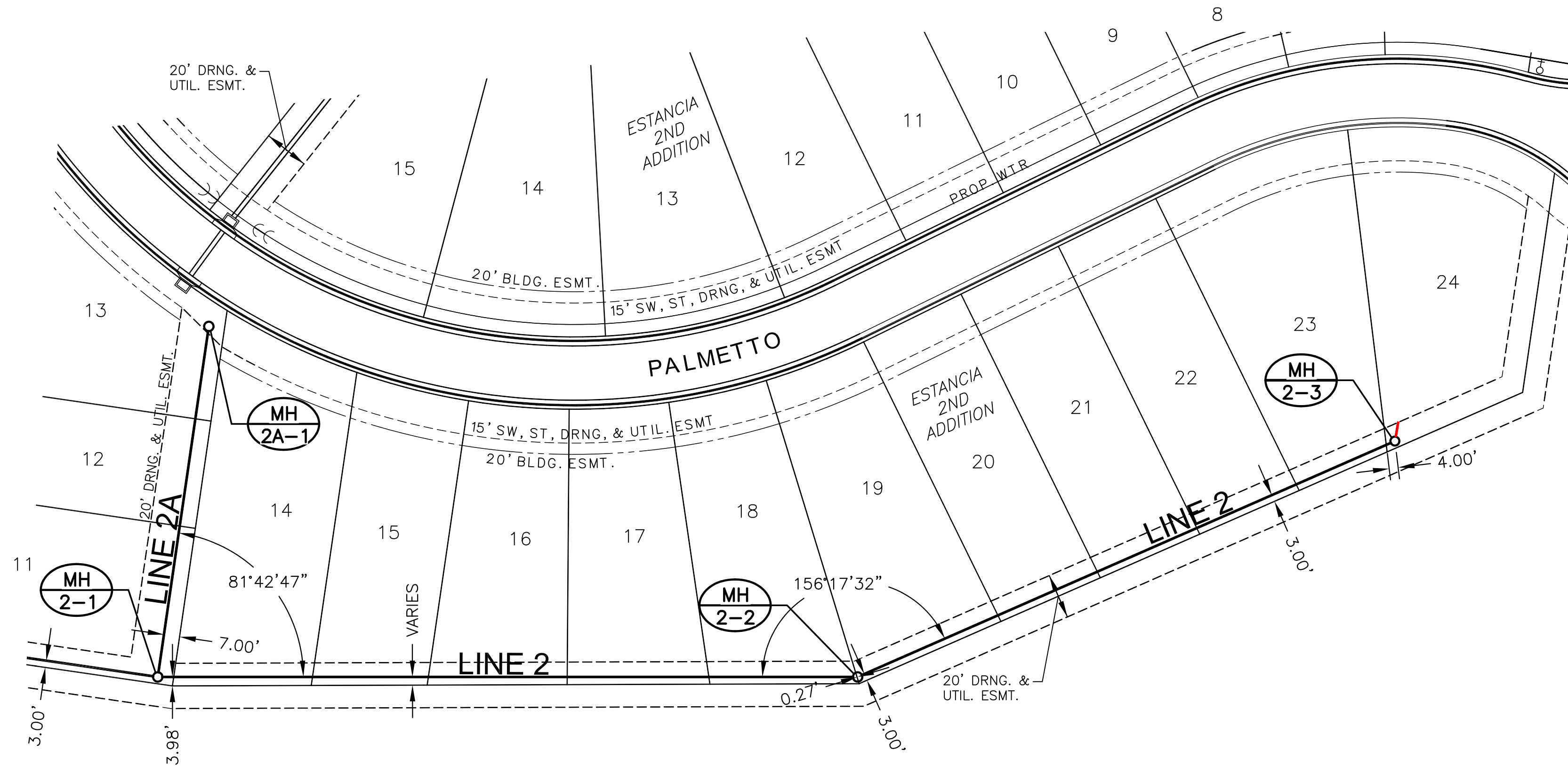
©2019 MKEC Engineering All Rights Reserved
www.mkec.com
These drawings and their contents, including, but not limited to, all concepts, designs, & ideas are the exclusive property of MKEC Engineering (MKEC), and may not be used or reproduced in any way without the express consent of MKEC.

SAN LINE 1 & 2

PROJECT NO.	468-2019-014830	
DATE	OCT. 2019	
SCALE	1" = 40'	
DESIGNED	DRAWN	CHECKED
DFL	RWB	DFL

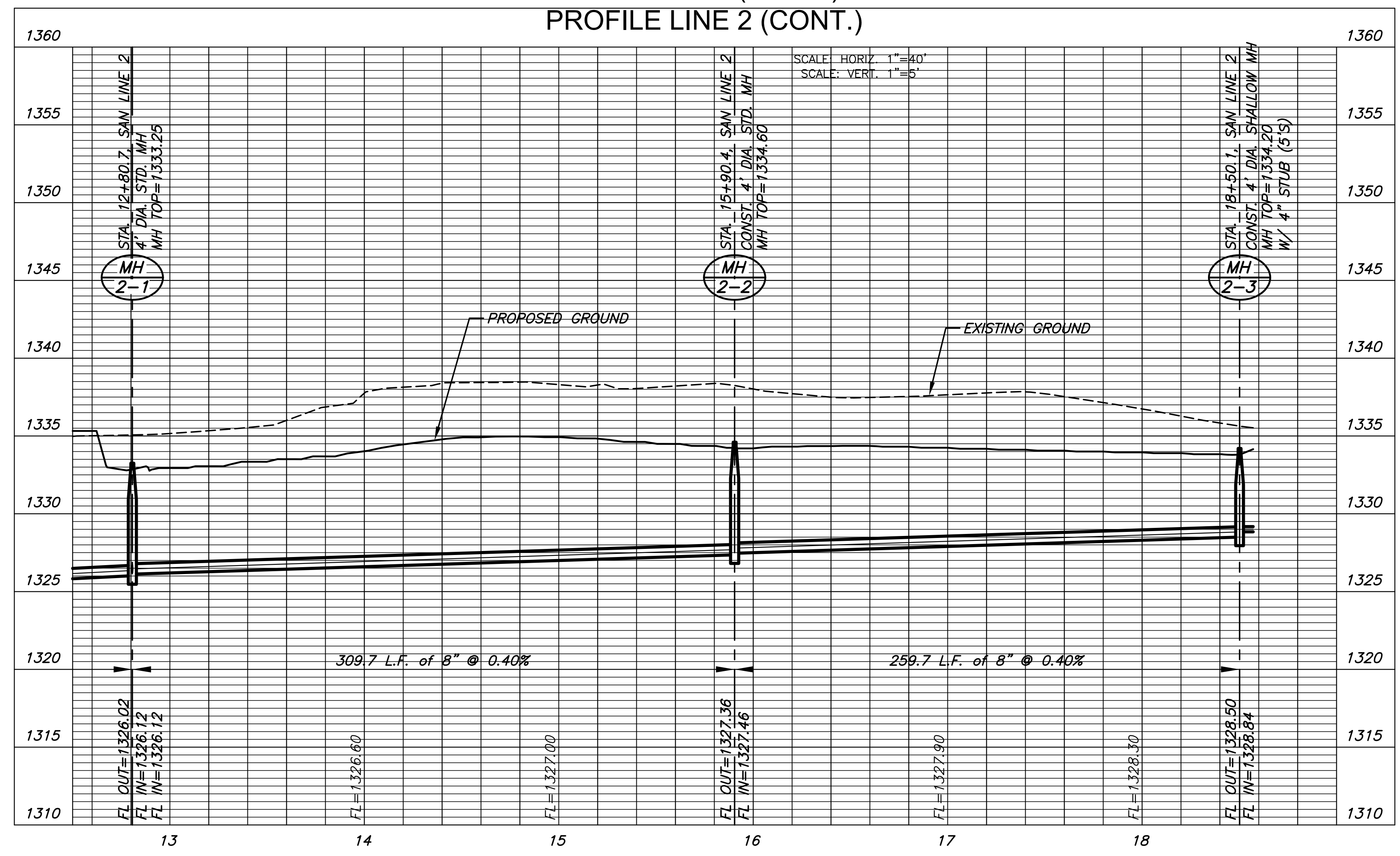
NO.	REVISION	DATE
SHEET NO.		
05 OF 15		

J:\PROJECTS\2019\10\01\02\38_ESTANCIA_SECOND_18338_CAD\SHS\05_CIVIL\SAN\PHASE 1\18338-05-2019.DWG

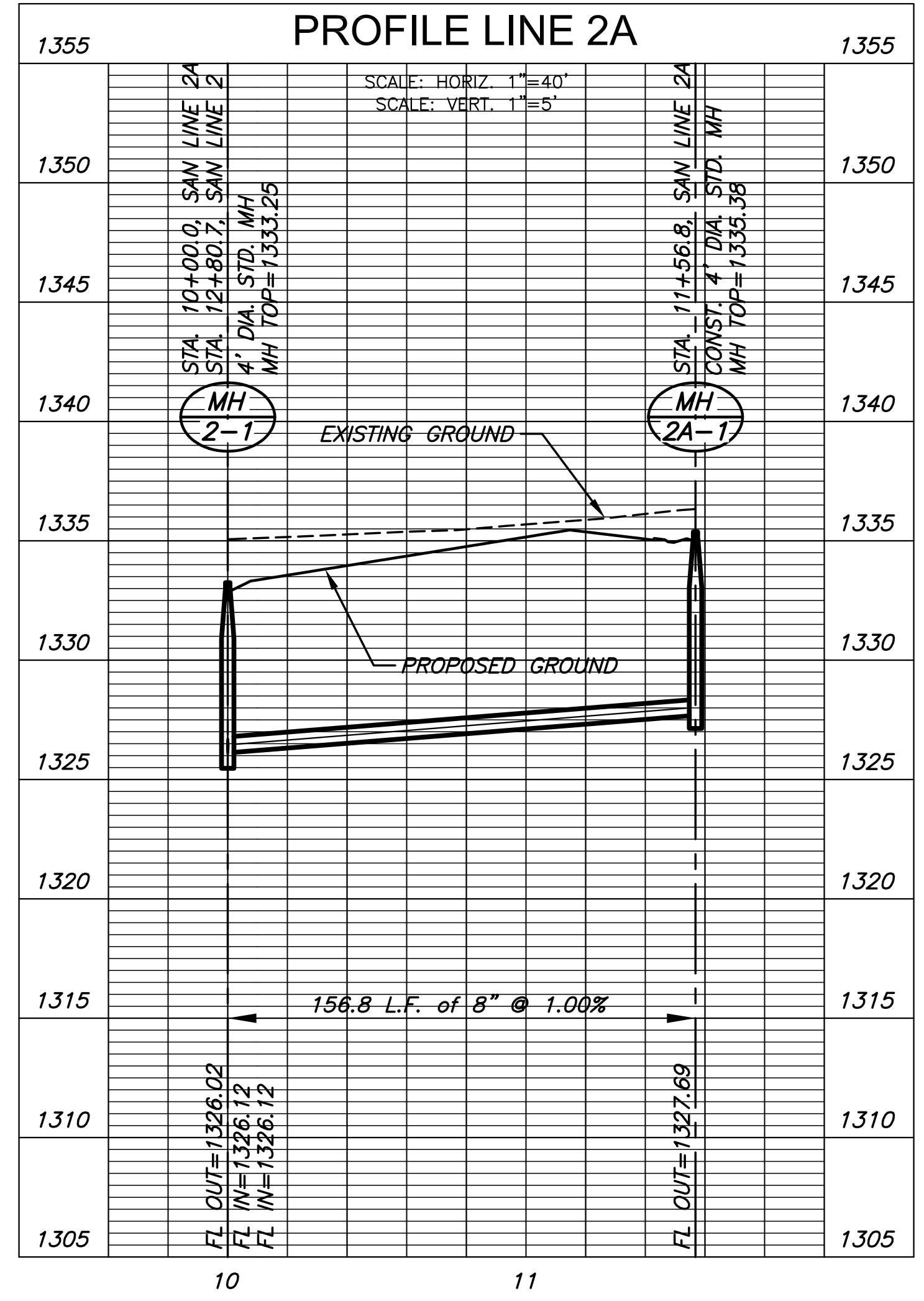


NOTE:
CONTRACTOR TO VERIFY THE DEPTH AND LOCATION OF EXISTING UTILITIES PRIOR TO CONSTRUCTION.

PLAN LINE 2 (CONT.)
PROFILE LINE 2 (CONT.)



PLAN LINE 2A
PROFILE LINE 2A



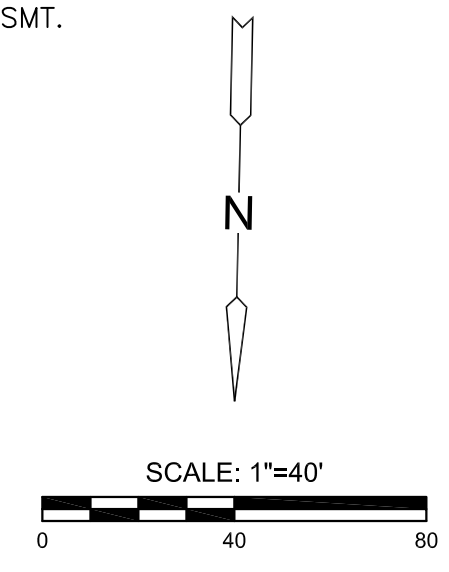
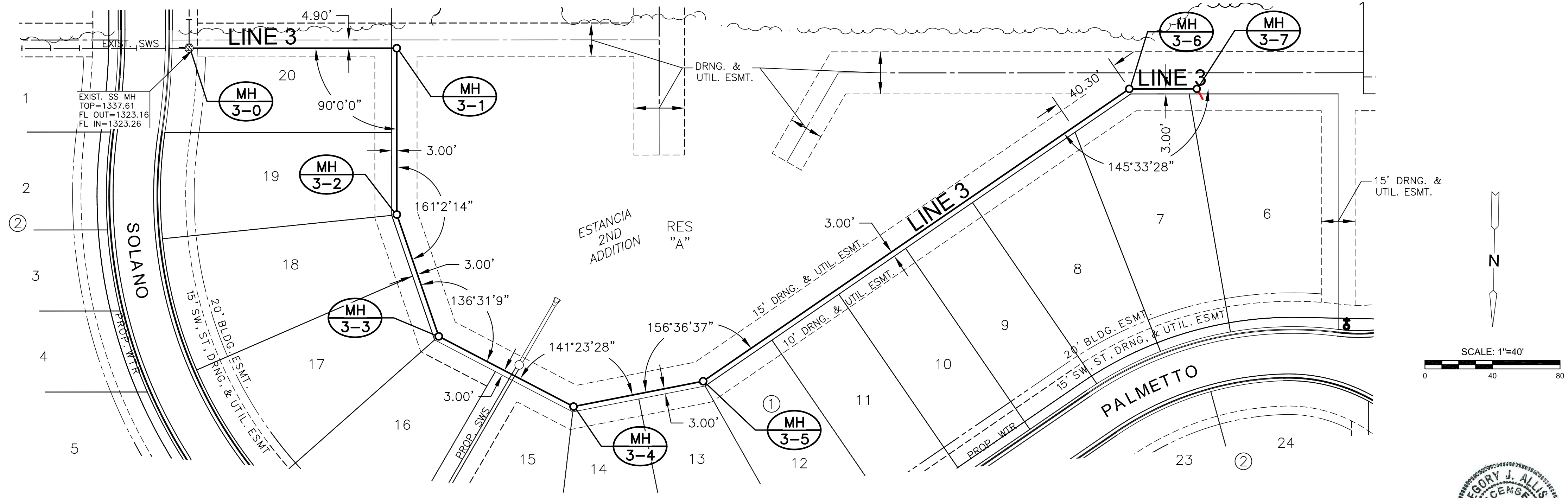
SANITARY SEWER PLANS FOR
ESTANCIA SECOND ADDITION
PHASE 1

©2019 MKEC Engineering All Rights Reserved
These drawings and their contents, including, but not limited to, all concepts, designs, & ideas are the exclusive property of MKEC Engineering (MKEC), and may not be used or reproduced in any way without the express consent of MKEC.

SAN LINE 2 & 2A

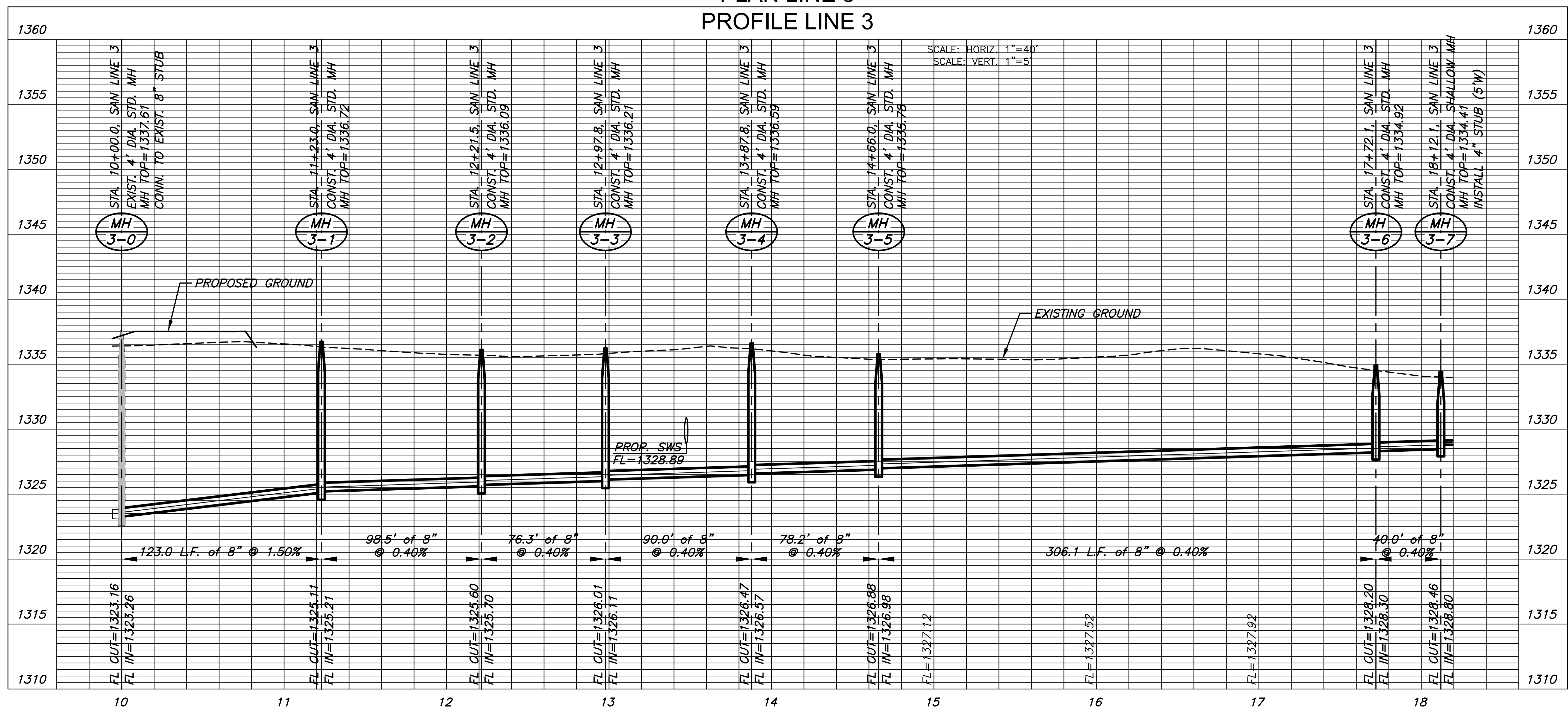
PROJECT NO.	468-2019-014830	
DATE	OCT. 2019	
SCALE	1" = 40'	
DESIGNED	DRAWN	CHECKED
DFL	RWB	DFL

NO.	REVISION	DATE



NOTE:
CONTRACTOR TO VERIFY THE DEPTH AND LOCATION OF EXISTING UTILITIES PRIOR TO CONSTRUCTION.

PLAN LINE 3
PROFILE LINE 3



©2019 MKEC Engineering All Rights Reserved
www.mkec.com
These drawings and their contents, including, but not limited to, all concepts, designs, & lists are the exclusive property of MKEC Engineering (MKEC), and may not be used or reproduced in any way without the express consent of MKEC.

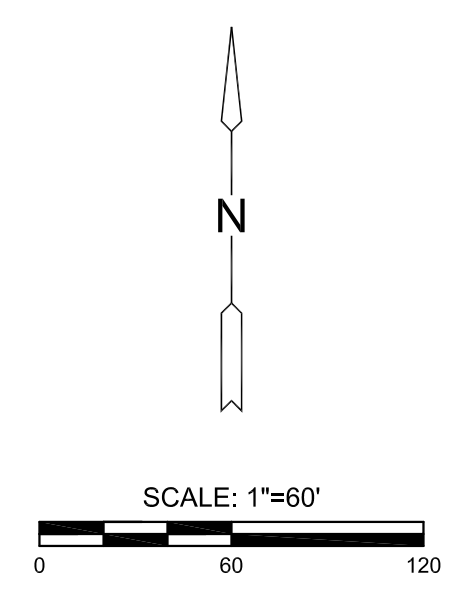
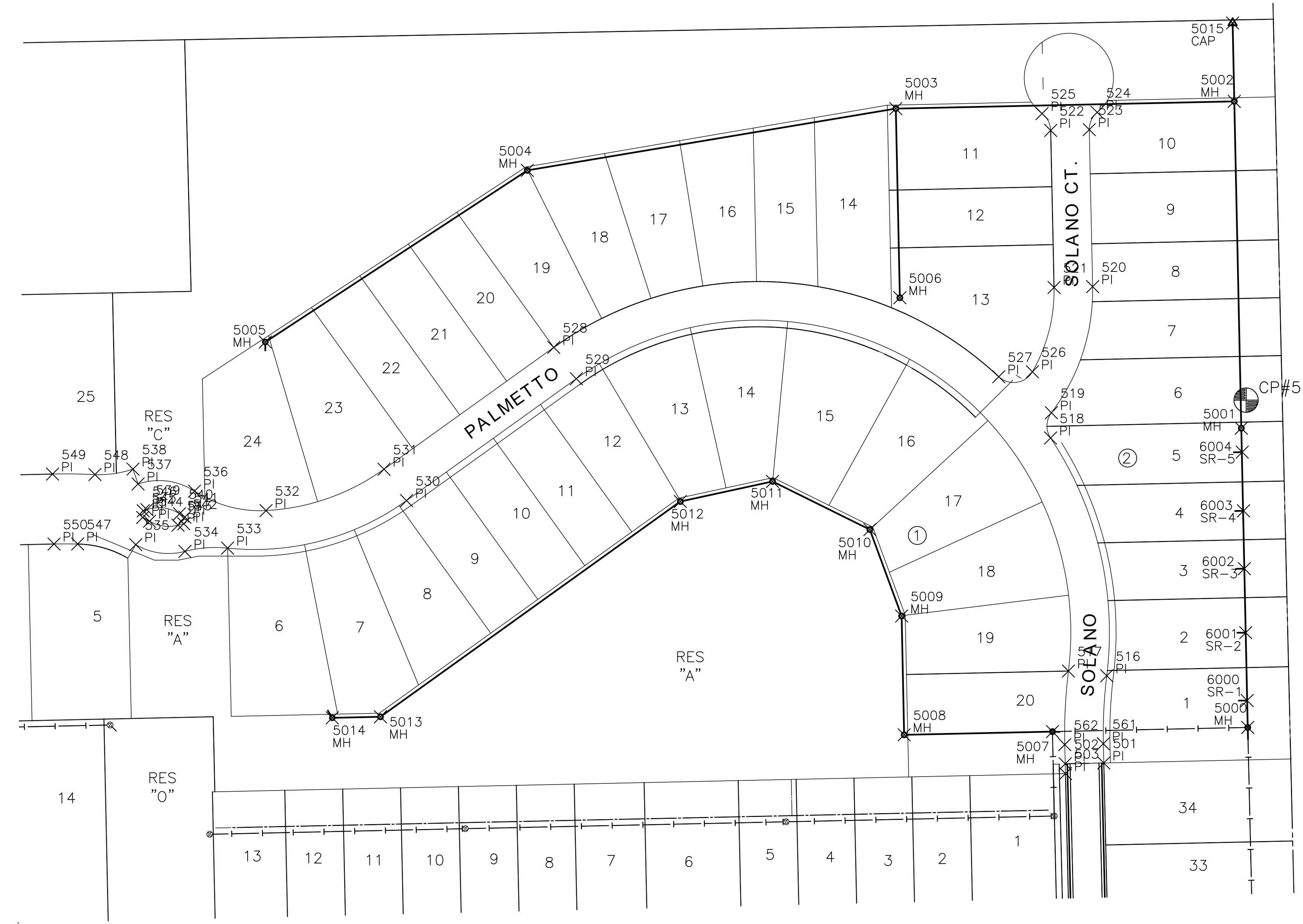
SAN LINE 3

PROJECT NO.	468-2019-014830
DATE	OCT. 2019
SCALE	1" = 40'
DESIGNED	DFL
DRAWN	RWB
CHECKED	DFL

NO.	REVISION	DATE

PLOTTED: Friday, November 01, 2019 @ 02:28PM

J:\PROJECTS\2019\1901010338_ESTANCIA_SECOND_18338_CAD\SHS\05_CIVIL\SANITARY\PHASE 1\18338-05-2901.DWG



CONTROL POINTS

DATUM:
THE HORIZONTAL DATUM IS BASED ON THE KANSAS COORDINATE SYSTEM OF 1983(2011), SOUTH ZONE. COORDINATES SHOWN HAVE BEEN MODIFIED TO THE GROUND USING A COMBINED ADJUSTMENT FACTOR OF 1.0001200144. STATE PLANE COORDINATES CAN BE CALCULATED BY MULTIPLYING THE SHOWN VALUES BY 0.99988.

ALL ELEVATIONS SHOWN ARE BASED ON THE NAVD 88 VERTICAL DATUM.

CP#50 5/8" REBAR WITH MKEC ALUMINUM CAP, 1300 FEET EAST OF RIDGE RD. ON THE SOUTH SIDE OF VILLAGE CIR., 80 FEET WEST OF CONCRETE ENTRANCE DRIVE TO FARM HOUSE. 15 FEET SOUTH OF SIDEWALK
NORTHING = 1711490.124 EASTING = 1624127.580
ELEV. = 1335.95' NAVD 88

CP#51 5/8" REBAR WITH MKEC ALUMINUM CAP AT NORTHEAST PORTION OF SITE. 13 FEET WEST OF WEST EDGE OF TREE ROW AND 285 FEET NORTH OF NORTH EDGE OF TREE ROW, NORTH OF PLATTED LOT 34, BLOCK 1, ESTANCIA ADDITION.
NORTHING = 1711268.791 EASTING = 1625517.702
ELEV. = 1337.04' NAVD 88

BM#52 PLUS CUT/SQUARE CUT AT SOUTHWEST CORNER OF CURB INLET WEST SIDE OF SOLANO ST. 600 FEET NORTH OF 37TH ST. N., 28 FEET NORTH OF NORTH EDGE OF PARKING STALLS.
NORTHING = 1710171.016 EASTING = 1625356.019
ELEV. = 1334.12' NAVD 88

BM#53 PLUS CUT ON CITY OF WICHITA DISC AT TOP OF CURB, WEST SIDE OF ESTANCIA STREET, THREE FEET SOUTH OF CURB INLET, 600 FEET NORTH OF MAIN ENTRANCE AT 37TH ST. N.
NORTHING = 1710142.067 EASTING = 1624443.448
ELEV. 1333.50' NAVD 88

CP#54 5/8" REBAR WITH MKEC ALUMINUM CAP SOUTHWEST OF WEST END OF SECOND CULDESAC NORTH OF MAIN ENTRANCE ON ESTANCIA ST. SOUTHWEST OF SOUTHWEST CORNER LOT 40, BLOCK 3, ESTANCIA ADDITION.
NORTHING = 1710213.104 EASTING = 1623405.099
ELEV. = 1332.49' NAVD 88

CP#55 5/8" REBAR WITH MKEC ALUMINUM CAP AT NORTHWEST SIDE OF LOT 65, BLOCK 3, ESTANCIA ADDITION.
NORTHING = 1710866.554 EASTING = 1623388.67
ELEV. = 1332.71' NAVD 88

CP#56 5/8" REBAR WITH MKEC ALUMINUM CAP, AT NORTHWEST SIDE OF LOT 72, BLOCK 3, ESTANCIA ADDITION, 6 FEET SOUTHEAST OF TOP OF BANK FOR POND.
NORTHING = 1710879.252 EASTING = 1623983.524
ELEV. 1333.39' NAVD 88

BM#57 PKN AND WASHER DRILLED INTO TOP OF CURB AT NORTHWEST CORNER OF 8 CAR PARKING BAY ON EAST SIDE OF CLUB HOUSE WEST SIDE OF SOLANO ST.
NORTHING = 1710607.21 EASTING = 1625354.12
ELEV. 1334.48' NAVD 88

BM#58 PKN AND WASHER DRILLED INTO NORTHEAST CORNER OF CURB INLET, EAST SIDE OF ESTANCIA ST., 70 FEET NORTH OF COLLINA ST.
NORTHING = 1710768.55 EASTING = 1624579.04
ELEV. 1333.63' NAVD 88

NOTE:
ALL CONTROL POINTS SHOWN HAVE ELEVATIONS ESTABLISHED USING STANDARD SURVEYING PROCEDURES AND CAN BE USED AS TEMPORARY BENCHMARKS. WHEN USING A CONTROL POINT AS A TEMPORARY BENCHMARK, IT IS RECOMMENDED THAT CROSS-CHECKS BE MADE TO OTHER CONTROL POINTS OR BENCHMARKS TO CONFIRM ELEVATIONS PRIOR TO USE.

EVERY ATTEMPT HAS BEEN MADE TO INSURE ALL COORDINATE VALUES SHOWN ARE AN ACCURATE AND TRUE REPRESENTATION OF THE CURRENT PLANS. ALL VALUES ARE TO BE CONFIRMED WITH THE FINAL SIGNED PLAN SET BEFORE USE.

ESTANCIA SECOND ADDITION

PHASE 1

SANITARY SEWER PLANS FOR

©2019 MKEC Engineering All Rights Reserved
www.mkec.com
These drawings and their contents, including, but not limited to, all concepts, designs, & ideas are the exclusive property of MKEC Engineering (MKEC), and may not be used or reproduced in any way without the express consent of MKEC.

BUBBLE MAP 1 OF 2

PROJECT NO.	468-2019-014830	
DATE	OCT. 2019	
SCALE	1" = 60'	
DESIGNED	DRAWN	CHECKED
DFL	RWB	DFL
NO.	REVISION	DATE

PLAT POINTS			
Point #	Northing	Easting	Desc.
501	1710968.02	1625399.69	PI
502	1710967.33	1625367.70	PI
503	1710959.24	1625367.89	PI
506	1710995.89	1624174.36	PI
507	1710994.65	1624116.17	PI
508	1710991.78	1623982.55	PI
509	1711420.66	1623973.36	PI
510	1711523.83	1624138.18	PI
511	1711559.69	1624220.29	PI
512	1711351.05	1624225.63	PI
516	1711040.29	1625402.13	PI
517	1711044.23	1625370.38	PI
518	1711237.44	1625355.55	PI
519	1711258.36	1625356.24	PI
520	1711362.88	1625390.44	PI
521	1711362.19	1625358.44	PI

PLAT POINTS			
Point #	Northing	Easting	Desc.
522	1711492.35	1625355.65	PI
523	1711493.03	1625387.65	PI
524	1711507.33	1625394.21	PI
525	1711506.34	1625348.48	PI
526	1711292.32	1625340.52	PI
527	1711288.20	1625312.61	PI
528	1711312.53	1624943.66	PI
529	1711286.54	1624962.32	PI
530	1711185.52	1624821.59	PI
531	1711211.52	1624802.93	PI
532	1711177.24	1624705.11	PI
533	1711146.16	1624673.26	PI
534	1711143.42	1624637.88	PI
535	1711149.00	1624597.11	PI
536	1711193.38	1624645.81	PI
537	1711199.33	1624599.03	PI

PLAT POINTS			
Point #	Northing	Easting	Desc.
538	1711211.63	1624594.82	PI
539	1711178.04	1624606.32	PI
540	1711174.60	1624633.43	PI
541	1711171.83	1624637.82	PI
542	1711166.33	1624636.92	PI
543	1711165.17	1624632.13	PI
544	1711168.41	1624608.50	PI
545	1711171.53	1624602.84	PI
546	1711177.06	1624603.32	PI
547	1711149.55	1624548.96	PI
548	1711207.11	1624563.27	PI
549	1711207.52	1624528.11	PI
550	1711149.54	1624529.36	PI
551	1711143.50	1624247.76	PI
552	1711201.49	1624246.52	PI
553	1711182.10	1624178.64	PI

PLAT POINTS			
Point #	Northing	Easting	Desc.
554	1711217.82	1624170.75	PI
555	1711217.13	1624138.76	PI
556	1711319.32	1624136.57	PI
557	1711320.01	1624168.56	PI
558	1711162.24	1624152.66	PI
559	1711049.75	1624111.08	PI
560	1711055.08	1624168.84	PI
561	1710983.98	1625399.32	PI
562	1710983.23	1625367.33	PI
630	1710999.98	1624173.92	PI



SANITARY POINTS			
Point #	Northing	Easting	Desc.
5000	1710997.49	1625519.03	MH
5001	1711245.52	1625513.69	MH
5002	1711516.45	1625507.88	MH
5003	1711510.45	1625227.24	MH
5004	1711459.25	1624921.76	MH
5005	1711316.97	1624704.51	MH
5006	1711353.67	1625230.60	MH
5007	1710994.02	1625357.12	MH
5008	1710991.38	1625234.17	MH
5009	1711089.86	1625232.06	MH
5010	1711161.48	1625205.72	MH
5011	1711201.40	1625125.05	MH
5012	1711184.77	1625048.63	MH
5013	1711006.30	1624799.99	MH
5014	1711005.44	1624760.01	MH
5015	1711581.43	1625506.49	CAP

SANITARY RISER POINTS			
Point #	Northing	Easting	Desc.
6000	1711019.81	1625518.55	SR-1
6001	1711076.06	1625517.34	SR-2
6002	1711129.09	1625516.21	SR-3
6003	1711177.05	1625515.52	SR-4
6004	1711225.71	1625514.47	SR-5



SANITARY SEWER PLANS FOR
ESTANCIA SECOND ADDITION
 PHASE 1

©2019
 MKEC Engineering
 All Rights Reserved
 www.mkec.com
 These drawings and their contents, including, but not limited to, all concepts, designs, & ideas are the exclusive property of MKEC Engineering (MKEC), and may not be used or reproduced in any way without the express consent of MKEC.

BUBBLE MAP
 2 OF 2

PROJECT NO.	468-2019-014830	
DATE	OCT. 2019	
SCALE	N/A	
DESIGNED	DRAWN	CHECKED
RWB	RWB	DFL

NO.	REVISION	DATE

SHEET NO.

EVERY ATTEMPT HAS BEEN MADE TO INSURE ALL COORDINATE VALUES SHOWN ARE AN ACCURATE AND TRUE REPRESENTATION OF THE CURRENT PLANS. ALL VALUES ARE TO BE CONFIRMED WITH THE FINAL SIGNED PLAN SET BEFORE USE.