

Sanitary Sewer Riser Location Table

Project Name: Chalet Ridge

Project Location: N of Pawnee on Webb

Project No.: 468-2019-025028

OCA No.: 744520

Contractor: Mies

Inspector: Roger Skilling

Riser No.	Line No.	Station	Distance from	Distance from	
			Main to Riser (Lt./Rt.)	Upstream MH	Downstream MH
1	1	4+63	5' left	128'	112'
2	1	5+15	5' left	76'	164'
3	1	5+67	5' left	24'	216'
4	1	6+01	5' left	350'	10'
5	1	6+04	5' left	347'	13'
6	1	6+81	5' left	270'	90'
7	1	6+84	5' left	267'	93'
8	1	7+41	5' left	210'	150'
9	1	7+44	5' left	207'	153'
10	1	8+01	5' left	150'	210'
11	1	8+04	5' left	147'	213'
12	1	8+61	5' left	90'	270'
13	1	8+64	5' left	87'	273'
14	1	9+18	5' left	33'	327'
15	1	9+21	5' left	30'	330'
16	1	11+52	5' left	139'	201'
17	1	11+55	5' left	136'	204'
18	1	12+12	5' left	79'	261'
19	1	12+15	5' left	76'	264'
20	1	12+72	5' left	19'	321'
21	1	12+75	5' left	16'	324'
22	2	0+82	9.5 left	144'	53'
23	2	3+82	15' Right	139'	157'
24	2	3+85	15' Right	136'	160'
25	2	4+39	15' Right	82'	214'
26	2	4+42	15' Right	79'	217'
28	2	5+02	15' Right	19'	277'
29	2	5+59	15' Right	302'	38'
30	2	5+62	15' Right	299'	41'
31	2	6+13	5' left	248'	92'

SANITARY SEWER EXTENSION

to serve

Chalet Ridge Addition CITY OF WICHITA, KANSAS

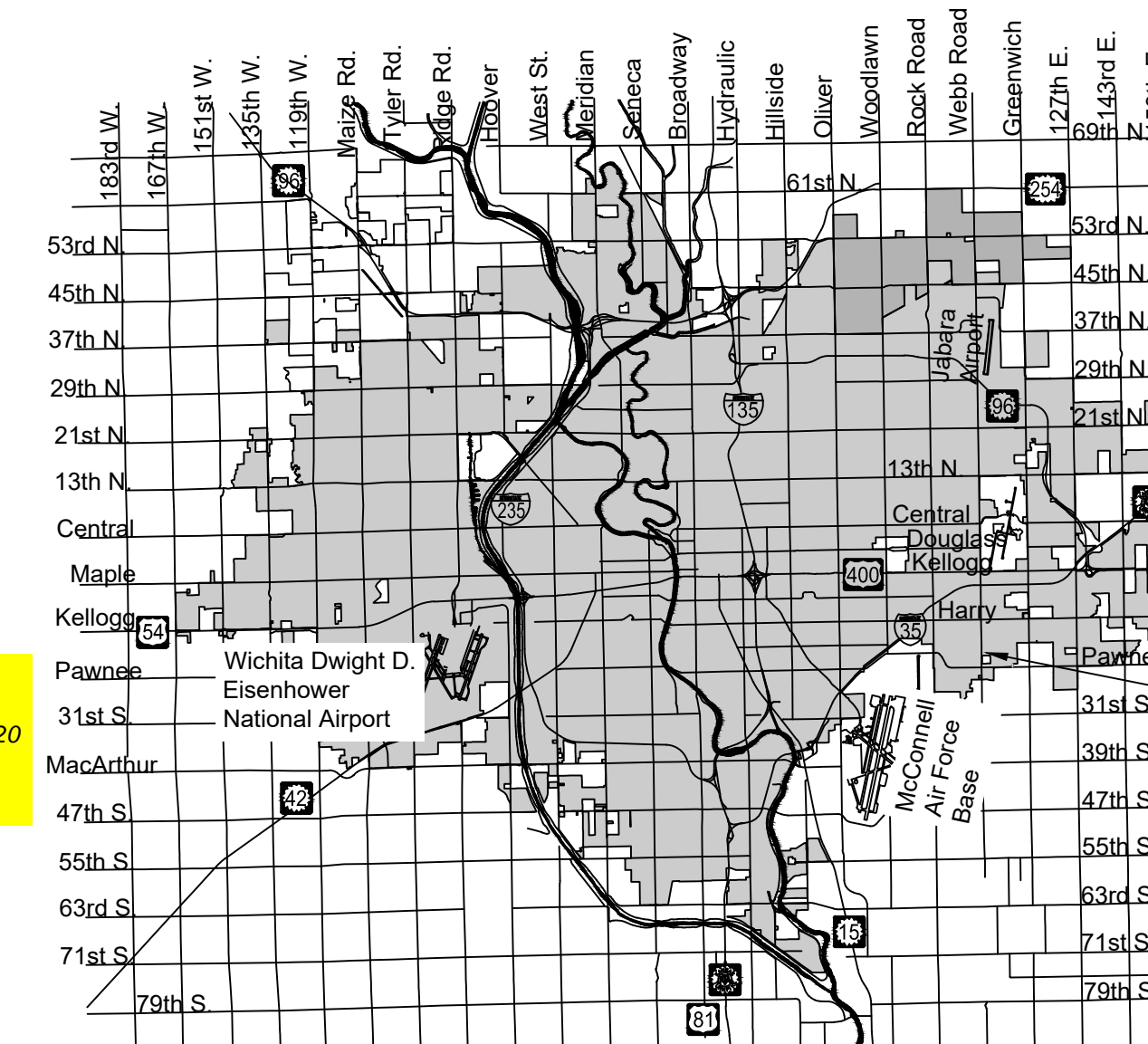
Gary Janzen, P.E. City Engineer

Project Number 468-2019-025028

O.C.A. NO. **744520**

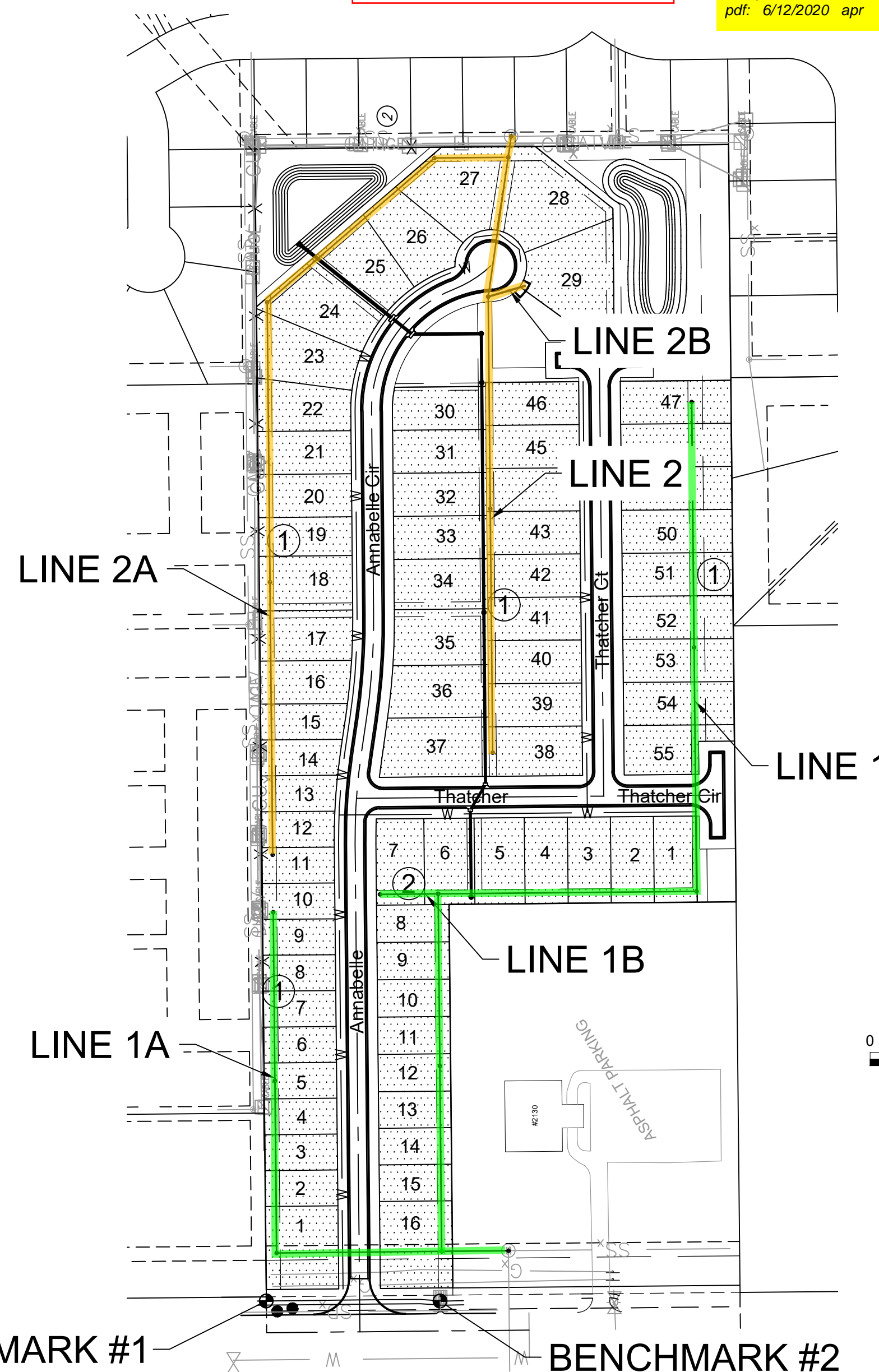
Contractor: Mies Construction
Forman: Mike Gilmore
Inspector: Eddie Flores/ Roger Skilling
Engineer: Kevin Yale

As-built
Risers
Release Date (for connection purposes only): 6/10/2020
Completion Date: 7/15/2020
pdf: 6/12/2020 apr



Vicinity Map

Sheet Index	
Sheet	Title
1	TITLESHEET
2	SANITARY SEWER 1
3	SANITARY SEWER 1
4	SANITARY SEWER 1A & 1B
5	SANITARY SEWER 2
6	SANITARY SEWER 2A
7	SANITARY SEWER 2A & 2B
8	PRECAST MANHOLE DETAILS
9	MANHOLE FRAME & COVER DETAILS
10	VERTICAL RISER DETAILS
11	CLEANOUT RISER DETAILS
12	COORDINATE MAP
13	POINT TABLES
14	EROSION CONTROL PLAN
15	BACK OF CURB, CURB INLET & CONSTRUCTION ENTRANCE DETAILS
16	SILT FENCE DETAILS
17	STRAW BALE DETAILS
18	STREET IMPROVEMENT PROJECTS
19	SUBDIVISION DEVELOPMENT PROCESS
20	FINAL PLAT



BENCHMARK #1

BENCHMARK #2

IMPROVEMENT DISTRICT

GENERAL NOTES:

- The Contractor shall comply with all applicable safety regulations. All construction shall be completed following current City Standard Specifications and Special Provisions.
- Contractor will be required to provide notice to utility companies a minimum of seventy-two (72) hours prior to any excavation, as follows:

Kansas One-Call 687-2470

The Contractor must notify the following in case of an emergency:

AT&T 1-800-246-8464
City of Wichita Water & Sewer Dept. 1-316-219-8921
City of Wichita Stormwater 1-316-268-4090
City of Wichita Traffic 1-316-268-4034
Cox Communications 1-888-249-3530
Evergny 1-800-544-4857
Kansas Gas Service 1-888-482-4950
Southern Star Central Gas 1-800-324-9696
- Utility service lines, poles, etc. are to be adjusted as necessary by others prior to construction unless the plans specifically call for their adjustment by the Contractor or unless the plans specifically identify a utility to be adjusted by its owner during construction. Existing utilities and their location, as shown on the plans, represent the best information obtainable for design. The Contractor will be required to work around existing utilities within the right-of-way which do not conflict with proposed construction.
- Rubble from the removal of miscellaneous structures and excess excavation which is to be wasted shall be disposed of on sites to be provided by the Contractor. These sites shall be approved by the Engineer as to suitability, appearance and site location. Locations, in the opinion of the Engineer, that will leave an unsightly appearance will not be approved. All disposal sites must be approved by the Kansas Department of Health and Environment. Material either stockpiled or disposed of in a flood plain will require a Kansas State Board of Agriculture permit. Any material dumped in waters of the United States or wetlands is subject to U.S. Corps. of Engineers permitting regulations. Any material buried or stockpiled beyond approved construction limits will require additional archaeological investigations unless buried in a previously approved borrow location.
- Trees and shrubs in public right-of-way which are in direct conflict with proposed new construction shall be removed by the Contractor with the Engineer's approval. Trees and shrubs which are not in direct conflict with proposed new construction shall be saved and protected from damage.
- The Contractor shall give all property owners and/or tenants of developed property abutting the construction of this project a minimum of ten (10) days notice prior to start of construction.
- The Contractor shall be responsible for preserving property irons. The Contractor will be required to re-establish any property irons which are damaged or destroyed by his construction operations. Such irons shall be re-established by a licensed land surveyor in accordance with state laws.
- If traffic will be impacted by construction, a traffic control plan must be submitted and approved by the City Traffic Engineer, at traffic@wichita.gov before construction can begin. The Contractor shall be responsible for all traffic control measures to facilitate construction. All construction zone markings and signage shall conform to the latest version of the Manual on Uniform Traffic Control Devices (MUTCD) as published by the US Dept. of Transportation, Federal Highway Administration. All costs associated with construction markings and signage shall be the Contractors responsibly.
- All elevations shown are NAVD 88.
- All areas disturbed during construction that will not be under proposed pavement shall be restored to match existing conditions.
- The Contractor shall protect from damage and support existing utilities through constructions as approved by the utility owner and the Engineer at the contractors expense.

- Contractor shall limit the extent of trench openings overnight and weekends to less than 50 feet.
- All stubs and plugged pipes shall be located with green plastic tape in the same manner as risers.
- Connecting to Existing Manholes:

Prior to laying sewer lines using existing stubs in existing manholes, the Contractor shall expose and verify the elevation, grade and alignment of existing stubs and notify the Engineer of any deviation from the plans. Where connection to an existing manhole that does not have an existing stub or the stub is unusable due to elevation grade or alignment, the Contractor shall bore cut into existing manhole wall to make connection using approved water stop gasket, and reshape the existing manhole invert to provide smooth flow. The cost to connecting to existing manholes is incidental to the project.
- Contractor shall provide positive drainage away from all manhole covers.
- The Contractor shall prevent any construction debris from entering the existing sanitary sewer during construction.
- The Contractor shall be responsible for maintaining continuous flow of sewage through construction. Contractors proposed method for maintaining sewage flow shall be submitted and approved by the Sewer Maintenance Division (316-268-4073) prior to starting and by-passing of sewage flows.
- Any over excavation from manhole and/or pipe removal shall be backfilled and compacted in accordance with the Standard Specifications.
- No shrink or swell factors have been applied to the earthwork quantities shown on this project. All earthwork quantities are based on raw surface volume comparisons.
- Excess dirt generated from installation of underground utilities is to remain on site and be stockpiled on Res. 'B'.

Benchmarks

BENCHMARK #1:
CHISELED SQUARE ON THE TOP OF SIDEWALK, 44 FEET EAST OF THE CENTERLINE OF WEBB RD AND 1,986 FEET NORTH OF THE CENTERLINE OF PAWNEE.
ELEVATION = 1377.19 (NAVD88, G12B)

BENCHMARK #2:
CHISELED SQUARE ON THE TOP OF SIDEWALK, 42 FEET EAST OF THE CENTERLINE OF WEBB RD AND 1,744 FEET NORTH OF THE CENTERLINE OF PAWNEE.
ELEVATION = 1377.96 (NAVD88, G12B)

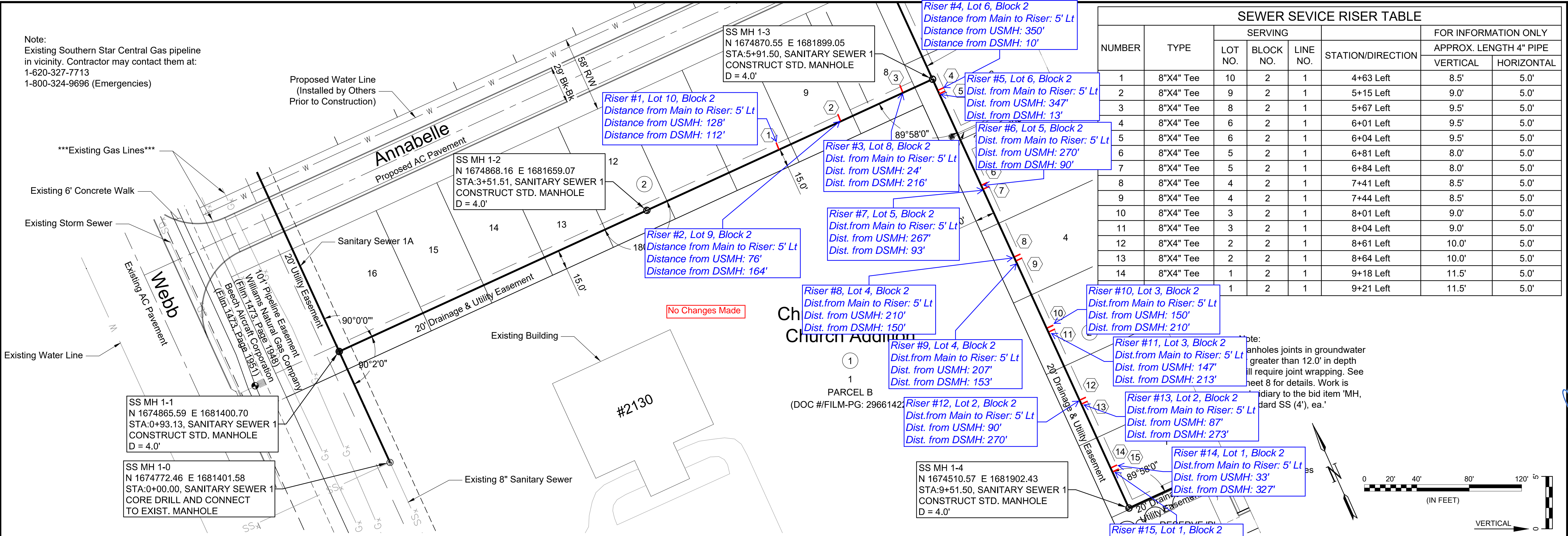
January 2020

PLANS PREPARED BY



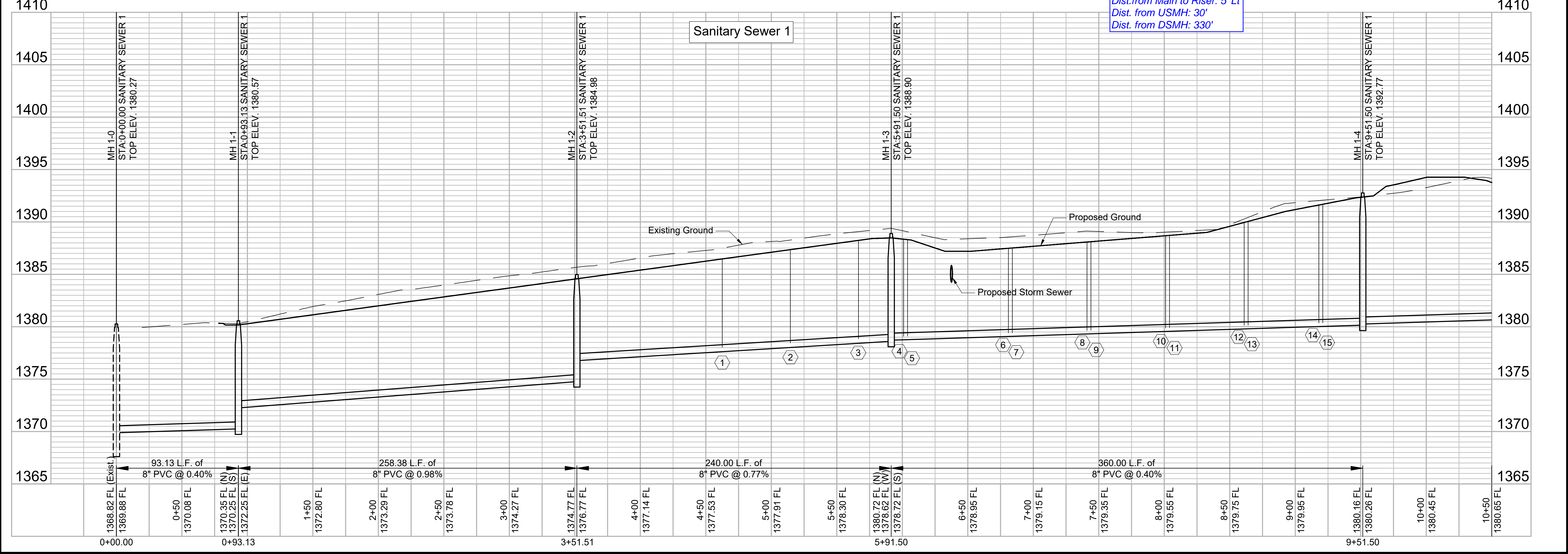
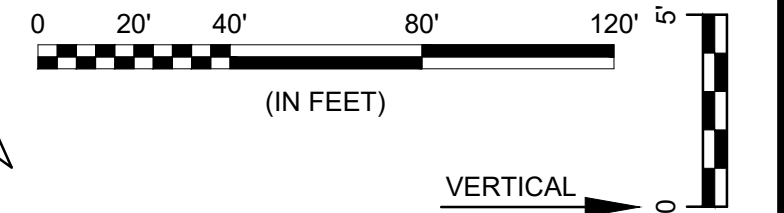
GARVER
8535 E. 21st Street N.
Suite 130
Wichita, KS 67206
(316) 264-8008
www.GarverUSA.com
Project No. 19T41021

Note:
Existing Southern Star Central Gas pipeline
in vicinity. Contractor may contact them at:
1-620-327-7713
1-800-324-9696 (Emergencies)



SEWER SEVICE RISER TABLE								
NUMBER	TYPE	SERVING			STATION/DIRECTION	FOR INFORMATION ONLY		
		LOT NO.	BLOCK NO.	LINE NO.		APPROX. LENGTH 4" PIPE		
					VERTICAL	HORIZONTAL		
1	8"X4" Tee	10	2	1	4+63 Left	8.5'	5.0'	
2	8"X4" Tee	9	2	1	5+15 Left	9.0'	5.0'	
3	8"X4" Tee	8	2	1	5+67 Left	9.5'	5.0'	
4	8"X4" Tee	6	2	1	6+01 Left	9.5'	5.0'	
5	8"X4" Tee	6	2	1	6+04 Left	9.5'	5.0'	
6	8"X4" Tee	5	2	1	6+81 Left	8.0'	5.0'	
7	8"X4" Tee	5	2	1	6+84 Left	8.0'	5.0'	
8	8"X4" Tee	4	2	1	7+41 Left	8.5'	5.0'	
9	8"X4" Tee	4	2	1	7+44 Left	8.5'	5.0'	
10	8"X4" Tee	3	2	1	8+01 Left	9.0'	5.0'	
11	8"X4" Tee	3	2	1	8+04 Left	9.0'	5.0'	
12	8"X4" Tee	2	2	1	8+61 Left	10.0'	5.0'	
13	8"X4" Tee	2	2	1	8+64 Left	10.0'	5.0'	
14	8"X4" Tee	1	2	1	9+18 Left	11.5'	5.0'	
		1	2	1	9+21 Left	11.5'	5.0'	

Note:
manholes joints in groundwater
greater than 12.0' in depth
will require joint wrapping. See
sheet 8 for details. Work is
secondary to the bid item 'MH,
Standard SS (4)', ea.'



File: L:\2019\19T41021 - VCRC Improvements\Drawings\C3D\SANITARY SEWERS\SANITARY SEWER 1.dwg Last Save: 1/15/2020 11:06 AM Last saved by: CDJurey
 Last plotted by: Jurey, Caleb D. Plot Style: --- Plot Scale: 1:2,565 Plot Date: 1/15/2020 11:09 AM Plotter used: None

© 2020 GARVER, LLC
THIS DOCUMENT, ALONG WITH THE
IDEAS AND DESIGNS CONVEYED
HEREIN, SHALL BE CONSIDERED
INSTRUMENTS OF PROFESSIONAL
SERVICE AND ARE PROPERTY OF
GARVER, LLC. ANY USE,
REPRODUCTION, OR DISTRIBUTION
OF THIS DOCUMENT, ALONG WITH
THE IDEAS AND DESIGN CONTAINED
HEREIN, IS PROHIBITED UNLESS
AUTHORIZED IN WRITING BY
GARVER, LLC OR EXPLICITLY
ALLOWED IN THE GOVERNING
PROFESSIONAL SERVICES
AGREEMENT FOR THIS WORK.

BY		DESCRIPTION		DATE		REV.	

CITY OF WICHITA
WICHITA, KANSAS

CHALET RIDGE ADDITION
SANITARY SEWER

SANITARY SEWER 1

JOB NO.: 19T41021
DATE: JAN 2020
DESIGNED BY: CMB
DRAWN BY: CDJ

BAR IS ONE INCH ON ORIGINAL DRAWING
IF NOT ONE INCH ON THIS SHEET,
ADJUST SCALES ACCORDINGLY.

DRAWING NUMBER

SHEET NUMBER **2** OF **20**



© 2020 GARVER, LLC
 THIS DOCUMENT, ALONG WITH THE IDEAS AND DESIGNS CONVEYED HEREIN, SHALL BE CONSIDERED INSTRUMENTS OF PROFESSIONAL SERVICE AND ARE PROPERTY OF GARVER, LLC. ANY USE, REPRODUCTION, OR DISTRIBUTION OF THIS DOCUMENT, ALONG WITH THE IDEAS AND DESIGN CONTAINED HEREIN, IS PROHIBITED UNLESS AUTHORIZED IN WRITING BY GARVER, LLC OR EXPLICITLY ALLOWED IN THE GOVERNING PROFESSIONAL SERVICES AGREEMENT FOR THIS WORK.



REV.	DATE	DESCRIPTION

CITY OF WICHITA
 WICHITA, KANSAS
 CHALET RIDGE ADDITION
 WICHITA, KANSAS
 SANITARY SEWER

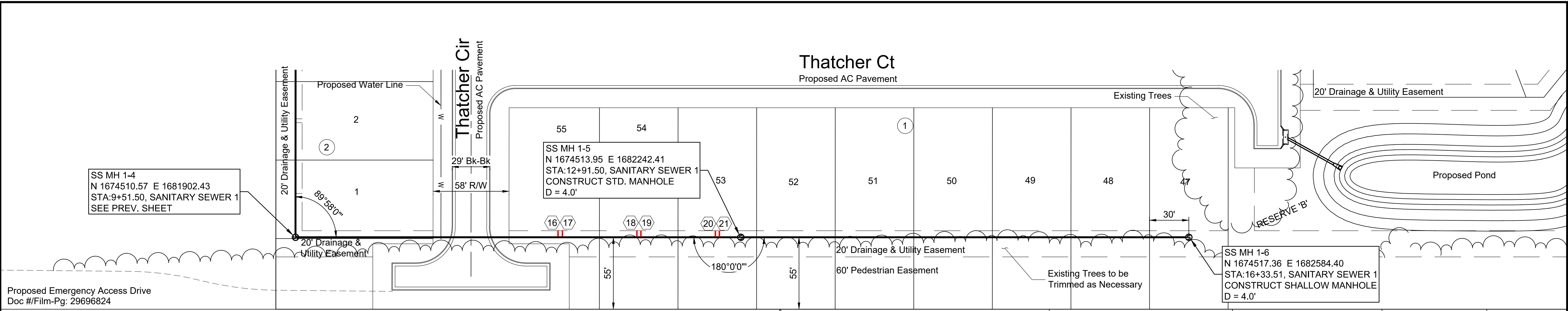
SANITARY SEWER 1

JOB NO.: 19T41021
 DATE: JAN 2020
 DESIGNED BY: CMB
 DRAWN BY: CDJ

BAR IS ONE INCH ON ORIGINAL DRAWING
 IF NOT ONE INCH ON THIS SHEET, ADJUST SCALES ACCORDINGLY.

DRAWING NUMBER

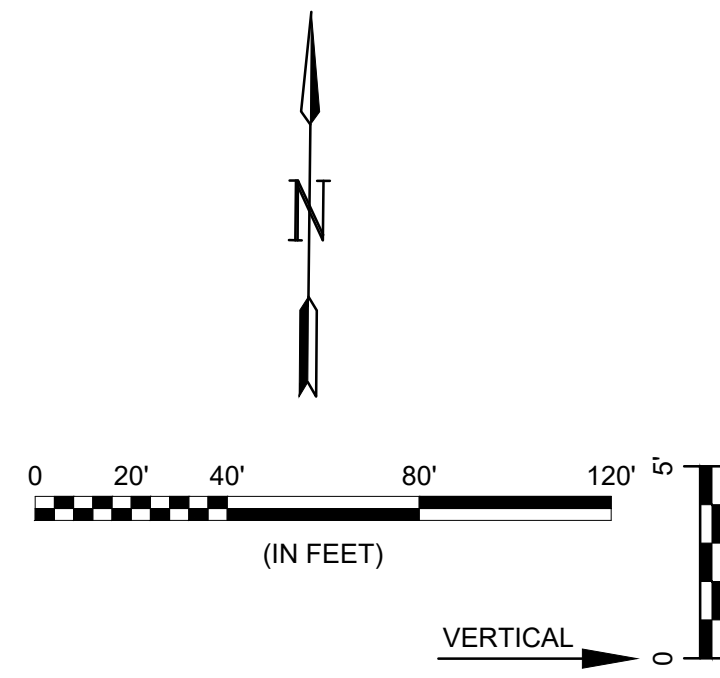
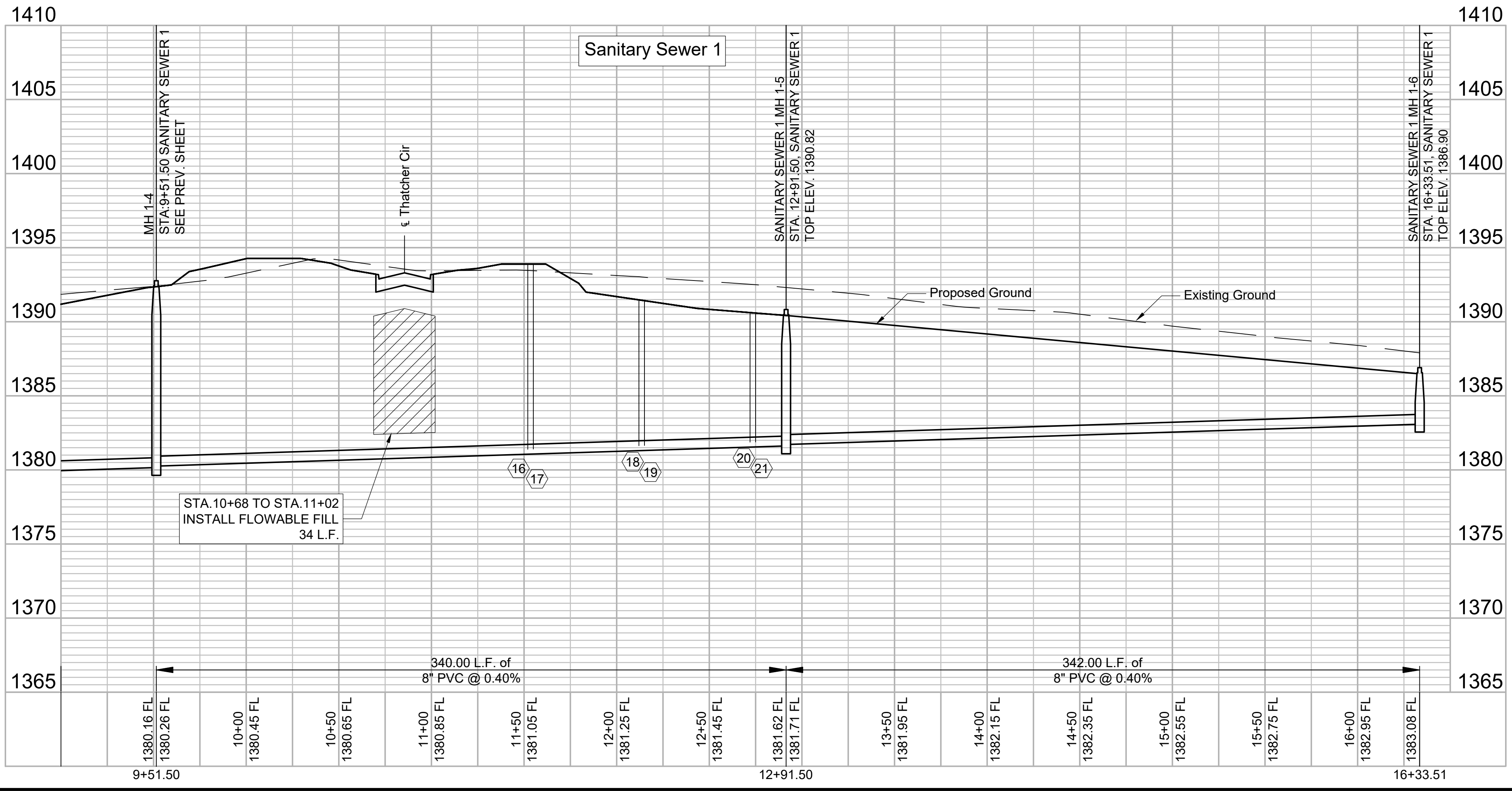
SHEET NUMBER **3** OF **20**



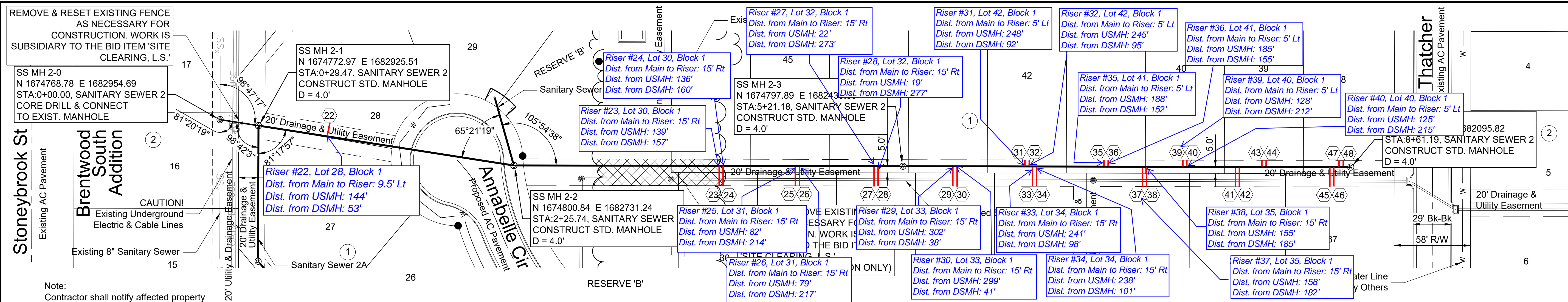
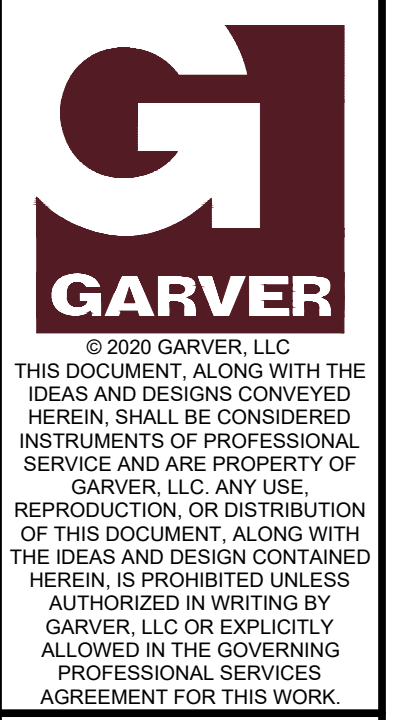
Proposed Emergency Access Drive
 Doc #/Film-Pg: 29696824

NUMBER	TYPE	SERVING			STATION/DIRECTION	FOR INFORMATION ONLY		Distance from Main to Manhole (Lt./Rt.)	Distance from	
		LOT NO.	BLOCK NO.	LINE NO.		APPROX. LENGTH 4" PIPE			Upstream MH	Upstream MH
						VERTICAL	HORIZONTAL			
16	8"X4" Tee	55	1	1	11+52 Left	12.5'	5.0'	5' Lt.	139'	201'
17	8"X4" Tee	55	1	1	11+55 Left	12.5'	5.0'	5' Lt.	136'	204'
18	8"X4" Tee	54	1	1	12+12 Left	10.0'	5.0'	5' Lt.	79'	261'
19	8"X4" Tee	54	1	1	12+15 Left	10.0'	5.0'	5' Lt.	76'	264'
20	8"X4" Tee	53	1	1	12+72 Left	9.0'	5.0'	5' Lt.	19'	321'
21	8"X4" Tee	53	1	1	12+75 Left	9.0'	5.0'	5' Lt.	16'	324'

No Changes Made



File: L:\2019\19T41021 - VCRC Improvements\Drawings\C3D\SANITARY SEWERS\SANITARY SEWER 1 (1).dwg Last Save: 1/15/2020 11:26 AM Last saved by: CDJurey
 Last plotted by: Jurey, Caleb D. Plot Style: --- Plot Scale: 1:2.565 Plot Date: 1/15/2020 11:26 AM Plotter used: None



Note:
Contractor shall notify affected property owner(s) of any construction activity occurring on their property/properties.

SEWER SEVICE RISER TABLE

NUMBER	TYPE	SERVING			STATION/DIRECTION	FOR INFORMATION ONLY	
		LOT NO.	BLOCK NO.	LINE NO.		APPROX. LENGTH 4" PIPE	VERTICAL
22	8"X4" Tee	28	1	2	0+82 Left	11.0'	9.5'
23	8"X4" Tee	30	1	2	3+82 Right	7.0'	15.0'
24	8"X4" Tee	30	1	2	3+85 Right	7.0'	15.0'
25	8"X4" Tee	31	1	2	4+39 Right	7.5'	15.0'
26	8"X4" Tee	31	1	2	4+42 Right	7.5'	15.0'
27	8"X4" Tee	32	1	2	4+99 Right	7.5'	15.0'
28	8"X4" Tee	32	1	2	5+02 Right	7.5'	15.0'
29	8"X4" Tee	33	1	2	5+59 Right	8.0'	15.0'
30	8"X4" Tee	33	1	2	5+62 Right	8.0'	15.0'

SEWER SEVICE RISER TABLE

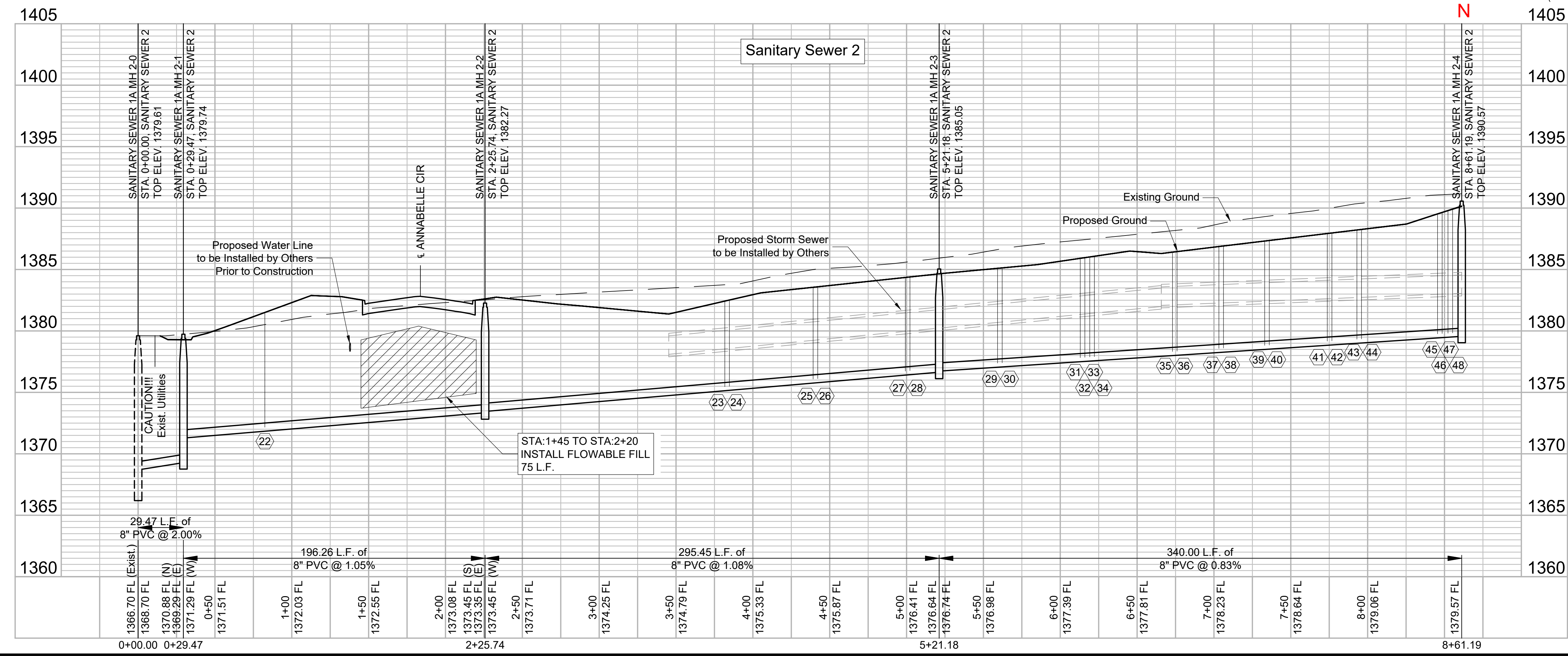
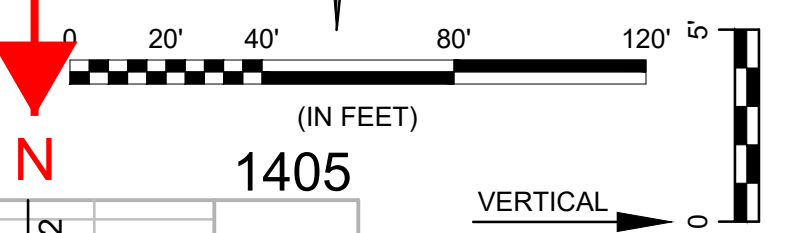
NUMBER	TYPE	SERVING			STATION/DIRECTION	FOR INFORMATION ONLY	
		LOT NO.	BLOCK NO.	LINE NO.		APPROX. LENGTH 4" PIPE	VERTICAL
31	8"X4" Tee	42	1	2	6+13 Left	8.0'	5.0'
32	8"X4" Tee	42	1	2	6+16 Left	8.0'	5.0'
33	8"X4" Tee	34	1	2	6+19 Right	8.0'	15.0'
34	8"X4" Tee	34	1	2	6+22 Right	8.0'	15.0'
35	8"X4" Tee	41	1	2	6+73 Left	8.0'	5.0'
36	8"X4" Tee	41	1	2	6+76 Left	8.0'	5.0'
37	8"X4" Tee	35	1	2	7+03 Right	8.5'	15.0'
38	8"X4" Tee	35	1	2	7+06 Right	8.5'	15.0'
39	8"X4" Tee	40	1	2	7+33 Left	8.5'	5.0'
40	8"X4" Tee	40	1	2	7+36 Left	8.5'	5.0'

SEWER SEVICE RISER TABLE

NUMBER	TYPE	SERVING			STATION/DIRECTION	FOR INFORMATION ONLY		Distance from Main to Manhole (Lt./Rt.)	Distance from Upstream MH	Distance from Upstream MH
		LOT NO.	BLOCK NO.	LINE NO.		APPROX. LENGTH 4" PIPE	VERTICAL			
41	8"X4" Tee	36	1	2	7+74 Right	10.0'	15.0'	15' Rt.	87'	253'
42	8"X4" Tee	36	1	2	7+77 Right	10.0'	15.0'	15' Rt.	84'	256'
43	8"X4" Tee	39	1	2	7+93 Left	9.0'	5.0'	5' Lt.	68'	272'
44	8"X4" Tee	39	1	2	7+96 Left	9.0'	5.0'	5' Lt.	65'	275'
45	8"X4" Tee	37	1	2	8+45 Right	10.0'	15.0'	15' Rt.	16'	324'
46	8"X4" Tee	37	1	2	8+48 Right	10.0'	15.0'	15' Rt.	13'	327'
47	8"X4" Tee	38	1	2	8+53 Left	10.0'	5.0'	5' Lt.	8'	332'
48	8"X4" Tee	38	1	2	8+56 Left	10.0'	5.0'	5' Lt.	5'	335'

Distance from Main to Manhole (Lt./Rt.)	Distance from Upstream MH	Distance from Upstream MH
15' Rt.	84'	256'
5' Lt.	68'	272'
5' Lt.	65'	275'
15' Rt.	16'	324'
15' Rt.	13'	327'
5' Lt.	8'	332'
5' Lt.	5'	335'

No Changes Made



File: L:\2019\19T41021 - YCRC Improvements\Drawings\C3D\SANITARY SEWERS\SANITARY SEWER 2.dwg Last Save: 1/15/2020 10:46 AM Last saved by: CDJurey
 Last plotted by: Jurey, Caleb D. Plot Date: 1/15/2020 10:46 AM Plotter used: None

REV.	DATE	DESCRIPTION

CITY OF WICHITA
WICHITA, KANSAS

CHALET RIDGE ADDITION
SANITARY SEWER

SANITARY SEWER 2

JOB NO.: 19T41021
DATE: JAN 2020
DESIGNED BY: CMB
DRAWN BY: CDJ

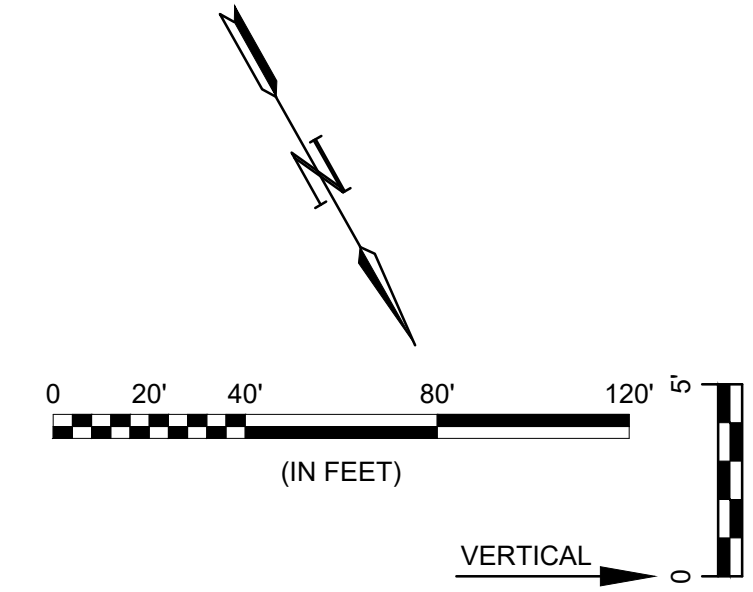
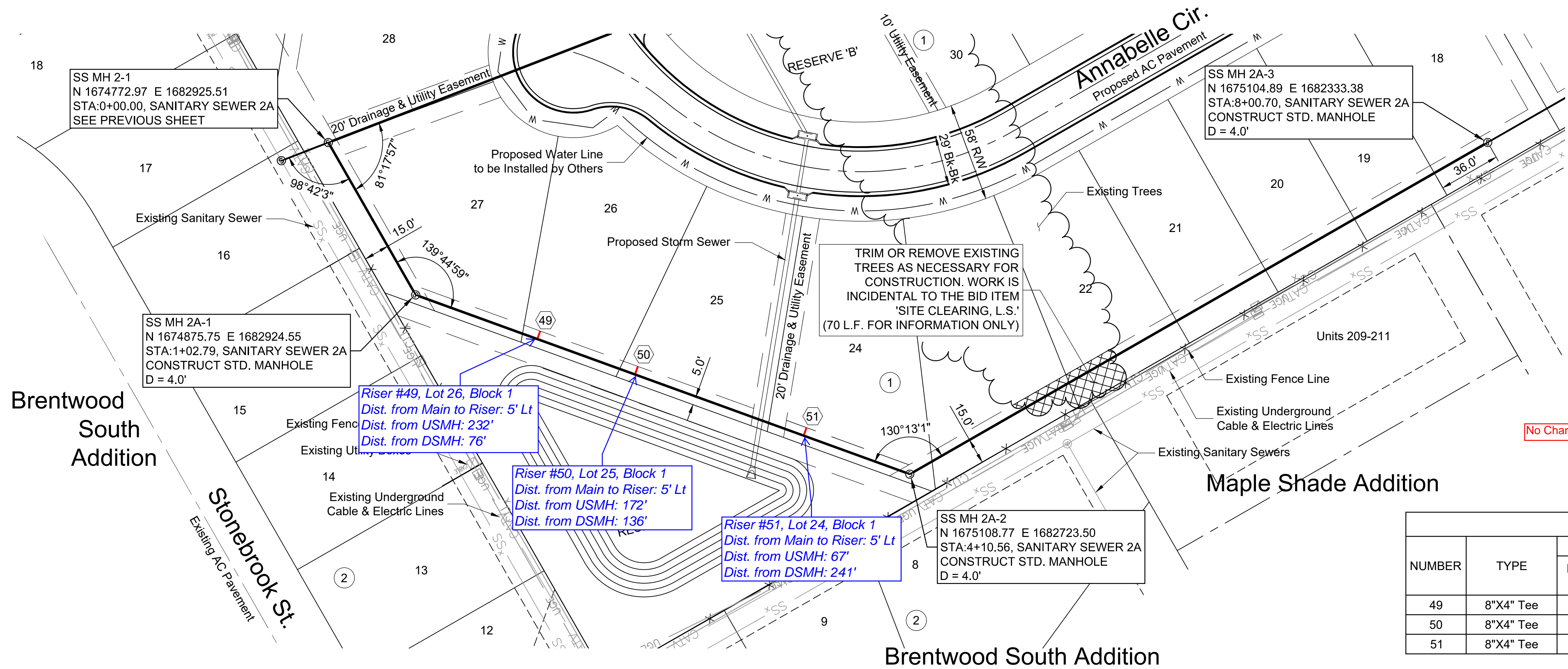
BAR IS ONE INCH ON ORIGINAL DRAWING
IF NOT ONE INCH ON THIS SHEET, ADJUST SCALES ACCORDINGLY.

DRAWING NUMBER

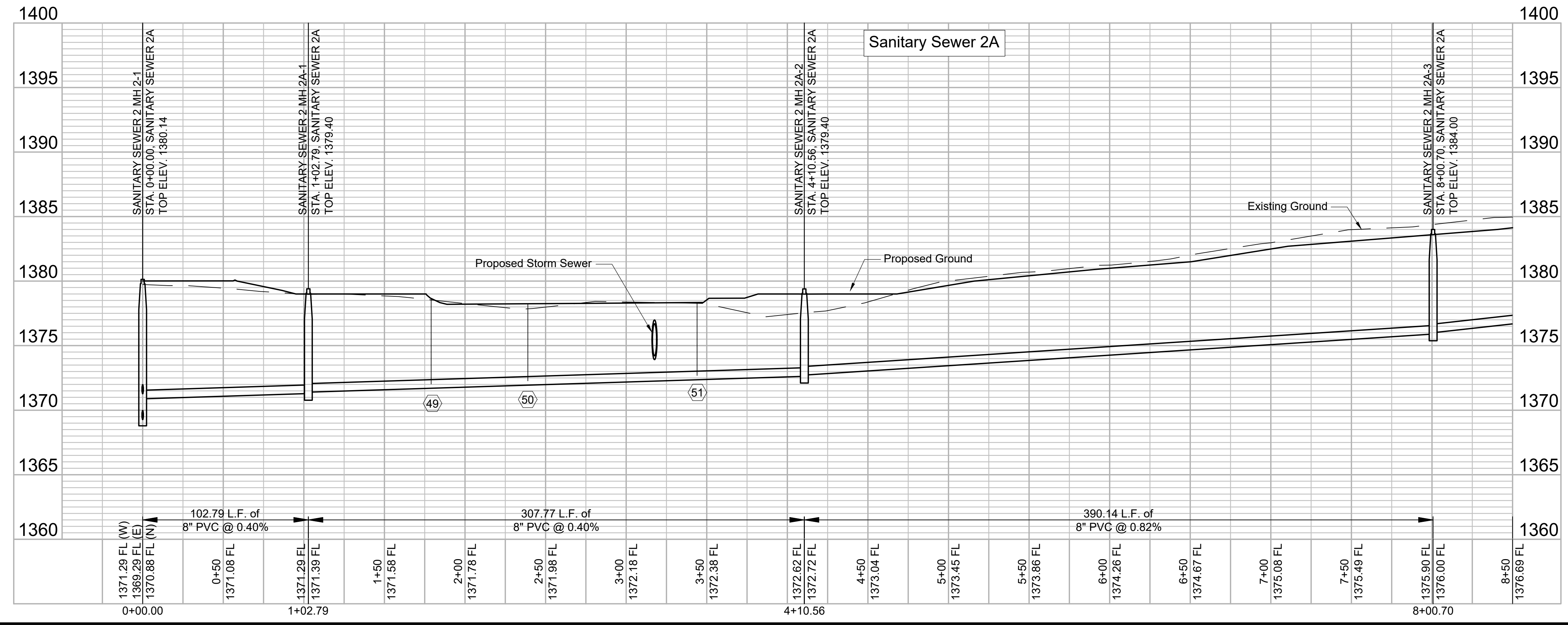
SHEET NUMBER **5** OF **20**



© 2020 GARVER, LLC
 THIS DOCUMENT, ALONG WITH THE IDEAS AND DESIGNS CONVEYED HEREIN, SHALL BE CONSIDERED INSTRUMENTS OF PROFESSIONAL SERVICE AND ARE PROPERTY OF GARVER, LLC. ANY USE, REPRODUCTION, OR DISTRIBUTION OF THIS DOCUMENT, ALONG WITH THE IDEAS AND DESIGN CONTAINED HEREIN, IS PROHIBITED UNLESS AUTHORIZED IN WRITING BY GARVER, LLC OR EXPLICITLY ALLOWED IN THE GOVERNING PROFESSIONAL SERVICES AGREEMENT FOR THIS WORK.



NUMBER	TYPE	SERVING			STATION/DIRECTION	FOR INFORMATION ONLY	
		LOT NO.	BLOCK NO.	LINE NO.		APPROX. LENGTH 4" PIPE	
						VERTICAL	HORIZONTAL
49	8"X4" Tee	26	1	2A	1+79 Left	6.5'	5.0'
50	8"X4" Tee	25	1	2A	2+39 Left	6.0'	5.0'
51	8"X4" Tee	24	1	2A	3+44 Left	5.5'	5.0'



File: L:\2019\19T41021 - VCRC Improvements\Drawings\C3D\SANITARY SEWERS\SANITARY SEWER 3.dwg Last Save: 1/14/2020 5:26 PM Last saved by: CDJurey
 Last plotted by: Jurey, Caleb D. Plot Style: --- Plot Scale: 1:2.565 Plot Date: 1/15/2020 9:25 AM Plotter used: None

BY			
DESCRIPTION			
DATE			
REV.			

CITY OF WICHITA
 WICHITA, KANSAS

CHALET RIDGE ADDITION
 SANITARY SEWER

SANITARY SEWER 2A

JOB NO.: 19T41021
 DATE: JAN 2020
 DESIGNED BY: CMB
 DRAWN BY: CDJ

BAR IS ONE INCH ON ORIGINAL DRAWING
 IF NOT ONE INCH ON THIS SHEET, ADJUST SCALES ACCORDINGLY.

DRAWING NUMBER

SHEET NUMBER **6** OF **20**



© 2020 GARVER, LLC
 THIS DOCUMENT, ALONG WITH THE IDEAS AND DESIGNS CONVEYED HEREIN, SHALL BE CONSIDERED INSTRUMENTS OF PROFESSIONAL SERVICE AND ARE PROPERTY OF GARVER, LLC. ANY USE, REPRODUCTION, OR DISTRIBUTION OF THIS DOCUMENT, ALONG WITH THE IDEAS AND DESIGN CONTAINED HEREIN, IS PROHIBITED UNLESS AUTHORIZED IN WRITING BY GARVER, LLC OR EXPLICITLY ALLOWED IN THE GOVERNING PROFESSIONAL SERVICES AGREEMENT FOR THIS WORK.



REV.	DATE	DESCRIPTION	BY



CITY OF WICHITA
 WICHITA, KANSAS
 CHALET RIDGE ADDITION
 SANITARY SEWER

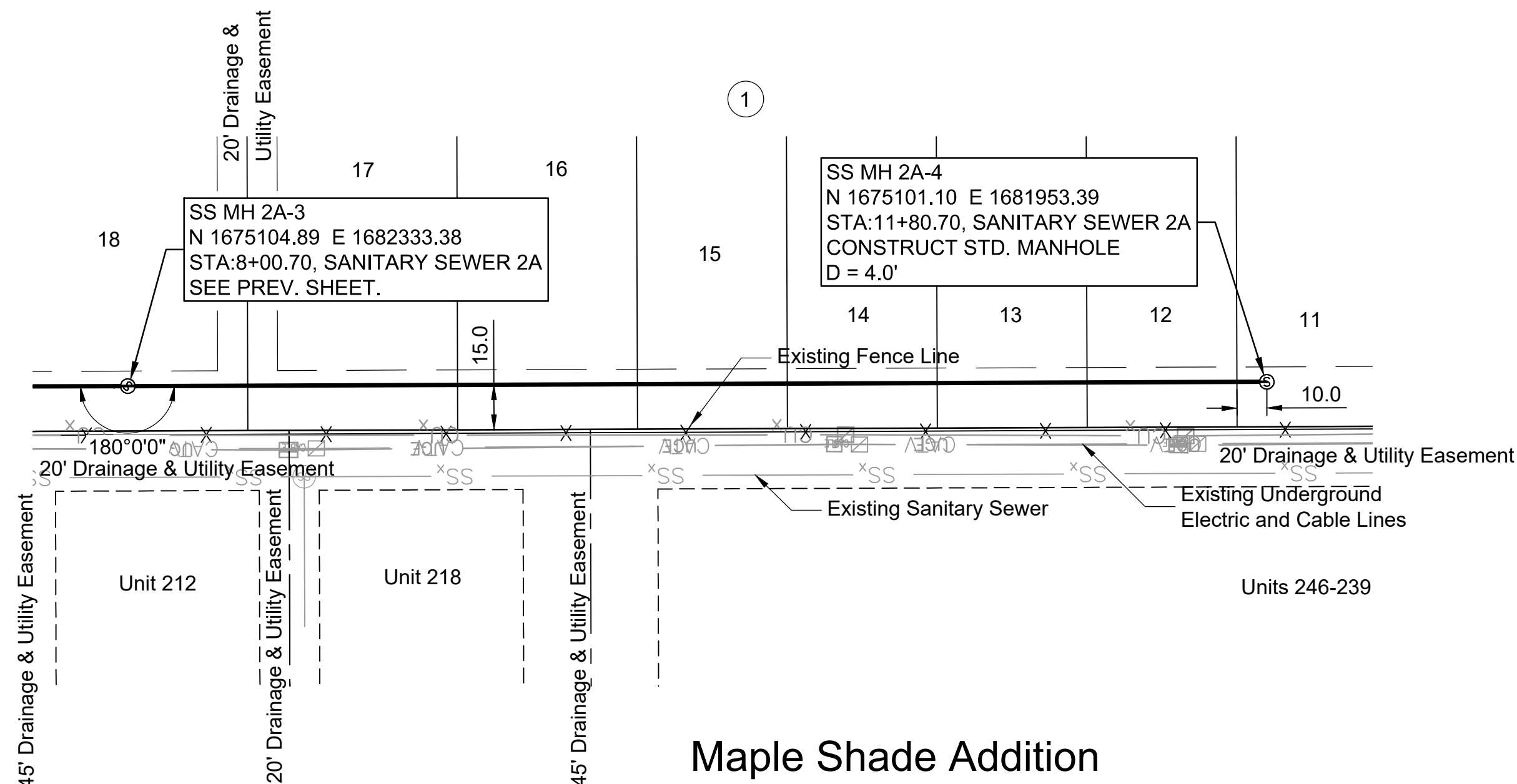
SANITARY SEWER 2A & 2B

JOB NO.: 19T41021
 DATE: JAN 2020
 DESIGNED BY: CMB
 DRAWN BY: CDJ

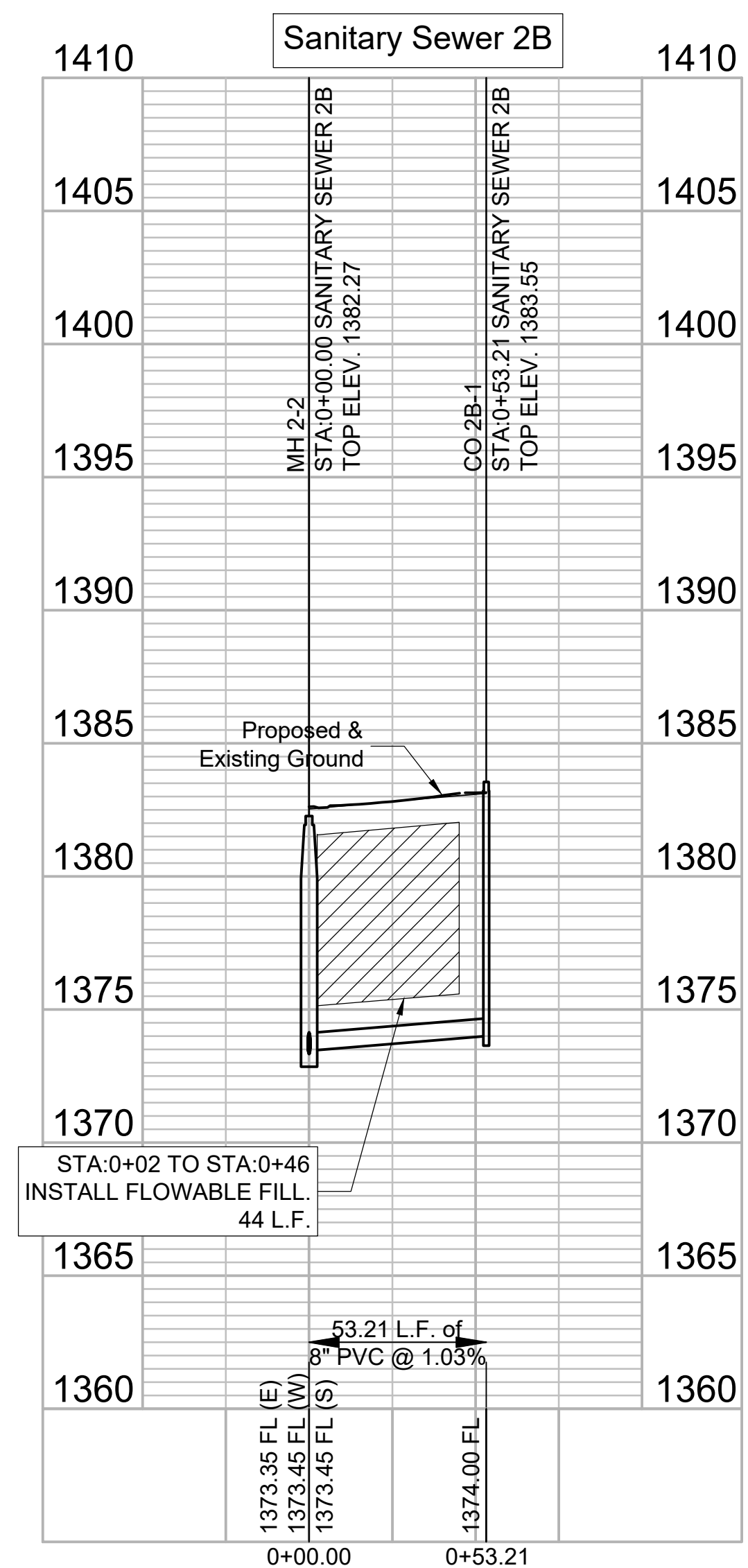
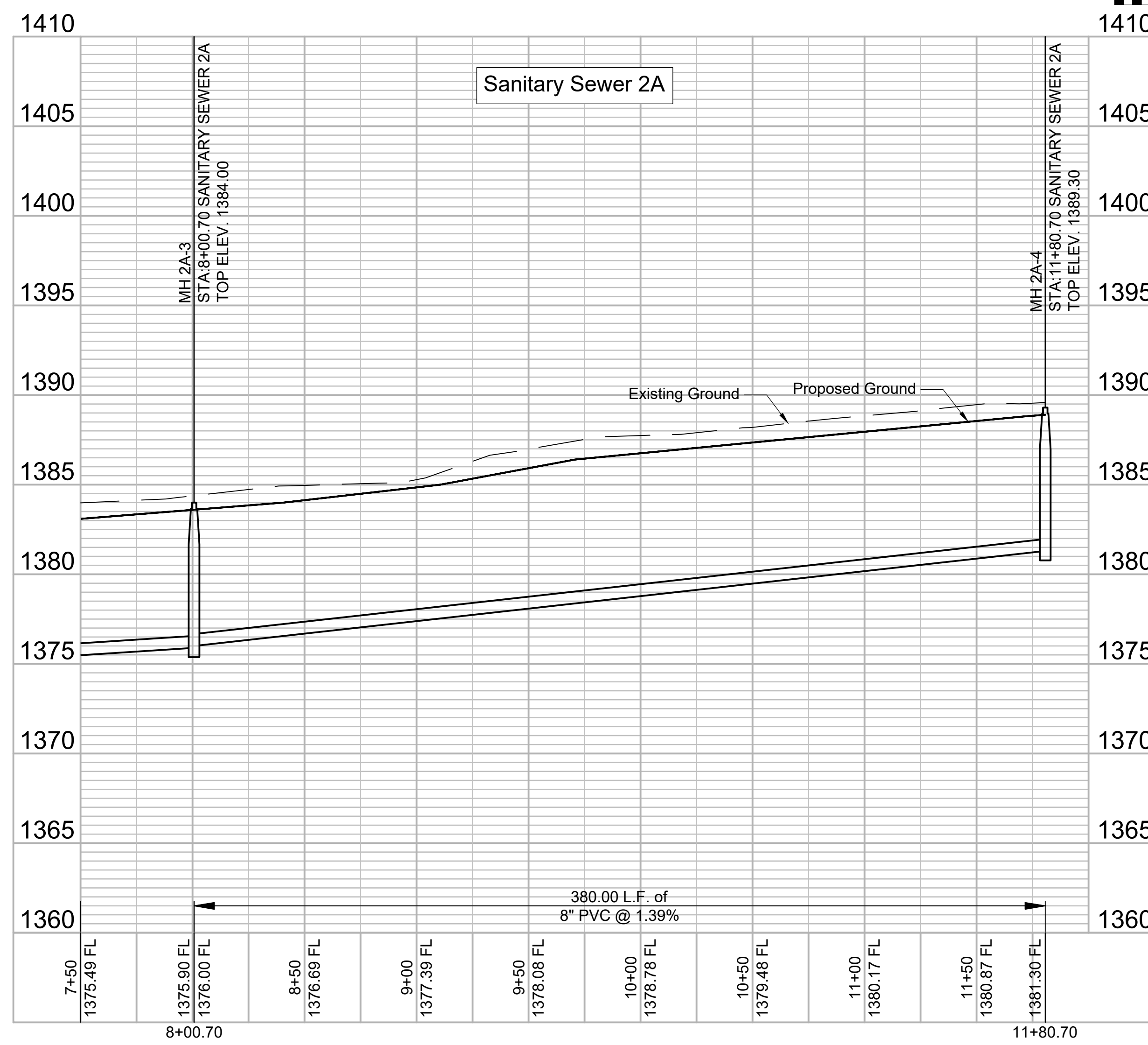
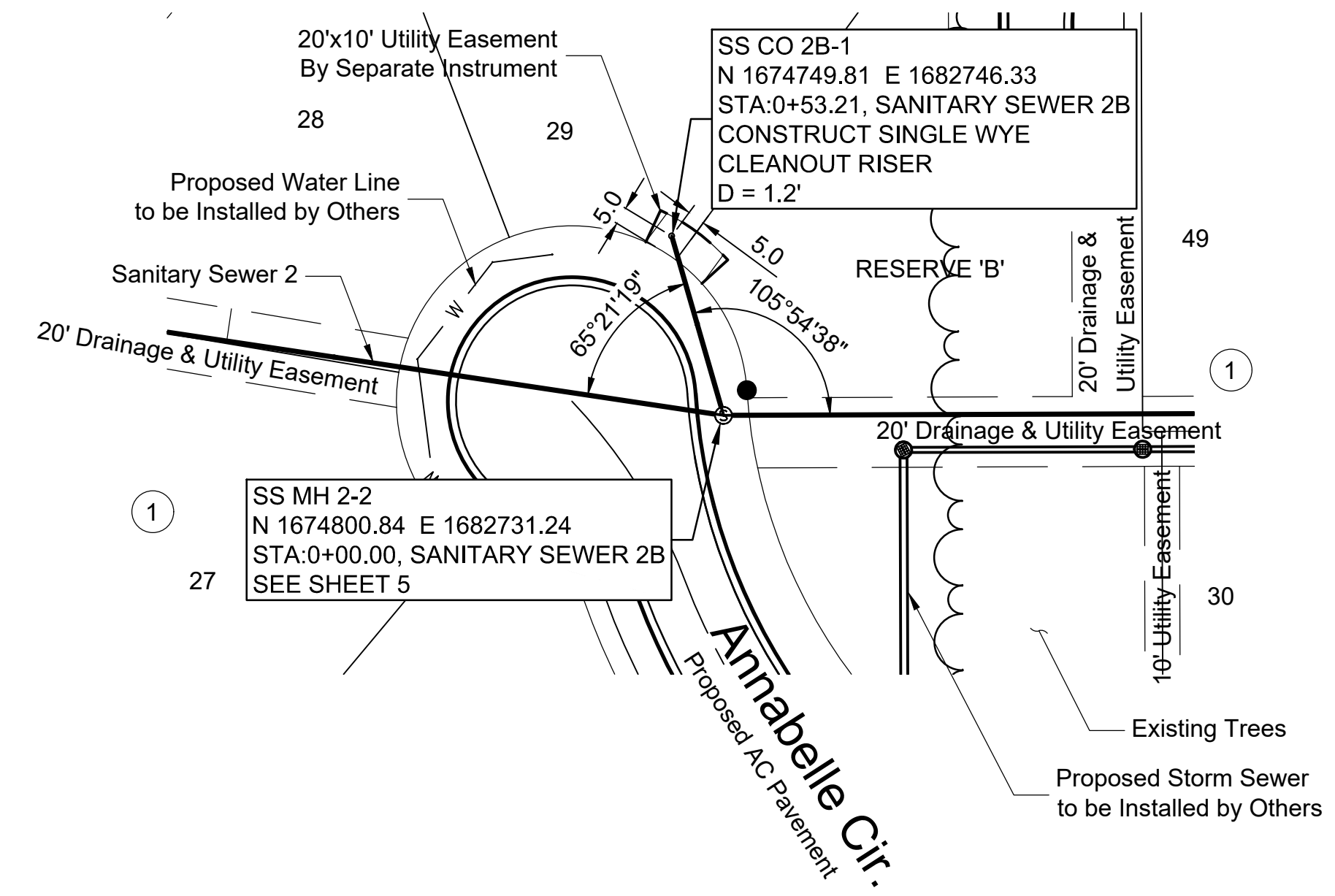
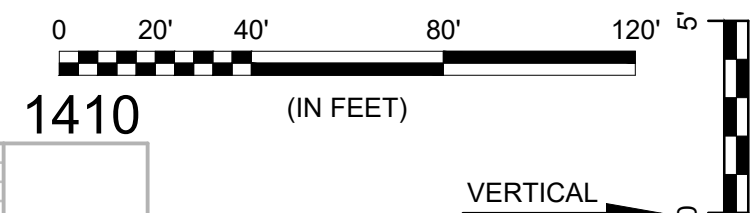
BAR IS ONE INCH ON ORIGINAL DRAWING
 IF NOT ONE INCH ON THIS SHEET, ADJUST SCALES ACCORDINGLY.

DRAWING NUMBER

SHEET NUMBER **7** OF **20**



No Changes Made



File: L:\2019\19T41021 - VCRC Improvements\Drawings\C3D\SANITARY SEWERS\SANITARY SEWER 3A.dwg Last Save: 1/14/2020 4:48 PM Last saved by: CDJurey
 Last plotted by: Jurey, Caleb D. Plot Date: 1/15/2020 10:29 AM Plotter used: None