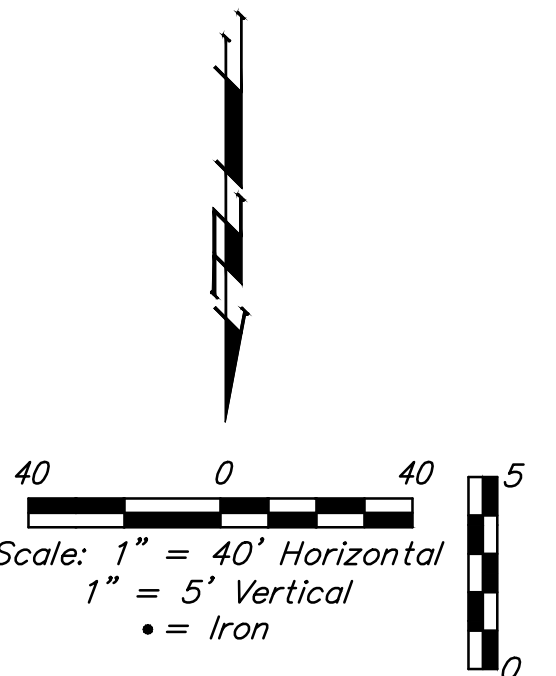
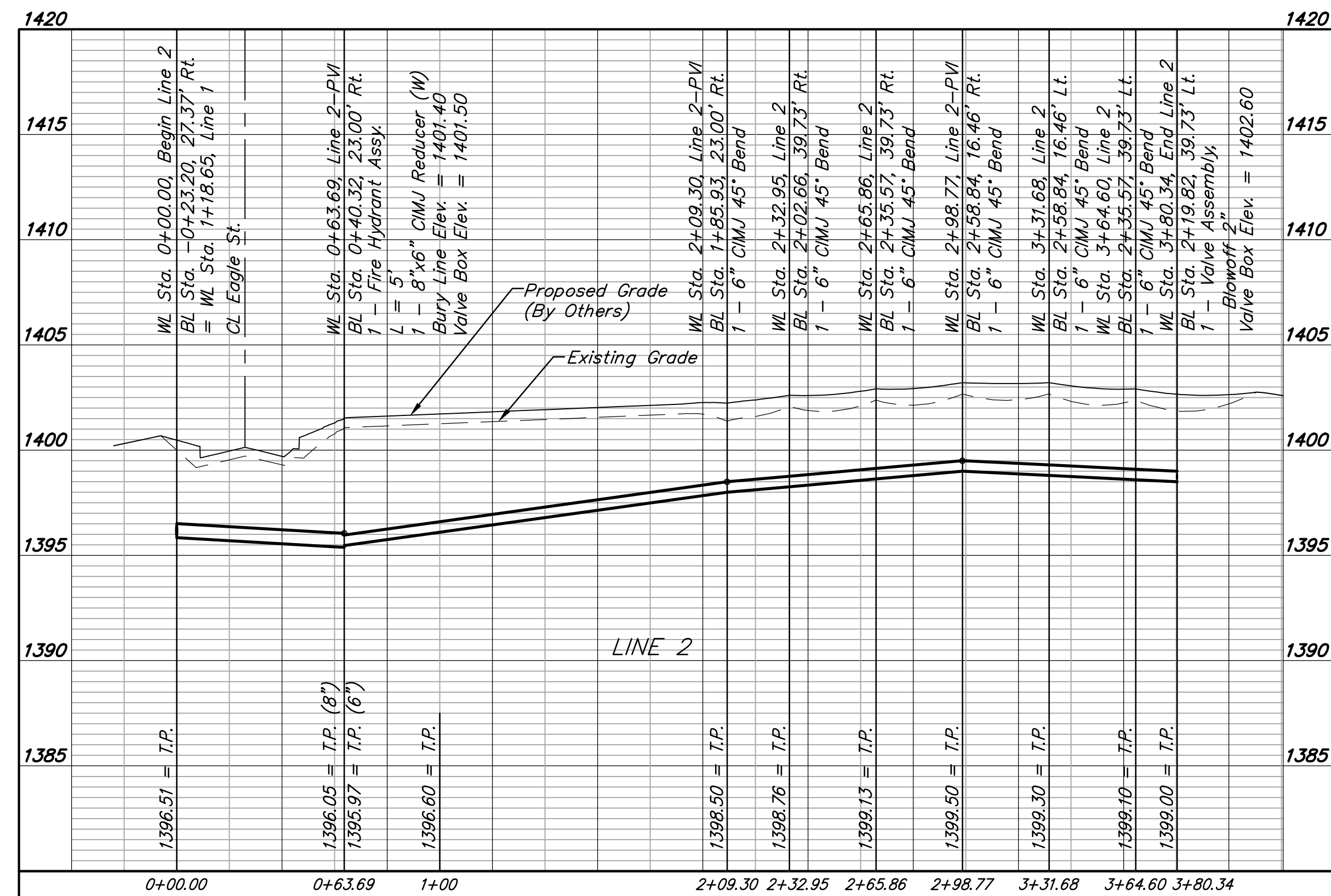
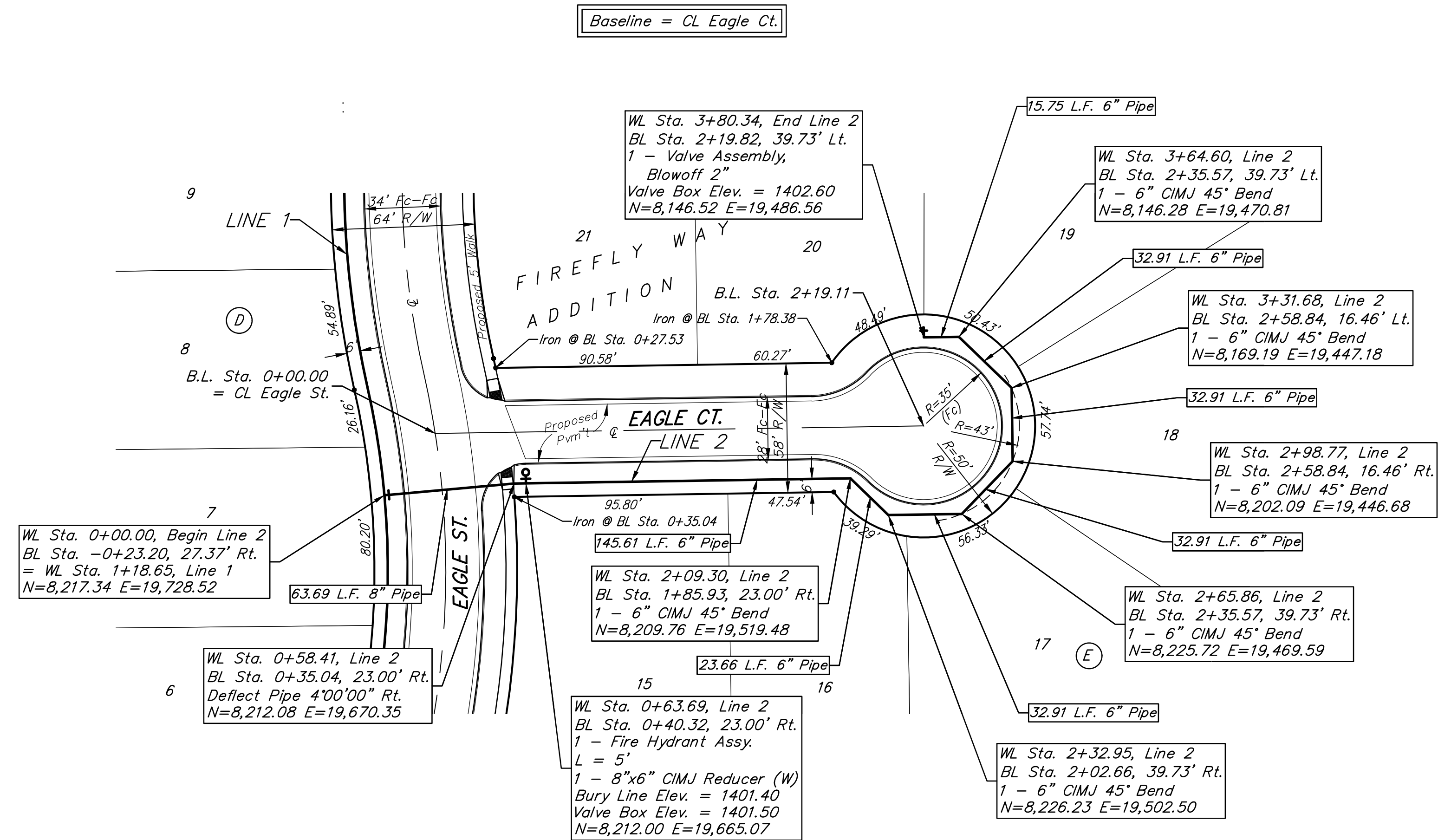


BENCHMARKS:
 BM#1: RR spike in high line pole, 40' west and 30' south of Lot 60, Block D, Firefly Way Addition.
 Elev. = 1399.54 NAVD88

BM#2: Benchmark disc in top of curb, adjacent to fire hydrant 15' south of SE corner of Lot 2, Block C, Firefly Way Addition.
 Elev. = 1396.95 NAVD88



Baughman Company, P.A.
 ENGINEERING ARCHITECTURE
 1100 W. 10th Street, Suite 200
 Oklahoma City, Oklahoma 73106
 Phone: (405) 241-1100
 Fax: (405) 241-1101
 www.baughmanco.com

FIREFLY WAY ADD. Ph. 4
LINE 2
 WATER DISTRIBUTION SYSTEM

JUSTINE GOTTI
 PROFESSIONAL ENGINEER
 17519
 8/10/2020
 KANSAS