

GENERAL NOTES

- ALL ELECTRICAL WORK SHALL COMPLY WITH THE LATEST EDITION OF THE NATIONAL ELECTRICAL CODE (NEC) & THE AMERICANS WITH DISABILITIES ACT (ADA).
- REFER TO RELATED ARCHITECTURAL, MECHANICAL, STRUCTURAL, AND CIVIL DRAWINGS FOR RELATED INFORMATION.
- REFER TO THE SPECIFICATIONS FOR DATA NOT ON THE DRAWINGS.
- E.C. SHALL REFER TO MECHANICAL DRAWINGS AND SPECIFICATIONS FOR THE REQUIREMENTS ASSOCIATED WITH WIRING AND CONNECTION OF INTERLOCKING AND CONTROLS OF MECHANICAL UNITS AND THERMOSTAT LOCATIONS.
- COORDINATE OUTLET BOX LOCATIONS WITH MASONRY TO MINIMIZE CUTTING OF BRICK OR BLOCK.
- ALL MOUNTING HEIGHTS TO CENTERLINE OF ITEM UNLESS OTHERWISE NOTED. VERIFY ALL OUTLET LOCATIONS ON THE JOB PRIOR TO ROUGH-IN.
- CONDUIT RUN W/CONDUCTORS AS INDICATED & GROUND WIRE SIZED PER N.E.C. 250.122. CONDUIT SIZE AS REQUIRED.
- WHEN INCREASED CONDUCTOR SIZES ARE SHOWN ON THE PLANS, THE LARGER CONDUCTOR SIZE SHALL BE USED THROUGHOUT THE LENGTH OF THE CIRCUIT, INCLUDING NEUTRAL AND GROUND.
- "CT" INDICATED ADJACENT TO DEVICE INDICATES DEVICE MOUNTED ABOVE BACKSPLASH OF COUNTER TOP. VERIFY EXACT HEIGHT WITH ARCHITECTURAL PLANS AND ELEVATIONS.
- BRANCH CIRCUITS ARE INDICATED AS ONE CIRCUIT HOME RUNS WITH INDIVIDUAL NEUTRALS. A MAXIMUM OF THREE CIRCUITS (MAXIMUM OF THREE PHASE CONDUCTORS) MAY BE GROUPED IN A SINGLE CONDUIT. WHERE MULTIPLE CIRCUITS ARE LOCATED IN THE SAME RACEWAY, JUNCTION BOX OR ENCLOSURE, NEUTRALS SHALL BE MARKED OR LABELED TO INDICATE WHICH CIRCUIT THEY ARE ASSOCIATED WITH. SEE SPECIFICATION SECTION "LOW VOLTAGE ELECTRICAL POWER CONDUCTORS AND CABLES" FOR ADDITIONAL INFORMATION.
- JUNCTION BOX OR RECEPTACLE FOR DRINKING FOUNTAINS SHALL BE LOCATED BEHIND THE EQUIPMENT SKIRT UNLESS OTHERWISE NOTED. COORDINATE CONNECTION TYPE AND LOCATION WITH EQUIPMENT PROVIDED.
- LABEL THE FRONT OF EACH RECEPTACLE COVERPLATE WITH PANEL DESIGNATION AND CIRCUIT NUMBER USING CLEAR THERMAL TRANSFER (ELECTRONIC DYMO) LABELS WITH 1/8" HIGH BLACK LETTERS (OR CONTRASTING COLOR IF COVERPLATES ARE BLACK OR BROWN). LABELS SHALL BE SUITABLE FOR INDOOR/OUTDOOR USE. LABEL THE BACK OF EACH LIGHT SWITCH COVERPLATE WITH PANEL DESIGNATION AND CIRCUIT NUMBER USING A FINE BLACK PERMANENT MARKER.
- PROVIDE 18" LONG (MIN.) CONDUIT SLEEVES THRU ALL WALLS WHERE CABLES ARE INDICATED OR REQUIRED TO PASS THRU WALLS. PROVIDE BUSHINGS ON BOTH ENDS. SIZE CONDUIT FOR CABLES INSTALLED. AT CABLE TRAYS, PROVIDE ONE 4" CONDUIT SLEEVE FOR EACH 4" WIDTH OF CABLE TRAY. MAXIMUMS SHALL BE:
1" C. = 10 CABLES
2 1/2" C. = 20 CABLES
3" C. = 30 CABLES
4" C. = 50 CABLES
- PROVIDE DIMMER PER THE SPECIFICATIONS. COORDINATE DIMMER TYPE AND WIRING WITH ASSOCIATED LIGHT FIXTURE DIMMING REQUIREMENTS (I.E. 3-WIRE, 0-10V, ELECTRONIC OR MAGNETIC LOW VOLTAGE, ETC.) OR WITH LIGHTING CONTROL SYSTEM PROPRIETARY REQUIREMENTS (I.E. LUTRON, nLIGHT, DALI, ETC.) AS NECESSARY. 3-WIRE DIMMERS SHALL BE PROVIDED WITH A DEDICATED NEUTRAL FOR EACH CONTROL ZONE. 0-10V DIMMERS SHALL BE PROVIDED WITH DIM ON/OFF CONTROL. COORDINATE PHASE CONTROL OF LED DRIVERS (I.E. REVERSE PHASE, FORWARD PHASE, ETC.) WITH LIGHT FIXTURE MANUFACTURER'S RECOMMENDATIONS. LOW VOLTAGE CONTROL WIRING IS NOT SHOWN ON PLANS FOR CLARITY, BUT SHALL BE PROVIDED AS REQUIRED.

COMMUNICATION / DATA

- EACH DATA, TELEPHONE, VIDEO, OR OTHER SYSTEMS OUTLET REQUIRES 1" C. WITH PULL ROPE STUBBED 6" ABOVE NEAREST ACCESSIBLE CEILING UNLESS OTHERWISE NOTED ON PLANS. CONDUITS STUBBED UP ABOVE CEILINGS SHALL BE TURNED OUT 90 DEGREES. PROVIDE INSULATED BUSHINGS ON ALL CONDUITS. LABEL CONDUIT TO IDENTIFY ITS INTENDED USE (I.E. TELEPHONE, DATA, ETC.).
- RUN CABLES CONTINUOUS FROM JACK TO ASSOCIATED SYSTEM PATCH PANEL IN CONDUIT, CABLE TRAY, OR J-HOOKS PER THE PLANS AND SPECIFICATIONS. NUMBER BESIDE CABLE SYMBOL INDICATES QUANTITY OF CABLES REQUIRED PER HOME RUN.
- PROVIDE QUANTITY AND TYPE OF JACKS PER THE DRAWINGS, SPECIFICATIONS AND DETAILS. PROVIDE JACK AND CABLE LABELING PER THE SPECIFICATIONS.

FIRE ALARM

- THE FIRE ALARM SYSTEM SHOWN HAS BEEN DESIGNED PER THE REQUIREMENTS OF NFPA 72, 2013 EDITION. DEVICES SHOWN INDICATE DESIGN INTENT AND SHALL BE THE MINIMUM PROVIDED. SYSTEM SUPPLIER SHALL PROVIDE ANY ADDITIONAL CODE REQUIRED DEVICES OR DEVICES REQUIRED BY THE AUTHORITY HAVING JURISDICTION.
- FIELD VERIFY LOCATIONS OF AREA SMOKE DETECTORS AND HEAT DETECTORS. DO NOT LOCATE WITHIN 36" OF A HVAC DIFFUSER (SUPPLY OR RETURN), IN A DIRECT AIR FLOW, WITHIN 36" OF A SPRINKLER HEAD, OR WITHIN 36" OF THE TIP OF A CEILING FAN BLADE. SMOKE DETECTORS FOR DOOR RELEASE SHALL BE LOCATED ON THE CENTER LINE OF THE DOOR AND A MAXIMUM OF 5 FEET FROM THE DOOR. THE MINIMUM DISTANCE FROM THE DOOR IS THE DEPTH OF THE WALL SECTION ABOVE THE DOOR, BUT NOT LESS THAN 12".
- FAN SHUTDOWN RELAY WIRING SHALL BE LOCATED WITHIN 3 FEET OF THE FAN CONTROLS AND THE WIRING TO THE RELAY SHALL BE MONITORED.
- LABEL REMOTE ALARM INDICATOR FOR DUCT MOUNTED SMOKE DETECTORS (I.E. RTU=1 SUPPLY, RTU=2 RETURN, FIRE/SMOKE DAMPER, ETC.). DUCT DETECTORS SHOULD BE LOCATED IN THE AREA BETWEEN 6 AND 10 DUCT EQUIVALENT DIAMETERS OF STRAIGHT, UNINTERRUPTED DUCTWORK. DUCT DETECTORS FOR FIRE/SMOKE DAMPERS SHOULD BE LOCATED BETWEEN THE LAST INLET OR OUTLET UPSTREAM OF THE DAMPER AND THE FIRST INLET OR OUTLET DOWNSTREAM OF THE DAMPER.
- PROVIDE 120V POWER AND FUSTAT FOR EACH FIRE/SMOKE DAMPER. INTERLOCK WITH FIRE ALARM CONTROL PANEL TO CLOSE THE FIRE/SMOKE DAMPER UPON ANY ALARM AT THE FIRE ALARM CONTROL PANEL AND TO SHUTDOWN THE ASSOCIATED MECHANICAL UNIT.

SYMBOL LIST

SYMBOL	DESCRIPTION	MOUNTING	SYMBOL	DESCRIPTION	MOUNTING
POWER					
	SINGLE GROUNDED RECEPTACLE	18" AFF		BRANCH CIRCUIT PANEL AND PANEL DESIGNATION	72" TO TOP
	DUPLEX GROUNDED RECEPTACLE	18" AFF		ELECTRICAL DISTRIBUTION EQUIP	
	DUPLEX GROUNDED RECEPTACLE	CEILING		EQUIPMENT - SEE EQUIPMENT CONNECTION SCHEDULE	
	DOUBLE DUPLEX GROUNDED REC	18" AFF		CONDUIT SLEEVE (GEN NOTE 13)	
	GROUND FAULT DUPLEX REC	18" AFF		CABLE TRAY (GEN NOTE 14)	
	GRD FAULT DOUBLE DUPLEX REC	18" AFF		MOTOR	
	DUPLEX GRD REC BOTTOM SWITCHD	18" AFF		DISCONNECT SWITCH	
	TAMPER-PROOF DUPLEX REC	18" AFF		MANUAL STARTER	
	TAMPER-PROOF GFCI DUPLEX REC	18" AFF		CIRCUIT BREAKER	
	SPECIAL OUTLET (SEE SCHEDULE OR AS NOTED)	FLOOR/WALL		STARTER OR ATS (AS NOTED)	
	SPECIAL DEVICE (AS NOTED)			COMBINATION STARTER/DISC	
	FEEDER DESIGNATION			RELAY	
	JUNCTION BOX - 1-GANG			PUSHBUTTON (1-BUTTON, 2-BUTTON)	46" AFF
	JUNCTION BOX - 2-GANG			BOX MOUNTED TRANSFORMER	
	FUSTAT BUSS #SSY			CONTACTOR	
	THERMOSTAT/TEMP SENSOR	46" AFF		METER	
	PLUG LOAD SENSOR	CEILING		PLUGMOLD SURFACE RACEWAY	WALL
	HANDICAP DOOR PUSHBUTTON	36" AFF		BUSDUCT PLUG	
COMMUNICATION / DATA					
	1-DATA OUTLET & JACK (GEN NOTES T1 & T3)	18" AFF		2-DATA OUTLETS & JACKS (GEN NOTES T1 & T3)	18" AFF
	1-VOICE OUTLET & JACK (GEN NOTES T1 & T3)	18" AFF		3-DATA OUTLETS & JACKS (GEN NOTES T1 & T3)	18" AFF
	1-VOICE/1-DATA OUTLET & JACKS (GEN NOTES T1 & T3)	18" AFF		4-DATA OUTLETS & JACKS (GEN NOTES T1 & T3)	18" AFF
	1-VOICE/2-DATA OUTLETS & JACKS (GEN NOTES T1 & T3)	18" AFF		2-VOICE/2-DATA OUTLETS & JACKS (GEN NOTES T1 & T3)	18" AFF
	CABLE TV OR VIDEO OUTLET & CONNECTOR (GEN NOTES T1 & T3)	18" AFF		1-VOICE/3-DATA OUTLETS & JACKS (GEN NOTES T1 & T3)	18" AFF
	VOICE UTP CABLE HOME RUN	GEN NOTE T2		### = TERMINATION ROOM	SEE HOR. CABLE SCHEDULE
	DATA UTP CABLE HOME RUN	GEN NOTE T2		XX = CABLE CONFIGURATION	
	VIDEO COAX CABLE HOME RUN	GEN NOTE T2		FIBER OPTIC CABLE HOME RUN (SINGLE MODE)	GEN NOTE T2
	FIBER OPTIC CABLE HOME RUN (MULTI MODE)	GEN NOTE T2			
FIRE ALARM					
	FIRE ALARM CONTROL PANEL	WALL		FIRE ALARM REMOTE ANNUNCIATOR	WALL
	FIRE ALARM MANUAL STATION	46" AFF		FIRE ALARM SPEAKER	WALL
	FIRE ALARM HORN	BOTTOM 80"		COMB FA SPEAKER & VISUAL SIGNAL	BOTTOM 80"
	FIRE ALARM VISUAL SIGNAL	BOTTOM 80"		COMB FA HORN & VISUAL SIGNAL	CEILING
	COMB. F.A. HORN & VISUAL SIGNAL	BOTTOM 80"		FIRE ALARM VISUAL SIGNAL	CEILING
	CHIME	WALL		FIRE ALARM CONTROL MODULE	
	FIRE SPRINKLER ALARM BELL	WALL		FIRE ALARM MONITOR MODULE	
	F.A. RELAY (GEN NOTE F3)			FIRE SPRINKLER PRESSURE SWITCH	
	IONIZATION AREA SMOKE DETECTOR (GEN NOTE F2)			FIRE ALARM SPEAKER	CEILING
	PHOTO ELECTRIC AREA SMOKE DETECTOR (GEN NOTE F2)			FIRE ALARM SPEAKER	WALL
	DUCT SMOKE DETECTOR (GEN NOTE F4)	DUCTWORK		HEAT DETECTOR (GEN NOTE F2)	
	DUCT SMOKE DETECTOR & FIRE/SMOKE DAMPER (GEN NOTES F4 & F5)	DUCTWORK		FIRE SPRINKLER TAMPER SWITCH	SPRKL RSR
PEN WEIGHT LEGEND					
ALL DEVICES, LIGHT FIXTURES, ETC., DRAWN IN DARK SOLID LINES ARE NEW TO BE INSTALLED			ALL DEVICES, LIGHT FIXTURES, ETC., DRAWN IN DARK DASHED LINES ARE EXISTING TO BE REMOVED		
	NEW DUPLEX GROUNDED RECEPTACLE			DUPLEX GROUNDED REC TO BE REMOVED	
	NEW LIGHT FIXTURE			LIGHT FIXTURE TO BE REMOVED	
ALL DEVICES, LIGHT FIXTURES, ETC., DRAWN IN LIGHT SOLID LINES ARE EXISTING TO REMAIN			ALL DEVICES, LIGHT FIXTURES, ETC., DRAWN IN LIGHT DASHED LINES ARE EXISTING TO BE RELOCATED		
	EXISTING DUPLEX GROUNDED REC TO REMAIN			DUPLEX GROUNDED REC TO BE RELOCATED	
	EXISTING LIGHT FIXTURE TO REMAIN			LIGHT FIXTURE TO BE RELOCATED	
--- SYMBOL LIST IS FOR REFERENCE ONLY. ALL SYMBOLS MAY NOT BE USED ON THIS PROJECT. ---					

SYMBOL LIST

SYMBOL	DESCRIPTION	MOUNTING	SYMBOL	DESCRIPTION	MOUNTING
ABBREVIATIONS					
NL	NIGHT LIGHT - WIRE AHEAD OF CONTROLS		AF	ABOVE FINISHED FLOOR	
EM	ON EMERGENCY POWER		AFG	ABOVE FINISHED GRADE	
WP	WEATHERPROOF		DF	DRINKING FOUNTAIN - SEE GENERAL NOTE 11	
CT	COUNTERTOP (SEE GEN. NOTE 9)				
UON	UNLESS OTHERWISE NOTED				
W	WALL				
CONDUIT AND WIRING					
	EMERGENCY CIRCUIT	CLG/WALL		CONDUIT HOME RUN, 1 CIRCUIT. 2#12 & 1#12 GRD. - 1/2" C.	CLG/WALL
	MASTER/SLAVE FIXTURE WHIP	CEILING		CONDUIT HOME RUN, 2 CIRCUITS. 4#12 & 1#12 GRD. - 1/2" C.	CLG/WALL
	LOW VOLTAGE WIRING	CLG/WALL		CONDUIT HOME RUN, 3 CIRCUITS. 6#12 & 1#12 GRD. - 1/2" C.	CLG/WALL
	CDT RUN 2#12 & 1#12 GRD. - 1/2" C. OR CDT RUN AS NOTED ON PLAN	CLG/WALL		CONDUIT HOME RUN, 2 CIRCUITS. 2#10 & 1#10 GRD.	CLG/WALL
	CDT RUN 2#12 & 1#12 GRD. - 3/4" C. OR CDT RUN AS NOTED ON PLAN	EARTH/FLOOR		PHASE CONDUCTORS/ NEUTRAL CONDUCTOR (#12 UON) SWITCH LEGS (#12 UON) GROUND CONDUCTOR (#12 UON)	
	CONDUIT SEAL OFF				
LIGHTING, SWITCHES AND SENSORS					
	LIGHT FIXTURE & FIXTURE LETTER	CEILING		SWITCHES (1-POLE, 2-POLE, 3-WAY, 4-WAY)	46" AFF
	STRIP LIGHT FIXTURE & FIXT LETTER	CEILING		SWITCHES (KEYED, PILOT, TIMER)	46" AFF
	LIGHT FIXTURE & FIXTURE LETTER	CEILING		INDICATES SWITCHING SCHEME	
	LIGHT FIXTURE & FIXTURE LETTER	WALL		LOW VOLTAGE SWITCH	46" AFF
	EXIT SIGN (SHADING DENOTES EXIT FACE SIDE)	CEIL/WALL		ON/OFF SWITCH	46" AFF
	LIGHT FIXTURE & FIXTURE LETTER	WALL		ON/OFF/0-10V DIMMING SWITCH	46" AFF
	FIXTURE WITH SHADED LAMP(S) ON EMERGENCY POWER	CEILING		DUAL TECH ON/OFF SENSOR	46" AFF
	EMERGENCY BATTERY LIGHT FIXT	CEIL/WALL		16-SCENE WALL CONTROLLER	46" AFF
	COMB EXIT SIGN/EM BATTERY LIGHT	WALL		DUAL TECH ON/OFF/0-10V DIM SW	46" AFF
	LIGHT FIXTURE & FIXTURE LETTER	POLE		PIR SENSOR	CLG/WALL
	1 RELAY PIR SENSOR	46" AFF		DUAL TECHNOLOGY SENSOR	CLG/WALL
	2 RELAY PIR SENSOR	46" AFF		SWITCHING POWER PACK	
	1 RELAY DUAL TECH SENSOR	46" AFF		UL924 SWITCHING POWER PACK	
	2 RELAY DUAL TECH SENSOR	46" AFF		DIMMING POWER PACK	
	DIMMER (SEE GENERAL NOTE 14)	46" AFF		UL924 DIMMING POWER PACK	
	PHOTOCELL			AV SYSTEM/LIGHTING INTERFACE	
--- SYMBOL LIST IS FOR REFERENCE ONLY. ALL SYMBOLS MAY NOT BE USED ON THIS PROJECT. ---					

ELECTRICAL SHEET INDEX

SHEET NO.	SHEET TITLE
E0.1	ELECTRICAL LEAD SHEET
E0.2	ELECTRICAL ONE-LINE DIAGRAM AND SCHEDULES
E0.3	LIGHT FIXTURE SCHEDULE
E1.1	ELECTRICAL DETAILS
E1.2	ELECTRICAL DETAILS
E3.1	ELECTRICAL SITE PLAN
E4.1	ELECTRICAL POWER PLANS
E4.2	ELECTRICAL POWER ROOF PLAN
E5.1	ELECTRICAL LIGHTING PLANS

SPECIAL OUTLETS

MARK	DESCRIPTION
P	PROJECTOR: CEILING MOUNTED RECEPTACLE AND DATA FOR CONNECTION TO PROJECTOR. VERIFY LOCATION PRIOR TO INSTALLATION.
R	RANGE OUTLET: 50A, 125/250V, 3P, 4W SINGLE GROUNDED RECEPTACLE (NEMA 14-50R) WITH MATCHING STAINLESS STEEL COVERPLATE. VERIFY RANGE PLUG CONFIGURATION TO MATCH RECEPTACLE. RECEPTACLE TO BE MOUNTED SUCH THAT IT IS ACCESSIBLE VIA REMOVAL OF RANGE DRAWER, IF POSSIBLE.

PANELBOARD: LA

208Y/120 VOLTS, 3 PHASE, 4 WIRE
400 AMP MAIN BKR, SURFACE MTD.
W/SPD - SURGE PROTECTION DEVICE, S.E. SERVICE ENTRANCE LABELED W/GRD. BUS 65000 AIC LABELED

CIRC NO.	LOAD V. A.	LOAD TYPE	LOAD DESCRIPTION	AMP SIZE	AMP SIZE	LOAD DESCRIPTION	LOAD TYPE	LOAD V. A.	CIRC NO.			
1	400	RCPT	RM 106/105 RECEPT	1	20	A	20	1	EXTERIOR ROOF RECEPT	RCPT	200	2
3	1000	RCPT	RM 105 RECEPT	1	20	B	20	1	GAZEBO RECEPT	RCPT	400	4
5	800	RCPT	RM 105 RECEPT	1	20	C	20	1	NORTH INTERIOR LIGHTING	LGHT	1200	6
7	800	RCPT	RM 103 RECEPT	1	20	A	20	1	RM 103/102/101 LIGHTS	LGHT	1600	8
9	600	RCPT	RM102/101 RECEPT	1	20	B	20	1	RM 101 CHANDELIER LIGHTS	LGHT	1600	10
11	1600	RCPT	RM 104 DRINKING FOUNTAINS	1	20	C	20	1	GAZEBO LIGHTS	LGHT	400	12
13	1200	RCPT	RM 110/111/EXTERIOR RECEPT	1	20	A	20	1	EXTERIOR PERIMETER LIGHTS	LGHT	1200	14
15	600	RCPT	RM 108 RECEPT	1	20	B	20	1	EXTERIOR SITE LIGHTS	LGHT	900	16
17	1200	RCPT	RM 108 REFRIDGERATOR	1	20	C	20	1	RP-1	MOTR	350	18
19	1200	RCPT	RM 108 ICE MAKER	1	20	A	20	1	RM 101 CHANDELIER LIGHTS	LGHT	1600	20
21	400	RCPT	RM 108 RECEPT	1	20	B	20	1	RM 101 CHANDELIER LIGHTS	LGHT	1600	22
23	1200	RCPT	RM 108 REFRIDGERATOR	1	20	C	20	1	RM 105 LIGHTS	LGHT	1400	24
25	1200	RCPT	RM 108 MICROWAVE	1	20	A	20	1	EF-1	MOTR	696	26
27	1200	RCPT	RM 108 RECEPT	1	20	B	20	1	EF-2	MOTR	22	28
29	400	RCPT	RM 109 RECEPT	1	20	C	25	2	EUH-1	HEAT	3000	30
31	8000	RCPT	RM 108 RANGE	2	50	A	1	1				32
33												
35	1000	RCPT	RM 105 PROJECTOR	1	20	C	30	1	F-1	MOTR	1176	34
37			SPARE	1	20	A	20	1	SPARE			38
39			SPARE	1	20	B	20	1	SPARE			40
41			SPARE	1	20	C	20	1	SPARE			42
43	3141	H/M	CU-1	2	25	A	20	1	FIRE ALARM CONTROL PANEL	POWR	1000	44
45												
47	5117	MOTR	CU-2	2	50	C	20	1	EXTERIOR BOLLARD LIGHTS (ALT #1)	LGHT	200	46
49												
51	5242	MOTR	MSS-OU-1	2	50	B	80	3	RM 101/105 RECEPT	RCPT	800	50
53												
55	480	HEAT	GWH-1	1	20	A	1	1	RTU-1	MOTR	19599	52
57	1539	MOTR	MSS-OU-2	2	20	B	20	1	BRIDGE LIGHTS	LGHT	200	58
59												
61			SPARE	1	20	A	20	1	RM 110/111 PLUMBING SENSORS	POWR	500	60
63			SPARE	1	20	B	20	1	RM 102 PLUMBING SENSORS	POWR	100	62
65			SPARE	1	20	C	20	1	SPARE			64
67			SPACE			A	20	1	SPARE			66
69			SPACE			B	20	1	SPARE			68
71			SPACE			C			SPACE			70
73			SPACE			A			SPACE			72
75			SPACE			B			SPACE			74
77			SPACE			C			SPACE			76
79			SPACE			A			SPACE			78
81			SPACE			B			SPACE			80
83			SPACE			C			SPACE			82

- ① PROVIDE GFCI CIRCUIT BREAKER VIA CONTACTOR 'A'
- ② VIA CONTACTOR 'A'
- ③ FURNISH LOCK-ON CLIP

PANELBOARD: LA	CONNECTED KVA:						DEMAND FACTOR	CONT. KVA	CONT. FACT	SIZING AMPS:			
	PH-A	PH-B	PH-C	TOTAL	PH-A	PH-B				PH-C	TOTAL		
Lighting	4.4	4.3	3.0	11.7	1	11.7	1.25	40.6	45.8	44.8	31.2		
Receptacle (First 10000VA at 1 + remainder at 0.5)	9.8	9.2	6.8	10.0	1	10.0	> 1	49.7	56.7	53.2	39.3		
Largest Motor	0.0	0.0	0.0	0.0	1	0.0	0.25	6.9	6.9	6.9	6.9		
Motor	10.1	11.4	14.5	36.0	1	36.0	1	99.9	84.0	95.1	120.7		
Heating	3.3	1.3	1.5	6.0	1	6.0	1.25	21.0	34.0	13.3	15.6		
Power	1.1	0.0	0.5	1.6	1	1.6	1	4.4	9.2	0.0	4.2		
Spare				0.2	14.6	1		40.6	40.7	40.7	40.7		
TOTAL KVA:	28.6	26.2	26.3	81.1		87.9		TOTAL AMPS:	PH-A	PH-B	PH-C		
TOTAL AMPS:	238.6	218.3	219.1	225.2				263.1	277.2	254.0	258.6		

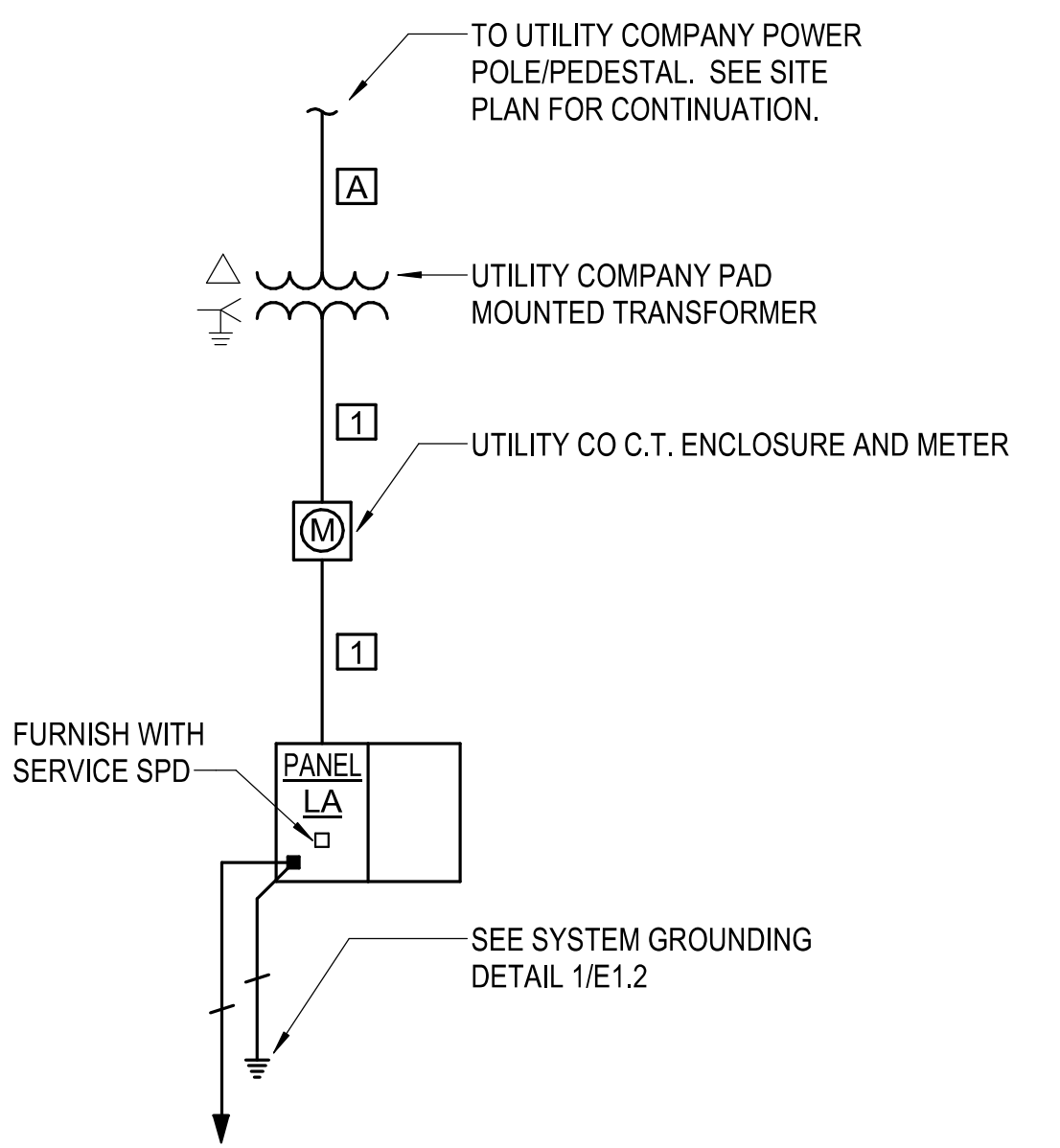
FEEDER SCHEDULE

DESIG.	EQUIPMENT SERVED	CONDUCTORS		GROUND SIZE PER SET	ISOLATED GROUND SIZE	CONDUIT SIZE PER SET	SPARE CONDUIT
		SETS	NO.				
A	UTILITY CO. PRIMARY	--	--	W/PULLROPE	--	4" C.	--
1	PANELBOARD:LA	1	4	#500 KCMIL CU	#3	4" C.	--

EQUIPMENT CONNECTION SCHEDULE

UNIT DESIG	UNIT VOLTAGE	LOAD			PANEL DEVICE		DEVICE AT UNIT				FEEDER DESCRIPTION OR SEE THE FEEDER SCHEDULE	REMARKS OR SEE THE INDICATED NOTES BELOW		
		H.P.	FLA	KVA	CIRCUIT NUMBER	BKR.	FUSE	NEMA START	BKR.	FUSE			NEMA START	
MECHANICAL EQUIPMENT CONNECTIONS														
RTU ROOF TOP UNIT														
①	208/3	27.3A	54.4	19.59	LA:52	80		3		100	70	3	1 3 #3 AWG THWN; #8 AWG GRD; 1-1/4" C.	NEMA-3R
EF EXHAUST FAN														
1	120/1	0.25	5.8	0.666	LA:26	20		1				1	FUSTAT	1 2 #12 AWG THWN; #12 AWG GRD; 1/2" C.
⑦	120/1	22	0.2	0.022	LA:28	20		1				1	TOGGLE	1 2 #12 AWG THWN; #12 AWG GRD; 1/2" C.
EUH ELECTRIC UNIT HEATER														
1	208/1	14.4	3.000	LA:30	25		2		30	20	2		1 2 #10 AWG THWN; #10 AWG GRD; 1/2" C.	
F FURNACE														
1	120/1	0.5	9.8	1.176	LA:34	20		1				1	FUSTAT	1 2 #12 AWG THWN; #12 AWG GRD; 1/2" C.
2	120/1	0.75	13.8	1.656	LA:36	30		1		20	20	1	MMS	1 2 #10 AWG THWN; #10 AWG GRD; 1/2" C.
CU CONDENSING UNIT														
1	208/1	2.8A	15.1	3.141	LA:43	25		2		30	20	2		1 2 #12 AWG THWN; #12 AWG GRD; 1/2" C.
2	208/1	21.8A	24.6	5.117	LA:47	50		2		60	35	2		1 2 #8 AWG THWN; #10 AWG GRD; 3/4" C.
MSS-IU MINI SPLIT UNIT - INDOOR														
①	208/1	2.3A	2.3	0.478					20	4	2	MMS	1 2 #12 AWG THWN; #12 AWG GRD; 1/2" C.	
⑤	208/1	0.4A	0.4	0.083					20	1	2	MMS	1 2 #12 AWG THWN; #12 AWG GRD; 1/2" C.	
MSS-OU MINI SPLIT UNIT - OUTDOOR														
①	208/1	22A	25.2	5.242	LA:51	50		2		60	40	2		1 2 #6 AWG THWN; #10 AWG GRD; 3/4" C.
⑤	208/1	7A	7.4	1.539	LA:57	20		2		30	15	2		1 2 #12 AWG THWN; #12 AWG GRD; 1/2" C.
GWH WATER HEATER														
1	120/1	4.0	0.48	LA:55	20		1					1	FUSTAT	1 2 #12 AWG THWN; #12 AWG GRD; 1/2" C.
RP RECIRCULATION PUMP														
1	120/1	350	2.9	0.35	LA:18	20		1				1	FUSTAT	1 2 #12 AWG THWN; #12 AWG GRD; 1/2" C.

- ① ALL CONNECTIONS AND ELECTRICAL EQUIPMENT LISTED IN SCHEDULE SHALL BE PROVIDED AND INSTALLED BY THE ELECTRICAL CONTRACTOR. FIELD VERIFY CONNECTION REQUIREMENTS AND EQUIPMENT PROVIDED BY OTHERS PRIOR TO ROUGH-IN.
- ② REFER TO MECHANICAL DRAWINGS AND SPECIFICATIONS FOR THE REQUIREMENTS ASSOCIATED WITH WIRING AND CONNECTIONS OF INTERLOCKING, THERMOSTAT LOCATIONS, EXHAUST FAN CONTROL SWITCHES, AND OTHER CONTROLS OF MECHANICAL EQUIPMENT.
- ③ SIZE FUSES FOR MOTOR FUSTATS BASED ON 125% OF MANUFACTURER'S NAMEPLATE FULL LOAD AMPERAGE UNLESS OTHERWISE NOTED ON THE DRAWINGS.
- ④ PROVIDE DUCT MOUNTED SMOKE DETECTORS IN THE SUPPLY AND RETURN DUCTS. VERIFY THE REQUIRED QUANTITY OF DUCT SMOKE DETECTORS FOR EACH UNIT WITH THE FINAL INSTALLED DUCTWORK LAYOUT TO MEET NFPA REQUIREMENTS. PROVIDE FAN SHUT DOWN RELAY TO SHUT DOWN MECHANICAL UNIT UPON ANY ALARM AT THE FIRE ALARM CONTROL PANEL.
- ⑤ MINI-SPLIT SYSTEM: INDOOR UNIT IS FED FROM THE OUTDOOR UNIT, PROVIDE INTERCONNECTING WIRING AS REQUIRED. PROVIDE A 2-POLE MANUAL MOTOR STARTING SWITCH WITHOUT OVERLOADS FOR INDOOR LOCAL DISCONNECTING MEANS. PROVIDE WITH APPROPRIATE COVERPLATE. FIELD VERIFY ALL CONNECTION REQUIREMENTS PRIOR TO ROUGH-IN WITH EQUIPMENT PROVIDED.
- ⑥ NOT USED
- ⑦ EXHAUST FAN TO BE CONTROLLED WITH LIGHT SWITCH.



A ELECTRICAL ONE-LINE DIAGRAM
NO SCALE

LIGHTING FIXTURE SCHEDULE

MARK	DESCRIPTION	MANUFACTURER		MANUFACTURER		MANUFACTURER		MANUFACTURER		LIGHT SOURCE			LENS/LOUVER/FINISH	W	L	D	REF. NOTE	REMARKS	
		NAME	MODEL	NAME	MODEL	NAME	MODEL	NAME	MODEL	#	TYPE	WATTS							VOLTS
B1	BOLLARD LIGHT	EATON	ABB-B1-LED-36-D1-A-B-K-8030							1	LED	13	UNV	BLACK	0.5	1.4	0.0	5	470LM 3000K 80CRI
DP	DECORATIVE PENDANT LIGHTING	ACCENT	CHANDELIER SILAS Y75U							1	LED	800	UNV	VINTAGE LED BULB	1.4	0.0	0.6	5	6480LM 3000K
DS	DECORATIVE WALL SCOFF	BARN LIGHT	BLE-W-PINDY2H-810-600							1	LED	60	UNV	VERIFY COLOR WITH ARCHITECT	1.1	1.3	0.8	5	800LM 3000K
EA	EMERGENCY FIXTURE	DUAL LITE	EV-4-D-02WAL							2	LED	4	UNV	WHITE					MOUNT AT 9'-0" AFF. PROVIDE BATTERY BACKUP.
EB	EMERGENCY FIXTURE	DUAL LITE	EVHC-6-06L	LITHONIA	ELM6L-UVOLT-LTP					2	LED	12	UNV	WHITE					MOUNT AT 14'-0" AFF. PROVIDE BATTERY BACKUP.
EC	EMERGENCY FIXTURE	LITHONIA	AFO-DB-MVOLT-N-SD							1	LED	3	UNV	DARK BRONZE					MOUNT AT 14'-0" AFF. PROVIDE BATTERY BACKUP.
G1	GOOSENECK LIGHT	BARN LIGHT	BLE-G-0114-850-WGG-975-CLR-LED16.8-3000K							1	LED	16	UNV	VERIFY COLOR WITH ARCHITECT	1.1	1.3	0.8	5	1600LM 3000K
GL	GAZEBO LIGHT	TLI	HRT-L18.4-12VDC-100-277V-RNG-BZ-30K-PCL-120							1	LED	18	UNV	FURNISH MOUNTING HARDWARE AS REQUIRED	1.4	0.0	0.6	5	1900LM 3000K
HA	6" RECESSED DOWNLIGHT WITH LENS	PORTFOLIO	LD6B-10-D010-EU6B-1020-80-30-6LB-M-O-LI							1	LED	13	UNV	CLEAR	0.5	1.4	0.0	5	1000LM 3000K 80CRI
HAE	6" RECESSED DOWNLIGHT WITH LENS	PORTFOLIO	LD6B-10-D010-EM14-EU6B-1020-80-30-6LB-M-O-LI							1	LED	13	UNV	CLEAR	0.5	1.4	0.0	5	1000LM 3000K 80CRI. PROVIDE BATTERY BACKUP.
K1	1X4 SURFACE FLAT PANEL	LITHONIA	EPANL-1X4-3000LM-80-30-MIN10-ZT-120							1	LED	35	UNV		1.0	4.0	0.3	5	3000LM 3000K 80CRI
K1E	1X4 SURFACE FLAT PANEL	LITHONIA	EPANL-1X4-3000LM-80-30-MIN10-ZT-120-E10W-CP							1	LED	35	UNV		1.0	4.0	0.3	5	3000LM 3000K 80CRI. PROVIDE BATTERY BACKUP.
KA	2X2 FLAT PANEL	LITHONIA	EPANL-2X2-3400LM-80-30-MIN10-ZT-120							1	LED	30	UNV		2.0	2.0	0.3	5	3400LM 3000K 80CRI
LT	LIGHTING TRACK	HALO COMMERCIAL	L653-P							1	LED	0	UNV	WHITE	0.0	12.0	0.0	8	
N4	4' STRIP	WILLIAMS	75-4-L38/830-A12125-DI-M-UNV	LITHONIA	ZL1N-L48-3000LM-FST-MVOLT-30K-80CRI					1	LED	41	UNV	ACRYLIC	0.3	4.0	0.2	5	3800LM 3000K 80CRI
N4E	4' STRIP	WILLIAMS	75-4-L38/830-A12125-DI-M-UNV	LITHONIA	ZL1N-L48-3000LM-FST-MVOLT-30K-80CRI					1	LED	41	UNV	ACRYLIC	0.3	4.0	0.2	5	3800LM 3000K 80CRI. PROVIDE BATTERY BACKUP.
P2	LED AREA LIGHT - TYPE II	MCGRAW-EDISON	GLEON-AF-02-LED-E1-T2-BK							1	LED	150	UNV	ALUMINUM, BLACK	0.0	0.0	0.0	7	11,951LM 3000K 70CRI
P4	LED AREA LIGHT - TYPE IV	MCGRAW-EDISON	GLEON-AF-02-LED-E1-T4FT-BK							1	LED	150	UNV	ALUMINUM, BLACK	0.0	0.0	0.0	7	12,252LM 3000K 70CRI
RB	BRIDGE LIGHTS	TLI	GRDW16-L12.0-TE350-120-277-BZ-30K-OEL							1	LED	12	UNV	TEXTURED BRONZE	1.1	1.3	0.8	5	1800LM 3000K
RBE	BRIDGE LIGHTS	TLI	GRDW16-L12.0-TE350-120-277-BZ-30K-OEL							1	LED	12	UNV	TEXTURED BRONZE	1.1	1.3	0.8	5	1800LM 3000K. PROVIDE BATTERY BACKUP.
S1	WALL DIRECTOR - TYPE IV	MCGRAW-EDISON	ISO-AF-1200-LED-EI-T4-FT-BZ-8030							1	LED	67	UNV	BRONZE	1.1	1.3	0.8	5	6600LM 3000K
T1	TRACK LIGHT	HALO COMMERCIAL	L-8-08-08-NF-90-30-P							1	LED	12	UNV	WHITE	0.0	0.0	0.0	5	850LM 3000K 90CRI
T2	TRACK LIGHT	HALO COMMERCIAL	L-8-08-25-FL-90-30-P							1	LED	35	UNV	WHITE	0.0	0.0	0.0	5	2500LM 3000K 90CRI
TP	TRACK PENDANT LIGHT	HALO COMMERCIAL	L1-LPM9-30-AH-P							1	LED	10	UNV	WHITE	0.0	0.0	0.0	5	560LM 3000K
V1	VANITY LIGHT	BARN LIGHT	BLE-G-2WHS-G55-WHS-12-975-12-980-E26							1	LED	200	UNV	VERIFY COLOR WITH ARCHITECT				5	3000LM 3000K
XA	1 FACE/EM EXIT	DUAL LITE	SES RBNE	LITHONIA	LE-S-1-R-ELN					1	LED	5	UNV	CAST ALUMINUM	0.0	0.0	0.0	6	RED W/BATTERY
XB	1 FACE/EM EXIT	DUAL LITE	DPIL-P-50-S-R							1	LED	5	UNV	ABS,THERMOPLASTIC	0.0	0.0	0.0	6	RED W/PHOTOLUMINESCENT

LIGHTING FIXTURE SCHEDULE NOTES

- GENERAL CONTRACTOR SHALL PROVIDE FIREPROOFING AROUND RECESSED FIXTURES INSTALLED IN FIRE RATED CEILING PER U.L. REQUIREMENTS. ELECTRICAL CONTRACTOR WILL COORDINATE.
- MANUFACTURERS LISTED IN THIS SCHEDULE OR APPROVED BY WRITTEN ADDENDUM WILL BE THE ONLY APPROVED MANUFACTURERS TO BID THE LIGHTING FIXTURES FOR THIS PROJECT. CONTRACTORS AND SUPPLIERS USING PRICING FROM MANUFACTURERS NOT LISTED ON SCHEDULE OR BY ADDENDUM DO SO AT THEIR OWN RISK.
- LIGHT FIXTURE SELECTIONS ARE BASED ON THE MANUFACTURER IN THE LEFT MOST COLUMN AS LISTED IN THE SCHEDULE. FIXTURES APPROVED AS EQUALS IN THIS SCHEDULE OR BY ADDENDUM SHALL BE EQUAL TO THE UNIT SPECIFIED IN THE LEFT MOST COLUMN, IE: SPRING LOADED LATCHES, POST PAINTED FINISH, AND PHOTOMETRICS.
- ALL LIGHT FIXTURES SHALL BE SECURED TO THE CEILING FRAMING SYSTEM BY MECHANICAL MEANS (SUCH AS BOLTS, SCREWS, OR RIVETS) OR BY CLIPS IDENTIFIED FOR USE WITH THE TYPE OF CEILING FRAMING MEMBER AND LIGHT FIXTURE.
- LIGHT FIXTURES SHALL BE PROVIDED WITH 0-10V DIMMING DRIVERS. DRIVERS SHALL BE CAPABLE OF DIMMING TO A MINIMUM OF 10% OF TOTAL LIGHT OUTPUT. LED DRIVERS SHALL HAVE A DISCONNECTING MEANS MEETING THE REQUIREMENTS OF NEC SECTION 410.130(G), EXCEPT FOR THOSE INSTALLED IN CORD-AND-PLUG CONNECTED FIXTURES. WHERE APPLICABLE, WHEN DIMMING SWITCHES ARE NOT PROVIDED AS PART OF THE DESIGN, CONTRACTOR SHALL CAP OFF 0-10V DIMMING WIRES FOR FUTURE EXTENSION BY OWNER.
- PROVIDE ARROWS AND FACES AS INDICATED ON THE DRAWINGS.
- 30FT ROUND TAPERED STEEL POLE W/HANDHOLE AND BOLT COVERS. POLE TO MEET FIXTURE EPA REQUIREMENTS FOR THIS REGION WITH 1.3 GUST FACTOR.
- FURNISH TRACK LENGTHS AS INDICATED ON PLAN. FURNISH WITH LIVE END CONNECTORS, JOINTER CONNECTORS, AND ALL ACCESSORIES REQUIRED FOR A COMPLETE WORKING INSTALLATION.

4/1/2020 8:06:49 AM
 BIM 360://198014-003 - Watson Park Events Center New
 Building/198014-003-MASTER ELEC-R18.rvt

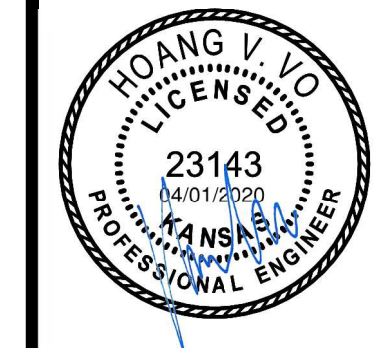
IPEC
 PROFESSIONAL ENGINEERING CONSULTANTS P.A.
 303 SOUTH TOPEKA WICHITA, KS 67202
 316-267-2891 www.pec1.com

CITY REV Δ 13 MAR 20
 FINAL 13 FEB 20

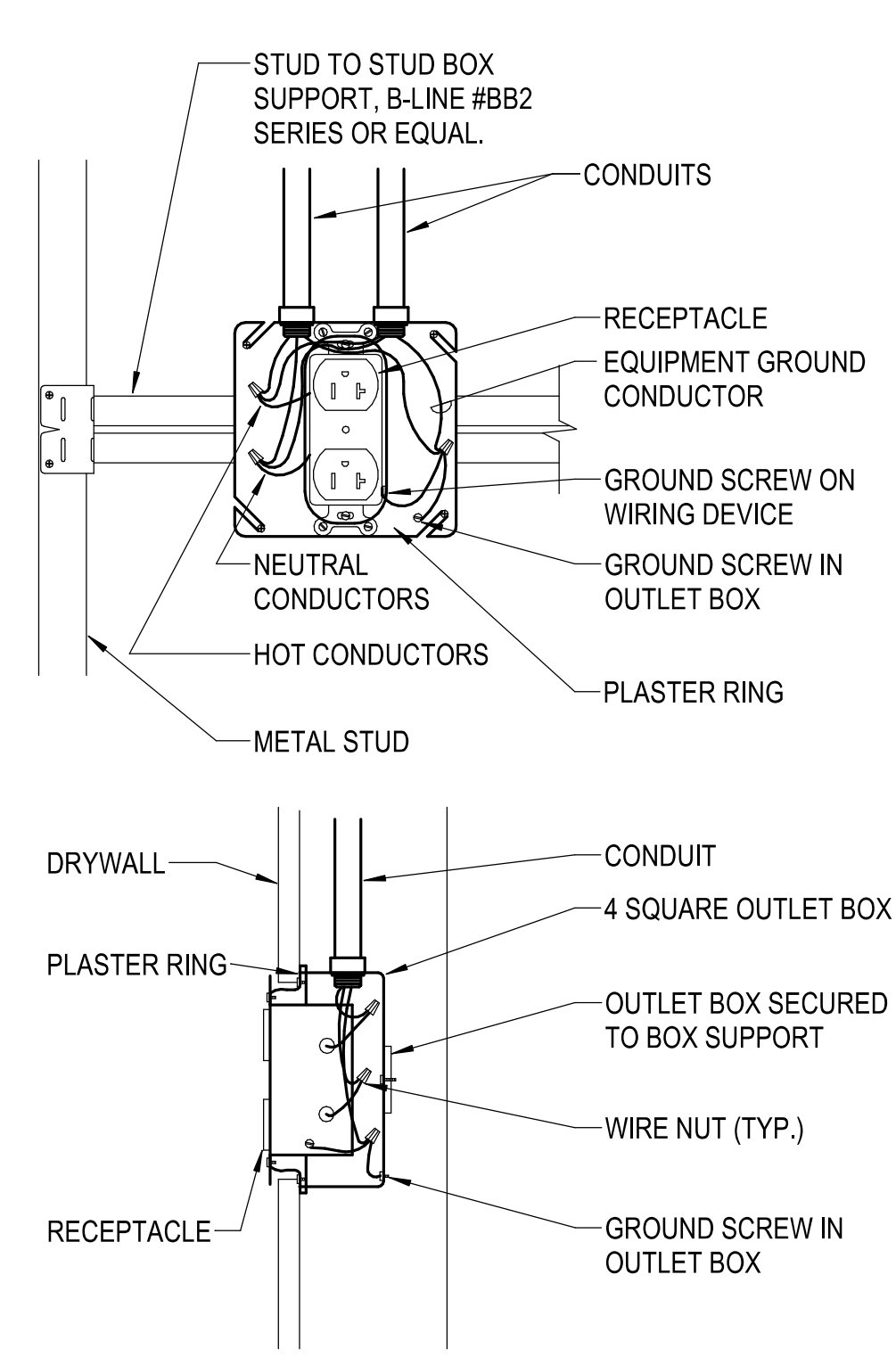
LIGHT FIXTURE SCHEDULE

E0.3

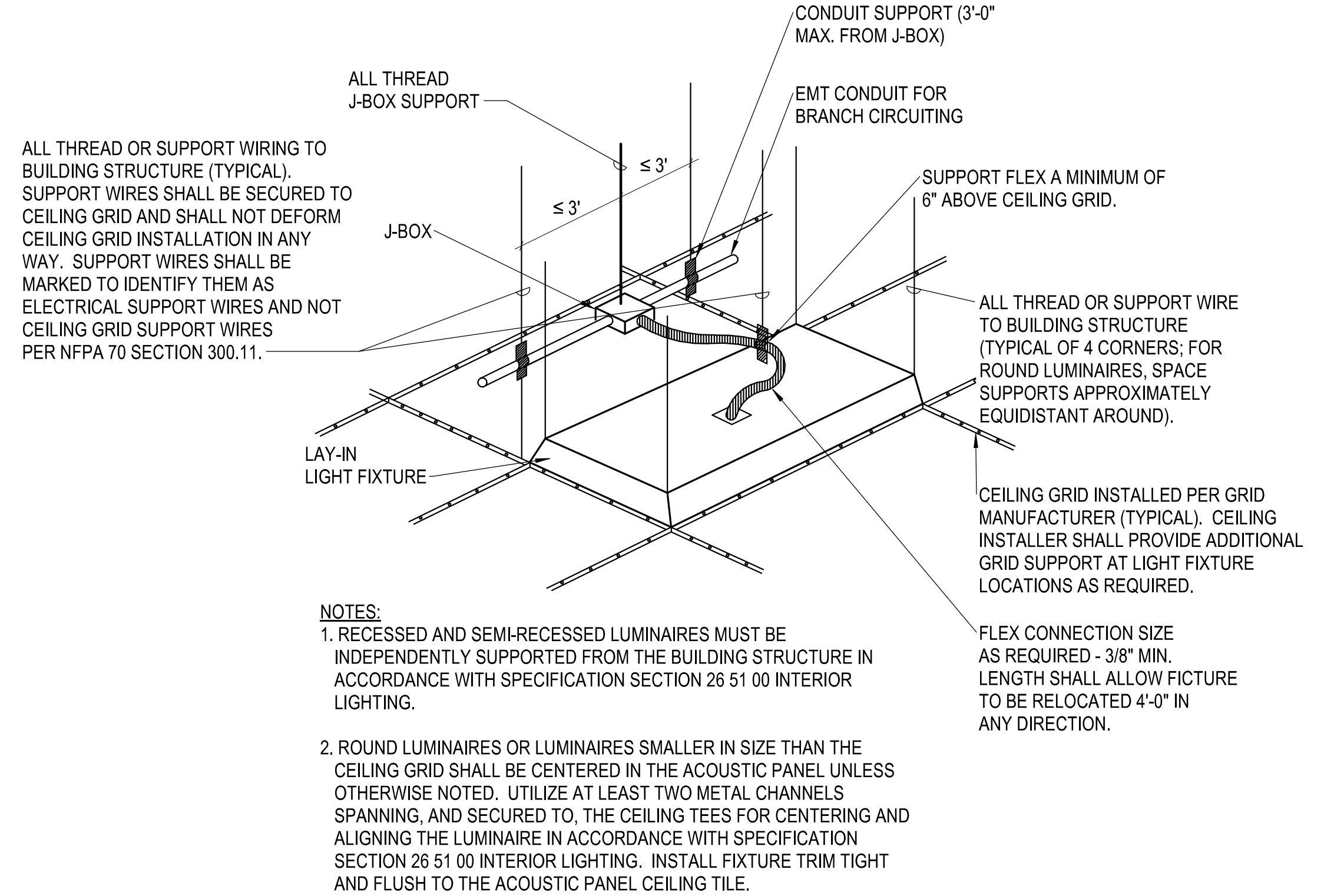
SPANGENBERG PHILLIPS TICE
ARCHITECTURE
 121 N Mead Ste 201 Wichita KS 67202
 T 316.267.4002 F 316.267.1509
 www.sptarchitecture.com



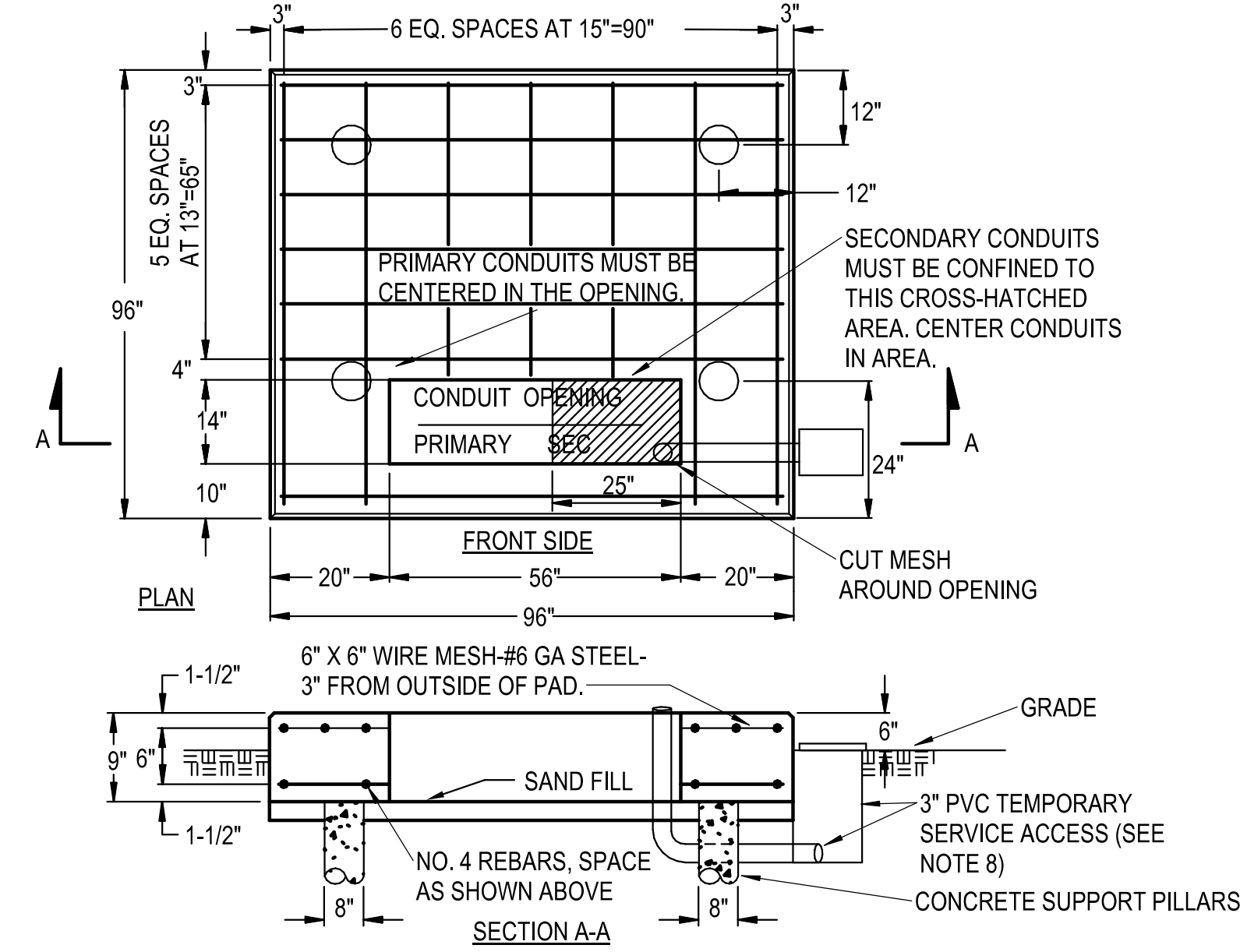
WATSON PARK
EVENT CENTER
 3022 S MCLEAN BLVD, WICHITA, KS 67217



1 RECEPTACLE MOUNTING DETAIL
NO SCALE



2 LIGHTING MOUNTING DETAIL
NO SCALE

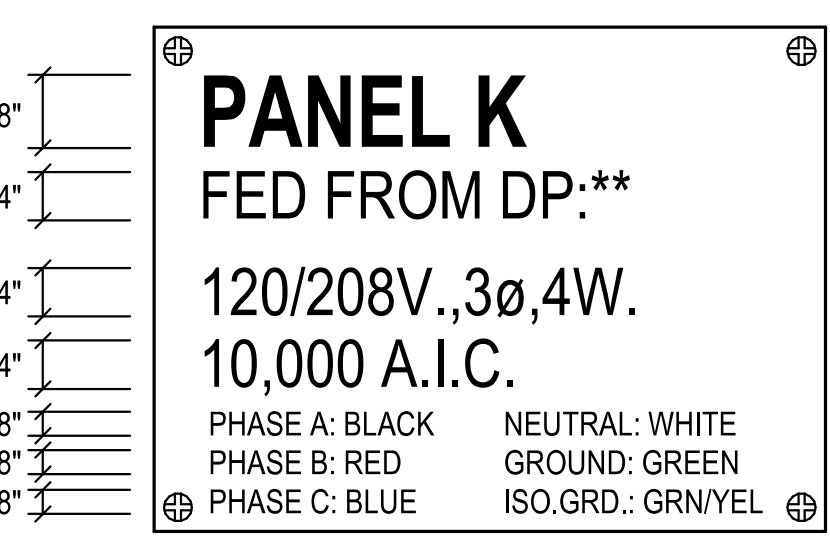
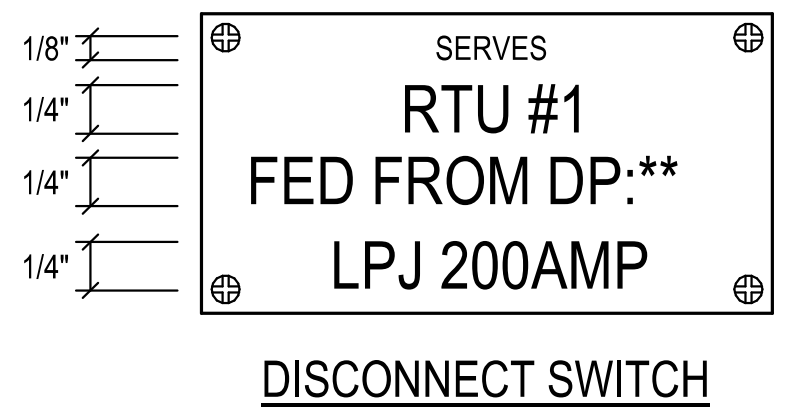


- NOTES:**
1. VERIFY PAD LOCATION, DIMENSIONS & ALL REQUIREMENTS WITH LOCAL UTILITY CO.
 2. THE TOP OF THE TRANSFORMER PAD SHALL RECEIVE A SMOOTH TROWEL FINISH. THE CORNERS AND EDGES SHALL BE ROUNDED OR BEVELLED.
 3. THE CONCRETE SHALL BE A MINIMUM OF 3,000 LB. MIX.
 4. CONTRACTOR SHALL EXTEND FORMS DOWN TO AT LEAST 3\"/>
5. TOP OF CONDUITS SHALL BE FLUSH WITH TOP OF PAD.
 6. THE CONDUIT OPENING SHALL BE FREE AND CLEAR OF CONCRETE.
 7. PILLARS ARE FORMED BY AUGERING AN 8\"/>

3 TRANSFORMER PAD DETAIL
NO SCALE 750-1000 KVA

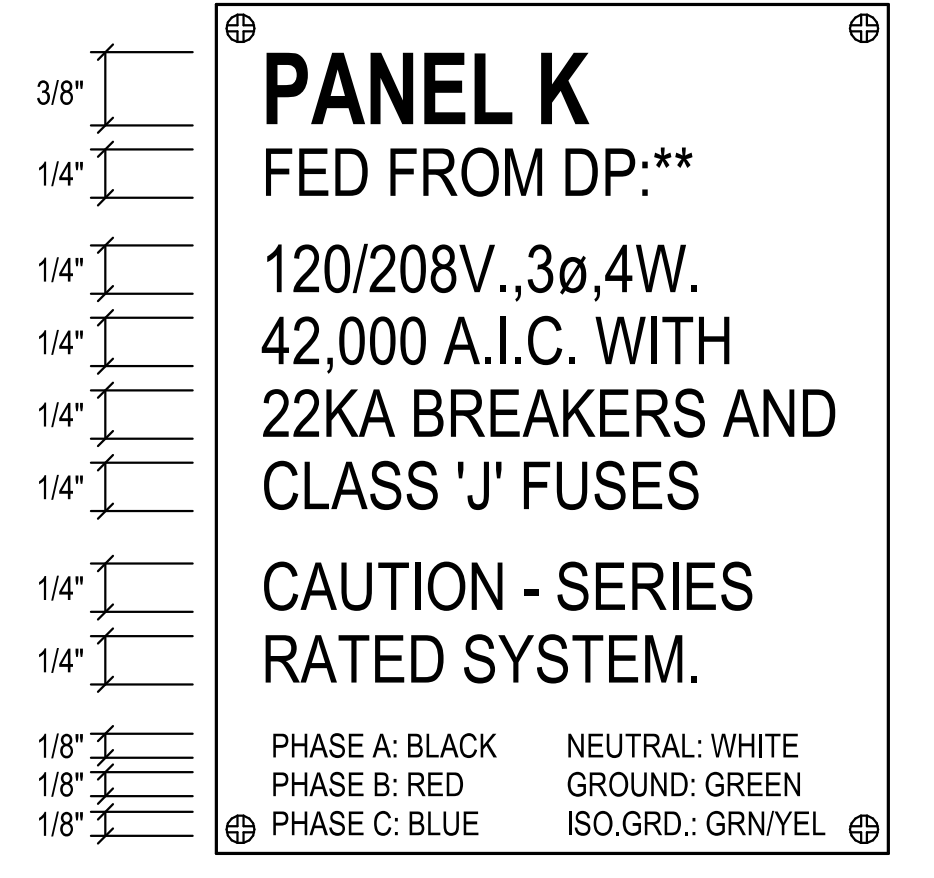


SWITCHBOARD/DISTRIBUTION PANEL/MOTOR CONTROL CENTER SWITCH



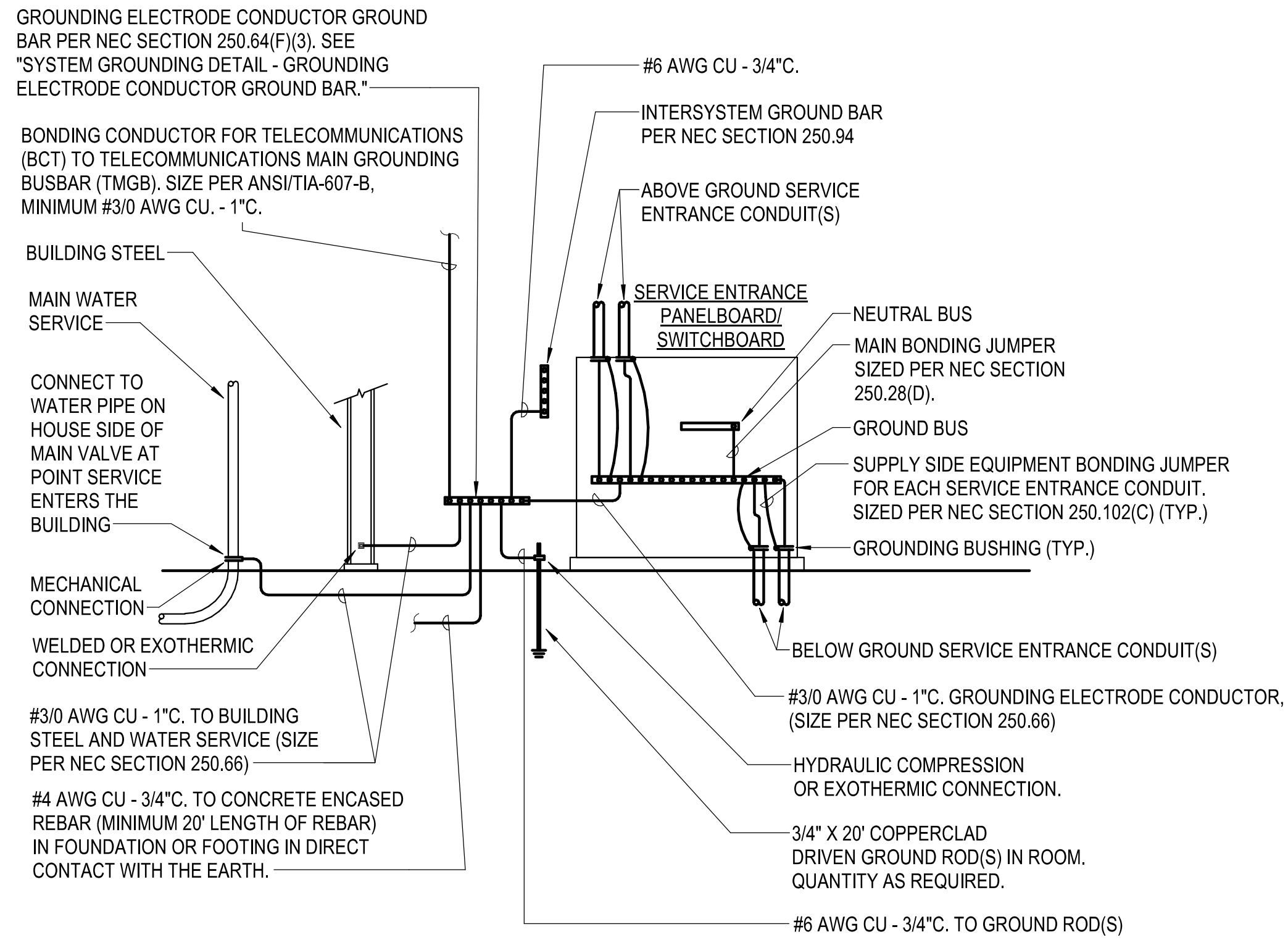
BRANCH CIRCUIT/DISTRIBUTION PANEL

4 NAMEPLATE DETAIL
NO SCALE



BRANCH CIRCUIT/DISTRIBUTION PANEL SERIES RATED

2/13/2020 2:29:59 PM
BIM 360://198014-003 - Watson Park Events Center New Building/198014-003-MASTER ELEC-R18.rvt

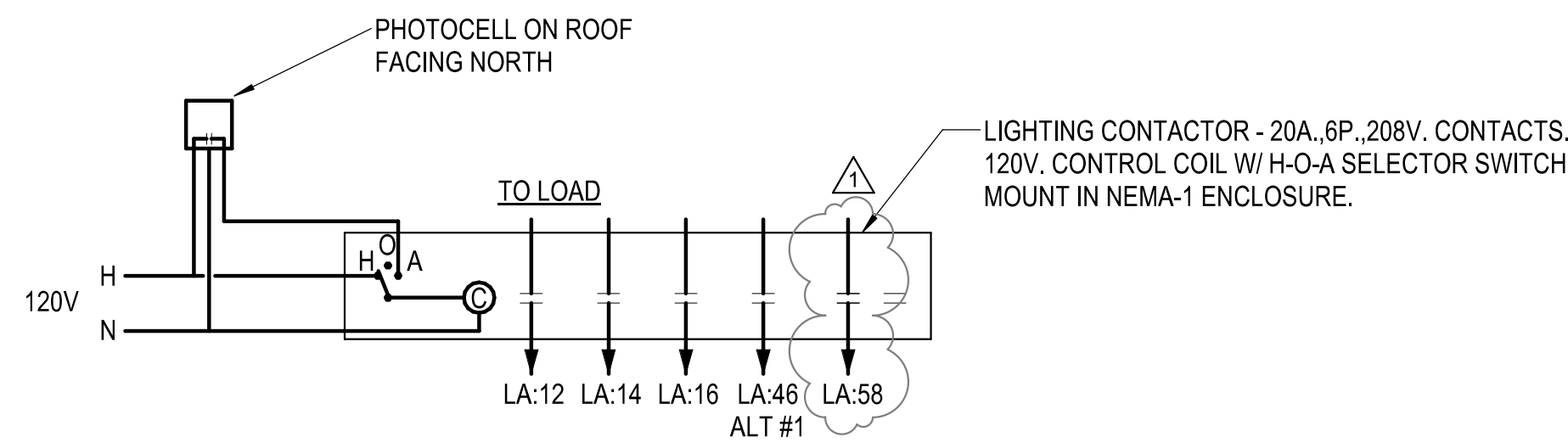


NOTES:

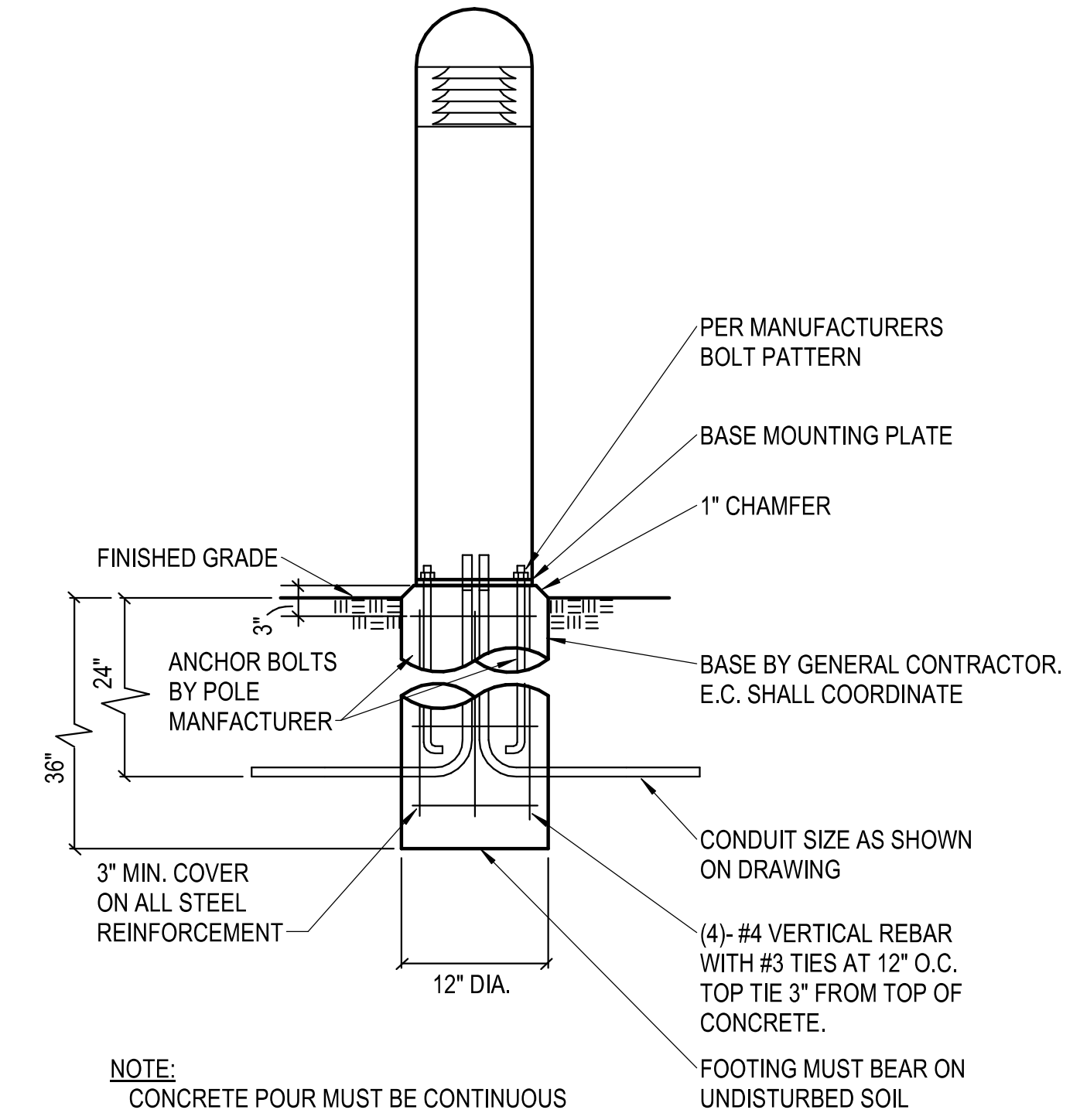
1. PROVIDE OTHER GROUNDING CONNECTIONS AS SPECIFIED IN NEC SECTION 250.50.
2. LABEL EACH GROUNDING ELECTRODE CONDUCTOR AND BONDING JUMPER.
3. WHERE CONDUCTORS ARE ROUTED IN FERROUS CONDUIT, BOND BOTH ENDS OF THE CONDUIT TO THE CONDUCTOR.

DESIGNER NOTE: SIZE GROUNDING ELECTRODE CONDUCTORS AND BONDING JUMPERS TO BUILDING STEEL AND WATER SERVICE PER NEC SECTION 250.66

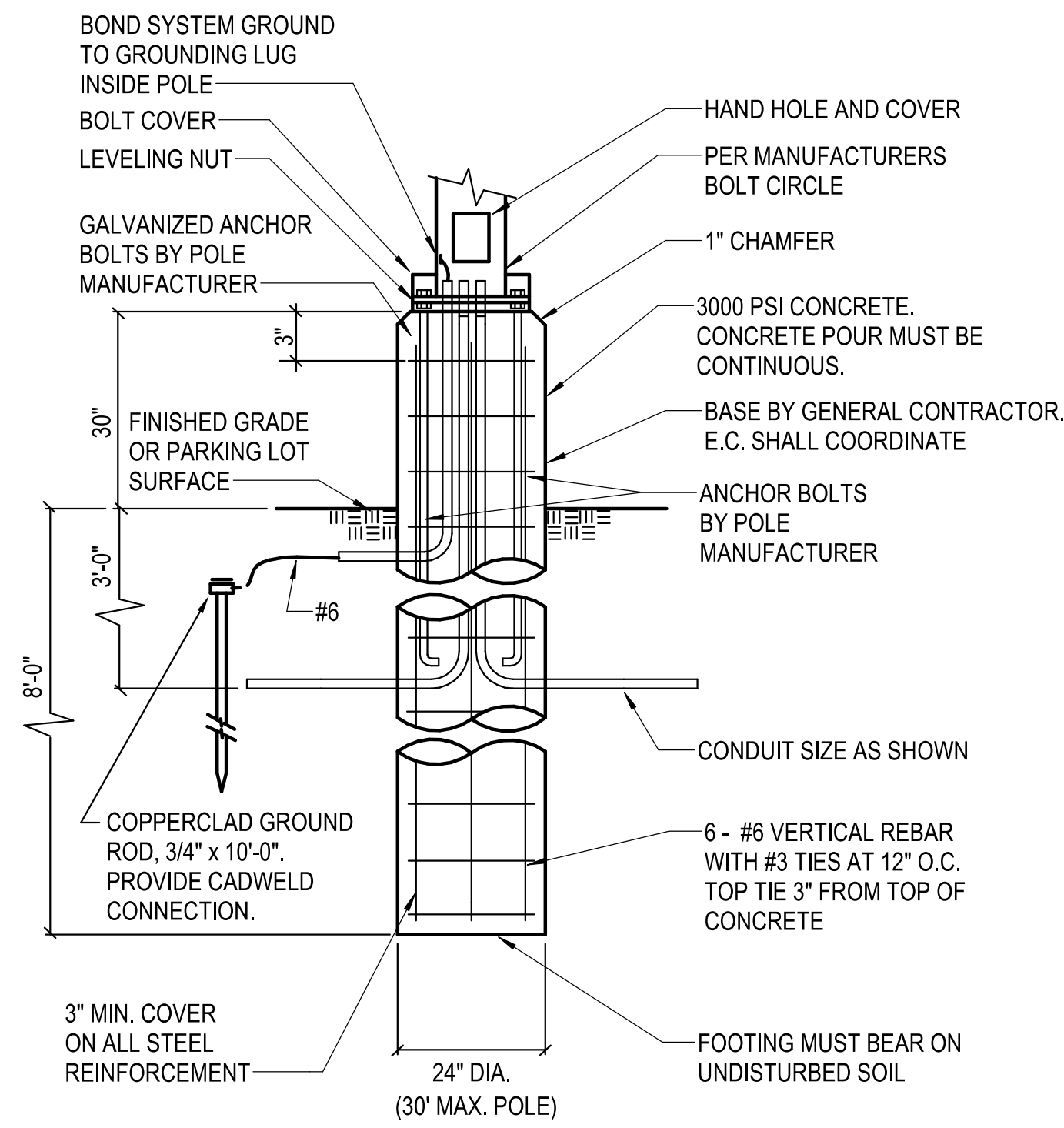
1 SYSTEM GROUNDING DETAIL
NO SCALE



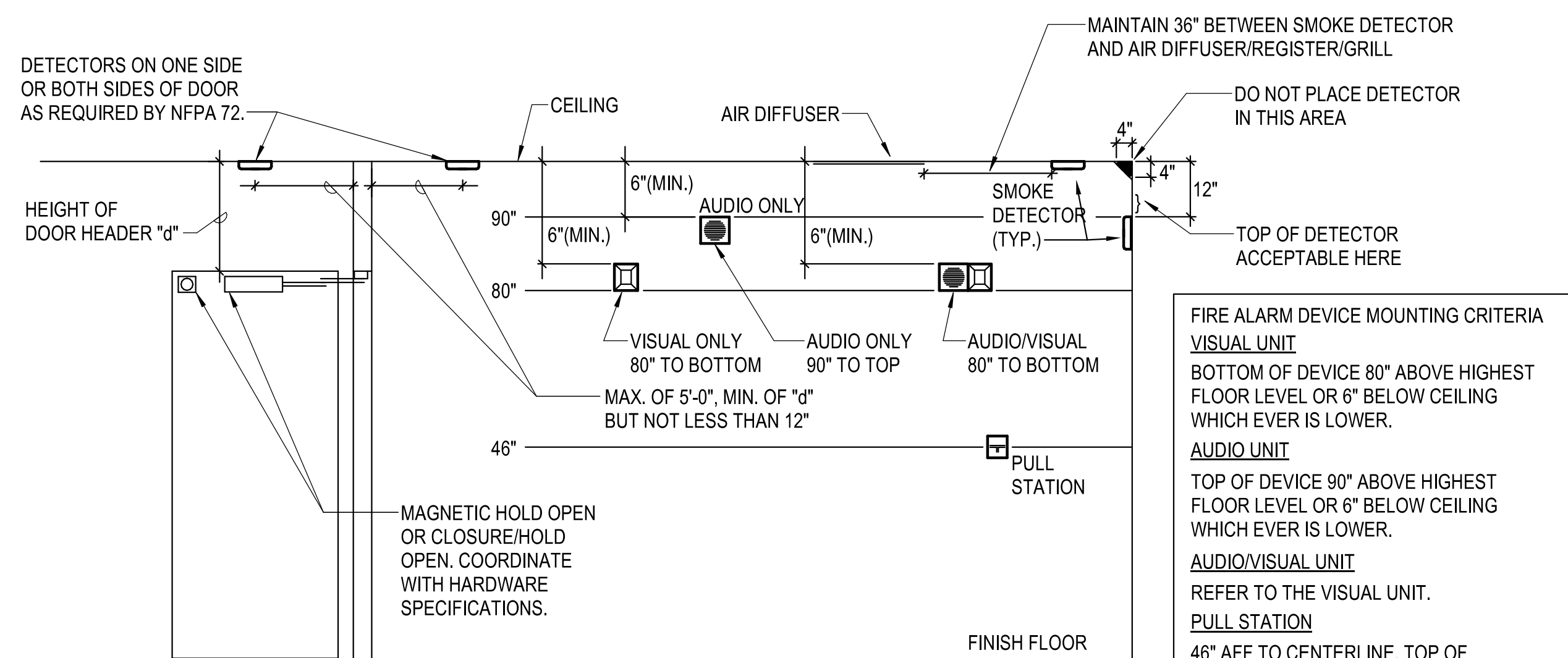
2 CONTACTOR 'A'
NO SCALE



3 PIPE BOLLARD DETAIL
NO SCALE



4 POLE BASE DETAIL
NO SCALE



5 F.A. MOUNTING DETAIL
NO SCALE

FIRE ALARM DEVICE MOUNTING CRITERIA

VISUAL UNIT
BOTTOM OF DEVICE 80" ABOVE HIGHEST FLOOR LEVEL OR 6" BELOW CEILING WHICH EVER IS LOWER.

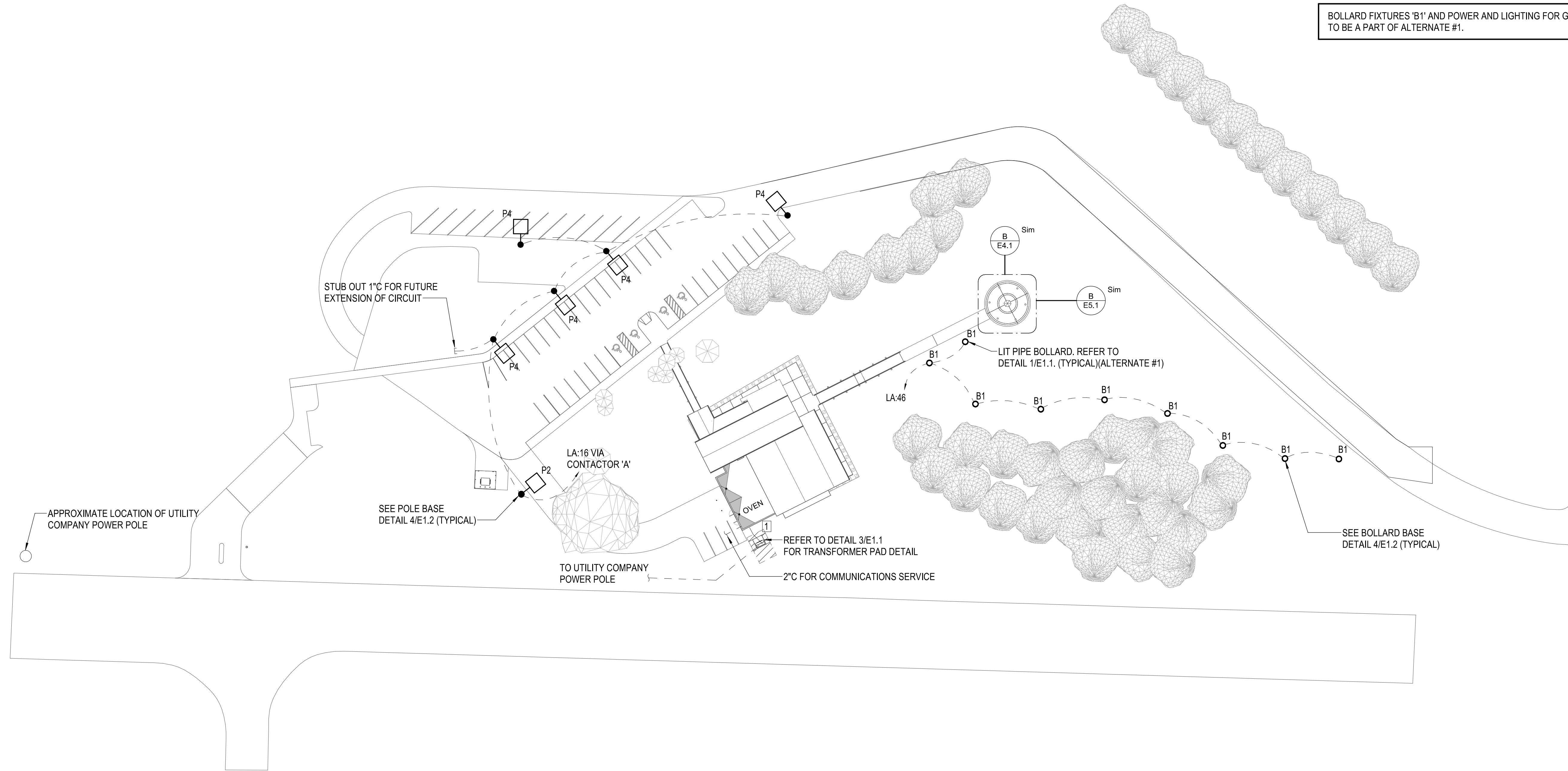
AUDIO UNIT
TOP OF DEVICE 90" ABOVE HIGHEST FLOOR LEVEL OR 6" BELOW CEILING WHICH EVER IS LOWER.

AUDIO/VISUAL UNIT
REFER TO THE VISUAL UNIT.

PULL STATION
46" AFF TO CENTERLINE, TOP OF DEVICE SHALL NOT BE MORE THAN 48" AFF

GENERAL NOTE
THESE GUIDELINES SHALL BE USED UNLESS MOUNTING HEIGHTS HAVE BEEN SPECIFIED OTHERWISE ON THE DRAWINGS.

2/13/2020 2:30:01 PM
 BIM 360://198014-003 - Watson Park Events Center New
 Building/198014-003-MASTER ELEC-R18.rvt



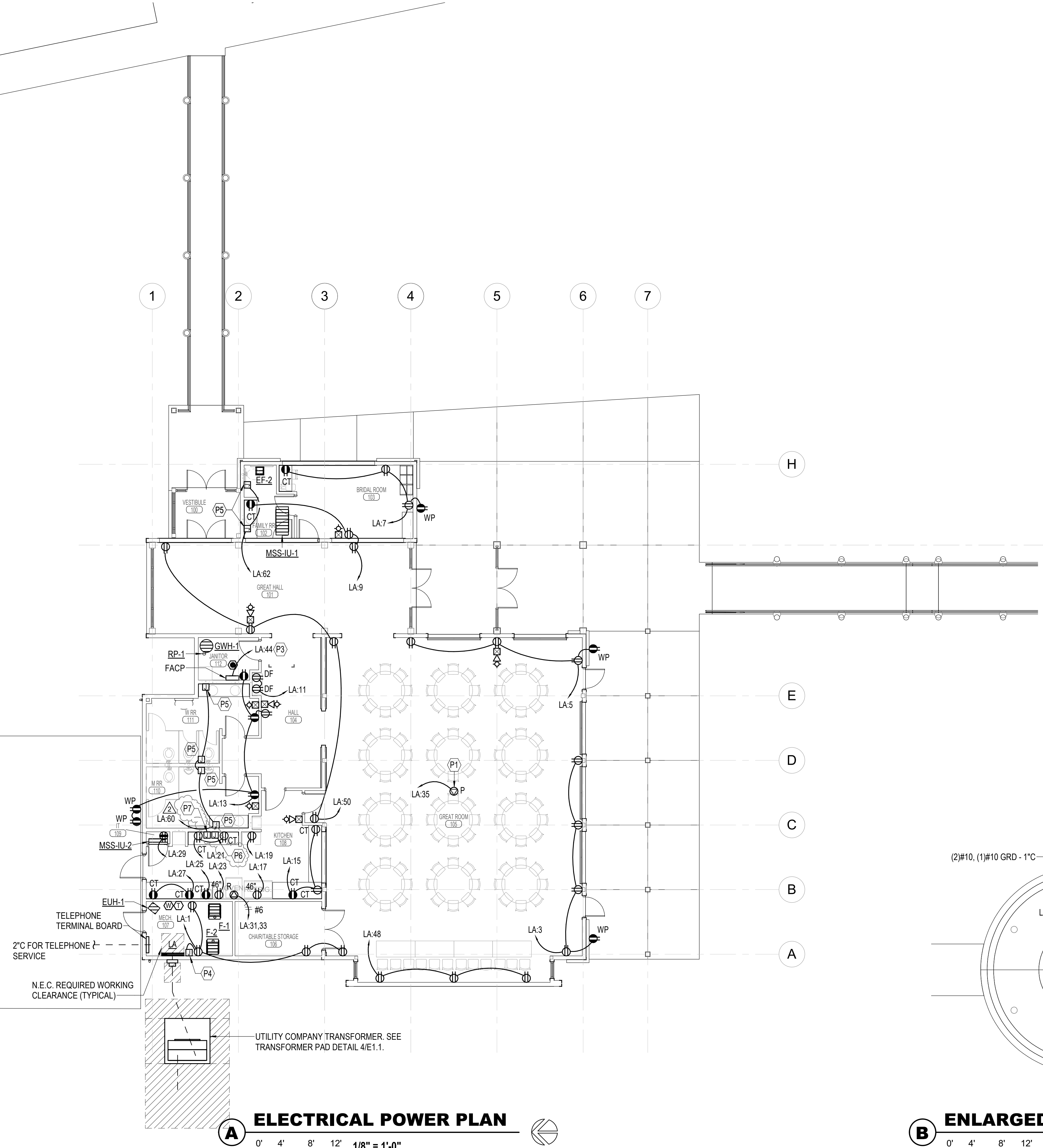
- SITE PLAN NOTES:**
1. UNLESS OTHERWISE NOTED, ALL CONDUIT ROUTED ON SITE SHALL BE 1" MINIMUM.
 2. ALL RISERS SHALL BE PVC COATED RIGID GALVANIZED STEEL (RGS) ALL ELLS BELOW GRADE SHALL BE PVC COATED RIGID GALVANIZED STEEL (RGS), PROVIDE WITH PVC TO STEEL ADAPTER(S) AS NECESSARY. (THIS REQUIREMENT SHALL NOT APPLY TO FIXTURE POLE BASES).
 3. ALL ELECTRICAL WORK AND FEES ASSOCIATED WITH UTILITIES SHALL BE VERIFIED AND COORDINATED WITH LOCAL SERVICE PROVIDER PRIOR TO BID.
 4. CONTRACTOR SHALL REFERENCE ALL RELATED CONTRACT DOCUMENTS, SITE SURVEY, AND OTHER RESOURCES FOR POSSIBLE CONFLICTS WITH OTHER UNDERGROUND UTILITIES. AT UTILITY CROSSINGS, CONTRACTOR SHALL VERIFY UTILITY DEPTHS AND COORDINATE CONDUIT ROUTING AS NECESSARY.
 5. CONTRACTOR SHALL VERIFY AND COORDINATE EXISTING CONDITIONS OF PROJECT SITE PRIOR TO BID.

BOLLARD FIXTURES 'B1' AND POWER AND LIGHTING FOR GAZEBO TO BE A PART OF ALTERNATE #1.

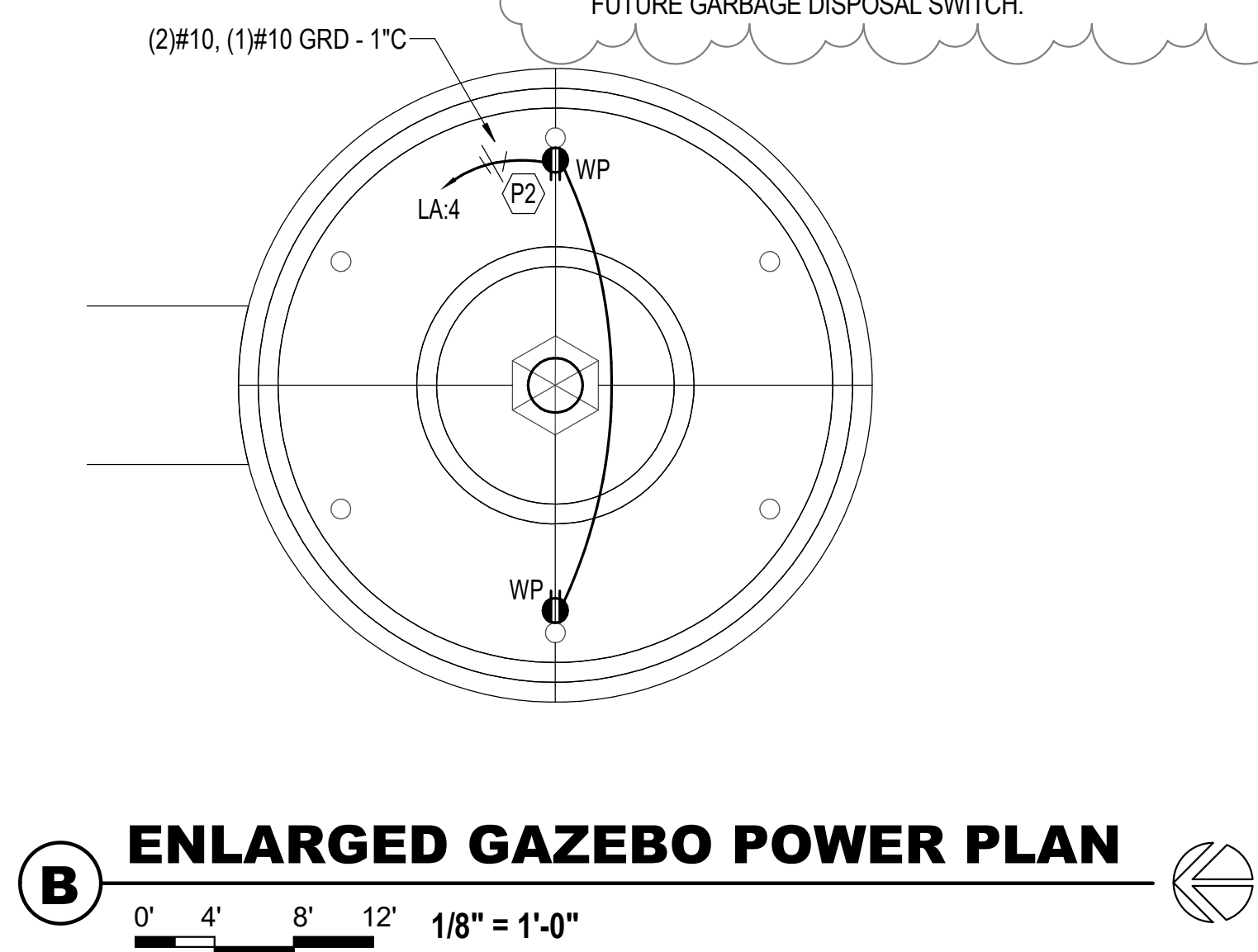
A ELECTRICAL SITE PLAN
 0' 20' 40' 60' 1" = 40'-0"



4/6/2020 2:33:33 PM
 BIM 360://198014-003 - Watson Park Events Center New
 Building/198014-003-MASTER ELEC-R18.rvt



A ELECTRICAL POWER PLAN
 0' 4' 8' 12' 1/8" = 1'-0"



B ENLARGED GAZEBO POWER PLAN
 0' 4' 8' 12' 1/8" = 1'-0"

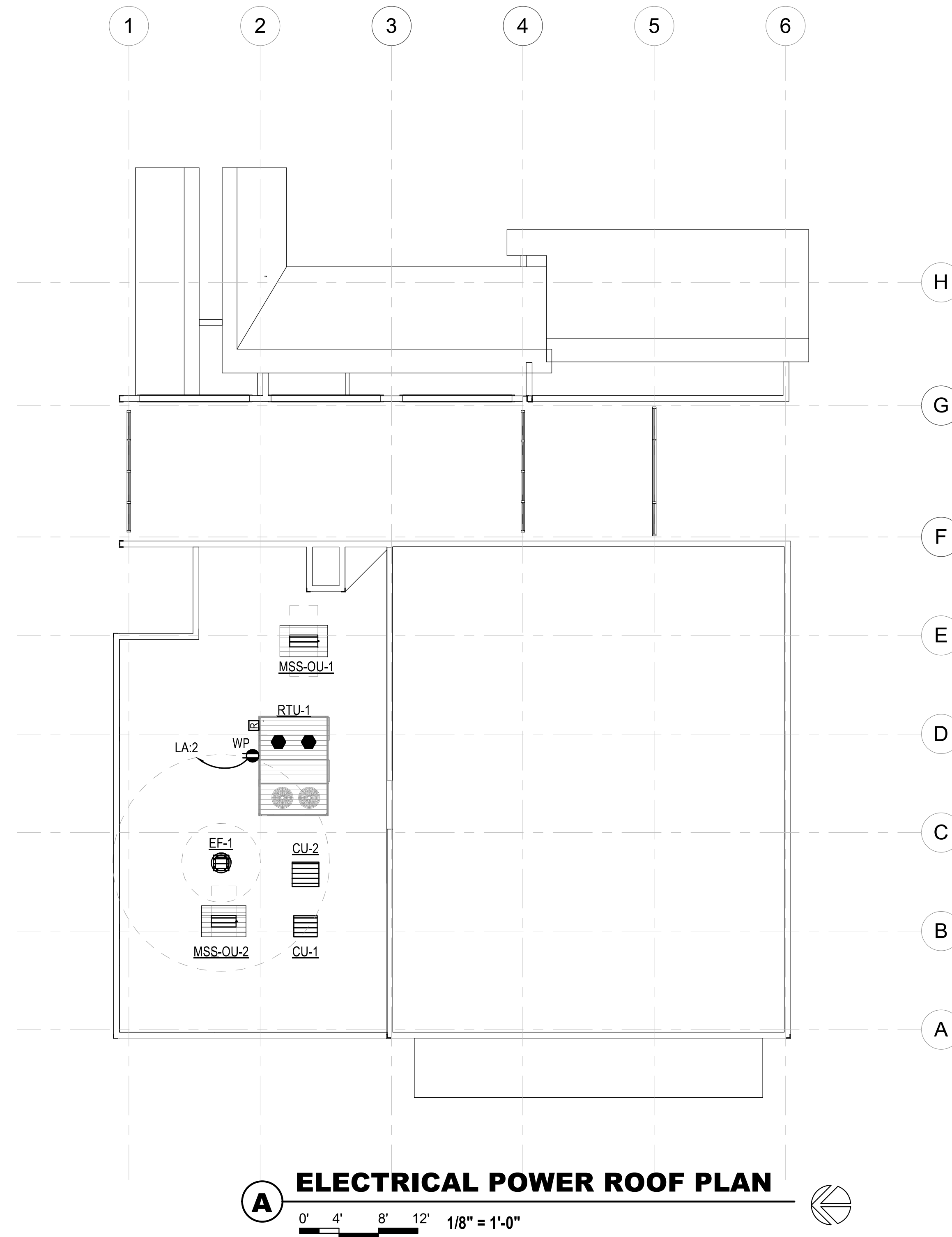
POWER PLAN NOTES:

1. BRANCH CIRCUITS ARE INDICATED AS ONE CIRCUIT HOME RUNS WITH INDIVIDUAL NEUTRALS. A MAXIMUM OF THREE CIRCUITS (MAXIMUM OF THREE PHASE CONDUCTORS) MAY BE GROUPED IN A SINGLE CONDUIT. WHERE MULTIPLE CIRCUITS ARE LOCATED IN THE SAME RACEWAY, JUNCTION BOX OR ENCLOSURE, NEUTRALS SHALL BE MARKED OR LABELED TO INDICATE WHICH CIRCUIT THEY ARE ASSOCIATED WITH. SEE SPECIFICATION SECTION "LOW VOLTAGE ELECTRICAL POWER CONDUCTORS AND CABLES" FOR ADDITIONAL INFORMATION.
2. A GROUND CONDUCTOR SIZED PER N.E.C. ARTICLE 250 IS REQUIRED IN ALL CONDUITS.
3. FOR CONNECTION REQUIREMENTS TO MECHANICAL UNITS, SEE MECHANICAL EQUIPMENT CONNECTION SCHEDULE.
4. ALL PENETRATIONS IN THE RATED WALLS AND CEILINGS SHALL BE SEALED WITH A MATERIAL CAPABLE OF PREVENTING THE PASSAGE OF FLAMES AND HOT GASSES. THE SEALANT SHALL HAVE A T-RATING OF ONE HOUR.
5. ALL PIPING, CONDUIT, AND OUTLET BOXES (ELECTRIC, TELEPHONE, COMPUTER, ETC.) IN THE RATED WALLS OR CEILING SHALL BE CONSTRUCTED OF NON-COMBUSTIBLE MATERIAL.
6. OUTLET BOXES (ELECTRIC, TELEPHONE, COMPUTER, ETC.) SHALL BE LIMITED TO TWO OUTLET BOXES PER STUD SPACE. OUTLET BOXES ON OPPOSITE SIDES OF THE RATED WALLS SHALL BE SEPARATED BY A HORIZONTAL DISTANCE OF 24 INCHES.

KEYED NOTES:

- P1 VERIFY EXACT LOCATION OF PROJECTOR WITH I.T. PRIOR TO ROUGH-IN.
- P2 ROUTE WIRING BACK TO PANEL 'LA' THROUGH EXISTING (2)3/4" CONDUIT STUBBED UP AT COLUMN.
- P3 PROVIDE (2)TELEPHONE LINES FOR FIRE ALARM CONTROL COMMUNICATION.
- P4 POWER CONNECTION FOR MOTORIZED DAMPER TO BE INTERLOCKED WITH FURNACE FANS. MOTORIZED DAMPER TO BE OPEN WHEN FURNACE FAN IS ON.
- P5 JUNCTION BOX MOUNTED ABOVE NEAREST ACCESSIBLE CEILING FOR CONNECTION TO LAVATORY/FLUSH VALVE SENSORS. COORDINATE LOCATION WITH PLUMBING CONTRACTOR. CONTRACTOR TO PROVIDE ALL LINE-LOW VOLTAGE WIRING, 1/2" CONDUIT DOWN WALL TO SENSOR LOCATIONS, AND CONNECTIONS TO PROVIDE A COMPLETE AND WORKING SYSTEM.
- P6 ROUTE EMPTY 3/4" CONDUIT WITH PULLROPE FROM ACCESSIBLE CEILING DOWN TO JUNCTION BOX WITH BLANK COVERPLATE AT 16" AFF FOR CONNECTION OF FUTURE GARBAGE DISPOSAL.
- P7 ROUTE EMPTY 3/4" CONDUIT WITH PULLROPE FROM ACCESSIBLE CEILING DOWN TO JUNCTION BOX WITH BLANK VINYL COVERPLATE AT 40" AFF FOR FUTURE GARBAGE DISPOSAL SWITCH.





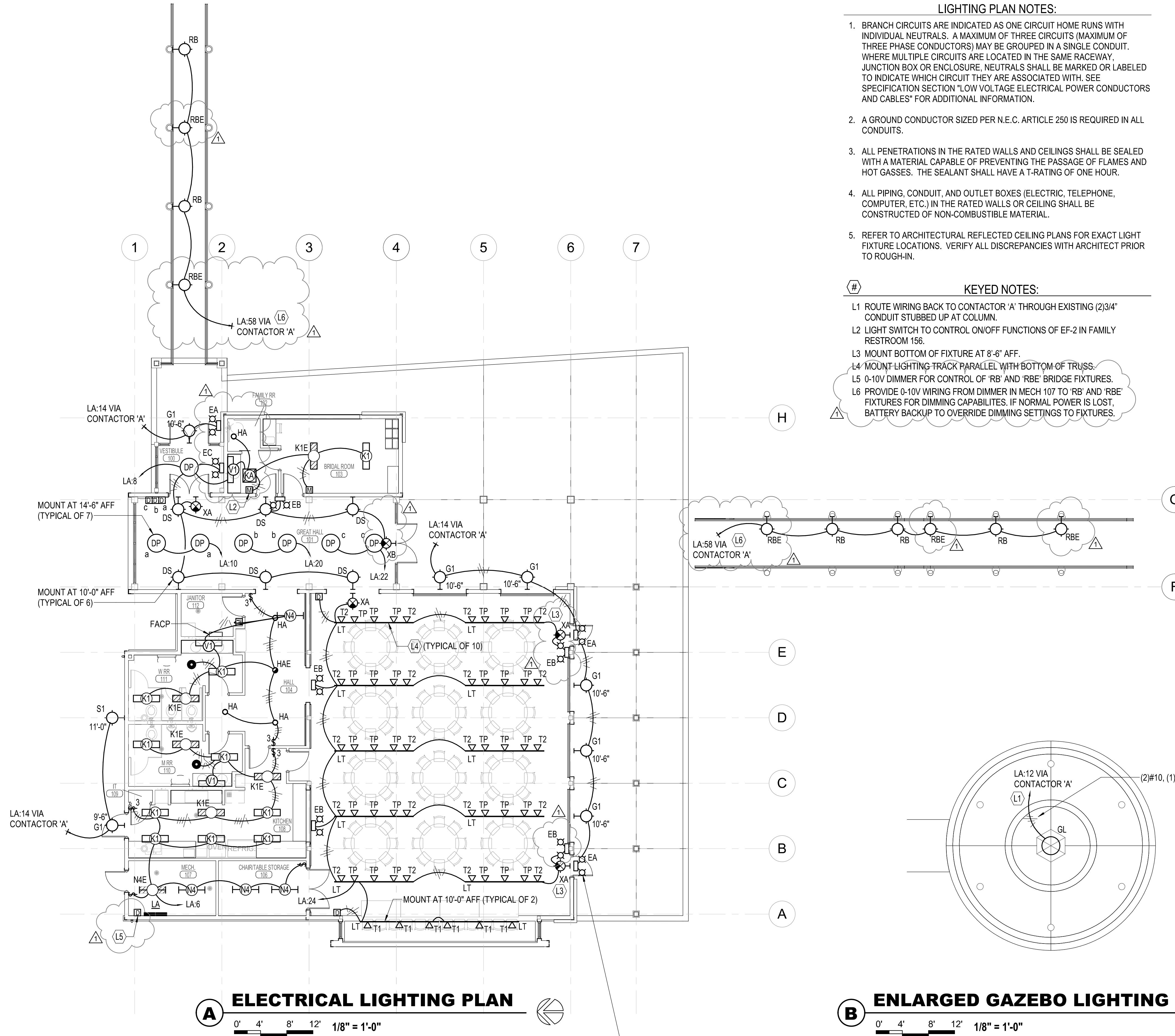
ELECTRICAL POWER ROOF PLAN

0' 4' 8' 12' 1/8" = 1'-0"

POWER PLAN NOTES:

- BRANCH CIRCUITS ARE INDICATED AS ONE CIRCUIT HOME RUNS WITH INDIVIDUAL NEUTRALS. A MAXIMUM OF THREE CIRCUITS (MAXIMUM OF THREE PHASE CONDUCTORS) MAY BE GROUPED IN A SINGLE CONDUIT. WHERE MULTIPLE CIRCUITS ARE LOCATED IN THE SAME RACEWAY, JUNCTION BOX OR ENCLOSURE, NEUTRALS SHALL BE MARKED OR LABELED TO INDICATE WHICH CIRCUIT THEY ARE ASSOCIATED WITH. SEE SPECIFICATION SECTION "LOW VOLTAGE ELECTRICAL POWER CONDUCTORS AND CABLES" FOR ADDITIONAL INFORMATION.
- A GROUND CONDUCTOR SIZED PER N.E.C. ARTICLE 250 IS REQUIRED IN ALL CONDUITS.
- FOR CONNECTION REQUIREMENTS TO MECHANICAL UNITS, SEE MECHANICAL EQUIPMENT CONNECTION SCHEDULE.
- ALL PENETRATIONS IN THE RATED WALLS AND CEILINGS SHALL BE SEALED WITH A MATERIAL CAPABLE OF PREVENTING THE PASSAGE OF FLAMES AND HOT GASSES. THE SEALANT SHALL HAVE A T-RATING OF ONE HOUR.
- ALL PIPING, CONDUIT, AND OUTLET BOXES (ELECTRIC, TELEPHONE, COMPUTER, ETC.) IN THE RATED WALLS OR CEILING SHALL BE CONSTRUCTED OF NON-COMBUSTIBLE MATERIAL.
- OUTLET BOXES (ELECTRIC, TELEPHONE, COMPUTER, ETC.) SHALL BE LIMITED TO TWO OUTLET BOXES PER STUD SPACE. OUTLET BOXES ON OPPOSITE SIDES OF THE RATED WALLS SHALL BE SEPARATED BY A HORIZONTAL DISTANCE OF 24 INCHES.





- LIGHTING PLAN NOTES:**
1. BRANCH CIRCUITS ARE INDICATED AS ONE CIRCUIT HOME RUNS WITH INDIVIDUAL NEUTRALS. A MAXIMUM OF THREE CIRCUITS (MAXIMUM OF THREE PHASE CONDUCTORS) MAY BE GROUPED IN A SINGLE CONDUIT. WHERE MULTIPLE CIRCUITS ARE LOCATED IN THE SAME RACEWAY, JUNCTION BOX OR ENCLOSURE, NEUTRALS SHALL BE MARKED OR LABELED TO INDICATE WHICH CIRCUIT THEY ARE ASSOCIATED WITH. SEE SPECIFICATION SECTION "LOW VOLTAGE ELECTRICAL POWER CONDUCTORS AND CABLES" FOR ADDITIONAL INFORMATION.
 2. A GROUND CONDUCTOR SIZED PER N.E.C. ARTICLE 250 IS REQUIRED IN ALL CONDUITS.
 3. ALL PENETRATIONS IN THE RATED WALLS AND CEILINGS SHALL BE SEALED WITH A MATERIAL CAPABLE OF PREVENTING THE PASSAGE OF FLAMES AND HOT GASSES. THE SEALANT SHALL HAVE A T-RATING OF ONE HOUR.
 4. ALL PIPING, CONDUIT, AND OUTLET BOXES (ELECTRIC, TELEPHONE, COMPUTER, ETC.) IN THE RATED WALLS OR CEILING SHALL BE CONSTRUCTED OF NON-COMBUSTIBLE MATERIAL.
 5. REFER TO ARCHITECTURAL REFLECTED CEILING PLANS FOR EXACT LIGHT FIXTURE LOCATIONS. VERIFY ALL DISCREPANCIES WITH ARCHITECT PRIOR TO ROUGH-IN.

- KEYED NOTES:**
- L1 ROUTE WIRING BACK TO CONTACTOR 'A' THROUGH EXISTING (2)3/4" CONDUIT STUBBED UP AT COLUMN.
 - L2 LIGHT SWITCH TO CONTROL ON/OFF FUNCTIONS OF EF-2 IN FAMILY RESTROOM 156.
 - L3 MOUNT BOTTOM OF FIXTURE AT 8'-6" AFF.
 - L4 MOUNT LIGHTING TRACK PARALLEL WITH BOTTOM OF TRUSS.
 - L5 0-10V DIMMER FOR CONTROL OF 'RB' AND 'RBE' BRIDGE FIXTURES.
 - L6 PROVIDE 0-10V WIRING FROM DIMMER IN MECH 107 TO 'RB' AND 'RBE' FIXTURES FOR DIMMING CAPABILITIES. IF NORMAL POWER IS LOST, BATTERY BACKUP TO OVERRIDE DIMMING SETTINGS TO FIXTURES.

