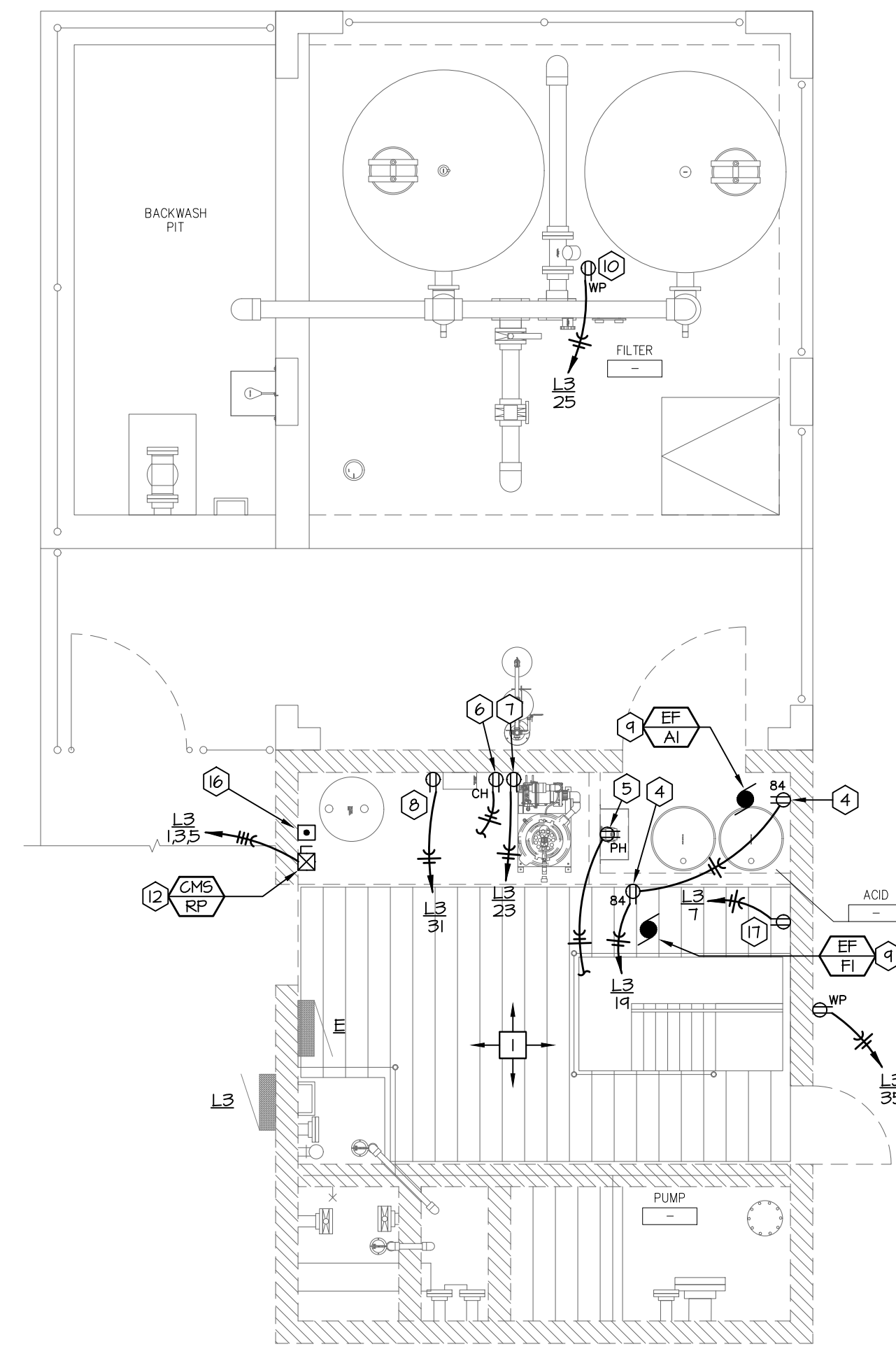
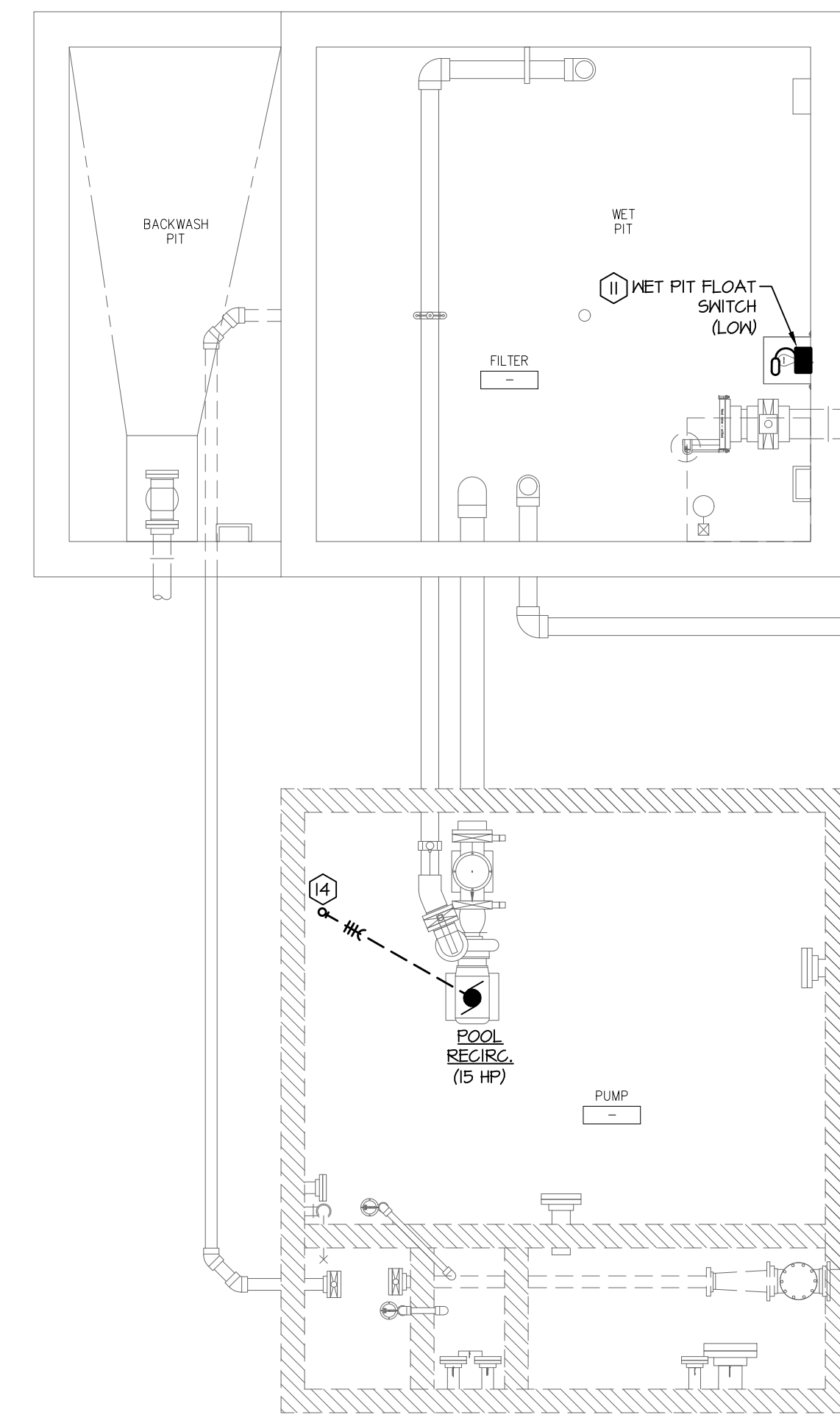


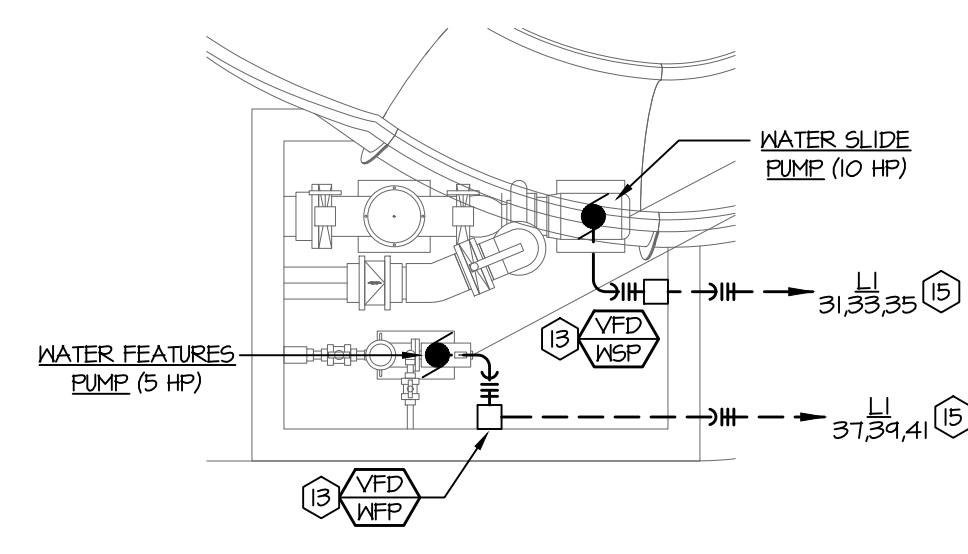
3 Lighting Plan
Scale: 1/4" = 1'-0"



2 Power Plan - Above Grade
Scale: 1/4" = 1'-0"



1 Power Plan - Below Grade
Scale: 1/4" = 1'-0"



4 Remote Pump Pit Power Plan
Scale: 1/4" = 1'-0"

GENERAL NOTES:

- A. THESE DRAWINGS ARE DIAGRAMMATIC IN NATURE AND INDICATE THE GENERAL EXTENT OF THE WORK. THE ELECTRICAL CONTRACTOR SHALL PROVIDE ALL PULL BOXES, JUNCTION BOXES AND INCIDENTAL MATERIALS AND LABOR FOR A COMPLETE AND FULLY FUNCTIONAL SYSTEM.
- B. ELECTRICAL CONTRACTOR SHALL DERATE CONDUCTORS AS REQUIRED BY THE N.E.C. WHEN GROUPED IN COMMON SCHEDULES.
- C. COORDINATE THE EXACT LIGHT FIXTURE LOCATIONS WITH THE ARCHITECTURAL DRAWINGS.
- D. ALL WIRES RUN BELOW GRADE, IN CONCRETE THAT IS IN DIRECT CONTACT WITH THE EARTH, OR MASONRY THAT IS IN DIRECT CONTACT WITH THE EARTH SHALL BE MET LOCATION LISTED.
- E. ALL RECEPTACLES SHALL BE GFI PROTECTED UNLESS NOTED OTHERWISE. AT CONTRACTOR'S OPTION, GFI BREAKERS OR RECEPTACLES MAY BE USED. RECEPTACLES SERVING CONCESSIONS REFRIGERATION EQUIPMENT, CHEMICAL CONTROLLERS, AND EXHAUST FANS SHALL NOT BE GFI PROTECTED.
- F. WHERE PHONE, DATA OR PHONE/DATA OUTLETS ARE SHOWN ON PLANS, CONTRACTOR SHALL PROVIDE A BACKBOX AND CONDUIT WITH PULL STRING BACK TO AN ACCESSIBLE LOCATION AT TELEPHONE BOARD FOR FUTURE WIRING INSTALLATION BY OWNER.
- G. ANY INTERRUPTION OF EXISTING SERVICES AND/OR EQUIPMENT SHALL BE PERFORMED AT A TIME APPROVED IN ADVANCE BY THE OWNER'S REPRESENTATIVE SO AS NOT TO INTERFERE WITH THE PRESENT BUILDING OPERATION.
- H. REMOVE ALL ELECTRICAL ITEMS ON THE SITE AND IN THE FILTER, PUMP, AND CHEMICAL AREAS NO LONGER REQUIRED AFTER THE RENOVATION. THIS SHALL INCLUDE BUT IS NOT LIMITED TO PUMPS, FILTERS, STARTERS, FEEDERS, AND CONTROLS.

DEMO PLAN NOTES:

1. REMOVE PUMP MOTOR STARTERS AND ALL ELECTRICAL FEEDERS WITHIN PUMP HOUSE. PREPARE FOR INSTALLATION OF NEW ELECTRICAL FEEDERS.

PLAN NOTES:

1. REMOVE FIXTURE AND PROVIDE NEW. ROUTE FEEDER THROUGH EXISTING LIGHTING CONTRACTOR PRIOR TO MAKING PANEL CONNECTION.
2. CONNECT TO EXISTING LIGHTING CIRCUIT.
3. ROUTE ALL FEEDERS BELOW GRADE BETWEEN VFD AND PUMP MOTOR. REFER TO VFD SCHEDULE FOR PUMP POWER INFORMATION.
4. EXHAUST FAN RECEPTACLE. COORDINATE EXACT HEIGHT AND LOCATION WITH MECHANICAL CONTRACTOR PRIOR TO ROUGH-IN.
5. PH FEEDER RECEPTACLE. CONNECT CIRCUIT TO CHEMICAL CONTROLLER. SEE CIRCULATION PUMP CONTROL SCHEMATIC ON SHEET SP-E2 FOR MORE INFORMATION. PROVIDE ENGRAVED COVERPLATE DENOTING POOL SERVED AND PH FEEDER.
6. CHLORINE FEEDER RECEPTACLE. CONNECT CIRCUIT TO CHEMICAL CONTROLLER. SEE CIRCULATION PUMP CONTROL SCHEMATIC ON SHEET SP-E2 FOR MORE INFORMATION. PROVIDE ENGRAVED COVERPLATE DENOTING POOL SERVED AND CHLORINE FEEDER.
7. CHLORINE FEEDER CONSTANT POWER RECEPTACLE. PROVIDE ENGRAVED COVERPLATE DENOTING POOL SERVED AND CHLORINE FEEDER. COORDINATE EXACT HEIGHT OF RECEPTACLE WITH MANUFACTURER.
8. CHEMICAL CONTROLLER RECEPTACLE. PROVIDE ENGRAVED COVERPLATE DENOTING POOL SERVED AND CHEMICAL CONTROLLER.
9. PROVIDE 6'-0" NEMA PLUG AND COORDINATE TO EXHAUST FAN.
10. PROVIDE 120V OUTLET FOR FLOW METER. MOUNT TO INSTRUIT APPROXIMATELY 48" AFF. FEEDER BETWEEN INSTRUIT AND ELECTRICAL PANEL SHALL BE BELOW GRADE.
11. PROVIDE (2) ZOELLER SWITCH-MATE PIGGYBACK VARIABLE LEVEL FLOAT SWITCHES (VLFs). FLOATS SHALL BE NORMALLY OPEN (NO) OR NORMALLY CLOSED (NC) PER NOTES, BE RATED FOR 15A AT 125V, AND SHALL NOT CONTAIN MERCURY. COORDINATE MOUNTING HEIGHT WITH POOL ENGINEERS. INSTALL PER MANUFACTURER'S INSTRUCTIONS.
12. PROVIDE COMBINATION MOTOR STARTER AT APPROXIMATELY 48" AFF. ROUTE ALL FEEDERS BELOW GRADE BETWEEN COMBINATION MOTOR STARTER AND PUMP MOTOR. CONDUIT TO PUMP SHALL BE SURFACE MOUNTED WHEN ROUTED VERTICALLY. COORDINATE INSTALLATION WITH POOL CONTRACTOR.
13. PROVIDE VFD AT APPROXIMATELY 48" AFF. ROUTE ALL FEEDERS BELOW GRADE BETWEEN VFD AND PUMP MOTOR. CONDUIT TO PUMP SHALL BE SURFACE MOUNTED WHEN ROUTED VERTICALLY. COORDINATE INSTALLATION WITH POOL CONTRACTOR.
14. ROUTE ALL FEEDERS BELOW GRADE BETWEEN COMBINATION MOTOR STARTER AND PUMP MOTOR. REFER TO COMBINATION MOTOR STARTER SCHEDULE FOR PUMP POWER INFORMATION.
15. REFER TO SITE PLAN ON SHEET SP-ME2 FOR FEEDER ROUTING. REFER TO VARIABLE FREQUENCY DRIVE FOR FEEDER SIZING.
16. PROVIDE MOMENTARY START/STOP STATION ADJACENT TO COMBINATION MOTOR STARTER FOR WATER FEATURES PUMP. COORDINATE EXACT LOCATION WITH POOL ENGINEER DURING CONSTRUCTION. ROUTE START/STOP WIRING BETWEEN START/STOP STATION AND WATER FEATURES VFD AS NOTED ON PUMP SCHEMATIC FOUND ON SHEET SP-E2.
17. IRRIGATION CONTROLLER RECEPTACLE. COORDINATE LOCATION WITH GENERAL CONTRACTOR AND OWNER.

LIGHT FIXTURE SCHEDULE

| MARK | MANUFACTURER | MODEL | LAMP DATA | | | VOLTS | MOUNTING | TOTAL WATTS | DESCRIPTION | NOTES |
|------|--------------|--|-----------|------|-------------|-------|----------|-------------|--------------------------------------|-------|
| | | | LUMENS | TYPE | COLOR (K) | | | | | |
| A | WILLIAMS | 96-4-L40/B40-HIAFR-NET/I-DRV-UNV | 4000 | LED | 4000K/82CRI | UNV | SURFACE | 40 | 4" DEEP ENCLOSED INDUSTRIAL, 4FT | 1 |
| A-EM | WILLIAMS | 96-4-L40/B40-HIAFR-EM/I/8VC-NET/I-DRV-UNV | 4000 | LED | 4000K/82CRI | UNV | SURFACE | 40 | 4" DEEP ENCLOSED INDUSTRIAL, 4FT, EM | 1 |
| B-EM | LITHONIA | WDGE2-LED-P3-40K-80CRI-VN-MVOLT-SRM-E4WH-DBLXD | 3000 | LED | 4000K/80CRI | UNV | SURFACE | 23 | SURFACE MOUNTED WALL SCENCE, EM | 12 |

- NOTES:**
1. FIXTURE SHALL BE MET LISTED.
 2. FIXTURE AND ALL ACCESSORIES SHALL HAVE THE SAME FINISH. ARCHITECT SHALL SELECT FINISH FROM MANUFACTURER'S STANDARD COLORS DURING THE SUBMITTAL PROCESS.

GENERAL NOTES (APPLIES TO ALL ABOVE):

- A. ALL LIGHT FIXTURES SCHEDULED AND SHOWN ON THE PLANS WITH AN 'EM' TAG SUFFIX SHALL HAVE AN INTEGRAL EMERGENCY DRIVER.
- B. CONTRACTOR SHALL VERIFY CEILING TYPE PRIOR TO ORDERING ALL FIXTURES.



WICHITA, KANSAS
Pool Improvements
HARVEST PARK



CASEY JOHN STEINER
LICENSE #19423
Date: 8-14-20 Job #: 1820529
Drawn: CDW Checked: MST
Issue: CONSTRUCTION DOCUMENTS

ELECTRICAL
PLAN

SP-E1