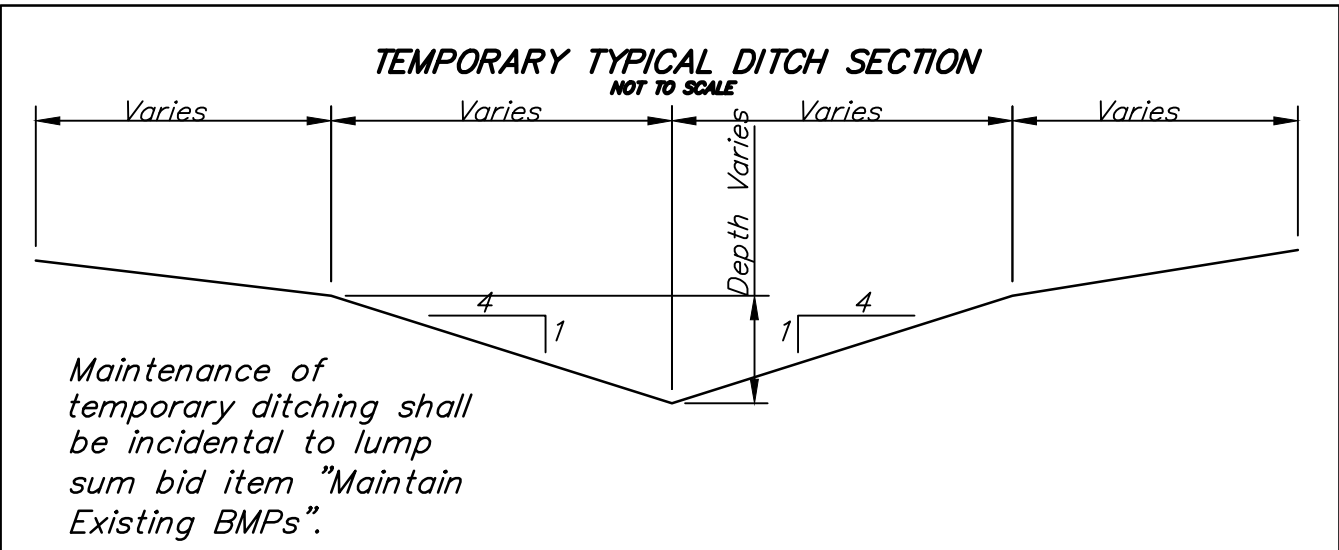


EROSION CONTROL MEASURE	INSTALL	MAINTAIN	REMOVE
BACK OF CURB PROTECTION (LF)	2,785	0	0
CONSTRUCTION ENTRANCE (EA)	0	1	0
CURB INLET BARRIER (EA)	2	0	0
DITCH CHECK (EA)	1	0	0
DROP INLET PROTECTION (EA)	9	0	0
EROSION CONTROL (LS)	0	0	0
EROSION CONTROL BERM (LF)	0	0	0
SILT FENCE (LF)	0	0	0
EROSION CONTROL MAT (SY)	0	0	0

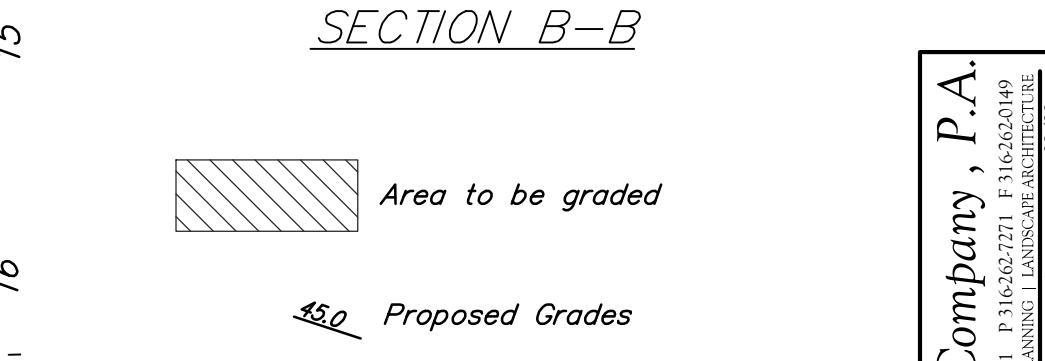
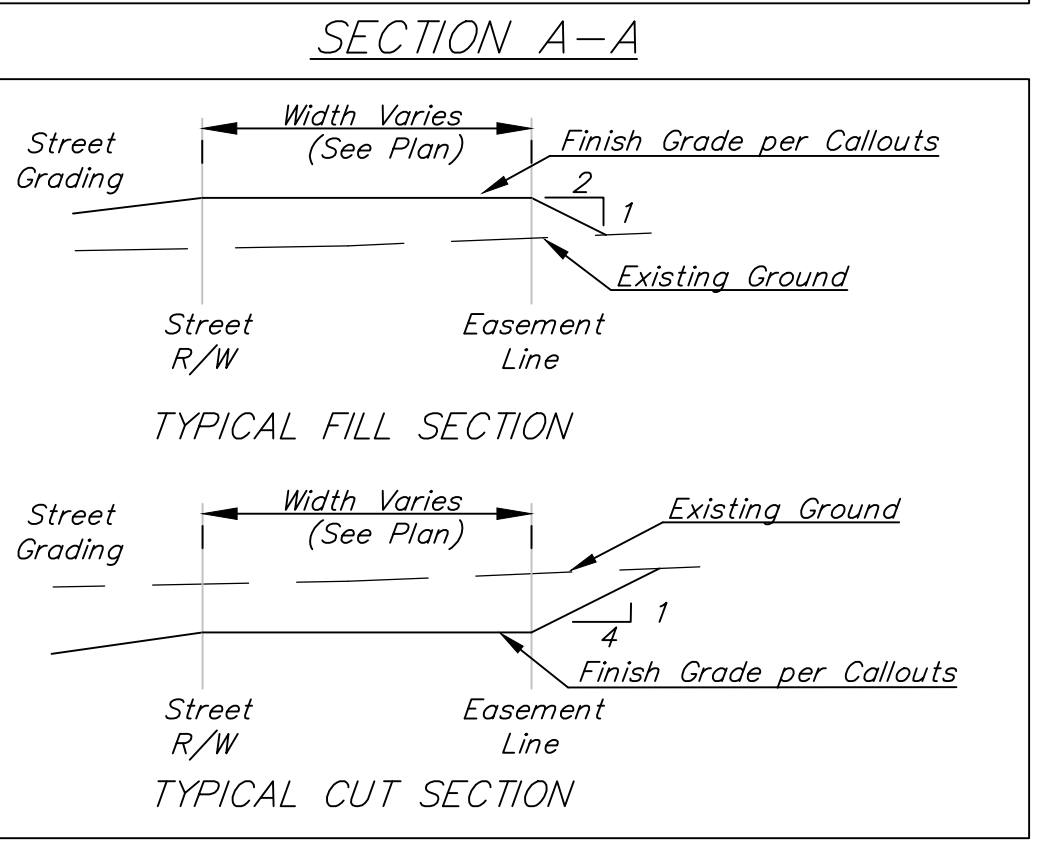
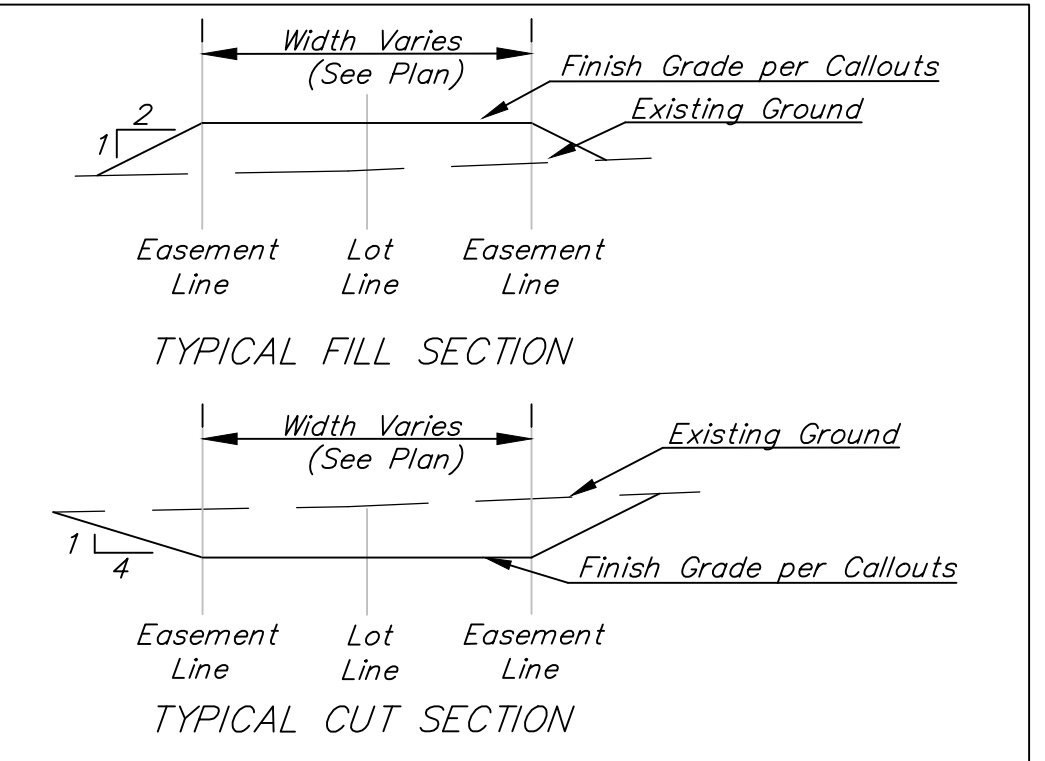
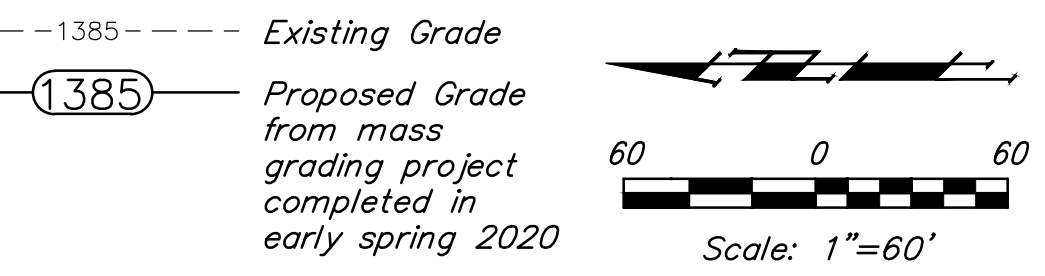
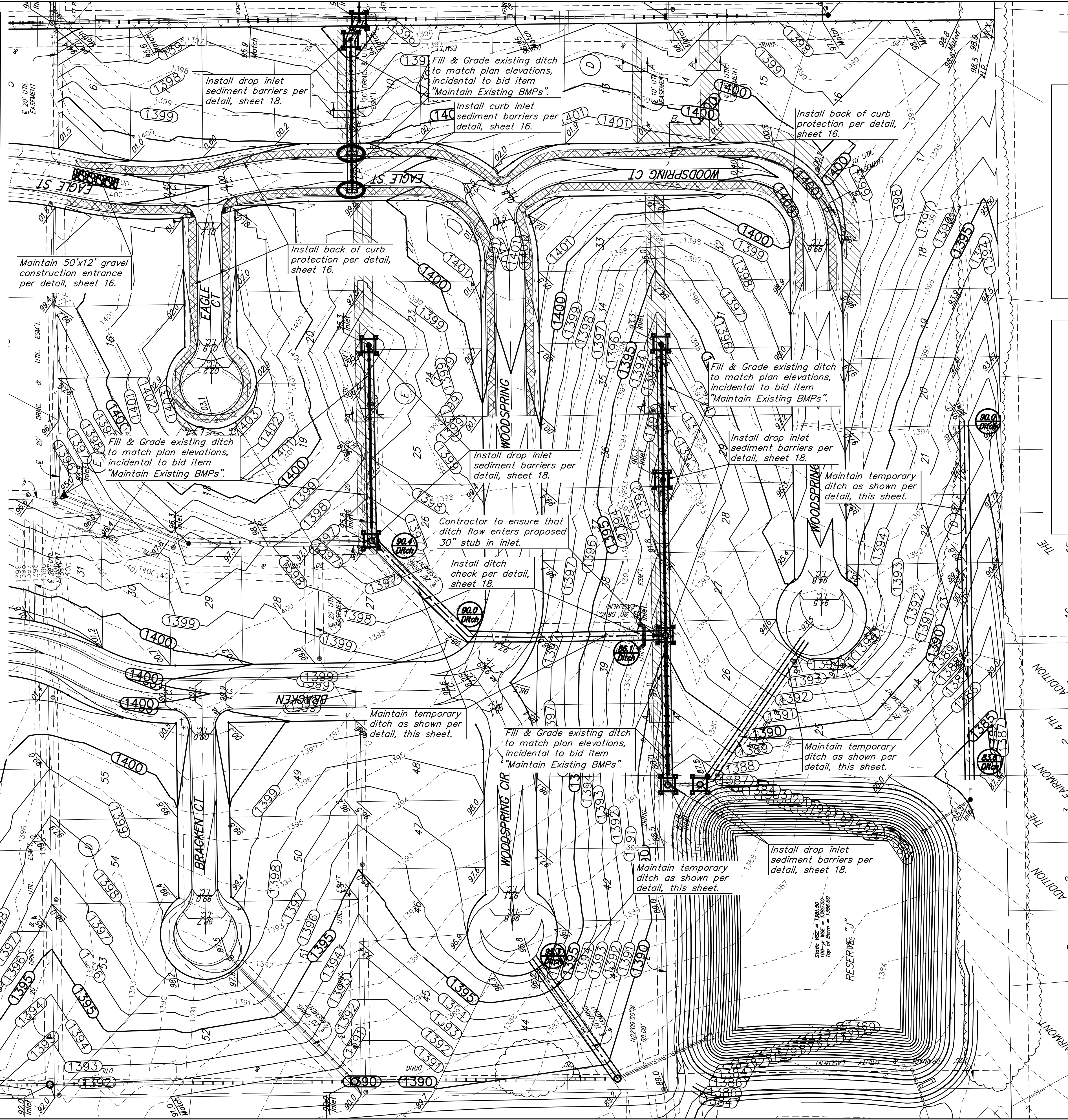
QUANTITIES ARE FOR INFORMATION ONLY! CONTRACTOR SHALL VERIFY QUANTITIES PER FINAL BID QUANTITY SHEET.

* ALL EXISTING BMPs INCLUDING CONSTRUCTION ENTRANCE, SEDIMENT BARRIERS, SILT FENCE, EROSION CONTROL BERM, AND EROSION CONTROL MAT SHALL BE MAINTAINED AND REPAIRED IF NECESSARY. REPLACEMENT OR REMOVAL OF EROSION CONTROL MEASURES TO BE PAID FOR BY L.S. BID ITEM "MAINTAIN EXISTING BMPs"

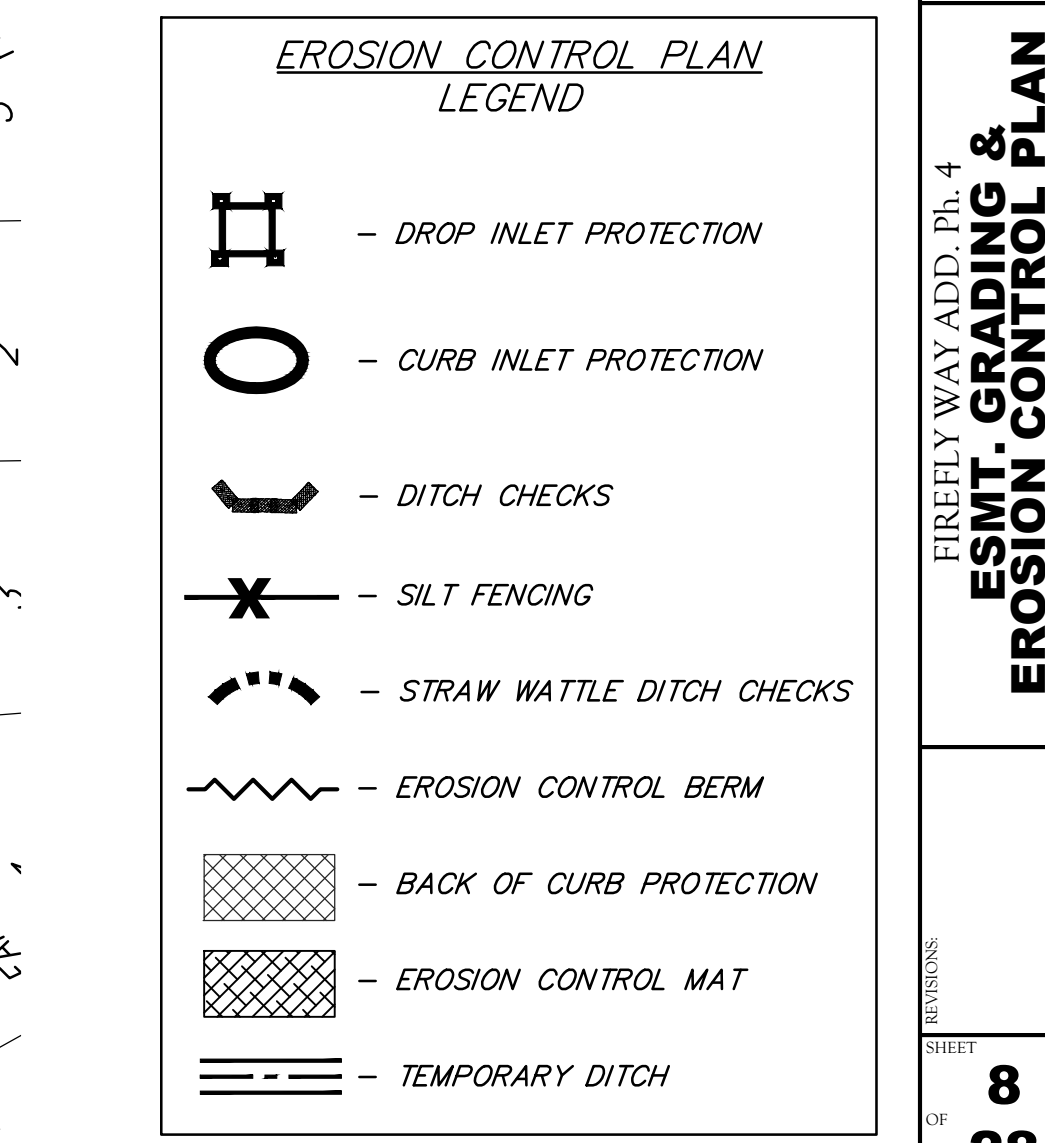


All easements have been graded prior to construction with the mass grading plan. Existing temporary ditches that are indicated to be filled shall be filled and graded as noted and easements shown to be fine graded with this project after street & s/w construction has been completed. All cost associated with filling and grading temporary ditching and fine grading shall be included in the lump sum bid item "Easement Grading".

Areas to be seeded as indicated on the cover sheet. The approximate temporary seeding area is 1.8 acres. This area is based on 875 L.F. pipe at 40'-45' wide plus street R/W and is for information only.



The contractor shall fill and grade the easements as shown to the elevations given on the easement grading plan. All costs for grading shall be incidental to the Easement Grading Bid Item. The contractor shall 'straight' grade the easements between the elevations given. Where a callout designates 'Match', the contractor will grade to the existing ground elevation. The existing ditch cross sections are shown below.



Baughman Company, P.A.
 ENGINEERING, PLANNING & ARCHITECTURE
 1000 W. WILSON AVE., SUITE 100
 FAYETTEVILLE, AR 72701
 APPROVED: [Signature] DATE: 08/20/20

FIRELY WAY ADD. PH. 4
 ESMT. GRADING &
 EROSION CONTROL PLAN
 STREET & SWS IMPROVEMENTS