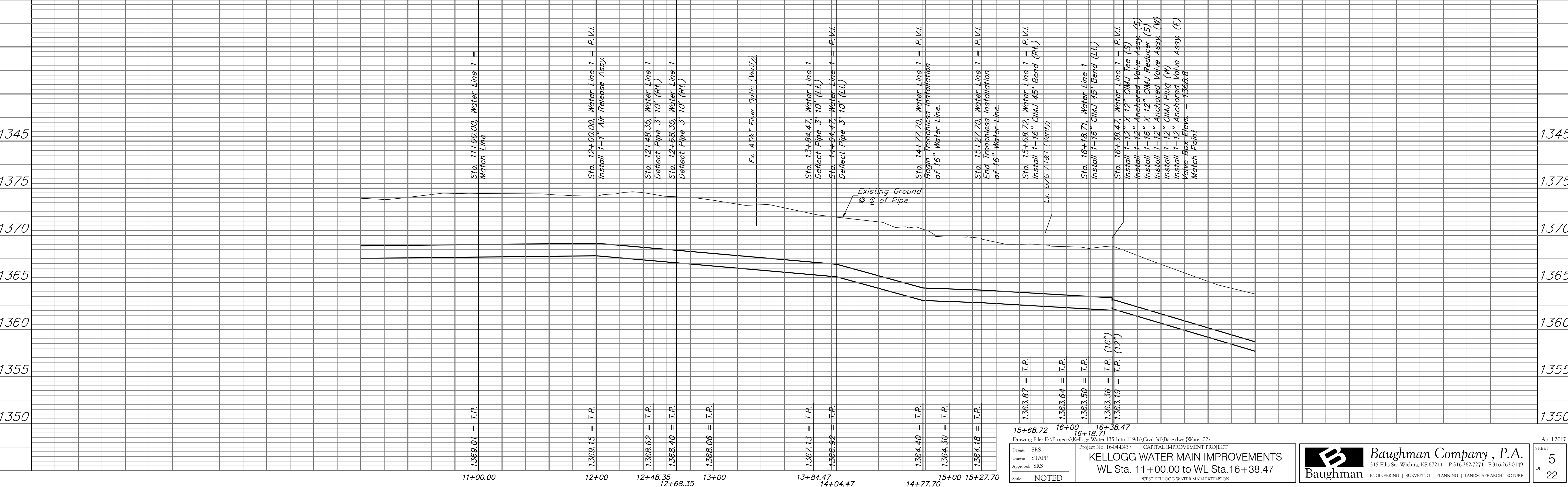
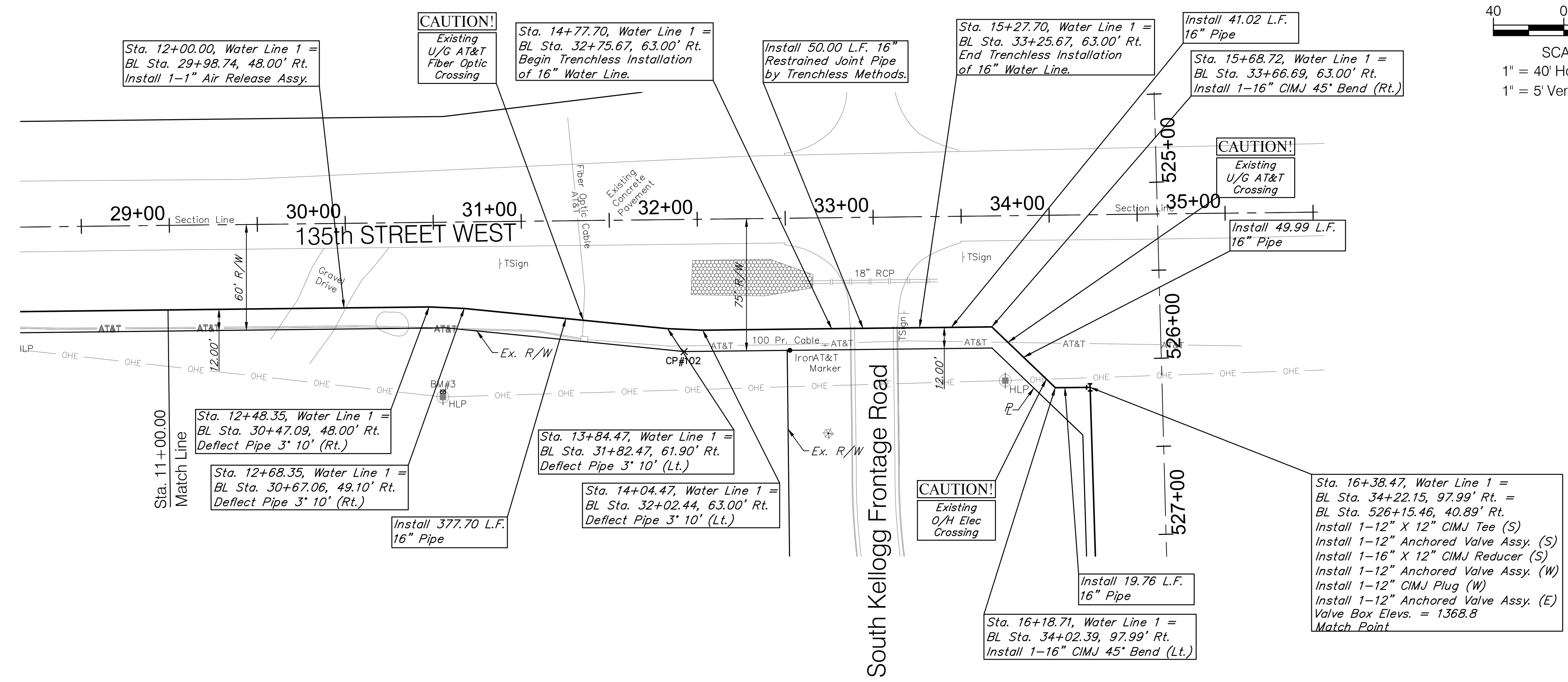
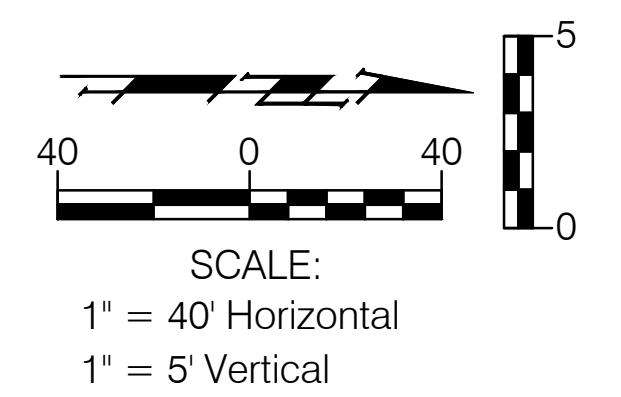


**BENCHMARKS:**  
 BM #3 - Chiseled "□" on the Concrete Base of the First Transmission Line Pole South of the South Kellogg Frontage Road  
 BL Sta. 30+54.47, 96.63' Lt.  
 Elev = 1373.82 (NAVD 88)



15+68.72 16+00 16+38.47  
 16+18.71  
 Drawing File: E:\Projects\Kellogg Water-135th to 119th\Civil 3d\Bases.dwg (Water 02)  
 Project No: 16-04-E437 CAPITAL IMPROVEMENT PROJECT  
 Design: SRS  
 Drawn: STAFF  
 Approved: SRS  
 Scale: NOTED  
**KELLOGG WATER MAIN IMPROVEMENTS**  
 WL Sta. 11+00.00 to WL Sta. 16+38.47  
 WEST KELLOGG WATER MAIN EXTENSION

**Baughman Company, P.A.**  
 315 Ellis St. Wichita, KS 67211 P 316-262-7271 F 316-262-0149  
 ENGINEERING | SURVEYING | PLANNING | LANDSCAPE ARCHITECTURE