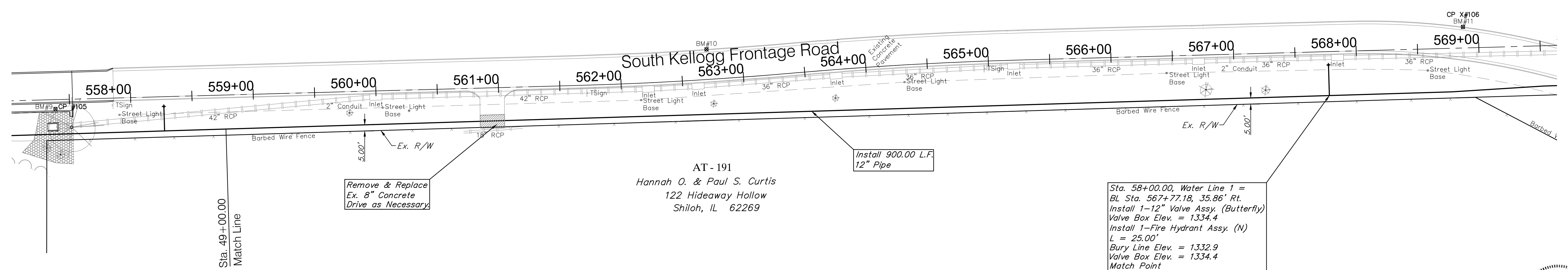
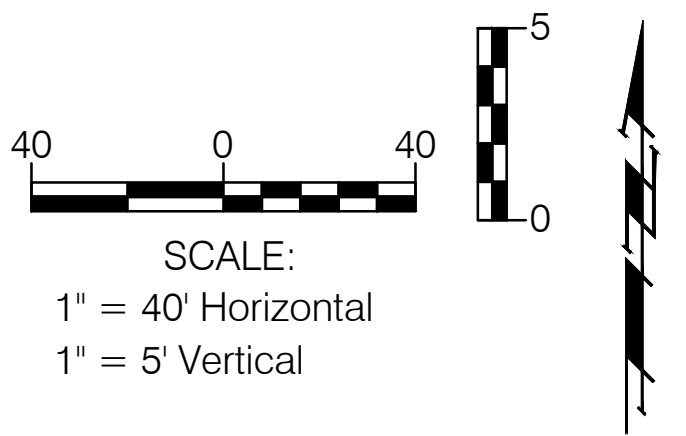


**BENCHMARKS:**  
 BM #10 - Chiseled "X" Cut into the Top of the North Curb of the South Frontage Road  
 BL Sta. 562+71.33, 24.58' Lt.  
 Elev = 1327.66 (NAVD 88)



**Note:**  
 Pavement, Sidewalks, and Etc. To Be Removed Are Indicated By:

Sta. 58+00.00, Water Line 1 =  
 BL Sta. 567+77.18, 35.86' Rt.  
 Install 1-12" Valve Assy. (Butterfly)  
 Valve Box Elev. = 1334.4  
 Install 1-Fire Hydrant Assy. (N)  
 L = 25.00'  
 Bury Line Elev. = 1332.9  
 Valve Box Elev. = 1334.4  
 Match Point

