

SANITARY SEWER EXTENSION

to serve

Whispering Lakes Addition, Phase 5

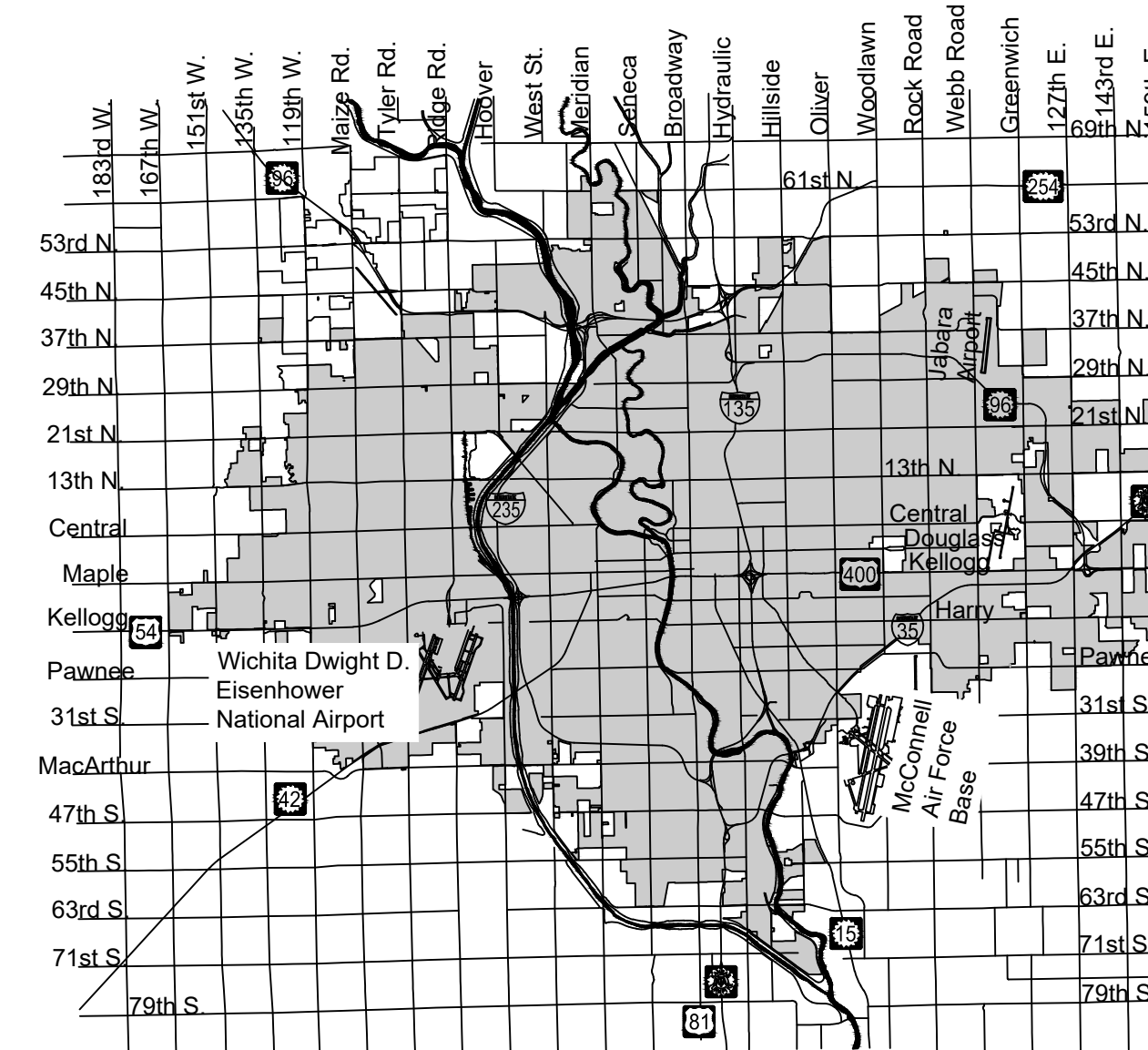
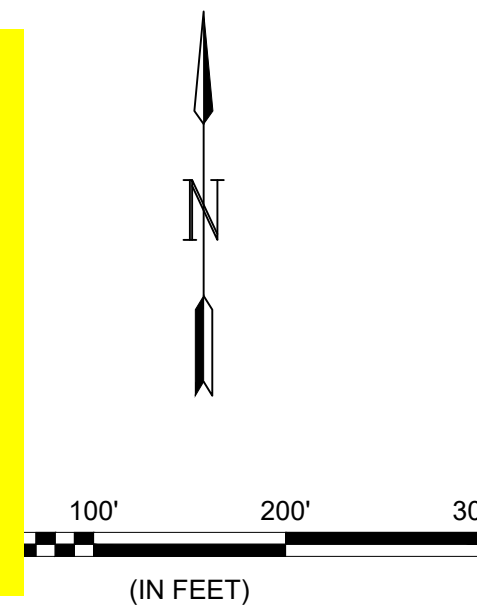
CITY OF WICHITA, KANSAS

Gary Janzen, P.E. City Engineer

Project Number 468-2019-005932

O.C.A. NO. 7444507

McCullough - Contractor
K. Yale - City of Wichita, Field Project Engineer
E. Flores - City of Wichita, Inspector
As-built
Stubs & Risers
Release Date (for connection purposes only): 2/10/2020
Completion Date: 2/2/2021
pdf: apr 9/24/2020



Vicinity Map

PROJECT LOCATION

GENERAL NOTES:

- The Contractor shall comply with all applicable safety regulations. All construction shall be completed following current City Standard Specifications and Special Provisions.
- Contractor will be required to provide notice to utility companies a minimum of seventy-two (72) hours prior to any excavation, as follows:
 Kansas One-Call 687-2470
 The Contractor must notify the following in case of an emergency:
 AT&T 1-800-246-8464
 City of Wichita Water & Sewer Dept. 1-316-219-8921
 City of Wichita Stormwater 1-316-268-4090
 City of Wichita Traffic 1-316-268-4034
 Coffeyville Resources 1-918-886-1082
 Cox Communications 1-888-249-3530
 Kansas Gas Service 1-888-482-4950
 Phillips 66 Pipeline 1-918-661-5535
 Westar Energy 1-800-544-4857
- Utility service lines, poles, etc. are to be adjusted as necessary by others prior to construction unless the plans specifically call for their adjustment by the Contractor or unless the plans specifically identify a utility to be adjusted by its owner during construction. Existing utilities and their location, as shown on the plans, represent the best information obtainable for design. The Contractor will be required to work around existing utilities within the right-of-way which do not conflict with proposed construction.
- Rubble from the removal of miscellaneous structures and excess excavation which is to be wasted shall be disposed of on sites to be provided by the Contractor. These sites shall be approved by the Engineer as to suitability, appearance and site location. Locations, in the opinion of the Engineer, that will leave an unsightly appearance will not be approved. All disposal sites must be approved by the Kansas Department of Health and Environment. Material either stockpiled or disposed of in a flood plain will require a Kansas State Board of Agriculture permit. Any material dumped in waters of the United States or wetlands is subject to U.S. Corps. of Engineers permitting regulations. Any material buried or stockpiled beyond approved construction limits will require additional archaeological investigations unless buried in a previously approved borrow location.
- Trees and shrubs in public right-of-way which are in direct conflict with proposed new construction shall be removed by the Contractor with the Engineer's approval. Trees and shrubs which are not in direct conflict with proposed new construction shall be saved and protected from damage.
- The Contractor shall give all property owners and/or tenants of developed property abutting the construction of this project a minimum of ten (10) days notice prior to start of construction.
- The Contractor shall be responsible for preserving property irons. The Contractor will be required to re-establish any property irons which are damaged or destroyed by his construction operations. Such irons shall be re-established by a licensed land surveyor in accordance with state laws.
- If traffic will be impacted by construction, a traffic control plan must be submitted and approved by the City Traffic Engineer at traffic@wichita.gov before construction can begin. The Contractor shall be responsible for all traffic control measures to facilitate construction. All construction zone markings and signage shall conform to the latest version of the Manual on Uniform Traffic Control Devices (MUTCD) as published by the US Dept. of Transportation, Federal Highway Administration. All costs associated with construction markings and signage shall be the Contractors responsibly.
- All elevations shown are NAVD 88 unless otherwise noted.
- All areas disturbed during construction that will not be under proposed pavement shall be restored to match existing conditions.
- The Contractor shall protect from damage and support existing utilities through constructions as approved by the utility owner and the Engineer at the contractors expense.

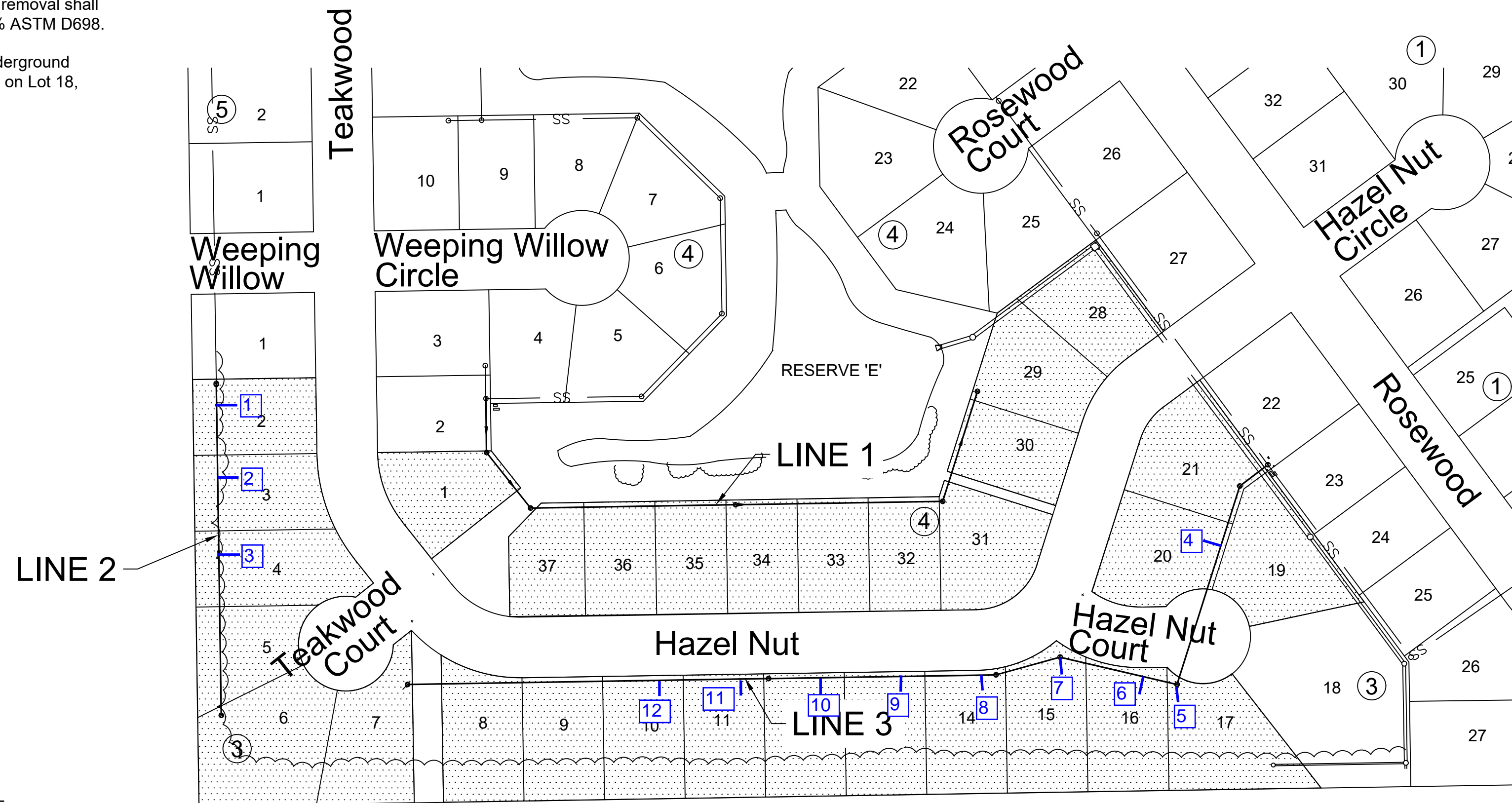
- Contractor shall limit the extent of trench openings overnight and weekends to less than 50 feet.
- All stubs and plugged pipes shall be located with green plastic tape in the same manner as risers.
- Connecting to Existing Manholes:
 Prior to laying sewer lines using existing stubs in existing manholes, the Contractor shall expose and verify the elevation, grade and alignment of existing stubs and notify the Engineer of any deviation from the plans. Where connection to an existing manhole that does not have an existing stub or the stub is unusable due to elevation grade or alignment, the Contractor shall bore cut into existing manhole wall to make connection using approved water stop gasket, and reshape the existing manhole invert to provide smooth flow. The cost to connecting to existing manholes is incidental to the project.
- Contractor shall provide positive drainage away from all manhole covers.
- The Contractor shall prevent any construction debris from entering the existing sanitary sewer during construction.
- The Contractor shall be responsible for maintaining continuous flow of sewage through construction. Contractors proposed method for maintaining sewage flow shall be submitted and approved by the Sewer Maintenance Division (316-268-4073) prior to starting and by-passing of sewage flows.
- Any over excavation from manhole and pipe removal shall be backfilled with AB-3 compacted to 90-95% ASTM D698.
- Excess dirt generated from installation of underground utilities is to remain on site and be stockpiled on Lot 18, Block 3.

Benchmarks

BENCHMARK #1:
 CHISELED SQUARE ON THE TOP OF CURB, ON THE NORTH SIDE OF WOODCREEK STREET, AT THE SOUTHWEST CORNER OF LOT 12.
 ELEVATION = 1295.17 (NAVD88)

BENCHMARK #2:
 CHISELED SQUARE ON THE TOP OF CURB, ON THE EAST SIDE OF ROSEWOOD STREET, AT THE SOUTHWEST CORNER OF LOT 36.
 ELEVATION = 1296.28 (NGVD29)

BUILT PER PLAN



Sheet Index	
Sheet	Title
1	Titlesheet
2	Pre-Cast Sanitary Sewer Manhole
3	Manhole Frame & Cover
4	Vertical Riser
5	Photos
6	Sanitary Sewer 1
7	Sanitary Sewer 2
8	Sanitary Sewer 3
9	Sanitary Sewer 3
10	Coordinate Map
11	Point Tables
12	Erosion Control Plan
13	Back of Curb Protection
14	Silt Fence
15	Straw Bale
16	Street Improvement Projects
17	Subdivision Development Process
18	Final Plat

August 2019

PLANS PREPARED BY



File: L:\2019\19T41011 - Whispering Lakes Phase 5\Drawings\C3D\Sanitary Sewer\05 - Photos.dwg Last Save: 8/13/2019 4:59 PM Last saved by: CDJurey
 Last plotted by: Jurey, Caleb D. Plot Style: --- Plot Scale: 1:2,584.9 Plot Date: 8/13/2019 5:06 PM Plotter User: None



Figure 1
 Photograph of MH 1-0 from the south, viewing toward the north. Note the nearby utility structures. See Sheet 6.



Figure 2
 Photograph of Existing Manhole in Lot 22, Block 4 from the southwest viewing toward the northeast. Note the nearby utility structures and concrete waste. See Sheet 8.



© 2018 GARVER, LLC
 THIS DOCUMENT, ALONG WITH THE IDEAS AND DESIGNS CONVEYED HEREIN, SHALL BE CONSIDERED INSTRUMENTS OF PROFESSIONAL SERVICE AND ARE PROPERTY OF GARVER, LLC. ANY USE, REPRODUCTION, OR DISTRIBUTION OF THIS DOCUMENT, ALONG WITH THE IDEAS AND DESIGN CONTAINED HEREIN, IS PROHIBITED UNLESS AUTHORIZED IN WRITING BY GARVER, LLC OR EXPLICITLY ALLOWED IN THE GOVERNING PROFESSIONAL SERVICES AGREEMENT FOR THIS WORK.



REV.	DATE	DESCRIPTION	BY



CITY OF WICHITA
 WICHITA, KANSAS
 WHISPERING LAKES ADD. WICHITA
 PHASE 5 - SANITARY

Photos

JOB NO.: 19T41011
 DATE: JUL 2019
 DESIGNED BY: KWL
 DRAWN BY: CDJ

BAR IS ONE INCH ON ORIGINAL DRAWING
 0 1"
 IF NOT ONE INCH ON THIS SHEET, ADJUST SCALES ACCORDINGLY.

DRAWING NUMBER

SHEET NUMBER **5** OF **17**



© 2018 GARVER, LLC
 THIS DOCUMENT, ALONG WITH THE IDEAS AND DESIGNS CONVEYED HEREIN, SHALL BE CONSIDERED INSTRUMENTS OF PROFESSIONAL SERVICE AND ARE PROPERTY OF GARVER, LLC. ANY USE, REPRODUCTION, OR DISTRIBUTION OF THIS DOCUMENT, ALONG WITH THE IDEAS AND DESIGN CONTAINED HEREIN, IS PROHIBITED UNLESS AUTHORIZED IN WRITING BY GARVER, LLC OR EXPLICITLY ALLOWED IN THE GOVERNING PROFESSIONAL SERVICES AGREEMENT FOR THIS WORK.



REV.	DATE	DESCRIPTION	BY



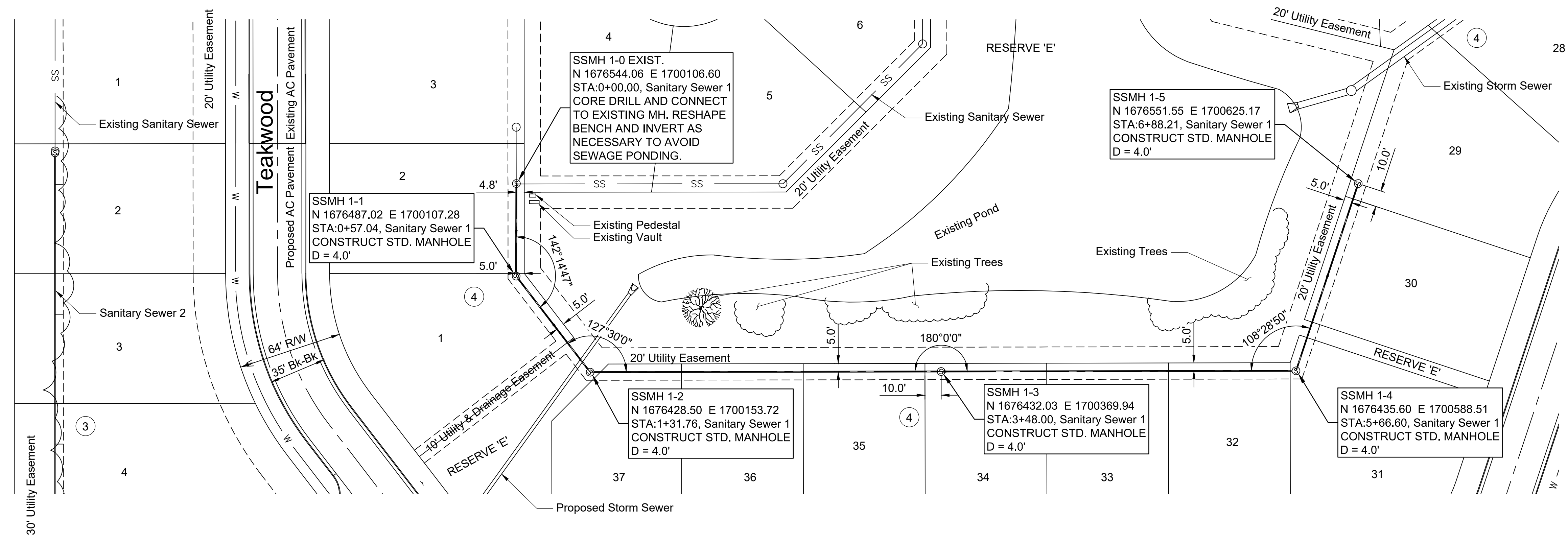
CITY OF WICHITA
 WICHITA, KANSAS
 WHISPERING LAKES ADD. WICHITA
 PHASE 5 - SANITARY

Sanitary Sewer 1

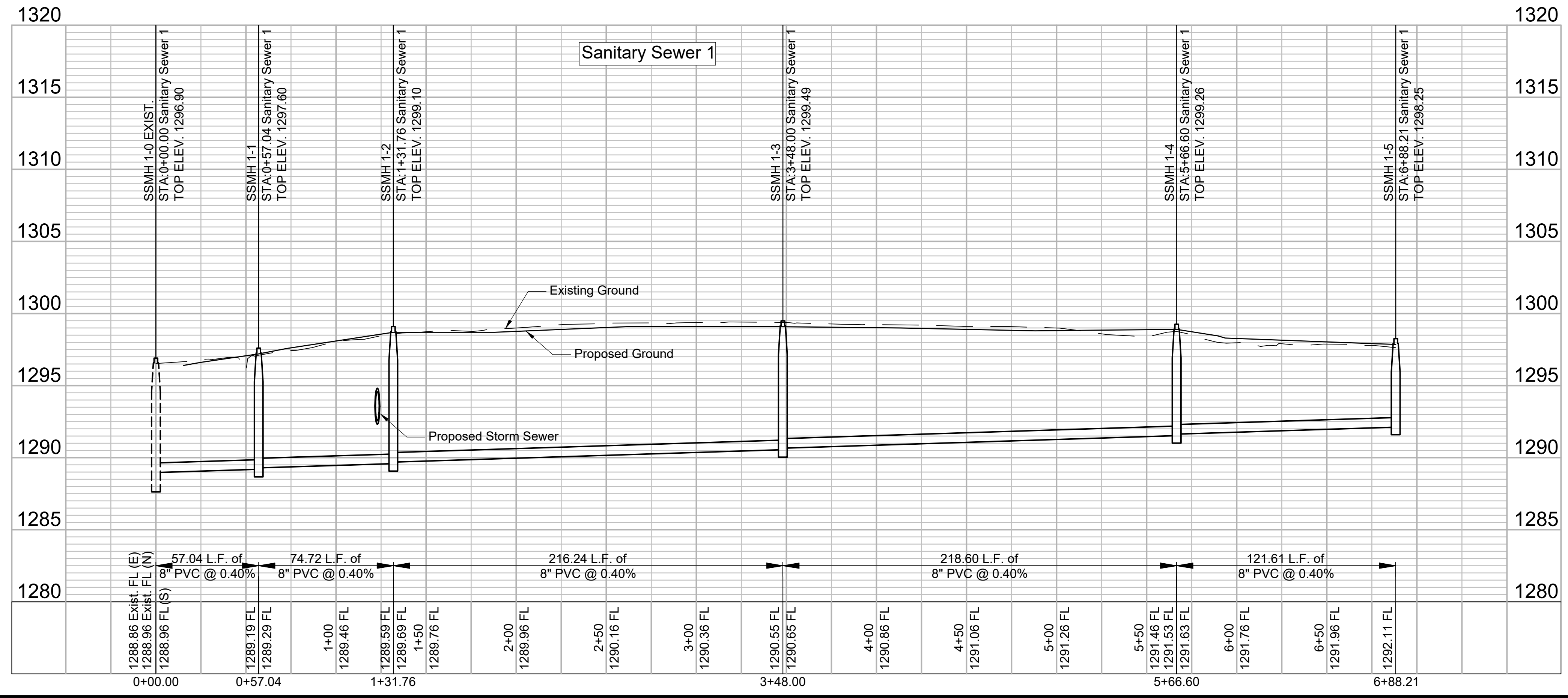
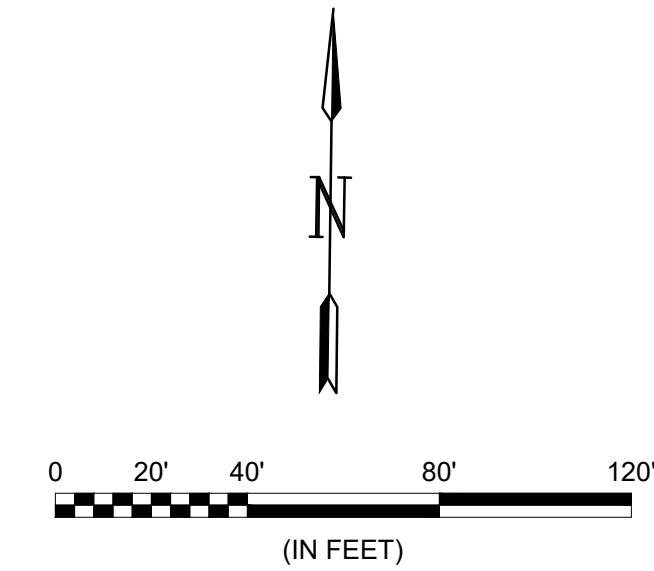
JOB NO.: 19T41011
 DATE: JUL 2019
 DESIGNED BY: KWL
 DRAWN BY: CDJ

BAR IS ONE INCH ON ORIGINAL DRAWING
 IF NOT ONE INCH ON THIS SHEET, ADJUST SCALES ACCORDINGLY.

DRAWING NUMBER

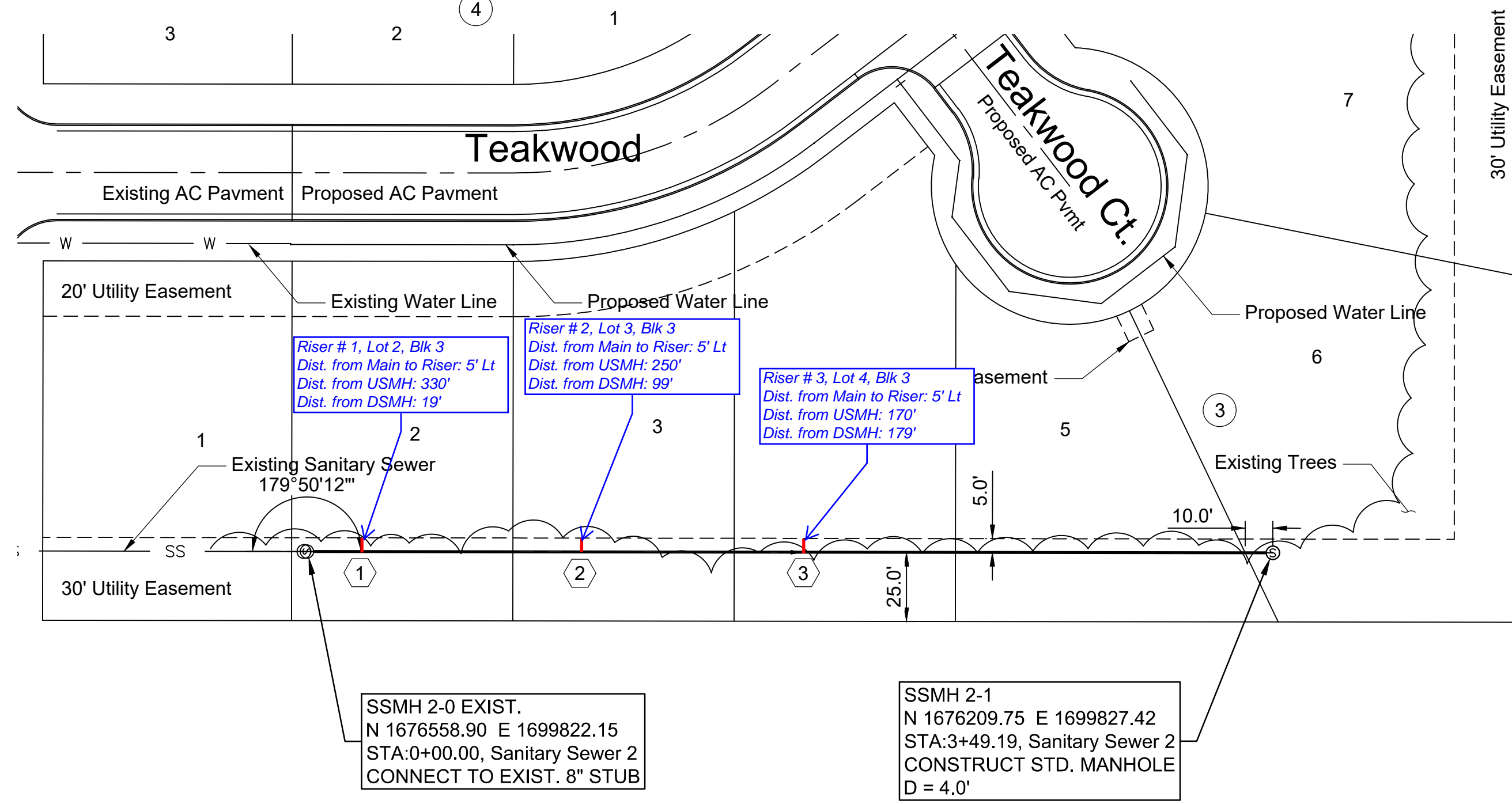


Note:
 Contractor shall trim or remove trees and vegetation as necessary to install sewer. Work is incidental to the bid item 'Pipe, SS 8", L.F.'

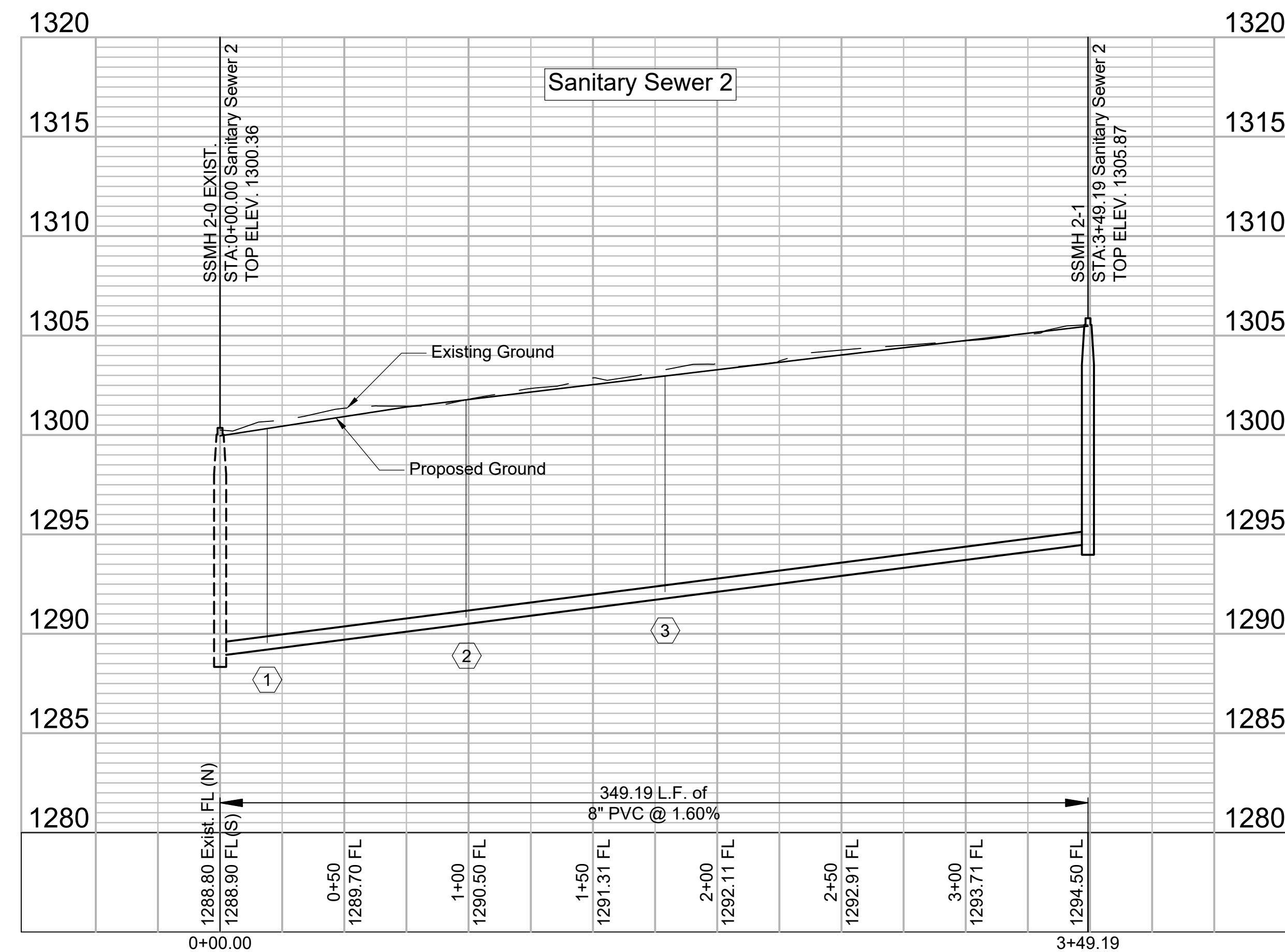
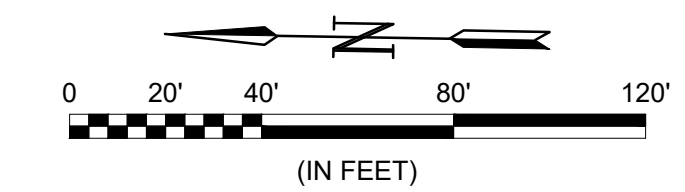


File: L:\2019\19T41011 - Whispering Lakes Phase 5\Drawings\C3D\Sanitary Sewer\05 - Sanitary Sewer 1.dwg Last Save: 8/13/2019 4:20 PM Last saved by: CDJurey
 Last plotted by: Jurey, Caleb D. Plot Style: --- Plot Scale: 1:2,584.9 Plot Date: 8/13/2019 4:21 PM Plotter used: None

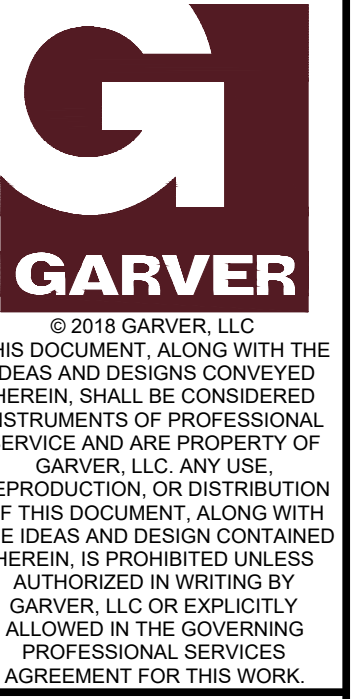
SEWER SERVICE TABLE							
NO.	TYPE	SERVING			STATION/DIRECTION	FOR INFORMATION ONLY	
		LOT NO.	BLOCK NO.	LINE NO.		APPROXIMATE LENGTH 4" PIPE	
					VERTICAL	HORIZONTAL	
1	8"x4" TEE	2	3	2	0+19 LT.	11.0'	5.0'
2	8"x4" TEE	3	3	2	0+99 LT.	11.0'	5.0'
3	8"x4" TEE	4	3	2	1+79 LT.	11.0'	5.0'



Note:
Contractor shall trim or remove trees and vegetation as necessary to install sewer. Work is incidental to the bid item 'Pipe, SS 8", L.F.'



File: L:\2019\19T41011 - Whispering Lakes Phase 5\Drawings\C3D\Sanitary Sewer\06 - Sanitary Sewer 2.dwg Last Save: 8/13/2019 3:06 PM Last saved by: CDJurey
Last plotted by: Jurey, Caleb D. Plot Date: 8/13/2019 4:21 PM Plotter used: None



REV.	DATE	DESCRIPTION	BY



Sanitary Sewer 2

JOB NO.: 19T41011
DATE: JUL 2019
DESIGNED BY: KWL
DRAWN BY: CDJ

BAR IS ONE INCH ON ORIGINAL DRAWING
IF NOT ONE INCH ON THIS SHEET, ADJUST SCALES ACCORDINGLY.

DRAWING NUMBER

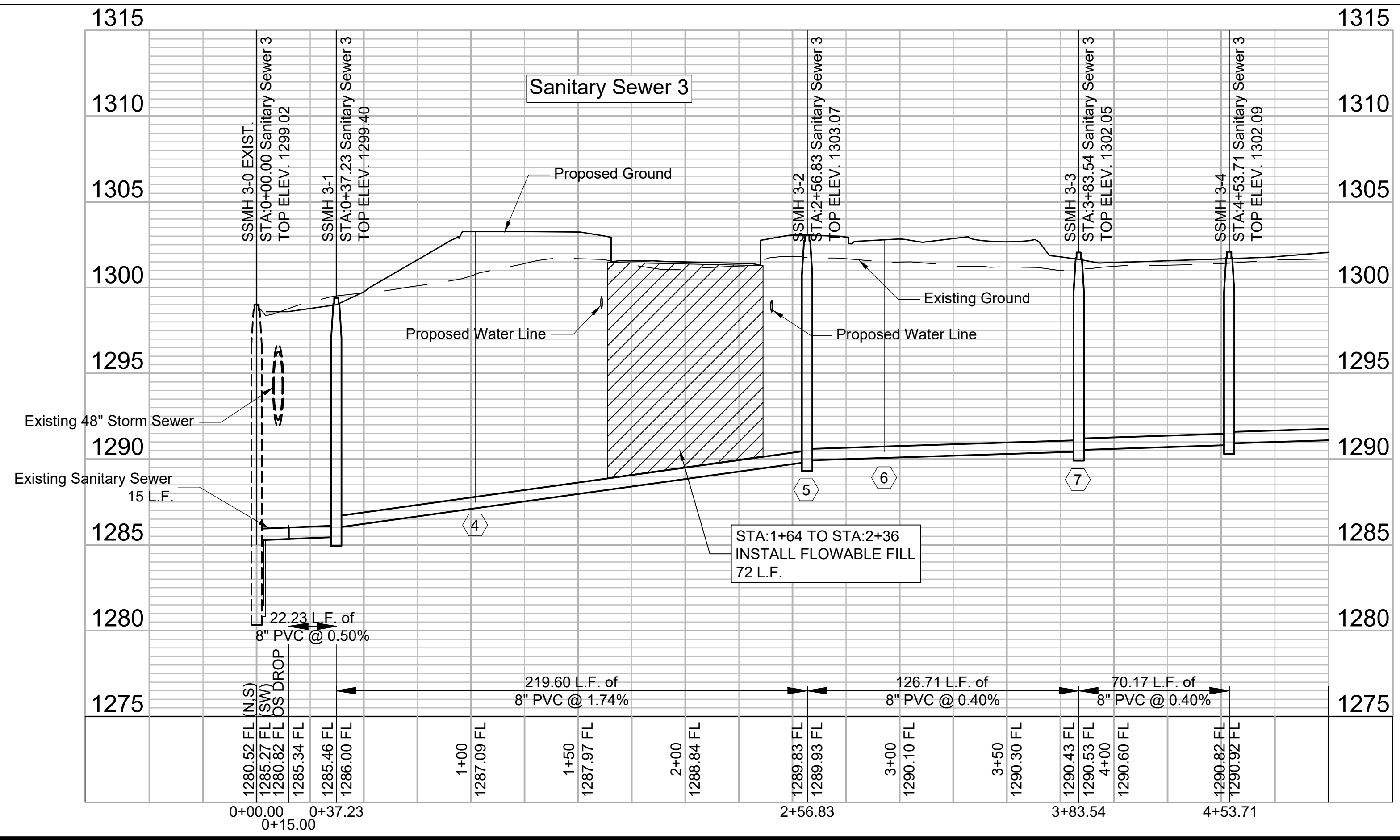
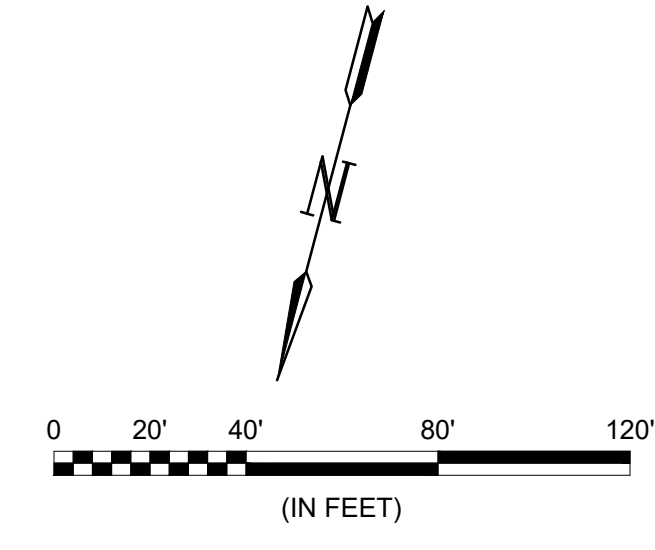
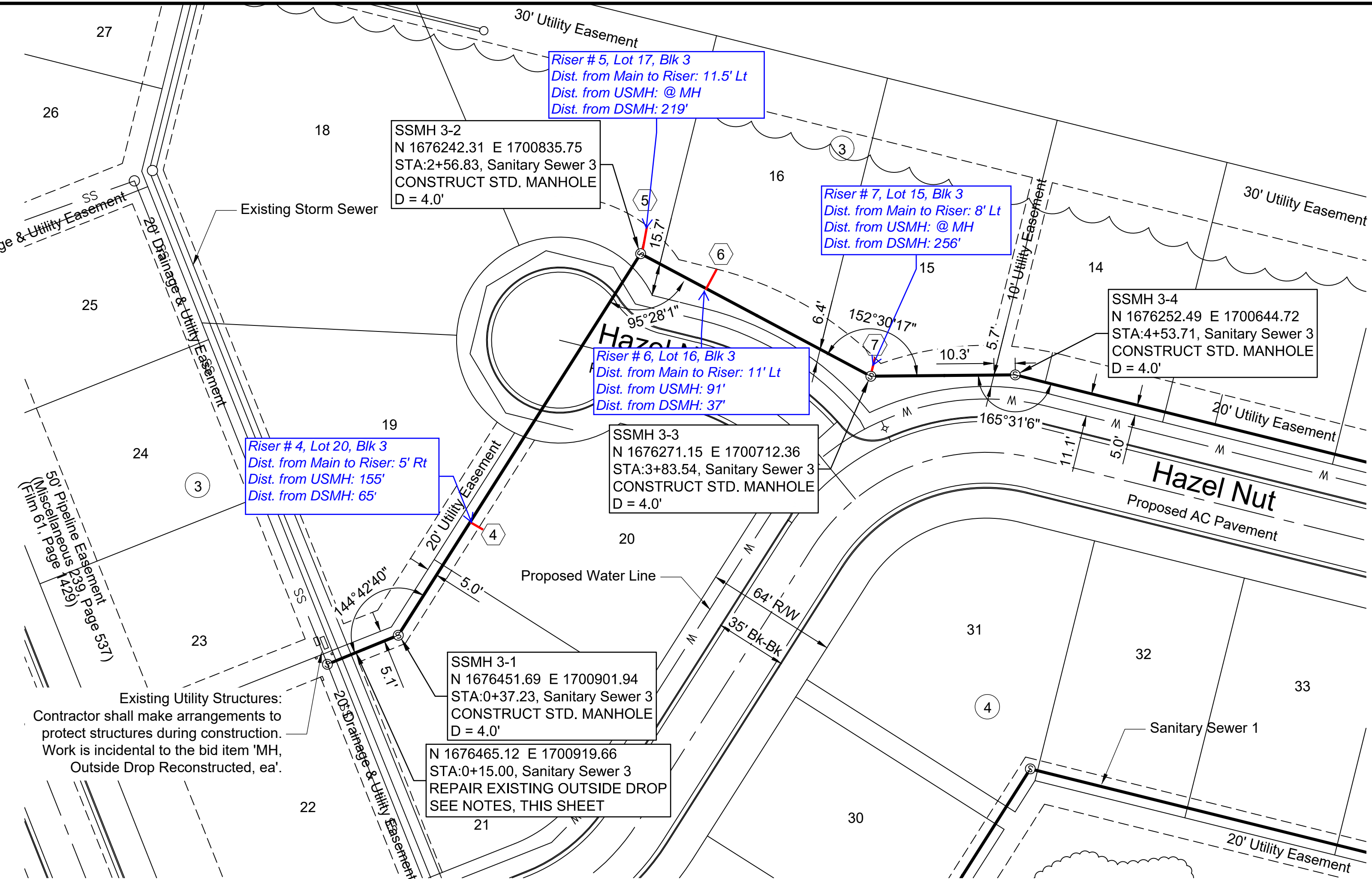
SHEET NUMBER **7** OF **17**



REV.	DATE	DESCRIPTION	BY

NO.	TYPE	SERVING			STATION/DIRECTION	FOR INFORMATION ONLY	
		LOT NO.	BLOCK NO.	LINE NO.		APPROXIMATE LENGTH 4" PIPE	VERTICAL
4	8"x4" TEE	20	3	3	1+02 RT.	16.0'	5.0'
5	4" MH STUB	17	3	3	2+56 LT.	13.0'	11.5'
6	8"x4" TEE	16	3	3	2+93 LT.	12.5'	11.0'
7	4" MH STUB	15	3	3	3+83 LT.	11.0'	8.0'

- Outside Drop Repair Notes:
- The existing 15 LF stub has been damaged and needs to be replaced. The Contractor shall replace all pipe back to the outside drop. The Contractor and Field Engineer shall inspect the tee at the drop, and, if it is not in good condition, replace the tee. All work associated with this repair is incidental to the bid item 'MH, Outside Drop Reconstructed, ea.'
 - The Contractor may either support or remove and replace the existing 48" storm sewer during construction activities. If the Contractor removes the storm sewer, it shall be replaced with pipe in good condition. Mortar and a concrete collar shall be installed if necessary. If the Contractor supports the sewer, they shall abide by all applicable safety requirements. Work is incidental to the bid item 'MH, Outside Drop Reconstructed, ea.'





© 2018 GARVER, LLC
 THIS DOCUMENT, ALONG WITH THE IDEAS AND DESIGNS CONVEYED HEREIN, SHALL BE CONSIDERED INSTRUMENTS OF PROFESSIONAL SERVICE AND ARE PROPERTY OF GARVER, LLC. ANY USE, REPRODUCTION, OR DISTRIBUTION OF THIS DOCUMENT, ALONG WITH THE IDEAS AND DESIGN CONTAINED HEREIN, IS PROHIBITED UNLESS AUTHORIZED IN WRITING BY GARVER, LLC OR EXPLICITLY ALLOWED IN THE GOVERNING PROFESSIONAL SERVICES AGREEMENT FOR THIS WORK.



REV.	DATE	DESCRIPTION	BY



CITY OF WICHITA
 WICHITA, KANSAS
 WHISPERING LAKES ADD. WICHITA
 PHASE 5 - SANITARY

Sanitary Sewer 3

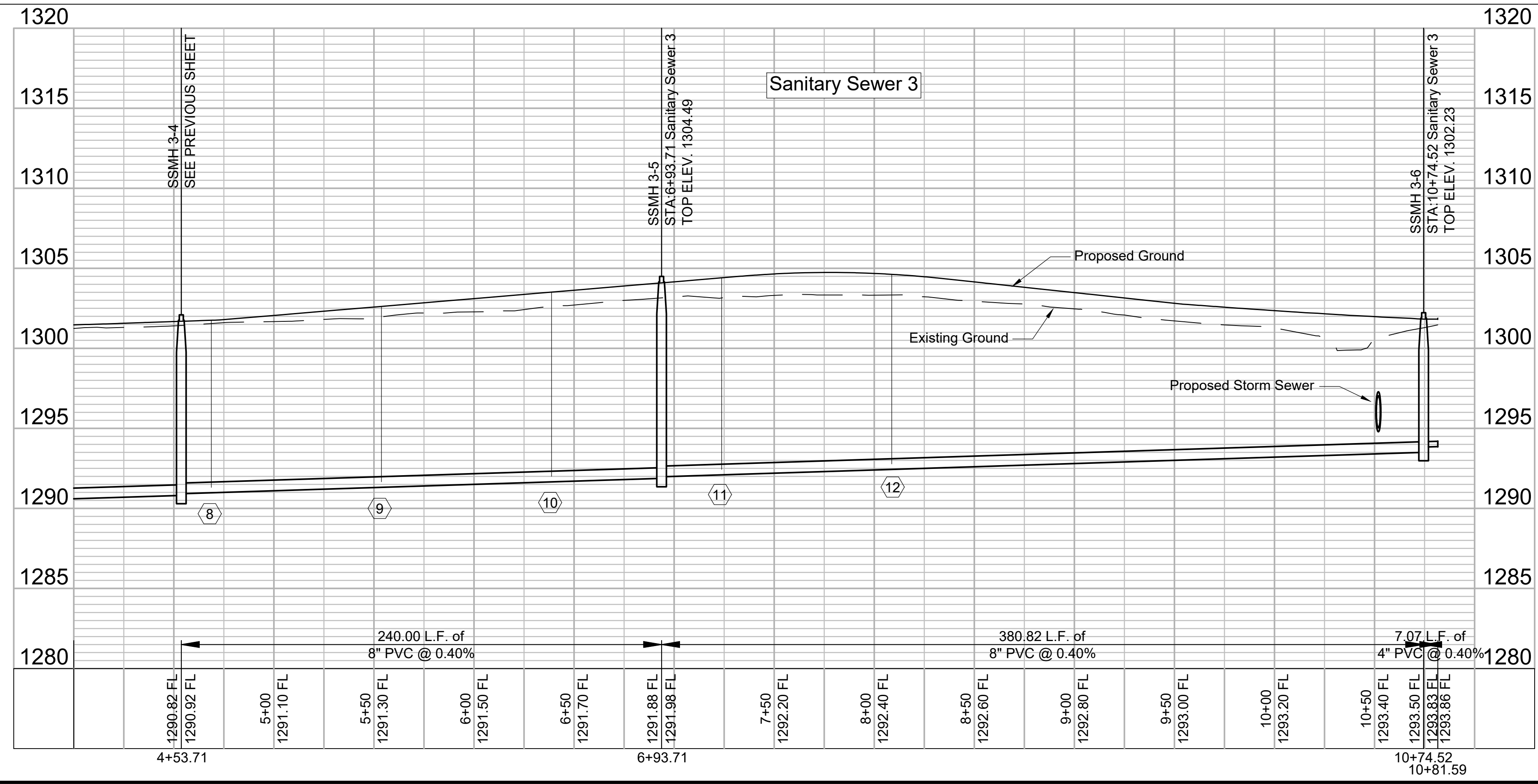
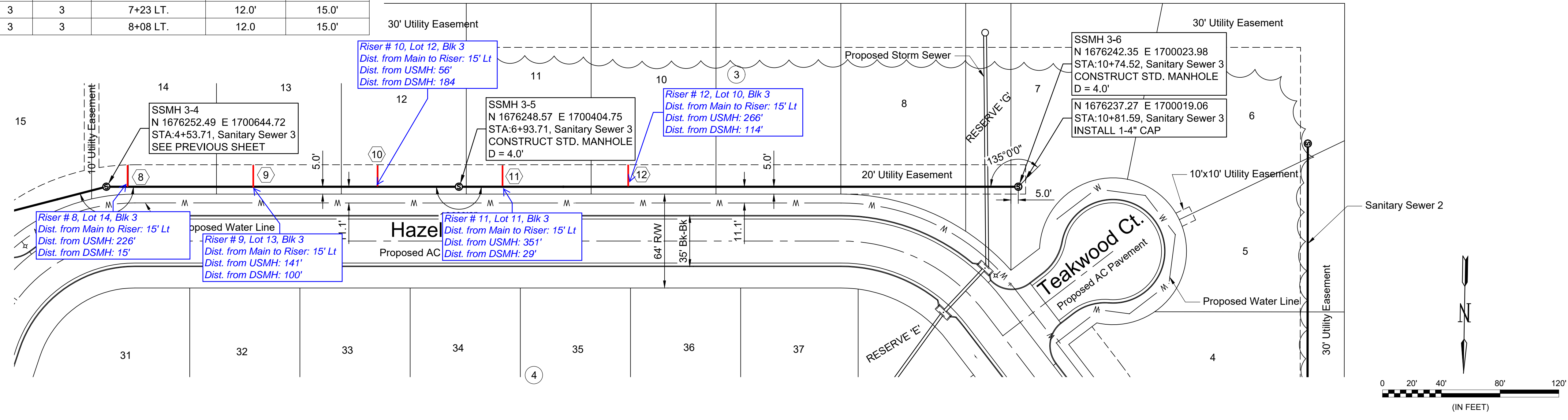
JOB NO.: 19T41011
 DATE: JUL 2019
 DESIGNED BY: KWL
 DRAWN BY: CDJ

BAR IS ONE INCH ON ORIGINAL DRAWING
 IF NOT ONE INCH ON THIS SHEET, ADJUST SCALES ACCORDINGLY.

DRAWING NUMBER

SHEET NUMBER **9** OF **17**

SEWER SERVICE TABLE					FOR INFORMATION ONLY		
NO.	TYPE	SERVING			STATION/DIRECTION	APPROXIMATE LENGTH 4" PIPE	
		LOT NO.	BLOCK NO.	LINE NO.		VERTICAL	HORIZONTAL
8	8"x4" TEE	14	3	3	4+68 LT.	10.5'	15.0'
9	8"x4" TEE	13	3	3	5+53 LT.	11.0'	15.0'
10	8"x4" TEE	12	3	3	6+38 LT.	11.5'	15.0'
11	8"x4" TEE	11	3	3	7+23 LT.	12.0'	15.0'
12	8"x4" TEE	10	3	3	8+08 LT.	12.0'	15.0'



File: L:\2019\19T41011 - Whispering Lakes Phase 5\Drawings\C3\Sanitary Sewer\08 - Sanitary Sewer 3.dwg Last Save: 8/13/2019 3:21 PM Last saved by: CDJurey
 Last plotted by: Jurey, Caleb D. Plot Date: 8/13/2019 4:22 PM Plotter used: None



© 2018 GARVER, LLC
 THIS DOCUMENT, ALONG WITH THE IDEAS AND DESIGNS CONVEYED HEREIN, SHALL BE CONSIDERED INSTRUMENTS OF PROFESSIONAL SERVICE AND ARE PROPERTY OF GARVER, LLC. ANY USE, REPRODUCTION, OR DISTRIBUTION OF THIS DOCUMENT, ALONG WITH THE IDEAS AND DESIGN CONTAINED HEREIN, IS PROHIBITED UNLESS AUTHORIZED IN WRITING BY GARVER, LLC OR EXPLICITLY ALLOWED IN THE GOVERNING PROFESSIONAL SERVICES AGREEMENT FOR THIS WORK.



REV.	DATE	DESCRIPTION	BY



CITY OF WICHITA
 WICHITA, KANSAS
 WHISPERING LAKES ADD. WICHITA
 PHASE 5 - SANITARY

Coordinate Map

JOB NO.: 19T41011
 DATE: JUL 2019
 DESIGNED BY: KWL
 DRAWN BY: CDJ

BAR IS ONE INCH ON ORIGINAL DRAWING
 IF NOT ONE INCH ON THIS SHEET, ADJUST SCALES ACCORDINGLY.

DRAWING NUMBER

SHEET NUMBER **10** OF **17**



File: L:\2019\19T41011 - Whispering Lakes Phase 5\Drawings\Sanitary Sewer\09 - Coordinate Points.dwg Last Save: 8/13/2019 4:40 PM Last saved by: CDJurey
 Last plotted by: Jurey, Caleb D. Plot Date: 8/14/2019 7:37 AM Plotter used: None
 Plot Style: --- Plot Scale: 1:2,584.9

File: L:\2019\19T41011 - Whispering Lakes Phase 5\Drawings\C3D\Sanitary Sewer\09 - Coordinate Points.dwg Last Save: 8/13/2019 3:22 PM Last saved by: CDJurey
 Last plotted by: Jurey, Caleb D. Plot Style: --- Plot Scale: 1:2,5849 Plot Date: 8/13/2019 4:23 PM Plotter used: None

Point Table			
Point #	Northing	Easting	Description
1	1677302.42	1700276.03	BENCHMARK #1
100	1676340.17	1702400.03	BLK CNR
101	1676690.13	1702394.31	BLK CNR
102	1676685.09	1702024.72	BLK CNR
103	1676767.52	1701899.19	BLK CNR
104	1676867.90	1701965.10	BLK CNR
105	1676905.63	1701906.53	BLK CNR
106	1676805.11	1701841.00	BLK CNR
107	1676735.11	1701734.44	BLK CNR
108	1676745.35	1701550.57	BLK CNR
109	1676743.51	1701482.59	BLK CNR
110	1676819.88	1701425.18	BLK CNR
111	1677017.50	1701515.11	BLK CNR
112	1677133.47	1701337.16	BLK CNR
113	1677132.01	1701244.67	BLK CNR
114	1677252.00	1701242.78	BLK CNR
115	1677243.51	1700706.20	PC
116	1677225.24	1700652.30	PT
117	1677199.45	1700617.49	BLK CNR
118	1676724.52	1700969.45	BLK CNR
119	1676795.97	1701065.87	BLK CNR
120	1676744.55	1701103.97	BLK CNR
121	1676673.10	1701007.56	BLK CNR
122	1676363.38	1701237.09	PC
123	1676322.53	1701319.88	PT
124	1676332.20	1701912.09	BLK CNR
125	1676487.18	1701909.56	BLK CNR
126	1676488.23	1701973.55	BLK CNR
127	1676333.25	1701976.08	BLK CNR
128	1676337.17	1702216.05	BLK CNR
129	1676492.15	1702213.52	BLK CNR
130	1676493.19	1702277.51	BLK CNR
131	1676338.21	1702280.04	BLK CNR
132	1676258.98	1701305.89	BLK CNR
133	1676258.54	1701320.93	PT
134	1676276.17	1702400.69	BLK CNR
135	1676156.19	1702402.65	BLK CNR
136	1676138.05	1701292.23	BLK CNR
137	1676150.29	1701292.03	PC
138	1676656.01	1699925.71	BLK CNR
139	1676486.03	1699928.27	PC
140	1676374.15	1699968.22	PT
141	1676349.29	1699987.95	BLK CNR
142	1676334.29	1699969.05	BLK CNR
143	1676284.16	1700008.84	BLK CNR
144	1676299.41	1700028.05	BLK CNR
145	1676249.32	1700144.70	PT
146	1676257.17	1700625.28	PC
147	1676288.40	1700708.40	BLK CNR
148	1676260.01	1700798.99	PT

Point Table			
Point #	Northing	Easting	Description
149	1676260.44	1700825.16	BLK CNR
150	1676324.43	1700824.11	BLK CNR
151	1676324.00	1700797.95	PC
152	1676340.35	1700745.77	BLK CNR
153	1676349.37	1700748.98	PT
154	1676500.88	1700796.88	PC
155	1676535.02	1700821.23	PT
156	1676634.99	1700956.14	BLK CNR
157	1676325.27	1701185.67	PC
158	1676276.05	1701244.21	BLK CNR
159	1676149.24	1701228.04	PT
160	1676137.01	1701228.24	BLK CNR
161	1676113.74	1699803.86	BLK CNR
162	1676654.05	1699795.73	BLK CNR
163	1676374.98	1700049.26	BLK CNR
164	1676413.94	1700018.35	PC
165	1676486.99	1699992.26	PT
166	1676656.97	1699989.70	BLK CNR
167	1676659.68	1700169.68	BLK CNR
168	1676723.68	1700168.72	BLK CNR
169	1676720.97	1699988.74	BLK CNR
170	1677041.44	1699983.91	PC
171	1677151.29	1700054.55	PT
172	1677295.43	1700383.52	PC
173	1677267.87	1700487.13	PT
174	1676930.65	1700737.03	BLK CNR
175	1676859.20	1700640.62	BLK CNR
176	1676807.79	1700678.73	BLK CNR
177	1676879.23	1700775.14	BLK CNR
178	1676686.41	1700918.03	BLK CNR
179	1676586.43	1700783.13	PC
180	1676520.17	1700735.86	PT
181	1676368.66	1700687.96	PC
182	1676321.17	1700624.23	PT
183	1676313.32	1700143.66	PC
184	1676347.74	1700070.89	PT
185	1676720.00	1699924.75	BLK CNR
186	1677040.47	1699919.92	PC
187	1677131.39	1699942.69	BLK CNR
188	1677158.14	1699915.86	PC
189	1677228.95	1699986.48	PT
190	1677202.19	1700013.30	BLK CNR
191	1677209.91	1700028.86	PT
192	1677354.05	1700357.84	PC
193	1677305.97	1700538.55	PT
194	1677250.87	1700579.39	BLK CNR
195	1677276.66	1700614.19	PC
196	1677307.50	1700705.18	PT
197	1677316.24	1701257.77	BLK CNR
198	1677436.23	1701255.87	BLK CNR

Point Table			
Point #	Northing	Easting	Description
199	1677426.03	1700611.38	BLK CNR
200	1677630.33	1700459.98	BLK CNR
201	1677633.50	1700259.26	BLK CNR
202	1677506.58	1700287.38	BLK CNR
203	1677482.55	1700234.69	PT
204	1677455.75	1700198.53	BLK CNR
205	1677552.16	1700127.09	BLK CNR
206	1677446.12	1699983.99	BLK CNR
207	1677442.95	1699783.85	BLK CNR
208	1676718.05	1699794.76	BLK CNR
600	1676544.06	1700106.60	0+00 SSMH 1-0
601	1676487.02	1700107.28	0+57 SSMH 1-1
602	1676428.50	1700153.72	1+31 SSMH 1-2
603	1676432.03	1700369.94	3+48 SSMH 1-3
604	1676435.60	1700588.51	5+66 SSMH 1-4
605	1676551.55	1700625.17	6+88 SSMH 1-5
606	1676558.90	1699822.15	0+00 SSMH 2-0
607	1676208.90	1699827.92	3+50 SSMH 2-1
608	1676474.18	1700931.61	0+00 SSMH 3-0
609	1676459.08	1700911.69	0+15 CONNECT
610	1676451.69	1700901.94	0+37 SSMH 3-1
611	1676242.31	1700835.75	2+56 SSMH 3-2
612	1676271.15	1700712.36	3+83 SSMH 3-3
613	1676252.49	1700644.72	4+53 SSMH 3-4
614	1676248.57	1700404.75	6+93 SSMH 3-5
615	1676242.35	1700023.98	10+74 SSMH 3-6



© 2018 GARVER, LLC
 THIS DOCUMENT, ALONG WITH THE
 IDEAS AND DESIGNS CONVEYED
 HEREIN, SHALL BE CONSIDERED
 INSTRUMENTS OF PROFESSIONAL
 SERVICE AND ARE PROPERTY OF
 GARVER, LLC. ANY USE,
 REPRODUCTION, OR DISTRIBUTION
 OF THIS DOCUMENT, ALONG WITH
 THE IDEAS AND DESIGN CONTAINED
 HEREIN, IS PROHIBITED UNLESS
 AUTHORIZED IN WRITING BY
 GARVER, LLC OR EXPLICITLY
 ALLOWED IN THE GOVERNING
 PROFESSIONAL SERVICES
 AGREEMENT FOR THIS WORK.



REV.	DATE	DESCRIPTION	BY



CITY OF WICHITA
 WICHITA, KANSAS
 WHISPERING LAKES ADD. WICHITA
 PHASE 5 - SANITARY

Point Tables

JOB NO.: 19T41011
 DATE: JUL 2019
 DESIGNED BY: KWL
 DRAWN BY: CDJ

BAR IS ONE INCH ON ORIGINAL DRAWING
 IF NOT ONE INCH ON THIS SHEET, ADJUST SCALES ACCORDINGLY.

DRAWING NUMBER
