

# GENERAL NOTES:

1. Contractor will be required to provide notice to utility companies a minimum of seventy-two (72) hours prior to any excavation, as follows:

Kansas One-Call 687-2470

The Contractor must notify the following in case of an emergency:

Cox Communications 262-4270  
 Kansas Gas Service 1-888-482-4950  
 Westar Energy 383-8650  
 Aquila Energy 1-800-303-0357  
 AT&T 268-2245  
 City of Wichita Water Dept. 268-4563  
 City of Wichita Sewer Maint. 268-4024  
 City of Wichita Storm Sewer Maint. 268-4090  
 City of Wichita Traffic Maint. 268-4034  
 Conoco Phillips Pipeline Co. 1-877-267-2290  
 Southern Star Pipeline Co. 529-6600  
 Kinder-Morgan Pipeline Co. 1-888-844-5658

2. Utility service lines, poles, valve boxes, meters, and etcetera are to be adjusted as necessary by others prior to construction unless the plans specifically call for their adjustment by the Contractor or unless the plans specifically identify a utility to be adjusted by its owner during construction. Existing utilities and their location, as shown on the plans, represent the best information obtainable for design. The Contractor will be required to work around existing utilities within the right-of-way which do not conflict with proposed construction.

3. Rubble from the removal of miscellaneous structures and excess excavation which is to be wasted shall be disposed of on sites to be provided by the Contractor. These sites shall be approved by the Engineer as to suitability, appearance and site location. Locations, in the opinion of the Engineer, that will leave an unsightly appearance will not be approved. All disposal sites must be approved by the Kansas Department of Health and Environment. Material either stockpiled or disposed of in a flood plain would require a Kansas State Board of Agriculture permit. Any material dumped in waters of the United States or wetlands is subject to U.S. Corps. of Engineers permitting regulations. Any material buried or stockpiled beyond approved construction limits would require additional archaeological investigations unless buried in a previously approved borrow location.

4. Trees and shrubs in public right-of-way which are in direct conflict with proposed new construction shall be removed by the Contractor with the Engineer's approval. Trees and shrubs which are not in direct conflict with proposed new construction shall be saved and protected from damage.

5. The Contractor shall give all property owners and/or tenants of developed property abutting the construction of this project a minimum of ten (10) days notice prior to start of construction.

6. The Contractor shall be responsible for preserving property irons. The Contractor will be required to re-establish any property irons which are damaged or destroyed by his construction operations. Such irons shall be re-established by a licensed land surveyor in accordance with state laws.

7. All existing and proposed erosion control measures including silt fencing, erosion control mat, straw bales, inlet barriers, and const. entrance shall be maintained throughout construction by the contractor until project is accepted by the City of Wichita. The on-site engineer shall complete weekly reports on the status of erosion control measures. The contractor shall be required to comply with maintenance and/or replacement of erosion control measures as determined by the on-site engineer until project is accepted by City of Wichita. Maintenance and/or replacement of erosion control measures to be paid by measured quantity of each BMP item.

8. All excess excavation shall remain on-site and shall be stockpiled or spread at a location determined by the engineer.

9. The Contractor shall be responsible for maintaining continuous flow of sewage through construction. Contractor's proposed method for maintaining sewage flow shall be approved by the Engineer. Cost of maintaining flow of sewage through construction will not be paid for directly and this cost shall be considered as subsidiary to the other pay items of work.

10. All areas disturbed during construction shall be seeded as follows (Temporary Seeding):

Seed: Rye grass (PLS)--5 lbs./1000 Sq. Ft.

All costs associated with seeding shall be included in bid item "Seeding". All seeding operations shall conform to City of Wichita Standard Specifications.

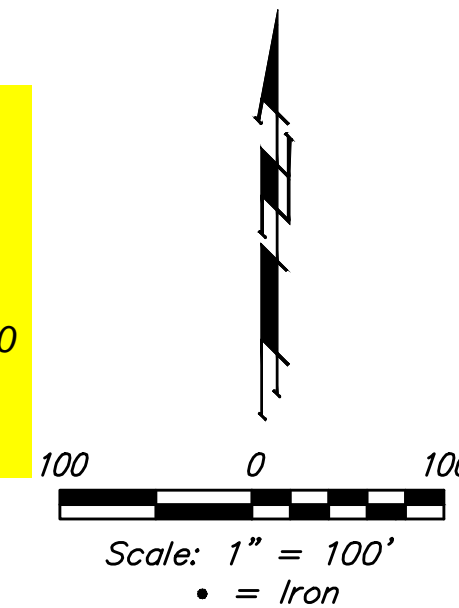
12. Trees and shrubs in the work area which are in direct conflict with proposed new construction shall be removed by the Contractor ONLY with the Developer or Baughman Company approval. Trees and shrubs which are not in direct conflict with proposed new construction shall be saved and protected from damage. If trimming is necessary, a chainsaw shall be used. Breaking limbs with equipment will not be allowed. An on-site pre-construction meeting will occur prior to any construction to discuss tree removal, tree protection, and tree trimming.

13. The Developer for this project is Kevin Mullen 8100 E 22nd St N, Bldg 1000, Wichita, KS 67226 PH# (316) 684-7300 Email Kevin@ritchiedevelopment.com

# SANITARY SEWER IMPROVEMENTS to serve THE RANCH 2ND ADDITION CITY OF WICHITA, KANSAS

Gary Janzen, P.E. City Engineer  
 Project Number  
 468-2019-015115 OCA Number

McCullough - Contractor  
 K. Yale - City of Wichita, Field Project Engineer  
 R. Skilling - City of Wichita, Inspector  
 As-built  
 Stubs & Risers  
 Release Date (for connection purposes only): 1/9/2020  
 Completion Date:  
 pdf: 9/29/2020 apr



## SHEET INDEX

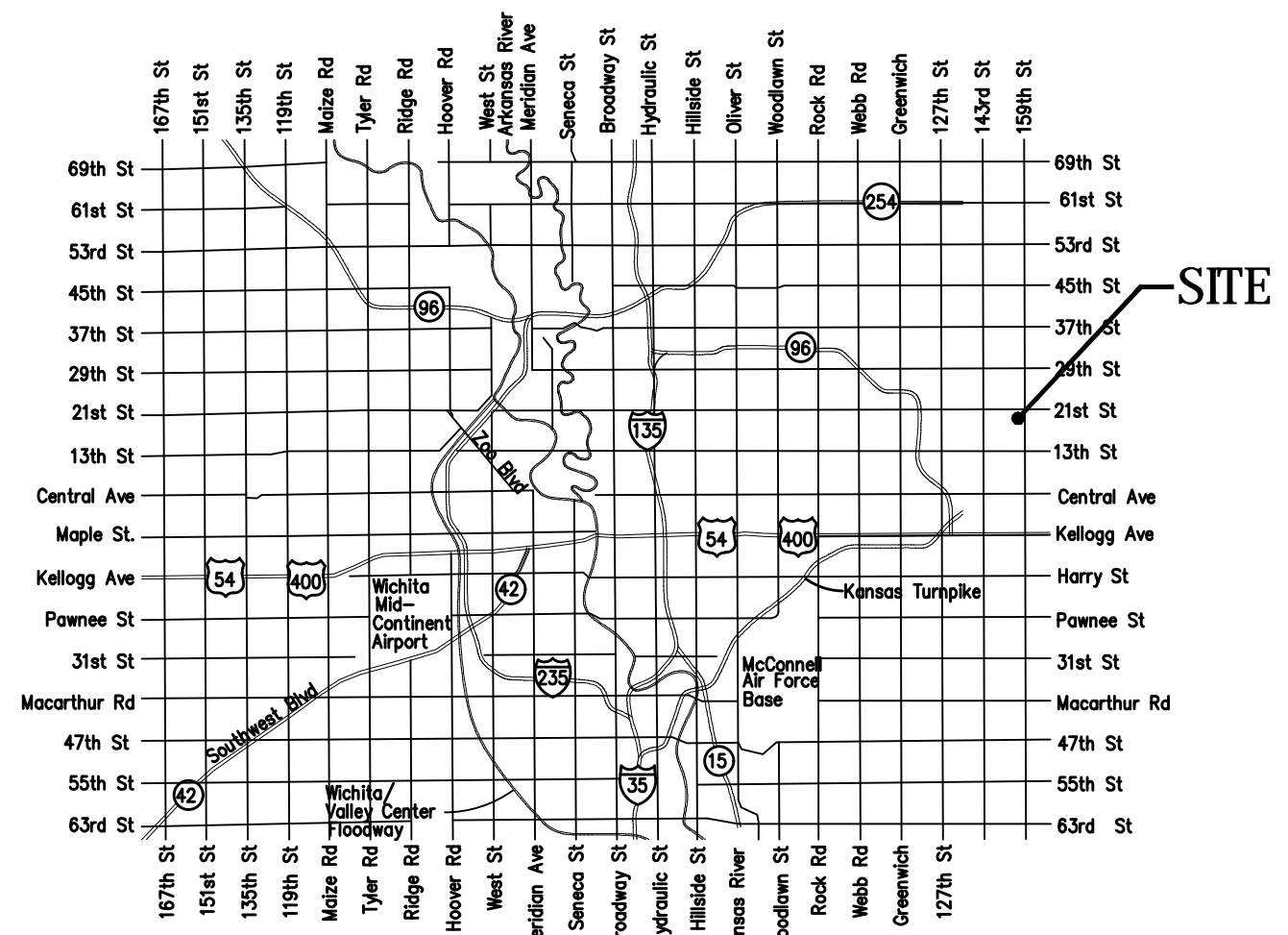
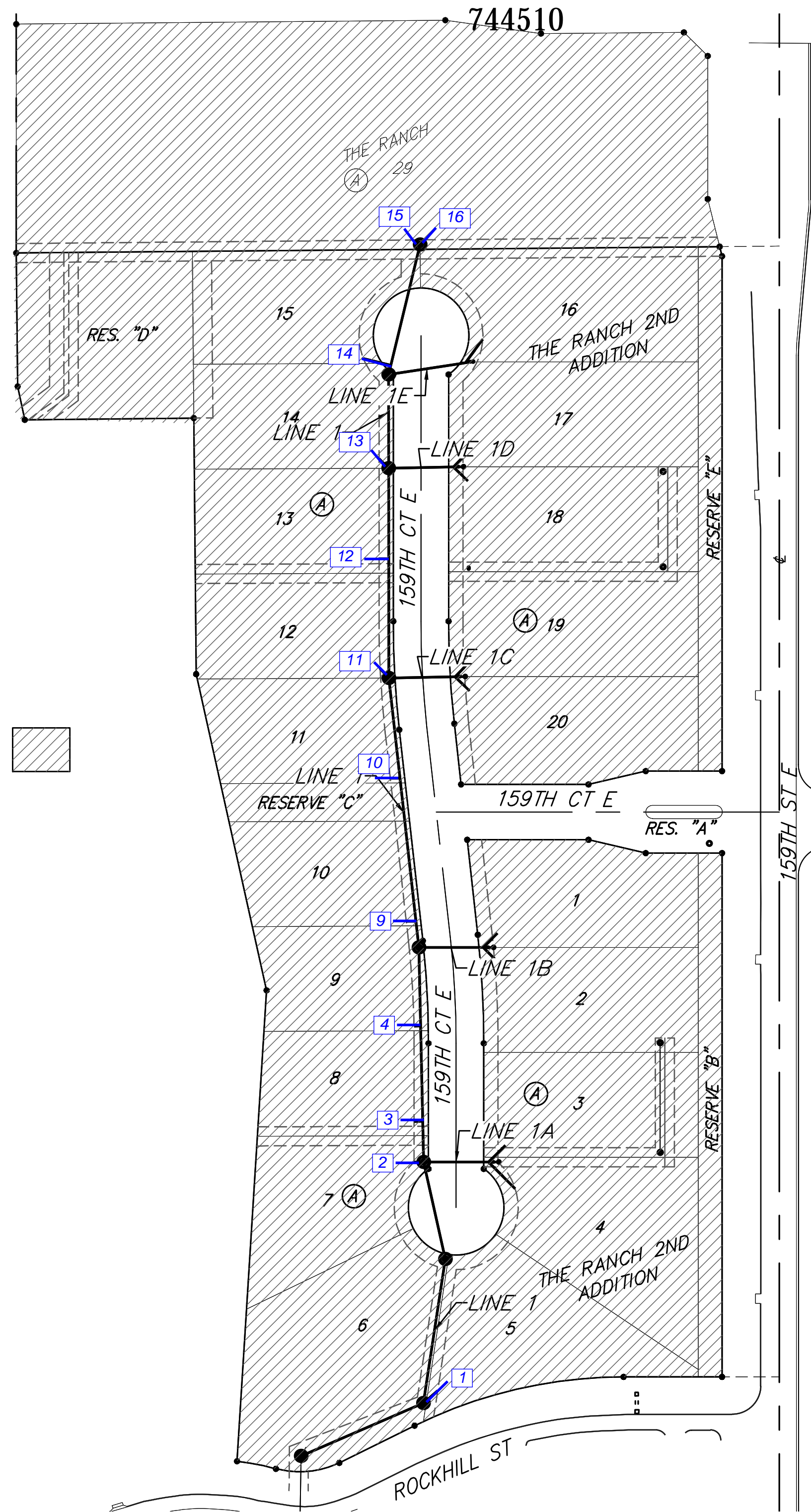
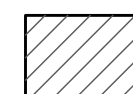
Title Sheet	1
Line 1, Line 1A, & Line 1B	2
Line 1	3
Line 1C, Line 1D, & Line 1E	4
Erosion Control Plan	5
Erosion Control BMP Details	6-10
Standard Manhole Detail	11
Ring & Cover Detail	12
Vertical Riser Detail	13
Cleanout Detail	14
Coordinate Sheet	15
Copy of Plat	16

## BENCHMARKS

#1: "X" CUT CHISELED ON CURB INLET, 8.9' S. & 27.5' W. OF THE NW COR., LOT 22, BLOCK 1, QUAIL CROSSING ADDITION, PHASE 2. 22.3' EAST OF @ N. 159TH ST. E. ELEV. = 1370.15 (NAVD88)

#2: "X" CUT CHISELED ON CURB INLET, 13.2' S. & 60.1' E. OF THE NE COR., LOT 2, BLOCK A, THE RANCH 2ND ADDITION. 24.9' WEST OF @ N. 159TH ST. E. ELEV. = 1369.05 (NAVD88)

## BENEFIT DISTRICT



VICINITY MAP



Baughman Company, P.A. 315 Ellis St. Wichita, KS 67211 P 316-262-7271 F 316-262-0148  
 ENGINEERING | SURVEYING | PLANNING | LANDSCAPE ARCHITECTURE



**BENCHMARKS:**  
 #1: "X" CUT CHISELED ON CURB INLET,  
 8.9' S. & 27.5' W. OF THE NW COR., LOT  
 22, BLOCK 1, QUAIL CROSSING ADDITION,  
 PHASE 2, 22.3' EAST OF C.N. 159TH ST. E.  
 ELEV. = 1370.15 (NAVD88)

#2: "X" CUT CHISELED ON CURB INLET,  
 13.2' S. & 60.1' E. OF THE NE COR., LOT  
 2, BLOCK A, THE RANCH 2ND ADDITION,  
 24.9' WEST OF C.N. 159TH ST. E.  
 ELEV. = 1369.05 (NAVD88)

**SEE REVISED SHEET**

Sta. 0+00.0, Line 1  
 Construct Outside Drop for  
 Existing Manhole, Extending Pipe  
 Northeast. Core New Openings,  
 Seal and Grout Around New Pipe  
 Using Non-Shrink Grout. Re-  
 Shape Invert As Necessary. Cost  
 of Coring, Sealing, Grouting, and  
 Re-Shaping Invert to be incidental  
 to Cost of Pipe.  
 Top Elev. = 1359.90

Remove/Replace berms only as  
 necessary for construction.

Sta. 1+39.7, Line 1  
 Const. Std. Manhole (5' Dia.)  
 1-4" Stub w/Riser (NE)  
 Top Elev. = 1361.30

Sta. 2+92.5, Line 1  
 Const. Std. Manhole (5' Dia.)  
 Top Elev. = 1369.00

Sta. 3+96.6, Line 1 =  
 Sta. 0+00, Begin Line 1A  
 Const. Std. Manhole (5' Dia.)  
 1-4" Stub w/Riser (W)  
 Top Elev. = 1368.00

Sta. 6+21.7, Line 1 =  
 Sta. 0+00, Begin Line 1B  
 Const. Std. Manhole (5' Dia.)  
 Top Elev. = 1368.90  
 Match Point

Sta. 0+68.0, Line 1A  
 Const. Std. 8" Cleanout  
 (Double Wye) Assy. w/Risers  
 (SE & NE)  
 Top Elev. = 1368.00

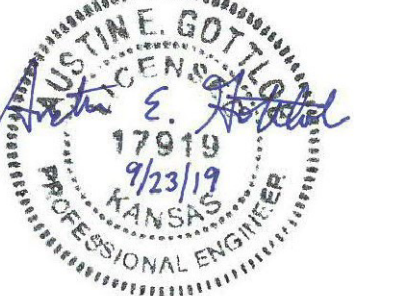
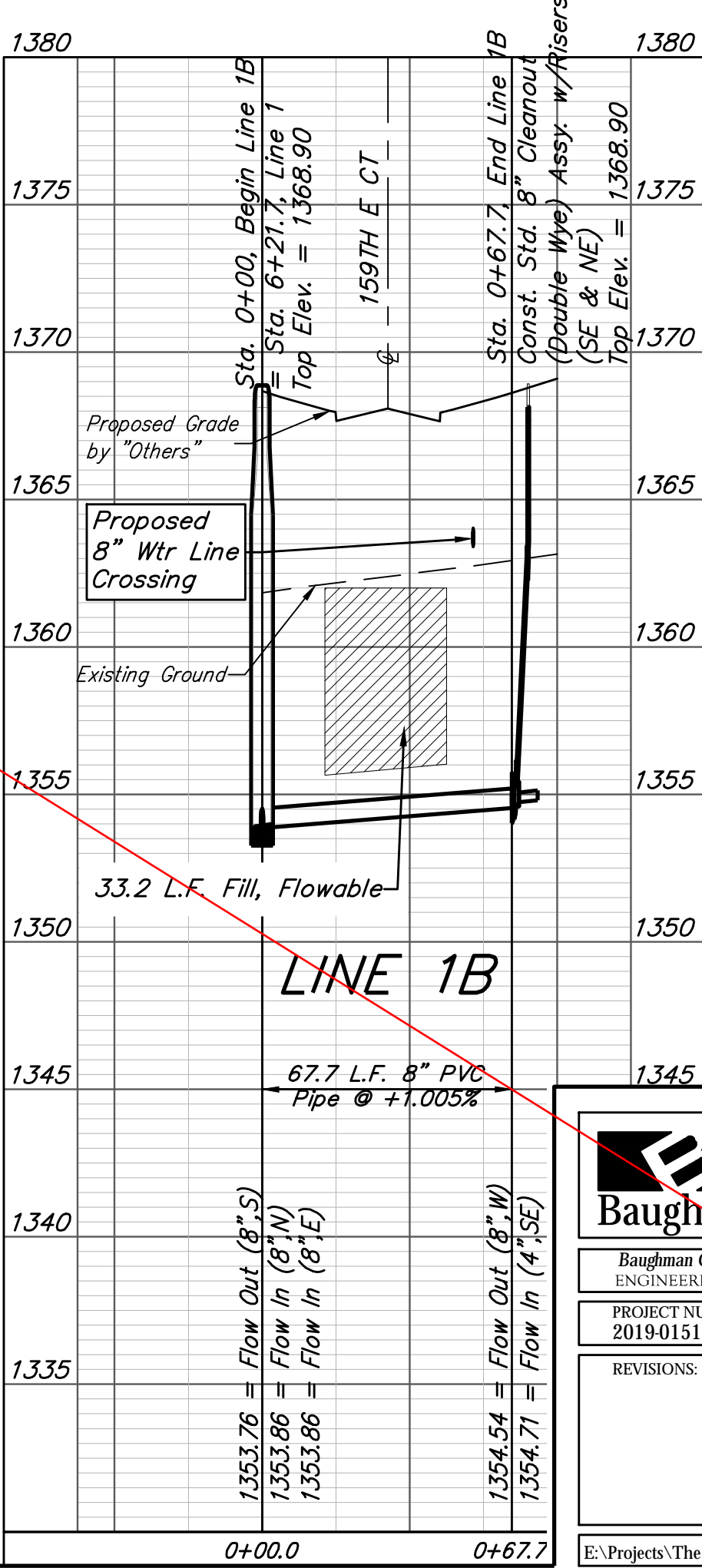
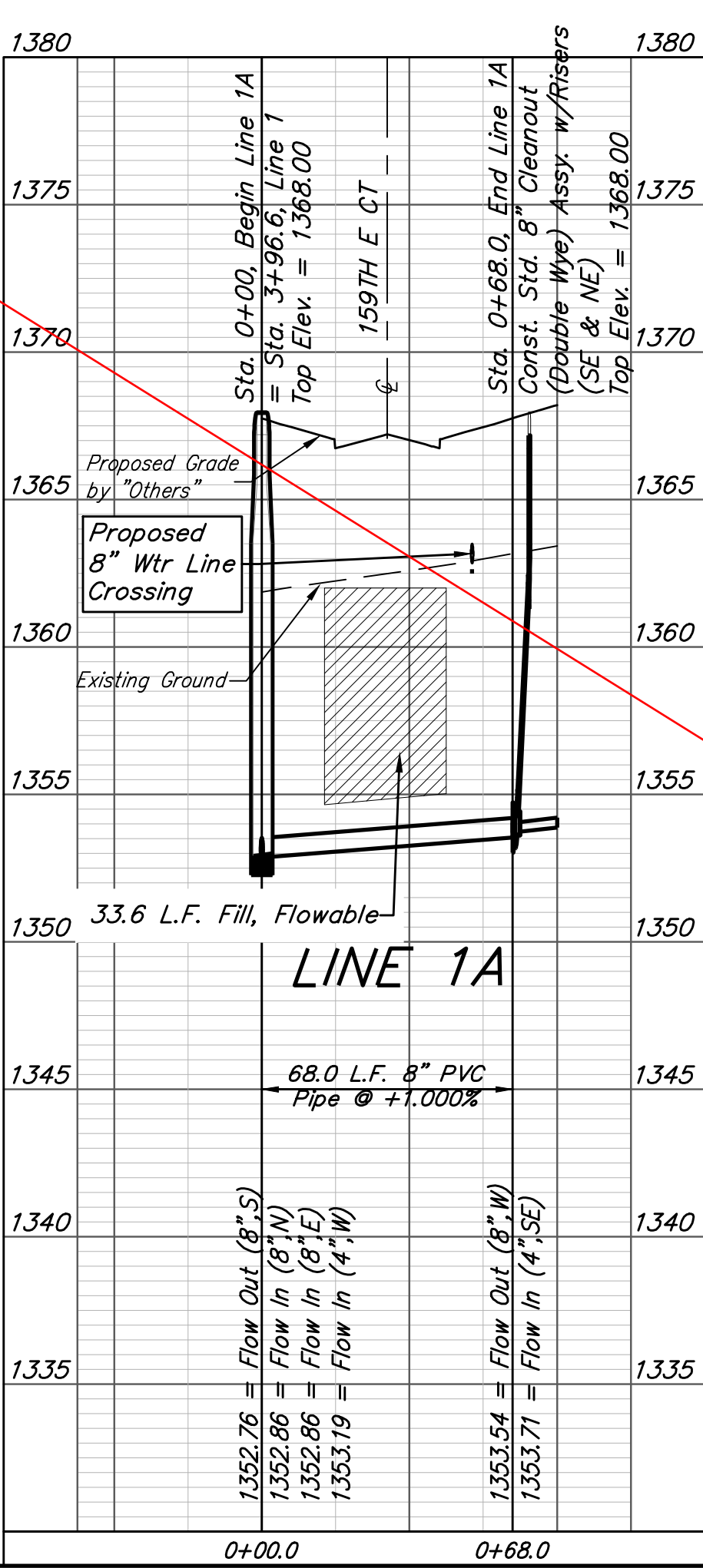
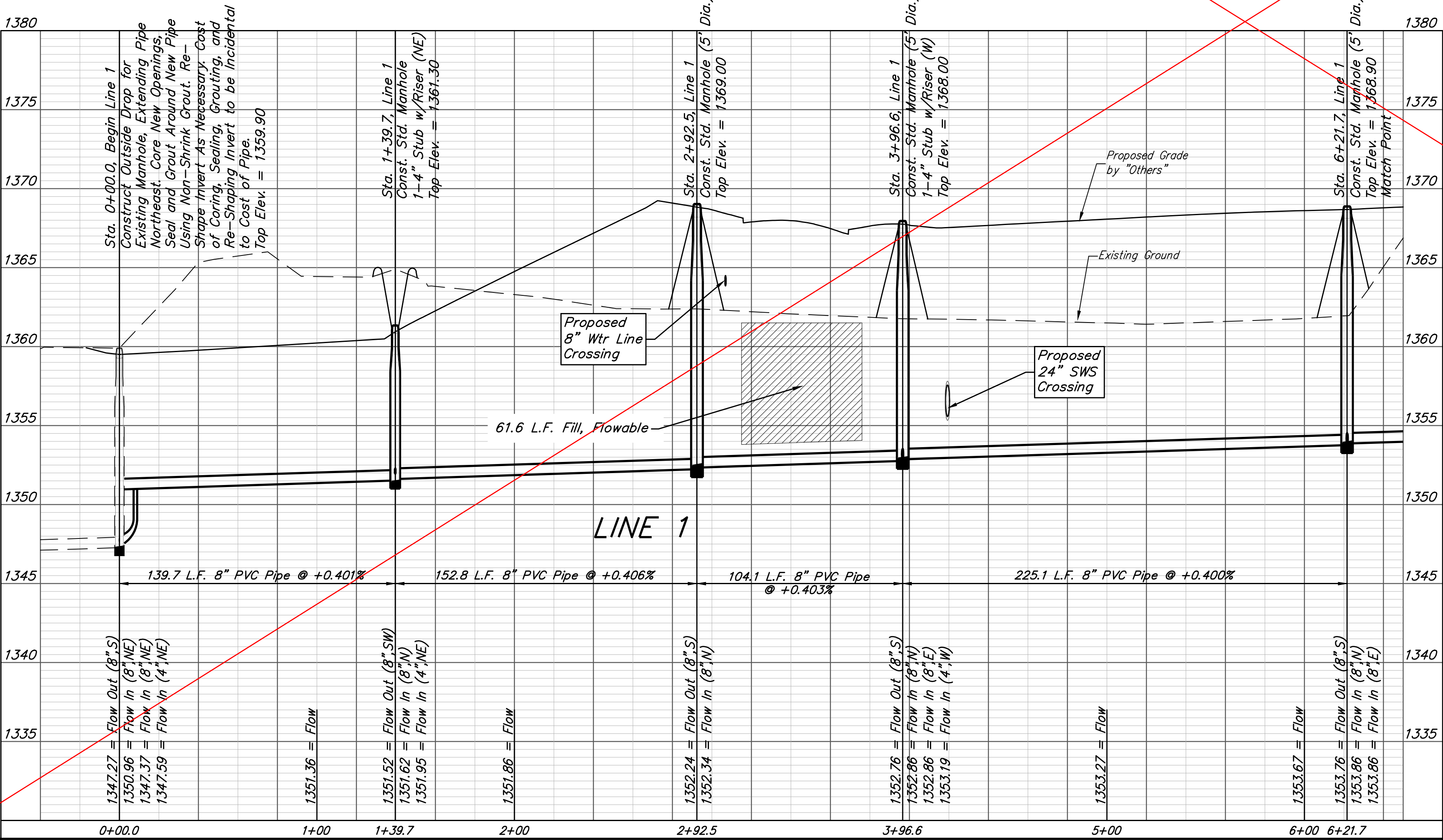
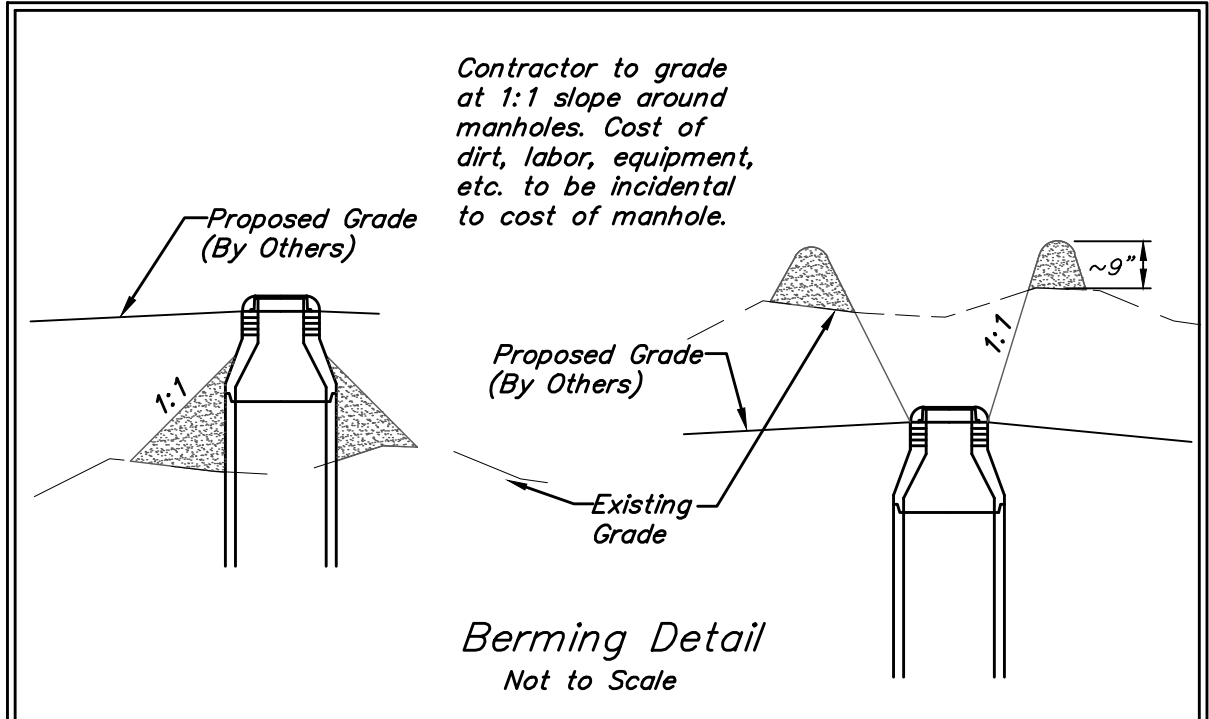
Sta. 0+67.7, Line 1B  
 Const. Std. 8" Cleanout  
 (Double Wye) Assy. w/Risers  
 (SE & NE)  
 Top Elev. = 1368.90

Existing trees which are in direct conflict with proposed  
 new construction shall be removed by the Contractor  
 ONLY with approval of the Engineer. Trees not in  
 direct conflict with proposed new construction shall  
 remain and be protected from damage. Cost shall be  
 included in bid item "Site Clearing"

All trench and manhole excavation areas from Sta.  
 2+95.9 to Sta. 13+64.5, Line 1, excluding 121.9 L.F.  
 Flowable Fill, shall be backfilled with sand. The sand  
 backfill shall be within two feet of existing grade and  
 shall be water-jetted and vibrated during backfilling. All  
 costs shall be paid for as L.F. "Fill, Sand (Flushed &  
 Vibrated)".

SEWER SERVICE TABLE

NUMBER	TYPE	LOCATION			FOR INFORMATION ONLY	
		LOT NO.	BLOCK NO.	LINE NO.	STATION/ DIRECTION	APPROXIMATE LENGTH 4" PIPE
1	4" Stub	5	A	1	1+39.7/Rt.	4.2'
2	4" Stub	7	A	1	3+96.6/Lt.	11.7'
3	8" X 4" Tee	8	A	1	4+39.4/Lt.	9.9'
4	8" X 4" Tee	9	A	1	5+39.4/Lt.	9.5'
5	Cleanout	4	A	1A	0+68.0/Rt.	9.2'
6	Cleanout	3	A	1A	0+68.0/Lt.	9.2'
7	Cleanout	2	A	1B	0+67.7/Rt.	9.1'
8	Cleanout	1	A	1B	0+67.7/Lt.	9.3'



**Baughman** The Ranch 2nd Addition  
**LINE 1, 1A, & 1B**  
 Sanitary Sewer Improvements

Baughman Company, P.A. 315 Ellis St. Wichita, KS 67211 P 316-262-7271 F 316-262-0149  
 ENGINEERING | SURVEYING | PLANNING | LANDSCAPE ARCHITECTURE

PROJECT NUMBER  
 2019-015115

DESIGN  
 AEG

DRAWN  
 HW

APPROVED  
 DATE  
 09/23/19

REVISIONS:

SCALE  
 Noted

SHEET  
**2 OF 16**

E:\Projects\The Ranch 2nd\_1904-P447\Engineering\Phase 1\SS\SS PLANS.dwg

**BENCHMARKS:**  
 #1: "X" CUT CHISELED ON CURB INLET, 8.9' S. & 27.5' W. OF THE NW COR., LOT 22, BLOCK 1, QUAIL CROSSING ADDITION, PHASE 2, 22.3' EAST OF C.N. 159TH ST. E. ELEV. = 1370.15 (NAVD88)

#2: "X" CUT CHISELED ON CURB INLET, 13.2' S. & 60.1' E. OF THE NE COR., LOT 2, BLOCK A, THE RANCH 2ND ADDITION, 24.9' WEST OF C.N. 159TH ST. E. ELEV. = 1369.05 (NAVD88)

Sta. 0+00.0, Line 1  
 Construct Outside Drop for Existing Manhole, Extending Pipe Northeast. Core New Openings, Seal and Grout Around New Pipe Using Non-Shrink Grout. Re-Shape Invert As Necessary. Cost of Coring, Sealing, Grouting, and Re-Shaping Invert to be incidental to Cost of Pipe.  
 Top Elev. = 1359.90

Remove/Replace berms only as necessary for construction.

Sta. 1+39.7, Line 1  
 Const. Std. Manhole (5' Dia.)  
 1-4" Stub w/Riser (NE)  
 Top Elev. = 1365.00

Sta. 2+92.5, Line 1  
 Const. Std. Manhole (5' Dia.)  
 Top Elev. = 1369.00

Sta. 3+96.6, Line 1 =  
 Sta. 0+00, Begin Line 1A  
 Const. Std. Manhole (5' Dia.)  
 1-4" Stub w/Riser (W)  
 Top Elev. = 1367.90

Sta. 6+21.7, Line 1 =  
 Sta. 0+00, Begin Line 1B  
 Const. Std. Manhole (5' Dia.)  
 Top Elev. = 1368.90  
 Match Point

Sta. 0+68.0, Line 1A  
 Const. Std. 8" Cleanout (Double Wye) Assy. w/Risers (SE & NE)  
 Top Elev. = 1368.00

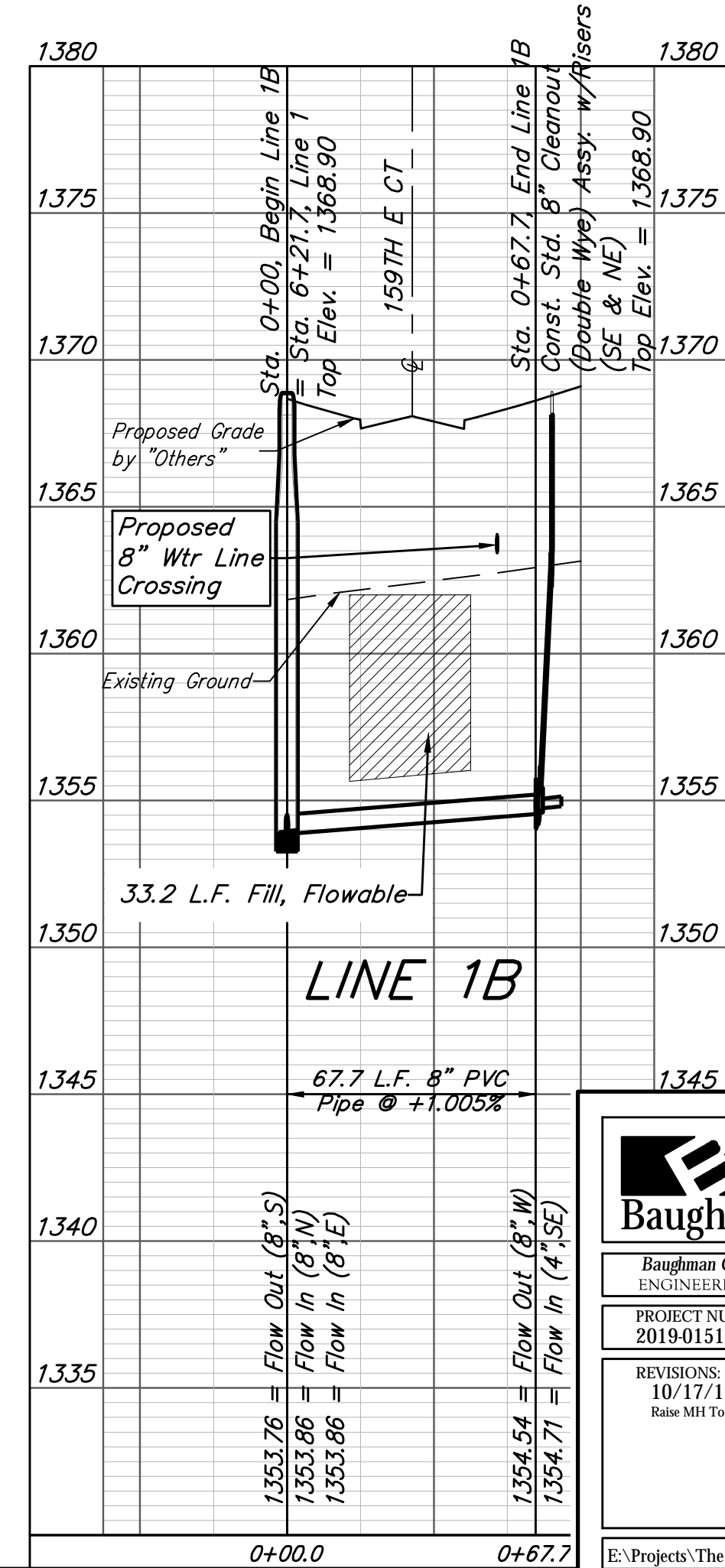
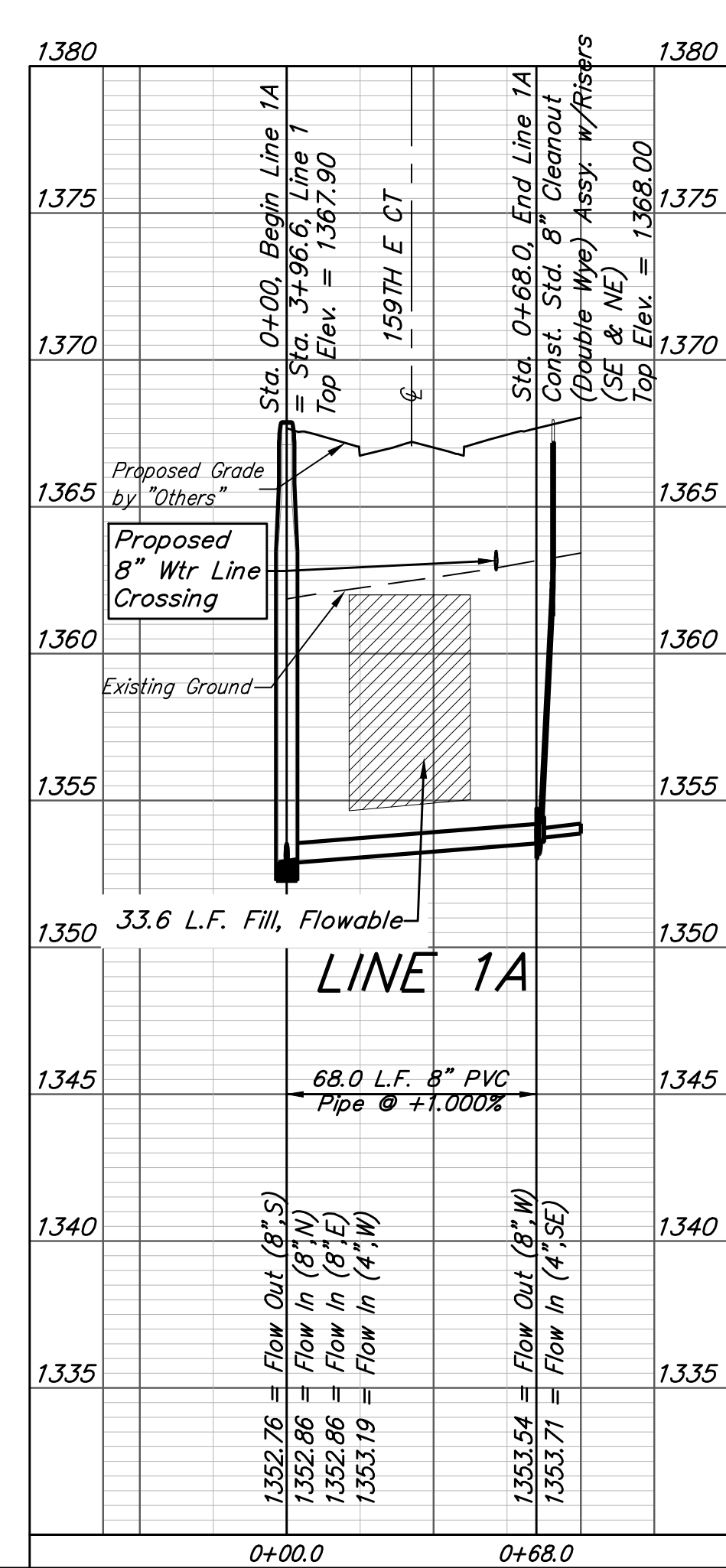
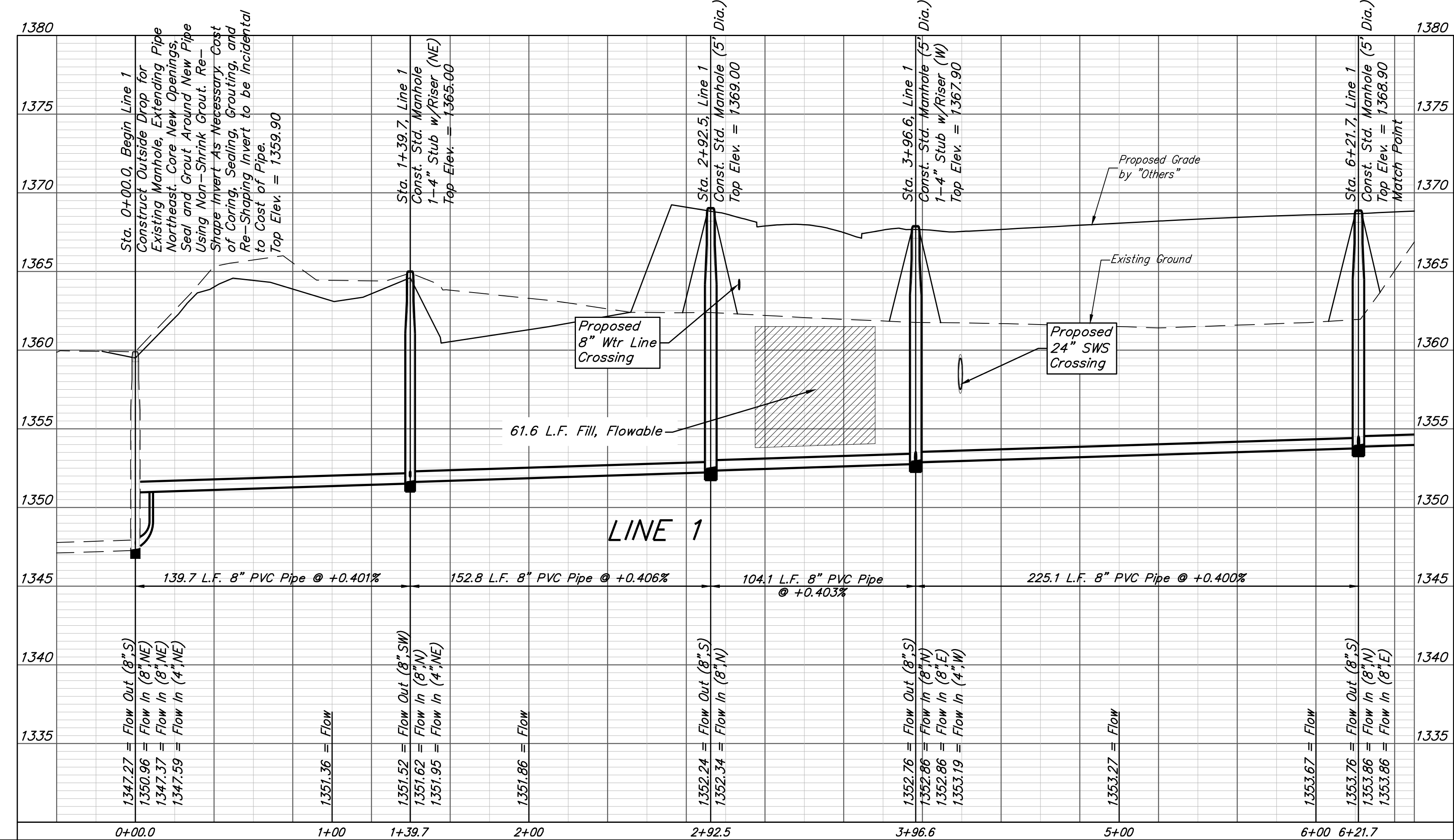
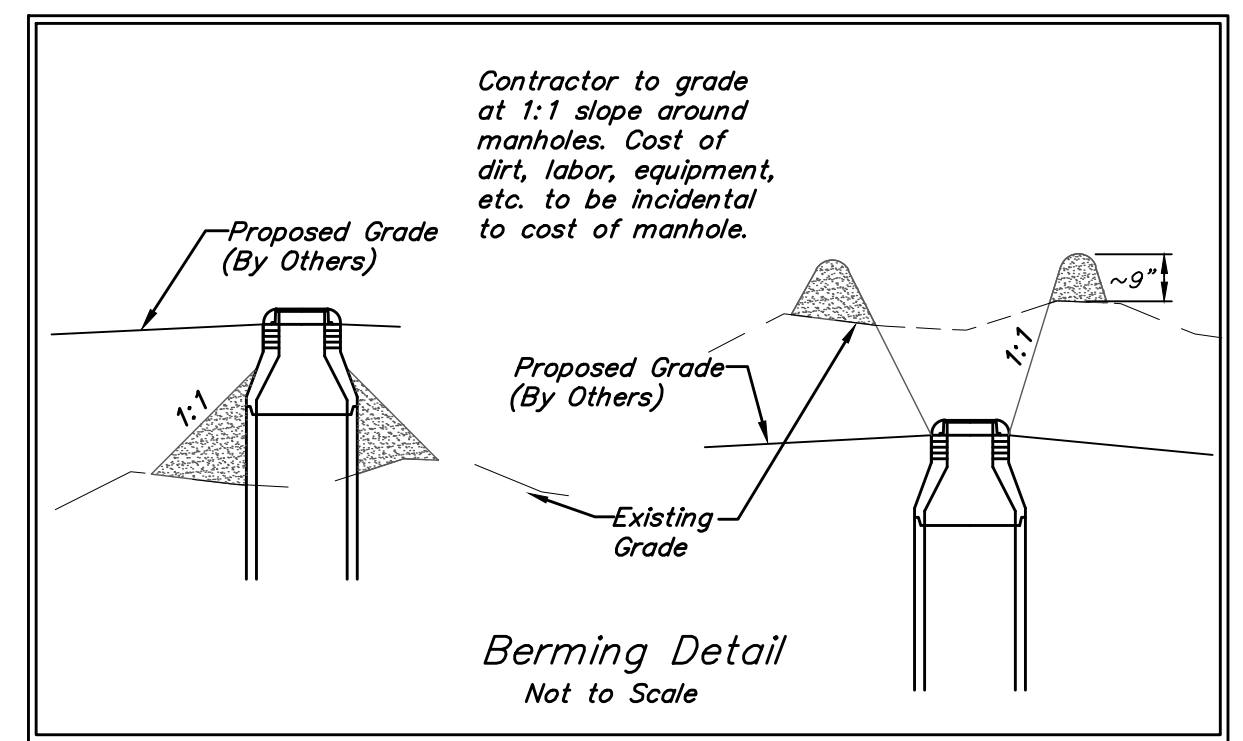
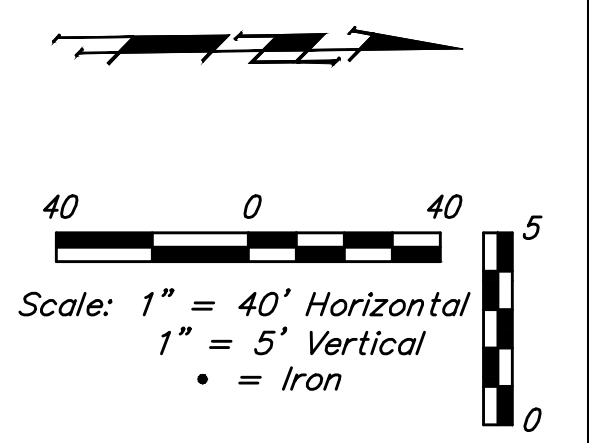
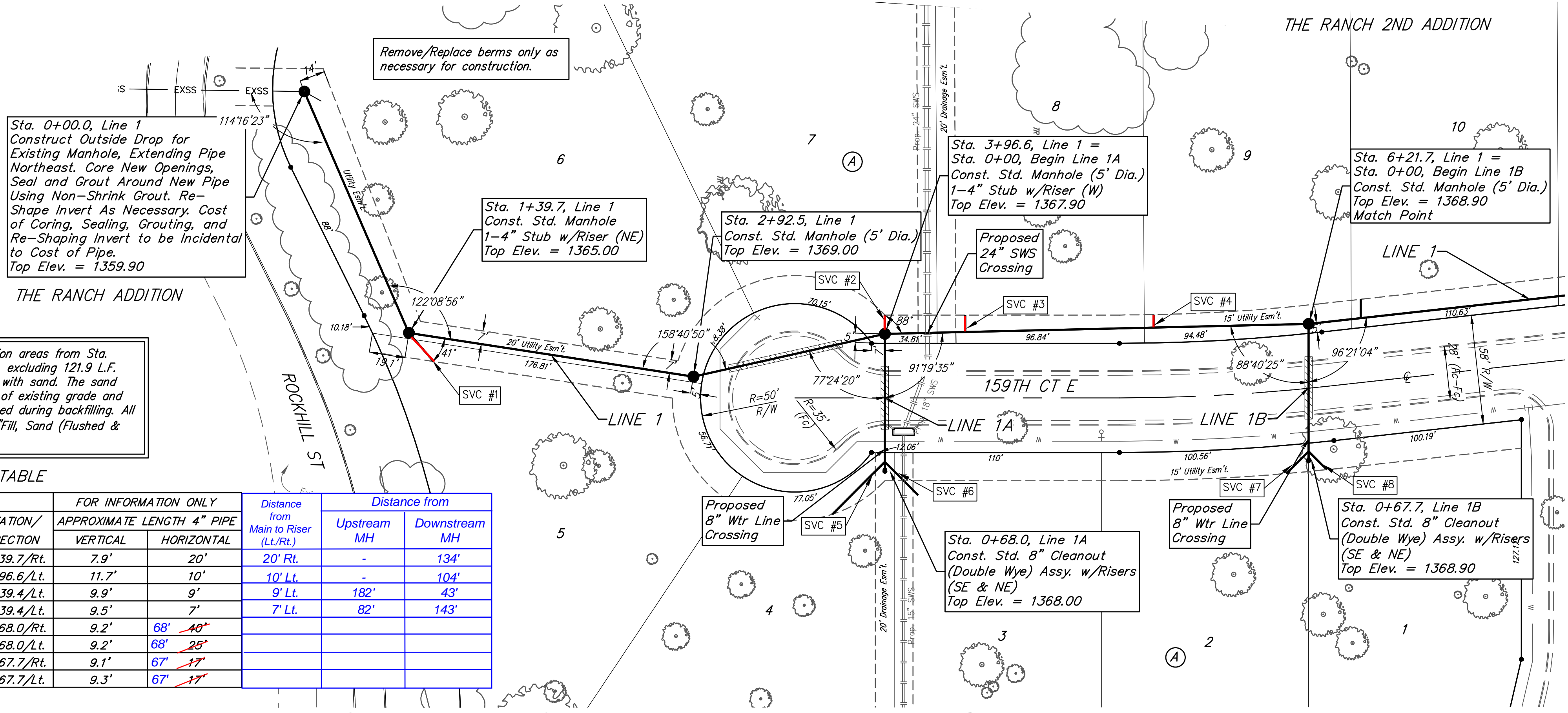
Sta. 0+67.7, Line 1B  
 Const. Std. 8" Cleanout (Double Wye) Assy. w/Risers (SE & NE)  
 Top Elev. = 1368.90

Existing trees which are in direct conflict with proposed new construction shall be removed by the Contractor ONLY with approval of the Engineer. Trees not in direct conflict with proposed new construction shall remain and be protected from damage. Cost shall be included in bid item "Site Clearing"

All trench and manhole excavation areas from Sta. 2+95.9 to Sta. 13+64.5, Line 1, excluding 121.9 L.F. Flowable Fill, shall be backfilled with sand. The sand backfill shall be within two feet of existing grade and shall be water-jetted and vibrated during backfilling. All costs shall be paid for as L.F. "Fill, Sand (Flushed & Vibrated)".

SEWER SERVICE TABLE

NUMBER	TYPE	LOCATION			FOR INFORMATION ONLY		Distance from Main to Riser (L/R)	Distance from		
		LOT NO.	BLOCK NO.	LINE NO.	STATION/DIRECTION	APPROXIMATE LENGTH 4" PIPE		VERTICAL	HORIZONTAL	Upstream MH
1	4" Stub	5	A	1	1+39.7/Rt.	7.9'	20'	20' Rt.	-	134'
2	4" Stub	7	A	1	3+96.6/Lt.	11.7'	10'	10' Lt.	-	104'
3	8" X 4" Tee	8	A	1	4+39.4/Lt.	9.9'	9'	9' Lt.	182'	43'
4	8" X 4" Tee	9	A	1	5+39.4/Lt.	9.5'	7'	7' Lt.	82'	143'
5	Cleanout	4	A	1A	0+68.0/Rt.	9.2'	68'	10'	-	-
6	Cleanout	3	A	1A	0+68.0/Lt.	9.2'	68'	25'	-	-
7	Cleanout	2	A	1B	0+67.7/Rt.	9.1'	67'	17'	-	-
8	Cleanout	1	A	1B	0+67.7/Lt.	9.3'	67'	17'	-	-



**Baughman** The Ranch 2nd Addition  
**LINE 1, 1A, & 1B**  
 Sanitary Sewer Improvements

Baughman Company, P.A. 315 Ellis St. Wichita, KS 67211 P 316-262-7271 F 316-262-0149  
 ENGINEERING | SURVEYING | PLANNING | LANDSCAPE ARCHITECTURE

PROJECT NUMBER: 2019-015115  
 DESIGN: AEG  
 DRAWN: HW  
 REVISIONS: 10/17/19 HW DATE: 09/23/19  
 10/17/19 HW Update Service #1 APPROVED: 09/23/19

SCALE: Noted  
 SHEET: 2 OF 16

E:\Projects\The Ranch 2nd\_19-04-P447\Engineering\Phase 1\SS\SS PLANS.dwg

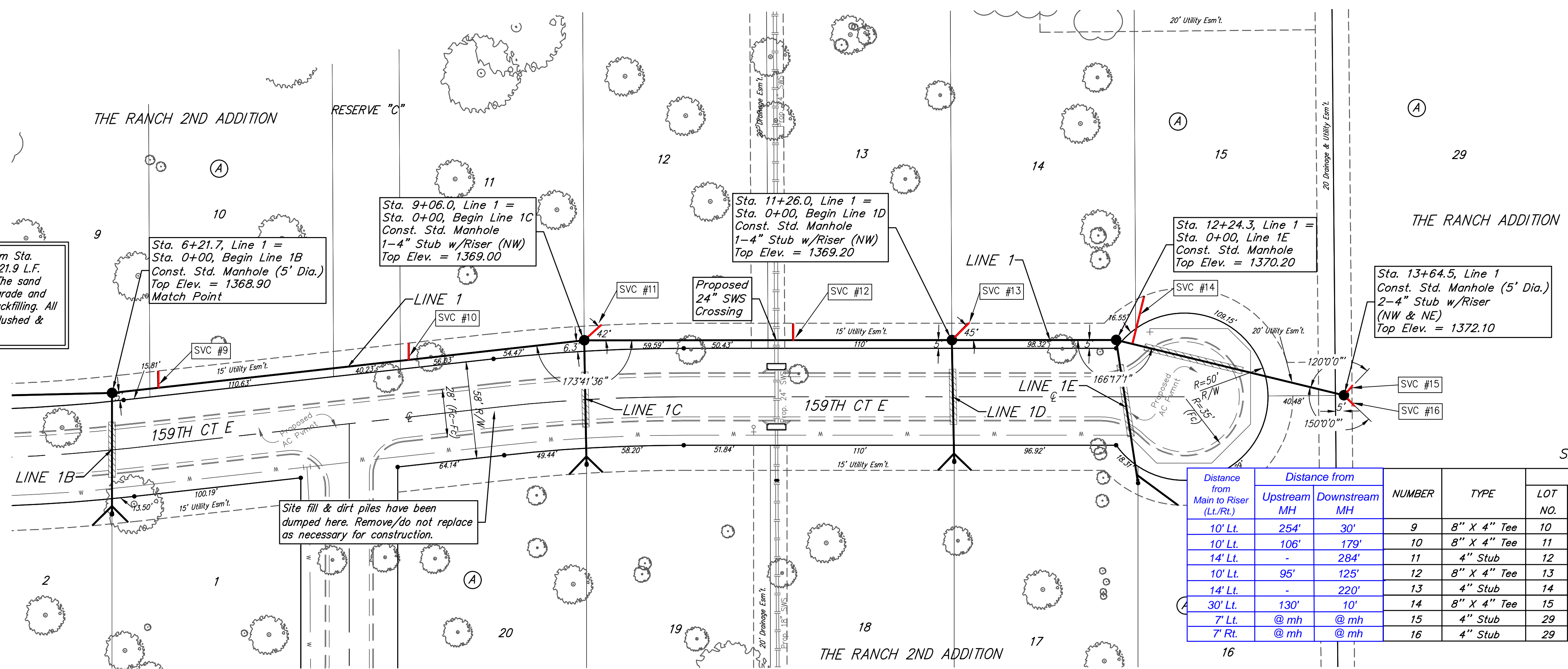
**BENCHMARKS:**  
 #1: "X" CUT CHISELED ON CURB INLET,  
 8.9' S. & 27.5' W. OF THE NW COR., LOT  
 22, BLOCK 1, QUAIL CROSSING ADDITION,  
 PHASE 2, 22.3' EAST OF C.N. 159TH ST. E.  
 ELEV. = 1370.15 (NAVD88)

#2: "X" CUT CHISELED ON CURB INLET,  
 13.2' S. & 60.1' E. OF THE NE COR., LOT  
 2, BLOCK A, THE RANCH 2ND ADDITION,  
 24.9' WEST OF C.N. 159TH ST. E.  
 ELEV. = 1369.05 (NAVD88)

All trench and manhole excavation areas from Sta. 2+95.9 to Sta. 13+64.5, Line 1, excluding 121.9 L.F. Flowable Fill, shall be backfilled with sand. The sand backfill shall be within two feet of existing grade and shall be water-jetted and vibrated during backfilling. All costs shall be paid for as L.F. "Fill, Sand (Flushed & Vibrated)".

Site fill & dirt piles have been dumped here. Remove/do not replace as necessary for construction.

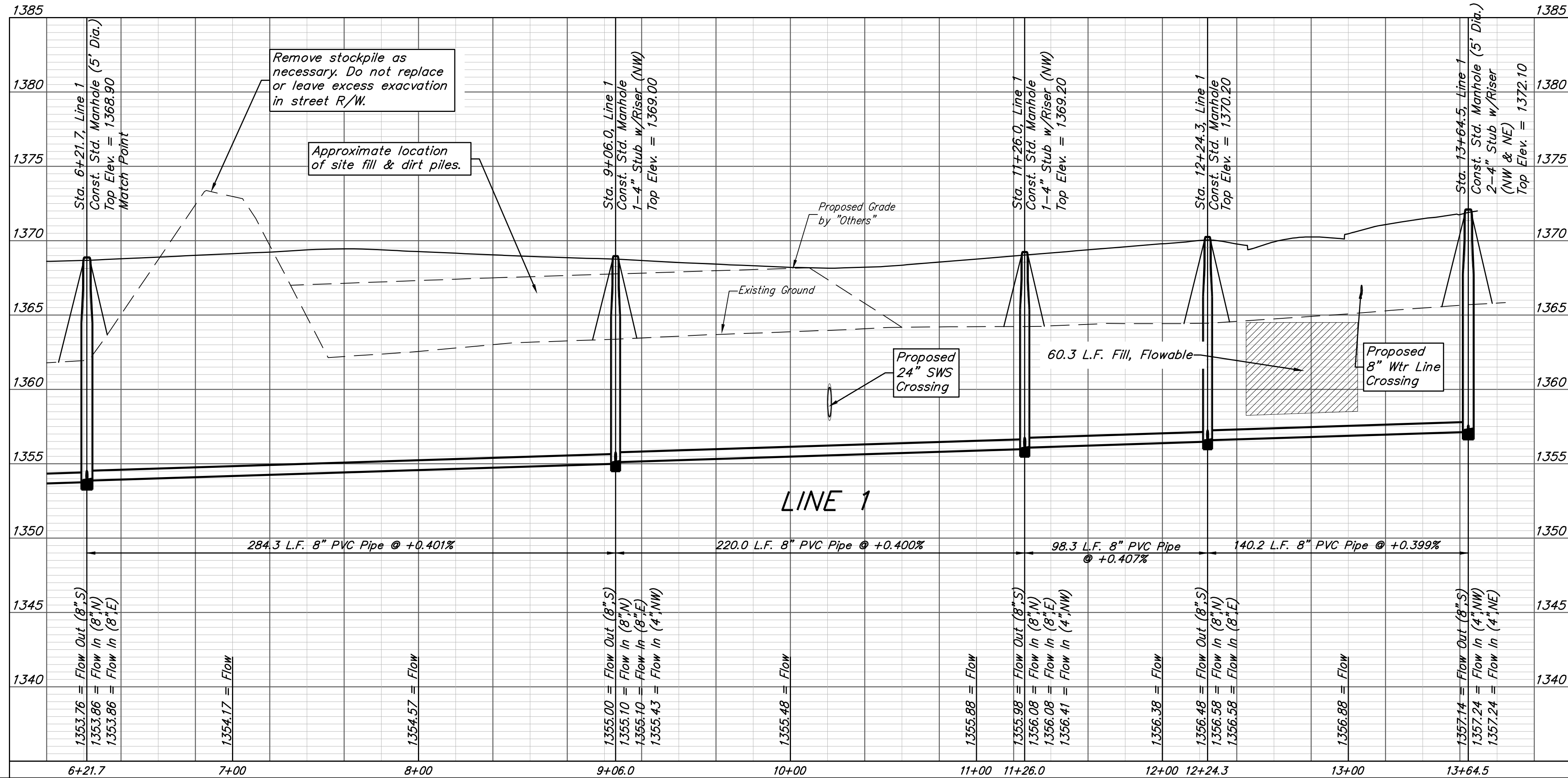
Existing trees which are in direct conflict with proposed new construction shall be removed by the Contractor ONLY with approval of the Engineer. Trees not in direct conflict with proposed new construction shall remain and be protected from damage. Cost shall be included in bid item "Site Clearing"



NOTE: Lot 29, Block A of The Ranch Addition has two services due to future lot split.  
 Top Elev. = 1372.10

SEWER SERVICE TABLE

Distance from Main to Riser (L/L/R)	Distance from		NUMBER	TYPE	LOCATION			FOR INFORMATION ONLY		
	Upstream MH	Downstream MH			LOT NO.	BLOCK NO.	LINE NO.	STATION/ DIRECTION	APPROXIMATE LENGTH 4" PIPE	VERTICAL
10' Lt.	254'	30'	9	8" X 4" Tee	10	A	1	6+21.7/Lt.	10.2'	10'
10' Lt.	106'	179'	10	8" X 4" Tee	11	A	1	8+00.4/Lt.	10.0'	10'
14' Lt.	-	284'	11	4" Stub	12	A	1	9+06.0/Lt.	8.5'	14'
10' Lt.	95'	125'	12	8" X 4" Tee	13	A	1	10+31.0/Lt.	7.9'	10'
14' Lt.	-	220'	13	4" Stub	14	A	1	11+26.0/Lt.	8.0'	14'
30' Lt.	130'	10'	14	8" X 4" Tee	15	A	1	12+34.33/Lt.	8.7'	30'
7' Lt.	@ mh	@ mh	15	4" Stub	29	A	1	13+64.5/Lt.	9.4'	7'
7' Rt.	@ mh	@ mh	16	4" Stub	29	A	1	13+64.5/Rt.	9.6'	7'



**Baughman** The Ranch 2nd Addition  
**LINE 1**  
 Sanitary Sewer Improvements

Baughman Company, P.A. 315 Ellis St. Wichita, KS 67211 P 316-262-7271 F 316-262-0149  
 ENGINEERING | SURVEYING | PLANNING | LANDSCAPE ARCHITECTURE

PROJECT NUMBER: 2019-015115  
 DESIGN: AEG  
 DRAWN: HW  
 APPROVED: [Signature]  
 DATE: 09/23/19

REVISIONS:

SCALE: Noted  
 SHEET: **3 OF 16**

**BENCHMARKS:**  
 #1: "X" CUT CHISELED ON CURB INLET,  
 8.9' S. & 27.5' W. OF THE NW COR., LOT  
 22, BLOCK 1, QUAIL CROSSING ADDITION,  
 PHASE 2, 22.3' EAST OF C N. 159TH ST. E.  
 ELEV. = 1370.15 (NAVD88)

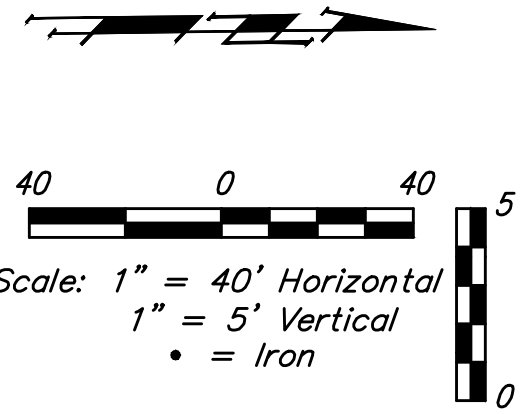
#2: "X" CUT CHISELED ON CURB INLET,  
 13.2' S. & 60.1' E. OF THE NE COR., LOT  
 2, BLOCK A, THE RANCH 2ND ADDITION,  
 24.9' WEST OF C N. 159TH ST. E.  
 ELEV. = 1369.05 (NAVD88)

THE RANCH 2ND ADDITION

(A)

29

THE RANCH ADDITION

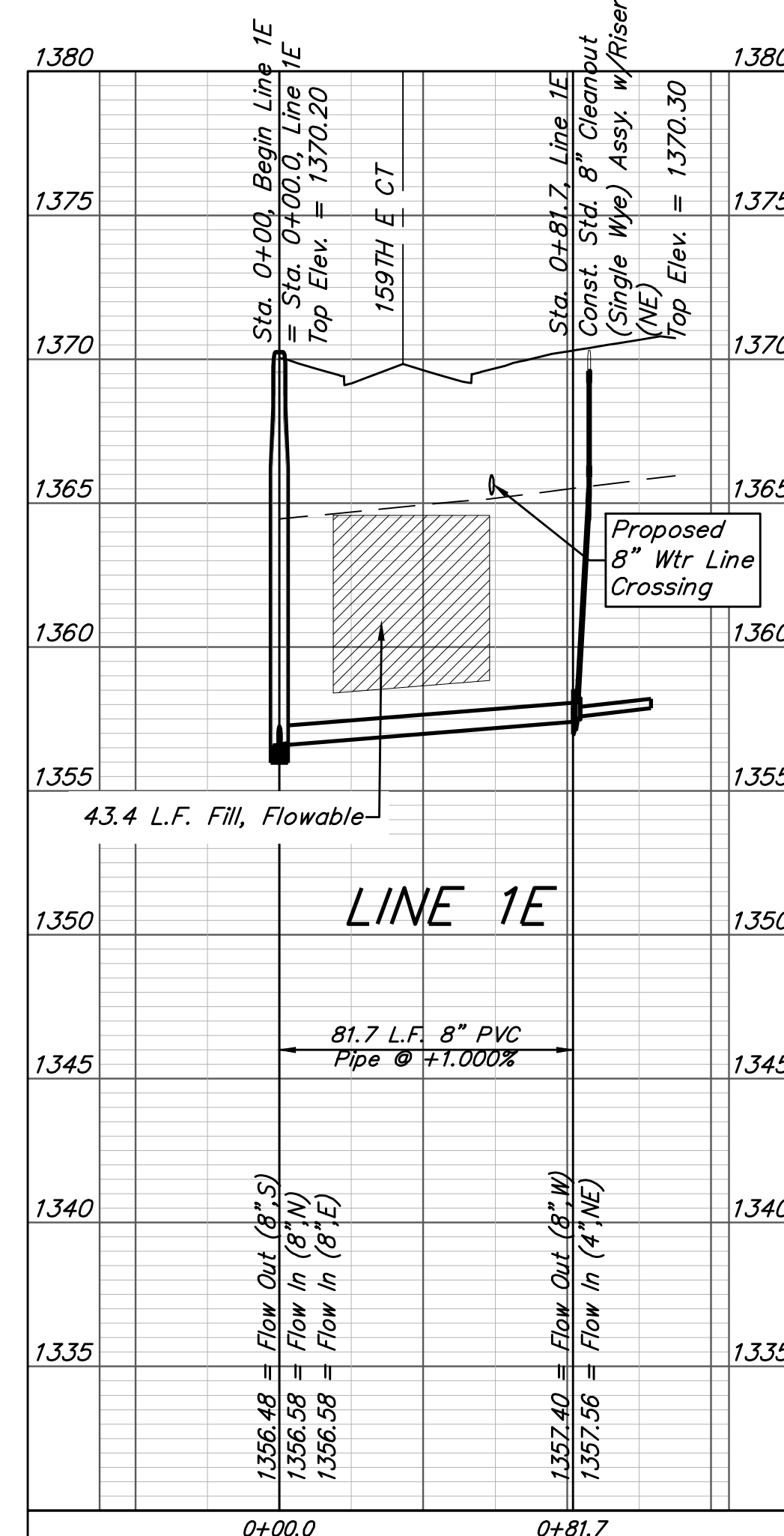
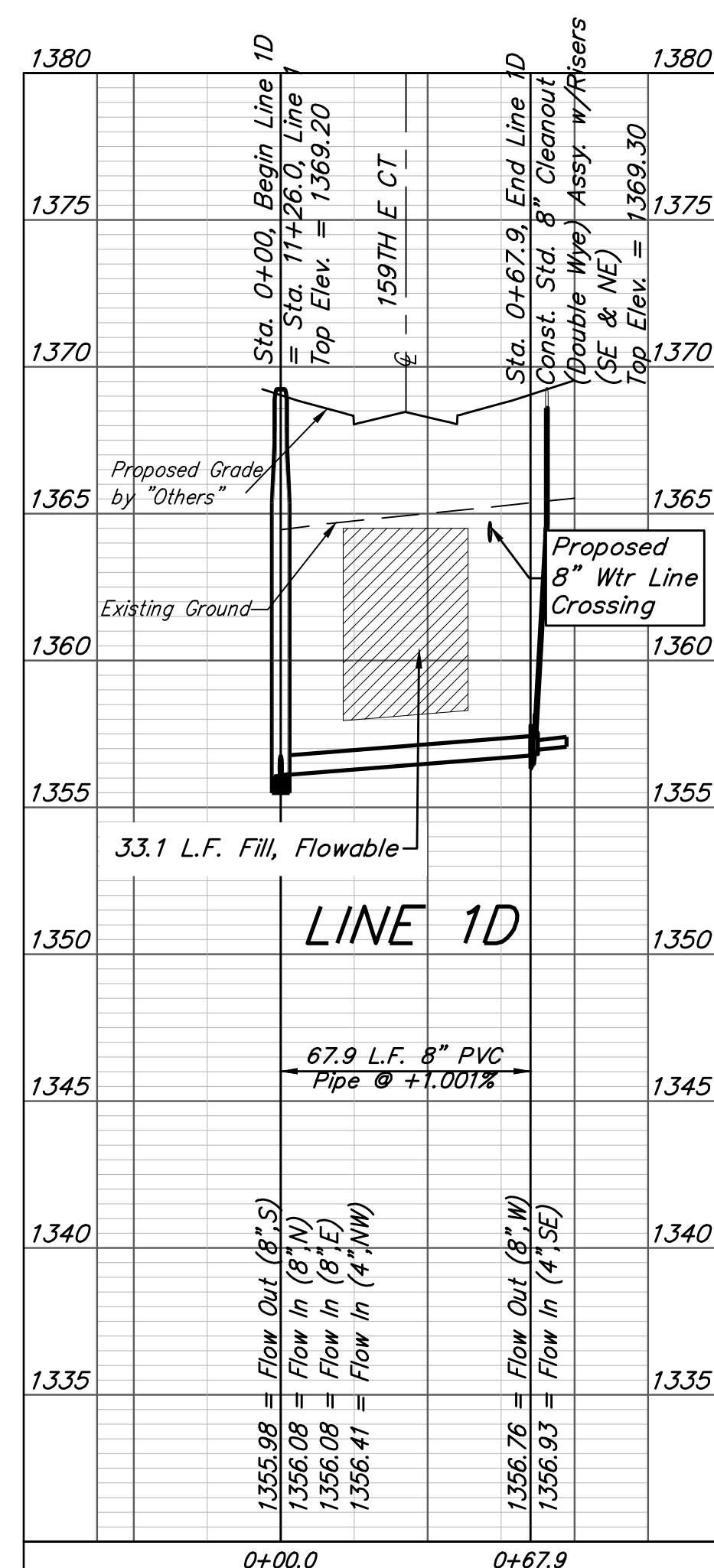
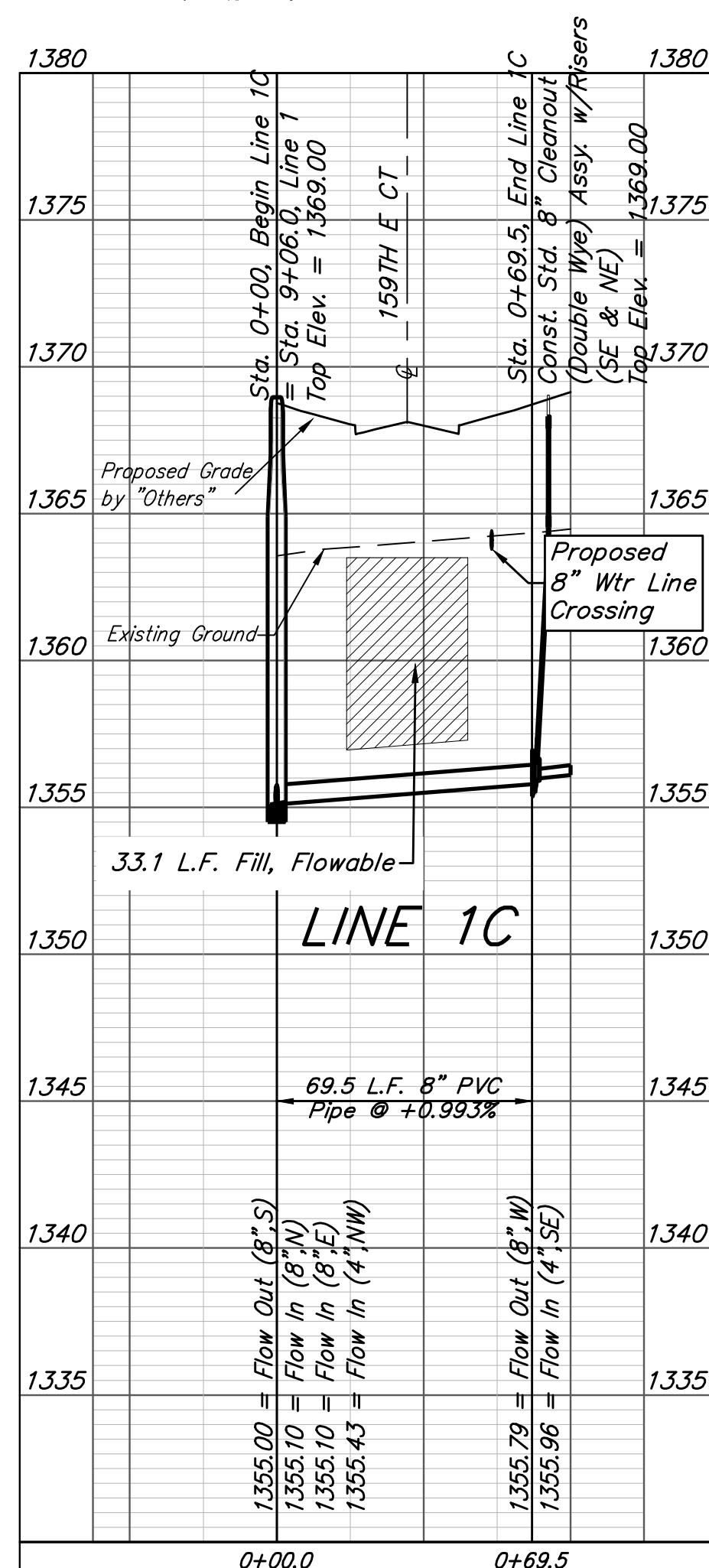
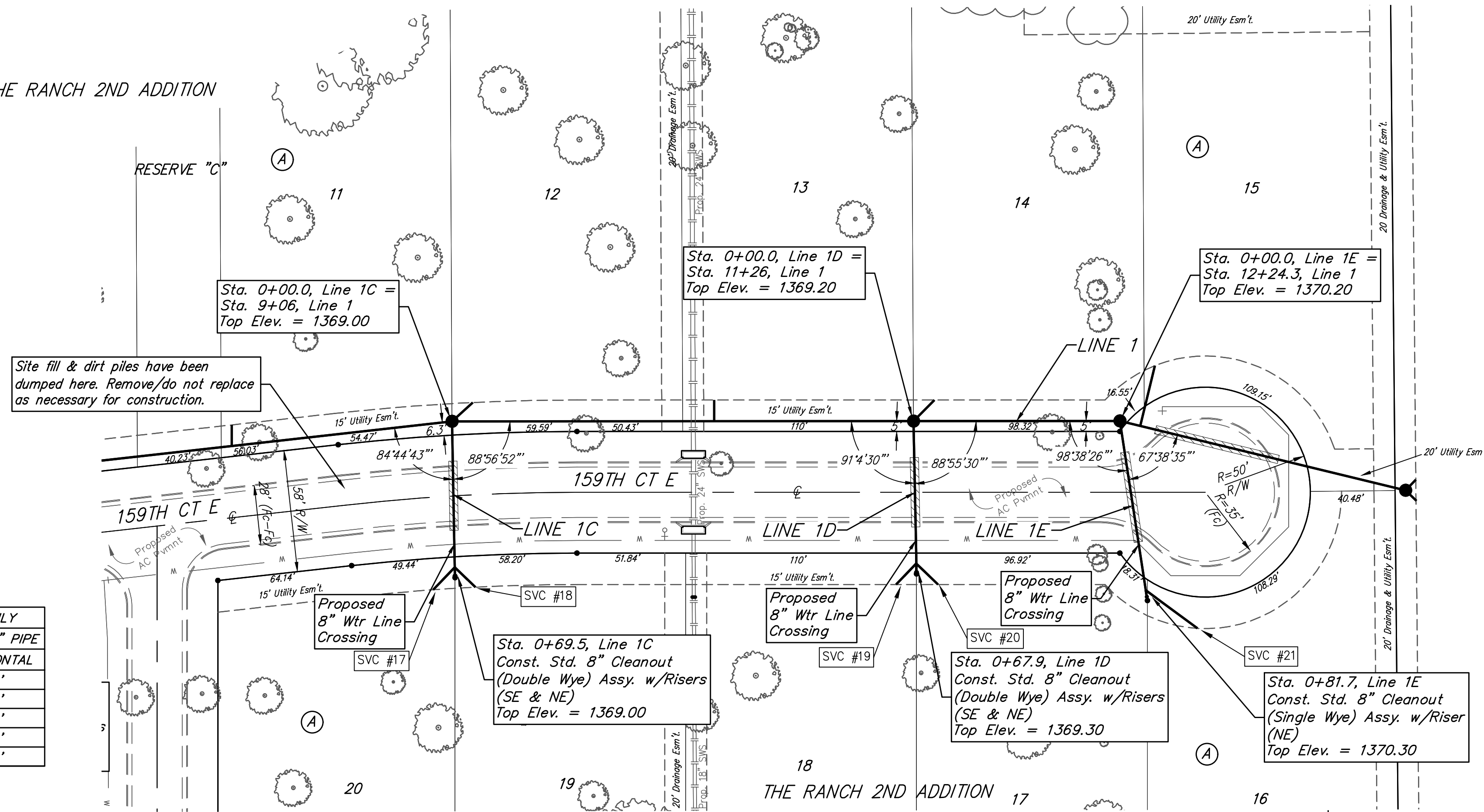


Site fill & dirt piles have been  
 dumped here. Remove/do not replace  
 as necessary for construction.

Existing trees which are in direct conflict with proposed  
 new construction shall be removed by the Contractor  
 ONLY with approval of the Engineer. Trees not in  
 direct conflict with proposed new construction shall  
 remain and be protected from damage. Cost shall be  
 included in bid item "Site Clearing"

SEWER SERVICE TABLE

NUMBER	TYPE	LOCATION				FOR INFORMATION ONLY	
		LOT NO.	BLOCK NO.	LINE NO.	STATION/ DIRECTION	APPROXIMATE LENGTH 4" PIPE VERTICAL	HORIZONTAL
17	Cleanout	20	A	1C	0+69.5/Rt.	8.1'	15'
18	Cleanout	19	A	1C	0+69.5/Lt.	8.0	14'
19	Cleanout	18	A	1D	0+67.9/Rt.	7.3'	14'
20	Cleanout	17	A	1D	0+67.9/Lt.	7.5	14'
21	Cleanout	16	A	1E	0+81.7/Lt.	7.8'	31'



**Baughman** The Ranch 2nd Addition  
**LINE 1C, 1D, & 1E**  
 Sanitary Sewer Improvements

Baughman Company, P.A. 315 Ellis St. Wichita, KS 67211 P 316-262-7271 F 316-262-0149  
 ENGINEERING | SURVEYING | PLANNING | LANDSCAPE ARCHITECTURE

PROJECT NUMBER  
 2019-015115

DESIGN  
 AEG

DRAWN  
 HW

APPROVED  
 DATE  
 09/23/19

REVISIONS:

SCALE  
 Noted

SHEET  
**4 OF 16**

E:\Projects\The Ranch 2nd\_19-04-P447\Engineering\Phase 1\SS\SS PLANS.dwg