

SANITARY SEWER IMPROVEMENTS

AT

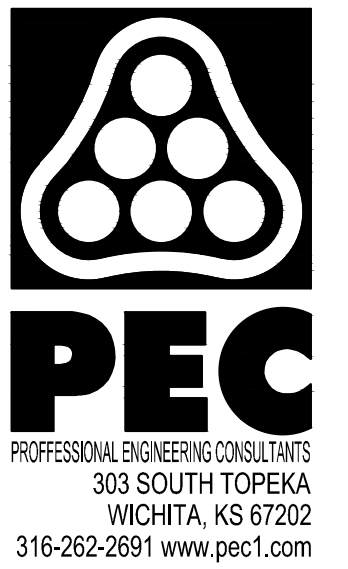
OJ WATSON PARK EVENT CENTER

CITY OF WICHITA PROJECT NO. 468-2019-019990
OCA 796049

CITY OF WICHITA, KANSAS

GARY JANZEN, P.E. - CITY ENGINEER

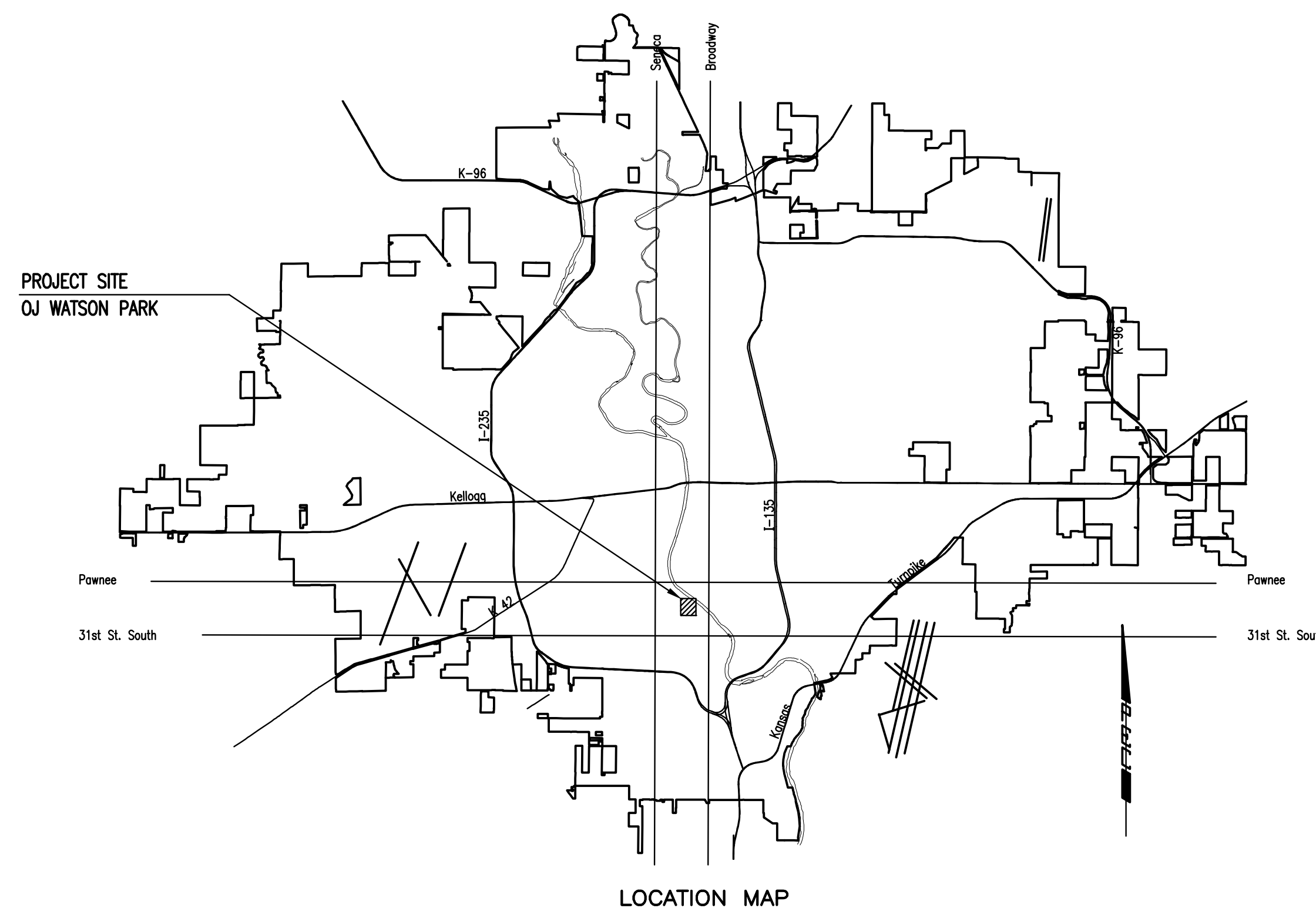
Dondlinger - Contractor
G. Baalman - City of Wichita, Field Project Engineer
C. Stone - City of Wichita, Inspector
As-built
Release Date: 9/28/2020
Completion Date:
: apr 9/29/20



SS IMPROVEMENTS
WATSON PARK EVENT CENTER
GARY JANZEN P.E. - CITY ENGINEER
CITY OF WICHITA PROJECT NO. 448-2019-019990

INDEX OF SHEETS

SHEET NO. G001	TITLE SHEET
SHEET NO. G002	KEY MAP AND GENERAL NOTES
SHEET NO. C101	SS LINE NO. 1
SHEET NO. C102	DITCH GRADING
SHEET NO. C103	PRECAST SANITARY SEWER MANHOLE
SHEET NO. C104	MANHOLE FRAME AND COVER SS
SHEET NO. C105-C109	EROSION CONTROL DETAILS



MARCH 2020

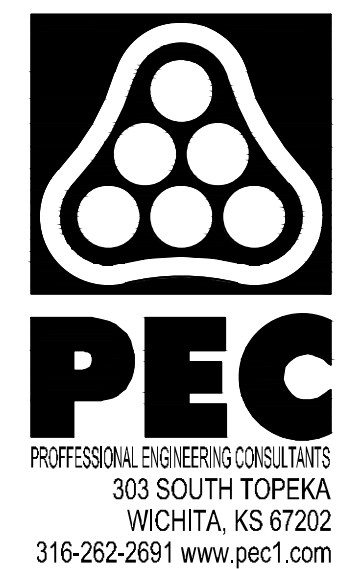
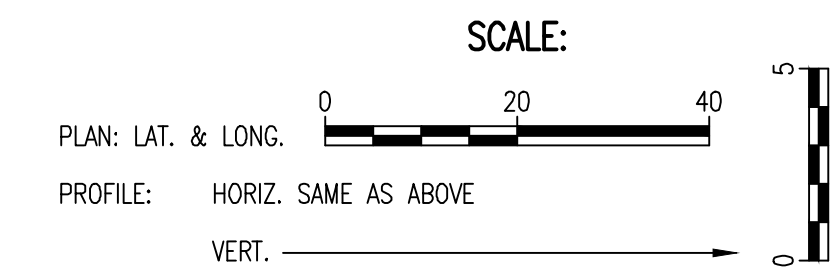
SAVED 3/14/2020 1:38:05 PM BY REBECCA MELLIES
PLOTTED 3/14/2020 1:45:20 PM BY REBECCA MELLIES, IE
U:\WICHITA-CIVIL\2019\197042\2010\MUNIDRAWINGS\SANITARY SEWER\197042-010-G001.DWG

Issue:		
1	SENT FOR REVIEW	2/13/20
JOB NO.	197042-010	
DATE	MARCH 2020	
PM	NLS	
DESIGNED BY	RMM	
DRAWN BY	RFT	
CHECKED BY	MEB	

TITLE SHEET

G001
01 OF 10

Built per plan



SS IMPROVEMENTS
WATSON PARK EVENT CENTER
 GARY JANZEN P.E. - CITY ENGINEER
 CITY OF WICHITA PROJECT NO. 448-2019-019990

Issue:	DATE	DESCRIPTION
1	2/13/20	SENT FOR REVIEW

JOB NO.	197042-010
DATE	MARCH 2020
PM	NLS
DESIGNED BY	RMM
DRAWN BY	RFT
CHECKED BY	MEB

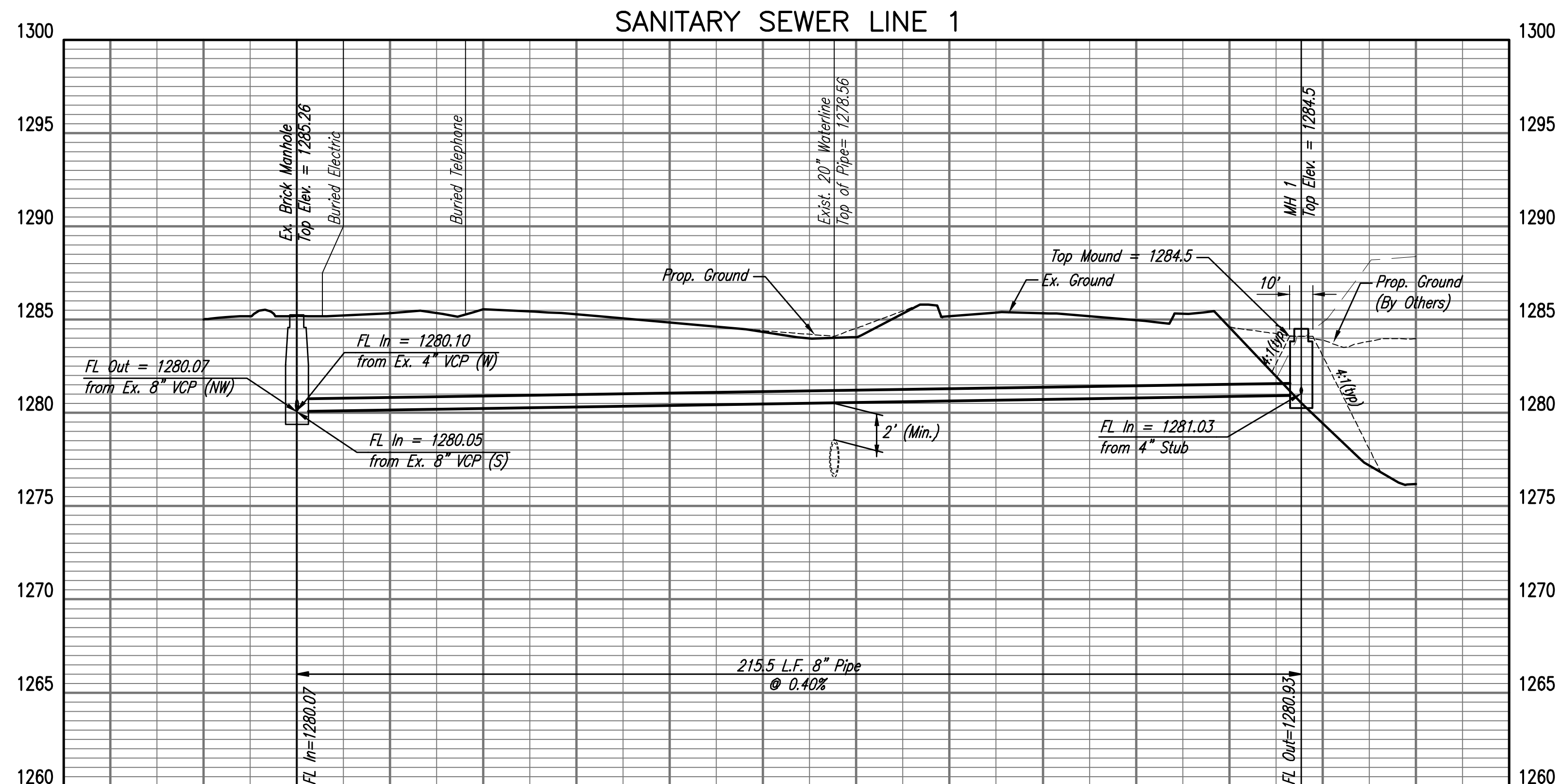
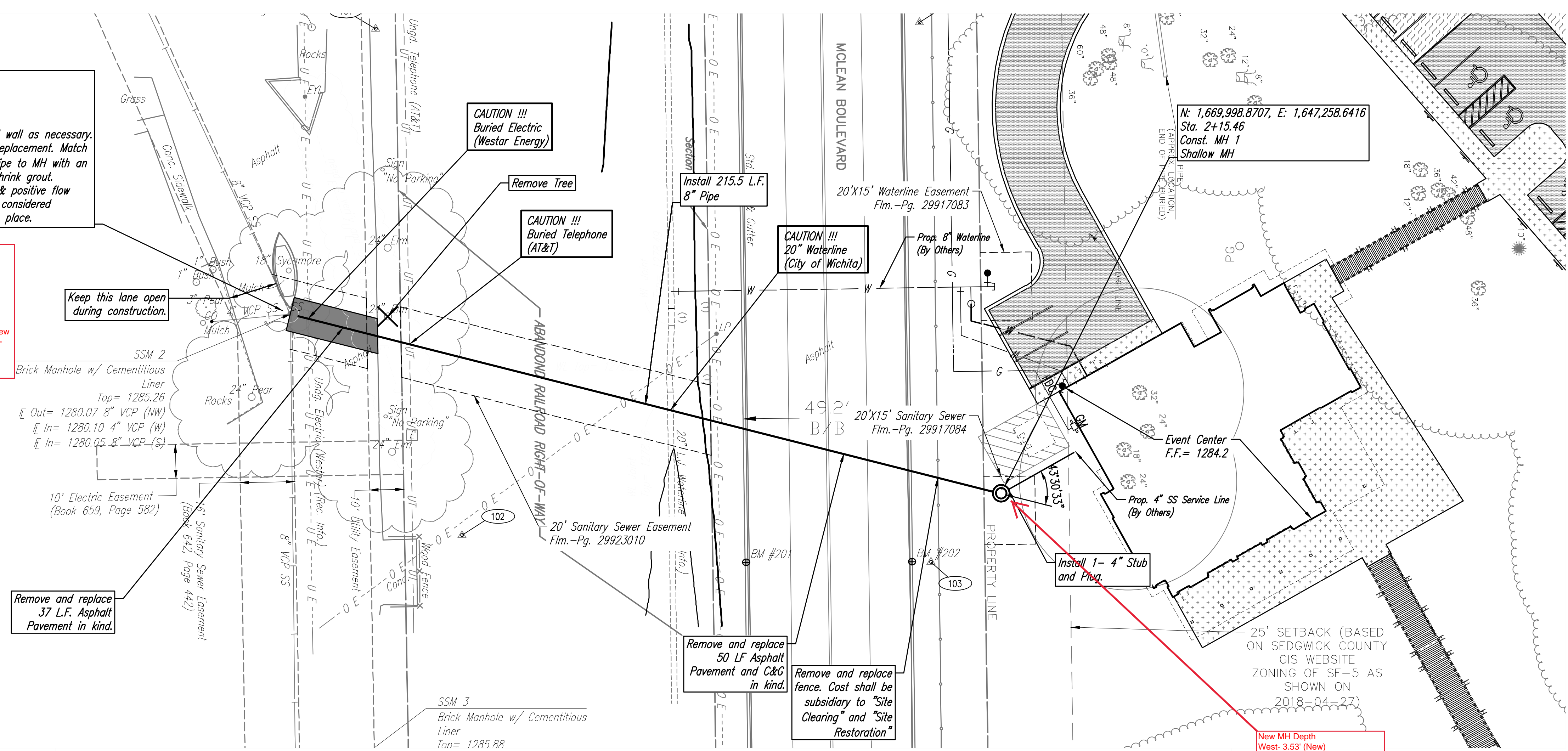
SS LINE NO. 1
C101
 03 OF 10

N: 1,670,051.6300, E: 1,647,049.7420
 Sta. 0+00.00
 Ex. Brick Manhole
 w/ Cementitious Liner
 Remove and replace existing Brick MH wall as necessary. Patch cementitious lining after Brick replacement. Match existing wall thickness. Seal new 8" Pipe to MH with an approved waterstop gasket and non-shrink grout. Reshape MH floor to provide smooth & positive flow through manhole. This work shall be considered subsidiary to the price bid for pipe in place.

MH Depth
 North West - 5.21' (Existing)
 East - 5.15' (New)
 South - 5.25' (Existing)
 Northing - 1670051.6834
 Easting - 1647049.5355

Removed and replaced existing brick in MH to accommodate new 8" PVC pipe installation. Sealed with waterstop gasket and non-shrink grout. Reshaped MH floor.
 Installed a new cementitious liner afterwards

N: 1,669,998.8707, E: 1,647,258.6416
 Sta. 2+15.46
 Const. MH 1
 Shallow MH



SAVED 3/16/2020 10:47:51 AM BY REBECCA MELLIES
 PLOTTED 3/16/2020 10:57:03 AM BY REBECCA MELLIES, IE
 U:\WICHITA-CIVIL\2019\197042-010\MUNI\DRAWINGS\SANITARY SEWER\197042-010-C101.DWG