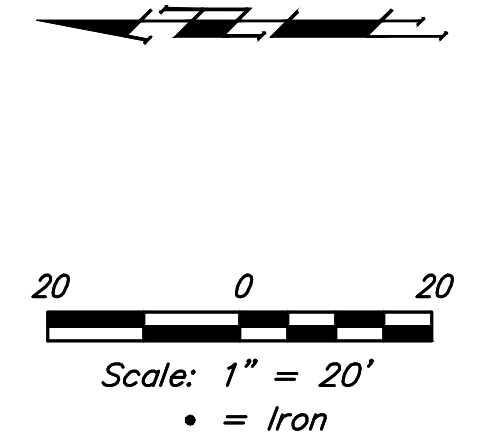
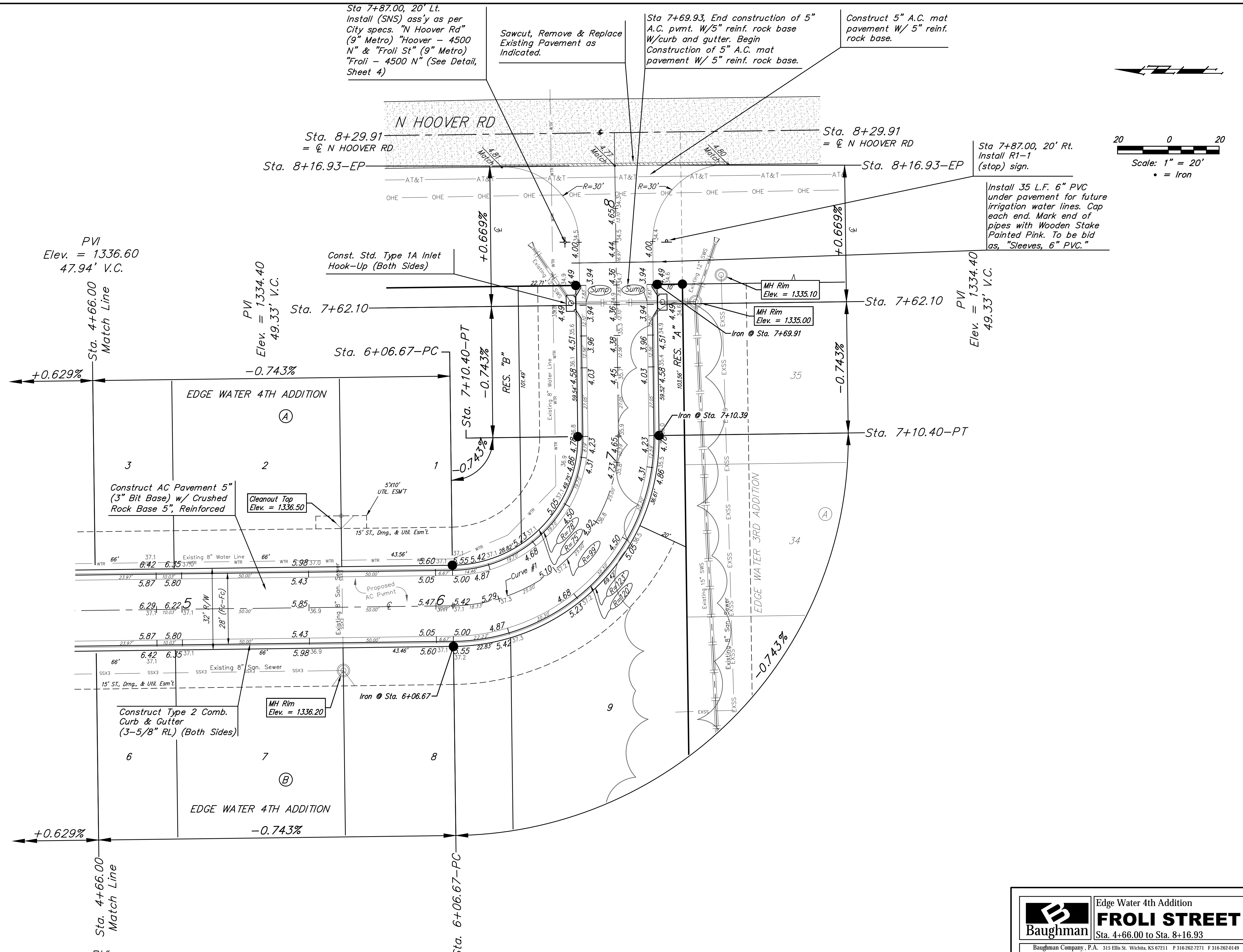


BENCHMARKS:
 disk adjacent to fire hydrant in SW corner of Lot 22 BLK A, Edgewater 3rd Addition
 Elev. = 1337.95 NGVD29

rail road spike in N face of power pole E of Lot 3 BLK A, Edgewater 4th Addition
 Elev. = 1336.93 NGVD29



Curve #1						
Curve Data Based on Centerline						
Rad. = 66', Delta = 90°02'21", Tangent = 66.05'						
Arc = 103.72', L.C. = 93.37', Def./Pt. = 26.04295 Min.						
Face Chord Lengths						
Station	Arc	8' Left	8' Right	Defl.	Total Defl.	
6+06.67	-	-	-	0°00'00"	0°00'00"	
6+25.00	18.33'	12.18'	24.36'	7°57'22"	7°57'22"	
6+50.00	25.00'	16.57'	33.13'	10°51'04"	18°48'26"	
6+75.00	25.00'	16.57'	33.13'	10°51'04"	29°39'31"	
7+00.00	25.00'	16.57'	33.13'	10°51'04"	40°30'35"	
7+10.34	10.34'	6.89'	13.77'	4°29'51"	44°59'51"	

Baughman Edge Water 4th Addition
FROLI STREET
 Sta. 4+66.00 to Sta. 8+16.93

Baughman Company, P.A. 315 Ellis St. Wichita, KS 67211 P 316-262-7271 F 316-262-0149
 ENGINEERING | SURVEYING | PLANNING | LANDSCAPE ARCHITECTURE

PROJECT NUMBER 472-2020-085613	DESIGN AEG	DRAWN CDW
REVISIONS:	APPROVED	DATE 11/16/20
	SCALE Noted	SHEET 6 OF 16

E:\Projects\Edge Water 4th Add. 2020\513\Engineering\Phase 1\STR_2020\4558\STR_PLANS2.dwg