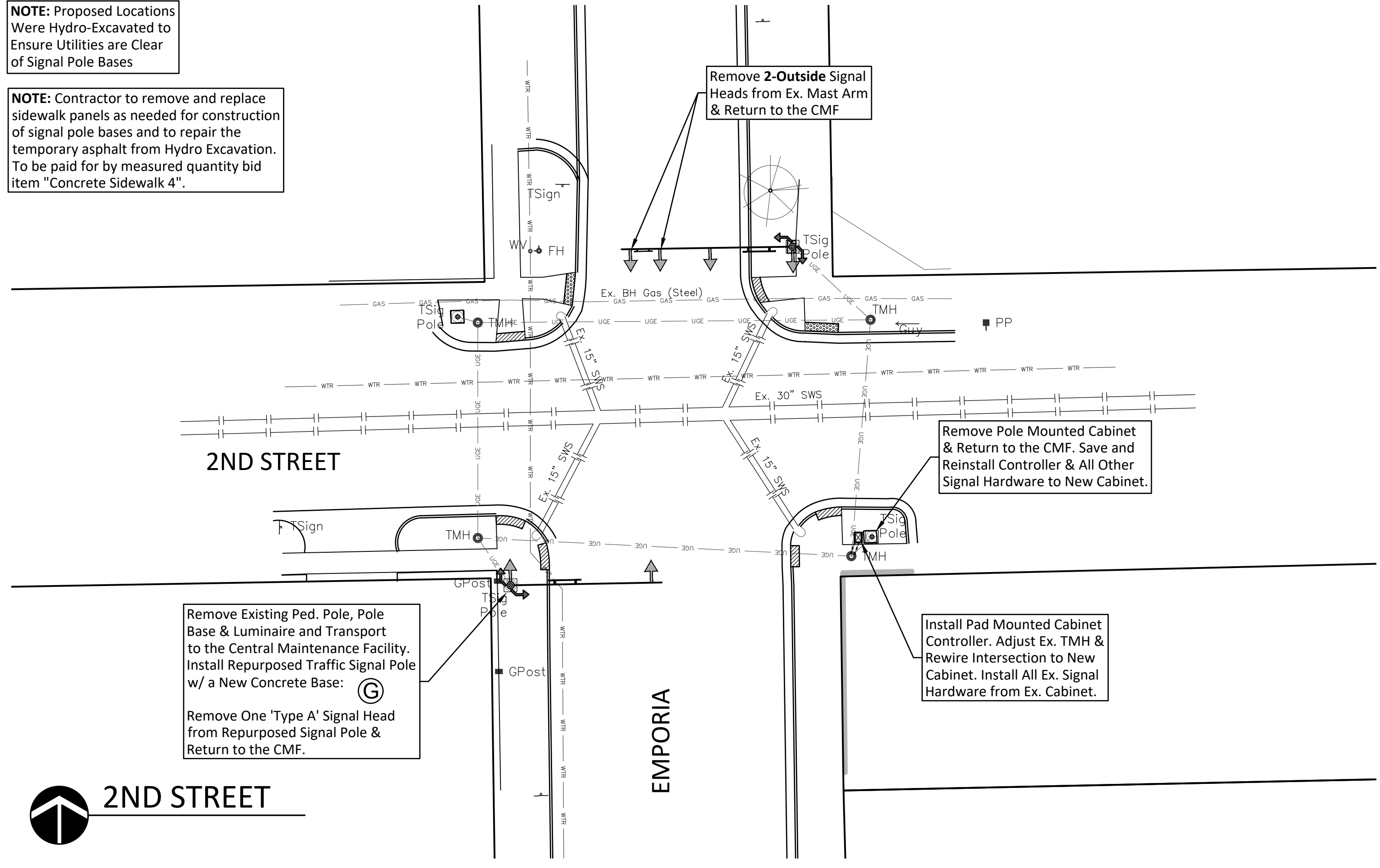


**NOTE:** Proposed Locations Were Hydro-Excavated to Ensure Utilities are Clear of Signal Pole Bases

**NOTE:** Contractor to remove and replace sidewalk panels as needed for construction of signal pole bases and to repair the temporary asphalt from Hydro Excavation. To be paid for by measured quantity bid item "Concrete Sidewalk 4".

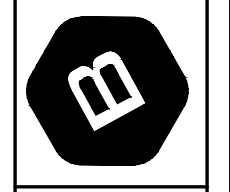


**SIGNAL POLE & MAST ARM INVENTORY**

INT.	TAG	MAST ARM	JU/STD	LUMIN. (LIGHT)	'A' SIG. HEADS
TOPEKA	(A)*	22'	JU	No	2
	(B)	35'	JU	No	3
	(C)	32'	STD	-	2
EMPORIA	(D)*	24'	JU	Yes	2
	(E)	20'	STD	-	2
	(F)	35'	JU	Yes	3
ARENA CROSSING	(G)	35'	STD	-	3

\*Signal & Mast Arms which are not Reused for this Project. Return to CMF.

**BAUGHMAN COMPANY**  
315 Ellis St. Wichita, KS 67211 316-262-7271  
BaughmanCo.com



EMPORIA TWO-WAY CONVERSION  
**SIGNAL PLANS**  
CAPITAL IMPROVEMENT PROJECT

PROJECT NUMBER: 472-085610  
INTERNAL NUMBER: 20-03-E546  
DESIGN: LP  
DRAWN: LP  
DATE: Nov, 2020  
SHEET  
OF  
**5**  
**16**