

GENERAL NOTES:

1. Contractor will be required to provide notice to utility companies a minimum of seventy-two (72) hours prior to any excavation, as follows:

Kansas One-Call 687-2470

The Contractor must notify the following in case of an emergency:

- Cox Communications 262-4270
- Kansas Gas Service 1-888-482-4950
- Westar Energy 383-8650
- Aquila Energy 1-800-303-0357
- AT&T 268-2245
- City of Wichita Water Dept. 268-4563
- City of Wichita Sewer Maint. 268-4024
- City of Wichita Storm Sewer Maint. 268-4090
- City of Wichita Traffic Maint. 268-4034
- Conoco Phillips Pipeline Co. 1-877-267-2290
- Southern Star Pipeline Co. 529-6600
- Kinder-Morgan Pipeline Co. 1-888-844-5658

2. Utility service lines, poles, valve boxes, meters, and etcetera are to be adjusted as necessary by others prior to construction unless the plans specifically call for their adjustment by the Contractor or unless the plans specifically identify a utility to be adjusted by their owner during construction. Existing utilities and their location, as shown on the plans, represent the best information obtainable for design. The Contractor will be required to work around existing utilities within the right-of-way which do not conflict with proposed construction.

3. Rubble from the removal of miscellaneous structures and excess excavation which is to be wasted shall be disposed of on sites to be provided by the Contractor. These sites shall be approved by the Engineer as to suitability, appearance and site location. Locations, in the opinion of the Engineer, that will leave an unsightly appearance will not be approved. All disposal sites must be approved by the Kansas Department of Health and Environment. Material either stockpiled or disposed of in a flood plain would require a Kansas State Board of Agriculture permit. Any material dumped in waters of the United States or wetlands is subject to U.S. Corps of Engineers permitting regulations. Any material buried or stockpiled beyond approved construction limits would require additional archaeological investigations unless buried in a previously approved borrow location.

4. Trees and shrubs in public right-of-way which are in direct conflict with proposed new construction shall be removed by the Contractor with the Engineer's approval. Trees and shrubs which are not in direct conflict with proposed new construction shall be saved and protected from damage.

5. The Contractor shall give all property owners and/or tenants of developed property abutting the construction of this project a minimum of ten (10) days notice prior to start of construction.

6. The Contractor shall be responsible for preserving property irons. The Contractor will be required to re-establish any property irons which are damaged or destroyed by his construction operations. Such irons shall be re-established by a licensed land surveyor in accordance with state laws.

7. All existing and proposed erosion control measures including silt fencing, erosion control mat, straw bales, inlet barriers, and const. entrance shall be maintained throughout construction by the contractor and until project is accepted by the City of Wichita. The on-site engineer shall complete weekly reports on the status of erosion control measures. The contractor shall be required to comply with maintenance and/or replacement of erosion control measures as determined by the on-site engineer until project is accepted by City of Wichita. Maintenance and/or replacement of erosion control measures to be paid by L.S. bid item "Maintain Existing BMP's."

8. All excess excavation shall remain on-site and shall be stockpiled or spread at a location determined by the engineer.

9. The Contractor shall be responsible for maintaining continuous flow of sewage through construction. Contractor's proposed method for maintaining sewage flow shall be approved by the Engineer. Cost of maintaining flow of sewage through construction will not be paid for directly and this cost shall be considered as subsidiary to the other pay items of work.

10. All areas disturbed during construction shall be seeded as follows (Temporary Seeding):

Seed: Rye grass (PLS)--5 lbs./1000 Sq. Ft.

All costs associated with seeding shall be included in bid item "Seeding". All seeding operations shall conform to City of Wichita Standard Specifications.

11. Trees and shrubs in the work area which are in direct conflict with proposed new construction shall be removed by the Contractor ONLY with the Developer or Baughman Company approval. Trees and shrubs which are not in direct conflict with proposed new construction shall be saved and protected from damage. If trimming is necessary, a chainsaw shall be used. Breaking limbs with equipment will not be allowed. An on-site pre-construction meeting will occur prior to any construction to discuss tree removal, tree protection, and tree trimming.

12. The Developer for this project is Jay Russell P.O. Box 75450, Wichita, KS 67275 (316) 722-2417 jay.russell@russellco.com

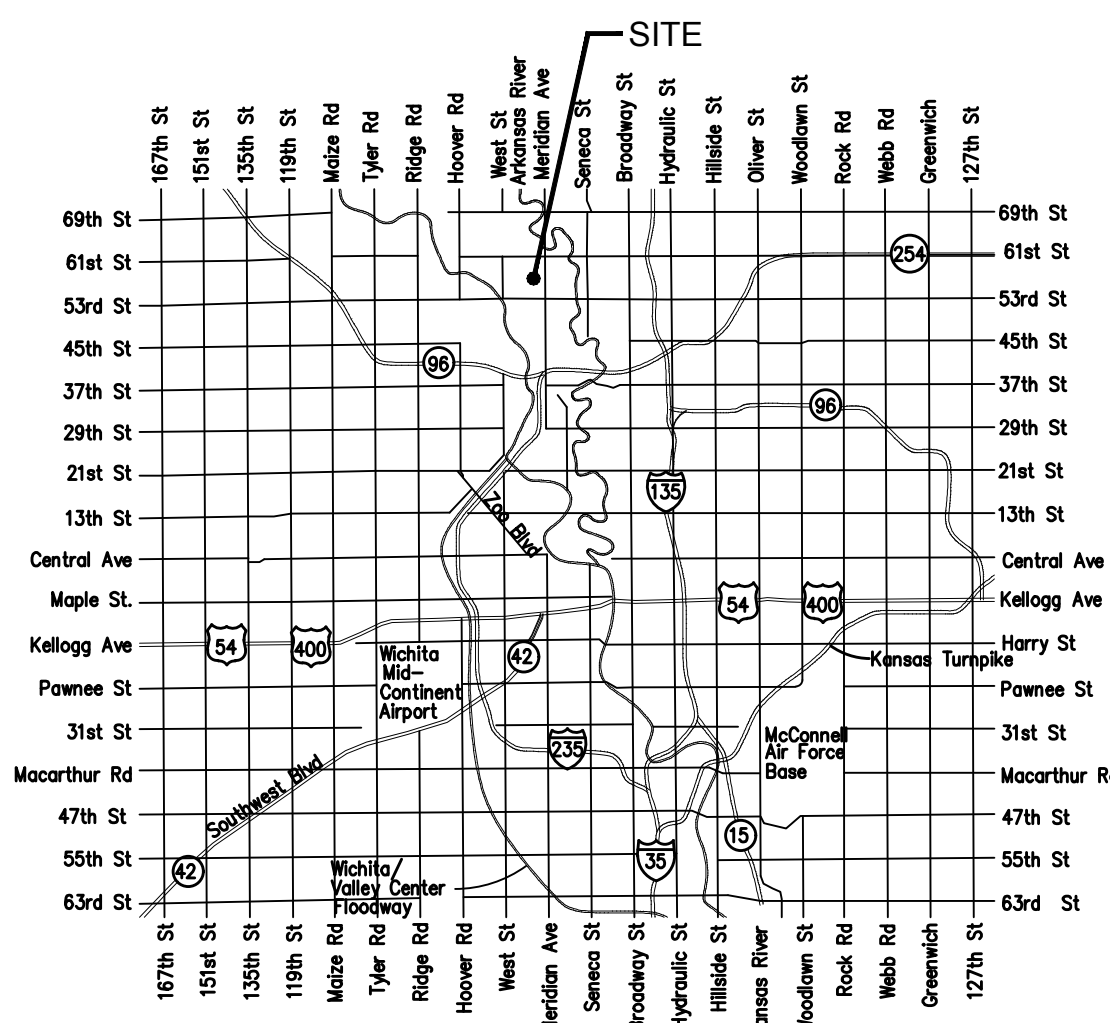
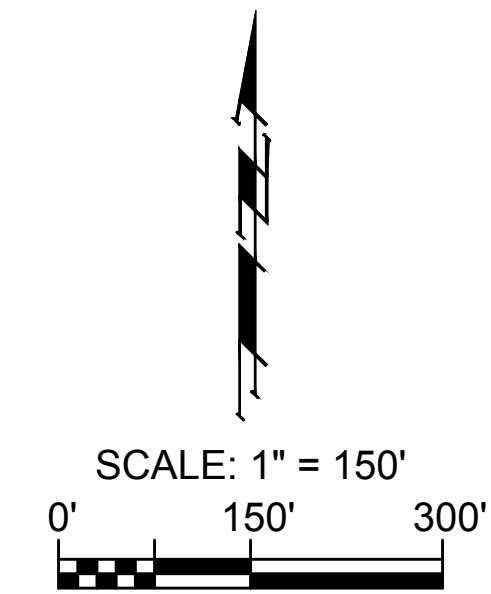
SANITARY SEWER IMPROVEMENTS to serve NORTHGATE 3RD ADDITION CITY OF WICHITA, KANSAS

Gary Janzen, P.E. City Engineer
Project Number: 468-2019-023955
OCA Number: 744519

Nowak Construction - Contractor
B. Woods - City of Wichita, Field Project Engineer
R. Carillo - City of Wichita, Inspector
As-Built
Stubs & Risers
Release Date (for connection purposes only): 8/19/2020
Completion Date: 6/2/2021
pdf: apr 12/15/2020

SHEET INDEX

Title Sheet	1
Line 1	2-3
Erosion Control Plan	4
Erosion Control BMP Details	5-9
Standard Manhole Detail	10
Ring & Cover Detail	11
Vertical Riser Detail	12
Coordinate Sheet	13
Copy of Plat	14

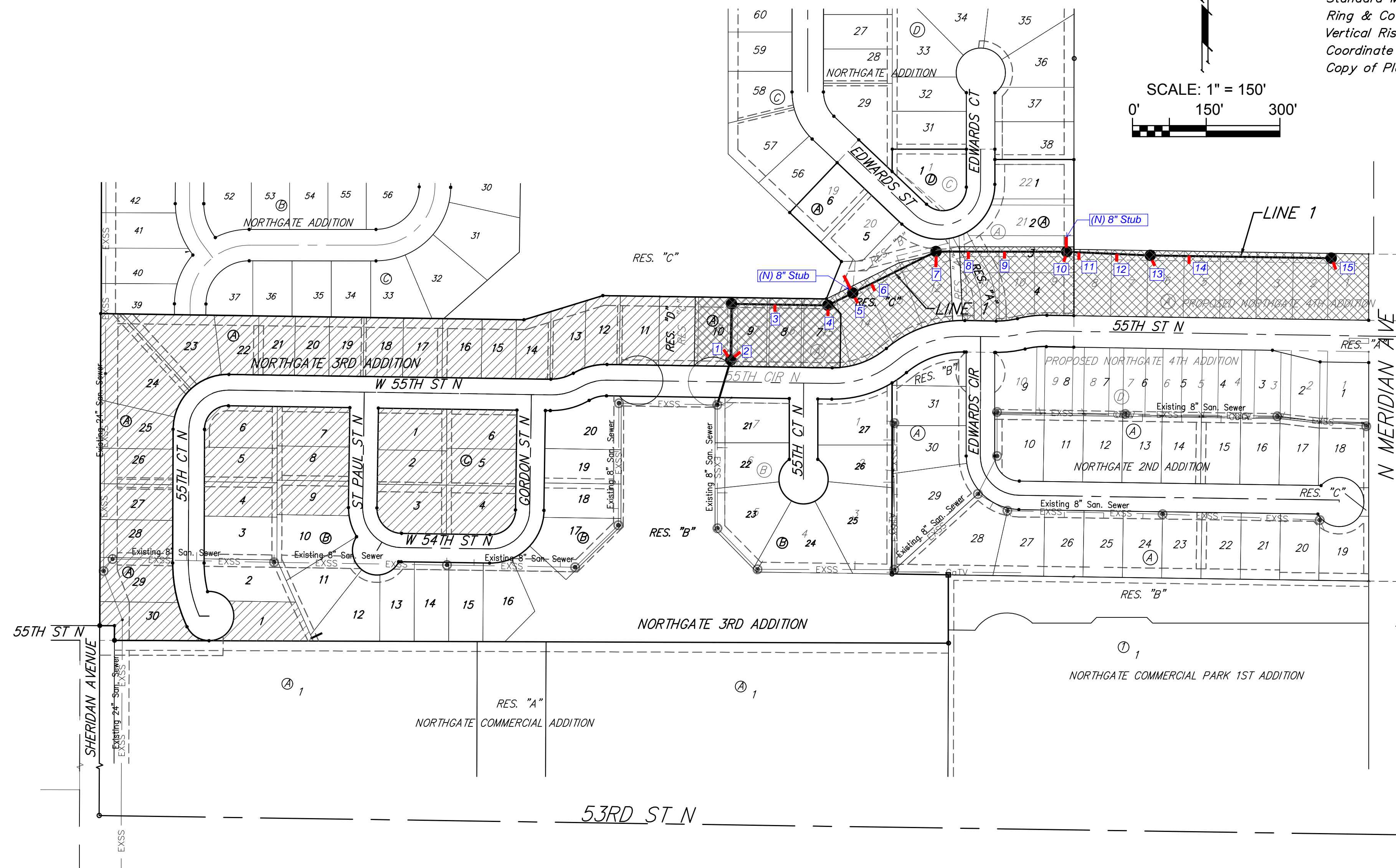


VICINITY MAP

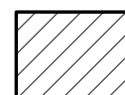
BENCHMARK

Chiseled square, center of storm water sewer vault, west side of Meridian, 145' S. & 30.6' E. of the NE Cor., Lot 1, Block A, Northgate 2nd Addition.
Elev. = 1334.49 (NAVD88)

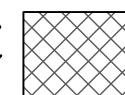
Brass Disc in top of curb 14.8' west of southwest corner of Lot 9, Blk A, Northgate 2nd Addition.
Elev. = 1337.35 (NAVD88)



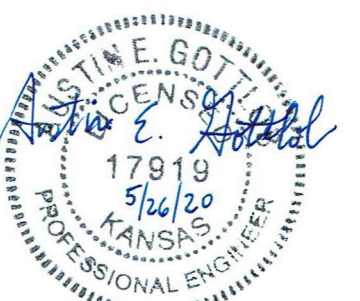
BENEFIT DISTRICT



PROPOSED NORTHGATE 4TH ADDITION LOTS FOR REFERENCE ONLY



Baughman Company, P.A. 315 Ellis St. Wichita, KS 67211 P 316-262-7271 F 316-262-0149
ENGINEERING | SURVEYING | PLANNING | LANDSCAPE ARCHITECTURE

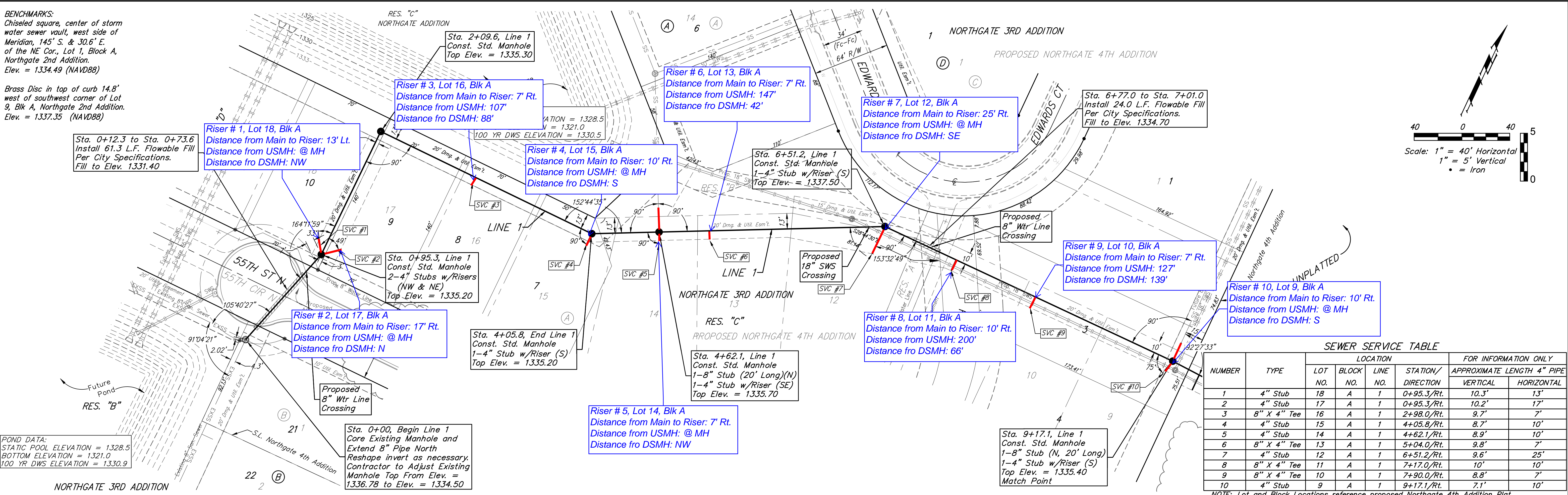
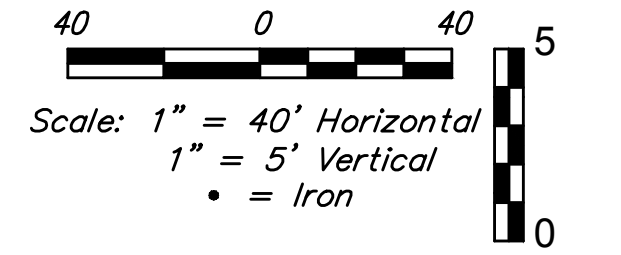


BENCHMARKS:
Chiseled square, center of storm water sewer vault, west side of Meridian, 145' S. & 30.6' E. of the NE Cor., Lot 1, Block A, Northgate 2nd Addition.
Elev. = 1334.49 (NAVD88)

Brass Disc in top of curb 14.8' west of southwest corner of Lot 9, Blk A, Northgate 2nd Addition.
Elev. = 1337.35 (NAVD88)

Sta. 0+12.3 to Sta. 0+73.6
Install 61.3 L.F. Flowable Fill Per City Specifications.
Fill to Elev. 1331.40

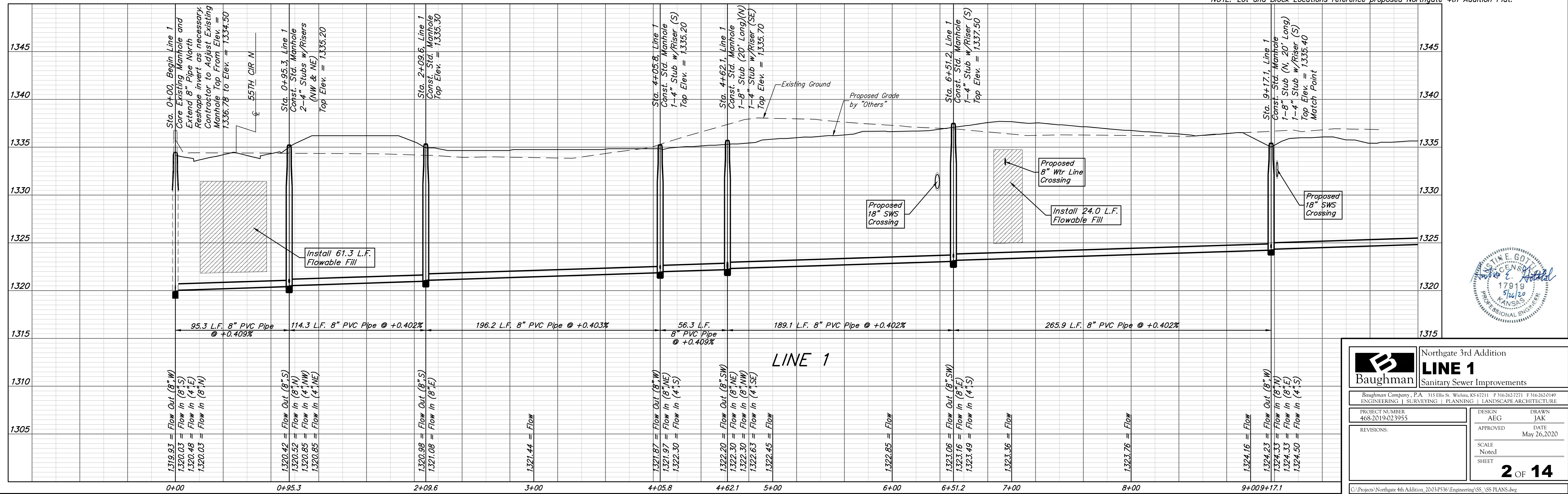
POND DATA:
STATIC POOL ELEVATION = 1328.5
BOTTOM ELEVATION = 1321.0
100 YR DWS ELEVATION = 1330.9



SEWER SERVICE TABLE

NUMBER	TYPE	LOCATION				FOR INFORMATION ONLY	
		LOT NO.	BLOCK NO.	LINE NO.	STATION/DIRECTION	APPROXIMATE LENGTH 4" PIPE	
						VERTICAL	HORIZONTAL
1	4" Stub	18	A	1	0+95.3/Rt.	10.3'	13'
2	4" Stub	17	A	1	0+95.3/Rt.	10.2'	17'
3	8" X 4" Tee	16	A	1	2+98.0/Rt.	9.7'	7'
4	4" Stub	15	A	1	4+05.8/Rt.	8.7'	10'
5	4" Stub	14	A	1	4+62.1/Rt.	8.9'	10'
6	8" X 4" Tee	13	A	1	5+04.0/Rt.	9.8'	7'
7	4" Stub	12	A	1	6+51.2/Rt.	9.6'	25'
8	8" X 4" Tee	11	A	1	7+17.0/Rt.	10'	10'
9	8" X 4" Tee	10	A	1	7+90.0/Rt.	8.8'	7'
10	4" Stub	9	A	1	9+17.1/Rt.	7.1'	10'

NOTE: Lot and Block Locations reference proposed Northgate 4th Addition Plat.



Baughman Northgate 3rd Addition
LINE 1
Sanitary Sewer Improvements

Baughman Company, P.A. 315 Ellis St. Wichita, KS 67211 P 316-262-7271 F 316-262-0149
ENGINEERING | SURVEYING | PLANNING | LANDSCAPE ARCHITECTURE

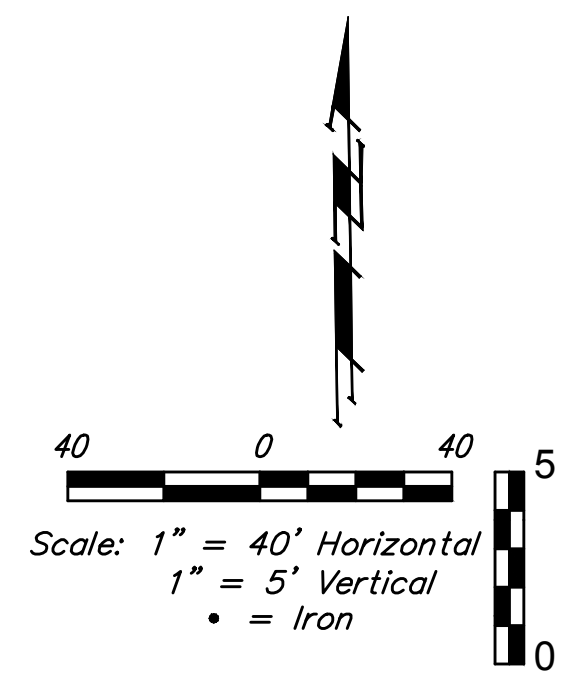
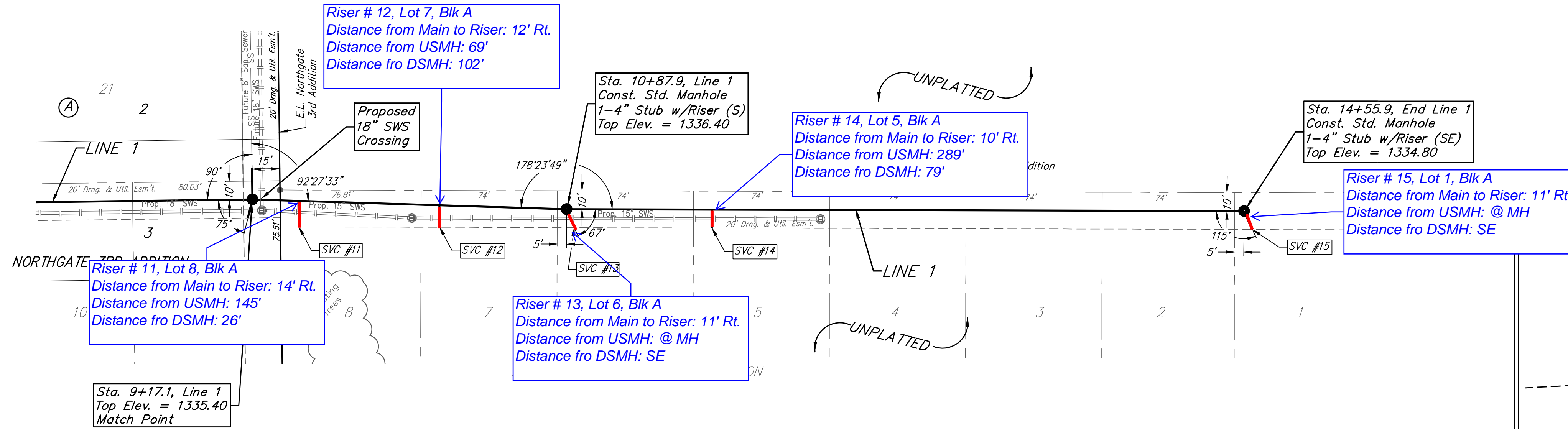
PROJECT NUMBER: 468-2019-023955
DESIGN: AEG
DRAWN: JAK
APPROVED: [Signature]
DATE: May 26, 2020
SCALE: Noted
SHEET: 2 OF 14

REVISIONS:

C:\Projects\Northgate 4th Addition_2003-P336\Engineering\SS_VSS PLANS.dwg

BENCHMARKS:
 Chiseled square, center of storm water sewer vault, west side of Meridian, 145' S. & 30.6' E. of the NE Cor., Lot 1, Block A, Northgate 2nd Addition.
 Elev. = 1334.49 (NAVD88)

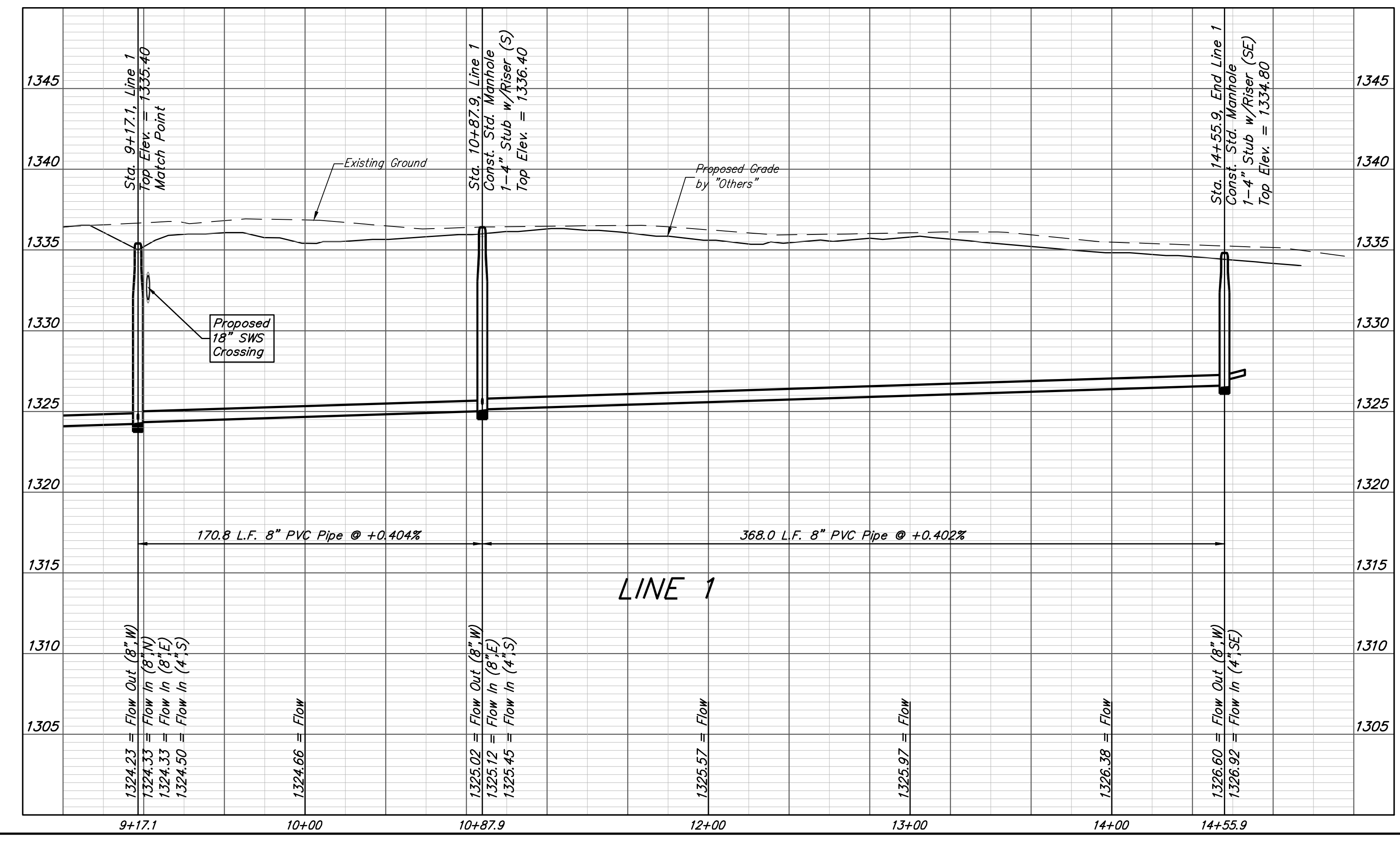
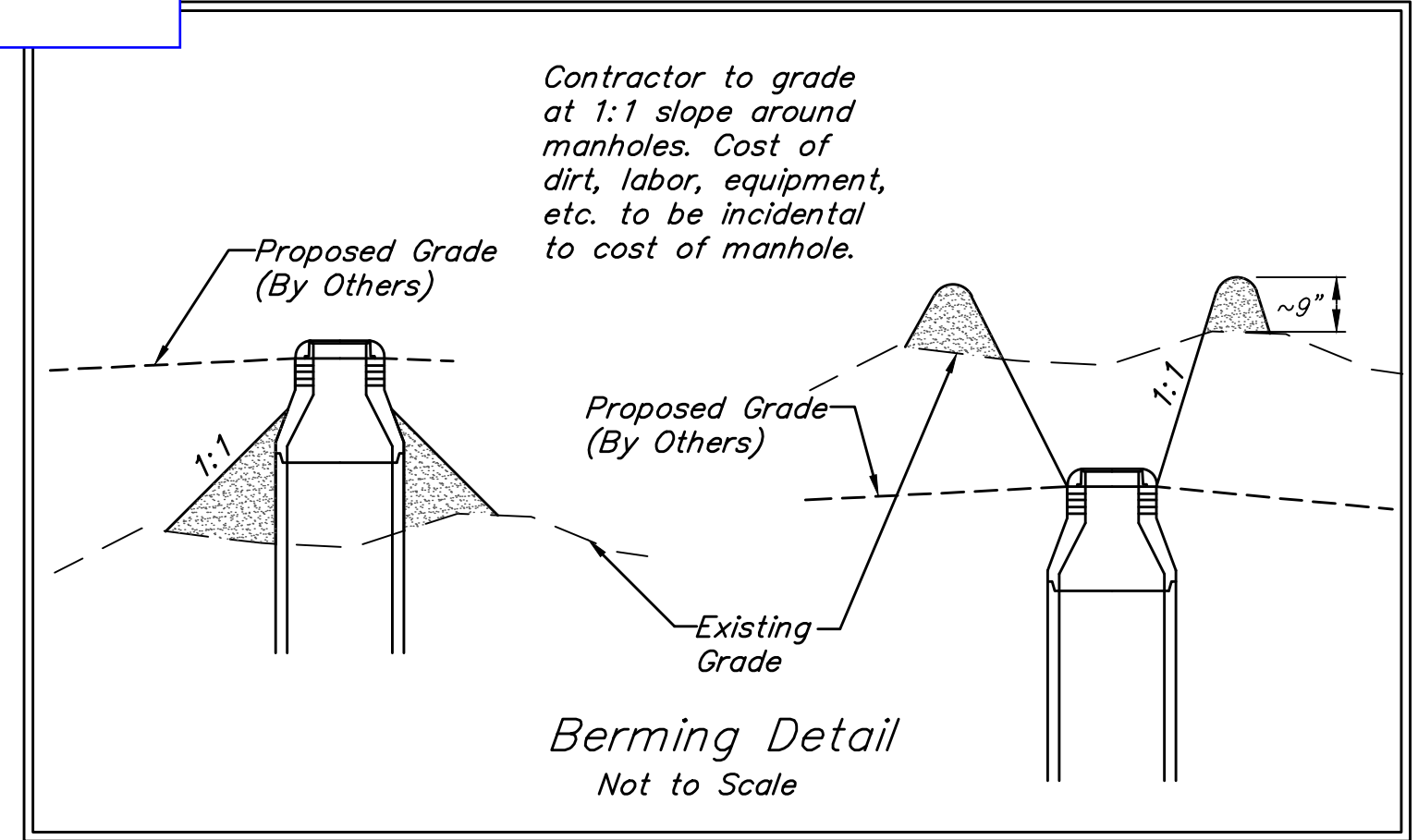
Brass Disc in top of curb 14.8' west of southwest corner of Lot 9, Blk A, Northgate 2nd Addition.
 Elev. = 1337.35 (NAVD88)



SEWER SERVICE TABLE

NUMBER	TYPE	LOCATION			FOR INFORMATION ONLY		
		LOT NO.	BLOCK NO.	LINE NO.	STATION/DIRECTION	APPROXIMATE LENGTH 4" PIPE	
11	8" X 4" Tee	8	A	1	9+43.0/Rt.	7'	14'
12	8" X 4" Tee	7	A	1	10+19.0/Rt.	6.5'	12'
13	4" Stub	6	A	1	10+87.9/Rt.	6.8'	11'
14	8" X 4" Tee	5	A	1	11+67.0/Rt.	6.3'	10'
15	4" Stub	1	A	1	14+55.9/Rt.	3.6'	11'

NOTE: Lot and Block Locations reference proposed Northgate 4th Addition Plat.



Baughman Northgate 3rd Addition
LINE 1
 Sanitary Sewer Improvements

PROJECT NUMBER: 468-2019-023955
 DESIGN: AEG
 DRAWN: JAK
 APPROVED: [Signature]
 DATE: May 26, 2020
 SCALE: Noted
 SHEET: 3 OF 14

REVISIONS: