

GENERAL NOTES:

- The Contractor shall comply with all applicable safety regulations. All construction shall be completed following current City Standard Specifications and Special Provisions.
- Contractor will be required to provide notice to utility companies a minimum of seventy-two (72) hours prior to any excavation, as follows:
Kansas One-Call 687-2470
The Contractor must notify the following in case of an emergency:
AT&T 1-800-246-8464
Black Hills Energy 1-800-694-8989
City of Wichita Water & Sewer 1-316-219-8921
City of Wichita Stormwater 1-316-268-4090
City of Wichita Traffic 1-316-268-4034
Cox Communications 1-888-249-3530
Kansas Gas Service 1-888-482-4950
Evergy 1-800-544-4857
- Utility service lines, poles, etc. are to be adjusted as necessary by others prior to construction unless the plans specifically call for their adjustment by the Contractor or unless the plans specifically identify a utility to be adjusted by its owner during construction. Existing utilities and their location, as shown on the plans, represent the best information obtainable for design. The Contractor will be required to work around existing utilities within the right-of-way which do not conflict with proposed construction.
- Rubble from the removal of miscellaneous structures and excess excavation which is to be wasted shall be disposed of on sites to be provided by the Contractor. These sites shall be approved by the Engineer as to suitability, appearance and site location. Locations, in the opinion of the Engineer, that will leave an unsightly appearance will not be approved. All disposal sites must be approved by the Kansas Department of Health and Environment. Material either stockpiled or disposed of in a flood plain will require a Kansas State Board of Agriculture permit. Any material dumped in waters of the United States or wetlands is subject to U.S. Corps of Engineers permitting regulations. Any material buried or stockpiled beyond approved construction limits will require additional archaeological investigations unless buried in a previously approved borrow location.
- Trees and shrubs in public right-of-way which are in direct conflict with proposed new construction shall be removed by the Contractor with the City Engineer's approval. Trees and shrubs which are not in direct conflict with proposed new construction shall be saved and protected from damage. Contractor to field verify extent of tree removal prior to construction.
- The Contractor shall give all property owners and/or tenants of developed property abutting the construction of this project a minimum of ten (10) days notice prior to start of construction.
- The Contractor shall be responsible for preserving property irons. The Contractor will be required to re-establish any property irons which are damaged or destroyed by his construction operations. Such irons shall be re-established by a licensed land surveyor in accordance with state laws
- All elevations shown are NAVD88.
- All traffic control devices in the work zone (including markings and signs) and their installation and maintenance shall comply with the latest edition of the Manual on Uniform Traffic Control Devices (MUTCD). All traffic control devices in the traveled way or clear zone shall be crashworthy (NCHRP Report 350 or MASH compliant). http://safety.fhwa.dot.gov/roadway_dept/policy_guide/road_hardware/wzd
- All construction equipment, including vehicles, materials, and debris, shall be stored outside of the clear zone. Where this cannot be achieved the contractor shall place appropriate signs, object identifiers, and/or barricades in compliance with the MUTCD.
- Except when required for safety, traffic control shall not block any lanes or sidewalks when work is not being performed.
- Traffic lane blockages more than four hours may need permitting. Call 316-268-4501 to determine requirements and request permit.
- A saw cut of at least one-half the depth of existing surface courses or one-fourth the depth of the existing total pavement thickness shall be provided at locations where proposed construction abuts the existing surface course or pavement for which partial removal of that surface or pavement is required. Saws cut joint to facilitate removal within three (3) feet of existing joints will not be permitted and for such instances the limits of removal shall extend to the existing joint. Such saw cuts will not be paid for directly and this cost shall be considered as subsidiary to the removal of the surface or pavement.

- Limits of earthwork shall match existing ground elevations at the right-of-way line unless otherwise noted on the plans with a new finished grade elevation. When a new finished grade elevation is shown, the earthwork shall extend one foot beyond the right-of-way line and then slope up or down using permissible slopes to match the existing ground surface.
- All existing and proposed erosion control measures including silt fencing, erosion control mat, straw bales, inlet barriers, and const. entrance shall be maintained throughout construction by the contractor and until project is accepted by the City of Wichita. The on-site engineer shall complete weekly reports on the status of erosion control measures. The contractor shall be required to comply with maintenance and/or replacement of erosion control measures as determined by the on-site engineer until project is accepted by City of Wichita. Maintenance and/or replacement of erosion control measures to be paid by L.S. bid item "Maintain Existing BMPs".
- All disturbed areas are to be seeded as follows:
Seed -- Rye grass; 5 lbs./1000 Sq. Ft.
All costs associated with seeding including mobilization, preparation of ground, seeding, fertilizing, mulching, etc. shall be included in the L.S. bid item "Seeding".
- The developers for this project are Jay W. Russell,
P.O. Box 75337, Wichita, KS 67272
(316)722-2417 jrussellco.com and Ritchie Associates, Kevin Mullen, (316)684-7300.
- Sidewalk construction and project seeding shall be completed after the installation of Evergy trenching and conduit installation. Contact Heide Bryan, Evergy, 261-6354
- The Northgate Addition plat was completed in NGVD29 datum. The Northgate 2nd & 4th Addition plats were completed in NAVD88 datum. These plans are in NAVD88 datum. To convert from NGVD29 to NAVD88 add 0.39'. The connecting street elevation was designed and built using NGVD29 datum and has been converted to NAVD88.

Benchmarks

BM #1: "□" Cut on top of curb adjacent to the SE Cor. Lot 28, Block A, Northgate Addition.
Elev. = 1339.43 NAVD88

BM #2: "□" Cut on top of curb, adjacent to the SW Cor. Lot 17, Block D, Northgate Addition.
Elev. = 1338.47 NAVD88

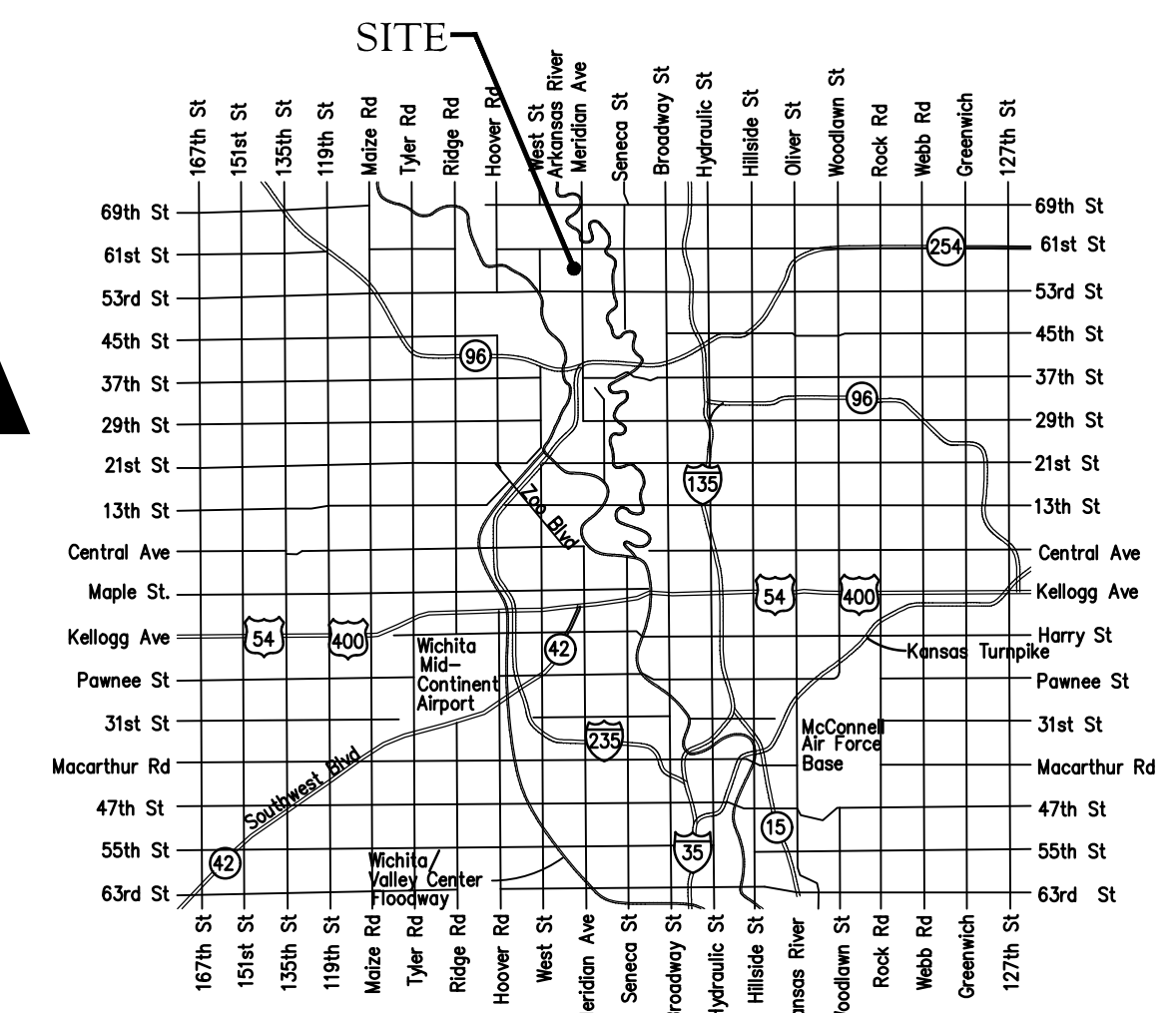
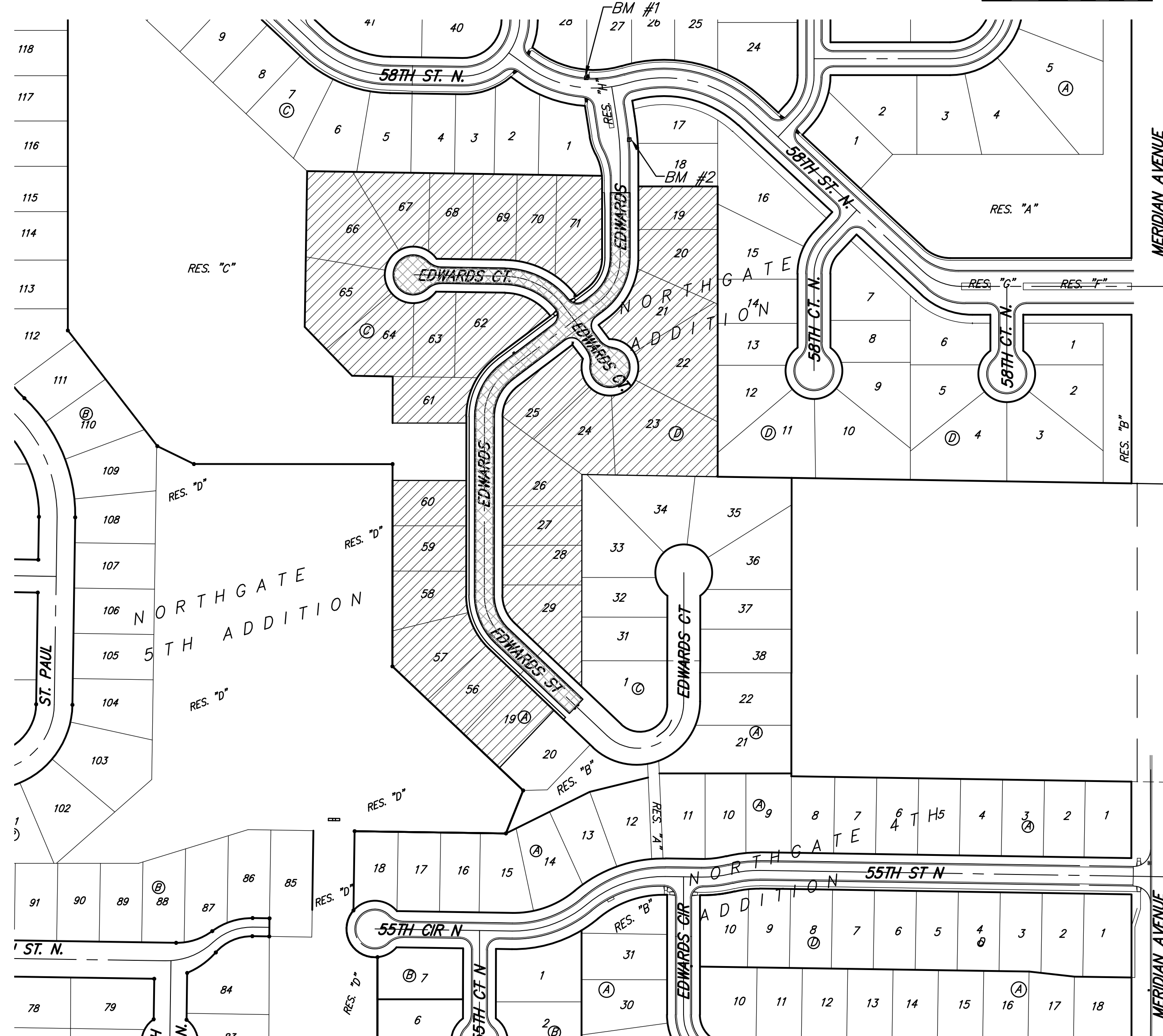
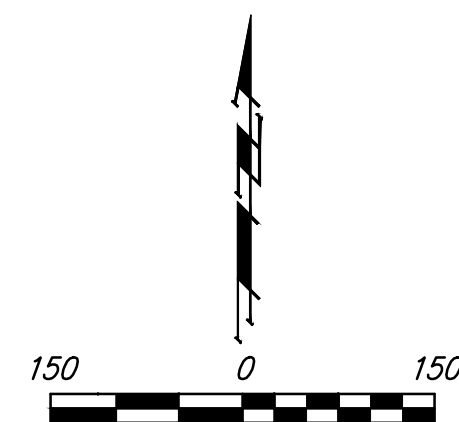
Project Earthwork Totals
Excavation = 974 C.Y.
Loose Fill = 745 C.Y.
Compacted Fill = 59 C.Y.
Borrow Exc. = 37 C.Y.

Total Project Length
1,495 L.F. = 0.29 Miles

STREET PAVING FOR EDWARDS to serve **NORTHGATE ADDITION & NORTHGATE 4th ADD. Ph. 4A**

CITY OF WICHITA, KANSAS
Edwards, from the north line of Lot 71, Block C, south, southwesterly, southerly, and southeasterly to the south line of Lot 19, Block A Edwards Ct, from the northwest line of Edwards, north and west to and including the cul-de-sac (Lots 62 through 71, Block C) Edwards Ct., from the southeast line of Edwards, southeast to and including the cul-de-sac (Lots 21 through 25, Block D)

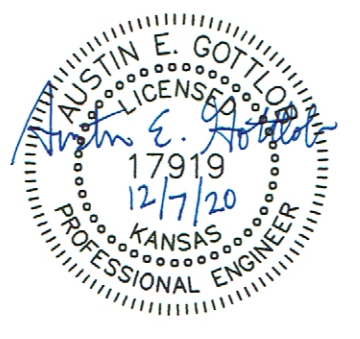
Gary Janzen, P.E. City Engineer
Project Number
448-2020-085603
O.C.A. Number
810118



Vicinity Map

Sheet Index

Title Sheet	1
Edwards	2-4
Edwards Ct. (Lots 52-71, Block C)	5
Edwards Ct. (Lots 21-25, Block D)	6
Erosion Control Plan	7
Asphalt Paving Detail	8
Curb & Gutter Detail	9
Sign Detail	10
Valley Gutter Detail	11
Wheelchair Ramp Detail	12
Pavement Underdrain Detail	13
Erosion Control BMP Details	14-18
Street X-Sections	19-24
Coordinate Sheet	25
Copy of Plat	26-28



Benefit District Proposed Streets

December 2020

Baughman Company, P.A. 315 Ellis St. Wichita, KS 67211 P 316-262-7271 F 316-262-0143
ENGINEERING | SURVEYING | PLANNING | LANDSCAPE ARCHITECTURE

E:\Projects\Northgate\Engineering\Phase 4A\STR 2008-E639\STR.dwg