

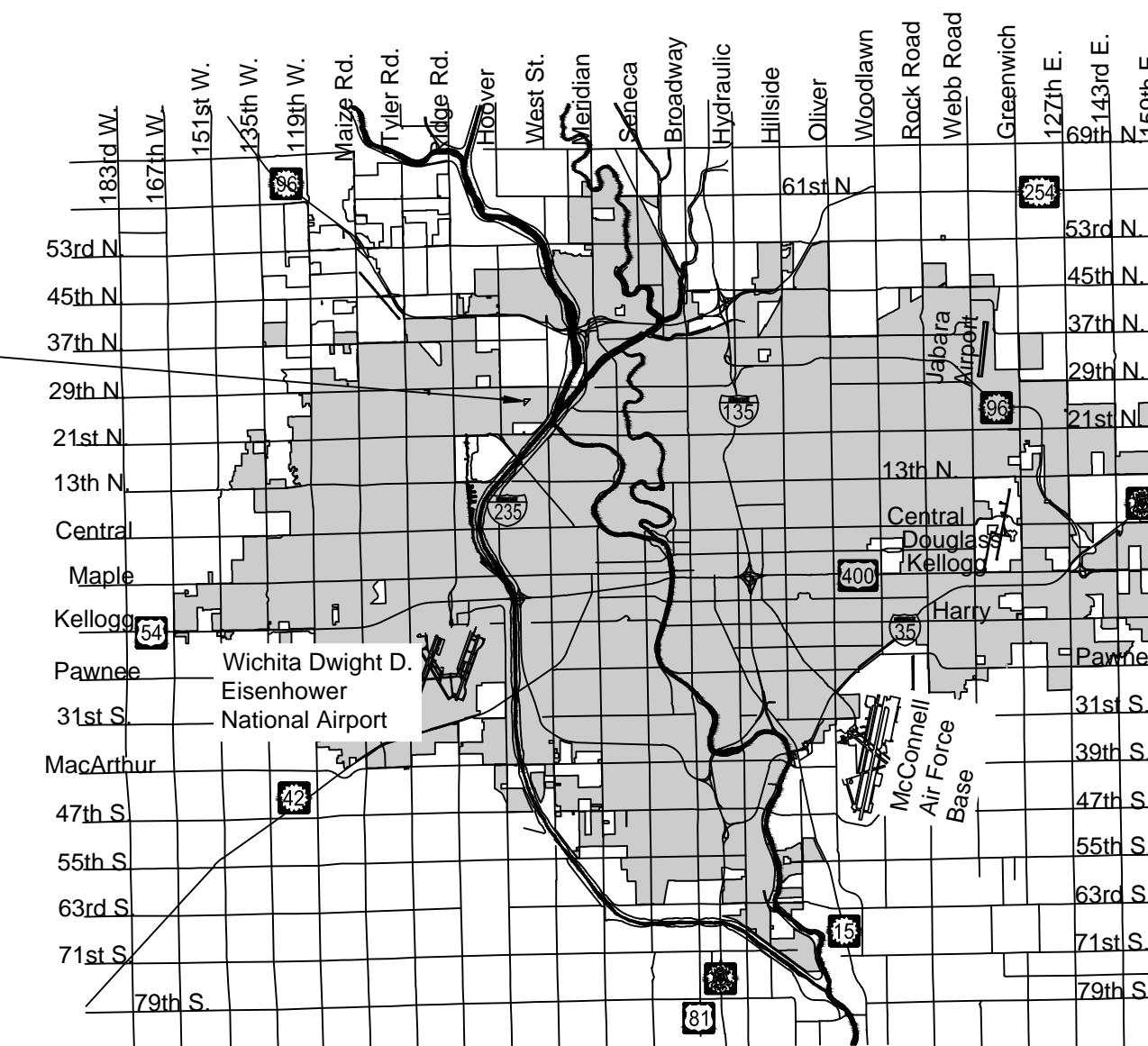
# SANITARY SEWER EXTENSION

to serve

## Emerald Bay 5th Addition CITY OF WICHITA, KANSAS

Gary Janzen, P.E. City Engineer  
Project Number 468-2019-007808  
O.C.A. NO. 744505

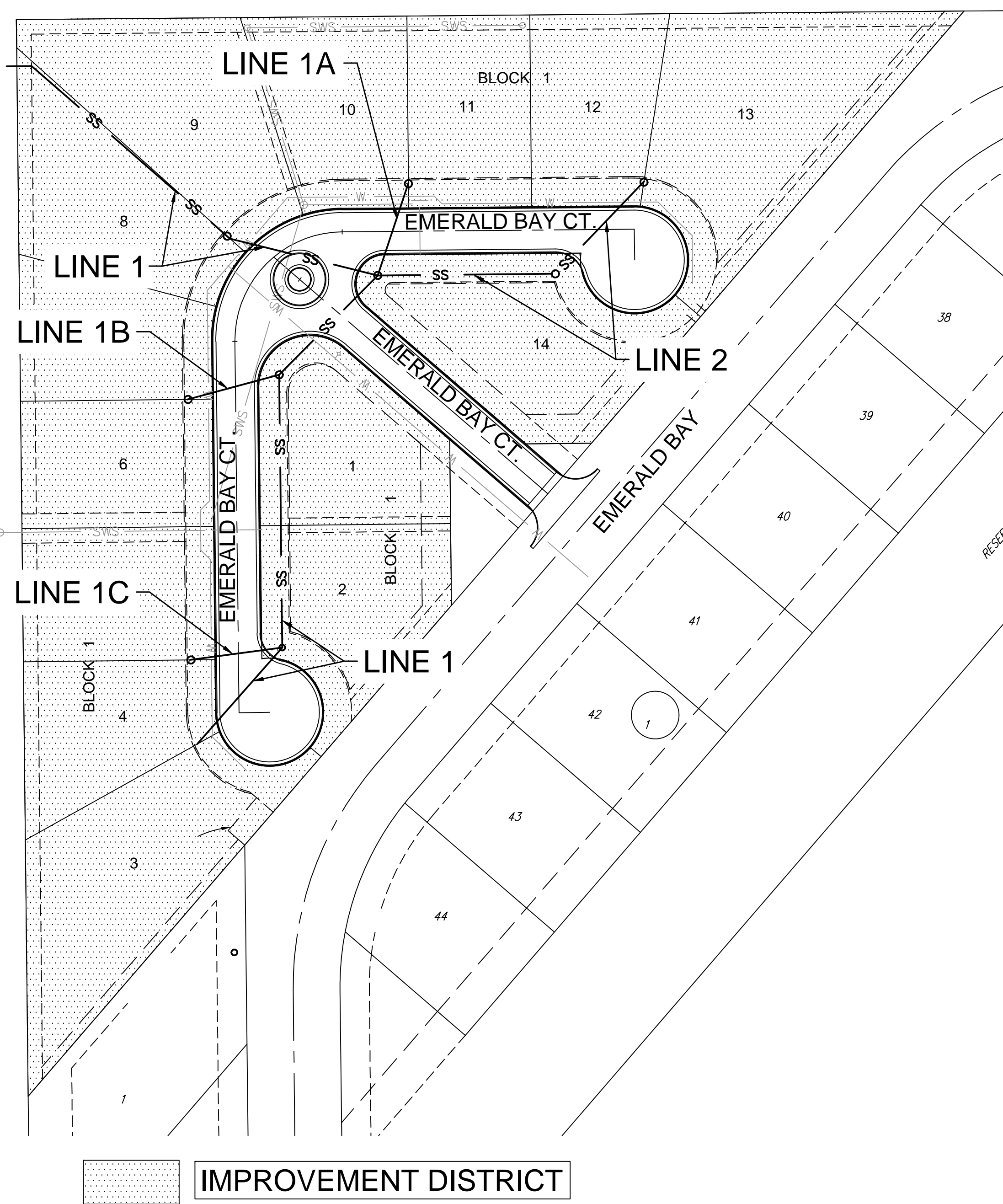
PROJECT  
LOCATION



Vicinity Map

McCullough - Contractor  
B. Woods - City of Wichita, Field Project Engineer  
R. Carillo - City of Wichita, Inspector  
As-built  
Release Date (for connection purposes only): 2/7/2020  
Completion Date:  
pdf: apr 1/19/21

BUILT PER PLAN



IMPROVEMENT DISTRICT

### GENERAL NOTES:

- The Contractor shall comply with all applicable safety regulations. All construction shall be completed following current City Standard Specifications and Special Provisions.
- Contractor will be required to provide notice to utility companies a minimum of seventy-two (72) hours prior to any excavation, as follows:  
  
Kansas One-Call 687-2470  
  
The Contractor must notify the following in case of an emergency:  
  
AT&T 1-800-246-8464  
Black Hills Energy 1-800-694-8989  
City of Wichita Water & Sewer Dept. 1-316-219-8921  
City of Wichita Stormwater 1-316-268-4090  
City of Wichita Traffic 1-316-268-4034  
Cox Communications 1-888-249-3530  
Kansas Gas Service 1-888-482-4950  
Westar Energy 1-800-544-4857
- Utility service lines, poles, etc. are to be adjusted as necessary by others prior to construction unless the plans specifically call for their adjustment by the Contractor or unless the plans specifically identify a utility to be adjusted by its owner during construction. Existing utilities and their location, as shown on the plans, represent the best information obtainable for design. The Contractor will be required to work around existing utilities within the right-of-way which do not conflict with proposed construction.
- Rubble from the removal of miscellaneous structures and excess excavation which is to be wasted shall be disposed of on sites to be provided by the Contractor. These sites shall be approved by the Engineer as to suitability, appearance and site location. Locations, in the opinion of the Engineer, that will leave an unsightly appearance will not be approved. All disposal sites must be approved by the Kansas Department of Health and Environment. Material either stockpiled or disposed of in a flood plain will require a Kansas State Board of Agriculture permit. Any material dumped in waters of the United States or wetlands is subject to U.S. Corps. of Engineers permitting regulations. Any material buried or stockpiled beyond approved construction limits will require additional archaeological investigations unless buried in a previously approved borrow location.
- Trees and shrubs in public right-of-way which are in direct conflict with proposed new construction shall be removed by the Contractor with the Engineer's approval. Trees and shrubs which are not in direct conflict with proposed new construction shall be saved and protected from damage.
- The Contractor shall give all property owners and/or tenants of developed property abutting the construction of this project a minimum of ten (10) days notice prior to start of construction.
- The Contractor shall be responsible for preserving property irons. The Contractor will be required to re-establish any property irons which are damaged or destroyed by his construction operations. Such irons shall be re-established by a licensed land surveyor in accordance with state laws.
- If traffic will be impacted by construction, a traffic control plan must be submitted and approved by the City Traffic Engineer, at [traffic@wichita.gov](mailto:traffic@wichita.gov) before construction can begin. The Contractor shall be responsible for all traffic control measures to facilitate construction. All construction zone markings and signage shall conform to the latest version of the Manual on Uniform Traffic Control Devices (MUTCD) as published by the US Dept. of Transportation, Federal Highway Administration. All costs associated with construction markings and signage shall be the Contractors responsibly.
- All elevations shown are NAVD 88.
- All areas disturbed during construction that will not be under proposed pavement shall be restored to match existing conditions.
- The Contractor shall protect from damage and support existing utilities through constructions as approved by the utility owner and the Engineer at the contractors expense.

- Contractor shall limit the extent of trench openings overnight and weekends to less than 50 feet.
- All stubs and plugged pipes shall be located with green plastic tape in the same manner as risers.
- Connecting to Existing Manholes:  
  
Prior to laying sewer lines using existing stubs in existing manholes, the Contractor shall expose and verify the elevation, grade and alignment of existing stubs and notify the Engineer of any deviation from the plans. Where connection to an existing manhole that does not have an existing stub or the stub is unusable due to elevation grade or alignment, the Contractor shall bore cut into existing manhole wall to make connection using approved water stop gasket, and reshape the existing manhole invert to provide smooth flow. The cost to connecting to existing manholes is incidental to the project.
- Contractor shall provide positive drainage away from all manhole covers.
- The Contractor shall prevent any construction debris from entering the existing sanitary sewer during construction.
- The Contractor shall be responsible for maintaining continuous flow of sewage through construction. Contractors proposed method for maintaining sewage flow shall be submitted and approved by the Sewer Maintenance Division (316-268-4073) prior to starting and by-passing of sewage flows.
- No shrink or swell factors have been applied to the earthwork quantities shown on this project. All earthwork quantities are based on raw surface volume comparisons.
- Excess dirt generated from installation of underground utilities is to remain on site and be stockpiled on Lot 1.

### Benchmarks

BENCHMARK #1: BRASS DISC ON TOP OF THE CURB AT THE POINT OF CURVATURE OF RESERVE D, BLOCK 1, EMERALD BAY ESTATES ELEVATION = 1325.99 (NAVD88, G12B)

BENCHMARK #2: BRASS DISC ON TOP OF THE CURB AT THE LOT LINE COMMON TO LOTS 40 AND 41, BLOCK 1, EMERALD BAY ESTATES ELEVATION = 1328.91 (NAVD88, G12B)

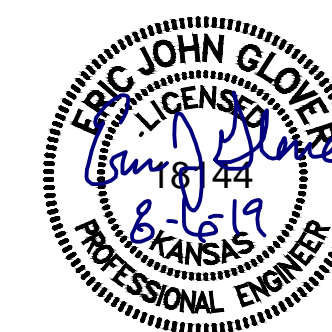
BENCHMARK #3: BRASS DISC ON TOP OF THE CURB AT THE POINT OF TANGENCY ON RESERVE E, SOUTHWEST OF LOT 44, BLOCK 1, EMERALD BAY ESTATES ELEVATION = 1328.11 (NAVD88, G12B)

### Sheet List Table

Drawing Number	Title	Revision Date
1	SS Titlesheet	
2	SITE CLEARING	
3	SS Line 1	
4	SS Lines 2, 1A, 1B, 1C	
5	BURN LOCATION	
6	Pre-Cast SS MH	
7	MH Frame & Cover	
8	Cleanout Riser	
9	SS BUBBLE MAP	
10	ADDITION BUBBLE MAP	
11	EROSION CONTROL PLAN	
12	SW-501	
13	SW-502	
14	SW-503	
15	SW-504	
16	SW-505	
17	PLAT	

August 2019

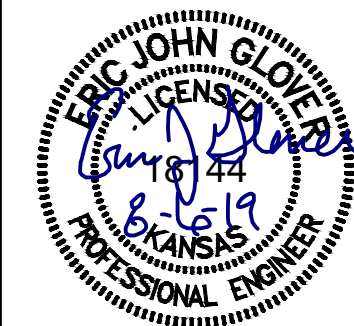
PLANS PREPARED BY





© 2019 GARVER, LLC  
 THIS DOCUMENT, ALONG WITH THE IDEAS AND DESIGNS CONVEYED HEREIN, SHALL BE CONSIDERED INSTRUMENTS OF PROFESSIONAL SERVICE AND ARE PROPERTY OF GARVER, LLC. ANY USE, REPRODUCTION, OR DISTRIBUTION OF THIS DOCUMENT, ALONG WITH THE IDEAS AND DESIGN CONTAINED HEREIN, IS PROHIBITED UNLESS AUTHORIZED IN WRITING BY GARVER, LLC OR EXPLICITLY ALLOWED IN THE GOVERNING PROFESSIONAL SERVICES AGREEMENT FOR THIS WORK.

8535 E. 21st St. N.  
 Suite 130  
 Wichita, KS 67206  
 (316) 264-8008



REV.	DATE	DESCRIPTION	BY



CITY OF WICHITA  
 WICHITA, KANSAS  
 EMERALD BAY 5th ADD.  
 SANITARY SEWER

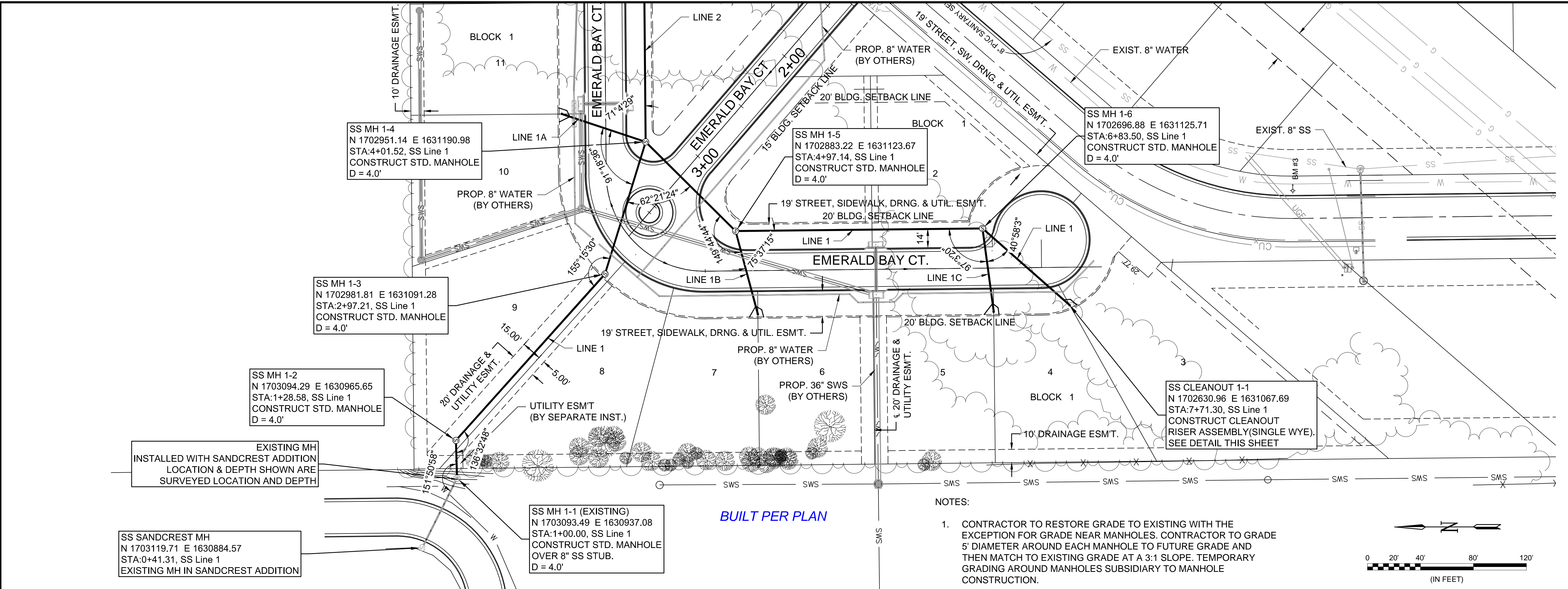
SS Line 1

JOB NO.: 19T41004  
 DATE: AUG. 2019  
 DESIGNED BY: EJG  
 DRAWN BY: DRS

BAR IS ONE INCH ON ORIGINAL DRAWING  
 IF NOT ONE INCH ON THIS SHEET, ADJUST SCALES ACCORDINGLY.

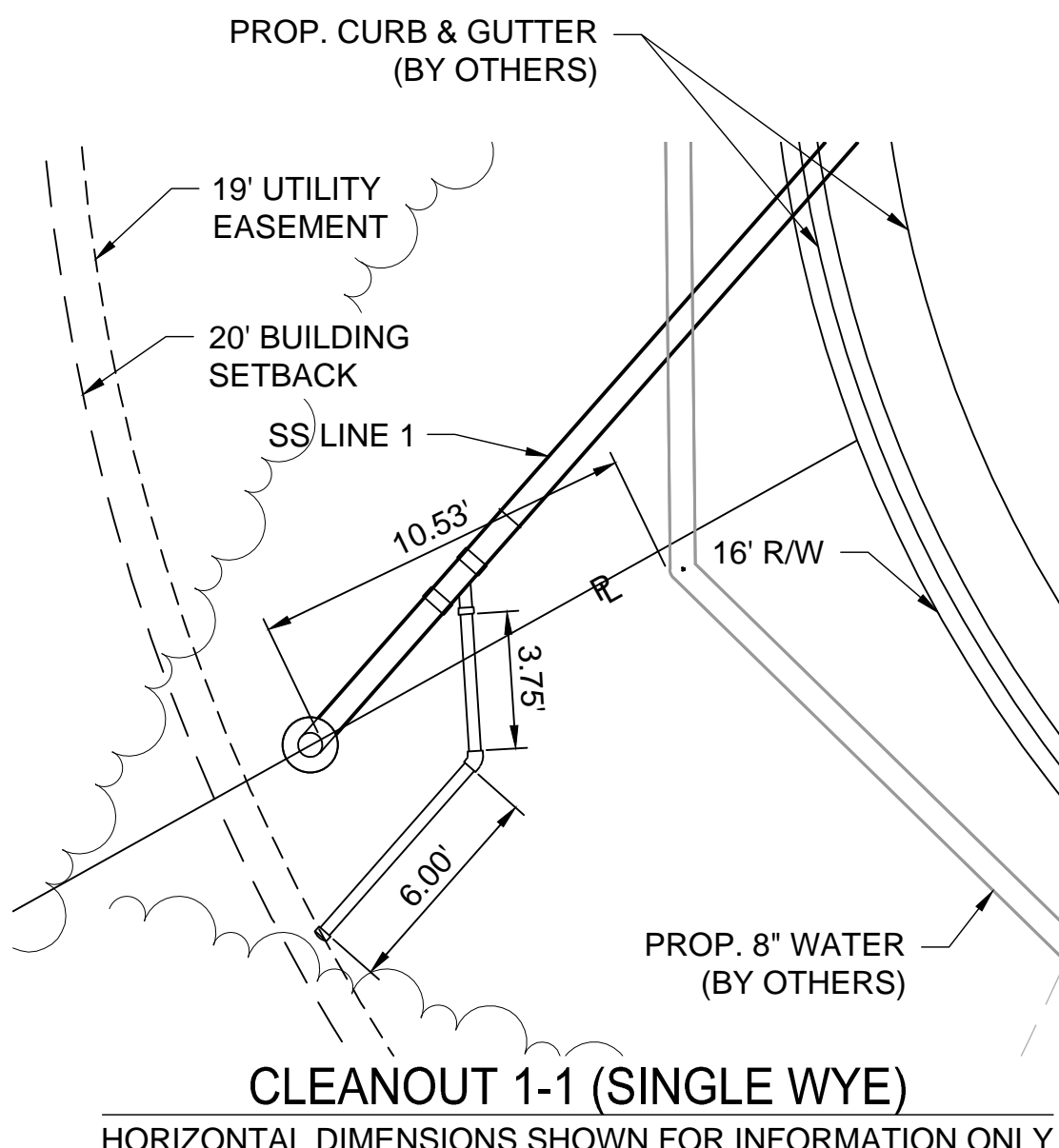
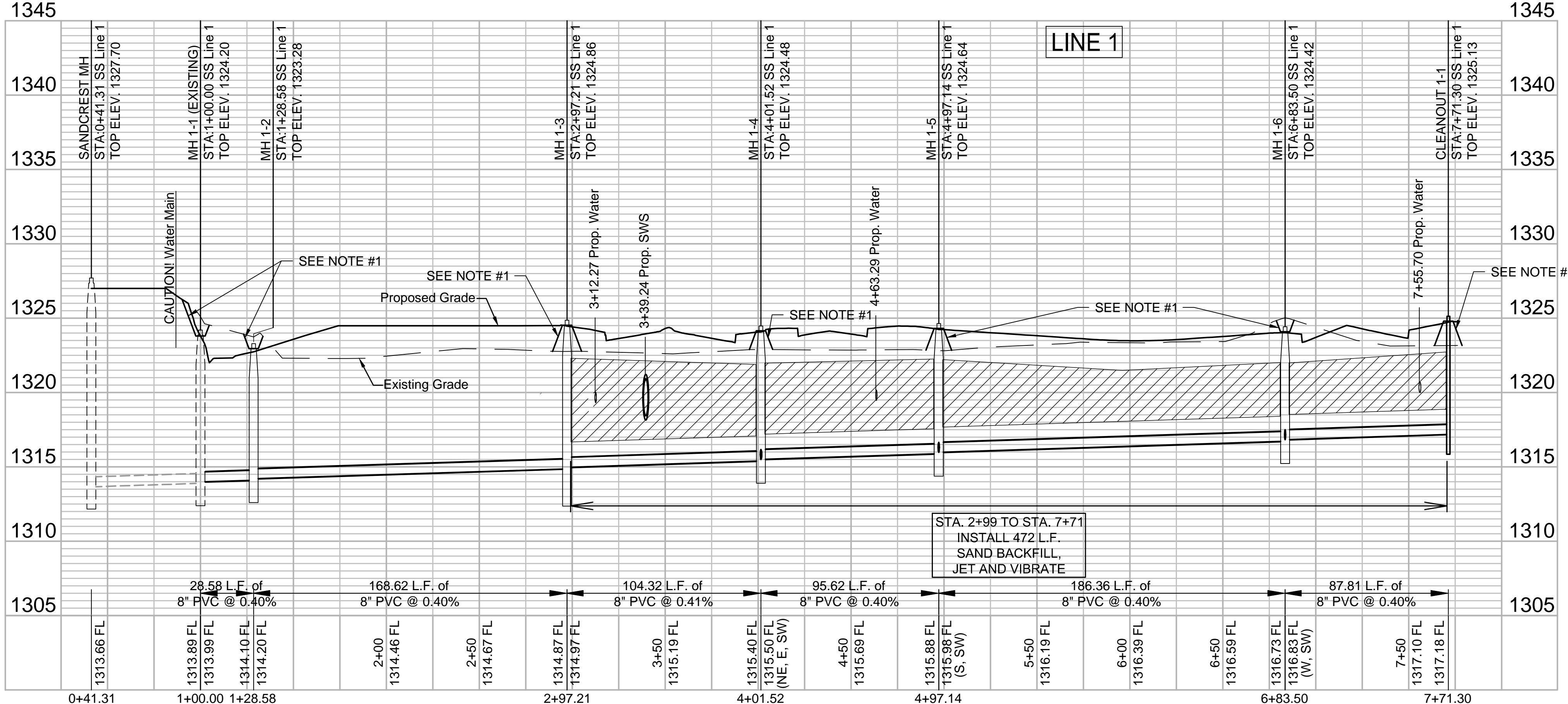
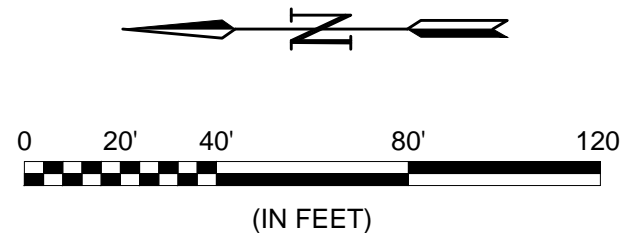
DRAWING NUMBER

SHEET NUMBER **3** OF **17**



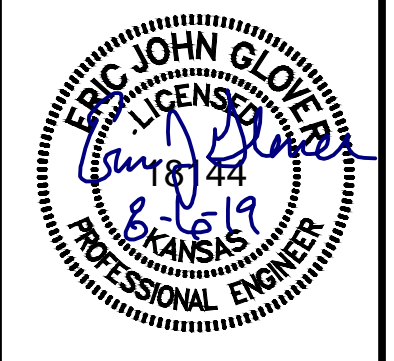
BUILT PER PLAN

- NOTES:
- CONTRACTOR TO RESTORE GRADE TO EXISTING WITH THE EXCEPTION FOR GRADE NEAR MANHOLES. CONTRACTOR TO GRADE 5' DIAMETER AROUND EACH MANHOLE TO FUTURE GRADE AND THEN MATCH TO EXISTING GRADE AT A 3:1 SLOPE. TEMPORARY GRADING AROUND MANHOLES SUBSIDIARY TO MANHOLE CONSTRUCTION.



File: L:\2019\19T41004 - Emerald Bay 5th Add Ph 1\Drawings\CDD\SS LINE 1.dwg Last Save: 8/6/2019 2:38 PM Last saved by: DRS/Standrich  
 Last plotted by: Standrich, Dairy R. Plot Style: --- Plot Scale: 1:2.5849 Plot Date: 8/8/2019 11:15 AM Plotter used: None

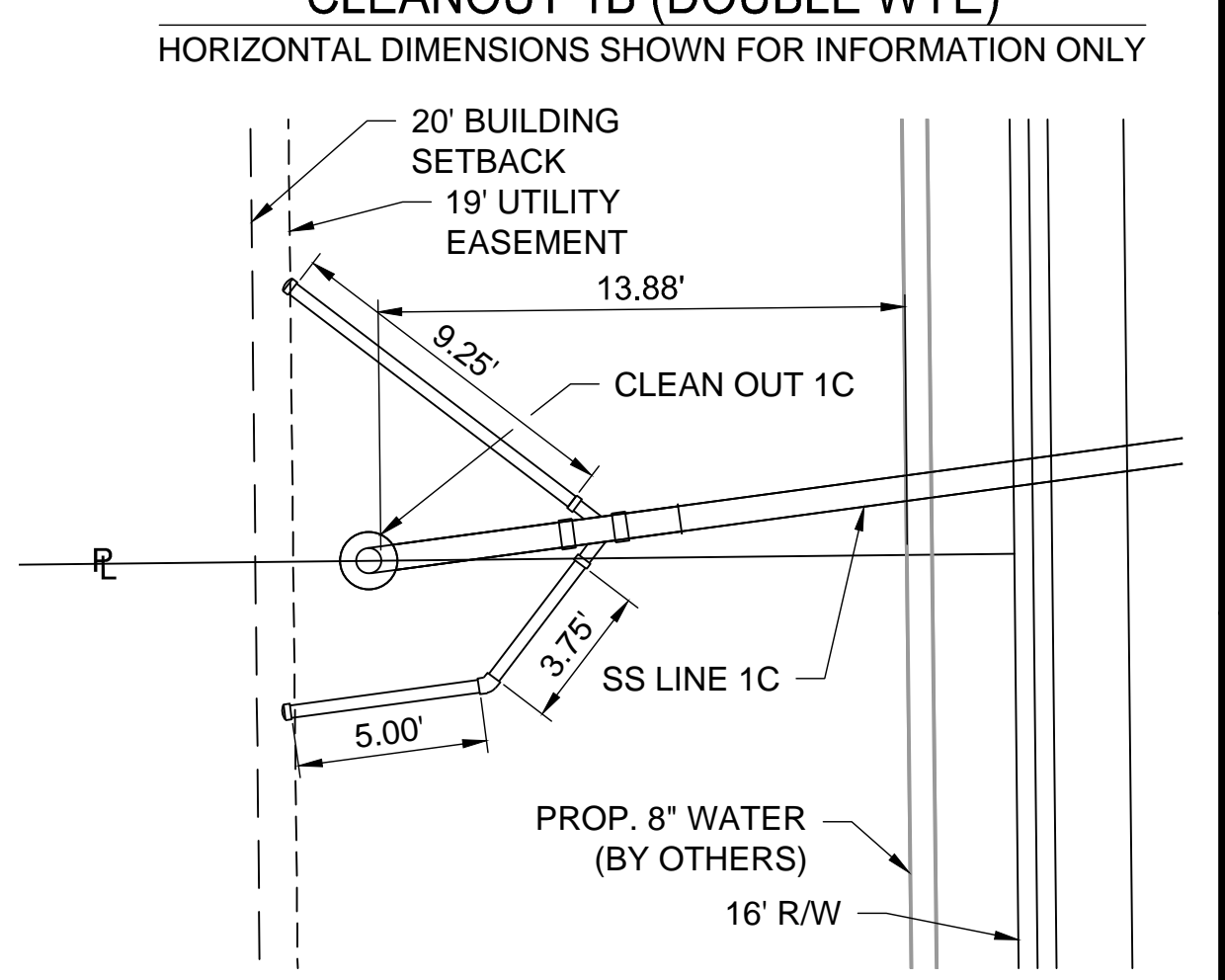
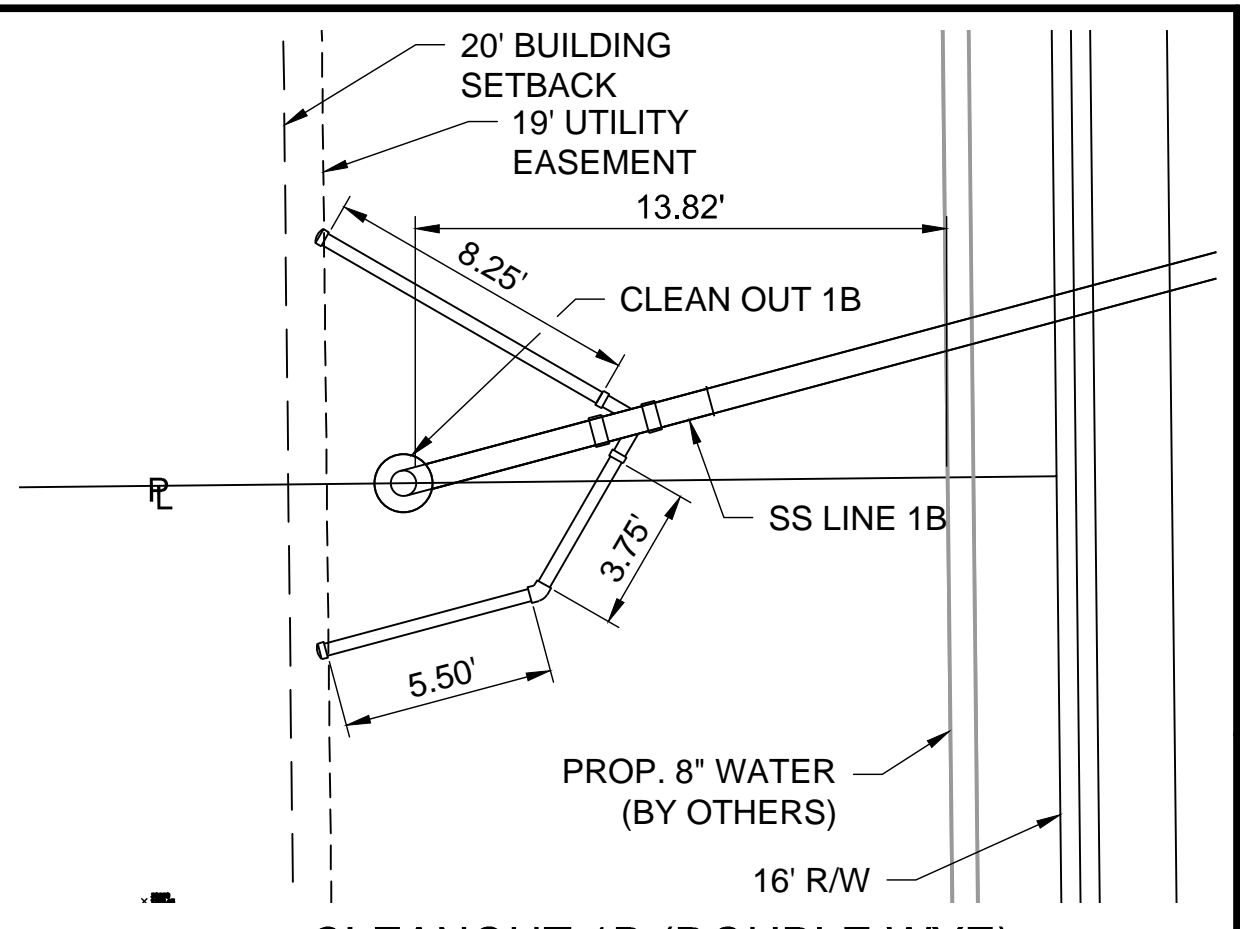
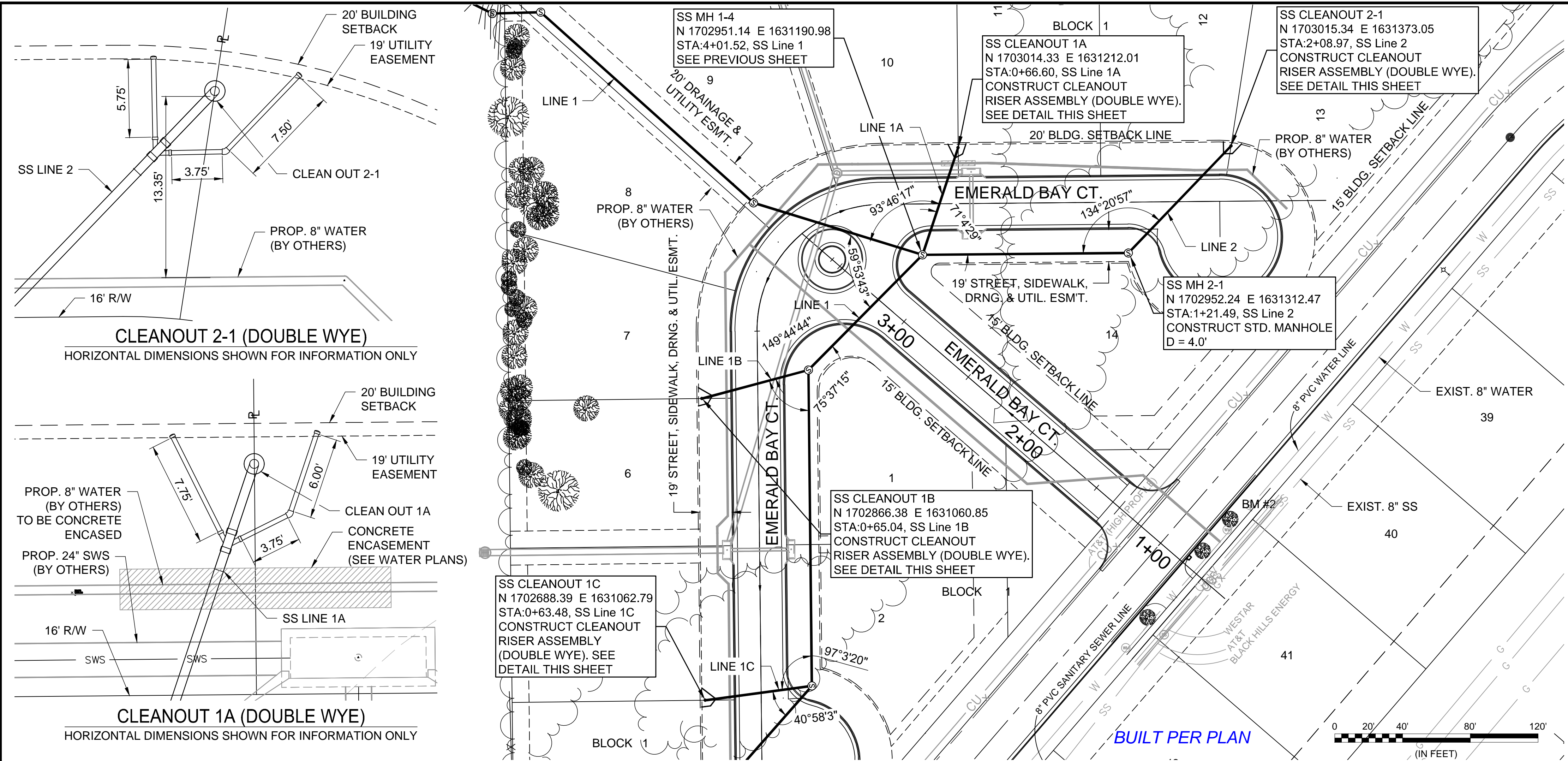
**GARVER**  
 © 2019 GARVER, LLC  
 THIS DOCUMENT, ALONG WITH THE IDEAS AND DESIGNS CONVEYED HEREIN, SHALL BE CONSIDERED INSTRUMENTS OF PROFESSIONAL SERVICE AND ARE PROPERTY OF GARVER, LLC. ANY USE, REPRODUCTION, OR DISTRIBUTION OF THIS DOCUMENT, ALONG WITH THE IDEAS AND DESIGN CONTAINED HEREIN, IS PROHIBITED UNLESS AUTHORIZED IN WRITING BY GARVER, LLC OR EXPLICITLY ALLOWED IN THE GOVERNING PROFESSIONAL SERVICES AGREEMENT FOR THIS WORK.  
 8535 E. 21st St. N.  
 Suite 130  
 Wichita, KS 67206  
 (316) 264-8008



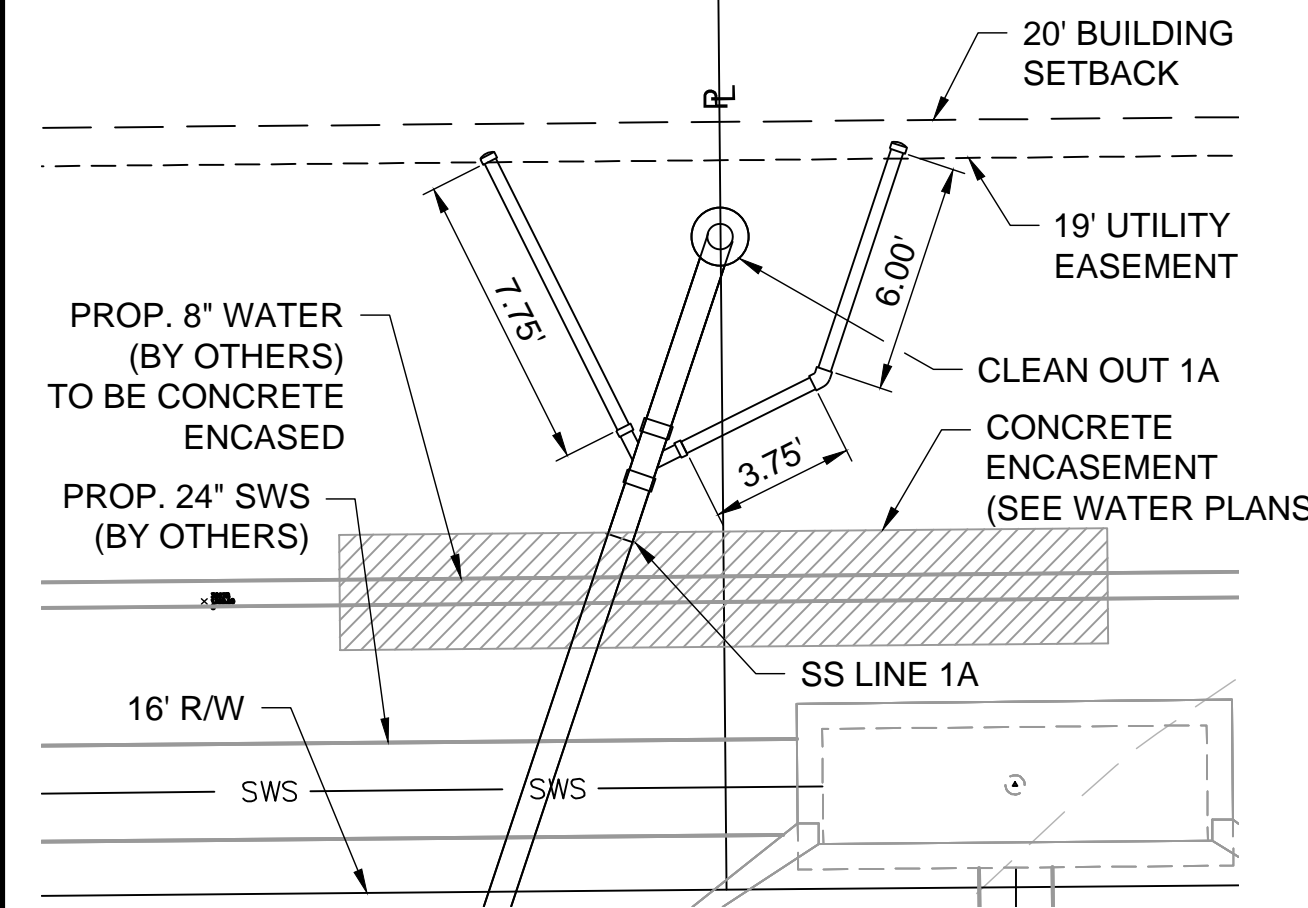
REV.	DATE	DESCRIPTION	BY

**CITY OF WICHITA**  
 WICHITA, KANSAS  
**EMERALD BAY 5th ADD.**  
**SANITARY SEWER**

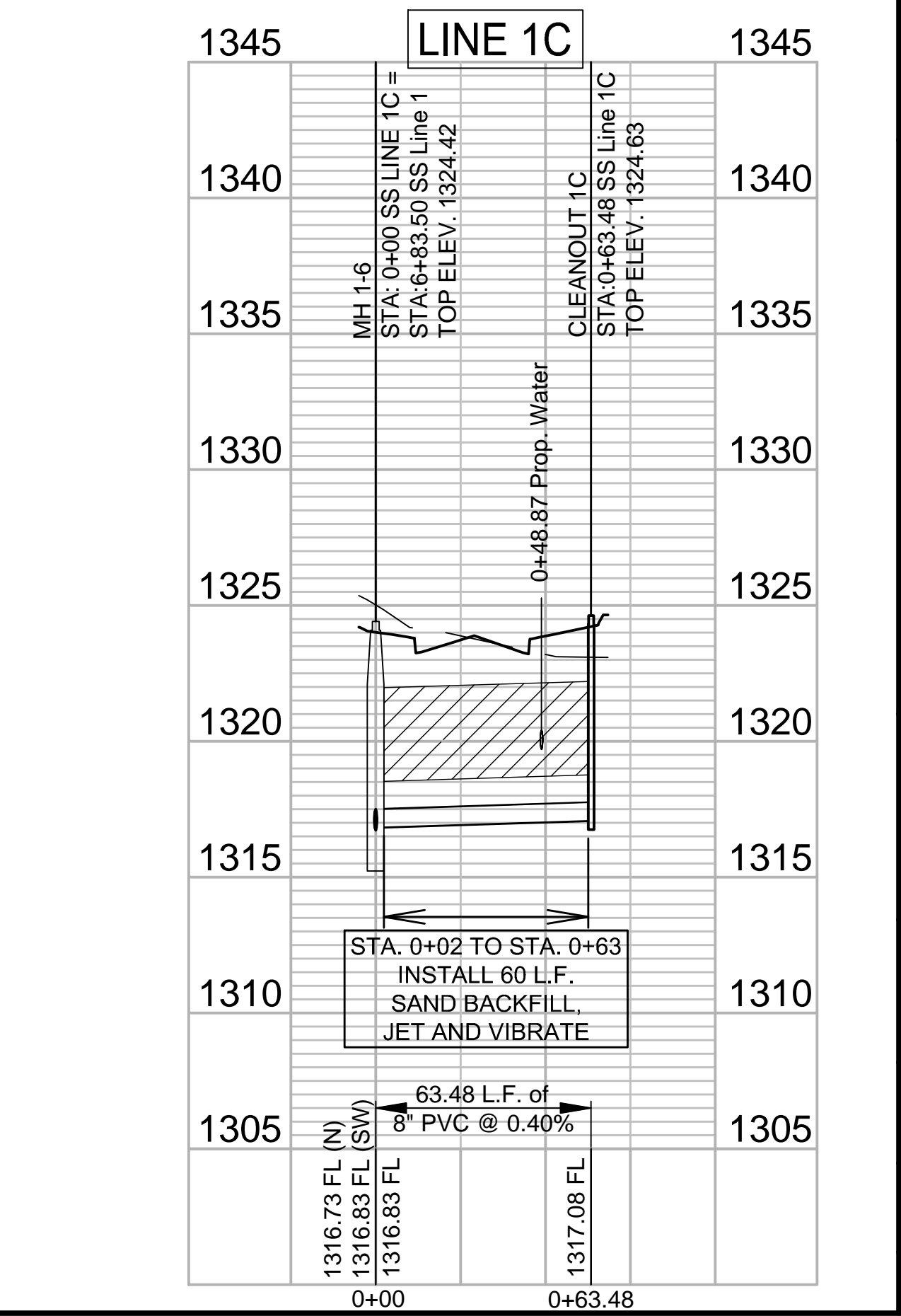
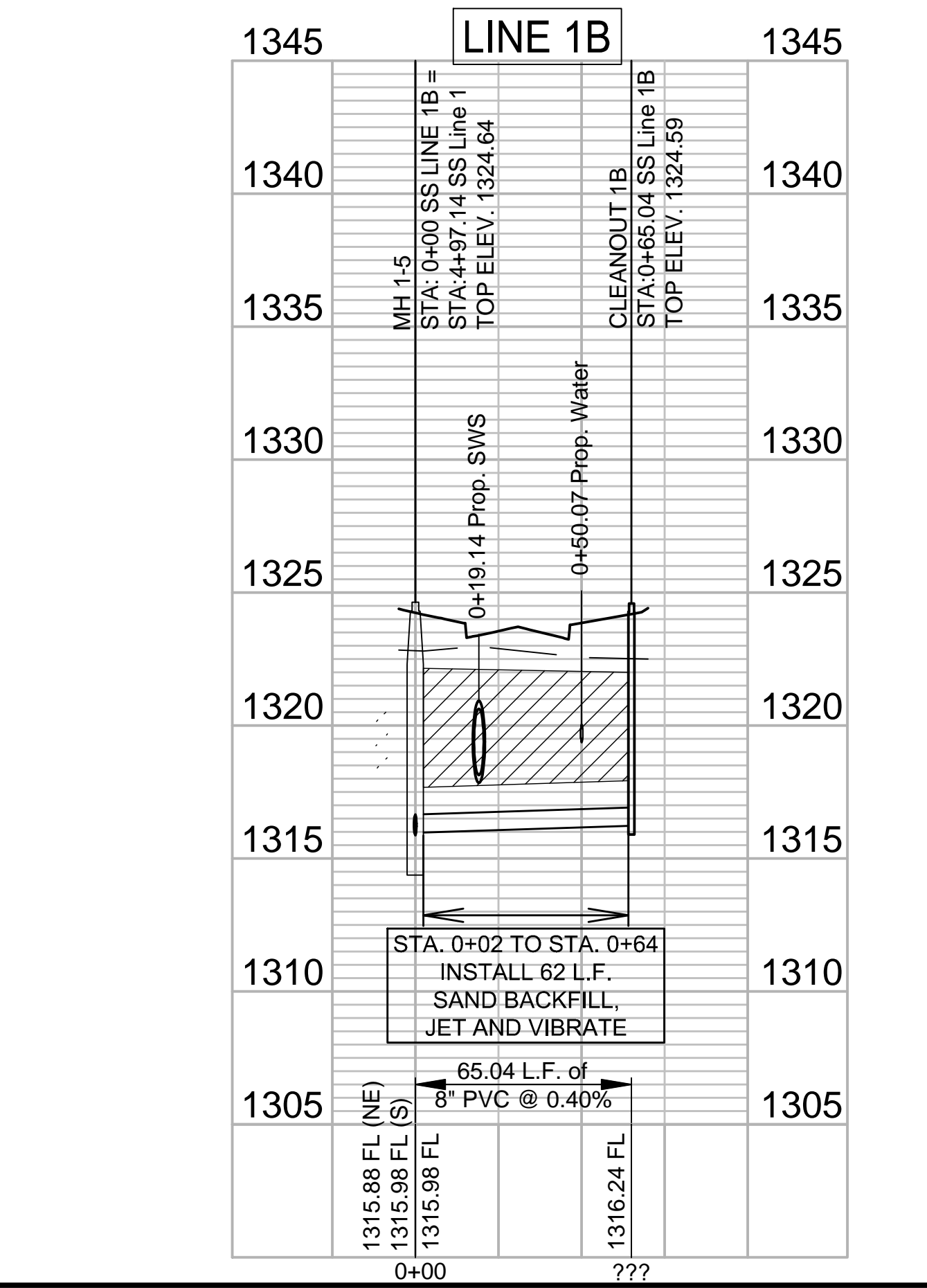
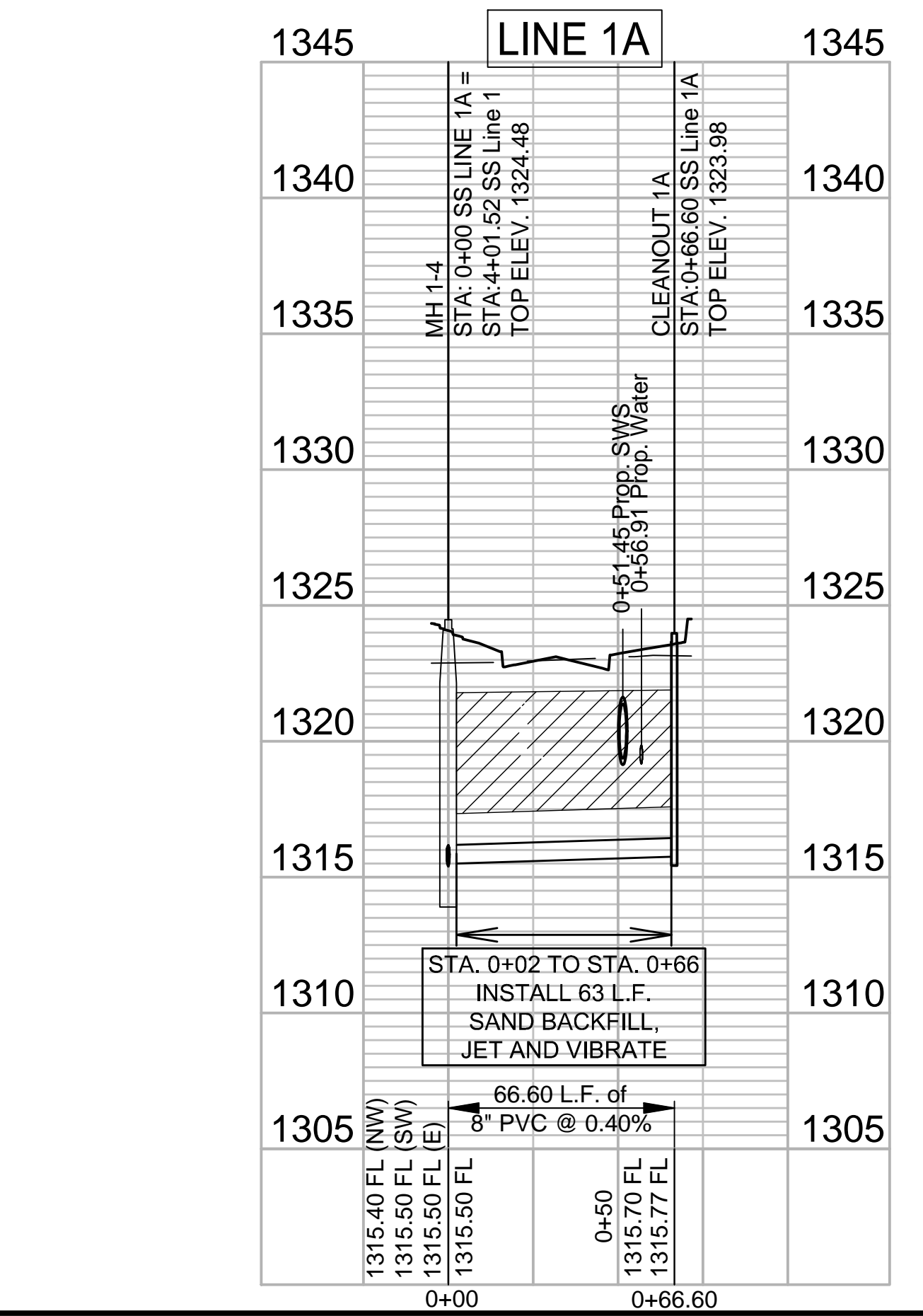
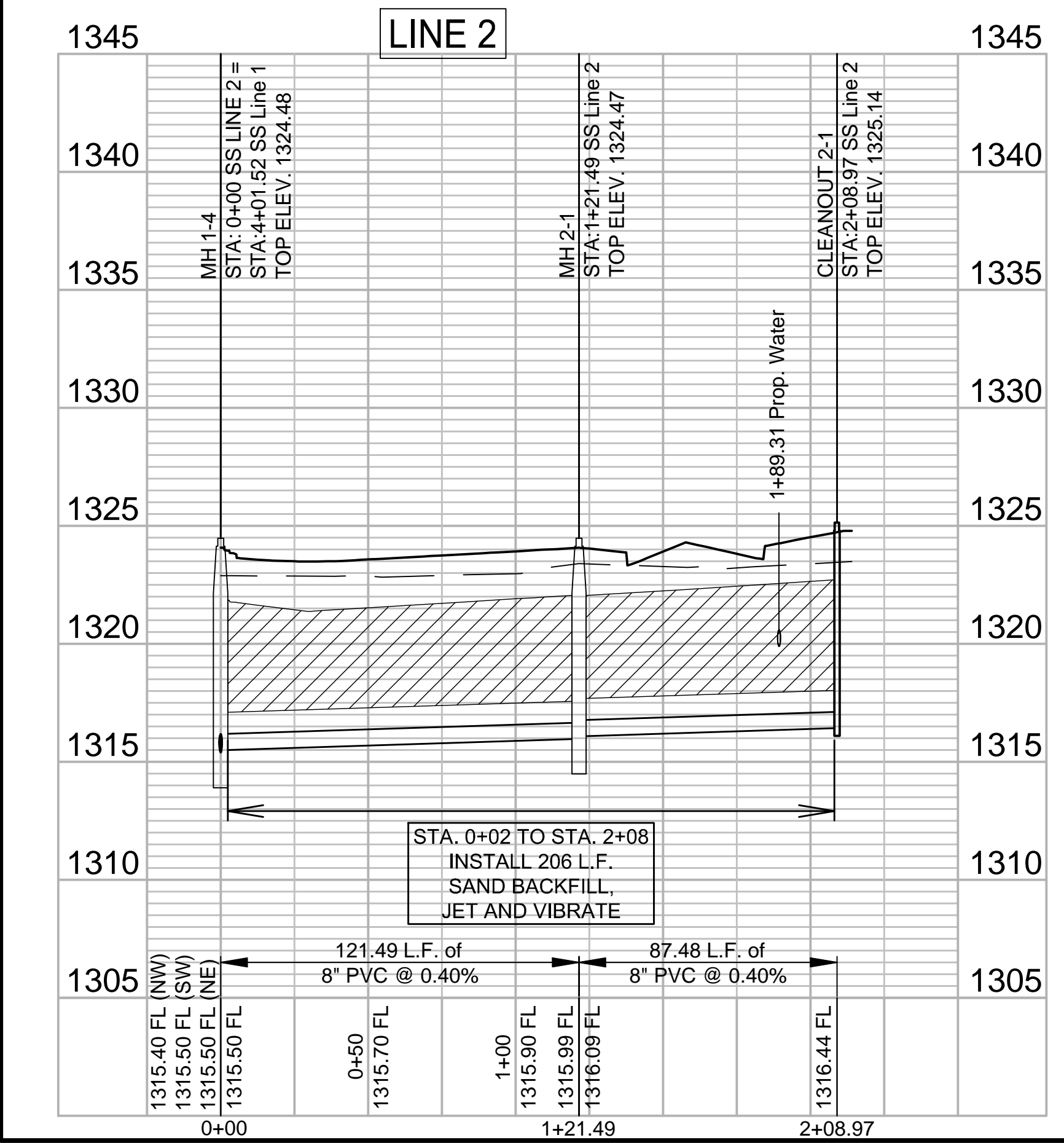
SS Lines 2, 1A, 1B, 1C  
 JOB NO.: 19T41004  
 DATE: AUG. 2019  
 DESIGNED BY: EJG  
 DRAWN BY: DRS  
 BAR IS ONE INCH ON ORIGINAL DRAWING  
 IF NOT ONE INCH ON THIS SHEET, ADJUST SCALES ACCORDINGLY.  
 DRAWING NUMBER  
 SHEET NUMBER **4** OF **17**



**CLEANOUT 2-1 (DOUBLE WYE)**  
 HORIZONTAL DIMENSIONS SHOWN FOR INFORMATION ONLY



**CLEANOUT 1A (DOUBLE WYE)**  
 HORIZONTAL DIMENSIONS SHOWN FOR INFORMATION ONLY



File: L:\2019\19T41004 - Emerald Bay 5th Add Ph 1\Drawings\CDD\SS\SS LINE 2.dwg Last Save: 8/6/2019 1:15 PM Last saved by: DRS/Standrich  
 Last plotted by: Standrich, Darryl R. Plot Style: --- Plot Scale: 1:2.5849 Plot Date: 8/8/2019 11:16 AM Plotter used: None

File: L:\2019\19T41004 - Emerald Bay 5th Add Ph 1\Drawings\CSD\19T41004-BURN LOCATION.dwg, Last Save: 8/6/2019 2:45 PM, Last saved by: DRStandrich  
 Last plotted by: Standrich, Daryl R., Plot Style: ---, Plot Scale: 1:2,5649, Plot Date: 8/8/2019 11:16 AM, Plotter used: None



PROJECT SITE

EMERALD BAY 3RD ADDITION

BURN LOCATION

EMERALD BAY 1ST ADDITION

EMERALD BAY 2ND ADDITION

SHORELINE

EMERALD BAY

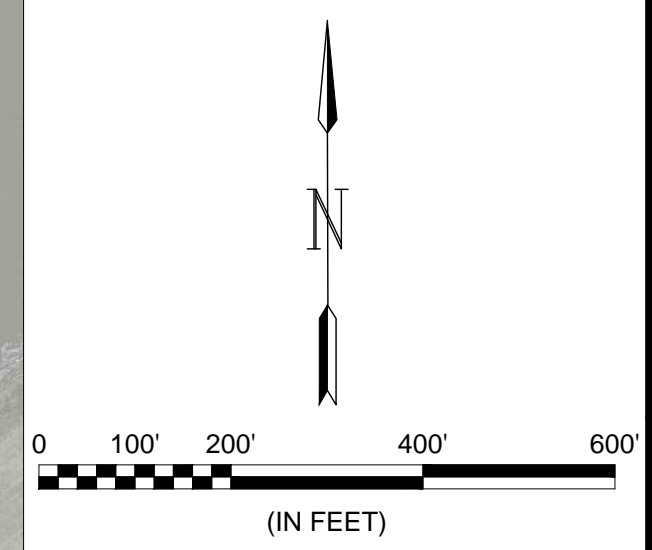
WEST STREET

BAYSIDE

WEST STREET


21st STREET N.

HOOVER



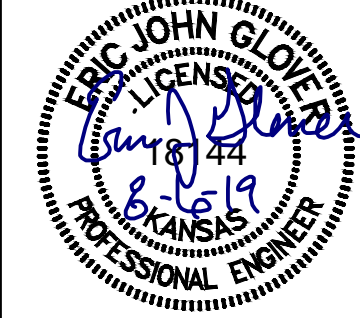
EMERALD BAY PROPERTIES

NOTE:  
 IT IS THE CONTRACTORS RESPONSIBILITY TO CONTACT FIRE DEPARTMENT FOR PERMITS PRIOR TO BURNING.




**GARVER**  
 © 2019 GARVER, LLC  
 THIS DOCUMENT, ALONG WITH THE IDEAS AND DESIGNS CONVEYED HEREIN, SHALL BE CONSIDERED INSTRUMENTS OF PROFESSIONAL SERVICE AND ARE PROPERTY OF GARVER, LLC. ANY USE, REPRODUCTION, OR DISTRIBUTION OF THIS DOCUMENT, ALONG WITH THE IDEAS AND DESIGN CONTAINED HEREIN, IS PROHIBITED UNLESS AUTHORIZED IN WRITING BY GARVER, LLC OR EXPLICITLY ALLOWED IN THE GOVERNING PROFESSIONAL SERVICES AGREEMENT FOR THIS WORK.

8535 E. 21st St. N.  
 Suite 130  
 Wichita, KS 67206  
 (316) 264-8008



REV.	DATE	DESCRIPTION	BY



CITY OF WICHITA  
 WICHITA, KANSAS

EMERALD BAY 5th ADD.  
 SANITARY SEWER

**BURN LOCATION**

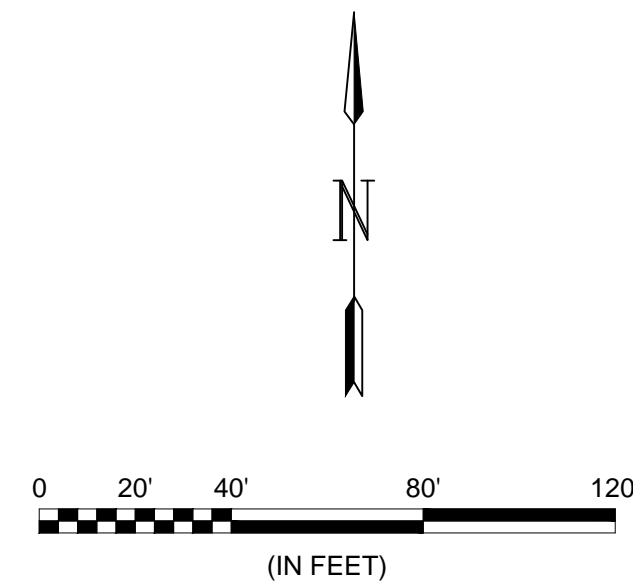
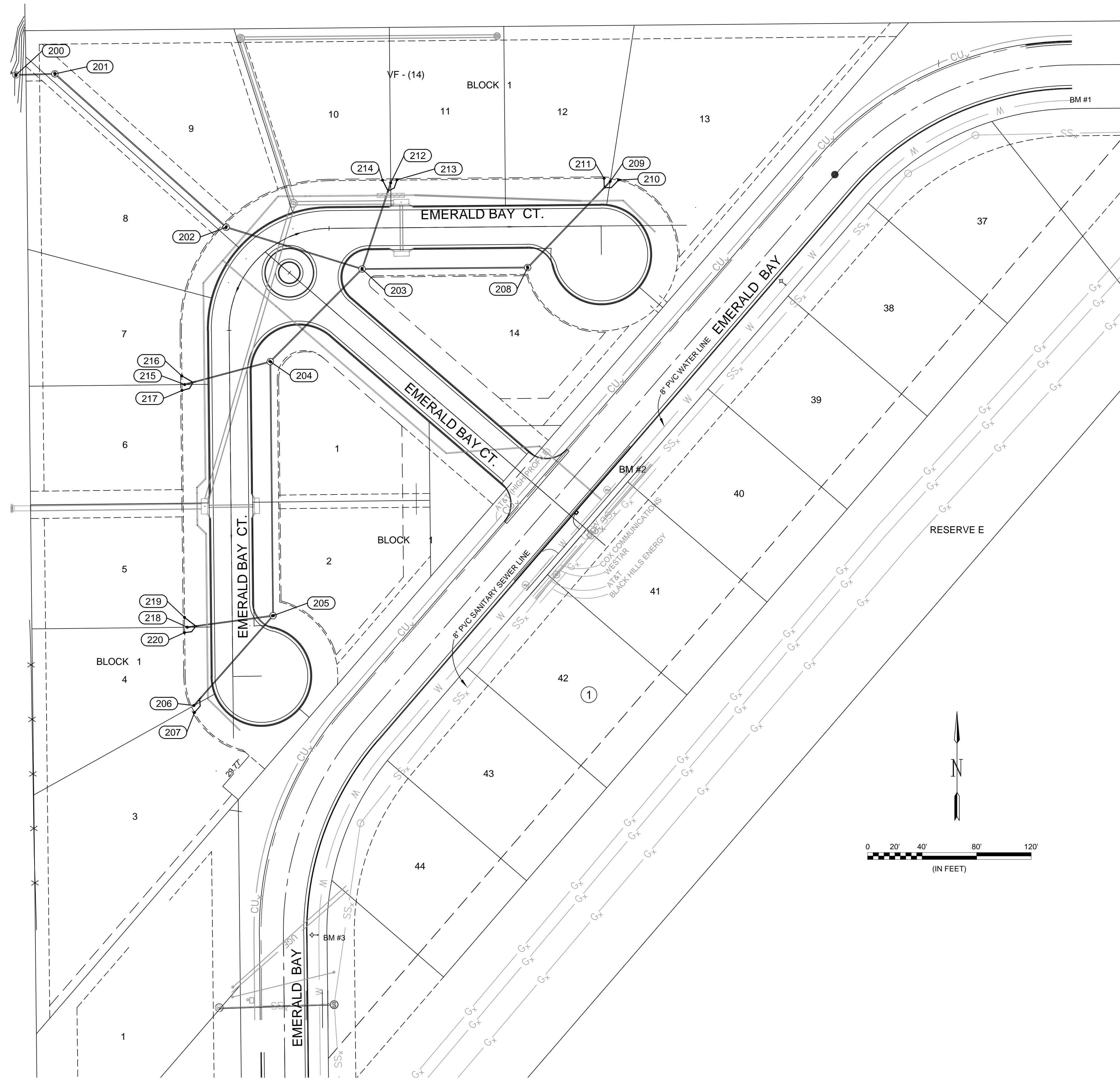
JOB NO.: 19T41004  
 DATE: AUG. 2019  
 DESIGNED BY: EJJ  
 DRAWN BY: DRS

BAR IS ONE INCH ON ORIGINAL DRAWING  
 IF NOT ONE INCH ON THIS SHEET, ADJUST SCALES ACCORDINGLY.

DRAWING NUMBER

SHEET NUMBER **5** OF **17**

File: L:\2019\19T41004 - Emerald Bay 5th Add Ph 1\Drawings\C3D\19T41004-ADDITION BUBBLE MAP.dwg Last Save: 8/6/2019 3:30 PM Last saved by: DRS\Standrich  
 Last plotted by: Standrich, Dairy R Plot Style: --- Plot Scale: 1:2,5849 Plot Date: 8/8/2019 11:17 AM Plotter used: None

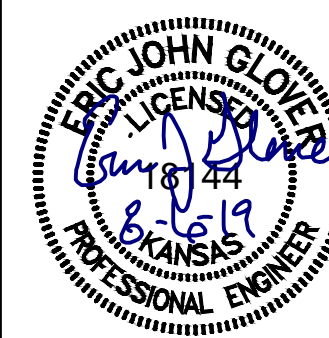


Point Table			
Point #	Northing	Easting	Description
200	1703093.49	1630937.08	MH 1-1 (EXISTING)
201	1703094.29	1630965.65	MH 1-2
202	1702981.81	1631091.28	MH 1-3
203	1702951.14	1631190.98	MH 1-4
204	1702883.22	1631123.67	MH 1-5
205	1702696.88	1631125.71	MH 1-6
206	1702630.96	1631067.69	CLEANOUT 1-1
207	1702625.86	1631068.08	CO 1-1 - 4" STUB LEFT
208	1702952.24	1631312.47	MH 2-1
209	1703015.34	1631373.05	CLEANOUT 2-1
210	1703016.47	1631379.20	CO 2-1 - 4" STUB RIGHT
211	1703017.70	1631368.52	CO 2-1 - 4" STUB LEFT
212	1703014.33	1631212.01	CLEANOUT 1A-1
213	1703016.57	1631216.62	CO 1A-1 - 4" STUB RIGHT
214	1703016.31	1631206.02	CO 1A-1 - 4" STUB LEFT
215	1702866.38	1631060.85	CLEANOUT 1B-1
216	1702872.73	1631058.81	CO 1B-1 - 4" STUB RIGHT
217	1702862.05	1631058.83	CO 1B-1 - 4" STUB LEFT
218	1702688.39	1631062.79	CLEANOUT 1C-1
219	1702695.56	1631060.78	CO 1C-1 - 4" STUB RIGHT
220	1702684.42	1631060.73	CO 1C-1 - 4" STUB LEFT



© 2019 GARVER, LLC  
 THIS DOCUMENT, ALONG WITH THE IDEAS AND DESIGNS CONVEYED HEREIN, SHALL BE CONSIDERED INSTRUMENTS OF PROFESSIONAL SERVICE AND ARE PROPERTY OF GARVER, LLC. ANY USE, REPRODUCTION, OR DISTRIBUTION OF THIS DOCUMENT, ALONG WITH THE IDEAS AND DESIGN CONTAINED HEREIN, IS PROHIBITED UNLESS AUTHORIZED IN WRITING BY GARVER, LLC OR EXPLICITLY ALLOWED IN THE GOVERNING PROFESSIONAL SERVICES AGREEMENT FOR THIS WORK.

8535 E. 21st St. N.  
 Suite 130  
 Wichita, KS 67206  
 (316) 264-8008



REV.	DATE	DESCRIPTION	BY



CITY OF WICHITA  
 WICHITA, KANSAS  
 EMERALD BAY 5th ADD.  
 WATER

SS BUBBLE MAP

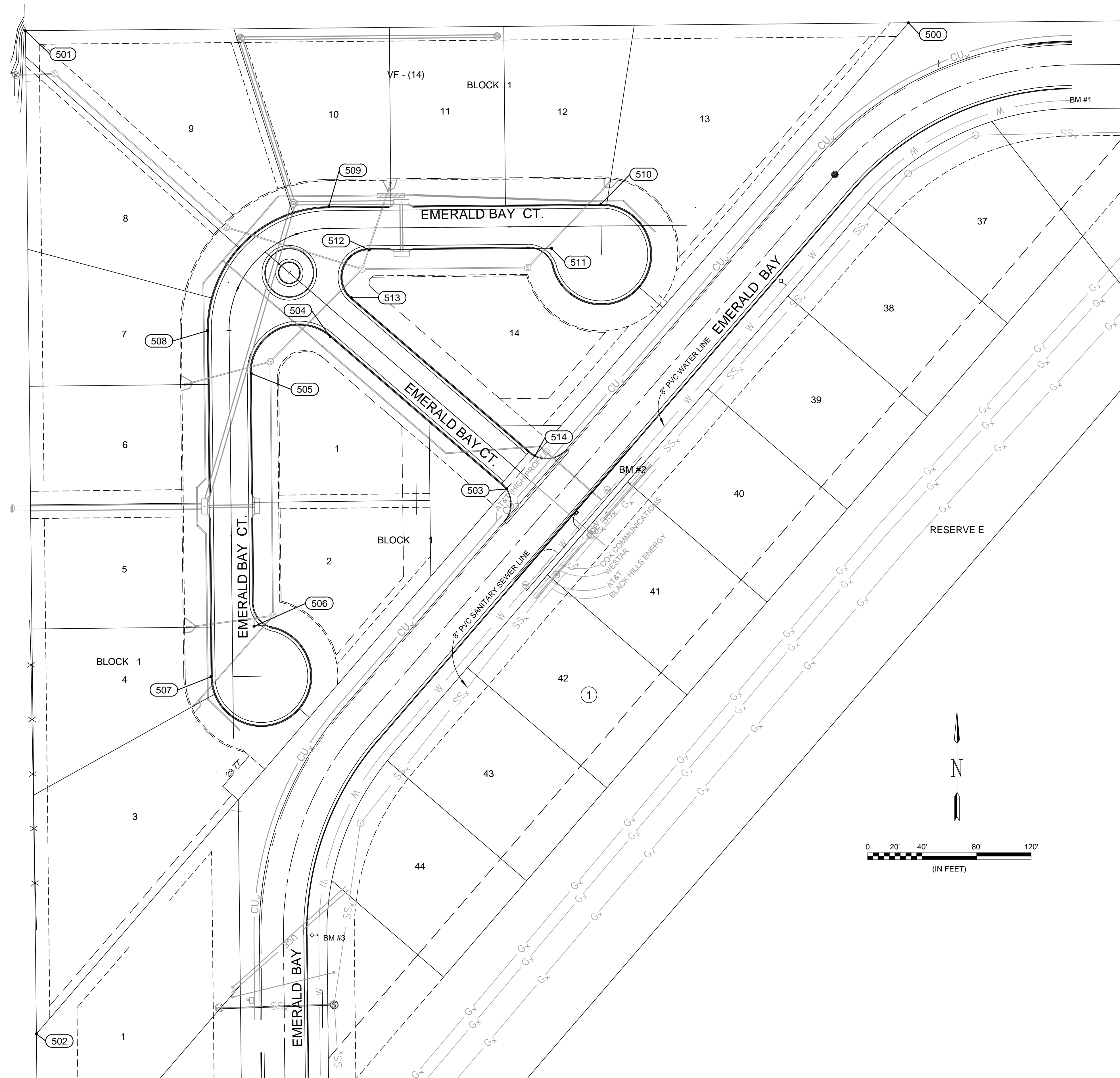
JOB NO.: 19T41004  
 DATE: AUG. 2019  
 DESIGNED BY: EJJ  
 DRAWN BY: DRS

BAR IS ONE INCH ON ORIGINAL DRAWING  
 IF NOT ONE INCH ON THIS SHEET, ADJUST SCALES ACCORDINGLY.

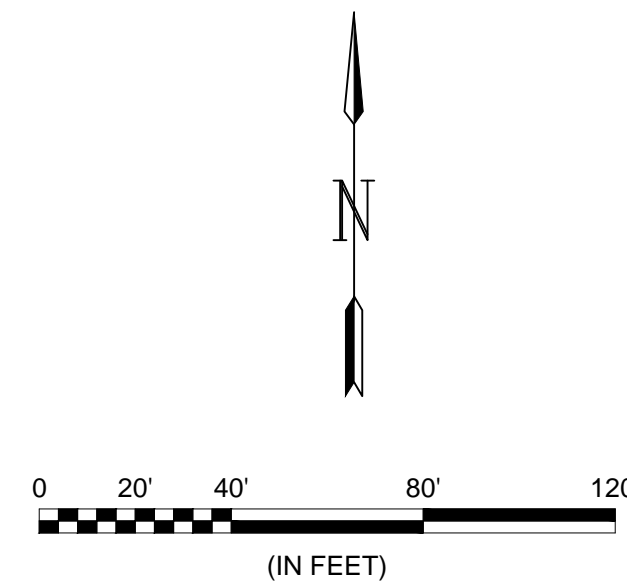
DRAWING NUMBER

SHEET NUMBER **9** OF **17**

File: L:\2019\19T41004 - Emerald Bay 5th Add Ph 1\Drawings\CADD\19T41004-ADDITION BUBBLE MAP.dwg Last Save: 8/6/2019 3:39 PM Last saved by: DRS\Standrich  
 Last plotted by: Standrich, Dairy R. Plot Style: --- Plot Scale: 1:2,5849 Plot Date: 8/8/2019 11:17 AM Plotter used: None

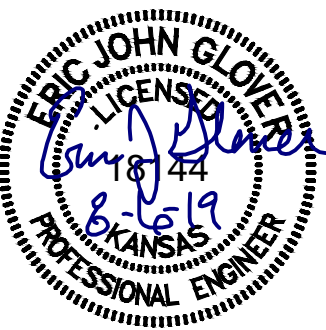


Point Table			
Point #	Northing	Easting	Description
500	1703131.76	1631591.84	ADDITION CORNER
501	1703125.92	1630944.01	ADDITION CORNER
502	1702390.25	1630952.04	ADDITION CORNER
503	1702789.88	1631296.85	BLOCK CORNER
504	1702901.38	1631167.63	PC
505	1702874.50	1631109.77	PT
506	1702689.16	1631111.79	BLOCK CORNER
507	1702652.15	1631080.19	PT
508	1702905.94	1631077.42	PC
509	1702996.92	1631166.60	PT
510	1702998.72	1631366.27	PC
511	1702966.39	1631329.90	BLOCK CORNER
512	1702965.19	1631196.28	PC
513	1702930.05	1631183.39	PT
514	1702814.11	1631317.76	BLOCK CORNER



© 2019 GARVER, LLC  
 THIS DOCUMENT, ALONG WITH THE IDEAS AND DESIGNS CONVEYED HEREIN, SHALL BE CONSIDERED INSTRUMENTS OF PROFESSIONAL SERVICE AND ARE PROPERTY OF GARVER, LLC. ANY USE, REPRODUCTION, OR DISTRIBUTION OF THIS DOCUMENT, ALONG WITH THE IDEAS AND DESIGN CONTAINED HEREIN, IS PROHIBITED UNLESS AUTHORIZED IN WRITING BY GARVER, LLC OR EXPLICITLY ALLOWED IN THE GOVERNING PROFESSIONAL SERVICES AGREEMENT FOR THIS WORK.

8535 E. 21st St. N.  
 Suite 130  
 Wichita, KS 67206  
 (316) 264-8008



REV.	DATE	DESCRIPTION	BY



CITY OF WICHITA  
 WICHITA, KANSAS  
 EMERALD BAY 5th ADD.  
 WATER

**ADDITION BUBBLE MAP**

JOB NO.: 19T41004  
 DATE: AUG. 2019  
 DESIGNED BY: EJJ  
 DRAWN BY: DRS

BAR IS ONE INCH ON ORIGINAL DRAWING  
 IF NOT ONE INCH ON THIS SHEET, ADJUST SCALES ACCORDINGLY.

DRAWING NUMBER