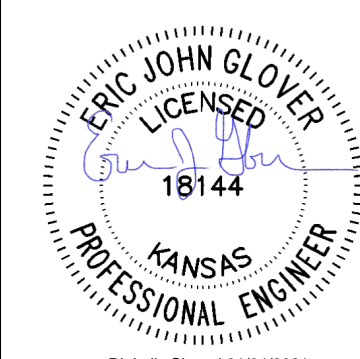
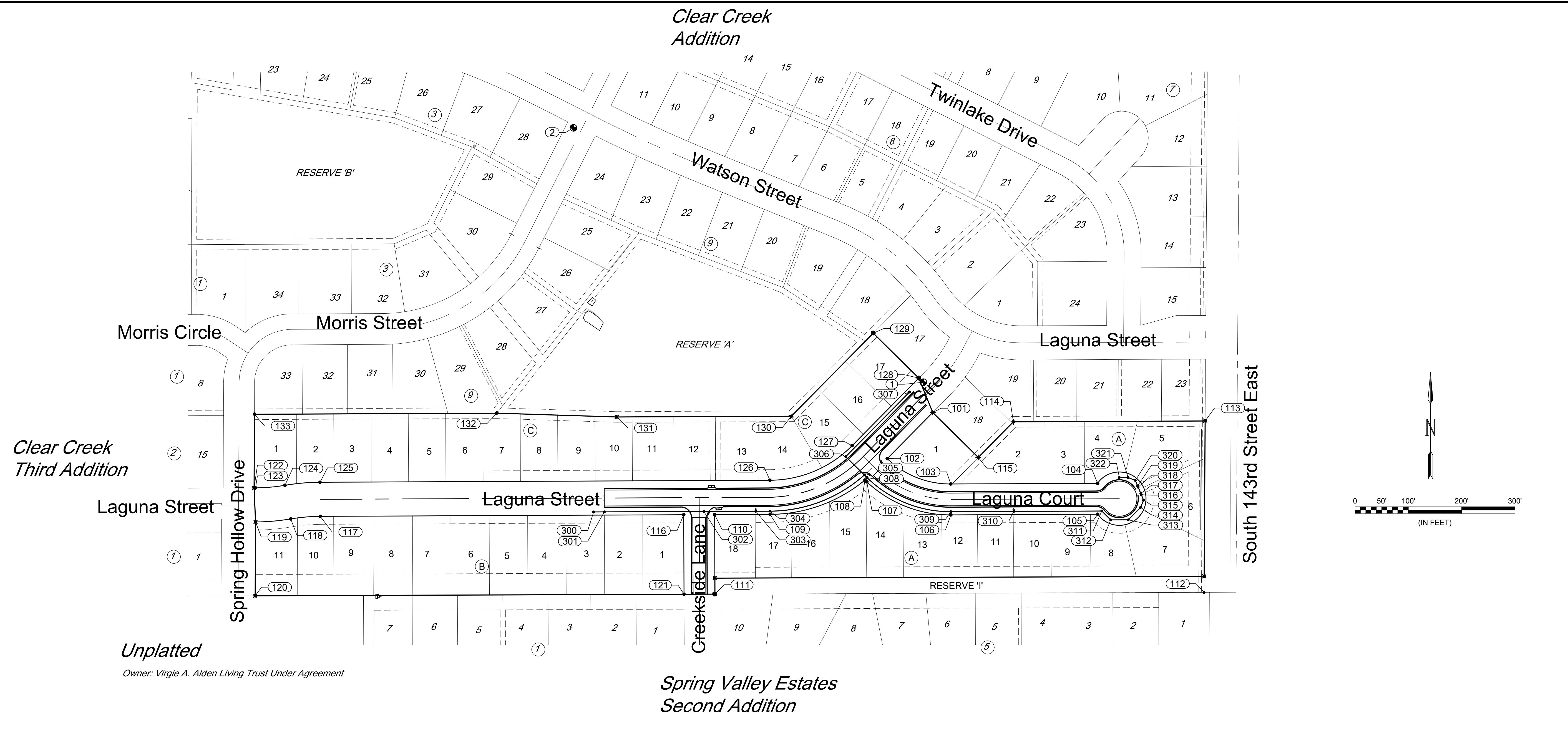




© 2020 GARVER, LLC
 THIS DOCUMENT, ALONG WITH THE IDEAS AND DESIGNS CONVEYED HEREIN, SHALL BE CONSIDERED INSTRUMENTS OF PROFESSIONAL SERVICE AND ARE PROPERTY OF GARVER, LLC. ANY USE, REPRODUCTION, OR DISTRIBUTION OF THIS DOCUMENT, ALONG WITH THE IDEAS AND DESIGN CONTAINED HEREIN, IS PROHIBITED UNLESS AUTHORIZED IN WRITING BY GARVER, LLC OR EXPLICITLY ALLOWED IN THE GOVERNING PROFESSIONAL SERVICES AGREEMENT FOR THIS WORK.



Digitally Signed 01/04/2021



Unplatted
 Owner: Virgie A. Alden Living Trust Under Agreement

**Spring Valley Estates
 Second Addition**

Point #	Elevation	Northing	Easting	Description
1	0.00	20394.06	19413.25	BENCHMARK #1
2	0.00	20871.45	18756.78	BENCHMARK #2
101	0.00	20337.25	19430.90	BLK CNR
102	0.00	20250.74	19345.56	BLK CNR
103	0.00	20203.13	19464.71	PT
104	0.00	20204.35	19740.25	BLK CNR
105	0.00	20146.35	19740.51	BLK CNR
106	0.00	20145.13	19464.96	PC
107	0.00	20207.10	19307.29	PT
108	0.00	20210.49	19303.75	BLK CNR
109	0.00	20146.13	19125.67	PT
110	0.00	20145.67	19021.69	BLK CNR
111	0.00	19996.43	19022.24	BLK CNR
112	0.00	19999.78	19940.00	BLK CNR
113	0.00	20321.35	19942.02	BLK CNR

Point #	Elevation	Northing	Easting	Description
114	0.00	20319.75	19582.20	BLK CNR
115	0.00	20252.98	19516.33	BLK CNR
116	0.00	20145.41	18963.69	BLK CNR
117	0.00	20142.39	18281.53	PC
118	0.00	20137.57	18226.28	PRC
119	0.00	20131.85	18160.24	BLK CNR
120	0.00	19993.28	18159.60	BLK CNR
121	0.00	19996.22	18964.24	BLK CNR
122	0.00	20195.84	18157.53	BLK CNR
123	0.00	20195.85	18160.24	PC
124	0.00	20200.66	18215.49	PRC
125	0.00	20206.38	18281.24	PT
126	0.00	20210.13	19125.39	PC
127	0.00	20275.03	19279.62	PT
128	0.00	20401.85	19404.73	BLK CNR

Point #	Elevation	Northing	Easting	Description
129	0.00	20486.13	19319.30	BLK CNR
130	0.00	20330.31	19165.59	BLK CNR
131	0.00	20328.85	18838.01	BLK CNR
132	0.00	20335.97	18612.98	BLK CNR
133	0.00	20333.96	18158.16	BLK CNR
300	0.00	20150.66	18794.68	WL 1 0+00 BLOWOFF
301	0.00	20150.75	18814.68	WL 1 0+20 SPECIAL ANCHOR GATE VALVE
302	0.00	20151.58	19001.27	WL 1 2+07 PVI
303	0.00	20152.01	19098.94	WL 1 3+04 HYDRANT
304	0.00	20152.13	19125.65	WL 1 3+31 PC CURVE #1
305	0.00	20220.00	19302.65	WL 1 5+25 TEE
306	0.00	20254.44	19267.74	WL 1 5+76 90° BEND
307	0.00	20375.68	19387.33	WL 1 7+47 CONNECT TO EXIST
308	0.00	20215.37	19307.34	WL 2 0+07 PC CURVE #2
309	0.00	20151.13	19464.94	WL 2 1+81 PT CURVE #2

Point #	Elevation	Northing	Easting	Description
310	0.00	20151.65	19582.95	WL 2 2+99 HYDRANT
311	0.00	20152.39	19748.05	WL 2 4+64 45° BEND
312	0.00	20135.73	19764.85	WL 2 4+88 45° BEND
313	0.00	20135.88	19797.76	WL 2 5+21 45° BEND
314	0.00	20159.25	19820.93	WL 2 5+54 22.5° BEND
315	0.00	20172.87	19826.50	WL 2 5+69 45° BEND
316	0.00	20183.02	19822.25	WL 2 5+80 45° BEND (VERT)
317	0.00	20185.47	19821.22	WL 2 5+82 45° BEND (VERT)
318	0.00	20197.12	19816.33	WL 2 5+95 45° BEND (VERT)
319	0.00	20199.62	19815.28	WL 2 5+98 45° BEND (VERT)
320	0.00	20209.76	19811.03	WL 2 6+09 22.5° BEND
321	0.00	20215.33	19797.41	WL 2 6+23 45° BEND
322	0.00	20215.26	19780.95	WL 2 6+40 BLOWOFF

REV.	DATE	DESCRIPTION	BY



CITY OF WICHITA
 WICHITA, KANSAS
 CLEAR CREEK ADDITION
 WATER LINE

**COORDINATE
 MAP**

JOB NO.: 20T41005
 DATE: OCT 2020
 DESIGNED BY: EJG
 DRAWN BY: CDJ

BAR IS ONE INCH ON ORIGINAL DRAWING
 IF NOT ONE INCH ON THIS SHEET, ADJUST SCALES ACCORDINGLY.

DRAWING NUMBER

File: L:\2020\20T41005 - Clear Creek Ph. 6 Drawings\C3D\WATER\COORDINATE MAP.dwg Last Save: 12/14/2020 11:01 AM Last saved by: CDJurey
 Last plotted by: Jurey, Caleb D. Plot Date: 1/4/2021 10:01 AM Plotter used: None