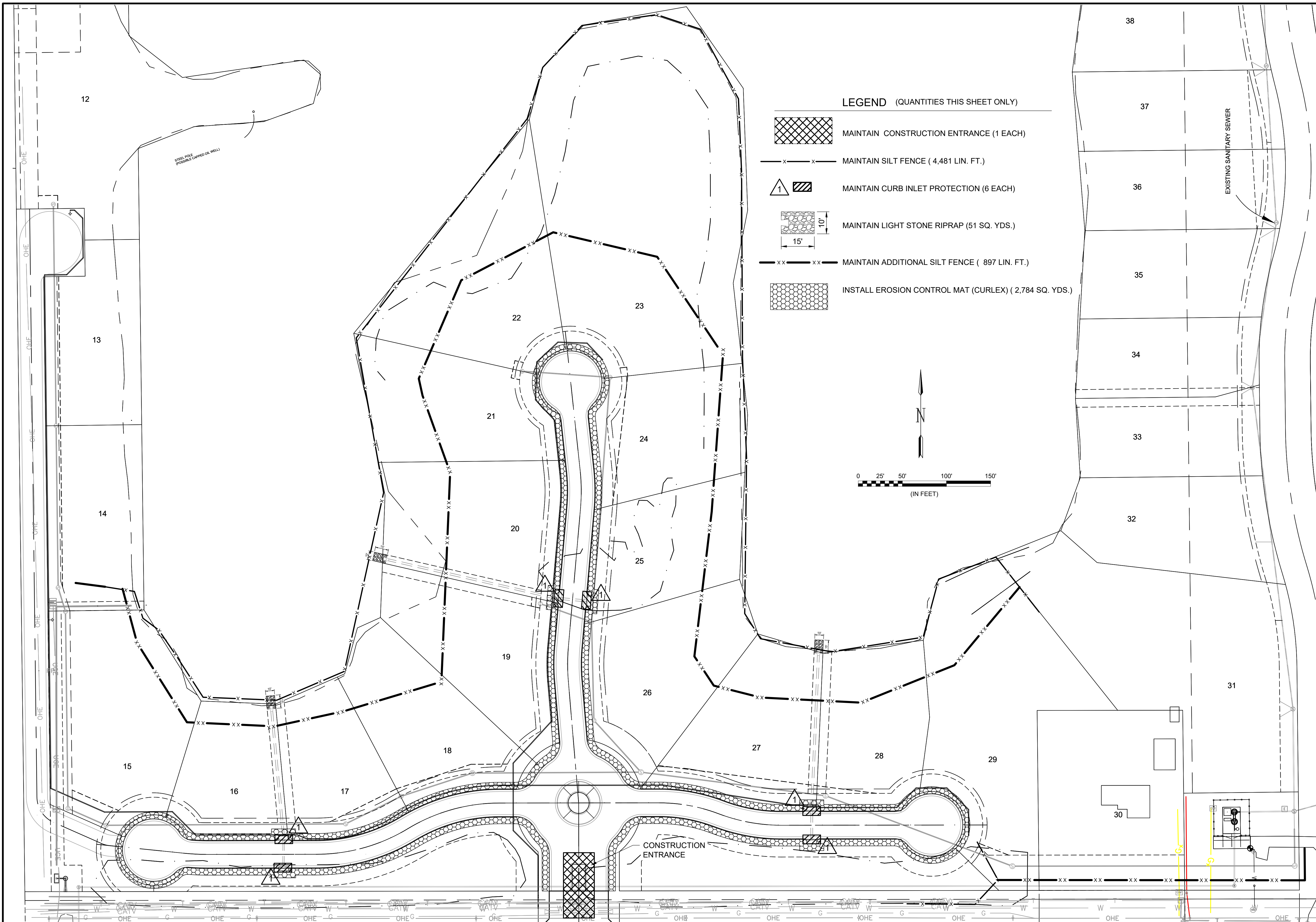
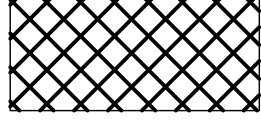


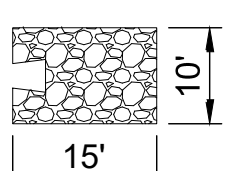

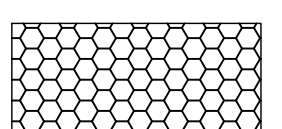
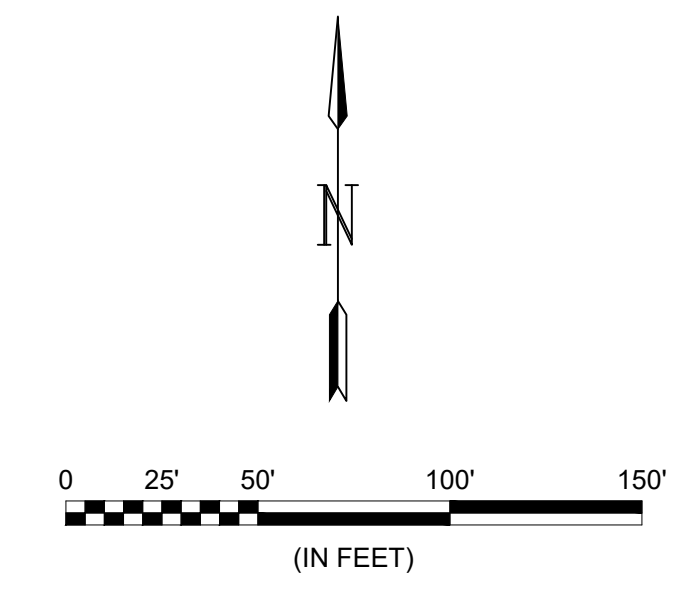


File: L:\2019\19141016 - Emerald Bay 4th PH 2\Drawings\C3D\Storm Sewer\EROSION CONTROL PLAN SOUTH.SS.dwg Last Save: 12/1/2020 8:03 AM Last saved by: DRStandrich  
 Last plotted by: Glover, Eric J. Plot Style: --- Plot Scale: 1:2,5649 Plot Date: 12/1/2020 12:09 PM Plotter used: None



**LEGEND (QUANTITIES THIS SHEET ONLY)**

-  MAINTAIN CONSTRUCTION ENTRANCE (1 EACH)
-  MAINTAIN SILT FENCE ( 4,481 LIN. FT.)
-  MAINTAIN CURB INLET PROTECTION (6 EACH)
-  MAINTAIN LIGHT STONE RIPRAP (51 SQ. YDS.)
-  MAINTAIN ADDITIONAL SILT FENCE ( 897 LIN. FT.)
-  INSTALL EROSION CONTROL MAT (CURLEX) ( 2,784 SQ. YDS.)



© 2020 GARVER, LLC  
 THIS DOCUMENT, ALONG WITH THE IDEAS AND DESIGNS CONVEYED HEREIN, SHALL BE CONSIDERED INSTRUMENTS OF PROFESSIONAL SERVICE AND ARE PROPERTY OF GARVER, LLC. ANY USE, REPRODUCTION, OR DISTRIBUTION OF THIS DOCUMENT, ALONG WITH THE IDEAS AND DESIGN CONTAINED HEREIN, IS PROHIBITED UNLESS AUTHORIZED IN WRITING BY GARVER, LLC OR EXPLICITLY ALLOWED IN THE GOVERNING PROFESSIONAL SERVICES AGREEMENT FOR THIS WORK.

8535 E. 21st St. N.  
 Suite 130  
 Wichita, KS 67206  
 (316) 264-8008

REV.	DATE	DESCRIPTION	BY



CITY OF WICHITA  
 WICHITA, KANSAS  
 EMERALD BAY 4th ADD.  
 PHASE 2 - PAVING

**EROSION CONTROL PLAN**

JOB NO.: 19T41016  
 DATE: SEPT. 2020  
 DESIGNED BY: .  
 DRAWN BY: .

BAR IS ONE INCH ON ORIGINAL DRAWING  
 0 1" IF NOT ONE INCH ON THIS SHEET, ADJUST SCALES ACCORDINGLY.

DRAWING NUMBER