



© 2020 GARVER, LLC  
 THIS DOCUMENT, ALONG WITH THE IDEAS AND DESIGNS CONVEYED HEREIN, SHALL BE CONSIDERED INSTRUMENTS OF PROFESSIONAL SERVICE AND ARE PROPERTY OF GARVER, LLC. ANY USE, REPRODUCTION, OR DISTRIBUTION OF THIS DOCUMENT, ALONG WITH THE IDEAS AND DESIGN CONTAINED HEREIN, IS PROHIBITED UNLESS AUTHORIZED IN WRITING BY GARVER, LLC OR EXPLICITLY ALLOWED IN THE GOVERNING PROFESSIONAL SERVICES AGREEMENT FOR THIS WORK.

8535 E. 21st St. N.  
 Suite 130  
 Wichita, KS 67206  
 (316) 264-8008

REV.	DATE	DESCRIPTION	BY



CITY OF WICHITA  
 WICHITA, KANSAS  
 EMERALD BAY 4th ADD.  
 PHASE 2 - PAVING

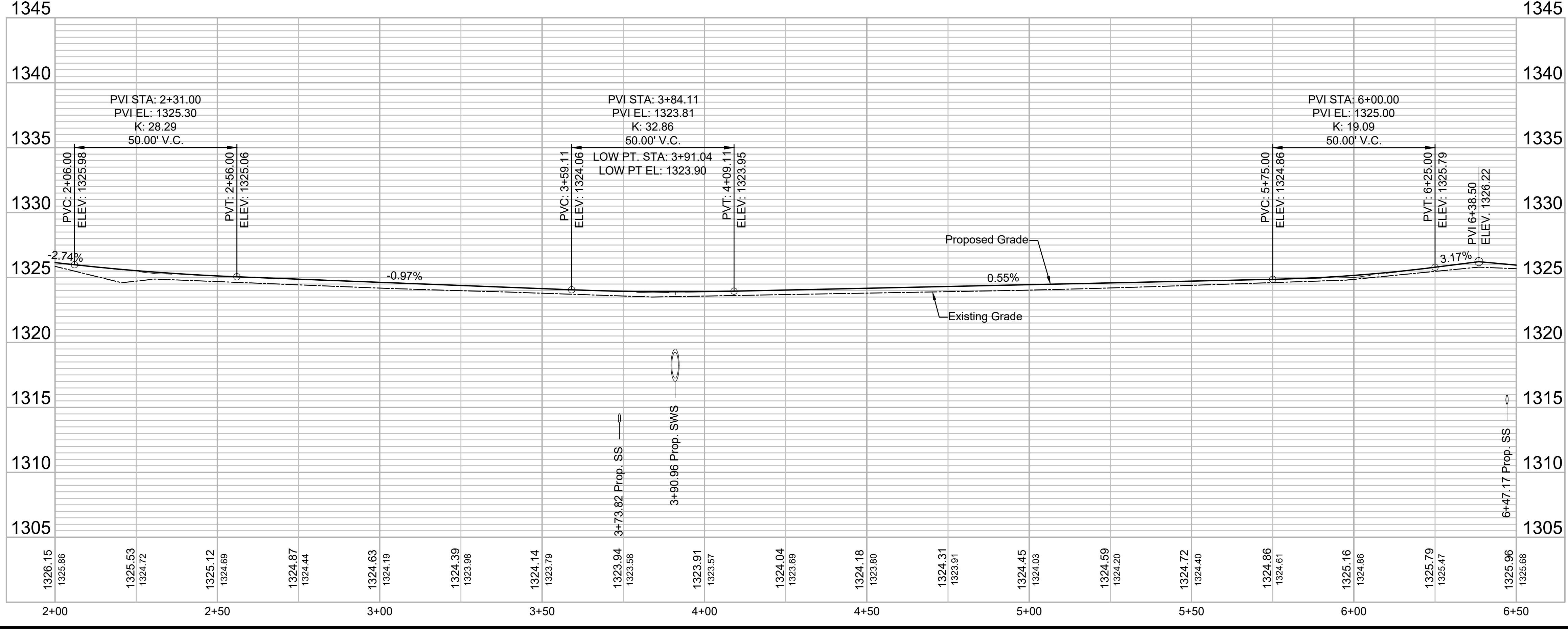
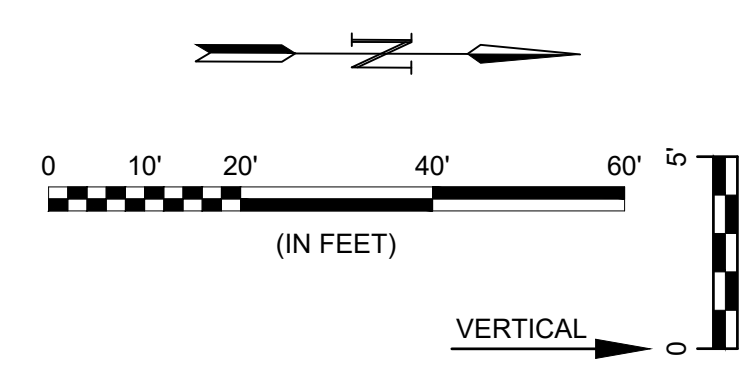
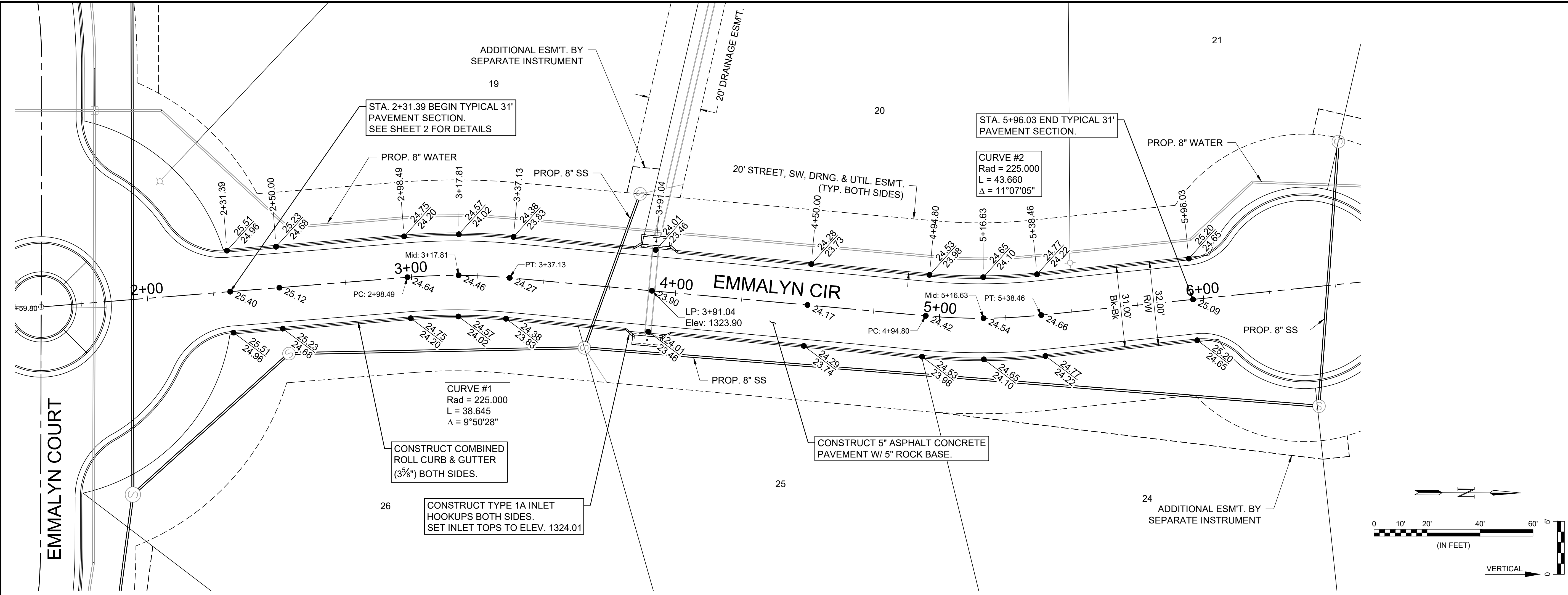
EMMALYN CIR

JOB NO.: 19T41016  
 DATE: SEPT. 2020  
 DESIGNED BY: .  
 DRAWN BY: .

BAR IS ONE INCH ON ORIGINAL DRAWING  
 IF NOT ONE INCH ON THIS SHEET, ADJUST SCALES ACCORDINGLY.

DRAWING NUMBER

SHEET NUMBER **9** OF **21**



File: L:\2019\19T41016 - Emerald Bay 4th PH 2\Drawings\C3D\Paving Sheets\EMMALYN CIR.dwg Last Save: 12/1/2020 7:55 AM Last saved by: E.Glover  
 Last plotted by: Glover, Eric J. Plot Style: --- Plot Scale: 1:2.565 Plot Date: 12/1/2020 11:28 AM Plotter used: None

EMMALYN COURT