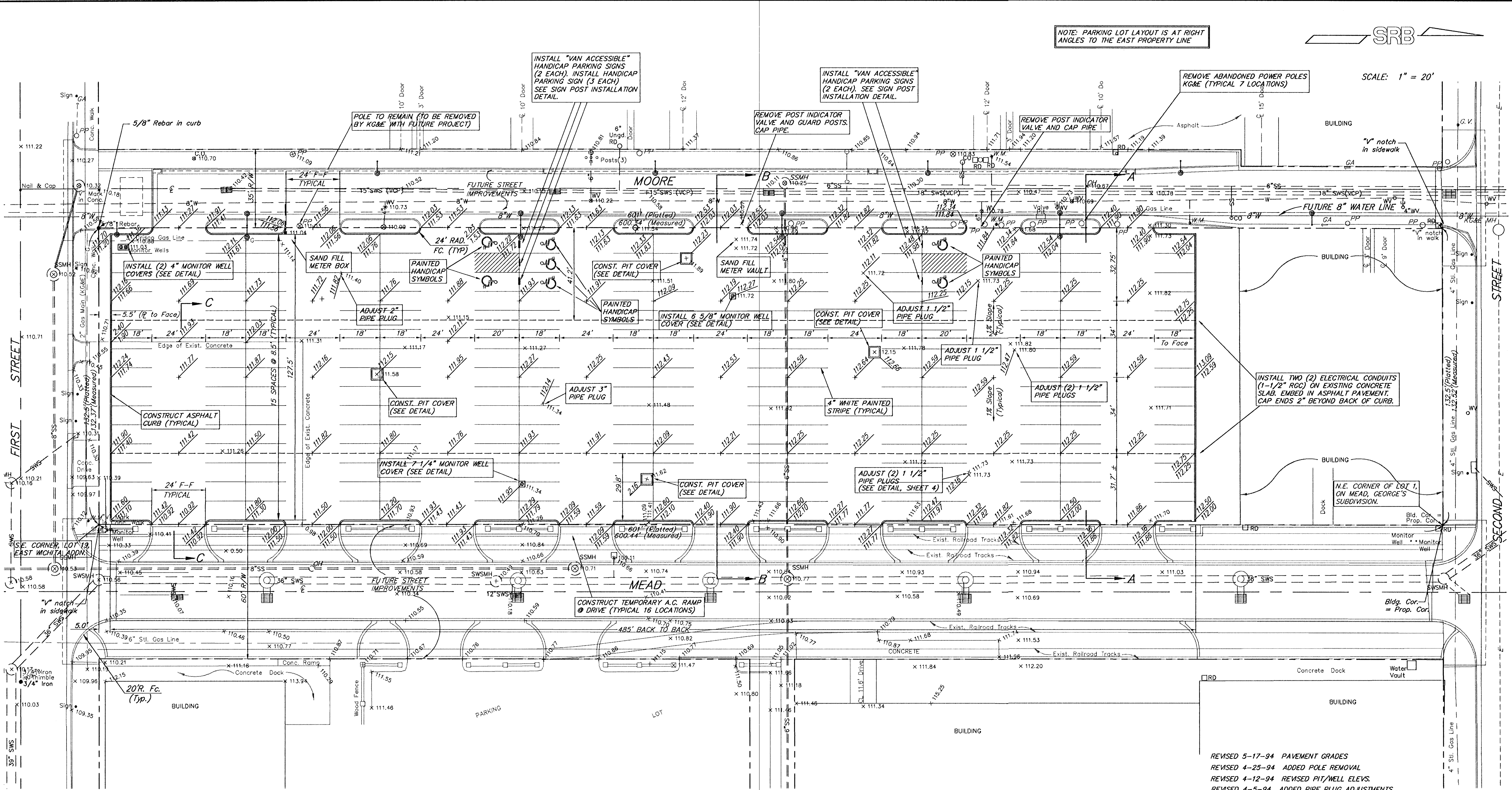


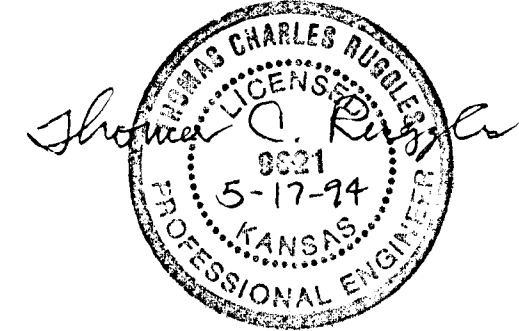
NOTE: PARKING LOT LAYOUT IS AT RIGHT ANGLES TO THE EAST PROPERTY LINE



BENCH MARK: R.R. SPIKE IN THE EAST FACE OF POWER POLE LOCATED AT THE N.E. CORNER OF THE INTERSECTION OF FIRST AND MOORE, ELEVATION = 112.41 CITY DATUM

BENCH MARK: R.R. SPIKE IN THE SOUTH FACE OF POWER POLE AT THE N.W. CORNER OF MEAD AND SECOND STREET, ELEVATION = 113.31 CITY DATUM

LEGAL DESCRIPTION:
 The east 132.5 feet of odd numbered Lots 1 through 21 inclusive, George's Subdivision, and the N 1/2 of vacated alley adjacent thereto; and Lot 19, the east 20.5 feet of Lot 21 on First Street, the east 132.5 feet of Lots 23 and 25 on Mead, East Wichita Addition, and the S 1/2 of vacated alley adjacent thereto.



- REVISED 5-17-94 PAVEMENT GRADES
- REVISED 4-25-94 ADDED POLE REMOVAL
- REVISED 4-12-94 REVISED PIT/WELL ELVES.
- REVISED 4-5-94 ADDED PIPE PLUG ADJUSTMENTS
- REVISED GRADES & ADD H.C. PARKING

OLD TOWN IMPROVEMENTS "COLEMAN B" PARKING LOT	
SRB	841 SOUTH HILLSIDE WICHITA, KANSAS 67211
318-652-7754 FAX 652-7932	PROJECT NUMBER 790865
SAVOY, RUGGLES & BOHM, P.A. ENGINEERING & SURVEYING	
DRAWN T. Brooks	INDEX CODE 113E
DESIGN T. Ruggles	DATE 2/15/94
REVIEW	UTILITY SRB JOB 113E