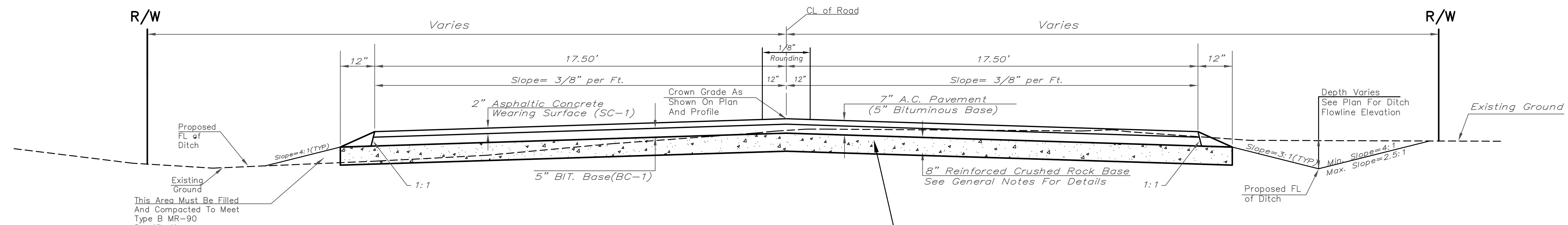


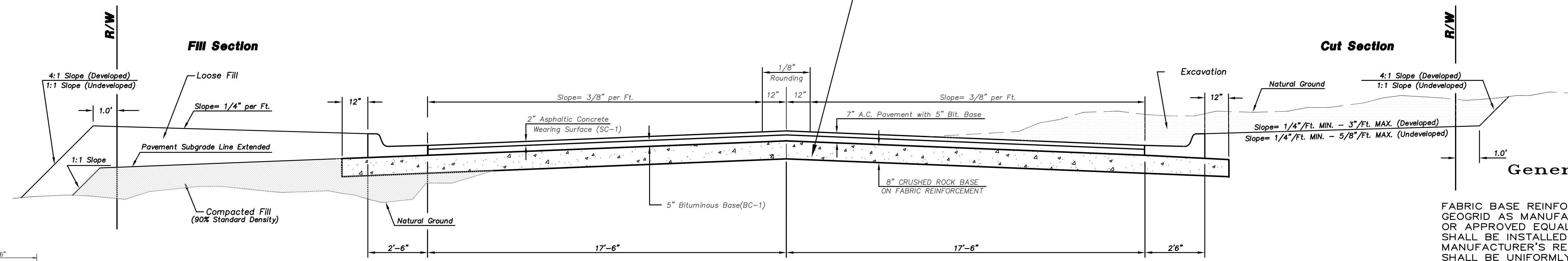
TYPICAL 35' PAVEMENT DETAILS

(INDUSTRIAL STANDARD PAVEMENT SECTIONS)



INDUSTRIAL STANDARD PAVEMENT SECTION,
NO CURB & GUTTER. STA. 9+59.97 TO 23+31.13

WHEN CUT OR FILL OPERATIONS ARE COMPLETE, THE SUBGRADE SHALL BE GRADED TO APPROXIMATELY THE BOTTOM OF THE PROPOSED CRUSHED ROCK BASE. PRIOR TO INSTALLATION OF THE GEOGRID AND CRUSHED ROCK BASE THE ENTIRE SUBGRADE SHALL BE PROOFROLLED WITH A LOADED WATER TRUCK APPROVED BY THE PROJECT INSPECTOR OR ENGINEER IN THE PRESENCE OF THE PROJECT INSPECTOR FOR APPROVAL OF SUBGRADE STABILITY. ALL UNSTABLE AREAS SHALL BE REMOVED AND REPLACED WITH SUITABLE MATERIAL, AND ALL OTHER AREAS THAT GIVE OR PUMP UNDER THE WEIGHT OF THE LOADED WATER TRUCK SHALL BE SCARIFIED AND RECOMPACTED TO DEMONSTRATE STABILITY AND COMPACTION MEETING THE REQUIREMENTS OF KANSAS DEPARTMENT OF TRANSPORTATION TYPE B, MR-90 SPECIFICATIONS. IF NECESSARY, IN THE ENGINEER'S OPINION, THE UNSUITABLE MATERIAL SHALL BE REMOVED AND REPLACED WITH SELECT MATERIAL AS DIRECTED BY THE ENGINEER OR PROJECT INSPECTOR. ALL EARTHWORK MUST BE COMPLETED TO APPROXIMATELY THE PROPER DISTANCE BELOW THE FINISH GRADE OF THE PAVEMENT AND TO THE MINIMUM WIDTHS SPECIFIED BY THE TYPICAL SECTION AND THE CONTRACTOR SHALL OBTAIN APPROVAL FROM THE ENGINEER PRIOR TO PROCEEDING WITH THE NEXT PHASE OF CONSTRUCTION OF THE REINFORCED CRUSHED ROCK BASE. ALL WORK REQUIRED TO PROOFROLL AND STABILIZE THE SUBGRADE PRIOR TO APPLICATION OF THE GEOGRID AND CRUSHED ROCK BASE SHALL BE AT THE CONTRACTOR'S EXPENSE.



INDUSTRIAL STANDARD PAVEMENT SECTION,
W/CURB & GUTTER. STA. 23+31.13 TO 23+77.15

General Notes

FABRIC BASE REINFORCEMENT SHALL BE B X 1100 GEOGRID AS MANUFACTURED BY TENSAR CORPORATION OR APPROVED EQUAL. FABRIC BASE REINFORCEMENT SHALL BE INSTALLED IN ACCORDANCE WITH MANUFACTURER'S RECOMMENDATIONS. CRUSHED ROCK SHALL BE UNIFORMLY GRADED FROM 1-1/2" MAXIMUM SIZE TO NOT MORE THAN 10% PASSING A NO. 200 SIEVE. ROCK QUALITY SHALL BE THE SAME AS SPECIFIED FOR COARSE AGGREGATE FOR CONCRETE MIXES.

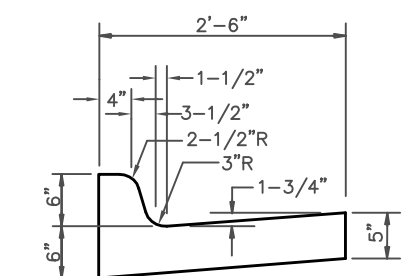
ROCK BASE IS TO BE COMPACTED AND SMOOTHED WITH A STEEL FACED ROLLER PRIOR TO PLACEMENT OF ASPHALT. TACK COAT WILL NOT BE APPLIED TO ROCK BASE.

A TACK COAT OF EMULSIFIED ASPHALT (SC-1H OR CSS-1H) SHALL BE APPLIED AT AN APPROXIMATE RATE OF 0.05 GALLONS PER SQUARE YARD BETWEEN EACH LIFT OF ASPHALTIC MATERIAL.

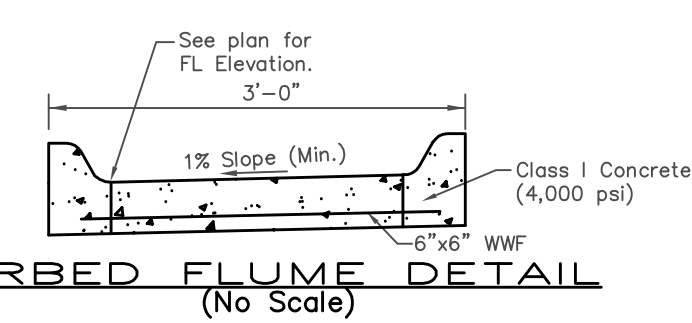
BITUMINOUS BASE AND ASPHALTIC CONCRETE WEARING SURFACE SHALL BE PLACED WITH A LAYDOWN MACHINE HAVING AUTOMATIC CONTROLS FOR LINE AND GRADE.

CONSTRUCTION JOINTS IN EACH LIFT SHALL BE STAGGERED A MINIMUM DISTANCE OF ONE (1) FOOT FROM JOINTS IN PRECEDING LIFTS AND PLACED SO THAT A JOINT WILL BE CONSTRUCTED ON THE CENTERLINE OF THE TOP LIFT.

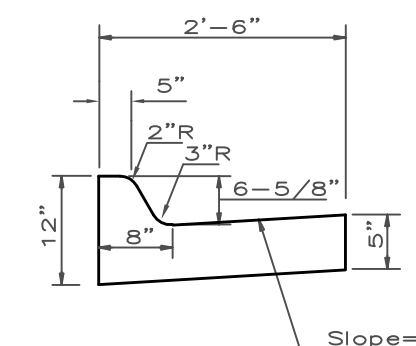
THE ASPHALTIC CONCRETE PAVEMENT BETWEEN THE COMBINED CURB AND GUTTER SHALL BE PAID AS SQUARE YARDS OF 7" ASPHALTIC CONCRETE (5" BITUMINOUS BASE.)



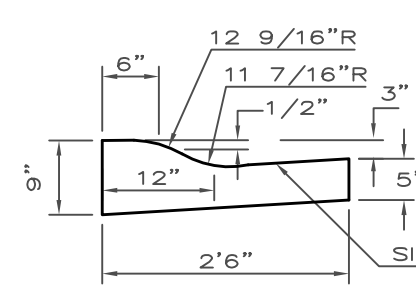
MODIFIED TYPE I
COMBINED CURB & GUTTER



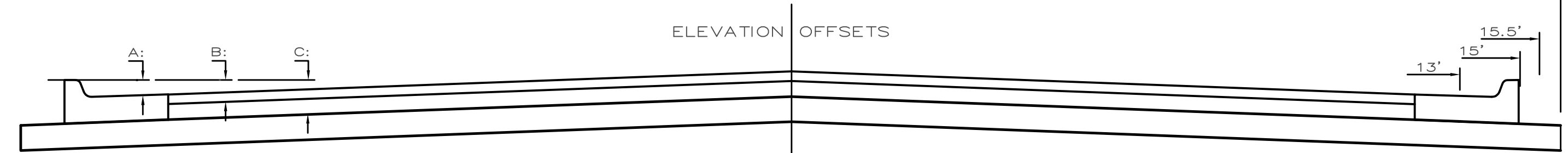
CURBED FLUME DETAIL
(No Scale)



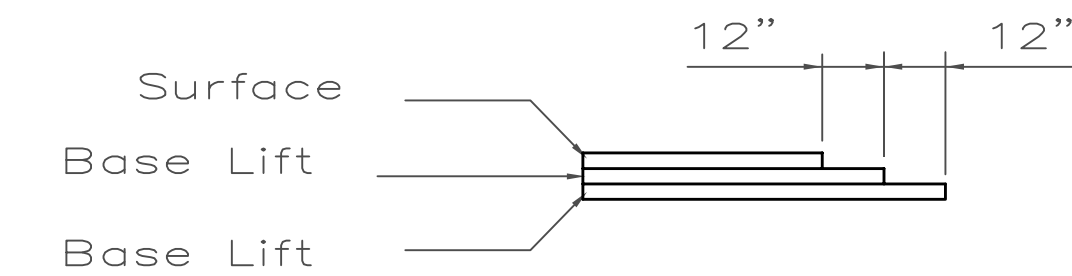
COMBINED CURB & GUTTER



COMBINED ROLL TYPE CURB &
GUTTER



	DISTANCE FROM CENTERLINE (L.T. & R.T.)										
	0'	2'	4'	6'	7.5'	10'	12'	13'	15'	15.5'	16.5'
A: Top of Curbs to Top of Surface Lift	0.10	0.14	0.21	0.27	0.32	0.39	0.46	0.49	-	-	-
B: Top of Curbs to Top of Upper Base Lift	0.27	0.31	0.37	0.44	0.48	0.56	0.62	0.65	-	-	-
C: Top of Curbs to Top of C.R. Subgrade	0.52	0.56	0.62	0.69	0.73	0.81	0.87	0.90	0.97	0.98	1.01



TRANSVERSE CONSTRUCTION JOINTS

Transverse construction joints shall be constructed in flexible base pavements at locations where pavement joints existing flexible base pavement as shown by the detail. All costs associated with the construction of the transverse joint shall be included in the bid price for Square Yards 7" ASPHALTIC CONCRETE (5" BITUMINOUS BASE).

PROPOSED STREET IMPROVEMENTS
35' TYPICAL SECTIONS
WICHITA, SEDGWICK COUNTY, KANSAS
PROJ. NO.: 20061370

CERTIFIED ENGINEERING DESIGN, P.A.
810 WEST DOUGLAS, SUITE C
WICHITA, KANSAS 67203
PH.(316)262-8808 FAX.(316)262-1669

DESIGNED: HDF	SCALE: NTS	SHEET
DRAWN: JDT	DATE: 3-06	3
CHECKED: HDF	CED FILE: Grove Rd-Base	TOTAL 17