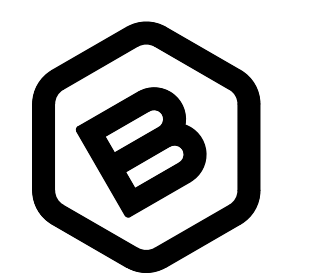
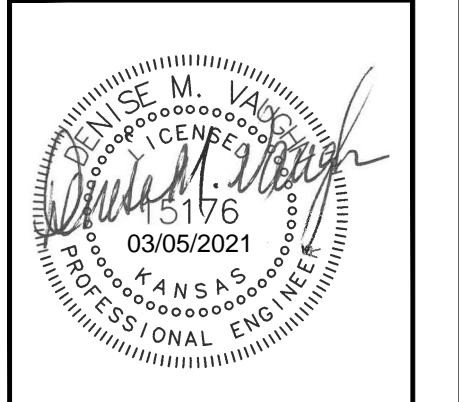
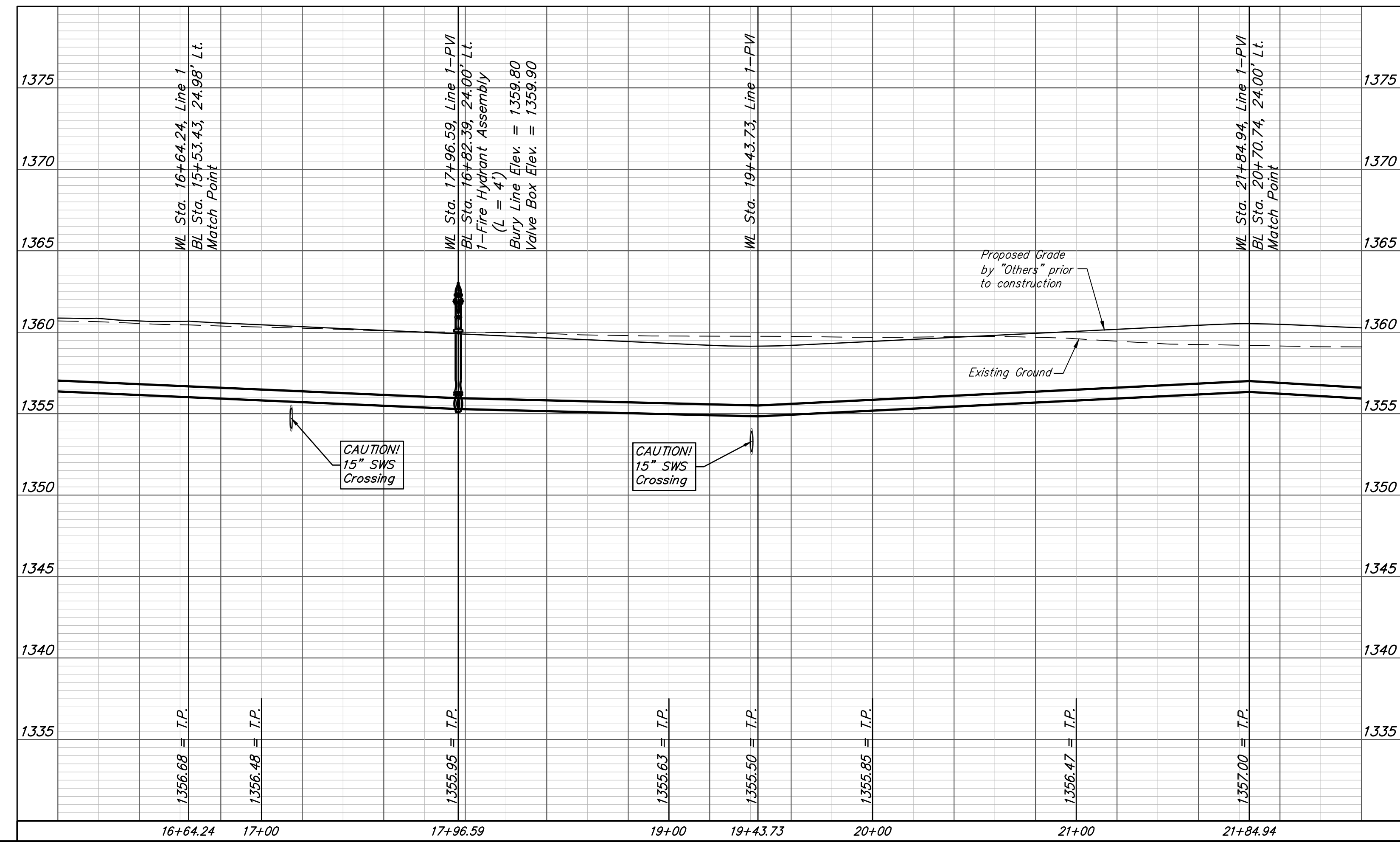
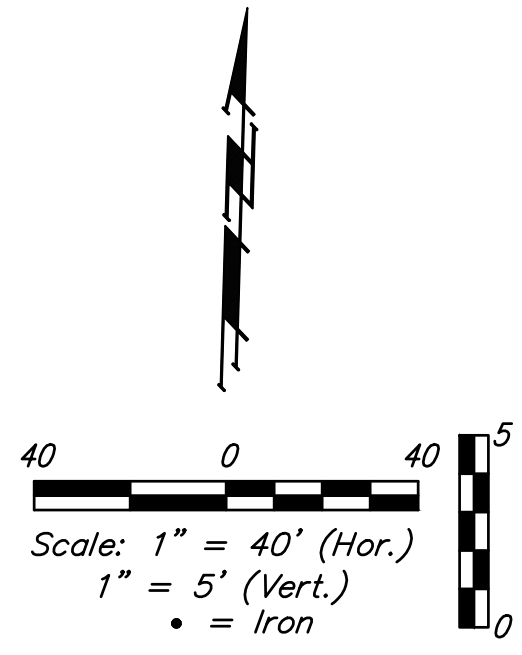
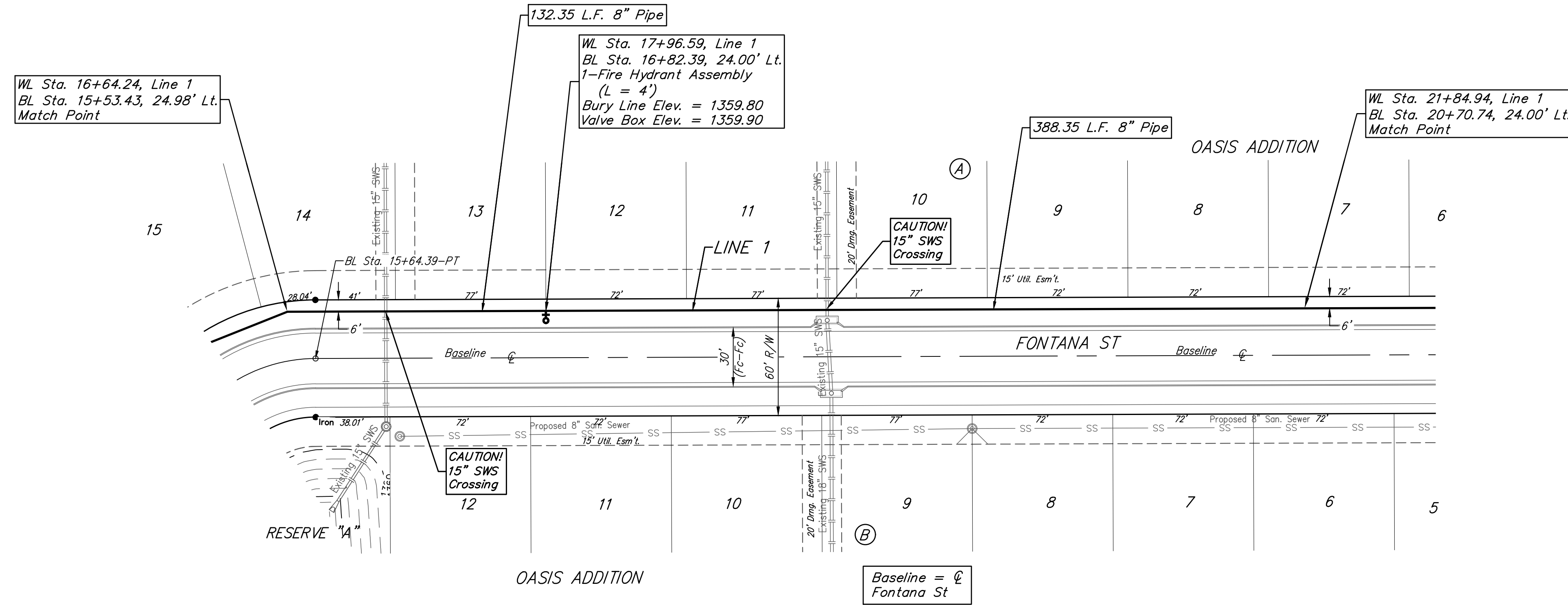


**BENCHMARK #1**  
 Railroad Spike In Northeast Face of  
 Power Pole, 31.1' Southwest of #5  
 Rebar on 50' R/W South, 22'± West of  
 Northwest Cor. of Asphalt Drive, 16.3'  
 West & 16.7' South of Southeast Cor.,  
 Reserve "B", Oasis Addition.  
 Elev. = 1359.87 NAVD88

**BENCHMARK #2**  
 Chiseled "crowfoot" on North Side of  
 Concrete Slab on North Side of Fontana  
 as Dedicated in Fontana 5th Between  
 Concrete End Sections of Two  
 Reinforced Concrete Pipes, 30.1' East to  
 Northwest Cor. of Curved Masonry Wall  
 Entry Monument on North Side of Said  
 Fontana & 27.4' South to North Line  
 of Back of Curb of Said Fontana  
 Looking East.  
 Elev. = 1359.80 NAVD88



**BAUGHMAN  
 COMPANY**  
 315 Ellis St.  
 Wichita, KS 67211  
 316-262-7271  
 BaughmanCo.com

Oasis Addition  
**LINE 1**  
 Water Distribution System  
 PROJECT NUMBER:  
 448-2020-017101  
 DESIGN: DMV DRAWN: JAK  
 DATE: Mar. 11, 2021  
 SHEET OF  
**7 16**

File: E:\Projects\Oasis Addition\_1\Engineering\Phase 1\WTR\_20-08-E654\WTR PLANS.dwg